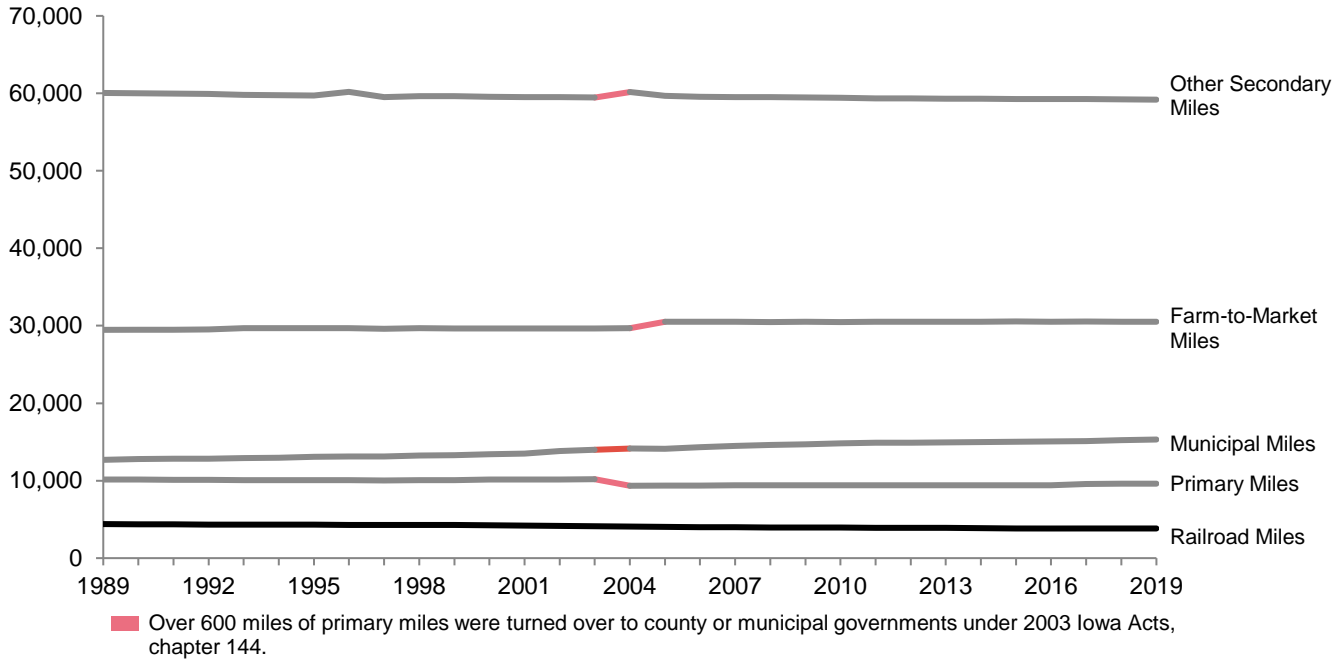


# Iowa Highway and Railroad Miles



| Calendar Year | Primary Miles | Farm-to-Mkt. Miles | Other Secondary Miles | Municipal Miles | Railroad Miles |
|---------------|---------------|--------------------|-----------------------|-----------------|----------------|
| 2012          | 9,415         | 30,501             | 59,341                | 14,904          | 3,893          |
| 2013          | 9,420         | 30,515             | 59,320                | 14,953          | 3,894          |
| 2014          | 9,410         | 30,518             | 59,306                | 14,965          | 3,854          |
| 2015          | 9,403         | 30,539             | 59,278                | 15,037          | 3,825          |
| 2016          | 9,402         | 30,530             | 59,253                | 15,067          | 3,823          |
| 2017          | 9,574         | 30,547             | 59,266                | 15,102          | 3,838          |
| 2018          | 9,595         | 30,526             | 59,219                | 15,243          | 3,838          |
| 2019          | 9,598         | 30,527             | 59,190                | 15,312          | 3,837          |

**Notes:**

- 1) Railroad miles do not include trackage rights and reflect mileage recorded as of January 1 of each year. All highway miles reflect January 1 status and do not contain proposed or legally closed road mileage. Municipal miles do not contain municipal primary miles.
- 2) Iowa ranks 14th in the nation in number of miles of roadway (2019).
- 3) There are approximately 38 miles of road for every 1,000 persons in Iowa.
- 4) Primary highways make up 8.2% of the total Iowa road system.
- 5) Approximately 91.9% of all semi-trailer truck traffic is traveled on the primary highway system.
- 6) Primary road miles increased in 2017 due to how ramps are measured at interchanges.