

Iowa Department of Education

---

IOWA EARLY INTERVENTION  
BLOCK GRANT PROGRAM  
(CLASS SIZE) 2007-2008

---

February 2008

---

State of Iowa  
**Department of Education**  
Grimes State Office Building  
Des Moines, Iowa 50319-0146

**State Board of Education**

Gene E. Vincent, President, Carroll  
Rosie Hussey, Vice President, Clear Lake  
Charles C. Edwards, Jr., Des Moines  
Sister Jude Fitzpatrick, West Des Moines  
Brian Gentry, Des Moines  
Wayne Kobberdahl, Council Bluffs  
Mary Jean Montgomery, Spencer  
Max Phillips, Woodward  
Kameron Dodge, Student Member, Cambridge

**Administration**

Judy Jeffrey, Director and Executive Officer  
of the State Board of Education  
Gail Sullivan, Chief of Staff

**Division of School Support and Information**

James Addy, Division Administrator

**Bureau of Planning, Research, Development, and Evaluation**

Jay Pennington, Bureau Chief  
Marlene Dorenkamp, Consultant  
Betsy Lundy, Consultant

It is the policy of the Iowa Department of Education not to discriminate on the basis of race, creed, color, sex, sexual orientation, gender identity, national origin, gender, disability, religion, age, political party affiliation, or actual or potential parental, family or marital status in its programs, activities, or employment practices as required by the Iowa Code sections 216.9 and 256.10(2), Titles VI and VII of the Civil Rights Act of 1964 (42 U.S.C. § 2000d and 2000e), the Equal Pay Act of 1973 (29 U.S.C. § 206, *et seq.*), Title IX (Educational Amendments, 20 U.S.C. §§ 1681 – 1688), Section 504 (Rehabilitation Act of 1973, 29 U.S.C. § 794), and the Americans with Disabilities Act (42 U.S.C. § 12101, *et seq.*).

If you have questions or grievances related to compliance with this policy by the Iowa Department of Education, please contact the legal counsel for the Iowa Department of Education, Grimes State Office Building, Des Moines, IA 50319-0146, telephone number 515/281-5295; or the Director of the Office for Civil Rights, U.S. Department of Education, Citigroup Center, 500 W. Madison Street, Suite 1475, Chicago, IL 60661, telephone number 312/730-1560, fax 312/730-1576, email: [OCR.Chicago@ed.gov](mailto:OCR.Chicago@ed.gov).

# Class Size 2007-2008

---

## Introduction

Class size reduction for the early elementary grades remained a state goal in 2007-2008, continuing efforts initiated by the Iowa Early Intervention Block Grant Program (House File 743) in 1999. Funding was allocated in 2007-2008 towards reduction of class sizes for kindergarten through third grade. Funding remained at \$29.3 million in FY 2008 unchanged from FY 2007 (see Table 1). Iowa's class size reduction goal established in Iowa Code Chapter 256D is 17 students per classroom for basic skills instruction.

Table 1

### STATE CLASS SIZE REDUCTION ALLOCATIONS FOR IOWA PUBLIC SCHOOLS

<b>Fiscal Year</b>	<b>State Allocation</b>
FY 2000	\$10 million
FY 2001	\$20 million
FY 2002	\$30 million
FY 2003	\$30 million
FY 2004	\$29.3 million*
FY 2005	\$29.3 million
FY 2006	\$29.3 million
FY 2007	\$29.3 million
FY 2008	\$29.3 million

Source: Iowa Department of Education

Note: The FY 2004 appropriation was reduced as a result of an across-the-board cut after the initial appropriation and then received a partial restoration of funds.

## Methodology

Public school districts report the number of kindergarten, first, second and third grade classroom sections, students, teachers, and aides by building during the Fall Basic Educational Data Survey (BEDS). Special education teachers and aides are not included in the reporting. Physical education, art, music and other "specialty" teachers are also excluded from the teacher count.

Some districts utilize multiage classrooms for their K-3 students. For example, a classroom may combine first and second grade students in one room. Districts report these combination classrooms as grade level "Other" on the Class Size submission but these classrooms are not included in this report.

The Department of Education calculated average class size for kindergarten through third grade at the district and state level. Average class size equals the number of students divided by the number of classrooms for each grade level.

$$\text{Average Class Size} = \text{Number of Students} / \text{Number of Classrooms}$$

Since average class size uses the number of classrooms as the denominator, adding additional teachers to a classroom does not lower the average class size for that grade level. The use of classroom aides also does not reduce average class size at the district or state level.

## Findings

This report provides class size data from 1998-1999 to 2007-2008 for kindergarten through third grade. Average class size decreased in 2007-2008 for first and second grades and increased for kindergarten compared to 2006-2007 (see Table 2 and Figure 1). The kindergarten average was at its second highest level since 1998-1999. The third grade average was at its highest level since 1999-2000, but remained steady when compared to 2006-2007. Despite the increases, average class size remained below 20 students for kindergarten and first grade in 2007-2008. Third grade continued to show the highest average class size per classroom of the grades examined, at 20.8 students per classroom for 2007-2008, and remained above 20 students in each year studied.

Overall the increase in average class size in 2007-2008 continued the trend in recent years. Average class size declined for kindergarten through second grade from 1998-1999 through 2001-2002 but increased in each of the subsequent years through 2005-2006. In 2006-2007 kindergarten average class size declined slightly. In 2007-2008 kindergarten was the only grade to increase average class size from 2006-2007. Third grade showed a decline from 1998-1999 through 2002-2003 but experienced alternating increases and decreases in the following years. Third grade remains steady in 2007-2008 when compared to 2006-2007.

Table 2

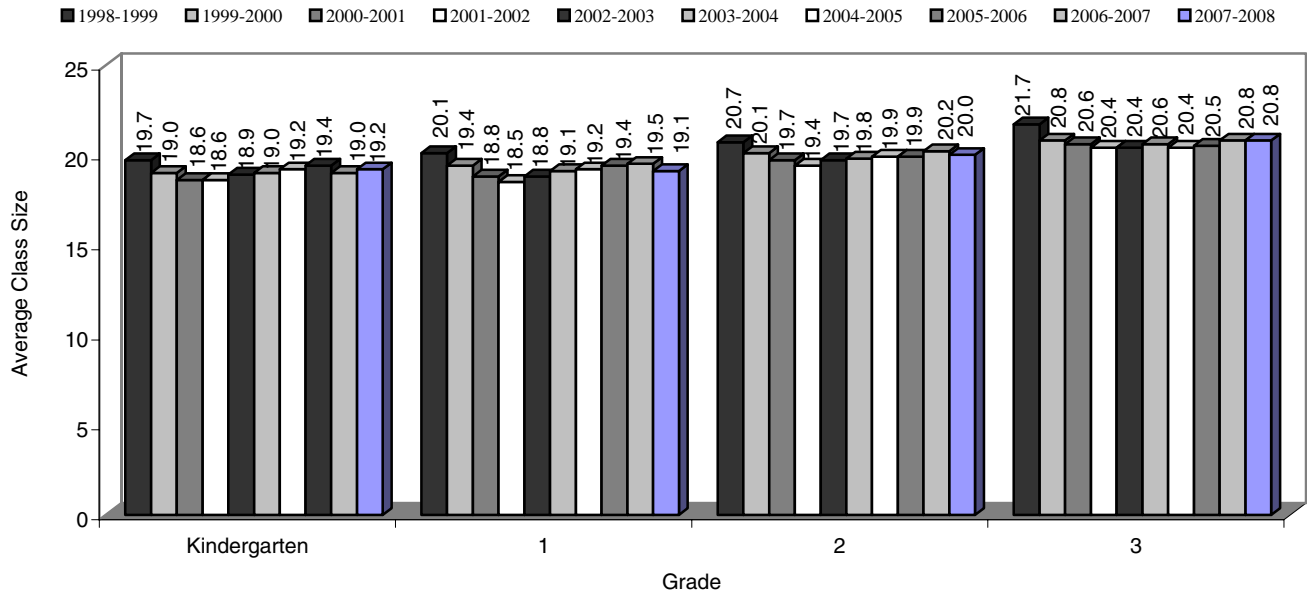
**IOWA PUBLIC SCHOOL DISTRICT  
AVERAGE CLASS SIZES FOR GRADES K – 3  
1998-1999 TO 2007-2008**

<b>Grade</b>	<b>1998-1999</b>	<b>1999-2000</b>	<b>2000-2001</b>	<b>2001-2002</b>	<b>2002-2003</b>	<b>2003-2004</b>	<b>2004-2005</b>	<b>2005-2006</b>	<b>2006-2007</b>	<b>2007-2008</b>
Kindergarten	19.7	19.0	18.6	18.6	18.9	19.0	19.2	19.4	19.0	19.2
1	20.1	19.4	18.8	18.5	18.8	19.1	19.2	19.4	19.5	19.1
2	20.7	20.1	19.7	19.4	19.7	19.8	19.9	19.9	20.2	20.0
3	21.7	20.8	20.6	20.4	20.4	20.6	20.4	20.5	20.8	20.8

Source: Iowa Department of Education, Bureau of Planning, Research, Development and Evaluation, Class Size Survey File

Figure 1

**IOWA PUBLIC SCHOOL DISTRICT  
AVERAGE CLASS SIZES FOR GRADES K-3  
1998-1999 TO 2007-2008**



Source: Iowa Department of Education, Bureau of Planning, Research, Development and Evaluation, Class Size Survey File

Table 3

**AVERAGE CLASS SIZE COMPARISON FOR IOWA PUBLIC SCHOOL DISTRICTS  
BY ENROLLMENT CATEGORY  
KINDERGARTEN**

Enrollment Category	Year									
	1998- 1999	1999- 2000	2000- 2001	2001- 2002	2002- 2003	2003- 2004	2004- 2005	2005- 2006	2006- 2007	2007- 2008
<250	12.4	12.8	10.5	10.6	11.4	10.8	11.4	11.6	11.9	11.6
250-399	17.6	16.7	16.9	16.7	16.2	16.4	16.5	15.9	16.2	16.6
400-599	17.5	16.6	16.0	16.4	16.5	16.8	17.2	17.0	16.5	16.4
600-999	18.2	18.0	17.3	17.3	17.7	17.5	17.8	17.6	17.5	17.4
1,000-2,499	19.8	19.3	18.9	18.7	18.4	19.0	18.8	19.3	18.8	19.1
2,500-7,499	21.5	20.8	20.5	20.8	20.6	20.6	20.8	21.0	20.6	20.6
7,500+	20.7	19.5	19.4	19.4	20.3	20.3	20.8	21.0	20.5	21.0
State	19.7	19.0	18.6	18.6	18.9	19.0	19.2	19.4	19.0	19.2

Source: Iowa Department of Education, Bureau of Planning, Research, Development and Evaluation, Class Size Survey File

Table 4

**AVERAGE CLASS SIZE COMPARISON FOR IOWA PUBLIC SCHOOL DISTRICTS  
BY ENROLLMENT CATEGORY  
FIRST GRADE**

Enrollment Category	Year									
	1998- 1999	1999- 2000	2000- 2001	2001- 2002	2002- 2003	2003- 2004	2004- 2005	2005- 2006	2006- 2007	2007- 2008
<250	12.4	12.8	10.5	10.6	11.4	10.8	11.4	12.7	11.8	11.9
250-399	17.6	16.7	16.9	16.7	16.2	16.4	16.5	15.8	16.0	16.4
400-599	17.5	16.6	16.0	16.4	16.5	16.8	17.2	16.9	17.0	17.0
600-999	18.2	18.0	17.3	17.3	17.7	17.5	17.8	17.8	17.5	17.8
1,000-2,499	19.8	19.3	18.9	18.7	18.4	19.0	18.8	19.2	19.4	19.0
2,500-7,499	21.5	20.8	20.5	20.8	20.6	20.6	20.8	21.1	21.0	20.3
7,500+	20.7	19.5	19.4	19.4	20.3	20.3	20.8	21.0	21.4	20.7
State	19.7	19.0	18.6	18.6	18.9	19.0	19.2	10.4	19.5	19.1

Source: Iowa Department of Education, Bureau of Planning, Research, Development and Evaluation, Class Size Survey File

Table 5

**AVERAGE CLASS SIZE COMPARISON FOR IOWA PUBLIC SCHOOL DISTRICTS  
BY ENROLLMENT CATEGORY  
SECOND GRADE**

Enrollment Category	Year									
	1998- 1999	1999- 2000	2000- 2001	2001- 2002	2002- 2003	2003- 2004	2004- 2005	2005- 2006	2006- 2007	2007- 2008
<250	12.4	12.8	10.5	10.6	11.4	10.8	11.4	12.5	13.1	11.7
250-399	17.6	16.7	16.9	16.7	16.2	16.4	16.5	16.2	17.1	16.7
400-599	17.5	16.6	16.0	16.4	16.5	16.8	17.2	17.3	17.7	17.7
600-999	18.2	18.0	17.3	17.3	17.7	17.5	17.8	18.5	18.8	18.6
1,000-2,499	19.8	19.3	18.9	18.7	18.4	19.0	18.8	20.0	20.1	20.1
2,500-7,499	21.5	20.8	20.5	20.8	20.6	20.6	20.8	21.5	21.9	20.9
7,500+	20.7	19.5	19.4	19.4	20.3	20.3	20.8	21.3	21.6	21.9
State	19.7	19.0	18.6	18.6	18.9	19.0	19.2	19.9	20.2	20.0

Source: Iowa Department of Education, Bureau of Planning, Research, Development and Evaluation, Class Size Survey File

Table 6

**AVERAGE CLASS SIZE COMPARISON FOR IOWA PUBLIC SCHOOL DISTRICTS  
BY ENROLLMENT CATEGORY  
THIRD GRADE**

Enrollment Category	Year									
	1998- 1999	1999- 2000	2000- 2001	2001- 2002	2002- 2003	2003- 2004	2004- 2005	2005- 2006	2006- 2007	2007- 2008
<250	12.4	12.8	10.5	10.6	11.4	10.8	11.4	12.6	13.7	13.5
250-399	17.6	16.7	16.9	16.7	16.2	16.4	16.5	17.2	16.4	17.8
400-599	17.5	16.6	16.0	16.4	16.5	16.8	17.2	17.6	17.9	18.0
600-999	18.2	18.0	17.3	17.3	17.7	17.5	17.8	19.0	19.6	19.3
1,000-2,499	19.8	19.3	18.9	18.7	18.4	19.0	18.8	20.6	20.9	20.7
2,500-7,499	21.5	20.8	20.5	20.8	20.6	20.6	20.8	22.1	22.4	22.2
7,500+	20.7	19.5	19.4	19.4	20.3	20.3	20.8	22.3	22.7	22.6
State	19.7	19.0	18.6	18.6	18.9	19.0	19.2	20.5	20.8	20.8

Source: Iowa Department of Education, Bureau of Planning, Research, Development and Evaluation, Class Size Survey File

Table 7

**AVERAGE CLASS SIZE COMPARISON FOR IOWA PUBLIC SCHOOL DISTRICTS  
BY ENROLLMENT CATEGORY  
KINDERGARTEN TO THIRD GRADE  
2007-2008 SCHOOL YEAR**

<b>Enrollment Category</b>	<b>Grade</b>			
	<b>K</b>	<b>1</b>	<b>2</b>	<b>3</b>
<250	11.9	11.8	13.1	13.7
250 - 399	16.2	16.0	17.1	16.4
400 - 599	16.5	17.0	17.7	17.9
600 – 999	17.5	17.5	18.8	19.6
1,000 – 2,499	18.8	19.4	20.1	20.9
2,500 – 7,499	20.6	21.0	21.9	22.4
7,500 +	20.5	21.4	21.6	22.7
State	19.0	19.5	20.2	20.8

Source: Iowa Department of Education, Bureau of Planning, Research, Development and Evaluation, Class Size Survey File

Smaller districts were more likely to meet the state goal of 17.0 students per classroom than larger districts in 2007-2008. The average class size for kindergarten and first grades was at or below 17.0 students per classroom for the <250, 250-399, and 400-599 enrollment categories in 2007-2008. The <250 and 250-399 categories were below 17 students for third grade and the <250 category was below 17 students for second grade in 2007-2008.

The larger districts were more likely to show the highest average class sizes in 2007-2008. The 2,500-7,499 and 7,500+ enrollment categories experienced average class sizes of 21 or more for first through third grade in 2007-2008. The average class size for these enrollment categories remained above 20 students per classroom for the past six years.



Table 8

**PERCENT OF IOWA PUBLIC SCHOOL DISTRICTS  
K-3 CLASSROOMS WITH GREATER THAN 17, 21, 25, AND 30 STUDENTS  
1998-1999, 2005-2006, 2006-2007 AND 2007-2008**

Grade	1998-1999	2005-2006	2006-2007	2007-2008
<b>Percent above 17</b>				
Kindergarten	71.8	72.1	68.4	71.3
1	75.5	72.6	73.4	67.9
2	83.2	77.2	78.8	79.1
3	87.4	80.9	82.0	83.1
<b>Percent above 21</b>				
Kindergarten	34.4	28.5	26.2	26.3
1	34.8	27.9	29.0	25.1
2	41.9	35.2	36.0	35.7
3	53.2	40.5	45.0	43.3
<b>Percent above 25</b>				
Kindergarten	5.2	2.3	2.6	3.7
1	5.4	3.1	3.5	1.5
2	7.9	5.0	5.7	3.9
3	14.4	8.1	10.6	8.6
<b>Percent above 30</b>				
Kindergarten	0.2	0.0	0.0	0.1
1	0.2	0.0	0.0	0.0
2	0.2	0.0	0.0	0.0
3	0.4	0.3	0.3	0.1

Source: Iowa Department of Education, Bureau of Planning, Research, Development and Evaluation, Class Size Survey File

The percentage of kindergarten, second and third grade classrooms above the state goal of 17 students per classroom increased in 2007-2008. For example, the percentage of kindergarten classrooms above 17 students went from 68.4 percent in 2006-2007 to 71.3 percent in 2007-2008. The percentage of first grade classrooms above the state goal decreased to 67.9 percent in 2007-2008 from 73.4 percent in 2006-2007.

Third grade showed a higher percentage of large classrooms compared to K-2 in 2007-2008, with 83.1 percent of third grade classrooms above 17 students per class. Although the third grade percentage was the highest, it was down compared to the 1998-1999 level of 87.4 percent. In comparison, first grade experienced 67.9 percent of classrooms above 17 students in 2007-2008. This is a 10 percent decrease from 75.5 percent of classrooms in 1998-1999 (see Table 8).

Figure 2

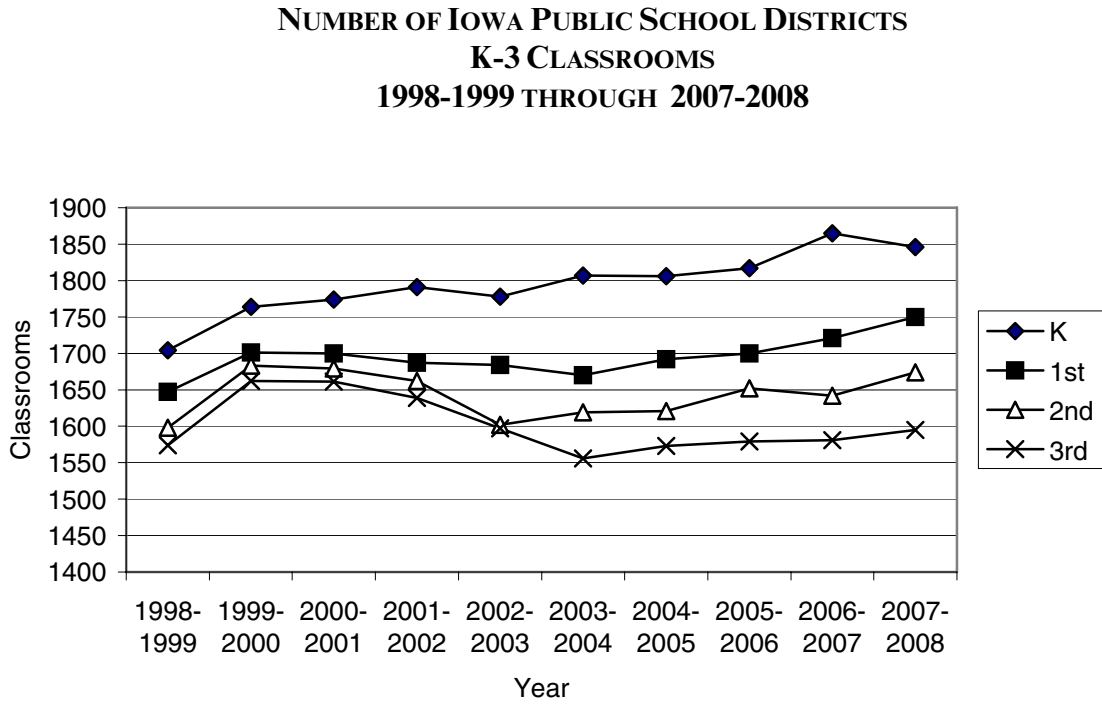


Figure 3

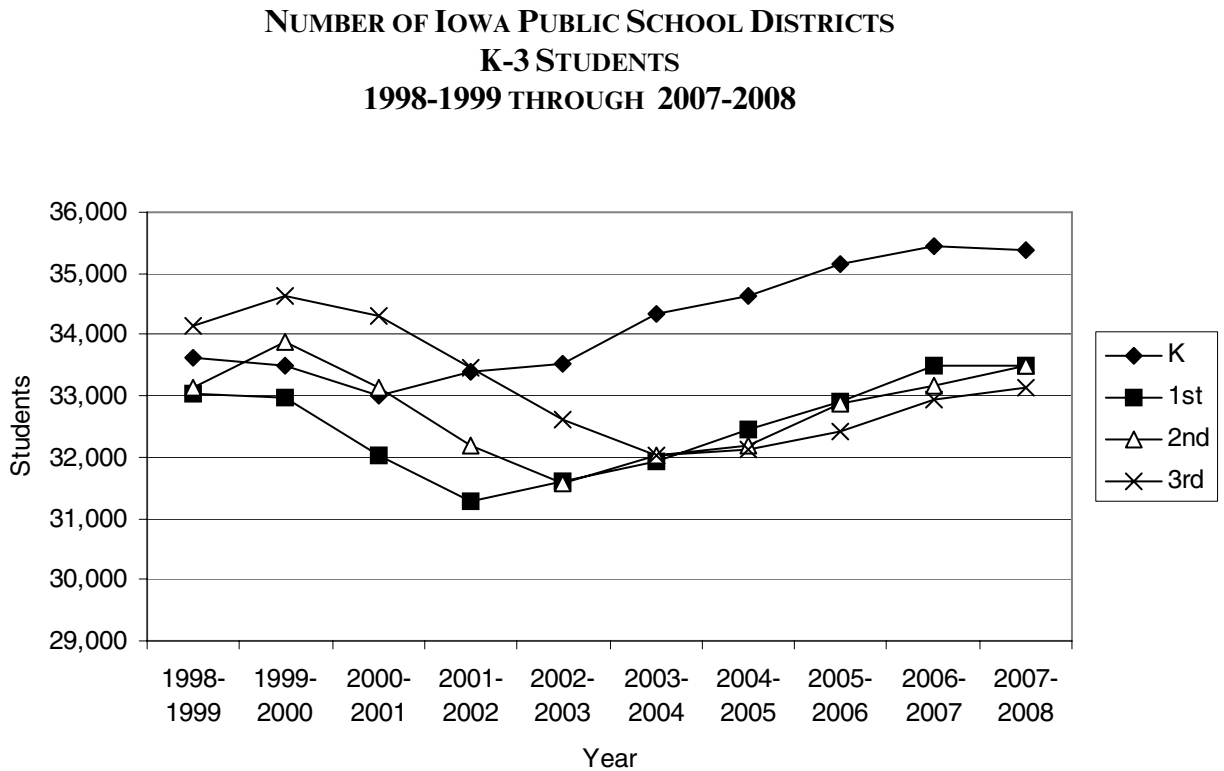
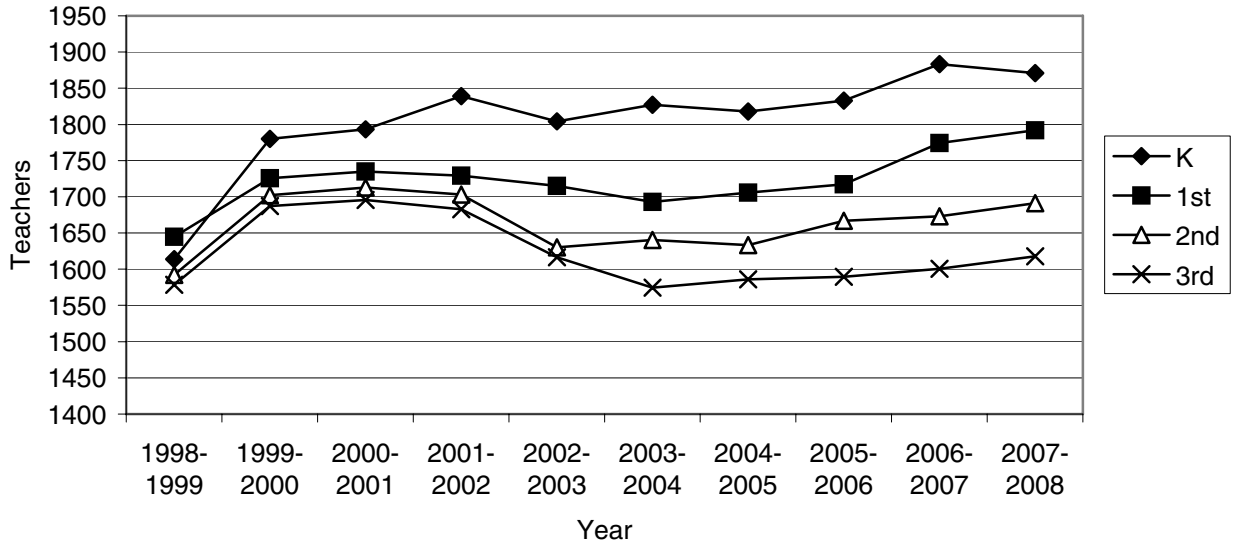


Figure 4

**NUMBER OF IOWA PUBLIC SCHOOL DISTRICTS  
K-3 TEACHERS  
1998-1999 THROUGH 2007-2008**



The growth in the number of classrooms and teachers has outpaced the growth in the number of students for each grade level from 1998-1999 to 2007-2008 (see Figures 2-4). For example, the number of first grade students increased 1.3 percent since 1998-1999 but the number of first grade classrooms increased 6.3 percent during the same period. The number of teachers increased nearly 9.0 percent.

Declines in average class size from 1998-1999 to 2007-2008 outpaced the declines in enrollment during the same period for first and second grade (see Tables 9 and 10). During this period, average class size declined 2.5 percent for kindergarten while enrollment increased 5.7 percent.

Table 9

**IOWA PUBLIC SCHOOL DISTRICT BEDS ENROLLMENT FOR  
KINDERGARTEN THROUGH THIRD GRADE  
1998-1999 AND 2007-2008**

Grade	1998-1999 Enrollment	2007-2008 Enrollment	Absolute Difference in Enrollment	Percent Change in Enrollment
Kindergarten	35,772	37,819	2,047	5.7%
1	35,699	34,874	-825	-2.3
2	35,866	34,855	-1,011	-2.8
3	36,500	34,709	-1,791	-4.9

Source: Iowa Department of Education, Bureau of Planning, Research, Development and Evaluation, Basic Educational Data Survey (BEDS) Enrollment Files

Table 10

**IOWA PUBLIC SCHOOL DISTRICTS  
DECLINE IN AVERAGE CLASS SIZE VS. BEDS ENROLLMENT  
1998-1999 TO 2007-2008**

Grade	Percent Change in Class Size	Percent Change in Enrollment
Kindergarten	-2.5%	5.7%
1	-5.0	-2.3
2	-3.4	-2.8
3	-4.2	-4.9

Source: Iowa Department of Education, Bureau of Planning, Research, Development and Evaluation, Basic Educational Data Survey (BEDS) Enrollment Files and Class Size Survey File

## Expenditures

District expenditures increased slightly in FY 2007 to \$29,579,133.64 with salaries consuming the largest percentage of the total. Purchased Services, Supplies and the Other categories were below 1.0 percent each (see Table 11 and Figure 5).

Table 11

**FY07 IOWA EARLY INTERVENTION BLOCK GRANT PROGRAM  
FY07 EXPENDITURES BY OBJECT**

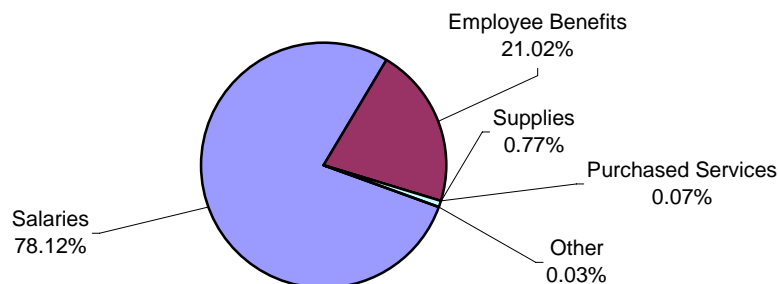
	<b>Expenditures</b>	<b>Percent</b>
Salaries	23,105,798.89	78.12
Employee Benefits	6,216,509.58	21.02
Purchased Services	20,907.60	0.07
Supplies	227,519.77	0.77
Other	8,397.80	0.03
<b>Total</b>	<b>29,579,133.64</b>	<b>100.00</b>

Source: FY 2007 Certified Annual Report

Note: Totals may not add to 100.0 percent due to rounding.

Figure 5

**FY07 IOWA EARLY INTERVENTION BLOCK GRANT PROGRAM  
FY07 EXPENDITURES BY OBJECT**



Source: FY 2007 Certified Annual Report

Note: Totals may not add to 100.0 percent due to rounding.

In FY 2007 the largest districts (+7,500) spent the smallest percentage of early intervention funds on staff salaries at 74.8 percent. Small districts in the <250, 250-399 and 400-599 enrollment categories spent the highest percentage of funds on staff salaries, at above 80 percent, yet paid fewer benefits. The very smallest districts utilized supplies the most in FY 2007 at over 6.00 percent.

Table 12

**OBJECT CATEGORY EXPENDITURES AS A PERCENT OF TOTAL  
EARLY INTERVENTION EXPENDITURES BY ENROLLMENT CATEGORY 2006-2007**

Enrollment Category	Salaries	Employee Benefits	Purchased Services	Supplies	Other	Total Expenditures
<250	80.42%	13.32%	0.11%	6.14%	0.01%	100.00%
250-399	80.07%	18.18%	0.03%	1.68%	0.03%	100.00%
400-599	82.81%	16.36%	0.10%	0.66%	0.07%	100.00%
600-999	79.74%	19.90%	0.22%	0.14%	0.00%	100.00%
1,000-2,499	79.00%	20.60%	0.09%	0.31%	0.00%	100.00%
2,500-7,499	78.63%	20.21%	0.00%	1.05%	0.12%	100.00%
7,500+	74.81%	24.21%	0.03%	0.95%	0.00%	100.00%
State	78.12%	21.02%	0.07%	0.77%	0.03%	100.00%

Source: FY 2007 Certified Annual Report

Note: Totals may not add to 100.0 percent due to rounding.

# Appendices

---

Appendix A—IOWA PUBLIC SCHOOL DISTRICT CLASS SIZE FREQUENCY  
DISTRIBUTIONS BY GRADE 2007-2008

Appendix B—IOWA PUBLIC SCHOOL DISTRICT CLASS SIZE SUMMARY  
STATISTICS FOR KINDERGARTEN THROUGH THIRD GRADE IN  
IOWA PUBLIC SCHOOLS 2007-2008

Appendix C—IOWA PUBLIC SCHOOL DISTRICT AVERAGE CLASS SIZE  
(AVGCS) FOR KINDERGARTEN THROUGH THIRD GRADE  
2006-2007 AND 2007-2008 SCHOOL YEARS

Appendix D—IOWA PUBLIC SCHOOL DISTRICTS' FY07 EARLY  
INTERVENTION BLOCK GRANT PROGRAM EXPENDITURE BY  
OBJECT

Appendix E—IOWA PUBLIC SCHOOL DISTRICTS' EARLY INTERVENTION  
BLOCK GRANT PROGRAM ALLOCATIONS 2001-2002  
THROUGH 2007-2008

Appendix F—IOWA PUBLIC SCHOOL DISTRICTS' NUMBER NOT PROFICIENT  
ON IOWA TESTS OF BASIC SKILLS 2003-2007

# Appendix A

## IOWA PUBLIC SCHOOL DISTRICT CLASS SIZE FREQUENCY DISTRIBUTIONS BY GRADE 2007-2008

<b>Kindergarten</b>				
Students	Frequency	Cumulative Percent	Cumulative Frequency	Percent
3	2	0.11	2	0.11
4	1	0.05	3	0.16
6	3	0.16	6	0.33
7	3	0.16	9	0.49
8	9	0.49	18	0.98
9	9	0.49	27	1.46
10	8	0.43	35	1.90
11	22	1.19	57	3.09
12	36	1.95	93	5.04
13	39	2.11	132	7.15
14	59	3.20	191	10.35
15	91	4.93	282	15.28
16	102	5.53	384	20.80
17	146	7.91	530	28.71
18	192	10.40	722	39.11
19	213	11.54	935	50.65
20	234	12.68	1,169	63.33
21	192	10.40	1,361	73.73
22	181	9.80	1,542	83.53
23	109	5.90	1,651	89.44
24	79	4.28	1,730	93.72
25	47	2.55	1,777	96.26
26	38	2.06	1,815	98.32
27	17	0.92	1,832	99.24
28	6	0.33	1,838	99.57
29	6	0.33	1,844	99.89
30	1	0.05	1,845	99.95
31	1	0.05	1,846	100.00

Source: Iowa Department of Education, Bureau of Planning, Research, Development and Evaluation, Basic Educational Data Survey, Class Size Survey File



**IOWA PUBLIC SCHOOL DISTRICT  
CLASS SIZE FREQUENCY DISTRIBUTIONS  
BY GRADE 2007-2008**

<b>Grade 1</b>				
Students	Frequency	Cumulative Percent	Cumulative Frequency	Percent
3	1	0.06	1	0.06
6	4	0.23	5	0.29
7	3	0.17	8	0.46
8	3	0.17	11	0.63
9	2	0.11	13	0.74
10	3	0.17	16	0.91
11	9	0.51	25	1.43
12	24	1.37	49	2.80
13	34	1.94	83	4.74
14	68	3.89	151	8.63
15	99	5.66	250	14.29
16	135	7.71	385	22.00
17	176	10.06	561	32.06
18	142	8.11	703	40.17
19	209	11.94	912	52.11
20	215	12.29	1,127	64.40
21	183	10.46	1,310	74.86
22	163	9.31	1,473	84.17
23	90	5.14	1,563	89.31
24	96	5.49	1,659	94.80
25	65	3.71	1,724	98.51
26	19	1.09	1,743	99.60
27	3	0.17	1,746	99.77
28	3	0.17	1,749	99.94
29	1	0.06	1,750	100.00

Source: Iowa Department of Education, Bureau of Planning, Research,  
Development and Evaluation, Basic Educational Data Survey, Class Size  
Survey File

**IOWA PUBLIC SCHOOL DISTRICT  
CLASS SIZE FREQUENCY DISTRIBUTIONS  
BY GRADE 2007-2008**

<b>Grade 2</b>					
Students	Frequency	Cumulative Percent	Cumulative Frequency	Percent	
5	2	0.12	2	0.12	
6	2	0.12	4	0.24	
7	2	0.12	6	0.36	
9	5	0.30	11	0.66	
10	6	0.36	17	1.02	
11	8	0.48	25	1.49	
12	10	0.60	35	2.09	
13	33	1.97	68	4.06	
14	35	2.09	103	6.15	
15	60	3.58	163	9.74	
16	71	4.24	234	13.98	
17	116	6.93	350	20.91	
18	156	9.32	506	30.23	
19	177	10.57	683	40.80	
20	233	13.92	916	54.72	
21	161	9.62	1,077	64.34	
22	192	11.47	1,269	75.81	
23	168	10.04	1,437	85.84	
24	115	6.87	1,552	92.71	
25	56	3.35	1,608	96.06	
26	41	2.45	1,649	98.51	
27	18	1.08	1,667	99.58	
28	5	0.30	1,672	99.88	
29	1	0.06	1,673	99.94	
30	1	0.06	1,674	100.00	

Source: Iowa Department of Education, Bureau of Planning, Research,  
Development and Evaluation, Basic Educational Data Survey, Class Size  
Survey File

**IOWA PUBLIC SCHOOL DISTRICT  
CLASS SIZE FREQUENCY DISTRIBUTIONS  
BY GRADE 2007-2008**

<b>Grade 3</b>				
Students	Frequency	Cumulative Percent	Cumulative Frequency	Percent
5	1	0.06	1	0.06
6	1	0.06	2	0.13
7	1	0.06	3	0.19
8	4	0.25	7	0.44
9	4	0.25	11	0.69
10	4	0.25	15	0.94
11	6	0.38	21	1.32
12	6	0.38	27	1.69
13	18	1.13	45	2.82
14	30	1.88	75	4.70
15	41	2.57	116	7.27
16	67	4.20	183	11.47
17	86	5.39	269	16.87
18	130	8.15	399	25.02
19	136	8.53	535	33.54
20	181	11.35	716	44.89
21	189	11.85	905	56.74
22	162	10.16	1,067	66.90
23	163	10.22	1,230	77.12
24	127	7.96	1,357	85.08
25	101	6.33	1,458	91.41
26	76	4.76	1,534	96.18
27	41	2.57	1,575	98.75
28	13	0.82	1,588	99.56
29	5	0.31	1,593	99.87
30	1	0.06	1,594	99.94
32	1	0.06	1,595	100.00

Source: Iowa Department of Education, Bureau of Planning, Research,  
Development and Evaluation, Basic Educational Data Survey, Class Size  
Survey File

## Appendix B

### IOWA PUBLIC SCHOOL DISTRICT CLASS SIZE SUMMARY STATISTICS FOR KINDERGARTEN THROUGH THIRD GRADE 2007-2008

<b>Grade</b>	<b>Number of Students</b>	<b>Number of Classrooms</b>	<b>FTE Teachers</b>	<b>Average Class Size</b>	<b>Minimum Class Size</b>	<b>Maximum Class Size</b>
Kindergarten	35,393	1,846	1870.8	19.2	3	31
1	33,481	1,750	1792.0	19.1	3	29
2	33,487	1,674	1691.1	20.0	5	30
3	33,120	1,595	1617.6	20.8	5	32

Source: Iowa Department of Education, Bureau of Planning, Research, Development and Evaluation, Basic Educational Data Survey, Class Size Survey File

Note: The number of students for each grade does not match the Basic Educational Data Survey enrollment figures due to the exclusion of multi-age and/or multi-level classrooms from the class size data.

# Appendix C

## IOWA PUBLIC SCHOOL DISTRICT AVERAGE CLASS SIZE (AVGCS) FOR KINDERGARTEN THROUGH THIRD GRADE 2006-2007 AND 2007-2008 SCHOOL YEARS

District Number	District Name	Grade	2006-2007 AVGCS	2007-2008 AVGCS	Percent Change
18	ADAIR-CASEY	K	13.0	18.0	38.5
		1	17.0	23.0	35.3
		2	14.0	20.0	42.9
		3	20.0	16.5	-18.0
27	ADEL-DESOTO-MINBURN	K	15.6	16.9	8.3
		1	15.8	17.0	7.6
		2	17.3	17.3	0.0
		3	20.5	21.0	2.4
9	AGWSR	K	16.3	20.0	22.7
		1	14.3	13.7	-4.2
		2	12.7	20.5	61.4
		3	17.3	20.0	15.6
441	A-H-S-T	K	18.3	16.5	-9.8
		1	15.7	16.0	1.9
		2	25.0	24.5	-2.0
		3	23.0	26.0	13.0
63	AKRON WESTFIELD	K	17.5	17.0	-2.9
		1	16.7	18.0	7.8
		2	16.5	15.7	-4.8
		3	19.0	17.0	-11.0
72	ALBERT CITY-TRUESDALE	K	16.0	13.0	-19.0
		1	12.0	14.0	16.7
		2	9.0	13.0	44.4
		3	9.0	8.0	-11.0
81	ALBIA	K	20.8	22.8	9.6
		1	20.3	20.3	0.0
		2	20.5	19.8	-3.4
		3	20.8	21.0	1.0
99	ALBURNETT	K	18.0	22.0	22.2
		1	18.0	18.0	0.0
		2	24.5	19.5	-20.0
		3	17.3	25.0	44.5
108	ALDEN	K	17.0	13.0	-24.0
		1	14.0	19.0	35.7
		2	14.0	14.0	0.0
		3	10.0	14.0	40.0

Source: Iowa Department of Education, Bureau of Planning, Research, Development and Evaluation, Basic Educational Data Survey, Class Size Survey File

**IOWA PUBLIC SCHOOL DISTRICT  
AVERAGE CLASS SIZE (AVGCS) FOR KINDERGARTEN  
THROUGH THIRD GRADE  
2006-2007 AND 2007-2008 SCHOOL YEARS**

District Number	District Name	Grade	2006-2007 AVGCS	2007-2008 AVGCS	Percent Change
126	ALGONA	K	16.8	16.2	-3.6
		1	18.0	19.5	8.3
		2	19.3	22.7	17.6
		3	19.8	25.0	26.3
135	ALLAMAKEE	K	15.0	12.9	-14.0
		1	17.6	15.8	-10.0
		2	16.8	16.8	0.0
		3	20.3	21.5	5.9
153	ALLISON-BRISTOW	K	18.0	13.0	-28.0
		1	10.0	19.0	90.0
		2	11.0	18.0	63.6
		3	18.0	20.0	11.1
171	ALTA	K	19.0	24.5	28.9
		1	17.5	17.5	0.0
		2	18.0	17.5	-2.8
		3	15.5	20.5	32.3
225	AMES	K	20.6	20.9	1.5
		1	21.3	22.0	3.3
		2	19.8	21.2	7.1
		3	21.2	21.8	2.8
234	ANAMOSA	K	21.0	20.6	-1.9
		1	17.8	22.0	23.6
		2	21.3	18.0	-16.0
		3	18.3	22.3	21.9
243	ANDREW	K	22.0	27.0	22.7
		1	21.0	23.0	9.5
		2	21.0	19.0	-9.5
		3	15.0	19.0	26.7
252	ANITA	K	11.0	18.0	63.6
		1	14.0	11.0	-21.0
		2	15.0	15.0	0.0
		3	17.0	15.0	-12.0
261	ANKENY	K	24.1	23.8	-1.2
		1	20.9	22.4	7.2
		2	22.1	22.9	3.6
		3	26.0	27.0	3.8

Source: Iowa Department of Education, Bureau of Planning, Research, Development and Evaluation, Basic Educational Data Survey, Class Size Survey File

**IOWA PUBLIC SCHOOL DISTRICT  
AVERAGE CLASS SIZE (AVGCS) FOR KINDERGARTEN  
THROUGH THIRD GRADE  
2006-2007 AND 2007-2008 SCHOOL YEARS**

District Number	District Name	Grade	2006-2007 AVGCS	2007-2008 AVGCS	Percent Change
270	ANTHON-OTO	K	11.0	13.0	18.2
		1	18.0	9.0	-50.0
		2	14.0	16.0	14.3
		3	18.0	14.0	-22.0
279	APLINGTON-PARKERSBURG	K	19.7	18.7	-5.1
		1	19.7	20.3	3.0
		2	22.0	20.3	-7.7
		3	16.0	21.3	33.1
333	ARMSTRONG-RINGSTED	K	12.5	12.5	0.0
		1	11.5	12.0	4.3
		2	14.0	11.5	-18.0
		3	21.0	13.5	-36.0
355	AR-WE-VA	K	23.0	25.0	8.7
		1	24.0	22.0	-8.3
		2	24.0	24.0	0.0
		3	20.0	20.0	0.0
387	ATLANTIC	K	18.3	16.4	-10.0
		1	19.2	20.2	5.2
		2	16.4	19.5	18.9
		3	21.0	21.3	1.4
414	AUDUBON	K	17.0	16.0	-5.9
		1	17.0	17.0	0.0
		2	24.5	18.5	-25.0
		3	22.5	24.0	6.7
423	AURELIA	K	21.0	16.0	-24.0
		1	21.0	21.0	0.0
		2	16.0	23.0	43.8
		3	20.0	14.0	-30.0
472	BALLARD	K	20.1	20.7	3.0
		1	22.0	19.7	-11.0
		2	21.2	23.6	11.3
		3	24.2	22.2	-8.3
504	BATTLE CREEK-IDA GROVE	K	15.7	12.7	-19.0
		1	18.0	16.3	-9.4
		2	17.5	17.0	-2.9
		3	13.0	18.5	42.3

Source: Iowa Department of Education, Bureau of Planning, Research, Development and Evaluation, Basic Educational Data Survey, Class Size Survey File

**IOWA PUBLIC SCHOOL DISTRICT  
AVERAGE CLASS SIZE (AVGCS) FOR KINDERGARTEN  
THROUGH THIRD GRADE  
2006-2007 AND 2007-2008 SCHOOL YEARS**

District Number	District Name	Grade	2006-2007 AVGCS	2007-2008 AVGCS	Percent Change
513	BAXTER	K	16.0	17.5	9.4
		1	15.5	13.5	-13.0
		2	17.0	15.0	-12.0
		3	25.0	16.0	-36.0
540	BCLUW	K	18.0	15.0	-17.0
		1	15.3	20.0	30.7
		2	15.7	14.0	-11.0
		3	20.0	23.5	17.5
549	BEDFORD	K	15.5	18.5	19.4
		1	19.0	15.0	-21.0
		2	20.0	19.0	-5.0
		3	17.5	19.5	11.4
576	BELLE PLAINE	K	14.0	17.7	26.4
		1	18.5	16.5	-11.0
		2	18.0	17.5	-2.8
		3	12.5	17.5	40.0
585	BELLEVUE	K	12.8	15.8	23.4
		1	17.0	19.5	14.7
		2	23.0	17.0	-26.0
		3	24.5	22.0	-10.0
594	BELMOND-KLEMME	K	17.3	21.5	24.3
		1	17.3	17.0	-1.7
		2	14.7	16.8	14.3
		3	17.3	23.5	35.8
603	BENNETT	K	12.0	12.0	0.0
		1	15.0	15.0	0.0
		2	16.0	15.0	-6.3
		3	11.0	16.0	45.5
609	BENTON	K	17.0	16.3	-4.1
		1	18.0	18.7	3.9
		2	17.0	18.3	7.6
		3	16.0	17.5	9.4
621	BETTENDORF	K	21.9	23.1	5.5
		1	23.2	23.5	1.3
		2	24.9	23.8	-4.4
		3	22.8	26.3	15.4

Source: Iowa Department of Education, Bureau of Planning, Research, Development and Evaluation, Basic Educational Data Survey, Class Size Survey File



**IOWA PUBLIC SCHOOL DISTRICT  
AVERAGE CLASS SIZE (AVGCS) FOR KINDERGARTEN  
THROUGH THIRD GRADE  
2006-2007 AND 2007-2008 SCHOOL YEARS**

District Number	District Name	Grade	2006-2007 AVGCS	2007-2008 AVGCS	Percent Change
720	BONDURANT-FARRAR	K	20.5	17.7	-14.0
		1	17.8	17.6	-1.1
		2	21.5	21.8	1.4
		3	21.3	23.0	8.0
729	BOONE	K	19.2	19.9	3.6
		1	20.1	20.0	-0.5
		2	20.1	19.4	-3.5
		3	21.7	23.9	10.1
747	BOYDEN-HULL	K	21.7	18.3	-16.0
		1	17.0	14.0	-18.0
		2	22.5	24.0	6.7
		3	18.7	23.5	25.7
1917	BOYER VALLEY	K	19.0	19.0	0.0
		1	16.5	19.5	18.2
		2	15.0	16.0	6.7
		3	17.0	16.0	-5.9
846	BROOKLYN-GUERNSEY-MALCOM	K	16.5	21.5	30.3
		1	16.5	16.5	0.0
		2	16.7	16.5	-1.2
		3	23.0	18.3	-20.0
882	BURLINGTON	K	20.3	19.2	-5.4
		1	17.9	19.9	11.2
		2	19.0	19.3	1.6
		3	21.1	19.2	-9.0
914	C AND M	K	15.0	11.0	-27.0
		1	10.0	13.0	30.0
		2	13.0	12.0	-7.7
		3	14.0	13.0	-7.1
916	CAL	K	20.0	28.0	40.0
		1	19.0	20.0	5.3
		2	10.0	20.0	100.0
		3	20.0	12.0	-40.0
918	CALAMUS-WHEATLAND	K	15.3	17.0	11.1
		1	20.0	18.0	-10.0
		2	20.5	19.0	-7.3
		3	19.5	20.0	2.6

Source: Iowa Department of Education, Bureau of Planning, Research, Development and Evaluation, Basic Educational Data Survey, Class Size Survey File

**IOWA PUBLIC SCHOOL DISTRICT  
AVERAGE CLASS SIZE (AVGCS) FOR KINDERGARTEN  
THROUGH THIRD GRADE  
2006-2007 AND 2007-2008 SCHOOL YEARS**

District Number	District Name	Grade	2006-2007 AVGCS	2007-2008 AVGCS	Percent Change
936	CAMANCHE	K	23.0	19.3	-16.0
		1	17.8	21.8	22.5
		2	20.3	24.7	21.7
		3	26.0	20.3	-22.0
977	CARDINAL	K	17.0	21.0	23.5
		1	22.0	14.5	-34.0
		2	20.5	21.5	4.9
		3	24.0	21.0	-13.0
981	CARLISLE	K	18.1	19.3	6.6
		1	20.2	21.5	6.4
		2	20.9	20.7	-1.0
		3	22.0	24.0	9.1
999	CARROLL	K	23.1	18.3	-21.0
		1	18.4	21.4	16.3
		2	20.5	20.4	-0.5
		3	22.8	21.8	-4.4
1044	CEDAR FALLS	K	19.3	18.7	-3.1
		1	20.1	21.1	5.0
		2	21.4	22.6	5.6
		3	18.7	23.0	23.0
1053	CEDAR RAPIDS	K	21.6	22.0	1.9
		1	22.6	21.7	-4.0
		2	22.5	22.9	1.8
		3	21.9	22.9	4.6
1062	CENTER POINT-URBANA	K	18.6	19.3	3.8
		1	20.0	22.6	13.0
		2	19.0	19.4	2.1
		3	20.8	20.0	-3.8
1071	CENTERVILLE	K	17.8	14.7	-17.0
		1	18.0	17.2	-4.4
		2	16.2	18.2	12.3
		3	20.0	18.4	-8.0
1080	CENTRAL	K	17.5	18.5	5.7
		1	15.5	19.0	22.6
		2	20.0	15.5	-23.0
		3	14.5	19.5	34.5

Source: Iowa Department of Education, Bureau of Planning, Research, Development and Evaluation, Basic Educational Data Survey, Class Size Survey File

**IOWA PUBLIC SCHOOL DISTRICT  
AVERAGE CLASS SIZE (AVGCS) FOR KINDERGARTEN  
THROUGH THIRD GRADE  
2006-2007 AND 2007-2008 SCHOOL YEARS**

District Number	District Name	Grade	2006-2007 AVGCS	2007-2008 AVGCS	Percent Change
1089	CENTRAL CITY	K	15.0	12.7	-15.0
		1	18.5	15.0	-19.0
		2	14.0	18.5	32.1
		3	16.0	12.5	-22.0
1082	CENTRAL CLINTON	K	20.8	20.4	-1.9
		1	21.0	19.8	-5.7
		2	26.0	21.8	-16.0
		3	22.0	21.2	-3.6
1093	CENTRAL DECATUR	K	16.0	16.3	1.9
		1	17.7	15.3	-14.0
		2	21.5	15.7	-27.0
		3	18.0	22.5	25.0
1079	CENTRAL LEE	K	17.8	16.5	-7.3
		1	15.0	16.8	12.0
		2	18.3	16.5	-9.8
		3	24.7	19.5	-21.0
1095	CENTRAL LYON	K	15.7	17.7	12.7
		1	15.0	16.3	8.7
		2	22.5	21.0	-6.7
		3	19.0	22.0	15.8
1107	CHARITON	K	20.0	20.6	3.0
		1	21.0	20.6	-1.9
		2	21.2	22.2	4.7
		3	20.2	20.6	2.0
1116	CHARLES CITY	K	20.4	21.0	2.9
		1	19.8	19.4	-2.0
		2	19.0	19.8	4.2
		3	18.6	19.6	5.4
1134	CHARTER OAK-UTE	K	18.0	17.0	-5.6
		1	14.0	19.0	35.7
		2	22.0	14.5	-34.0
		3	21.0	22.0	4.8
1152	CHEROKEE	K	20.0	16.0	-20.0
		1	15.3	21.5	40.5
		2	18.5	14.8	-20.0
		3	17.0	17.8	4.7

Source: Iowa Department of Education, Bureau of Planning, Research, Development and Evaluation, Basic Educational Data Survey, Class Size Survey File

**IOWA PUBLIC SCHOOL DISTRICT  
AVERAGE CLASS SIZE (AVGCS) FOR KINDERGARTEN  
THROUGH THIRD GRADE  
2006-2007 AND 2007-2008 SCHOOL YEARS**

District Number	District Name	Grade	2006-2007 AVGCS	2007-2008 AVGCS	Percent Change
1197	CLARINDA	K	16.3	19.7	20.9
		1	20.0	18.0	-10.0
		2	18.3	20.0	9.3
		3	21.0	17.3	-18.0
1206	CLARION-GOLDFIELD	K	21.3	22.7	6.6
		1	23.0	22.3	-3.0
		2	14.7	23.3	58.5
		3	18.8	16.0	-15.0
1211	CLARKE	K	19.6	18.4	-6.1
		1	20.8	19.4	-6.7
		2	20.0	22.0	10.0
		3	21.3	19.4	-8.9
1215	CLARKSVILLE	K	13.0	14.0	7.7
		1	11.0	12.0	9.1
		2	25.0	11.5	-54.0
		3	22.0	25.0	13.6
1218	CLAY CENTRAL-EVERLY	K	9.0	12.5	38.9
		1	14.5	20.0	37.9
		2	20.0	13.0	-35.0
		3	11.0	19.0	72.7
2763	CLAYTON RIDGE	K	17.5	19.0	8.6
		1	14.7	18.5	25.9
		2	18.5	23.0	24.3
		3	23.0	18.0	-22.0
1221	CLEAR CREEK AMANA	K	19.8	14.4	-27.0
		1	17.3	19.8	14.5
		2	19.0	19.3	1.6
		3	22.0	20.3	-7.7
1233	CLEAR LAKE	K	22.4	18.8	-16.0
		1	16.6	18.2	9.6
		2	21.0	20.8	-1.0
		3	21.6	21.2	-1.9
1224	CLEARFIELD	K	9.0	8.0	-11.0
		1	5.0	7.0	40.0
		2	6.0	NA	NA
		3	NA	NA	NA

Source: Iowa Department of Education, Bureau of Planning, Research, Development and Evaluation, Basic Educational Data Survey, Class Size Survey File

**IOWA PUBLIC SCHOOL DISTRICT  
AVERAGE CLASS SIZE (AVGCS) FOR KINDERGARTEN  
THROUGH THIRD GRADE  
2006-2007 AND 2007-2008 SCHOOL YEARS**

District Number	District Name	Grade	2006-2007 AVGCS	2007-2008 AVGCS	Percent Change
1278	CLINTON	K	20.6	21.4	3.9
		1	21.4	20.2	-5.6
		2	21.9	21.9	0.0
		3	21.8	21.6	-0.9
1332	COLFAX-MINGO	K	17.7	19.3	9.0
		1	21.0	17.7	-16.0
		2	14.0	24.0	71.4
		3	21.0	21.0	0.0
1337	COLLEGE	K	21.8	17.2	-21.0
		1	20.9	19.8	-5.3
		2	18.9	21.9	15.9
		3	21.9	22.0	0.5
1350	COLLINS-MAXWELL	K	23.0	19.5	-15.0
		1	16.5	21.0	27.3
		2	17.5	16.0	-8.6
		3	19.0	16.0	-16.0
1359	COLO-NESCO	K	20.5	14.0	-32.0
		1	17.0	17.5	2.9
		2	20.0	16.5	-18.0
		3	19.0	17.0	-11.0
1368	COLUMBUS	K	18.8	16.0	-15.0
		1	17.3	16.3	-5.8
		2	16.8	19.0	13.1
		3	17.8	17.0	-4.5
1413	COON RAPIDS-BAYARD	K	15.5	14.0	-9.7
		1	20.0	15.0	-25.0
		2	13.0	19.5	50.0
		3	18.5	14.0	-24.0
1431	CORNING	K	18.0	14.5	-19.0
		1	14.0	19.0	35.7
		2	13.5	16.5	22.2
		3	15.0	13.5	-10.0
1449	CORWITH-WESLEY	K	13.0	15.0	15.4
		1	5.0	15.0	200.0
		2	8.0	9.0	12.5
		3	9.0	13.0	44.4

Source: Iowa Department of Education, Bureau of Planning, Research, Development and Evaluation, Basic Educational Data Survey, Class Size Survey File

**IOWA PUBLIC SCHOOL DISTRICT  
AVERAGE CLASS SIZE (AVGCS) FOR KINDERGARTEN  
THROUGH THIRD GRADE  
2006-2007 AND 2007-2008 SCHOOL YEARS**

District Number	District Name	Grade	2006-2007 AVGCS	2007-2008 AVGCS	Percent Change
1476	COUNCIL BLUFFS	K	20.7	20.1	-2.9
		1	21.6	20.9	-3.2
		2	22.7	22.3	-1.8
		3	22.8	23.0	0.9
1503	CRESTON	K	22.2	18.2	-18.0
		1	19.2	20.0	4.2
		2	20.2	17.4	-14.0
		3	21.6	19.8	-8.3
1576	DALLAS CENTER-GRIMES	K	19.4	18.9	-2.6
		1	19.5	19.0	-2.6
		2	18.1	19.6	8.3
		3	21.2	20.0	-5.7
1602	DANVILLE	K	14.5	16.3	12.4
		1	20.5	14.0	-32.0
		2	26.5	20.0	-25.0
		3	25.0	26.0	4.0
1611	DAVENPORT	K	20.9	19.9	-4.8
		1	19.8	20.3	2.5
		2	20.0	19.8	-1.0
		3	20.7	21.5	3.9
1619	DAVIS COUNTY	K	17.5	18.2	4.0
		1	19.8	17.8	-10.0
		2	19.2	20.3	5.7
		3	23.0	24.0	4.3
1638	DECORAH	K	21.6	17.6	-19.0
		1	20.8	20.6	-1.0
		2	23.4	19.8	-15.0
		3	25.5	21.0	-18.0
1647	DEEP RIVER-MILLERSBURG	K	11.0	8.0	-27.0
		1	11.0	10.0	-9.1
		2	12.0	10.0	-17.0
		3	12.0	11.0	-8.3
1675	DELWOOD	K	10.0	15.0	50.0
		1	20.0	16.0	-20.0
		2	11.0	22.0	100.0
		3	14.0	11.0	-21.0

Source: Iowa Department of Education, Bureau of Planning, Research, Development and Evaluation, Basic Educational Data Survey, Class Size Survey File

**IOWA PUBLIC SCHOOL DISTRICT  
AVERAGE CLASS SIZE (AVGCS) FOR KINDERGARTEN  
THROUGH THIRD GRADE  
2006-2007 AND 2007-2008 SCHOOL YEARS**

District Number	District Name	Grade	2006-2007 AVGCS	2007-2008 AVGCS	Percent Change
1701	DENISON	K	21.5	21.3	-0.9
		1	20.0	19.3	-3.5
		2	21.7	19.0	-12.0
		3	19.5	20.3	4.1
1719	DENVER	K	15.7	17.3	10.2
		1	17.0	21.0	23.5
		2	18.0	17.3	-3.9
		3	14.7	18.7	27.2
1737	DES MOINES INDEPENDENT	K	22.1	21.9	-0.9
		1	22.6	23.0	1.8
		2	22.6	23.0	1.8
		3	23.3	25.3	8.6
1782	DIAGONAL	K	10.0	5.0	-50.0
		1	9.0	11.0	22.2
		2	NA	NA	NA
		3	NA	NA	NA
1791	DIKE-NEW HARTFORD	K	15.0	18.0	20.0
		1	20.0	17.3	-14.0
		2	17.7	20.0	13.0
		3	25.0	18.3	-27.0
1854	DOWS	K	10.0	8.0	-20.0
		1	12.0	11.0	-8.3
		2	9.0	10.0	11.1
		3	10.0	8.0	-20.0
1863	DUBUQUE	K	20.8	20.9	0.5
		1	19.9	21.6	8.5
		2	20.2	21.2	5.0
		3	21.7	20.4	-6.0
1908	DUNKERTON	K	15.5	17.0	9.7
		1	20.0	16.0	-20.0
		2	18.5	16.5	-11.0
		3	15.0	20.0	33.3

Source: Iowa Department of Education, Bureau of Planning, Research, Development and Evaluation, Basic Educational Data Survey, Class Size Survey File

**IOWA PUBLIC SCHOOL DISTRICT  
AVERAGE CLASS SIZE (AVGCS) FOR KINDERGARTEN  
THROUGH THIRD GRADE  
2006-2007 AND 2007-2008 SCHOOL YEARS**

District Number	District Name	Grade	2006-2007 AVGCS	2007-2008 AVGCS	Percent Change
1926	DURANT	K	12.5	13.5	8.0
		1	16.5	13.5	-18.0
		2	15.0	17.5	16.7
		3	18.5	18.5	0.0
1944	EAGLE GROVE	K	18.3	17.8	-2.7
		1	19.0	17.0	-11.0
		2	21.3	20.3	-4.7
		3	19.7	19.0	-3.6
1953	EARLHAM	K	16.0	15.7	-1.9
		1	17.0	16.7	-1.8
		2	20.0	18.3	-8.5
		3	16.7	20.5	22.8
1963	EAST BUCHANAN	K	24.0	22.0	-8.3
		1	16.5	25.0	51.5
		2	20.0	17.5	-13.0
		3	17.5	21.5	22.9
1965	EAST CENTRAL	K	12.5	15.0	20.0
		1	13.0	12.0	-7.7
		2	15.5	12.5	-19.0
		3	14.0	14.5	3.6
1967	EAST GREENE	K	24.0	14.0	-42.0
		1	15.5	21.0	35.5
		2	14.0	17.0	21.4
		3	20.0	12.5	-38.0
1968	EAST MARSHALL	K	15.8	13.5	-15.0
		1	18.0	14.8	-18.0
		2	17.7	19.7	11.3
		3	18.0	18.0	0.0

Source: Iowa Department of Education, Bureau of Planning, Research, Development and Evaluation, Basic Educational Data Survey, Class Size Survey File



**IOWA PUBLIC SCHOOL DISTRICT  
AVERAGE CLASS SIZE (AVGCS) FOR KINDERGARTEN  
THROUGH THIRD GRADE  
2006-2007 AND 2007-2008 SCHOOL YEARS**

District Number	District Name	Grade	2006-2007 AVGCS	2007-2008 AVGCS	Percent Change
1970	EAST UNION	K	18.5	17.0	-8.1
		1	19.5	18.5	-5.1
		2	19.5	19.5	0.0
		3	20.0	18.0	-10.0
1972	EASTERN ALLAMAKEE	K	13.5	13.0	-3.7
		1	19.0	13.5	-29.0
		2	21.0	20.0	-4.8
		3	13.0	19.5	50.0
657	EDDYVILLE-BLAKESBURG	K	18.7	16.5	-12.0
		1	15.0	16.7	11.3
		2	17.0	14.7	-14.0
		3	15.7	15.0	-4.5
1989	EDGEWOOD-COLESBURG	K	17.7	16.0	-9.6
		1	12.7	14.7	15.7
		2	22.0	21.0	-4.5
		3	20.0	21.0	5.0
2007	ELDORA-NEW PROVIDENCE	K	14.7	17.0	15.6
		1	NA	21.5	NA
		2	NA	17.0	NA
		3	NA	19.5	NA
2016	ELK HORN-KIMBALLTON	K	15.0	22.0	46.7
		1	24.0	15.0	-38.0
		2	11.0	24.0	118.0
		3	20.0	15.0	-25.0
2088	EMMETSBURG	K	17.3	13.3	-23.0
		1	17.3	16.0	-7.5
		2	19.5	16.3	-16.0
		3	15.3	23.5	53.6

Source: Iowa Department of Education, Bureau of Planning, Research, Development and Evaluation, Basic Educational Data Survey, Class Size Survey File

**IOWA PUBLIC SCHOOL DISTRICT  
AVERAGE CLASS SIZE (AVGCS) FOR KINDERGARTEN  
THROUGH THIRD GRADE  
2006-2007 AND 2007-2008 SCHOOL YEARS**

District Number	District Name	Grade	2006-2007 AVGCS	2007-2008 AVGCS	Percent Change
2097	ENGLISH VALLEYS	K	14.5	18.0	24.1
		1	16.0	14.0	-13.0
		2	16.5	16.5	0.0
		3	20.0	15.5	-23.0
2113	ESSEX	K	22.0	27.0	22.7
		1	24.0	23.0	-4.2
		2	19.0	26.0	36.8
		3	23.0	20.0	-13.0
2124	ESTHERVILLE LINCOLN	K	19.7	17.4	-12.0
		1	15.2	18.0	18.4
		2	21.0	17.4	-17.0
		3	20.0	22.0	10.0
2151	EXIRA	K	17.0	13.0	-24.0
		1	20.0	18.0	-10.0
		2	17.0	20.0	17.6
		3	17.0	18.0	5.9
2169	FAIRFIELD	K	20.0	21.0	5.0
		1	20.6	20.5	-0.5
		2	23.0	20.0	-13.0
		3	20.7	22.3	7.7
2205	FARRAGUT	K	21.0	19.0	-9.5
		1	17.0	15.0	-12.0
		2	12.0	13.0	8.3
		3	12.0	12.0	0.0
2295	FOREST CITY	K	20.3	17.3	-15.0
		1	19.3	19.0	-1.6
		2	21.7	19.7	-9.2
		3	18.0	20.0	11.1
2313	FORT DODGE	K	21.2	20.1	-5.2
		1	19.6	20.6	5.1
		2	22.4	22.1	-1.3
		3	24.0	22.8	-5.0

Source: Iowa Department of Education, Bureau of Planning, Research, Development and Evaluation, Basic Educational Data Survey, Class Size Survey File

**IOWA PUBLIC SCHOOL DISTRICT  
AVERAGE CLASS SIZE (AVGCS) FOR KINDERGARTEN  
THROUGH THIRD GRADE  
2006-2007 AND 2007-2008 SCHOOL YEARS**

District Number	District Name	Grade	2006-2007 AVGCS	2007-2008 AVGCS	Percent Change
2322	FORT MADISON	K	18.9	20.7	9.5
		1	19.7	20.0	1.5
		2	21.5	19.3	-10.0
		3	19.3	22.4	16.1
2349	FREDERICKSBURG	K	20.0	23.0	15.0
		1	24.0	20.0	-17.0
		2	22.0	25.0	13.6
		3	22.0	22.0	0.0
2367	FREMONT	K	12.0	19.0	58.3
		1	16.0	17.0	6.3
		2	12.0	16.0	33.3
		3	12.0	14.0	16.7
2369	FREMONT-MILLS	K	16.0	16.0	0.0
		1	13.0	15.5	19.2
		2	12.0	13.5	12.5
		3	17.5	25.0	42.9
2376	GALVA-HOLSTEIN	K	16.0	16.0	0.0
		1	14.5	15.5	6.9
		2	19.5	14.5	-26.0
		3	20.5	18.5	-9.8
2403	GARNER-HAYFIELD	K	15.3	20.3	32.7
		1	19.0	17.0	-11.0
		2	17.8	20.0	12.4
		3	16.0	23.3	45.6
2457	GEORGE-LITTLE ROCK	K	12.7	15.3	20.5
		1	17.5	14.0	-20.0
		2	19.5	19.0	-2.6
		3	15.5	19.5	25.8
2466	GILBERT	K	19.3	17.5	-9.3
		1	18.3	18.8	2.7
		2	20.5	20.0	-2.4
		3	21.0	20.3	-3.3
2493	GILMORE CITY-BRADGATE	K	7.0	8.0	14.3
		1	8.0	6.0	-25.0
		2	9.0	9.0	0.0
		3	7.0	9.0	28.6

Source: Iowa Department of Education, Bureau of Planning, Research, Development and Evaluation, Basic Educational Data Survey, Class Size Survey File

**IOWA PUBLIC SCHOOL DISTRICT  
AVERAGE CLASS SIZE (AVGCS) FOR KINDERGARTEN  
THROUGH THIRD GRADE  
2006-2007 AND 2007-2008 SCHOOL YEARS**

District Number	District Name	Grade	2006-2007 AVGCS	2007-2008 AVGCS	Percent Change
2502	GLADBROOK-REINBECK	K	17.7	16.0	-9.6
		1	17.5	16.0	-8.6
		2	16.7	15.0	-10.0
		3	14.5	15.0	3.4
2511	GLENWOOD	K	19.9	22.6	13.6
		1	22.3	19.0	-15.0
		2	21.0	23.3	11.0
		3	21.3	22.6	6.1
2520	GLIDDEN-RALSTON	K	14.0	13.5	-3.6
		1	27.0	18.0	-33.0
		2	24.0	14.0	-42.0
		3	23.0	13.5	-41.0
2682	GMG	K	18.0	21.0	16.7
		1	15.0	14.0	-6.7
		2	14.0	15.5	10.7
		3	15.5	13.5	-13.0
2556	GRAETTINGER	K	15.0	23.0	53.3
		1	17.0	14.0	-18.0
		2	16.0	15.0	-6.3
		3	11.0	21.0	90.9
2664	GREENE	K	19.0	17.0	-11.0
		1	20.0	19.0	-5.0
		2	18.0	20.0	11.1
		3	22.0	20.0	-9.1
2709	GRINNELL-NEWBURG	K	22.2	21.7	-2.3
		1	18.2	16.1	-12.0
		2	22.3	21.8	-2.2
		3	23.8	22.0	-7.6
2718	GRISWOLD	K	21.5	24.5	14.0
		1	22.0	19.0	-14.0
		2	20.5	22.5	9.8
		3	22.0	21.5	-2.3
2727	GRUNDY CENTER	K	20.0	24.5	22.5
		1	22.0	21.0	-4.5
		2	22.0	20.5	-6.8
		3	18.5	23.5	27.0

Source: Iowa Department of Education, Bureau of Planning, Research, Development and Evaluation, Basic Educational Data Survey, Class Size Survey File

**IOWA PUBLIC SCHOOL DISTRICT  
AVERAGE CLASS SIZE (AVGCS) FOR KINDERGARTEN  
THROUGH THIRD GRADE  
2006-2007 AND 2007-2008 SCHOOL YEARS**

District Number	District Name	Grade	2006-2007 AVGCS	2007-2008 AVGCS	Percent Change
2754	GUTHRIE CENTER	K	23.5	13.7	-42.0
		1	18.5	21.5	16.2
		2	14.0	18.0	28.6
		3	18.0	14.0	-22.0
2772	HAMBURG	K	16.0	22.0	37.5
		1	12.5	13.0	4.0
		2	19.0	11.5	-40.0
		3	22.0	18.0	-18.0
2781	HAMPTON-DUMONT	K	17.5	21.0	20.0
		1	21.3	18.8	-12.0
		2	17.4	21.0	20.7
		3	18.8	18.2	-3.2
2826	HARLAN	K	20.0	17.8	-11.0
		1	21.4	20.2	-5.6
		2	21.2	20.8	-1.9
		3	20.8	21.4	2.9
2834	HARMONY	K	16.0	14.5	-9.4
		1	18.0	14.5	-19.0
		2	13.5	19.0	40.7
		3	14.0	15.0	7.1
2846	HARRIS-LAKE PARK	K	22.0	26.0	18.2
		1	27.0	19.0	-30.0
		2	19.0	30.0	57.9
		3	16.0	21.0	31.3
2862	HARTLEY-MELVIN-SANBORN	K	15.3	16.0	4.6
		1	18.0	17.0	-5.6
		2	16.3	19.0	16.6
		3	20.7	15.7	-24.0
2977	HIGHLAND	K	14.7	16.7	13.6
		1	14.3	15.3	7.0
		2	12.3	17.0	38.2
		3	19.3	15.0	-22.0
2988	HINTON	K	20.5	20.0	-2.4
		1	15.0	16.3	8.7
		2	23.0	21.5	-6.5
		3	20.5	25.5	24.4

Source: Iowa Department of Education, Bureau of Planning, Research, Development and Evaluation, Basic Educational Data Survey, Class Size Survey File

**IOWA PUBLIC SCHOOL DISTRICT  
AVERAGE CLASS SIZE (AVGCS) FOR KINDERGARTEN  
THROUGH THIRD GRADE  
2006-2007 AND 2007-2008 SCHOOL YEARS**

District Number	District Name	Grade	2006-2007 AVGCS	2007-2008 AVGCS	Percent Change
2766	H-L-V	K	24.0	26.0	8.3
		1	23.0	23.0	0.0
		2	12.0	22.0	83.3
		3	13.0	24.0	84.6
3029	HOWARD-WINNESHIEK	K	16.0	15.6	-2.5
		1	16.8	15.2	-9.5
		2	16.8	18.2	8.3
		3	16.6	17.0	2.4
3033	HUBBARD-RADCLIFFE	K	17.5	17.5	0.0
		1	12.0	14.0	16.7
		2	14.5	20.0	37.9
		3	NA	NA	NA
3042	HUDSON	K	17.7	21.5	21.5
		1	21.0	16.0	-24.0
		2	17.3	21.5	24.3
		3	18.3	16.7	-8.7
3060	HUMBOLDT	K	16.8	20.3	20.8
		1	17.4	18.3	5.2
		2	20.0	20.8	4.0
		3	22.8	20.8	-8.8
3168	IKM	K	12.5	12.5	0.0
		1	11.5	13.0	13.0
		2	14.5	11.5	-21.0
		3	15.0	14.0	-6.7
3105	INDEPENDENCE	K	17.9	16.9	-5.6
		1	15.0	16.7	11.3
		2	19.5	17.6	-9.7
		3	17.5	17.4	-0.6
3114	INDIANOLA	K	20.4	20.9	2.5
		1	20.8	22.2	6.7
		2	21.5	20.9	-2.8
		3	22.7	22.6	-0.4
3119	INTERSTATE 35	K	19.3	18.0	-6.7
		1	24.0	19.3	-20.0
		2	18.3	17.3	-5.5
		3	23.0	19.0	-17.0

Source: Iowa Department of Education, Bureau of Planning, Research, Development and Evaluation, Basic Educational Data Survey, Class Size Survey File

**IOWA PUBLIC SCHOOL DISTRICT  
AVERAGE CLASS SIZE (AVGCS) FOR KINDERGARTEN  
THROUGH THIRD GRADE  
2006-2007 AND 2007-2008 SCHOOL YEARS**

District Number	District Name	Grade	2006-2007 AVGCS	2007-2008 AVGCS	Percent Change
3141	IOWA CITY	K	19.6	20.0	2.0
		1	19.5	20.3	4.1
		2	20.3	18.8	-7.4
		3	21.3	22.5	5.6
3150	IOWA FALLS	K	18.0	16.6	-7.8
		1	17.2	18.2	5.8
		2	17.8	16.6	-6.7
		3	21.0	17.5	-17.0
3154	IOWA VALLEY	K	17.5	20.5	17.1
		1	18.5	18.0	-2.7
		2	18.5	20.0	8.1
		3	17.0	18.0	5.9
3186	JANESVILLE CONSOLIDATED	K	23.0	17.0	-26.0
		1	12.0	24.0	100.0
		2	17.0	13.0	-24.0
		3	19.0	18.0	-5.3
3195	JEFFERSON-SCRANTON	K	20.2	17.6	-13.0
		1	19.0	22.0	15.8
		2	23.3	23.3	0.0
		3	20.8	23.7	13.9
3204	JESUP	K	22.0	16.7	-24.0
		1	15.3	17.0	11.1
		2	18.7	22.0	17.6
		3	21.5	17.3	-20.0
3231	JOHNSTON	K	21.8	22.3	2.3
		1	22.9	22.5	-1.7
		2	21.3	24.2	13.6
		3	22.8	23.1	1.3
3312	KEOKUK	K	15.9	17.1	7.5
		1	16.7	18.6	11.4
		2	18.3	19.3	5.5
		3	18.4	17.6	-4.3
3330	KEOTA	K	13.5	14.0	3.7
		1	17.0	12.5	-27.0
		2	11.5	20.0	73.9
		3	13.0	11.0	-15.0

Source: Iowa Department of Education, Bureau of Planning, Research, Development and Evaluation, Basic Educational Data Survey, Class Size Survey File

**IOWA PUBLIC SCHOOL DISTRICT  
AVERAGE CLASS SIZE (AVGCS) FOR KINDERGARTEN  
THROUGH THIRD GRADE  
2006-2007 AND 2007-2008 SCHOOL YEARS**

District Number	District Name	Grade	2006-2007 AVGCS	2007-2008 AVGCS	Percent Change
3348	KINGSLEY-PIERSON	K	23.0	18.5	-20.0
		1	24.0	22.5	-6.3
		2	24.0	24.0	0.0
		3	13.5	24.0	77.8
3375	KNOXVILLE	K	20.1	18.9	-6.0
		1	18.1	22.3	23.2
		2	20.1	18.6	-7.5
		3	19.4	21.1	8.8
3420	LAKE MILLS	K	28.0	22.5	-20.0
		1	19.0	17.0	-11.0
		2	18.7	17.7	-5.3
		3	18.3	17.7	-3.3
3465	LAMONI	K	13.5	12.0	-11.0
		1	16.0	14.0	-13.0
		2	23.0	15.0	-35.0
		3	13.5	24.0	77.8
3537	LAURENS-MARATHON	K	20.0	27.0	35.0
		1	13.0	12.0	-7.7
		2	14.0	17.0	21.4
		3	10.5	14.0	33.3
3555	LAWTON-BRONSON	K	16.7	15.5	-7.2
		1	17.0	18.0	5.9
		2	23.5	19.0	-19.0
		3	17.0	26.0	52.9
3600	LE MARS	K	20.7	18.4	-11.0
		1	18.1	20.4	12.7
		2	18.4	18.4	0.0
		3	21.4	18.5	-14.0
3609	LENOX	K	15.5	12.0	-23.0
		1	14.0	13.5	-3.6
		2	25.0	14.5	-42.0
		3	25.0	29.0	16.0
3645	LEWIS CENTRAL	K	24.9	18.7	-25.0
		1	23.5	21.3	-9.4
		2	25.4	24.7	-2.8
		3	26.3	25.9	-1.5

Source: Iowa Department of Education, Bureau of Planning, Research, Development and Evaluation, Basic Educational Data Survey, Class Size Survey File



**IOWA PUBLIC SCHOOL DISTRICT  
AVERAGE CLASS SIZE (AVGCS) FOR KINDERGARTEN  
THROUGH THIRD GRADE  
2006-2007 AND 2007-2008 SCHOOL YEARS**

District Number	District Name	Grade	2006-2007 AVGCS	2007-2008 AVGCS	Percent Change
3715	LINN-MAR	K	20.6	20.9	1.5
		1	22.2	21.6	-2.7
		2	23.8	24.2	1.7
		3	22.3	23.7	6.3
3744	LISBON	K	13.0	15.0	15.4
		1	15.0	16.0	6.7
		2	19.5	21.5	10.3
		3	22.5	19.0	-16.0
3798	LOGAN-MAGNOLIA	K	17.3	21.5	24.3
		1	19.0	18.3	-3.7
		2	17.7	22.0	24.3
		3	21.5	20.5	-4.7
3816	LONE TREE	K	18.5	19.0	2.7
		1	18.5	17.5	-5.4
		2	15.0	16.5	10.0
		3	20.5	15.5	-24.0
3841	LOUISA-MUSCATINE	K	16.5	15.3	-7.3
		1	17.7	15.3	-14.0
		2	16.8	16.7	-0.6
		3	21.0	16.8	-20.0
3906	LYNNVILLE-SULLY	K	15.0	16.5	10.0
		1	18.0	16.0	-11.0
		2	14.5	19.0	31.0
		3	16.0	14.5	-9.4
3942	MADRID	K	20.3	24.5	20.7
		1	16.7	19.0	13.8
		2	23.0	18.0	-22.0
		3	24.5	21.5	-12.0
3978	MALVERN	K	19.0	15.5	-18.0
		1	14.0	23.0	64.3
		2	22.0	23.0	4.5
		3	16.5	22.0	33.3
4014	MANNING	K	19.5	19.5	0.0
		1	22.5	28.0	24.4
		2	22.0	20.5	-6.8
		3	19.0	22.0	15.8

Source: Iowa Department of Education, Bureau of Planning, Research, Development and Evaluation, Basic Educational Data Survey, Class Size Survey File

**IOWA PUBLIC SCHOOL DISTRICT  
AVERAGE CLASS SIZE (AVGCS) FOR KINDERGARTEN  
THROUGH THIRD GRADE  
2006-2007 AND 2007-2008 SCHOOL YEARS**

District Number	District Name	Grade	2006-2007 AVGCS	2007-2008 AVGCS	Percent Change
4023	MANSON NORTHWEST WEBSTER	K	15.3	13.3	-13.0
		1	16.5	21.0	27.3
		2	15.3	15.0	-2.0
		3	15.5	24.0	54.8
4033	MAPLE VALLEY	K	15.0	13.0	-13.0
		1	15.0	19.0	26.7
		2	14.0	11.0	-21.0
		3	16.0	19.0	18.8
4041	MAQUOKETA	K	16.2	18.6	14.8
		1	19.2	18.0	-6.3
		2	19.6	20.4	4.1
		3	20.5	20.4	-0.5
4043	MAQUOKETA VALLEY	K	16.0	15.3	-4.4
		1	16.7	15.0	-10.0
		2	18.0	19.0	5.6
		3	16.3	19.0	16.6
4068	MARCUS-MERIDEN-CLEGHORN	K	11.0	12.0	9.1
		1	12.5	11.0	-12.0
		2	18.0	12.5	-31.0
		3	17.5	17.5	0.0
4086	MARION INDEPENDENT	K	24.6	21.0	-15.0
		1	22.1	23.6	6.8
		2	22.3	21.4	-4.0
		3	20.3	22.0	8.4
4104	MARSHALLTOWN	K	24.6	21.8	-11.0
		1	22.4	22.2	-0.9
		2	21.7	22.6	4.1
		3	22.3	22.3	0.0
4122	MARTENSDALE-ST MARYS	K	19.5	16.5	-15.0
		1	16.0	20.0	25.0
		2	16.5	17.5	6.1
		3	15.5	18.0	16.1
4131	MASON CITY	K	21.4	25.3	18.2
		1	21.7	22.3	2.8
		2	19.8	24.0	21.2
		3	21.0	24.5	16.7

Source: Iowa Department of Education, Bureau of Planning, Research, Development and Evaluation, Basic Educational Data Survey, Class Size Survey File

**IOWA PUBLIC SCHOOL DISTRICT  
AVERAGE CLASS SIZE (AVGCS) FOR KINDERGARTEN  
THROUGH THIRD GRADE  
2006-2007 AND 2007-2008 SCHOOL YEARS**

District Number	District Name	Grade	2006-2007 AVGCS	2007-2008 AVGCS	Percent Change
4203	MEDIAPOLIS	K	19.0	17.0	-11.0
		1	17.7	19.3	9.0
		2	22.3	18.3	-18.0
		3	21.0	22.3	6.2
4212	MELCHER-DALLAS	K	13.5	12.0	-11.0
		1	15.5	22.0	41.9
		2	15.0	14.0	-6.7
		3	23.0	18.0	-22.0
4419	MFL MARMAC	K	18.3	20.7	13.1
		1	19.3	20.0	3.6
		2	24.3	19.3	-21.0
		3	19.7	23.3	18.3
4269	MIDLAND	K	16.3	15.7	-3.7
		1	13.0	18.0	38.5
		2	15.5	15.5	0.0
		3	21.0	16.0	-24.0
4271	MID-PRAIRIE	K	19.3	18.4	-4.7
		1	16.8	15.8	-6.0
		2	17.6	16.4	-6.8
		3	17.0	21.0	23.5
4356	MISSOURI VALLEY	K	24.3	17.0	-30.0
		1	15.7	18.5	17.8
		2	22.3	17.7	-21.0
		3	17.0	21.3	25.3
4149	MOC-FLOYD VALLEY	K	17.0	15.8	-7.1
		1	17.8	17.4	-2.2
		2	15.0	19.2	28.0
		3	15.8	17.8	12.7
4437	MONTEZUMA	K	18.0	17.0	-5.6
		1	23.0	17.0	-26.0
		2	12.5	22.0	76.0
		3	16.0	13.0	-19.0
4446	MONTICELLO	K	19.0	21.0	10.5
		1	17.5	21.0	20.0
		2	20.7	19.0	-8.2
		3	22.0	21.7	-1.4

Source: Iowa Department of Education, Bureau of Planning, Research, Development and Evaluation, Basic Educational Data Survey, Class Size Survey File

**IOWA PUBLIC SCHOOL DISTRICT  
AVERAGE CLASS SIZE (AVGCS) FOR KINDERGARTEN  
THROUGH THIRD GRADE  
2006-2007 AND 2007-2008 SCHOOL YEARS**

District Number	District Name	Grade	2006-2007 AVGCS	2007-2008 AVGCS	Percent Change
4491	MORAVIA	K	19.0	13.5	-29.0
		1	14.5	19.0	31.0
		2	13.0	14.5	11.5
		3	16.0	14.0	-13.0
4505	MORMON TRAIL	K	18.0	18.0	0.0
		1	18.0	15.0	-17.0
		2	18.0	18.0	0.0
		3	21.0	17.0	-19.0
4509	MORNING SUN	K	19.0	16.0	-16.0
		1	15.0	19.0	26.7
		2	16.0	13.0	-19.0
		3	20.0	14.0	-30.0
4518	MOULTON-UDELL	K	13.0	11.0	-15.0
		1	24.0	14.0	-42.0
		2	22.0	24.0	9.1
		3	16.0	19.0	18.8
4527	MOUNT AYR	K	24.0	18.0	-25.0
		1	13.7	15.0	9.5
		2	21.5	18.5	-14.0
		3	24.0	20.5	-15.0
4536	MOUNT PLEASANT	K	21.4	19.9	-7.0
		1	21.6	20.9	-3.2
		2	20.4	21.0	2.9
		3	20.4	19.4	-4.9
4554	MOUNT VERNON	K	20.5	21.5	4.9
		1	21.5	17.8	-17.0
		2	19.4	23.0	18.6
		3	24.0	20.2	-16.0
4572	MURRAY	K	14.0	24.0	71.4
		1	20.0	15.5	-23.0
		2	21.0	16.0	-24.0
		3	24.0	20.0	-17.0
4581	MUSCATINE	K	21.6	18.4	-15.0
		1	21.2	20.3	-4.2
		2	18.8	21.9	16.5
		3	21.1	19.0	-10.0

Source: Iowa Department of Education, Bureau of Planning, Research, Development and Evaluation, Basic Educational Data Survey, Class Size Survey File

**IOWA PUBLIC SCHOOL DISTRICT  
AVERAGE CLASS SIZE (AVGCS) FOR KINDERGARTEN  
THROUGH THIRD GRADE  
2006-2007 AND 2007-2008 SCHOOL YEARS**

District Number	District Name	Grade	2006-2007 AVGCS	2007-2008 AVGCS	Percent Change
4599	NASHUA-PLAINFIELD	K	17.7	16.3	-7.9
		1	15.0	18.3	22.0
		2	14.7	14.5	-1.4
		3	19.3	22.5	16.6
4617	NEVADA	K	18.5	19.8	7.0
		1	20.3	19.3	-4.9
		2	22.7	23.7	4.4
		3	19.7	22.7	15.2
4662	NEW HAMPTON	K	17.7	16.8	-5.1
		1	20.3	18.0	-11.0
		2	22.0	21.0	-4.5
		3	19.0	23.0	21.1
4689	NEW LONDON	K	15.5	18.0	16.1
		1	17.5	17.0	-2.9
		2	16.0	18.5	15.6
		3	15.5	15.7	1.3
4698	NEW MARKET	K	7.0	9.0	28.6
		1	7.0	5.0	-29.0
		2	NA	7.0	NA
		3	NA	NA	NA
4644	NEWELL-FONDA	K	16.0	15.5	-3.1
		1	14.0	18.0	28.6
		2	14.5	14.0	-3.4
		3	18.0	18.5	2.8
4725	NEWTON	K	18.8	19.3	2.7
		1	22.2	21.0	-5.4
		2	20.9	20.9	0.0
		3	20.5	20.4	-0.5
4751	NISHNA VALLEY	K	16.0	17.0	6.3
		1	13.0	15.0	15.4
		2	16.0	16.0	0.0
		3	15.0	19.0	26.7
2673	NODAWAY VALLEY	K	22.5	19.7	-12.0
		1	22.0	22.5	2.3
		2	19.3	24.0	24.4
		3	16.3	18.3	12.3

Source: Iowa Department of Education, Bureau of Planning, Research, Development and Evaluation, Basic Educational Data Survey, Class Size Survey File

**IOWA PUBLIC SCHOOL DISTRICT  
AVERAGE CLASS SIZE (AVGCS) FOR KINDERGARTEN  
THROUGH THIRD GRADE  
2006-2007 AND 2007-2008 SCHOOL YEARS**

District Number	District Name	Grade	2006-2007 AVGCS	2007-2008 AVGCS	Percent Change
4761	NORA SPRINGS-ROCK FALLS	K	9.5	17.0	78.9
		1	16.5	20.0	21.2
		2	19.0	15.0	-21.0
		3	12.0	18.5	54.2
3691	NORTH CEDAR	K	17.3	15.0	-13.0
		1	16.3	13.3	-18.0
		2	13.5	16.0	18.5
		3	17.5	14.0	-20.0
4772	NORTH CENTRAL	K	17.0	20.0	17.6
		1	14.0	19.5	39.3
		2	21.0	14.5	-31.0
		3	20.0	21.5	7.5
4774	NORTH FAYETTE	K	19.8	16.5	-17.0
		1	20.0	20.7	3.5
		2	17.7	18.7	5.6
		3	21.3	17.3	-19.0
873	NORTH IOWA	K	15.0	17.5	16.7
		1	17.5	14.5	-17.0
		2	16.5	17.0	3.0
		3	17.5	16.5	-5.7
4778	NORTH KOSSUTH	K	11.0	16.0	45.5
		1	13.0	19.0	46.2
		2	18.0	24.0	33.3
		3	17.0	19.0	11.8
4777	NORTH LINN	K	18.3	16.5	-9.8
		1	22.5	19.0	-16.0
		2	24.5	27.0	10.2
		3	25.5	24.5	-3.9
4776	NORTH MAHASKA	K	17.0	13.0	-24.0
		1	25.5	23.0	-9.8
		2	14.0	27.5	96.4
		3	20.0	17.0	-15.0
4779	NORTH POLK	K	17.4	20.0	14.9
		1	17.3	18.4	6.4
		2	16.4	18.8	14.6
		3	19.8	20.8	5.1

Source: Iowa Department of Education, Bureau of Planning, Research, Development and Evaluation, Basic Educational Data Survey, Class Size Survey File

**IOWA PUBLIC SCHOOL DISTRICT  
AVERAGE CLASS SIZE (AVGCS) FOR KINDERGARTEN  
THROUGH THIRD GRADE  
2006-2007 AND 2007-2008 SCHOOL YEARS**

District Number	District Name	Grade	2006-2007 AVGCS	2007-2008 AVGCS	Percent Change
4784	NORTH SCOTT	K	19.8	16.8	-15.0
		1	18.2	19.3	6.0
		2	19.9	17.2	-14.0
		3	20.1	20.4	1.5
4785	NORTH TAMA COUNTY	K	18.5	16.0	-14.0
		1	19.5	18.5	-5.1
		2	21.0	17.5	-17.0
		3	25.0	21.5	-14.0
4787	NORTH WINNESHIEK	K	11.5	12.0	4.3
		1	10.5	12.0	14.3
		2	22.0	20.0	-9.1
		3	19.0	24.0	26.3
4773	NORTHEAST	K	25.5	18.0	-29.0
		1	19.3	15.7	-19.0
		2	18.7	20.3	8.6
		3	20.0	17.0	-15.0
4775	NORTHEAST HAMILTON	K	18.0	17.0	-5.6
		1	19.0	20.0	5.3
		2	11.0	20.0	81.8
		3	23.0	14.0	-39.0
4788	NORTHWOOD-KENSETT	K	18.5	13.5	-27.0
		1	15.5	18.5	19.4
		2	20.0	16.5	-18.0
		3	28.0	18.5	-34.0
4797	NORWALK	K	19.9	18.8	-5.5
		1	21.3	20.7	-2.8
		2	21.0	20.3	-3.3
		3	21.4	22.0	2.8
4860	ODEBOLT-ARTHUR	K	13.0	21.0	61.5
		1	18.0	13.0	-28.0
		2	20.0	19.0	-5.0
		3	23.0	19.0	-17.0
4869	OELWEIN	K	18.8	17.5	-6.9
		1	19.2	17.0	-12.0
		2	19.0	20.2	6.3
		3	20.4	17.8	-13.0

Source: Iowa Department of Education, Bureau of Planning, Research, Development and Evaluation, Basic Educational Data Survey, Class Size Survey File

**IOWA PUBLIC SCHOOL DISTRICT  
AVERAGE CLASS SIZE (AVGCS) FOR KINDERGARTEN  
THROUGH THIRD GRADE  
2006-2007 AND 2007-2008 SCHOOL YEARS**

District Number	District Name	Grade	2006-2007 AVGCS	2007-2008 AVGCS	Percent Change
4878	OGDEN	K	15.3	15.7	2.6
		1	15.7	15.3	-2.5
		2	17.0	23.0	35.3
		3	18.0	17.0	-5.6
4890	OKOBOJI	K	19.3	22.0	14.0
		1	17.3	20.0	15.6
		2	21.3	17.3	-19.0
		3	20.3	20.7	2.0
4905	OLIN CONSOLIDATED	K	14.0	13.0	-7.1
		1	12.0	12.0	0.0
		2	17.0	20.0	17.6
		3	12.0	11.0	-8.3
4978	ORIENT-MACKSBURG	K	6.0	16.0	167.0
		1	18.0	9.0	-50.0
		2	11.0	18.0	63.6
		3	11.0	10.0	-9.1
4995	OSAGE	K	16.0	16.0	0.0
		1	16.5	16.5	0.0
		2	21.7	21.3	-1.8
		3	18.0	22.3	23.9
5013	OSKALOOSA	K	24.8	24.3	-2.0
		1	22.1	23.0	4.1
		2	22.0	21.8	-0.9
		3	22.9	21.1	-7.9
5049	OTTUMWA	K	20.6	19.3	-6.3
		1	18.8	18.3	-2.7
		2	19.8	17.8	-10.0
		3	20.8	19.8	-4.8
5121	PANORAMA	K	17.3	18.0	4.0
		1	17.3	17.0	-1.7
		2	22.0	16.3	-26.0
		3	18.7	22.3	19.3
5139	PATON-CHURDAN	K	16.0	14.0	-13.0
		1	10.0	18.0	80.0
		2	9.0	12.0	33.3
		3	15.0	9.0	-40.0

Source: Iowa Department of Education, Bureau of Planning, Research, Development and Evaluation, Basic Educational Data Survey, Class Size Survey File



**IOWA PUBLIC SCHOOL DISTRICT  
AVERAGE CLASS SIZE (AVGCS) FOR KINDERGARTEN  
THROUGH THIRD GRADE  
2006-2007 AND 2007-2008 SCHOOL YEARS**

District Number	District Name	Grade	2006-2007 AVGCS	2007-2008 AVGCS	Percent Change
5160	PCM	K	16.3	21.3	30.7
		1	17.5	22.7	29.7
		2	19.7	17.3	-12.0
		3	16.6	20.3	22.3
5163	PEKIN	K	21.0	18.3	-13.0
		1	17.7	18.7	5.6
		2	17.7	17.3	-2.3
		3	15.7	19.0	21.0
5166	PELLA	K	19.4	21.1	8.8
		1	22.1	20.3	-8.1
		2	22.1	23.1	4.5
		3	23.0	25.0	8.7
5184	PERRY	K	21.0	19.1	-9.0
		1	19.4	21.9	12.9
		2	23.0	23.0	0.0
		3	22.3	22.8	2.2
5250	PLEASANT VALLEY	K	20.8	20.8	0.0
		1	20.3	21.5	5.9
		2	19.4	21.8	12.4
		3	20.3	20.6	1.5
5256	PLEASANTVILLE	K	20.3	25.0	23.2
		1	22.0	21.7	-1.4
		2	21.5	20.5	-4.7
		3	20.0	25.0	25.0
5283	POCAHONTAS AREA	K	15.7	16.0	1.9
		1	12.0	17.0	41.7
		2	12.0	13.0	8.3
		3	12.0	14.0	16.7
5301	POMEROY-PALMER	K	6.0	14.0	133.0
		1	18.0	6.0	-67.0
		2	18.0	18.0	0.0
		3	14.0	15.0	7.1
5310	POSTVILLE	K	20.0	14.3	-29.0
		1	23.0	15.7	-32.0
		2	21.5	22.0	2.3
		3	17.0	22.5	32.4

Source: Iowa Department of Education, Bureau of Planning, Research, Development and Evaluation, Basic Educational Data Survey, Class Size Survey File

**IOWA PUBLIC SCHOOL DISTRICT  
AVERAGE CLASS SIZE (AVGCS) FOR KINDERGARTEN  
THROUGH THIRD GRADE  
2006-2007 AND 2007-2008 SCHOOL YEARS**

District Number	District Name	Grade	2006-2007 AVGCS	2007-2008 AVGCS	Percent Change
5325	PRAIRIE VALLEY	K	23.5	14.7	-37.0
		1	26.0	15.3	-41.0
		2	23.5	16.0	-32.0
		3	18.7	23.5	25.7
5328	PRESCOTT	K	9.0	2.0	-78.0
		1	NA	9.0	NA
		2	NA	4.0	NA
		3	NA	1.0	NA
5337	PRESTON	K	13.5	12.5	-7.4
		1	13.5	14.0	3.7
		2	13.5	13.0	-3.7
		3	15.5	14.0	-9.7
5463	RED OAK	K	19.8	19.6	-1.0
		1	20.2	19.0	-5.9
		2	20.3	19.0	-6.4
		3	20.5	19.5	-4.9
5486	REMSEN-UNION	K	19.0	18.0	-5.3
		1	14.0	18.0	28.6
		2	14.5	14.5	0.0
		3	24.0	14.5	-40.0
5508	RICEVILLE	K	14.0	17.0	21.4
		1	11.5	12.0	4.3
		2	19.0	23.0	21.1
		3	16.5	16.0	-3.0
1975	RIVER VALLEY	K	19.0	20.0	5.3
		1	19.5	17.0	-13.0
		2	12.5	19.5	56.0
		3	13.0	13.5	3.8
5510	RIVERSIDE	K	17.5	19.0	8.6
		1	17.5	20.5	17.1
		2	23.0	18.5	-20.0
		3	23.0	24.5	6.5
5607	ROCK VALLEY	K	15.7	15.7	0.0
		1	20.0	14.7	-27.0
		2	18.0	20.0	11.1
		3	17.0	17.7	4.1

Source: Iowa Department of Education, Bureau of Planning, Research, Development and Evaluation, Basic Educational Data Survey, Class Size Survey File

**IOWA PUBLIC SCHOOL DISTRICT  
AVERAGE CLASS SIZE (AVGCS) FOR KINDERGARTEN  
THROUGH THIRD GRADE  
2006-2007 AND 2007-2008 SCHOOL YEARS**

District Number	District Name	Grade	2006-2007 AVGCS	2007-2008 AVGCS	Percent Change
5625	ROCKWELL CITY-LYTTON	K	18.0	15.3	-15.0
		1	16.0	20.0	25.0
		2	15.0	15.0	0.0
		3	20.0	13.5	-33.0
5616	ROCKWELL-SWALEDALE	K	20.0	11.0	-45.0
		1	24.0	19.0	-21.0
		2	19.0	21.0	10.5
		3	13.0	19.0	46.2
5643	ROLAND-STORY	K	17.5	18.4	5.1
		1	16.3	18.8	15.3
		2	18.3	16.5	-9.8
		3	22.7	24.0	5.7
5697	RUDD-ROCKFORD-MARBLE ROCK	K	20.0	20.0	0.0
		1	18.5	20.0	8.1
		2	17.5	18.5	5.7
		3	19.0	18.5	-2.6
5715	RUSSELL	K	NA	11.0	NA
		1	NA	7.0	NA
		2	NA	NA	NA
		3	NA	NA	NA
5724	RUTHVEN-AYRSHIRE	K	16.0	20.0	25.0
		1	24.0	18.0	-25.0
		2	22.0	23.0	4.5
		3	14.0	20.0	42.9
5742	SAC	K	16.0	21.0	31.3
		1	15.0	17.0	13.3
		2	19.0	14.0	-26.0
		3	15.0	19.5	30.0
5805	SAYDEL	K	21.5	22.0	2.3
		1	23.5	22.0	-6.4
		2	23.8	23.8	0.0
		3	28.0	23.0	-18.0
5823	SCHALLER-CRESTLAND	K	20.5	14.0	-32.0
		1	23.0	29.0	26.1
		2	16.5	21.0	27.3
		3	17.0	15.0	-12.0

Source: Iowa Department of Education, Bureau of Planning, Research, Development and Evaluation, Basic Educational Data Survey, Class Size Survey File

**IOWA PUBLIC SCHOOL DISTRICT  
AVERAGE CLASS SIZE (AVGCS) FOR KINDERGARTEN  
THROUGH THIRD GRADE  
2006-2007 AND 2007-2008 SCHOOL YEARS**

District Number	District Name	Grade	2006-2007 AVGCS	2007-2008 AVGCS	Percent Change
5832	SCHLESWIG	K	10.0	22.0	120.0
		1	12.0	9.0	-25.0
		2	12.5	11.5	-8.0
		3	23.0	13.0	-44.0
5868	SENTRAL	K	12.0	8.0	-33.0
		1	19.0	15.0	-21.0
		2	13.0	19.0	46.2
		3	11.0	15.0	36.4
5877	SERGEANT BLUFF-LUTON	K	20.3	18.7	-7.9
		1	20.8	20.2	-2.9
		2	21.8	20.2	-7.3
		3	21.8	22.0	0.9
5895	SEYMOUR	K	21.0	17.0	-19.0
		1	23.0	21.0	-8.7
		2	15.0	19.0	26.7
		3	23.0	11.0	-52.0
5922	SHEFFIELD-CHAPIN	K	19.0	14.5	-24.0
		1	14.0	16.5	17.9
		2	18.5	14.5	-22.0
		3	14.5	18.0	24.1
5949	SHELDON	K	17.3	19.5	12.7
		1	17.0	18.8	10.6
		2	14.5	17.8	22.8
		3	17.5	15.0	-14.0
5976	SHENANDOAH	K	16.2	16.4	1.2
		1	19.5	20.8	6.7
		2	19.0	18.5	-2.6
		3	18.3	21.3	16.4
5994	SIBLEY-OCHEYEDAN	K	21.0	17.7	-16.0
		1	18.3	20.7	13.1
		2	18.7	20.3	8.6
		3	18.7	19.3	3.2
6003	SIDNEY	K	18.0	15.0	-17.0
		1	15.0	19.0	26.7
		2	13.5	16.5	22.2
		3	24.0	14.0	-42.0

Source: Iowa Department of Education, Bureau of Planning, Research, Development and Evaluation, Basic Educational Data Survey, Class Size Survey File

**IOWA PUBLIC SCHOOL DISTRICT  
AVERAGE CLASS SIZE (AVGCS) FOR KINDERGARTEN  
THROUGH THIRD GRADE  
2006-2007 AND 2007-2008 SCHOOL YEARS**

District Number	District Name	Grade	2006-2007 AVGCS	2007-2008 AVGCS	Percent Change
6012	SIGOURNEY	K	20.5	17.3	-16.0
		1	14.7	13.3	-9.5
		2	20.0	20.0	0.0
		3	21.5	22.5	4.7
6030	SIOUX CENTER	K	16.6	16.3	-1.8
		1	15.0	16.2	8.0
		2	15.3	16.8	9.8
		3	19.8	22.3	12.6
6035	SIOUX CENTRAL	K	17.0	13.5	-21.0
		1	11.5	14.5	26.1
		2	16.0	24.0	50.0
		3	21.0	18.0	-14.0
6039	SIOUX CITY	K	18.6	18.2	-2.2
		1	18.7	18.8	0.5
		2	18.8	20.6	9.6
		3	21.5	20.5	-4.7
6093	SOLON	K	17.2	18.6	8.1
		1	19.3	17.0	-12.0
		2	20.0	20.3	1.5
		3	22.5	20.0	-11.0
6092	SOUTH CLAY	K	4.0	9.0	125.0
		1	7.0	6.0	-14.0
		2	9.0	6.0	-33.0
		3	8.0	10.0	25.0
6095	SOUTH HAMILTON	K	18.3	18.3	0.0
		1	16.0	21.0	31.3
		2	19.0	17.7	-6.8
		3	18.3	21.0	14.8
6099	SOUTH O'BRIEN	K	17.3	15.0	-13.0
		1	21.5	20.5	-4.7
		2	18.0	21.5	19.4
		3	24.0	18.0	-25.0
6097	SOUTH PAGE	K	18.0	5.0	-72.0
		1	14.0	16.0	14.3
		2	15.0	15.0	0.0
		3	14.0	13.0	-7.1

Source: Iowa Department of Education, Bureau of Planning, Research, Development and Evaluation, Basic Educational Data Survey, Class Size Survey File

**IOWA PUBLIC SCHOOL DISTRICT  
AVERAGE CLASS SIZE (AVGCS) FOR KINDERGARTEN  
THROUGH THIRD GRADE  
2006-2007 AND 2007-2008 SCHOOL YEARS**

District Number	District Name	Grade	2006-2007 AVGCS	2007-2008 AVGCS	Percent Change
6098	SOUTH TAMA COUNTY	K	18.8	18.8	0.0
		1	19.5	17.3	-11.0
		2	18.2	22.6	24.2
		3	19.8	18.0	-9.1
6100	SOUTH WINNESHIEK	K	13.0	14.0	7.7
		1	12.0	15.5	29.2
		2	18.0	13.0	-28.0
		3	16.5	18.5	12.1
6101	SOUTHEAST POLK	K	21.1	21.4	1.4
		1	22.4	21.3	-4.9
		2	24.7	23.1	-6.5
		3	24.1	23.3	-3.3
6094	SOUTHEAST WARREN	K	21.0	19.5	-7.1
		1	19.0	20.0	5.3
		2	15.0	22.5	50.0
		3	17.0	14.0	-18.0
6096	SOUTHEAST WEBSTER GRAND	K	14.3	13.7	-4.2
		1	19.5	13.7	-30.0
		2	20.5	19.0	-7.3
		3	17.0	21.0	23.5
6091	SOUTHERN CAL	K	15.5	11.0	-29.0
		1	13.5	16.5	22.2
		2	15.0	15.0	0.0
		3	21.0	14.5	-31.0
6102	SPENCER	K	22.5	22.8	1.3
		1	20.2	21.7	7.4
		2	23.2	21.0	-9.5
		3	23.4	24.0	2.6
6120	SPIRIT LAKE	K	18.4	20.0	8.7
		1	18.0	18.0	0.0
		2	20.6	23.4	13.6
		3	20.0	21.4	7.0
6138	SPRINGVILLE	K	15.5	14.0	-9.7
		1	17.5	15.0	-14.0
		2	15.0	17.5	16.7
		3	15.5	17.0	9.7

Source: Iowa Department of Education, Bureau of Planning, Research, Development and Evaluation, Basic Educational Data Survey, Class Size Survey File

**IOWA PUBLIC SCHOOL DISTRICT  
AVERAGE CLASS SIZE (AVGCS) FOR KINDERGARTEN  
THROUGH THIRD GRADE  
2006-2007 AND 2007-2008 SCHOOL YEARS**

District Number	District Name	Grade	2006-2007 AVGCS	2007-2008 AVGCS	Percent Change
5751	ST ANSGAR	K	15.0	15.0	0.0
		1	16.3	16.3	0.0
		2	17.7	16.0	-9.6
		3	22.5	17.0	-24.0
6165	STANTON	K	20.0	18.0	-10.0
		1	21.0	15.0	-29.0
		2	13.0	22.0	69.2
		3	18.0	14.0	-22.0
6175	STARMONT	K	16.8	14.0	-17.0
		1	17.3	19.0	9.8
		2	15.3	17.7	15.7
		3	15.7	23.0	46.5
6219	STORM LAKE	K	17.4	20.3	16.7
		1	18.3	18.3	0.0
		2	22.8	20.8	-8.8
		3	24.2	21.7	-10.0
6246	STRATFORD	K	10.0	19.0	90.0
		1	15.0	10.0	-33.0
		2	14.0	14.0	0.0
		3	12.0	14.0	16.7
6273	SUMNER	K	14.5	25.0	72.4
		1	19.0	14.5	-24.0
		2	19.0	20.0	5.3
		3	23.0	19.0	-17.0
6345	TERRIL	K	7.0	12.0	71.4
		1	12.0	8.0	-33.0
		2	5.0	13.0	160.0
		3	10.0	NA	NA
6408	TIPTON	K	17.5	19.7	12.6
		1	22.0	20.7	-5.9
		2	20.0	21.7	8.5
		3	16.3	22.0	35.0
6417	TITONKA CONSOLIDATED	K	12.0	7.0	-42.0
		1	9.0	12.0	33.3
		2	14.0	8.0	-43.0
		3	13.0	14.0	7.7

Source: Iowa Department of Education, Bureau of Planning, Research, Development and Evaluation, Basic Educational Data Survey, Class Size Survey File

**IOWA PUBLIC SCHOOL DISTRICT  
AVERAGE CLASS SIZE (AVGCS) FOR KINDERGARTEN  
THROUGH THIRD GRADE  
2006-2007 AND 2007-2008 SCHOOL YEARS**

District Number	District Name	Grade	2006-2007 AVGCS	2007-2008 AVGCS	Percent Change
6453	TREYNOR	K	19.0	18.0	-5.3
		1	17.3	20.7	19.7
		2	19.3	18.0	-6.7
		3	18.7	20.3	8.6
6460	TRI-CENTER	K	17.0	21.7	27.6
		1	17.7	17.3	-2.3
		2	13.7	18.3	33.6
		3	19.3	15.3	-21.0
6462	TRI-COUNTY	K	15.0	16.0	6.7
		1	22.0	17.0	-23.0
		2	21.0	23.0	9.5
		3	19.0	21.0	10.5
6471	TRIPOLI	K	16.5	19.0	15.2
		1	16.0	16.5	3.1
		2	19.5	17.0	-13.0
		3	15.0	20.5	36.7
6509	TURKEY VALLEY	K	13.5	13.0	-3.7
		1	12.0	14.0	16.7
		2	23.0	24.0	4.3
		3	19.0	23.0	21.1
6512	TWIN CEDARS	K	24.0	20.0	-17.0
		1	18.5	12.5	-32.0
		2	17.5	20.5	17.1
		3	12.5	19.5	56.0
6516	TWIN RIVERS	K	12.0	6.0	-50.0
		1	7.0	12.0	71.4
		2	11.0	7.0	-36.0
		3	11.0	14.0	27.3
6534	UNDERWOOD	K	16.3	21.7	33.1
		1	19.7	17.0	-14.0
		2	17.5	21.7	24.0
		3	20.0	23.3	16.5
6536	UNION	K	16.0	18.4	15.0
		1	19.2	16.0	-17.0
		2	17.0	20.4	20.0
		3	19.8	16.8	-15.0

Source: Iowa Department of Education, Bureau of Planning, Research, Development and Evaluation, Basic Educational Data Survey, Class Size Survey File



**IOWA PUBLIC SCHOOL DISTRICT  
AVERAGE CLASS SIZE (AVGCS) FOR KINDERGARTEN  
THROUGH THIRD GRADE  
2006-2007 AND 2007-2008 SCHOOL YEARS**

District Number	District Name	Grade	2006-2007 AVGCS	2007-2008 AVGCS	Percent Change
6561	UNITED	K	18.0	22.0	22.2
		1	13.5	16.0	18.5
		2	18.0	22.0	22.2
		3	13.5	20.0	48.1
6579	URBANDALE	K	16.1	18.8	16.8
		1	20.0	19.0	-5.0
		2	22.8	19.7	-14.0
		3	21.2	20.6	-2.8
6591	VALLEY	K	14.7	18.5	25.9
		1	15.5	13.3	-14.0
		2	15.5	15.5	0.0
		3	21.0	16.5	-21.0
6592	VAN BUREN	K	16.3	15.3	-6.1
		1	20.5	16.0	-22.0
		2	16.7	16.0	-4.2
		3	25.5	15.3	-40.0
6615	VAN METER	K	18.3	16.0	-13.0
		1	15.3	16.0	4.6
		2	17.5	15.0	-14.0
		3	18.3	22.5	23.0
6633	VENTURA	K	14.5	10.0	-31.0
		1	21.0	13.5	-36.0
		2	17.0	19.0	11.8
		3	13.0	19.0	46.2
6651	VILLISCA	K	16.0	12.5	-22.0
		1	16.0	16.0	0.0
		2	18.0	15.0	-17.0
		3	13.5	21.0	55.6
6660	VINTON-SHELLSBURG	K	16.1	16.1	0.0
		1	16.8	17.0	1.2
		2	18.3	16.3	-11.0
		3	18.3	19.4	6.0
6700	WACO	K	17.5	15.5	-11.0
		1	20.5	16.5	-20.0
		2	17.5	20.5	17.1
		3	14.5	18.5	27.6

Source: Iowa Department of Education, Bureau of Planning, Research, Development and Evaluation, Basic Educational Data Survey, Class Size Survey File

**IOWA PUBLIC SCHOOL DISTRICT  
AVERAGE CLASS SIZE (AVGCS) FOR KINDERGARTEN  
THROUGH THIRD GRADE  
2006-2007 AND 2007-2008 SCHOOL YEARS**

District Number	District Name	Grade	2006-2007 AVGCS	2007-2008 AVGCS	Percent Change
6741	WALL LAKE VIEW AUBURN	K	15.0	15.5	3.3
		1	18.5	14.5	-22.0
		2	19.5	18.5	-5.1
		3	19.5	19.5	0.0
6750	WALNUT	K	16.0	16.0	0.0
		1	21.0	13.0	-38.0
		2	23.0	19.0	-17.0
		3	14.0	24.0	71.4
6759	WAPELLO	K	19.3	17.0	-12.0
		1	21.3	19.0	-11.0
		2	22.7	19.7	-13.0
		3	20.0	19.0	-5.0
6762	WAPSIE VALLEY	K	16.0	16.7	4.4
		1	15.7	17.7	12.7
		2	19.0	15.0	-21.0
		3	16.0	20.0	25.0
6768	WASHINGTON	K	20.3	20.3	0.0
		1	21.2	21.7	2.4
		2	19.0	20.5	7.9
		3	24.6	22.4	-8.9
6795	WATERLOO	K	21.6	18.5	-14.0
		1	19.2	21.9	14.1
		2	20.3	21.9	7.9
		3	22.5	21.5	-4.4
6822	WAUKEE	K	21.7	22.8	5.1
		1	21.8	22.5	3.2
		2	24.3	22.7	-6.6
		3	22.8	23.7	3.9
6840	WAVERLY-SHELL ROCK	K	21.3	21.8	2.3
		1	19.7	19.8	0.5
		2	21.5	19.7	-8.4
		3	17.8	21.8	22.5
6854	WAYNE	K	13.8	12.5	-9.4
		1	16.5	15.0	-9.1
		2	14.5	16.0	10.3
		3	15.5	14.5	-6.5

Source: Iowa Department of Education, Bureau of Planning, Research, Development and Evaluation, Basic Educational Data Survey, Class Size Survey File

**IOWA PUBLIC SCHOOL DISTRICT  
AVERAGE CLASS SIZE (AVGCS) FOR KINDERGARTEN  
THROUGH THIRD GRADE  
2006-2007 AND 2007-2008 SCHOOL YEARS**

District Number	District Name	Grade	2006-2007 AVGCS	2007-2008 AVGCS	Percent Change
6867	WEBSTER CITY	K	20.6	20.4	-1.0
		1	20.0	20.0	0.0
		2	22.4	20.0	-11.0
		3	20.2	24.0	18.8
6921	WEST BEND-MALLARD	K	16.0	14.0	-13.0
		1	9.5	17.0	78.9
		2	19.0	10.5	-45.0
		3	17.0	21.0	23.5
6930	WEST BRANCH	K	17.3	21.0	21.4
		1	18.3	17.0	-7.1
		2	16.3	17.3	6.1
		3	16.3	15.3	-6.1
6937	WEST BURLINGTON IND	K	16.3	18.0	10.4
		1	16.0	17.7	10.6
		2	16.0	17.7	10.6
		3	18.3	18.0	-1.6
6943	WEST CENTRAL	K	17.0	21.0	23.5
		1	25.0	18.0	-28.0
		2	15.0	24.0	60.0
		3	17.0	15.5	-8.8
6264	WEST CENTRAL VALLEY	K	20.3	15.8	-22.0
		1	15.3	15.8	3.3
		2	17.5	19.7	12.6
		3	17.3	17.0	-1.7
6950	WEST DELAWARE COUNTY	K	17.9	17.4	-2.8
		1	20.4	17.4	-15.0
		2	21.0	19.2	-8.6
		3	22.0	21.2	-3.6
6957	WEST DES MOINES	K	23.1	22.5	-2.6
		1	24.1	24.3	0.8
		2	23.7	22.9	-3.4
		3	24.2	23.9	-1.2
819	WEST HANCOCK	K	16.5	17.5	6.1
		1	27.5	19.0	-31.0
		2	22.0	26.0	18.2
		3	23.0	20.5	-11.0

Source: Iowa Department of Education, Bureau of Planning, Research, Development and Evaluation, Basic Educational Data Survey, Class Size Survey File

**IOWA PUBLIC SCHOOL DISTRICT  
AVERAGE CLASS SIZE (AVGCS) FOR KINDERGARTEN  
THROUGH THIRD GRADE  
2006-2007 AND 2007-2008 SCHOOL YEARS**

District Number	District Name	Grade	2006-2007 AVGCS	2007-2008 AVGCS	Percent Change
6969	WEST HARRISON	K	15.5	25.0	61.3
		1	21.0	15.0	-29.0
		2	15.5	26.0	67.7
		3	16.5	16.5	0.0
6975	WEST LIBERTY	K	20.8	20.4	-1.9
		1	18.6	19.0	2.2
		2	16.8	18.2	8.3
		3	18.3	17.8	-2.7
6983	WEST LYON	K	15.8	16.5	4.4
		1	16.7	15.0	-10.0
		2	15.0	16.7	11.3
		3	16.0	14.3	-11.0
6985	WEST MARSHALL	K	22.7	18.8	-17.0
		1	20.7	23.7	14.5
		2	16.7	19.3	15.6
		3	18.7	17.0	-9.1
6987	WEST MONONA	K	17.3	19.5	12.7
		1	15.0	16.7	11.3
		2	18.7	16.7	-11.0
		3	17.7	18.3	3.4
6990	WEST SIOUX	K	18.0	19.0	5.6
		1	18.0	16.3	-9.4
		2	21.5	16.0	-26.0
		3	23.5	24.0	2.1
6961	WESTERN DUBUQUE	K	18.2	18.0	-1.1
		1	20.6	16.9	-18.0
		2	20.3	21.6	6.4
		3	20.2	19.9	-1.5
6992	WESTWOOD	K	16.5	19.0	15.2
		1	19.7	18.0	-8.6
		2	18.5	18.7	1.1
		3	20.5	17.0	-17.0
7002	WHITING	K	19.0	19.0	0.0
		1	14.0	17.0	21.4
		2	13.0	16.0	23.1
		3	18.0	15.0	-17.0

Source: Iowa Department of Education, Bureau of Planning, Research, Development and Evaluation, Basic Educational Data Survey, Class Size Survey File

**IOWA PUBLIC SCHOOL DISTRICT  
AVERAGE CLASS SIZE (AVGCS) FOR KINDERGARTEN  
THROUGH THIRD GRADE  
2006-2007 AND 2007-2008 SCHOOL YEARS**

District Number	District Name	Grade	2006-2007 AVGCS	2007-2008 AVGCS	Percent Change
7029	WILLIAMSBURG	K	18.5	15.6	-16.0
		1	18.0	18.3	1.7
		2	17.3	18.0	4.0
		3	18.0	16.8	-6.7
7038	WILTON	K	18.0	19.0	5.6
		1	19.3	22.5	16.6
		2	22.3	25.0	12.1
		3	18.3	22.7	24.0
7047	WINFIELD-MT UNION	K	15.5	13.0	-16.0
		1	16.0	15.5	-3.1
		2	14.5	16.0	10.3
		3	13.0	16.5	26.9
7056	WINTERSET	K	20.2	21.7	7.4
		1	21.7	20.7	-4.6
		2	21.8	22.5	3.2
		3	23.5	22.2	-5.5
7083	WODEN-CRYSTAL LAKE	K	10.0	8.0	-20.0
		1	NA	10.0	NA
		2	NA	NA	NA
		3	10.0	NA	NA
7092	WOODBINE	K	17.5	16.5	-5.7
		1	14.5	13.0	-10.0
		2	13.0	15.5	19.2
		3	21.0	13.5	-36.0
7098	WOODBURY CENTRAL	K	23.7	17.7	-25.0
		1	13.0	16.3	25.4
		2	15.0	21.5	43.3
		3	21.5	16.3	-24.0
7110	WOODWARD-GRANGER	K	19.7	16.0	-19.0
		1	18.0	16.7	-7.2
		2	17.7	20.0	13.0
		3	25.0	18.7	-25.0

Source: Iowa Department of Education, Bureau of Planning, Research, Development and Evaluation, Basic Educational Data Survey, Class Size Survey File

# Appendix D

## IOWA PUBLIC SCHOOL DISTRICTS' FY 07 EARLY INTERVENTION BLOCK GRANT PROGRAM EXPENDITURE BY OBJECT

Dist#	Name	Salary	Benefits	Purchased Services	Supplies	Other	Total Expenditures
0009	AGWSR Comm School District	29,628.49	9,669.88	0.00	522.73	0.00	39,821.10
0018	Adair-Casey Comm School District	14,507.51	4,785.75	0.00	6.78	0.00	19,300.04
0027	Adel-DeSoto-Minburn Comm School District	81,067.05	0.00	0.00	0.00	0.00	81,067.05
0063	Akron Westfield Comm School District	31,117.82	4,169.78	0.00	0.00	0.00	35,287.60
0072	Albert City-Truesdale Comm School District	7,666.80	1,016.35	0.00	0.00	0.00	8,683.15
0081	Albia Comm School District	57,374.51	12,134.89	0.00	0.00	0.00	69,509.40
0099	Alburnett Comm School District	29,096.02	13,218.31	0.00	0.00	0.00	42,314.33
0108	Alden Comm School District	11,225.00	1,671.63	0.00	0.00	0.00	12,896.63
0126	Algona Comm School District	58,229.50	14,775.34	0.00	0.00	0.00	73,004.84
0135	Allamakee Comm School District	52,837.39	27,482.03	0.00	0.00	0.00	80,319.42
0153	Allison-Bristow Comm School District	15,930.22	0.00	0.00	0.00	0.00	15,930.22
0171	Alta Comm School District	21,979.68	374.41	0.00	0.00	0.00	22,354.09
0225	Ames Comm School District	153,993.00	73,498.09	0.00	0.00	0.00	227,491.09
0234	Anamosa Comm School District	63,284.00	8,366.01	0.00	0.00	0.00	71,650.01
0243	Andrew Comm School District	15,632.26	2,103.52	0.00	0.00	0.00	17,735.78
0252	Anita Comm School District	6,743.75	882.82	35.10	525.84	0.00	8,187.51
0261	Ankeny Comm School District	327,677.15	34,445.19	0.00	2,345.17	0.00	364,467.51
0270	Anthon-Oto Comm School District	12,495.31	1,674.37	0.00	0.00	0.00	14,169.68
0279	Aplington-Parkersburg Comm School District	39,749.20	10,951.39	0.00	118.30	0.00	50,818.89
0333	Armstrong-Ringsted Comm School District	18,784.72	2,517.15	0.00	0.00	0.00	21,301.87
0355	Ar-We-Va Comm School District	19,755.28	2,541.75	0.00	0.00	0.00	22,297.03
0387	Atlantic Comm School District	71,248.88	21,299.60	0.00	0.00	0.00	92,548.48
0414	Audubon Comm School District	18,326.25	2,455.73	250.00	294.94	0.00	21,326.92
0423	Aurelia Comm School District	15,395.64	2,063.02	0.00	0.00	0.00	17,458.66
0441	A-H-S-T Comm School District	29,834.33	9,667.54	0.00	0.00	0.00	39,501.87
0472	Ballard Comm School District	72,467.94	10,731.50	0.00	0.00	0.00	83,199.44
0504	Battle Creek-Ida Grove Comm School District	24,202.89	12,635.66	0.00	0.00	0.00	36,838.55
0513	Baxter Comm School District	19,683.46	1,849.83	0.00	0.00	371.75	21,905.04
0540	BCLUW Comm School District	26,148.48	8,675.69	0.00	0.00	0.00	34,824.17
0549	Bedford Comm School District	27,128.51	4,962.47	0.00	0.00	0.00	32,090.98
0576	Belle Plaine Comm School District	27,681.50	9,660.07	0.00	0.00	0.00	37,341.57
0585	Bellevue Comm School District	30,566.77	4,095.95	0.00	0.00	0.00	34,662.72
0594	Belmond-Klemme Comm School District	40,764.11	5,081.27	0.00	0.00	0.00	45,845.38
0603	Bennett Comm School District	288.00	38.56	0.00	0.00	0.00	326.56
0609	Benton Comm School District	54,520.94	7,712.41	5,858.85	2,788.12	0.00	70,880.32
0621	Bettendorf Comm School District	183,347.17	24,564.81	0.00	0.00	0.00	207,911.98
0657	Eddyville-Blakesburg Comm School District	32,476.47	11,979.41	0.00	0.00	0.00	44,455.88
0720	Bondurant-Farrar Comm School District	12,712.61	4,029.77	0.00	0.00	0.00	16,742.38
0729	Boone Comm School District	107,649.79	14,425.07	0.00	0.00	0.00	122,074.86
0747	Boyden-Hull Comm School District	37,080.23	3,510.73	0.00	0.00	0.00	40,590.96
0819	West Hancock Comm School District	29,994.81	14,129.91	180.00	1,145.52	0.00	45,450.24
0846	Brooklyn-Guernsey-Malcom Comm School District	27,560.00	6,362.19	0.00	0.00	0.00	33,922.19
0873	North Iowa Comm School District	35,761.02	9,343.77	0.00	130.70	0.00	45,235.49
0882	Burlington Comm School District	229,112.84	81,925.61	0.00	625.32	0.00	311,663.77
0914	C and M Comm School District	11,181.53	1,437.20	0.00	0.00	0.00	12,618.73
0916	CAL Comm School District	24,414.83	12,631.24	0.00	112.24	0.00	37,158.31

0918	Calamus-Wheatland Comm School District	23,098.14	8,220.61	0.00	0.00	0.00	31,318.75
0936	Camanche Comm School District	39,800.29	28,649.00	0.00	0.00	0.00	68,449.29
0977	Cardinal Comm School District	27,523.56	9,780.67	0.00	0.00	0.00	37,304.23
0981	Carlisle Comm School District	98,642.17	0.00	0.00	0.00	0.00	98,642.17
0999	Carroll Comm School District	72,254.91	29,348.62	0.00	0.00	0.00	101,603.53
1044	Cedar Falls Comm School District	176,989.62	53,276.75	0.00	0.00	0.00	230,266.37
1053	Cedar Rapids Comm School District	785,806.73	283,669.79	0.00	0.00	0.00	1,069,476.52
1062	Center Point-Urbana Comm School District	60,178.40	7,600.04	0.00	0.00	0.00	67,778.44
1071	Centerville Comm School District	73,670.65	26,304.19	0.00	0.00	0.00	99,974.84
1079	Central Lee Comm School District	48,574.44	13,374.80	0.00	202.85	0.00	62,152.09
1080	Central Comm School District	24,669.24	4,409.76	0.00	419.31	0.00	29,498.31
1082	Central Clinton Comm School District	62,434.61	12,888.94	0.00	0.00	0.00	75,323.55
1089	Central City Comm School District	22,011.43	5,636.33	0.00	0.00	0.00	27,647.76
1093	Central Decatur Comm School District	34,960.20	18,151.61	0.00	0.00	0.00	53,111.81
1095	Central Lyon Comm School District	30,149.84	5,902.37	0.00	0.00	0.00	36,052.21
1107	Chariton Comm School District	139,644.18	27,038.34	0.00	0.00	0.00	166,682.52
1116	Charles City Comm School District	80,173.76	23,079.36	0.00	0.00	0.00	103,253.12
1134	Charter Oak-Ute Comm School District	19,611.19	0.00	0.00	0.00	0.00	19,611.19
1152	Cherokee Comm School District	43,490.27	25,803.20	0.00	191.07	0.00	69,484.54
1197	Clarinda Comm School District	46,772.91	14,706.70	0.00	131.40	0.00	61,611.01
1206	Clarion-Goldfield Comm School District	47,680.79	17,247.98	0.00	0.00	0.00	64,928.77
1211	Clarke Comm School District	141,654.18	47,781.66	0.00	1,664.03	0.00	191,099.87
1215	Clarksville Comm School District	12,238.20	7,072.60	0.00	0.00	0.00	19,310.80
1218	Clay Central-Everly Comm School District	20,930.82	0.00	0.00	0.00	0.00	20,930.82
1221	Clear Creek Amana Comm School District	61,218.00	8,202.97	0.00	0.00	0.00	69,420.97
1224	Clearfield Comm School District	911.42	122.14	0.00	0.00	0.00	1,033.56
1233	Clear Lake Comm School District	70,172.67	10,798.86	0.00	0.00	0.00	80,971.53
1278	Clinton Comm School District	206,713.00	76,549.13	0.00	0.00	0.00	283,262.13
1332	Colfax-Mingo Comm School District	10,450.72	190.75	0.00	0.00	0.00	10,641.47
1337	College Comm School District	197,699.71	35,844.87	0.00	0.00	0.00	233,544.58
1350	Collins-Maxwell Comm School District	33,800.54	4,574.03	0.00	547.31	0.00	38,921.88
1359	Colo-Nesco Comm School District	19,030.65	10,699.08	186.22	0.00	0.00	29,915.95
1368	Columbus Comm School District	50,607.08	17,087.96	0.00	0.00	0.00	67,695.04
1413	Coon Rapids-Bayard Comm School District	18,632.19	2,637.49	0.00	1,303.30	0.00	22,572.98
1431	Corning Comm School District	21,927.30	7,168.93	0.00	0.00	0.00	29,096.23
1449	Corwith-Wesley Comm School District	9,743.77	1,647.70	0.00	0.00	0.00	11,391.47
1476	Council Bluffs Comm School District	494,957.21	177,961.82	0.00	0.00	0.00	672,919.03
1503	Creston Comm School District	99,014.87	14,420.41	121.54	1,897.16	0.00	115,453.98
1576	Dallas Center-Grimes Comm School District	68,735.56	27,064.05	0.00	0.00	0.00	95,799.61
1602	Danville Comm School District	30,979.87	4,793.66	0.00	0.00	0.00	35,773.53
1611	Davenport Comm School District	930,551.00	273,911.64	0.00	0.00	0.00	1,204,462.64
1619	Davis County Comm School District	66,883.13	19,085.11	0.00	0.00	0.00	85,968.24
1638	Decorah Community School District	64,378.80	21,105.00	0.00	0.00	0.00	85,483.80
1647	Deep River-Millersburg Comm School District	8,555.20	1,146.39	0.00	0.00	0.00	9,701.59
1675	Delwood Comm School District	6,337.20	4,892.83	0.00	0.00	0.00	11,230.03
1701	Denison Comm School District	99,676.66	31,712.98	0.00	0.00	0.00	131,389.64
1719	Denver Comm School District	32,580.84	0.00	0.00	0.00	0.00	32,580.84
1737	Des Moines Independent Comm School District	1,788,279.16	567,864.92	1,437.10	0.00	0.00	2,357,581.18
1782	Diagonal Comm School District	7,676.94	1,028.71	0.00	0.00	0.00	8,705.65
1791	Dike-New Hartford Comm School District	40,753.99	0.00	0.00	0.00	0.00	40,753.99
1854	Dows Comm School District	9,684.19	1,498.47	0.00	0.00	0.00	11,182.66
1863	Dubuque Comm School District	461,903.05	172,583.97	281.26	0.00	0.00	634,768.28
1908	Dunkerton Comm School District	20,548.22	10,038.39	0.00	0.00	0.00	30,586.61
1917	Boyer Valley Comm School District	25,775.00	3,468.70	0.00	0.00	0.00	29,243.70

1926	Durant Comm School District	22,864.81	8,156.90	0.00	0.00	0.00	31,021.71
1944	Eagle Grove Comm School District	31,817.23	24,539.36	0.00	0.00	0.00	56,356.59
1953	Earlham Comm School District	31,307.80	0.00	0.00	0.00	0.00	31,307.80
1963	East Buchanan Comm School District	27,412.75	3,591.50	0.00	0.00	0.00	31,004.25
1965	East Central Comm School District	18,866.00	2,529.04	0.00	0.00	0.00	21,395.04
1967	East Greene Comm School District	23,686.00	4,630.06	0.00	0.00	0.00	28,316.06
1968	East Marshall Comm School District	39,245.25	5,258.00	0.00	0.00	0.00	44,503.25
1970	East Union Comm School District	23,805.53	7,312.81	0.00	0.00	0.00	31,118.34
1972	Eastern Allamakee Comm School District	23,339.54	0.00	0.00	0.00	0.00	23,339.54
1975	River Valley Comm School District	20,922.16	8,738.38	0.00	0.00	0.00	29,660.54
1989	Edgewood-Colesburg Comm School District	29,047.58	9,920.21	0.00	0.00	0.00	38,967.79
2007	Eldora-New Providence Comm School District	38,059.79	5,098.19	0.00	0.00	0.00	43,157.98
2016	Elk Horn-Kimballton Comm School District	13,800.20	0.00	0.00	0.00	0.00	13,800.20
2088	Emmetsburg Comm School District	33,455.00	8,870.07	0.00	0.00	0.00	42,325.07
2097	English Valleys Comm School District	26,766.69	0.00	0.00	0.00	0.00	26,766.69
2113	Essex Comm School District	12,239.31	5,219.35	0.00	0.00	0.00	17,458.66
2124	Estherville Lincoln Central Com Sch Dist	64,758.77	24,498.42	0.00	0.00	0.00	89,257.19
2151	Exira Comm School District	15,455.06	614.11	0.00	0.00	0.00	16,069.17
2169	Fairfield Comm School District	85,716.13	31,164.73	0.00	0.00	0.00	116,880.86
2205	Farragut Comm School District	10,983.81	3,279.02	0.00	0.00	0.00	14,262.83
2295	Forest City Comm School District	69,984.30	9,482.87	0.00	0.00	0.00	79,467.17
2313	Fort Dodge Comm School District	227,007.18	67,855.74	0.00	0.00	0.00	294,862.92
2322	Fort Madison Comm School District	134,196.50	16,278.92	0.00	0.00	0.00	150,475.42
2349	Fredericksburg Comm School District	13,239.70	5,043.73	0.00	0.00	0.00	18,283.43
2367	Fremont Comm School District	7,391.06	851.67	0.00	5,070.74	0.00	13,313.47
2369	Fremont-Mills Comm School District	27,112.88	0.00	0.00	0.00	0.00	27,112.88
2376	Galva-Holstein Comm School District	28,095.63	3,764.81	0.00	0.00	0.00	31,860.44
2403	Garner-Hayfield Comm School District	38,371.00	11,734.07	0.00	0.00	0.00	50,105.07
2457	George-Little Rock Comm School District	26,901.57	3,823.99	0.00	0.00	0.00	30,725.56
2466	Gilbert Comm School District	39,682.83	10,749.86	370.00	766.83	0.00	51,569.52
2493	Gilmore City-Bradgate Comm School District	0.00	0.00	134.40	5,708.57	0.00	5,842.97
2502	Gladbrook-Reinbeck Comm School District	29,584.66	8,117.93	0.00	0.00	0.00	37,702.59
2511	Glenwood Comm School District	84,572.43	33,862.52	0.00	0.00	0.00	118,434.95
2520	Glidden-Ralston Comm School District	13,363.73	5,808.12	0.00	0.00	0.00	19,171.85
2556	Graettinger Comm School District	35,299.99	3,102.80	0.00	0.00	41.13	38,443.92
2664	Greene Comm School District	14,700.00	1,971.55	0.00	0.00	0.00	16,671.55
2673	Nodaway Valley Comm School District	30,457.21	11,304.91	0.00	748.47	0.00	42,510.59
2682	GMG Comm School District	18,654.69	8,250.16	0.00	0.00	0.00	26,904.85
2709	Grinnell-Newburg Comm School District	89,188.14	11,951.17	0.00	0.00	0.00	101,139.31
2718	Griswold Comm School District	29,868.32	8,345.85	0.00	0.00	0.00	38,214.17
2727	Grundy Center Comm School District	34,500.48	0.00	0.00	0.00	0.00	34,500.48
2754	Guthrie Center Comm School District	15,678.50	5,976.13	0.00	28.50	0.00	21,683.13
2763	Clayton Ridge Comm School District	31,974.13	4,284.54	0.00	0.00	0.00	36,258.67
2766	H-L-V Comm School District	17,412.88	0.00	0.00	0.00	0.00	17,412.88
2772	Hamburg Comm School District	12,737.73	8,307.96	0.00	0.00	0.00	21,045.69
2781	Hampton-Dumont Comm School District	49,565.03	25,871.82	0.00	0.00	0.00	75,436.85
2826	Harlan Comm School District	67,017.35	18,287.54	0.00	0.00	0.00	85,304.89
2834	Harmony Comm School District	23,594.15	0.00	0.00	0.00	0.00	23,594.15
2846	Harris-Lake Park Comm School District	13,623.22	3,719.78	0.00	0.00	0.00	17,343.00
2862	Hartley-Melvin-Sanborn Comm School District	30,064.41	8,510.60	0.00	386.31	0.00	38,961.32
2977	Highland Comm School District	29,847.23	5,906.51	450.00	589.80	0.00	36,793.54
2988	Hinton Comm School District	32,857.96	0.00	0.00	0.00	0.00	32,857.96
3029	Howard-Winneshiek Comm School District	52,138.37	21,029.50	0.00	0.00	0.00	73,167.87
3033	Hubbard-Radcliffe Comm School District	18,837.90	5,257.11	750.00	0.00	0.00	24,845.01



3042	Hudson Comm School District	33,545.00	4,499.09	0.00	0.00	0.00	38,044.09
3060	Humboldt Comm School District	47,786.00	12,417.17	0.00	0.00	0.00	60,203.17
3105	Independence Comm School District	42,585.70	35,977.90	0.00	0.00	0.00	78,563.60
3114	Indianola Comm School District	149,703.47	33,061.06	0.00	0.00	0.00	182,764.53
3119	Interstate 35 Comm School District	49,597.80	0.00	0.00	0.00	0.00	49,597.80
3141	Iowa City Comm School District	483,043.31	127,388.52	0.00	609.39	0.00	611,041.22
3150	Iowa Falls Comm School District	51,417.79	21,587.84	0.00	0.00	0.00	73,005.63
3154	Iowa Valley Comm School District	24,200.00	8,100.58	0.00	0.00	0.00	32,300.58
3168	IKM Comm School District	17,497.35	5,263.89	0.00	0.00	0.00	22,761.24
3186	Janesville Consolidated School District	13,152.81	0.00	0.00	0.00	0.00	13,152.81
3195	Jefferson-Scranton Comm School District	55,710.80	12,154.50	0.00	0.00	0.00	67,865.30
3204	Jesup Comm School District	36,207.37	12,001.73	0.00	0.00	0.00	48,209.10
3231	Johnston Comm School District	180,452.35	36,443.88	0.00	7,299.43	5,878.00	230,073.66
3312	Keokuk Comm School District	95,381.11	53,236.67	0.00	0.00	0.00	148,617.78
3330	Keota Comm School District	13,788.50	1,540.92	0.00	0.00	0.00	15,329.42
3348	Kingsley-Pierson Comm School District	21,908.21	7,788.03	229.01	1,084.16	1,500.00	32,509.41
3375	Knoxville Comm School District	67,712.04	45,466.13	0.00	0.00	0.00	113,178.17
3420	Lake Mills Comm School District	33,204.43	0.00	0.00	0.00	0.00	33,204.43
3465	Lamoni Comm School District	17,123.31	5,219.88	0.00	0.00	0.00	22,343.19
3537	Laurens-Marathon Comm School District	13,145.47	6,280.20	0.00	0.00	0.00	19,425.67
3555	Lawton-Bronson Comm School District	25,320.60	3,392.95	0.00	0.00	0.00	28,713.55
3600	Le Mars Comm School District	73,888.31	53,835.32	0.00	0.00	0.00	127,723.63
3609	Lenox Comm School District	19,733.08	4,254.63	0.00	0.00	0.00	23,987.71
3645	Lewis Central Comm School District	105,964.94	29,704.71	0.00	0.00	0.00	135,669.65
3691	North Cedar Comm School District	41,425.97	5,694.82	0.00	0.00	0.00	47,120.79
3705	Lineville-Clio Comm School District	5,213.37	1,562.31	0.00	0.00	0.00	6,775.68
3715	Linn-Mar Comm School District	254,333.94	37,644.70	0.00	0.00	0.00	291,978.64
3744	Lisbon Comm School District	24,361.13	7,153.92	0.00	0.00	0.00	31,515.05
3798	Logan-Magnolia Comm School District	34,069.32	4,667.50	0.00	23.73	0.00	38,760.55
3816	Lone Tree Comm School District	23,401.53	1,930.66	0.00	0.00	0.00	25,332.19
3841	Louisa-Muscatine Comm School District	57,956.67	9,895.38	0.00	0.00	0.00	67,852.05
3897	LuVerne Comm School District	0.00	0.00	0.00	0.00	0.00	0.00
3906	Lynnville-Sully Comm School District	16,641.97	4,569.12	0.00	0.00	0.00	21,211.09
3942	Madrid Comm School District	29,711.48	6,504.07	0.00	0.00	0.00	36,215.55
3978	Malvern Comm School District	23,226.40	5,804.51	0.00	0.00	0.00	29,030.91
4014	Manning Comm School District	70,418.00	2,260.49	0.00	0.00	0.00	72,678.49
4023	Manson Northwest Webster Comm School District	22,300.52	6,041.98	0.00	0.00	0.00	28,342.50
4033	Maple Valley Comm School District	21,806.22	2,922.03	0.00	0.00	0.00	24,728.25
4041	Maquoketa Comm School District	60,335.22	32,276.88	0.00	0.00	0.00	92,612.10
4043	Maquoketa Valley Comm School District	37,282.00	6,619.67	0.00	0.00	0.00	43,901.67
4068	Marcus-Meriden-Cleghorn Comm School District	18,257.75	6,031.93	0.00	0.00	0.00	24,289.68
4086	Marion Independent School District	110,187.64	12,649.47	0.00	0.00	0.00	122,837.11
4104	Marshalltown Comm School District	318,692.62	70,663.59	0.00	0.00	0.00	389,356.21
4122	Martensdale-St Marys Comm School District	17,709.15	5,608.67	0.00	0.00	0.00	23,317.82
4131	Mason City Comm School District	172,995.01	79,734.03	0.00	0.00	0.00	252,729.04
4149	MOC-Floyd Valley Comm School District	52,755.23	13,932.54	0.00	0.00	0.00	66,687.77
4203	Mediapolis Comm School District	33,461.73	15,487.59	0.00	166.26	0.00	49,115.58
4212	Melcher-Dallas Comm School District	9,612.17	11,527.47	0.00	0.00	0.00	21,139.64
4266	Meservey-Thornton Comm School District	0.00	0.00	0.00	0.00	0.00	0.00
4269	Midland Comm School District	30,053.39	4,058.43	0.00	0.00	0.00	34,111.82
4271	Mid-Prairie Comm School District	57,314.59	14,380.42	0.00	0.30	0.00	71,695.31
4356	Missouri Valley Comm School District	36,104.42	11,732.83	0.00	0.00	0.00	47,837.25
4419	MFL MarMac Comm School District	45,736.30	11,685.30	0.00	0.00	0.00	57,421.60

4437	Montezuma Comm School District	19,965.34	6,999.36	792.00	1,116.74	0.00	28,873.44
4446	Monticello Comm School District	31,106.66	10,518.25	0.00	14,241.77	0.00	55,866.68
4491	Moravia Comm School District	13,594.39	8,632.77	0.00	0.00	0.00	22,227.16
4505	Mormon Trail Comm School District	16,230.00	2,176.45	0.00	0.00	0.00	18,406.45
4509	Morning Sun Comm School District	14,094.79	3,432.96	0.00	0.00	0.00	17,527.75
4518	Moulton-Udell Comm School District	13,600.34	1,805.55	0.00	0.00	0.00	15,405.89
4527	Mount Ayr Comm School District	35,567.21	4,767.57	0.00	0.00	0.00	40,334.78
4536	Mount Pleasant Comm School District	107,973.98	23,498.13	0.00	0.00	0.00	131,472.11
4554	Mount Vernon Comm School District	45,454.01	11,973.89	0.00	0.00	0.00	57,427.90
4572	Murray Comm School District	16,119.37	5,320.67	0.00	0.00	0.00	21,440.04
4581	Muscatine Comm School District	259,483.00	86,910.12	0.00	0.00	0.00	346,393.12
4599	Nashua-Plainfield Comm School District	27,870.75	9,060.95	0.00	0.00	0.00	36,931.70
4617	Nevada Comm School District	77,888.06	14,302.61	0.00	0.00	0.00	92,190.67
4644	Newell-Fonda Comm School District	23,852.53	3,238.64	0.00	0.00	0.00	27,091.17
4662	New Hampton Comm School District	40,763.46	6,032.85	0.00	0.00	0.00	46,796.31
4689	New London Comm School District	33,927.80	1,356.30	0.00	24.43	0.00	35,308.53
4698	New Market Comm School District	10,637.56	4,982.59	0.00	0.00	0.00	15,620.15
4725	Newton Comm School District	152,320.58	46,631.00	0.00	139.09	108.57	199,199.24
4751	Nishna Valley Comm School District	0.00	0.00	0.00	7,849.71	0.00	7,849.71
4761	Nora Springs-Rock Falls Comm School District	19,238.50	3,203.91	0.00	17.65	0.00	22,460.06
4772	North Central Comm School District	25,312.68	3,121.40	0.00	0.00	0.00	28,434.08
4773	Northeast Comm School District	32,404.30	8,046.93	0.00	0.00	0.00	40,451.23
4774	North Fayette Comm School District	52,586.96	7,140.85	0.00	0.00	0.00	59,727.81
4775	Northeast Hamilton Comm School District	5,176.92	7,789.46	327.93	1,802.22	0.00	15,096.53
4776	North Mahaska Comm School District	30,842.80	0.00	0.00	0.00	0.00	30,842.80
4777	North Linn Comm School District	32,767.79	4,326.94	0.00	0.00	0.00	37,094.73
4778	North Kossuth Comm School District	12,362.66	5,789.97	0.00	0.00	0.00	18,152.63
4779	North Polk Comm School District	44,435.35	5,954.29	0.00	0.00	0.00	50,389.64
4784	North Scott Comm School District	99,572.87	37,189.54	0.00	0.00	0.00	136,762.41
4785	North Tama County Comm School District	29,257.88	3,898.77	0.00	0.00	0.00	33,156.65
4787	North Winneshiek Comm School District	7,839.97	9,850.02	0.00	0.00	0.00	17,689.99
4788	Northwood-Kensett Comm School District	23,200.98	3,589.00	0.00	0.00	0.00	26,789.98
4797	Norwalk Comm School District	105,733.84	14,168.34	0.00	0.00	0.00	119,902.18
4860	Odebolt-Arthur Comm School District	15,578.40	2,087.51	0.00	0.00	0.00	17,665.91
4869	Oelwein Comm School District	64,732.55	17,739.41	0.00	0.00	0.00	82,471.96
4878	Ogden Comm School District	34,749.74	5,377.00	0.00	0.00	0.00	40,126.74
4890	Okoboji Comm School District	37,768.53	13,634.82	0.00	0.00	0.00	51,403.35
4905	Olin Consolidated School District	11,862.81	1,589.61	0.00	0.00	0.00	13,452.42
4978	Orient-Macksburg Comm School District	0.00	0.00	0.00	1,874.38	0.00	1,874.38
4995	Osage Comm School District	36,821.43	12,402.53	0.00	0.00	0.00	49,223.96
5013	Oskaloosa Comm School District	179,789.88	23,942.29	0.00	0.00	0.00	203,732.17
5049	Ottumwa Comm School District	307,651.47	40,490.53	0.00	0.00	0.00	348,142.00
5121	Panorama Comm School District	24,416.61	22,194.17	0.00	0.00	0.00	46,610.78
5139	Paton-Churdan Comm School District	11,021.21	0.00	0.00	0.00	0.00	11,021.21
5160	PCM Comm School District	28,522.18	6,645.17	0.00	0.00	0.00	35,167.35
5163	Pekin Comm School District	37,829.00	7,403.42	0.00	513.75	0.00	45,746.17
5166	Pella Comm School District	79,453.79	34,728.98	0.00	0.00	0.00	114,182.77
5184	Perry Comm School District	113,480.49	26,778.62	0.00	0.00	0.00	140,259.11
5250	Pleasant Valley Comm School District	117,336.39	37,536.00	0.00	0.00	0.00	154,872.39
5256	Pleasantville Comm School District	32,901.27	8,267.20	0.00	0.00	0.00	41,168.47
5283	Pocahontas Area Comm School District	21,716.88	2,965.57	0.00	0.00	0.00	24,682.45
5301	Pomeroy-Palmer Comm School District	18,985.18	2,544.01	0.00	910.06	0.00	22,439.25
5310	Postville Comm School District	35,095.48	12,969.16	0.00	0.00	0.00	48,064.64
5325	Prairie Valley Comm School District	25,779.33	14,969.67	0.00	72.49	0.00	40,821.49

5328	Prescott Comm School District	4,028.74	0.00	0.00	0.00	0.00	4,028.74
5337	Preston Comm School District	15,471.90	5,066.94	0.00	0.00	0.00	20,538.84
5463	Red Oak Comm School District	74,087.60	13,083.76	0.00	0.00	0.00	87,171.36
5486	Remsen-Union Comm School District	20,071.64	2,689.60	0.00	0.00	0.00	22,761.24
5508	Riceville Comm School District	16,421.30	4,417.94	0.00	0.00	0.00	20,839.24
5510	Riverside Comm School District	35,147.87	0.00	0.00	0.00	0.00	35,147.87
5607	Rock Valley Comm School District	32,564.93	9,692.64	0.00	0.00	0.00	42,257.57
5616	Rockwell-Swaledale Comm School District	17,204.05	0.00	0.00	0.00	0.00	17,204.05
5625	Rockwell City-Lytton Comm School District	24,878.74	5,107.07	0.00	0.00	0.00	29,985.81
5643	Roland-Story Comm School District	42,595.97	5,707.86	0.00	0.00	0.00	48,303.83
5697	Rudd-Rockford-Marble Rk Comm School District	32,346.38	0.00	0.00	0.00	0.00	32,346.38
5715	Russell Comm School District	5,795.76	3,048.84	0.00	0.00	0.00	8,844.60
5724	Ruthven-Ayrshire Comm School District	2,860.47	383.31	0.00	13,658.31	0.00	16,902.09
5742	Sac Comm School District	89,245.12	3,743.35	0.00	8,346.75	0.00	101,335.22
5751	St Ansgar Comm School District	23,725.38	10,081.93	0.00	0.00	0.00	33,807.31
5805	Saydel Comm School District	81,666.53	13,213.11	0.00	0.00	0.00	94,879.64
5823	Schaller-Crestland Comm School District	19,173.72	8,749.57	0.00	0.00	0.00	27,923.29
5832	Schleswig Comm School District	15,926.16	2,134.10	0.00	0.00	0.00	18,060.26
5868	Sentral Comm School District	14,262.05	0.00	0.00	0.00	0.00	14,262.05
5877	Sergeant Bluff-Luton Comm School District	67,707.24	20,861.50	0.00	0.00	0.00	88,568.74
5895	Seymour Comm School District	14,292.17	11,002.11	0.00	0.00	0.00	25,294.28
5922	Sheffield Chapin Meservey Thornton CSD	24,498.50	0.00	0.00	0.00	0.00	24,498.50
5949	Sheldon Comm School District	46,839.98	6,276.55	0.00	0.00	0.00	53,116.53
5976	Shenandoah Comm School District	51,832.00	22,260.36	0.00	0.00	0.00	74,092.36
5994	Sibley-Ocheyedan Comm School District	55,050.00	6,998.43	0.00	0.00	0.00	62,048.43
6003	Sidney Comm School District	27,783.56	0.00	0.00	0.00	0.00	27,783.56
6012	Sigourney Comm School District	28,134.83	9,276.01	1,971.00	95.95	0.00	39,477.79
6030	Sioux Center Comm School District	59,415.05	0.00	0.00	0.00	0.00	59,415.05
6035	Sioux Central Comm School District	37,566.76	5,033.95	0.00	0.00	0.00	42,600.71
6039	Sioux City Comm School District	747,694.99	284,797.28	0.00	0.00	0.00	1,032,492.27
6091	Southern Cal Comm School District	14,813.57	12,670.37	0.00	0.00	0.00	27,483.94
6092	South Clay Comm School District	4,011.24	1,118.38	0.00	1,608.24	0.00	6,737.86
6093	Solon Comm School District	48,426.68	13,265.18	0.00	0.00	0.00	61,691.86
6094	Southeast Warren Comm School District	20,190.03	5,198.46	0.00	316.83	0.00	25,705.32
6095	South Hamilton Comm School District	35,176.72	4,464.10	0.00	0.00	0.00	39,640.82
6096	Southeast Webster Grand Comm School District	33,057.00	2,583.00	555.00	410.65	0.00	36,605.65
6097	South Page Comm School District	13,454.75	2,081.91	0.00	0.00	0.00	15,536.66
6098	South Tama County Comm School District	118,722.63	46,200.72	0.00	10.07	0.00	164,933.42
6099	South O'Brien Comm School District	23,643.29	9,879.85	85.99	0.00	0.00	33,609.13
6100	South Winneshiek Comm School District	14,586.95	11,114.72	0.00	0.00	0.00	25,701.67
6101	Southeast Polk Comm School District	242,426.53	56,948.76	0.00	0.00	0.00	299,375.29
6102	Spencer Comm School District	91,554.87	20,917.40	52.99	1,067.40	0.00	113,592.66
6120	Spirit Lake Comm School District	62,573.74	7,704.21	0.00	0.00	0.00	70,277.95
6138	Springville Comm School District	17,869.89	2,438.42	0.00	0.00	0.00	20,308.31
6165	Stanton Comm School District	8,984.19	4,584.69	0.00	0.00	0.00	13,568.88
6175	Starmont Comm School District	44,430.00	72.47	0.00	0.00	0.00	44,502.47
6219	Storm Lake Comm School District	120,119.05	32,248.77	0.00	0.00	0.00	152,367.82
6246	Stratford Comm School District	11,500.57	3,301.66	0.00	0.00	0.00	14,802.23
6264	West Central Valley Comm School District	22,750.00	5,769.67	0.00	0.00	0.00	28,519.67
6273	Sumner Comm School District	25,462.24	3,411.98	0.00	0.00	0.00	28,874.22
6345	Terril Comm School District	6,684.83	2,138.77	196.48	449.39	0.00	9,469.47
6408	Tipton Comm School District	33,993.00	9,748.01	0.00	0.00	0.00	43,741.01
6417	Titonka Consolidated School District	7,227.97	2,053.59	58.84	778.03	0.00	10,118.43
6453	Treynor Comm School District	28,671.06	4,851.13	0.00	0.00	0.00	33,522.19

6460	Tri-Center Comm School District	35,473.36	10,239.18	0.00	0.00	0.00	45,712.54
6462	Tri-County Comm School District	11,610.41	12,971.71	0.00	0.00	0.00	24,582.12
6471	Tripoli Comm School District	29,773.20	7,837.07	0.00	0.00	0.00	37,610.27
6509	Turkey Valley Comm School District	19,592.04	1,594.97	0.00	0.00	0.00	21,187.01
6512	Twin Cedars Comm School District	17,466.12	8,373.72	0.00	0.00	0.00	25,839.84
6516	Twin Rivers Comm School District	31,835.28	4,281.73	0.00	0.00	0.00	36,117.01
6534	Underwood Comm School District	36,702.75	0.00	0.00	0.00	0.00	36,702.75
6536	Union Comm School District	52,539.23	16,740.42	0.00	0.00	0.00	69,279.65
6561	United Comm School District	14,503.36	2,955.30	0.00	0.00	0.00	17,458.66
6579	Urbandale Comm School District	102,096.73	13,433.96	0.00	48,252.84	498.35	164,281.88
6591	Valley Comm School District	39,546.00	9,711.89	264.00	1,300.57	0.00	50,822.46
6592	Van Buren Comm School District	29,647.96	19,113.78	0.00	0.00	0.00	48,761.74
6615	Van Meter Comm School District	32,974.40	0.00	0.00	0.00	0.00	32,974.40
6633	Ventura Comm School District	16,000.00	0.00	0.00	880.37	0.00	16,880.37
6651	Villisca Comm School District	28,222.90	0.00	0.00	0.00	0.00	28,222.90
6660	Vinton-Shellsburg Comm School District	91,698.25	12,287.56	0.00	0.00	0.00	103,985.81
6700	Waco Comm School District	28,666.50	3,841.33	0.00	0.00	0.00	32,507.83
6741	Wall Lake View Auburn Comm School District	30,216.34	0.00	0.00	0.00	0.00	30,216.34
6750	Walnut Comm School District	14,802.83	1,983.59	0.00	0.00	0.00	16,786.42
6759	Wapello Comm School District	12,930.00	19,825.04	0.00	0.00	0.00	32,755.04
6762	Wapsie Valley Comm School District	28,813.05	3,860.95	0.00	0.00	0.00	32,674.00
6768	Washington Comm School District	86,098.99	23,419.03	0.00	0.00	0.00	109,518.02
6795	Waterloo Comm School District	596,683.55	158,431.25	219.70	0.00	0.00	755,334.50
6822	Waukee Comm School District	226,634.76	67,940.20	0.00	0.00	0.00	294,574.96
6840	Waverly-Shell Rock Comm School District	79,471.56	10,938.48	0.00	58.20	0.00	90,468.24
6854	Wayne Comm School District	17,652.12	15,388.21	0.00	0.00	0.00	33,040.33
6867	Webster City Comm School District	88,349.01	16,878.54	150.00	0.00	0.00	105,377.55
6921	West Bend-Mallard Comm School District	11,455.53	1,535.04	0.00	0.00	0.00	12,990.57
6930	West Branch Comm School District	31,016.45	11,684.79	0.00	0.00	0.00	42,701.24
6937	West Burlington Ind School District	39,556.08	8,486.84	0.00	0.00	0.00	48,042.92
6943	West Central Comm School District	13,593.00	4,235.93	0.00	0.00	0.00	17,828.93
6950	West Delaware County Comm School District	78,968.92	8,554.94	0.00	0.00	0.00	87,523.86
6957	West Des Moines Comm School District	342,329.08	99,633.01	950.19	83,679.08	0.00	526,591.36
6961	Western Dubuque Comm School District	124,857.70	41,135.01	0.00	0.00	0.00	165,992.71
6969	West Harrison Comm School District	21,129.63	5,867.59	0.00	0.00	0.00	26,997.22
6975	West Liberty Comm School District	58,930.07	20,255.26	0.00	0.00	0.00	79,185.33
6983	West Lyon Comm School District	18,262.77	21,865.56	0.00	0.00	0.00	40,128.33
6985	West Marshall Comm School District	38,831.20	0.00	0.00	0.00	0.00	38,831.20
6987	West Monona Comm School District	74,881.72	10,034.29	0.00	0.00	0.00	84,916.01
6990	West Sioux Comm School District	33,955.69	4,550.06	5,000.00	0.00	0.00	43,505.75
6992	Westwood Comm School District	30,000.40	8,920.81	0.00	0.00	0.00	38,921.21
7002	Whiting Comm School District	13,475.71	0.00	0.00	0.00	0.00	13,475.71
7029	Williamsburg Comm School District	45,676.28	5,925.54	0.00	590.22	0.00	52,192.04
7038	Wilton Comm School District	32,258.71	16,295.79	0.00	0.00	0.00	48,554.50
7047	Winfield-Mt Union Comm School District	25,978.79	0.00	0.00	0.00	0.00	25,978.79
7056	Winterset Comm School District	79,095.00	27,465.35	0.00	0.00	0.00	106,560.35
7083	Woden-Crystal Lake Comm School District	6,168.92	823.55	0.00	0.00	0.00	6,992.47
7092	Woodbine Comm School District	19,404.84	5,300.90	0.00	0.00	0.00	24,705.74
7098	Woodbury Central Comm School District	29,302.48	3,926.53	0.00	0.00	0.00	33,229.01
7110	Woodward-Granger Comm School District	33,406.89	4,476.53	0.00	0.00	0.00	37,883.42
STATE TOTAL		23,105,798.89	6,216,509.58	20,907.60	227,519.77	8,397.80	29,579,133.64
%		78.12%	21.02%	0.07%	0.77%	0.03%	100.00%

Source: FY 07 Certified Annual Report

# Appendix E

## IOWA PUBLIC SCHOOL DISTRICTS' EARLY INTERVENTION BLOCK GRANT PROGRAM ALLOCATIONS 2001-2002 THROUGH 2007-2008

Dist#	Name	FY 02	FY03	FY 04	FY05	FY06	FY07	FY08
0009	AGWSR	49,433	50,503	43,609	44,261	44,491	39,015	34,716
0018	ADAIR-CASEY	23,346	22,874	20,642	20,823	21,111	19,056	23,723
0027	ADEL-DESOTO-MINBURN	73,665	73,956	80,439	74,528	79,343	81,067	80,416
0063	AKRON WESTFIELD	35,751	36,878	34,502	31,121	35,582	35,288	32,154
0072	ALBERT CITY-TRUESDALE	15,134	19,606	15,547	13,377	10,869	8,683	9,414
0081	ALBIA	80,853	77,808	81,463	78,110	76,077	69,509	70,457
0099	ALBURNETT	26,240	28,416	29,505	29,999	28,886	29,616	29,388
0108	ALDEN	20,896	19,606	15,846	16,477	13,153	12,897	15,319
0126	ALGONA	70,621	68,990	69,959	66,402	70,978	73,005	63,959
0135	ALLAMAKEE	82,148	88,983	85,145	76,390	80,414	80,319	75,306
0153	ALLISON-BRISTOW	22,338	21,439	20,203	17,836	14,173	15,930	17,700
0171	ALTA	40,353	40,291	37,472	34,529	33,259	36,143	38,511
0225	AMES	241,460	238,080	237,258	242,491	229,971	227,476	234,044
0234	ANAMOSA	71,925	72,058	71,705	76,514	70,752	71,778	71,766
0243	ANDREW	17,297	19,428	15,283	16,673	15,603	17,736	21,429
0252	ANITA	17,581	19,784	15,249	15,354	15,215	15,305	12,388
0261	ANKENY	296,709	300,280	312,031	328,676	341,188	364,468	390,639
0270	ANTHON-OTO	17,872	17,061	21,328	16,631	16,458	14,170	13,461
0279	APLINGTON-PARKERSBURG	22,484	19,722	19,066	44,086	47,784	43,856	48,711
0333	ARMSTRONG-RINGSTED	24,502	25,105	23,248	22,347	21,379	21,302	22,073
0355	AR-WE-VA	27,094	24,006	20,366	22,079	19,757	22,297	18,871
0387	ATLANTIC	100,884	97,980	96,517	94,556	93,404	95,810	98,385
0414	AUDUBON	47,704	42,104	43,046	41,450	34,243	33,366	30,893
0423	AURELIA	15,711	12,589	13,381	14,407	18,342	17,459	16,077
0441	A-H-S-T	36,755	39,223	36,494	38,278	42,848	39,502	37,831
0472	BALLARD	77,550	72,835	71,636	70,575	73,308	83,199	83,100
0504	BATTLE CREEK-IDA GROVE	46,840	48,660	49,002	42,407	39,736	36,839	37,234
0513	BAXTER	22,344	20,382	18,088	22,440	21,752	21,905	21,966
0540	BCLUW	39,783	40,711	40,615	36,991	35,769	34,824	32,567
0549	BEDFORD	36,030	35,086	34,427	34,405	35,922	32,091	31,620
0576	BELLE PLAINE	46,121	39,245	32,763	33,376	29,539	28,758	29,361
0585	BELLEVUE	34,738	33,044	33,331	32,408	33,454	34,663	30,488
0594	BELMOND-KLEMME	46,700	41,172	35,819	37,475	42,908	45,845	46,342
0603	BENNETT	13,694	11,395	11,360	9,444	9,373	10,952	12,136
0609	BENTON	80,156	81,895	76,854	70,173	72,794	70,880	75,175
0621	BETTENDORF	218,824	233,167	225,700	225,077	216,373	207,912	226,579
0657	EDDYVILLE-BLAKESBURG	57,069	56,284	52,153	52,633	48,332	44,456	43,210
0720	BONDURANT-FARRAR	50,456	48,934	51,628	51,141	56,266	60,437	63,247
0729	BOONE	130,435	136,607	140,223	133,329	141,598	122,075	139,583
0747	BOYDEN-HULL	36,032	37,380	40,839	35,415	40,786	40,591	38,181
0819	WEST HANCOCK	43,526	42,282	42,894	36,774	43,956	45,450	37,187
0846	BROOKLYN-GUERNSEY-MALCOM	34,596	35,108	32,194	34,561	35,233	33,922	36,228
0873	NORTH IOWA	39,340	36,207	34,473	33,046	38,499	34,407	30,276
0882	BURLINGTON	352,451	323,481	310,544	315,846	306,761	311,664	306,026
0914	C AND M	15,563	14,139	11,185	13,336	12,966	12,619	11,150
0916	CAL	13,403	20,098	16,994	14,489	13,547	16,740	17,653
0918	CALAMUS-WHEATLAND	30,991	33,306	35,211	36,167	33,268	31,537	33,938
0936	CAMANCHE	54,770	65,282	59,951	61,551	62,514	66,916	64,167
0977	CARDINAL	46,258	44,565	43,861	40,193	46,514	40,565	39,765
0981	CARLISLE	63,861	70,771	74,980	80,934	92,312	98,642	98,399
0999	CARROLL	107,814	116,686	109,679	104,361	99,192	101,604	108,238

1044 CEDAR FALLS	231,929	227,384	229,339	233,759	234,760	226,487	243,252
1053 CEDAR RAPIDS	1,171,963	1,146,873	1,076,799	1,145,571	1,128,932	1,111,044	1,127,042
1062 CENTER POINT-URBANA	65,589	64,080	65,066	61,914	65,588	67,778	68,087
1071 CENTERVILLE	119,896	112,348	101,631	94,895	96,110	99,975	90,728
1079 CENTRAL LEE	60,106	61,941	58,037	58,596	56,531	55,271	55,170
1080 CENTRAL	36,608	39,244	35,592	34,694	30,788	29,498	30,685
1082 CENTRAL CLINTON	76,683	78,374	71,914	72,849	78,834	75,324	82,967
1089 CENTRAL CITY	28,829	28,865	29,864	25,879	25,572	27,648	25,648
1093 CENTRAL DECATUR	53,752	58,451	71,095	58,378	53,003	53,112	46,472
1095 CENTRAL LYON	40,502	34,207	31,620	30,699	28,609	36,052	36,665
1107 CHARITON	92,810	95,685	90,848	92,280	95,198	90,971	91,222
1116 CHARLES CITY	100,875	106,378	114,058	103,916	99,631	83,839	90,185
1134 CHARTER OAK-UTE	21,041	22,581	21,328	20,297	21,900	19,611	20,034
1152 CHEROKEE	66,877	73,525	68,613	67,226	67,426	69,485	65,534
1197 CLARINDA COMMUNITY	53,901	58,274	52,030	61,355	57,665	61,611	51,999
1206 CLARION-GOLDFIELD	66,436	65,375	59,911	57,875	58,650	61,335	58,686
1211 CLARKE	104,197	102,399	92,840	94,566	88,549	87,451	86,107
1215 CLARKSVILLE	26,950	26,425	24,278	23,634	19,726	19,311	21,318
1218 CLAY CENTRAL-EVERLY	30,264	26,687	25,016	22,491	21,298	20,931	20,745
1221 CLEAR CREEK-AMANA	72,938	73,086	72,035	71,243	72,219	69,421	69,286
1224 CLEARFIELD	5,044	9,091	10,149	9,072	7,711	7,478	6,730
1233 CLEAR LAKE	91,236	90,733	90,260	85,897	80,866	80,972	76,193
1278 CLINTON	333,309	326,443	299,735	304,817	305,686	308,629	304,110
1332 COLFAX-MINGO	55,634	48,001	47,782	41,254	44,172	42,233	41,014
1337 COLLEGE	200,073	202,154	214,471	209,753	236,553	233,545	240,000
1350 COLLINS-MAXWELL	28,109	26,719	28,248	27,259	26,770	31,422	31,561
1359 COLO-NESCO	31,132	30,091	31,439	27,568	31,808	29,916	25,833
1368 COLUMBUS	87,758	101,255	100,703	78,078	74,074	69,134	69,500
1413 COON RAPIDS-BAYARD	28,824	34,803	30,779	30,348	28,443	30,748	31,821
1431 CORNING	36,032	37,767	38,778	35,631	29,328	27,506	33,444
1449 CORWITH-WESLEY	12,970	11,584	12,339	16,199	12,148	11,391	12,317
1476 COUNCIL BLUFFS	723,730	715,189	655,666	682,493	664,180	672,919	676,573
1503 CRESTON	99,574	102,188	97,656	100,909	103,794	97,223	93,525
1576 DALLAS CENTER-GRIMES	78,283	87,583	81,731	88,906	95,251	95,800	96,594
1602 DANVILLE	30,848	29,117	31,902	32,285	32,970	35,774	31,262
1611 DAVENPORT	1,209,479	1,187,172	1,166,073	1,156,359	1,120,765	1,204,463	1,183,589
1619 DAVIS COUNTY	81,570	81,526	79,259	80,170	79,261	74,185	68,791
1638 DECORAH	71,934	78,690	74,647	82,932	78,302	82,318	79,819
1647 DEEP RIVER-MILLERSBURG	12,538	13,364	12,075	12,368	10,838	9,702	9,021
1675 DELWOOD	16,576	16,894	13,111	12,831	15,290	11,230	15,044
1701 DENISON	110,811	122,307	124,612	133,593	139,848	131,390	130,128
1719 DENVER	38,202	38,564	38,027	38,011	34,707	32,581	32,876
1737 DES MOINES INDEPENDENT	2,596,857	2,567,854	2,511,546	2,507,569	2,574,160	2,525,602	2,357,092
1782 DIAGONAL	6,051	5,226	6,951	7,373	8,418	8,706	8,058
1791 DIKE-NEW HARTFORD	38,053	38,250	38,911	41,296	41,786	40,754	41,988
1854 DOWS	12,104	15,050	13,627	11,472	12,683	11,183	10,302
1863 DUBUQUE	500,708	567,130	581,118	595,278	636,748	634,768	661,459
1908 DUNKERTON	30,122	29,200	24,764	27,383	28,771	30,587	31,419
1917 BOYER VALLEY	32,568	29,127	27,295	33,767	25,234	29,244	31,895
1926 DURANT	39,928	37,339	35,865	32,501	28,209	29,824	28,681
1944 EAGLE GROVE	60,816	56,138	52,868	52,303	56,199	56,357	56,718
1953 EARLHAM	29,697	31,108	32,516	29,216	28,880	31,308	35,254
1963 EAST BUCHANAN	29,402	30,531	29,390	28,793	32,031	31,004	32,932
1965 EAST CENTRAL	24,647	24,571	21,971	23,232	24,602	21,395	19,880
1967 EAST GREENE	28,820	28,592	25,527	24,993	25,584	28,316	22,230
1968 EAST MARSHALL	58,943	57,154	48,428	49,976	44,753	44,503	43,033
1969 EAST MONONA	14,696	12,516	11,742	0	0	0	0
1970 EAST UNION	35,165	32,091	23,991	25,467	26,700	31,118	34,319
1972 EASTERN ALLAMAKEE	26,090	24,100	23,593	23,964	26,664	23,340	22,807
1975 RIVER VALLEY	34,299	33,745	30,937	25,858	27,624	29,661	29,675
1989 EDGEWOOD-COLESBURG	37,764	36,731	37,665	37,433	38,953	38,968	36,272
2007 ELDORA-NEW PROVIDENCE	38,629	43,151	47,076	46,320	46,053	43,158	41,238

2016 ELK HORN-KIMBALLTON	17,584	15,721	13,398	13,109	12,894	13,800	14,863
2088 EMMETSBURG	34,450	39,873	41,605	38,896	43,248	42,325	43,890
2097 ENGLISH VALLEYS	26,233	26,970	25,783	26,971	27,290	26,767	27,161
2113 ESSEX	18,736	21,397	22,797	17,095	16,058	17,459	19,487
2124 ESTHERVILLE LINCOLN	97,852	91,779	87,447	90,683	86,644	89,257	90,979
2151 EXIRA	16,430	19,627	16,994	17,074	18,155	16,069	15,822
2169 FAIRFIELD	123,951	127,787	115,132	111,497	121,089	116,881	117,204
2205 FARRAGUT	21,619	20,381	15,829	14,767	11,783	14,263	12,297
2295 FOREST CITY	79,994	79,704	76,417	71,356	73,013	79,467	81,038
2313 FORT DODGE	319,467	298,251	289,210	295,457	284,780	289,182	283,946
2322 FORT MADISON	155,786	156,431	146,557	144,820	143,449	150,475	151,504
2327 FOX VALLEY	14,985	13,468	9,850	0	0	0	0
2349 FREDERICKSBURG	18,164	19,701	18,492	18,526	17,114	17,713	16,490
2367 FREMONT	10,377	9,625	9,603	9,804	8,918	13,313	14,997
2369 FREMONT-MILLS	29,546	28,017	24,735	26,054	27,058	27,113	24,363
2376 GALVA-HOLSTEIN	26,521	33,075	38,227	35,878	30,721	31,860	28,693
2394 GARNAVILLO	12,971	11,552	13,240	10,700	0	0	0
2403 GARNER-HAYFIELD	46,415	45,634	43,572	47,989	47,926	45,013	45,076
2457 GEORGE-LITTLE ROCK	14,703	15,239	25,315	25,065	30,959	30,726	30,457
2466 GILBERT	40,659	38,105	41,075	45,097	44,194	51,570	48,022
2493 GILMORE CITY-BRADGATE	8,936	8,903	8,292	9,804	8,292	8,034	8,172
2502 GLADBROOK-REINBECK	42,092	38,585	33,991	34,901	35,152	37,350	31,152
2511 GLENWOOD	128,701	123,222	120,279	114,371	122,046	118,435	124,299
2520 GLIDDEN-RALSTON	19,748	19,638	19,787	21,646	19,191	19,172	22,006
2556 GRAETTINGER	16,718	19,344	19,038	16,600	15,498	13,198	14,977
2570 GRAND	6,052	6,399	2,477	5,530	0	0	0
2664 GREENE	15,281	18,727	14,440	17,857	16,750	16,672	14,407
2673 NODAWAY VALLEY	51,308	46,167	46,531	45,466	45,259	42,511	42,798
2682 GMG	24,935	28,949	30,650	28,309	29,529	26,905	26,013
2709 GRINNELL-NEWBURG	106,515	116,403	108,976	105,082	101,350	101,139	101,287
2718 GRISWOLD	44,245	41,496	42,736	39,030	35,426	37,324	33,710
2727 GRUNDY CENTER	36,471	36,270	32,921	31,718	33,662	34,500	35,706
2754 GUTHRIE CENTER	35,170	32,866	36,235	32,284	33,229	31,791	31,828
2763 CLAYTON RIDGE (GUTTENBERG)	23,924	23,576	23,687	22,378	33,647	36,259	33,683
2766 H-L-V	20,327	21,586	20,840	19,876	20,837	17,413	17,409
2772 HAMBURG	25,073	23,230	25,685	21,873	18,014	21,046	19,275
2781 HAMPTON-DUMONT	79,845	84,700	85,320	76,473	82,000	75,437	82,834
2826 HARLAN	82,586	85,150	72,629	80,253	72,799	84,492	83,957
2834 HARMONY	29,114	27,462	27,014	26,435	24,356	23,594	22,257
2846 HARRIS-LAKE PARK	21,906	18,245	17,333	16,559	16,906	17,343	19,786
2862 HARTLEY-MELVIN-SANBORN	43,961	44,146	41,600	41,038	44,365	38,575	36,594
2977 HIGHLAND	30,707	30,835	31,796	35,148	36,299	36,794	34,975
2988 HINTON	26,670	28,478	26,104	26,230	32,347	32,858	32,554
3029 HOWARD-WINNESHIEK	77,249	78,175	75,312	74,218	76,658	73,168	74,261
3033 HUBBARD-RADCLIFFE	29,690	27,095	27,797	23,397	25,608	21,187	21,134
3042 HUDSON	50,017	46,399	44,591	39,308	38,219	38,044	34,150
3060 HUMBOLDT	73,369	73,819	69,320	67,061	75,899	74,765	71,200
3105 INDEPENDENCE	88,347	84,176	87,657	77,596	79,421	78,564	81,156
3114 INDIANOLA	155,111	159,893	169,387	174,565	170,755	182,765	188,842
3119 INTERSTATE 35	38,344	41,016	40,110	41,018	40,699	49,598	47,642
3141 IOWA CITY	642,283	667,486	653,835	671,747	655,581	644,015	686,169
3150 IOWA FALLS	64,285	62,591	64,044	63,128	69,260	73,006	68,406
3154 IOWA VALLEY	39,639	36,627	39,912	40,647	35,926	32,301	29,223
3168 IKM	24,065	22,748	24,577	23,933	25,942	22,761	20,658
3186 JANESVILLE CONSOLIDATED	18,882	17,428	16,185	14,624	16,184	13,153	12,026
3195 JEFFERSON-SCRANTON	91,233	85,789	76,882	71,015	65,016	67,865	67,479
3204 JESUP	49,723	46,388	47,185	50,132	46,535	48,209	50,981
3231 JOHNSTON	199,986	204,319	216,612	222,736	245,339	254,310	269,746
3312 KEOKUK	191,917	182,778	183,322	171,376	155,878	148,618	138,795
3330 KEOTA	20,615	23,367	18,949	18,887	15,284	15,329	15,739
3348 KINGSLEY-PIERSON	27,243	26,331	25,203	28,042	27,790	32,509	34,284
3375 KNOXVILLE	128,994	128,312	123,347	120,971	121,209	113,178	116,280

3420 LAKE MILLS	35,890	36,134	37,547	40,636	43,944	43,417	41,685
3465 LAMONI	20,033	22,246	21,391	24,077	21,818	20,676	21,817
3537 LAURENS-MARATHON	27,096	25,943	23,687	24,643	20,247	19,426	20,470
3555 LAWTON-BRONSON	36,040	35,024	32,065	27,919	26,794	28,714	31,018
3600 LE MARS	124,252	122,376	124,338	125,288	121,514	127,724	116,712
3609 LENOX	25,219	27,252	25,415	26,229	22,911	23,988	27,243
3645 LEWIS CENTRAL	178,555	168,707	155,472	163,007	154,131	183,888	181,045
3691 NORTH CEDAR	54,919	56,223	58,528	56,073	52,675	47,121	45,599
3705 LINEVILLE-CLIO	4,611	3,268	4,937	5,808	3,193	4,700	5,905
3715 LINN-MAR	247,398	251,783	255,608	266,748	291,102	291,979	307,617
3744 LISBON	30,709	29,432	32,381	37,156	37,036	31,515	29,576
3771 LITTLE ROCK	11,962	9,919	0	0	0	0	0
3798 LOGAN-MAGNOLIA	37,622	39,067	38,865	37,784	36,825	38,761	35,612
3816 LONE TREE	23,931	18,539	24,359	26,065	25,870	25,332	24,921
3841 LOUISA-MUSCATINE	59,381	52,107	53,984	52,736	53,894	52,468	51,752
3897 LUVERNE	6,197	6,860	4,925	1,298	4,406	1,875	275
3906 LYNNVILLE-SULLY	23,790	29,557	26,830	25,591	22,944	21,211	22,037
3942 MADRID	30,418	30,814	31,058	29,536	33,479	36,216	33,242
3978 MALVERN	21,908	23,304	24,436	27,135	19,236	22,576	20,403
4014 MANNING	31,131	26,205	26,801	28,402	27,983	26,490	23,797
4023 MANSON NORTHWEST WEBSTER	46,848	44,880	39,444	37,228	33,217	28,343	29,730
4033 MAPLE VALLEY	36,894	32,729	32,659	30,987	27,630	24,728	25,137
4041 MAQUOKETA	101,734	93,569	100,907	91,352	92,077	92,612	94,849
4043 MAQUOKETA VALLEY	48,142	42,105	45,733	45,569	45,885	43,902	41,796
4068 MARCUS-MERIDEN-CLEGHORN	28,831	29,704	29,143	32,635	25,779	24,290	21,507
4086 MARION INDEPENDENT	111,133	106,549	101,566	114,670	121,248	122,837	128,397
4104 MARSHALLTOWN	371,618	378,548	378,094	387,682	407,977	389,356	386,662
4122 MARTENSDALE-ST MARYS	25,082	25,001	23,306	22,471	20,085	23,318	25,816
4131 MASON CITY	277,709	296,809	284,438	270,714	266,861	252,656	268,249
4149 MOC-FLOYD VALLEY	66,599	71,902	69,782	68,112	66,398	66,688	71,800
4203 MEDIAPOLIS	55,783	57,647	54,722	50,245	45,076	48,602	47,473
4212 MELCHER-DALLAS	26,086	29,598	27,705	23,428	20,545	21,140	23,629
4266 MESERVEY-THORNTON	8,072	8,306	8,303	8,424	8,181	0	0
4269 MIDLAND	42,083	42,931	37,484	35,404	26,047	29,591	30,913
4271 MID-PRAIRIE	70,338	72,247	72,629	71,325	69,275	66,662	62,685
4356 MISSOURI VALLEY	54,622	54,756	54,214	49,019	51,288	47,837	51,748
4419 MFL MARMAC	54,913	55,080	51,895	50,337	53,202	57,422	54,702
4437 MONTEZUMA	28,829	30,332	32,599	30,904	31,995	28,873	28,649
4446 MONTICELLO	52,467	52,714	49,200	50,224	50,337	50,616	50,659
4491 MORAVIA	20,175	25,764	21,339	19,473	24,058	22,227	25,000
4505 MORMON TRAIL	22,909	18,841	18,412	17,146	18,869	18,406	17,170
4509 MORNING SUN	14,989	17,710	19,161	16,508	17,225	17,528	14,451
4518 MOULTON-UDELL	22,912	19,826	15,553	16,106	14,234	17,411	14,883
4527 MOUNT AYR	42,947	45,277	45,876	44,621	44,097	40,335	39,525
4536 MOUNT PLEASANT	123,090	126,698	125,144	127,202	126,432	131,472	134,715
4554 MOUNT VERNON	51,035	50,149	50,463	54,612	53,820	57,428	62,268
4572 MURRAY	24,497	26,539	26,681	24,674	23,082	21,440	22,254
4581 MUSCATINE	362,733	358,015	351,536	341,265	348,908	353,994	337,386
4599 NASHUA-PLAINFIELD	49,433	48,838	47,392	43,200	43,248	36,932	36,570
4617 NEVADA	86,056	88,608	83,579	84,599	86,181	93,891	97,763
4644 NEWELL-FONDA	25,075	23,324	24,993	23,912	26,411	27,091	26,838
4662 NEW HAMPTON	58,232	56,841	53,890	49,699	51,670	46,796	51,233
4689 NEW LONDON	32,864	34,238	30,386	34,405	34,754	35,309	33,887
4698 NEW MARKET	10,233	8,923	9,733	9,937	7,741	7,895	6,113
4725 NEWTON	193,005	199,188	193,637	193,285	201,367	199,199	198,657
4751 NISHNA VALLEY	22,625	19,166	17,990	14,510	12,208	14,842	16,278
4761 NORA SPRINGS-ROCK FALLS	31,273	25,158	28,038	23,686	24,350	22,460	22,560
4772 NORTH CENTRAL	36,463	32,615	32,131	37,979	32,738	28,434	32,583
4773 NORTHEAST	31,426	36,553	35,139	32,635	37,274	40,451	37,262
4774 NORTH FAYETTE	76,097	69,576	65,094	54,549	54,460	53,232	46,306
4775 NORTHEAST HAMILTON	14,704	14,789	16,291	14,963	16,377	15,097	17,857
4776 NORTH MAHASKA	31,711	34,678	34,034	30,277	32,732	30,843	32,201



4777 NORTH-LINN	42,669	41,529	39,608	41,563	36,648	37,095	37,996
4778 NORTH KOSSUTH	22,194	18,580	21,948	23,541	19,272	18,153	17,837
4779 NORTH POLK	48,588	48,244	49,536	51,842	52,011	50,390	55,172
4784 NORTH SCOTT	144,733	129,070	135,709	149,571	153,593	136,762	153,874
4785 NORTH TAMA COUNTY	30,125	23,284	26,245	29,165	30,746	30,750	26,225
4787 NORTH WINNESHIEK	21,331	17,198	16,285	18,794	19,413	17,690	20,081
4788 NORTHWOOD-KENSETT	31,419	30,939	27,803	27,671	27,513	26,790	28,968
4797 NORWALK	99,338	105,672	112,114	120,326	113,006	119,902	118,093
4860 ODEBOLT-ARTHUR	21,764	22,246	26,124	25,415	24,042	17,666	15,963
4869 OELWEIN	100,152	105,844	102,563	98,818	88,681	82,472	82,944
4878 OGDEN	39,210	46,367	46,430	46,774	40,109	40,127	36,185
4890 OKOBOJI	53,184	50,336	48,146	48,360	50,559	51,403	46,927
4905 OLIN CONSOLIDATED	17,584	17,271	15,401	14,253	14,664	13,452	12,730
4978 ORIENT-MACKSBURG	16,142	16,056	14,968	14,664	11,985	9,494	8,911
4995 OSAGE	55,347	47,655	46,301	44,426	50,138	47,122	48,490
5013 OSKALOOSA	158,393	168,530	154,344	164,674	154,459	151,774	159,586
5049 OTTUMWA	340,233	359,392	341,581	271,036	325,352	348,429	327,542
5121 PANORAMA	44,247	43,916	46,378	50,358	52,651	46,611	44,361
5130 PARKERSBURG	23,494	26,216	28,805	0	0	0	0
5139 PATON-CHURDAN	12,250	12,966	17,000	12,903	12,163	11,021	12,569
5160 PCM	53,055	51,595	51,915	50,750	51,785	50,712	52,478
5163 PEKIN	48,285	45,026	45,388	45,857	46,376	45,822	47,949
5166 PELLA	114,899	118,878	116,198	111,593	116,100	114,183	119,468
5184 PERRY	126,518	146,657	146,163	142,532	146,334	140,259	152,127
5250 PLEASANT VALLEY	130,620	138,623	141,689	150,655	152,390	154,872	160,398
5256 PLEASANTVILLE	33,444	36,867	34,772	35,024	34,607	41,168	41,725
5283 POCAHONTAS AREA	36,315	36,416	29,344	27,043	24,729	24,682	28,233
5301 POMEROY-PALMER	17,291	14,903	13,955	14,510	13,875	13,151	12,364
5310 POSTVILLE	40,784	39,579	39,441	42,571	45,821	48,065	50,201
5325 PRAIRIE VALLEY	44,972	45,780	50,173	43,602	42,111	40,821	38,633
5328 PRESCOTT	7,206	8,326	6,682	3,985	3,997	4,029	4,577
5337 PRESTON	21,762	18,214	17,344	19,134	20,636	20,539	18,737
5463 RED OAK	92,662	90,103	98,534	95,266	92,233	87,171	86,972
5486 REMSEN-UNION	25,226	23,933	20,553	21,585	21,812	22,761	18,438
5508 RICEVILLE	23,638	24,194	22,375	21,904	24,103	20,839	18,847
5510 RIVERSIDE	38,050	32,123	30,731	31,008	32,070	35,148	38,401
5607 ROCK VALLEY	38,481	36,291	38,971	38,216	43,324	42,258	39,505
5616 ROCKWELL-SWALEDALE	25,223	26,352	23,153	21,255	18,938	17,204	14,659
5625 ROCKWELL CITY-LYTTON	33,724	32,196	33,167	34,890	30,989	29,986	28,327
5643 ROLAND-STORY	54,497	49,647	54,111	52,398	48,950	48,304	53,169
5697 RUDD-ROCKFORD-MARBLE RK	38,912	36,102	33,127	29,885	29,605	32,346	32,606
5715 RUSSELL	16,571	18,674	16,087	13,181	10,101	8,845	7,143
5724 RUTHVEN-AYRSHIRE	14,412	13,637	15,255	14,510	15,275	16,902	18,431
5742 SAC	29,258	30,310	30,521	29,596	31,480	31,489	29,129
5751 ST ANSGAR	41,942	38,784	37,846	38,947	37,825	33,807	36,943
5805 SAYDEL	104,330	90,815	88,759	96,605	90,358	91,594	84,162
5823 SCHALLER-CRESTLAND	30,841	31,954	28,822	28,340	25,861	27,923	21,912
5832 SCHLESWIG	17,295	14,506	17,310	20,658	22,011	18,060	15,778
5868 SENTRAL	16,716	15,333	15,519	13,346	14,366	14,262	14,765
5877 SERGEANT BLUFF-LUTON	74,669	76,574	76,211	73,087	87,626	88,569	85,893
5895 SEYMOUR	21,043	20,214	23,102	21,718	20,849	23,593	17,193
5922 SHEFFIELD-CHAPIN	15,423	17,146	18,065	16,724	18,968	24,499	24,391
5949 SHELDON	60,819	57,668	53,118	52,428	50,502	53,117	59,700
5976 SHENANDOAH	69,753	74,561	76,227	81,981	77,130	74,092	72,626
5994 SIBLEY-OCHEYEDAN	46,987	51,132	47,888	49,163	47,017	49,318	50,058
6003 SIDNEY	27,669	26,487	28,566	25,961	23,112	27,784	26,626
6012 SIGOURNEY	46,981	41,747	40,781	36,681	35,790	39,478	33,392
6030 SIOUX CENTER	51,741	55,018	54,886	55,980	56,561	59,415	61,126
6035 SIOUX CENTRAL	26,231	24,163	25,613	22,666	24,804	23,433	24,984
6039 SIOUX CITY	1,041,325	1,030,269	1,000,836	1,062,264	974,132	1,022,923	1,003,528
6091 SOUTHERN CAL	46,978	33,055	33,888	27,712	30,237	27,484	28,116
6092 SOUTH CLAY	11,673	9,782	6,997	6,313	6,700	6,738	6,435

6093 SOLON	47,871	54,413	53,787	59,638	59,286	55,971	53,734
6094 SOUTHEAST WARREN	32,432	33,620	30,263	27,259	26,688	27,184	31,121
6095 SOUTH HAMILTON	38,920	46,367	39,152	37,228	36,804	39,641	43,992
6096 SOUTHEAST WEBSTER-GRAND	34,156	37,306	34,597	29,092	35,350	36,606	39,792
6097 SOUTH PAGE	20,895	16,506	19,026	18,042	15,118	15,537	13,276
6098 SOUTH TAMA COUNTY	113,269	108,034	109,400	124,584	124,104	115,325	101,791
6099 SOUTH O'BRIEN COMMUNITY	43,243	40,292	40,621	38,371	36,588	33,274	32,681
6100 SOUTH WINNESHIEK	32,287	33,348	28,957	28,804	26,977	25,702	28,005
6101 SOUTHEAST POLK	249,526	245,297	265,265	277,506	293,301	292,456	303,886
6102 SPENCER	111,268	110,213	115,408	114,709	115,945	113,593	116,524
6120 SPIRIT LAKE	68,326	62,078	63,697	62,892	73,901	70,278	74,028
6138 SPRINGVILLE	24,938	23,608	22,760	22,069	20,503	20,308	23,110
6165 STANTON	18,305	16,884	15,858	13,851	12,283	13,569	12,392
6175 STARMONT	57,072	55,006	51,421	48,915	44,871	44,502	43,713
6219 STORM LAKE	142,515	147,453	141,215	144,334	141,609	152,368	152,087
6246 STRATFORD	10,523	10,955	10,780	10,411	9,752	12,226	11,358
6264 WEST CENTRAL VALLEY	58,368	54,232	57,446	58,967	61,702	55,894	53,901
6273 SUMNER	38,487	40,229	33,185	36,177	32,247	28,874	28,378
6345 TERRIL	10,523	10,076	7,155	7,291	8,479	9,469	8,196
6408 TIPTON	44,685	45,152	40,205	40,297	40,684	43,741	45,991
6417 TITONKA CONSOLIDATED	16,427	13,333	12,947	12,811	11,248	10,118	9,158
6453 TREYNOR	26,385	26,437	28,363	32,327	33,711	34,203	36,224
6460 TRI-CENTER	39,785	37,172	43,448	41,193	40,305	34,249	39,513
6462 TRI-COUNTY	21,186	28,111	23,383	21,348	19,019	19,936	21,428
6471 TRIPOLI	31,279	29,578	27,100	25,869	24,031	28,225	28,697
6509 TURKEY VALLEY	28,973	27,054	28,259	23,171	23,025	21,187	18,690
6512 TWIN CEDARS	31,279	42,585	38,374	35,024	27,886	25,840	31,302
6516 TWIN RIVERS	13,258	11,154	9,733	8,661	7,868	9,516	10,027
6534 UNDERWOOD	34,889	33,318	33,242	33,017	37,268	36,703	39,681
6536 UNION	70,633	70,729	70,683	72,128	67,975	69,280	68,021
6561 UNITED	20,324	19,533	20,226	16,858	22,116	17,459	15,527
6579 URBANDALE	153,547	150,207	150,270	148,935	157,819	166,490	182,170
6591 VALLEY	48,993	39,705	36,910	35,991	31,055	32,809	31,345
6592 VAN BUREN	35,455	36,804	38,549	41,841	44,290	48,762	41,214
6615 VAN METER	28,113	25,630	25,108	24,407	28,507	32,974	31,156
6633 VENTURA	19,316	19,513	20,395	19,011	18,559	16,880	17,220
6651 VILLISCA	28,392	25,838	23,283	23,757	23,961	28,223	23,464
6660 VINTON-SHELLSBURG	113,571	115,146	107,555	103,609	104,959	103,986	101,606
6700 WACO	34,443	29,975	25,016	24,417	28,741	32,508	31,439
6741 WALL LAKE VIEW AUBURN	36,030	41,768	42,550	34,581	34,971	30,216	28,052
6750 WALNUT	18,014	17,847	16,414	15,632	19,100	16,786	18,336
6759 WAPELLO	52,889	56,232	50,712	63,260	59,980	63,323	54,746
6762 WAPSIE VALLEY	34,313	38,104	36,761	34,942	33,524	32,674	37,866
6768 WASHINGTON	94,117	103,479	101,680	103,639	108,851	105,584	107,849
6795 WATERLOO	914,650	906,824	878,976	857,436	788,727	755,335	760,892
6822 WAUKEE	145,905	178,854	204,712	246,987	271,069	295,202	324,348
6840 WAVERLY-SHELL ROCK	93,409	95,479	88,929	88,894	83,455	88,710	91,614
6854 WAYNE	48,705	45,988	46,281	39,039	33,400	33,040	32,630
6867 WEBSTER CITY	95,843	92,230	104,481	102,558	103,873	99,679	101,366
6921 WEST BEND-MALLARD	23,058	21,953	19,038	18,217	17,650	12,991	15,806
6930 WEST BRANCH	44,544	40,702	39,841	39,824	38,087	35,382	36,857
6937 WEST BURLINGTON IND	50,445	49,896	52,001	47,062	50,743	48,043	50,161
6943 WEST CENTRAL	18,448	20,476	22,949	18,691	18,796	17,829	18,069
6950 WEST DELAWARE COUNTY	94,413	106,057	85,734	83,343	83,225	87,524	84,688
6957 WEST DES MOINES	433,662	453,573	449,042	428,761	436,864	430,728	441,199
6961 WESTERN DUBUQUE	133,178	130,889	121,734	134,123	151,149	148,148	149,577
6969 WEST HARRISON	31,415	32,405	28,905	30,297	31,955	26,997	25,715
6975 WEST LIBERTY	74,506	73,681	71,383	76,771	77,608	79,185	79,840
6983 WEST LYON	41,947	43,801	41,979	40,976	37,714	40,128	39,281
6985 WEST MARSHALL	55,635	50,221	52,374	44,704	42,105	38,831	48,050
6987 WEST MONONA	46,267	49,069	46,413	51,480	53,274	46,331	48,216
6990 WEST SIOUX	55,620	52,628	45,161	40,636	43,709	43,506	44,923

6992 WESTWOOD	45,257	40,030	40,710	37,299	36,684	38,921	34,280
7002 WHITING	15,276	16,066	10,622	11,256	11,389	13,476	14,494
7029 WILLIAMSBURG	59,962	63,491	59,992	55,734	52,715	52,192	52,336
7038 WILTON	52,756	51,080	47,590	49,482	46,385	48,555	50,263
7047 WINFIELD-MT UNION	27,671	25,974	22,112	23,346	23,076	25,979	25,829
7056 WINTERSET	94,981	90,125	91,150	96,741	103,563	102,530	100,265
7083 WODEN-CRYSTAL LAKE	13,690	10,421	10,605	9,773	7,064	6,992	7,143
7092 WOODBINE	31,998	26,341	30,251	25,354	22,020	24,706	24,548
7098 WOODBURY CENTRAL	39,928	35,768	36,428	36,621	36,314	33,229	38,959
7110 WOODWARD-GRANGER	26,668	29,274	29,430	32,872	33,388	37,883	40,063
STATE TOTALS	29,999,996	30,000,007	29,325,007	29,250,011	29,250,006	29,250,008	29,250,000

Source: FY 07 Certified Annual Report

## Appendix F

### GRADE 4 READING ASSESSMENT SUMMARY TABLE

Item	2003	2004	2005	2006	2007
Number of Students Enrolled	35,099	34,391	33,697	33,827	34,006
Number of Students Proficient	26,679	25,772	26,439	25,852	26,957
Number of Students Not Proficient	8,331	8,476	7,194	7,876	6,937
Number of Students Not Tested	268	121	132	99	112

Item	2003	2004	2005	2006	2007
Number of Students Enrolled	35,099	34,391	33,697	33,827	34,006
Percent of Students Proficient	76.2 %	75.3 %	78.6 %	76.6%	79.5%
Percent of Students Not Proficient	23.8 %	24.7 %	21.4 %	23.4%	20.5%
Percent of Students Not Tested	0.8 %	0.4 %	0.4 %	0.3%	0.3%

### DISTRICTS IMPROVING PROFICIENCY PERCENTAGES

Item	2003- 2004	2004- 2005	2005- 2006	2006- 2007
Districts increasing Proficiency %	41.6 %	62.5 %	37.7%	65.7%
Districts staying the same	2.7 %	0.6 %	1.4%	0.8%

Source: Iowa Department of Education, Adequate Yearly Progress (AYP files)

## NUMBER NOT PROFICIENT ON IOWA TESTS OF BASIC SKILLS 2004-2007

District Name	04 Enroll	04 # (of tested not Proficient ALL Students	05 Enroll	05 # (of total not Proficient ALL Students	06 Enroll	06 # (of tested not Proficient ALL students	07 Enroll	07 # (of tested not Proficient All Students
AGWSR CSD	47	12	46	13	46	10	47	13
Adair-Casey CSD	20	6	28	8	27	less than 5	22	7
Adel-DeSoto-Minburn CSD	121	18	96	8	98	13	122	17
Akron Westfield CSD	48	16	39	15	37	less than 5	36	less than 5
Albert City-Truesdale CSD	19	5	14	less than 5	16	less than 5	10	less than 5
Albia CSD	100	23	79	15	94	29	80	14
Alburnett CSD	41	6	46	6	42	5	62	10
Alden CSD	25	7	12	less than 5	17	5	10	less than 5
Algona CSD	86	14	77	15	85	13	82	8
Allamakee CSD	97	21	96	21	79	12	78	9
Allison-Bristow CSD	32	6	25	5	20	less than 5	20	less than 5
Alta CSD	48	12	41	7	32	7	28	less than 5
Ames CSD	292	41	305	29	305	55	322	44
Anamosa CSD	90	24	106	19	75	18	72	9
Andrew CSD	19	less than 5	20	less than 5	17	less than 5	15	less than 5
Anita CSD	21	less than 5	18	less than 5	14	less than 5	14	less than 5
Ankeny CSD	510	71	513	50	571	87	577	78
Anthon-Oto CSD	20	less than 5	23	less than 5	24	6	17	6
Aplington-Parkersburg CSD	23	less than 5	63	17	51	11	52	11
Armstrong-Ringsted CSD	31	9	25	5	27	less than 5	22	5
Ar-We-Va CSD	25	less than 5	35	6	18	less than 5	19	less than 5
Atlantic CSD	104	29	109	25	108	31	109	23
Audubon CSD	52	7	60	8	42	9	42	8
Aurelia CSD	17	less than 5	17	less than 5	15	less than 5	21	less than 5
A-H-S-T CSD	36	13	43	12	38	10	44	11
Ballard CSD	102	22	100	12	94	18	120	11
Battle Creek-Ida Grove CSD	57	7	42	less than 5	56	11	51	6
Baxter CSD	20	less than 5	31	less than 5	29	5	26	6
BCLUW CSD	66	14	47	6	53	5	40	less than 5
Bedford CSD	41	6	35	5	34	less than 5	34	less than 5
Belle Plaine CSD	47	7	53	14	41	10	27	9
Bellevue CSD	51	15	40	5	42	less than 5	52	12
Belmond-Klemme CSD	47	5	28	6	50	13	55	less than 5
Bennett CSD	16	less than 5	9	less than 5	15	less than 5	10	less than 5

Source: Iowa Department of Education, Adequate Yearly Progress (AYP files)

## NUMBER NOT PROFICIENT ON IOWA TESTS OF BASIC SKILLS 2004-2007

District Name	04 Enroll	04 # (of tested) not Proficient ALL Students	05 Enroll	05 # (of total) not Proficient ALL Students	06 Enroll	06 # (of tested) not Proficient ALL students	07 Enroll	07 # (of tested) not Proficient All Students
Benton CSD	124	24	117	11	115	14	97	11
Bettendorf CSD	309	58	312	59	327	39	290	55
Bondurant-Farrar CSD	88	19	69	13	89	14	91	8
Boone CSD	149	27	156	29	161	41	158	28
Boyden-Hull CSD	40	11	38	less than 5	38	10	55	12
Boyer Valley CSD	34	6	32	8	28	6	32	5
Brooklyn-Guernsey-Malcom	42	8	45	9	37	8	42	9
Burlington CSD	297	73	309	61	307	83	308	58
C and M CSD	10	less than 5	9	less than 5	9	less than 5	16	less than 5
CAL CSD	17	less than 5	12	less than 5	14	less than 5	22	6
Calamus-Wheatland CSD	42	11	52	6	46	7	39	5
Camanche CSD	75	17	71	23	76	19	78	20
Cardinal CSD	57	21	34	8	52	8	50	18
Carlisle CSD	115	30	88	12	129	30	143	18
Carroll CSD	142	25	152	29	120	24	120	22
Cedar Falls CSD	334	34	342	54	313	38	318	27
Cedar Rapids CSD	1283	415	1234	335	1139	291	1216	296
Center Point-Urbana CSD	99	33	96	27	93	20	81	14
Centerville CSD	120	35	114	23	101	30	107	34
Central CSD	38	13	46	10	39	9	31	less than 5
Central City CSD	45	22	35	9	22	8	47	9
Central Clinton CSD	82	8	93	13	109	12	90	12
Central Decatur CSD	51	14	63	11	49	20	57	18
Central Lee CSD	70	20	75	16	69	12	71	9
Central Lyon CSD	54	7	49	6	28	less than 5	36	less than 5
Chariton CSD	139	43	96	18	113	25	103	14
Charles City CSD	102	22	109	18	127	34	97	15
Charter Oak-Ute CSD	21	7	18	less than 5	24	6	20	8
Cherokee CSD	73	18	83	17	72	22	64	14
Clarinda CSD	53	8	60	14	65	15	59	9
Clarion-Goldfield CSD	70	20	69	7	59	15	70	17
Clarke CSD	101	34	100	22	102	17	82	20
Clarksville CSD	29	10	24	less than 5	29	5	23	5
Clay Central-Everly CSD	32	less than 5	22	less than 5	27	less than 5	25	5
Clayton Ridge					42	15	47	17

Source: Iowa Department of Education, Adequate Yearly Progress (AYP files)

## NUMBER NOT PROFICIENT ON IOWA TESTS OF BASIC SKILLS 2004-2007

District Name	04 Enroll	04 # (of tested) not Proficient ALL Students	05 Enroll	05 # (of total) not Proficient ALL Students	06 Enroll	06 # (of tested) not Proficient ALL students	07 Enroll	07 # (of tested) not Proficient All Students
Clear Creek Amana CSD	101	27	103	25	116	20	115	26
Clear Lake CSD	112	22	128	32	113	25	107	15
Clearfield CSD	6	less than 5	7	less than 5	less than 5	less than 5	6	less than 5
Clinton CSD	322	103	290	54	280	71	309	80
Colfax-Mingo CSD	70	27	51	7	61	24	61	18
College CSD	283	53	294	59	291	56	339	40
Collins-Maxwell CSD	46	14	34	7	36	8	36	7
Colo-Nesco CSD	35	7	33	5	34	8	39	less than 5
Columbus CSD	97	53	66	26	73	25	72	20
Coon Rapids-Bayard CSD	36	10	22	7	31	8	37	9
Corning CSD	51	14	42	less than 5	36	5	35	10
Corwith-Wesley CSD	13	less than 5	17	less than 5	15	less than 5	13	less than 5
Council Bluffs CSD	693	264	673	215	634	219	670	203
Creston CSD	101	17	89	26	111	25	104	27
Dallas Center-Grimes CSD	112	15	115	9	135	12	134	12
Danville CSD	44	6	41	10	35	6	51	7
Davenport CSD	1165	405	1103	298	1143	374	1150	297
Davis County CSD	102	26	88	14	81	24	98	27
Decorah CSD	80	8	116	15	105	12	100	7
Deep River-Millersburg	13	less than 5	20	5	13	less than 5	10	less than 5
Delwood CSD	22	less than 5	21	less than 5	19	less than 5	16	less than 5
Denison CSD	111	41	143	43	116	45	121	38
Denver CSD	66	16	65	17	46	6	40	less than 5
Des Moines Independent	2324	749	2262	772	2286	808	2283	803
Diagonal CSD	5	less than 5	5	less than 5	5	less than 5	11	less than 5
Dike-New Hartford CSD	62	13	47	8	68	21	51	6
Dows CSD	10	5	9	less than 5	11	less than 5	8	less than 5
Dubuque CSD	732	162	710	162	719	176	768	180
Dunkerton CSD	31	11	36	5	26	less than 5	31	5
Durant CSD	52	11	50	9	48	6	53	15
Eagle Grove CSD	60	9	44	8	56	18	61	8
Earlham CSD	55	12	34	11	49	13	53	19
East Buchanan CSD	35	13	41	12	40	11	36	5
East Central CSD	19	less than 5	28	less than 5	28	6	27	less than 5
East Greene CSD	24	8	29	12	27	14	17	less than 5

Source: Iowa Department of Education, Adequate Yearly Progress (AYP files)

## NUMBER NOT PROFICIENT ON IOWA TESTS OF BASIC SKILLS 2004-2007

District Name	04 Enroll	04 # (of tested) not Proficient ALL Students	05 Enroll	05 # (of total) not Proficient ALL Students	06 Enroll	06 # (of tested) not Proficient ALL students	07 Enroll	07 # (of tested) not Proficient All Students
East Marshall CSD	54	11	66	8	64	6	55	5
East Monona		less than 5		less than 5		less than 5		less than 5
East Union CSD	28	less than 5	31	5	23	less than 5	22	6
Eastern Allamakee	29	7	32	5	39	7	26	9
Eddyville-Blakesburg	55	16	73	23	45	12	52	13
Edgewood-Colesburg	49	9	39	9	43	8	41	9
Eldora-New Providence	48	11	43	10	46	16	53	9
Elk Horn-Kimballton	21	less than 5	21	less than 5	17	6	20	less than 5
Emmetsburg CSD	47	9	40	5	53	13	47	6
English Valleys CSD	30	5	23	less than 5	33	7	37	8
Essex CSD	23	6	15	5	29	5	25	12
Estherville Lincoln Central CSD	94	19	88	16	102	34	82	10
Exira CSD	17	5	17	less than 5	25	7	19	8
Fairfield CSD	145	23	132	26	134	19	128	32
Farragut CSD	22	5	23	less than 5	12	6	13	less than 5
Forest City CSD	99	24	80	8	83	16	84	11
Fort Dodge CSD	281	93	285	81	271	92	266	67
Fort Madison CSD	151	32	161	23	156	31	147	22
Fox Valley CSD	8	less than 5		less than 5		less than 5		less than 5
Fredericksburg CSD	23	8	26	5	18	less than 5	22	less than 5
Fremont CSD	14	less than 5	11	less than 5	13	6	13	less than 5
Fremont-Mills CSD	32	11	33	11	29	less than 5	38	11
Galva-Holstein CSD	34	less than 5	33	5	38	5	38	less than 5
Garnavillo CSD	18	less than 5	15	less than 5				less than 5
Garner-Hayfield CSD	66	16	60	20	61	12	57	9
George-Little Rock	38	5	30	7	32	less than 5	31	less than 5
Gilbert CSD	73	6	78	7	77	12	82	8
Gilmore City-Bradgate	12	less than 5	11	5	15	less than 5	22	6
Gladbrook-Reinbeck	62	14	41	9	40	10	52	12
Glenwood CSD	148	31	155	27	131	14	147	22
Glidden-Ralston CSD	29	8	23	6	26	less than 5	23	less than 5
Graettinger CSD	30	11	16	less than 5	19	5	11	less than 5
Grand CSD		less than 5		less than 5		less than 5		less than 5
GMG CSD	39	11	34	7	44	7	32	less than 5
Greene CSD	16	less than 5	22	8	21	5	22	less than 5

Source: Iowa Department of Education, Adequate Yearly Progress (AYP files)



## NUMBER NOT PROFICIENT ON IOWA TESTS OF BASIC SKILLS 2004-2007

District Name	04 Enroll	04 # (of tested) not Proficient ALL Students	05 Enroll	05 # (of total) not Proficient ALL Students	06 Enroll	06 # (of tested) not Proficient ALL students	07 Enroll	07 # (of tested) not Proficient All Students
Grinnell-Newburg CSD	132	27	131	18	144	27	120	11
Griswold CSD	45	15	54	6	41	13	40	less than 5
Grundy Center CSD	50	less than 5	45	7	42	9	38	8
Guthrie Center CSD	47	9	36	11	44	9	41	less than 5
Guttenberg CSD	23	7	22	5		less than 5		less than 5
Hamburg CSD	17	less than 5	28	8	15	5	18	6
Hampton-Dumont CSD	99	34	74	16	76	23	92	14
Harlan CSD	93	15	100	21	111	17	86	11
Harmony CSD	25	5	22	less than 5	23	8	27	6
Harris-Lake Park CSD	23	less than 5	18	less than 5	23	less than 5	16	less than 5
Hartley-Melvin-Sanborn	47	8	49	9	44	10	62	8
Highland CSD	46	19	49	10	39	15	62	20
Hinton CSD	38	9	37	7	54	7	43	12
H-L-V CSD	26	6	23	Less than 5	27	8	26	5
Howard-Winneshiek	85	26	82	18	91	23	88	16
Hubbard-Radcliffe CSD	34	9	27	5	37	9	20	less than 5
Hudson CSD	69	17	55	14	55	8	58	9
Humboldt CSD	78	10	65	5	90	23	93	12
IKM CSD	21	less than 5	23	less than 5	22	7	29	8
Independence CSD	103	16	96	18	95	22	90	15
Indianola CSD	219	27	230	22	254	39	225	28
Interstate 35 CSD	54	10	58	12	74	12	71	12
Iowa City CSD	811	188	801	170	820	200	840	201
Iowa Falls CSD	66	15	83	13	94	23	82	14
Iowa Valley CSD	46	9	49	9	58	15	48	9
Janesville Consolidated	32	10	19	less than 5	24	9	21	less than 5
Jefferson-Scranton CSD	88	19	76	9	71	9	80	12
Jesup CSD	60	18	60	15	71	18	56	14
Johnston CSD	336	40	349	23	392	54	458	38
Keokuk CSD	156	39	154	33	155	39	169	50
Keota CSD	22	less than 5	24	less than 5	20	less than 5	23	5
Kingsley-Pierson CSD	31	5	40	less than 5	36	5	29	8
Knoxville CSD	155	40	129	22	154	34	137	25
Lake Mills CSD	51	9	45	7	45	6	53	8
Lamoni CSD	25	6	22	6	34	10	27	less than 5

Source: Iowa Department of Education, Adequate Yearly Progress (AYP files)

## NUMBER NOT PROFICIENT ON IOWA TESTS OF BASIC SKILLS 2004-2007

District Name	04 Enroll	04 # (of tested) not Proficient ALL Students	05 Enroll	05 # (of total) not Proficient ALL Students	06 Enroll	06 # (of tested) not Proficient ALL students	07 Enroll	07 # (of tested) not Proficient All Students
Laurens-Marathon CSD	23	5	32	6	26	8	21	7
Lawton-Bronson CSD	48	less than 5	40	10	36	7	36	less than 5
Le Mars CSD	156	30	169	26	158	42	195	31
Lenox CSD	24	8	34	12	22	10	25	5
Lewis Central CSD	191	75	191	59	193	69	227	73
Lineville-Clio CSD	6	less than 5	less than 5	less than 5	1	less than 5	5	less than 5
Linn-Mar CSD	368	55	414	52	358	36	469	60
Lisbon CSD	38	9	48	11	45	13	54	15
Logan-Magnolia CSD	52	less than 5	60	10	53	less than 5	44	less than 5
Lone Tree CSD	25	6	43	9	36	10	38	less than 5
Louisa-Muscatine CSD	76	23	70	21	61	28	60	18
Luverne CSD		less than 5		less than 5		less than 5		less than 5
Lynnvile-Sully CSD	40	9	36	9	39	10	31	less than 5
Madrid CSD	45	5	44	5	48	11	48	14
Malvern CSD	30	7	41	10	24	less than 5	29	7
Manning CSD	37	7	37	less than 5	30	less than 5	36	less than 5
Manson Northwest Webster CSD	57	22	37	6	59	13	35	8
Maple Valley CSD	38	13	31	less than 5	35	6	34	5
Maquoketa CSD	101	28	88	15	99	19	96	18
Maquoketa Valley CSD	67	15	61	less than 5	61	6	54	9
Marcus-Meriden-Cleghorn CSD	43	12	50	less than 5	29	less than 5	37	less than 5
Marion Independent Sch District	111	13	158	30	122	29	143	26
Marshalltown CSD	378	142	376	137	365	134	345	109
Martensdale-St Marys	38	9	34	10	29	7	39	11
Mason City CSD	323	76	303	74	303	80	266	65
Mediapolis CSD	75	11	68	5	62	6	62	13
Melcher-Dallas CSD	19	less than 5	36	14	25	9	23	less than 5
Meservey-Thornton	8	less than 5	13	6		less than 5		less than 5
MFL MarMac CSD	67	18	59	5	52	13	60	14
Midland CSD	38	10	36	12	30	7	44	5
Mid-Prairie CSD	85	18	87	17	98	25	84	16
Missouri Valley CSD	56	19	64	16	57	16	52	14
MOC-Floyd Valley	95	7	88	8	95	8	79	less than 5
Montezuma CSD	50	7	28	8	41	5	31	less than 5
Monticello CSD	69	16	65	9	63	13	71	9

Source: Iowa Department of Education, Adequate Yearly Progress (AYP files)

## NUMBER NOT PROFICIENT ON IOWA TESTS OF BASIC SKILLS 2004-2007

District Name	04 Enroll	04 # (of tested) not Proficient ALL Students	05 Enroll	05 # (of total) not Proficient ALL Students	06 Enroll	06 # (of tested) not Proficient ALL students	07 Enroll	07 # (of tested) not Proficient All Students
Moravia CSD	24	less than 5	24	less than 5	27	less than 5	17	less than 5
Mormon Trail CSD	23	less than 5	17	less than 5	13	5	18	8
Morning Sun CSD	16	less than 5	17	less than 5	16	less than 5	22	less than 5
Moulton-Udell CSD	19	less than 5	24	less than 5	16	less than 5	13	less than 5
Mount Ayr CSD	44	8	48	9	47	5	48	less than 5
Mount Pleasant CSD	167	34	167	28	149	30	160	24
Mount Vernon CSD	79	19	78	11	81	14	74	6
Murray CSD	21	6	28	less than 5	28	8	21	less than 5
Muscatine CSD	399	61	391	45	388	45	373	50
Nashua-Plainfield CSD	60	15	57	7	55	10	59	14
Nevada CSD	104	17	103	18	84	15	105	17
New Hampton CSD	79	12	61	9	75	12	59	5
New London CSD	32	13	39	19	36	12	35	less than 5
New Market CSD	7	less than 5	13	7	less than 5	less than 5	13	less than 5
Newell-Fonda CSD	25	5	29	6	25	less than 5	33	9
Newton CSD	229	62	233	56	227	50	216	41
Nishna Valley CSD	26	5	23	6	16	less than 5	13	less than 5
Nodaway Valley CSD	57	12	60	16	42	12	53	19
Nora Springs-Rock Falls	36	less than 5	30	less than 5	31	9	25	6
North Cedar CSD	76	19	68	14	70	12	64	13
North Central CSD	29	less than 5	51	13	41	7	39	9
North Fayette CSD	77	17	63	8	57	8	65	6
North Iowa CSD	33	11	46	6	44	8	36	11
North Kossuth CSD	19	less than 5	18	less than 5	19	less than 5	12	6
North Linn CSD	58	13	54	13	45	13	51	less than 5
North Mahaska CSD	39	5	41	7	46	8	38	9
North Polk CSD	74	12	81	12	88	16	83	6
North Scott CSD	198	30	198	12	207	43	230	30
North Tama County	34	7	40	8	33	6	47	9
North Winneshiek CSD	21	10	24	9	19	9	17	less than 5
Northeast CSD	46	9	48	12	51	9	43	less than 5
Northeast Hamilton	16	less than 5	23	less than 5	22	5	21	less than 5
Northwood-Kensett	38	12	41	7	33	6	28	less than 5
Norwalk CSD	144	27	184	40	182	28	176	28
Odebolt-Arthur CSD	19	less than 5	28	less than 5	33	7	25	less than 5

Source: Iowa Department of Education, Adequate Yearly Progress (AYP files)

## NUMBER NOT PROFICIENT ON IOWA TESTS OF BASIC SKILLS 2004-2007

District Name	04 Enroll	04 # (of tested) not Proficient ALL Students	05 Enroll	05 # (of total) not Proficient ALL Students	06 Enroll	06 # (of tested) not Proficient ALL students	07 Enroll	07 # (of tested) not Proficient All Students
Oelwein CSD	89	39	91	14	82	22	98	13
Ogden CSD	61	7	55	6	58	10	50	7
Okoboji CSD	55	12	59	13	55	13	61	5
Olin Consolidated School District	16	less than 5	17	less than 5	11	less than 5	11	less than 5
Orient-Macksburg	21	7	15	less than 5	12	less than 5	8	less than 5
Osage CSD	76	15	43	6	67	less than 5	60	14
Oskaloosa CSD	167	45	165	41	176	37	164	32
Ottumwa CSD	336	123	339	95	350	109	344	89
Panorama CSD	43	less than 5	53	less than 5	67	13	54	5
Parkersburg CSD	40	15		less than 5		less than 5		less than 5
Paton-Churdan CSD	16	less than 5	12	less than 5	7	less than 5	15	less than 5
PCM CSD	94	18	66	9	69	12	86	13
Pekin CSD	62	14	49	13	52	5	49	6
Pella CSD	153	17	164	9	145	10	150	15
Perry CSD	131	68	126	39	129	35	127	19
Pleasant Valley CSD	228	39	222	20	255	31	250	35
Pleasantville CSD	49	5	42	less than 5	42	7	37	5
Pocahontas Area	29	8	31	6	31	less than 5	26	less than 5
Pomeroy-Palmer	15	less than 5	19	less than 5	12	less than 5	16	5
Postville CSD	39	13	28	5	42	21	41	12
Prairie Valley CSD	70	14	57	less than 5	52	12	52	8
Prescott CSD	9	less than 5	less than 5	less than 5	7	less than 5	5	less than 5
Preston CSD	23	less than 5	20	less than 5	20	less than 5	31	6
Red Oak CSD	86	28	112	28	102	30	82	23
Remsen-Union CSD	22	less than 5	27	less than 5	32	less than 5	25	5
Riceville CSD	24	less than 5	24	less than 5	22	7	32	8
River Valley CSD	35	6	26	8	32	6	25	less than 5
Riverside CSD	47	12	40	6	44	6	47	less than 5
Rock Valley CSD	52	10	40	7	40	less than 5	50	9
Rockwell City-Lytton	36	5	45	11	31	5	38	7
Rockwell-Swaledale	31	13	29	6	26	9	24	less than 5
Roland-Story CSD	74	9	88	16	72	11	70	5
Rudd-Rockford-Marble Rk CSD	42	12	32	less than 5	30	less than 5	37	5
Russell CSD	14	8	14	7	15	7	5	less than 5
Ruthven-Ayrshire	14	less than 5	15	less than 5	10	less than 5	15	less than 5

Source: Iowa Department of Education, Adequate Yearly Progress (AYP files)

## NUMBER NOT PROFICIENT ON IOWA TESTS OF BASIC SKILLS 2004-2007

District Name	04 Enroll	04 # (of tested) not Proficient ALL Students	05 Enroll	05 # (of total) not Proficient ALL Students	06 Enroll	06 # (of tested) not Proficient ALL students	07 Enroll	07 # (of tested) not Proficient All Students
Sac CSD	34	5	28	6	41	16	33	7
St Ansgar CSD	46	6	59	10	59	10	45	12
Saydel CSD	86	27	87	28	94	27	114	37
Schaller-Crestland	35	7	23	5	35	10	30	7
Schleswig CSD	15	less than 5	21	less than 5	20	less than 5	26	less than 5
Sentral CSD	16	7	12	less than 5	15	less than 5	12	less than 5
Sergeant Bluff-Luton	109	19	115	19	100	15	112	15
Seymour CSD	21	9	23	6	17	9	17	less than 5
Sheffield-Chapin	25	5	23	less than 5	32	less than 5	29	less than 5
Sheldon CSD	53	8	66	10	70	7	76	12
Shenandoah CSD	81	19	97	36	75	19	78	12
Sibley-Ocheyedan CSD	59	5	48	9	54	less than 5	55	9
Sidney CSD	24	6	29	less than 5	18	7	25	10
Sigourney CSD	45	12	44	9	41	11	41	10
Sioux Center CSD	65	14	69	8	65	9	83	11
Sioux Central CSD	35	8	26	6	36	6	31	less than 5
Sioux City	1037	364	990	318	982	295	975	292
Solon CSD	77	13	87	9	118	24	90	7
South Clay CSD	10	less than 5	5	less than 5	11	less than 5	9	less than 5
South Hamilton CSD	43	6	49	8	46	8	62	8
South O'Brien CSD	41	7	50	11	47	13	50	5
South Page CSD	18	less than 5	15	less than 5	12	less than 5	15	less than 5
South Tama County CSD	121	30	124	46	112	33	127	40
South Winneshiek CSD	36	7	39	5	33	6	32	less than 5
Southeast Polk CSD	385	87	351	52	405	85	421	63
Southeast Warren CSD	37	9	33	9	40	5	36	5
Southeast Webster CSD	52	30	43	11	48	17	34	less than 5
Southern Cal CSD	43	11	34	5	27	less than 5	44	6
Spencer CSD	135	33	138	20	129	24	115	23
Spirit Lake CSD	98	20	88	9	87	16	97	14
Springville CSD	32	11	35	8	34	9	34	5
Stanton CSD	22	less than 5	19	less than 5	18	less than 5	16	less than 5
Starmont CSD	55	14	63	17	39	less than 5	47	less than 5
Storm Lake CSD	136	52	129	46	108	46	138	50
Stratford CSD	10	less than 5	16	less than 5	12	less than 5	11	less than 5

Source: Iowa Department of Education, Adequate Yearly Progress (AYP files)

## NUMBER NOT PROFICIENT ON IOWA TESTS OF BASIC SKILLS 2004-2007

District Name	04 Enroll	04 # (of tested) not Proficient ALL Students	05 Enroll	05 # (of total) not Proficient ALL Students	06 Enroll	06 # (of tested) not Proficient ALL students	07 Enroll	07 # (of tested) not Proficient All Students
Sumner CSD	45	15	45	11	37	less than 5	45	12
Terril CSD	6	less than 5	9	less than 5	12	less than 5	8	less than 5
Tipton CSD	50	8	47	8	65	10	49	13
Titonka Consolidated Sch District	22	5	14	less than 5	14	less than 5	12	less than 5
Treynor CSD	37	6	55	8	52	7	51	6
Tri-Center CSD	61	8	62	12	61	25	54	9
Tri-County CSD	18	6	24	5	26	7	18	7
Tripoli CSD	38	8	37	less than 5	30	less than 5	34	5
Turkey Valley CSD	47	5	35	10	30	6	37	less than 5
Twin Cedars CSD	50	11	42	8	49	13	26	5
Twin Rivers CSD	11	less than 5	15	less than 5		less than 5		less than 5
Underwood CSD	53	14	68	12	57	8	43	6
Union CSD	104	15	96	12	97	15	102	17
United CSD	24	7	13	5	22	8	25	less than 5
Urbandale CSD	241	41	237	21	235	32	260	35
Valley CSD	45	13	50	10	33	8	43	13
Van Buren CSD	54	9	40	12	51	7	54	less than 5
Van Meter CSD	40	5	38	7	44	7	54	5
Ventura CSD	22	5	30	less than 5	25	less than 5	26	less than 5
Villisca CSD	24	9	31	5	23	9	29	7
Vinton-Shellsburg CSD	129	28	137	37	114	17	106	24
Waco CSD	29	5	34	5	40	8	28	5
Wall Lake View Auburn	53	11	30	9	45	14	36	8
Walnut CSD	24	11	11	less than 5	17	less than 5	15	less than 5
Wapello CSD	55	13	66	17	62	12	50	less than 5
Wapsie Valley CSD	57	15	51	10	54	12	45	14
Washington CSD	111	29	115	37	130	44	121	31
Waterloo CSD	783	322	713	297	774	296	804	272
Waukee CSD	290	37	350	36	422	36	412	40
Waverly-Shell Rock	135	17	122	14	145	27	109	10
Wayne CSD	43	8	39	13	45	8	34	6
Webster City CSD	119	27	108	19	120	18	118	18
West Bend-Mallard CSD	21	less than 5	21	less than 5	18	less than 5	17	less than 5
West Branch CSD	54	8	63	12	67	19	48	less than 5
West Burlington Ind Schl District	54	16	48	9	55	19	50	16

Source: Iowa Department of Education, Adequate Yearly Progress (AYP files)

## NUMBER NOT PROFICIENT ON IOWA TESTS OF BASIC SKILLS 2004-2007

District Name	04 Enroll	04 # (of tested) not Proficient ALL Students	05 Enroll	05 # (of total) not Proficient ALL Students	06 Enroll	06 # (of tested) not Proficient ALL students	07 Enroll	07 # (of tested) not Proficient All Students
West Central CSD	24	5	22	less than 5	26	less than 5	18	less than 5
West Central Valley	75	22	53	10	79	24	68	14
West Delaware County	99	16	92	21	80	22	89	15
West Des Moines CSD	689	112	636	94	642	88	670	99
West Hancock CSD	57	16	40	9	49	13	44	9
West Harrison CSD	28	less than 5	36	11	43	24	34	less than 5
West Liberty CSD	65	18	85	22	91	33	67	25
West Lyon CSD	64	9	51	7	47	16	47	less than 5
West Marshall CSD	67	13	74	7	56	11	53	7
West Monona CSD	56	14	55	14	50	13	48	17
West Sioux CSD	41	17	38	5	37	14	44	12
Western Dubuque CSD	132	26	189	40	186	43	183	35
Westwood CSD	53	18	53	12	34	13	39	7
Whiting CSD	10	less than 5	14	less than 5	18	less than 5	19	less than 5
Williamsburg CSD	81	10	58	less than 5	90	10	69	less than 5
Wilton CSD	69	16	65	19	57	8	51	10
Winfield-Mt Union CSD	28	6	26	5	27	6	27	8
Winterset CSD	111	26	102	17	127	28	140	27
Woden-Crystal Lake	9	less than 5	12	5	6	less than 5	8	less than 5
Woodbine CSD	36	8	33	7	41	8	21	less than 5
Woodbury Central CSD	49	10	53	6	58	8	40	less than 5
Woodward-Granger CSD	32	11	40	less than 5	43	16	54	11
<b>State Totals</b>	<b>34,391</b>	<b>8,476</b>	<b>33,697</b>	<b>7,194</b>	<b>33,827</b>	<b>7,876</b>	<b>34,006</b>	<b>6,937</b>

Source: Iowa Department of Education, Adequate Yearly Progress (AYP files)