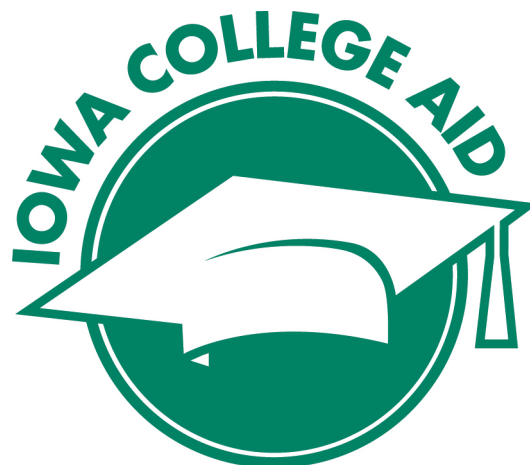


Iowa College Student Aid Commission

# Student and Faculty Diversity Report

March, 2016



**IowaCollegeAid.gov**  
**Because College Changes Everything**

## Executive Summary

The Iowa College Student Aid Commission annual Student and Faculty Ethnic Diversity Report summarizes trends in representation by minority population groups among students, faculty, and state financial aid recipients at Iowa colleges and universities. The report has been published each year since 1992 and is provided to the Governor and General Assembly of Iowa as directed by Iowa Code §261.2 (Duties of commission). The report is based on an annual survey of Iowa college and university officials. The Commission and staff are grateful for the assistance of college and university staff who contributed the information compiled for this report.

Findings of the 2016 report include the following:

- In the fall of 2015, 36,581 minority students were enrolled at Iowa colleges and universities.
- Enrollment of racial and ethnic minority students in Iowa's colleges and universities has increased steadily since 1992, when the Ethnic Diversity Survey was first conducted. Between fall 1992 and fall 2015, enrollment of racial and ethnic minority students in Iowa's colleges and universities more than tripled.
- In the fall of 2015, racial and ethnic minorities represented 16.1% of enrollment in Iowa colleges and universities. Of those 10.1% were Iowa residents.
- Of Iowa-resident minority students attending college in Iowa during the previous academic year (2014-15), 10.4% were awarded an Iowa Grant, Iowa Tuition Grant, Iowa Vocational-Technical Tuition Grant, or All Iowa Opportunity Scholarship.

Please note that some apparent trends reported in this report partly reflect changes in agency methods of counting students and faculty by race/ethnicity implemented in the fall of 2010. Methods for collecting the data in this report are described under Report Background. The numbers reported only reflect self reported race and ethnicity to the institutions, therefore data represented in this report will not match total enrollment data on various other reports.

For this report, minority students and faculty include those from the following population groups: Hispanic or Latino; American Indian or Alaska Native; Asian; Black or African American; Native Hawaiian or other Pacific Islander; two or more races/ethnicities.

Detailed data tables are provided as attached exhibits.

## Contents

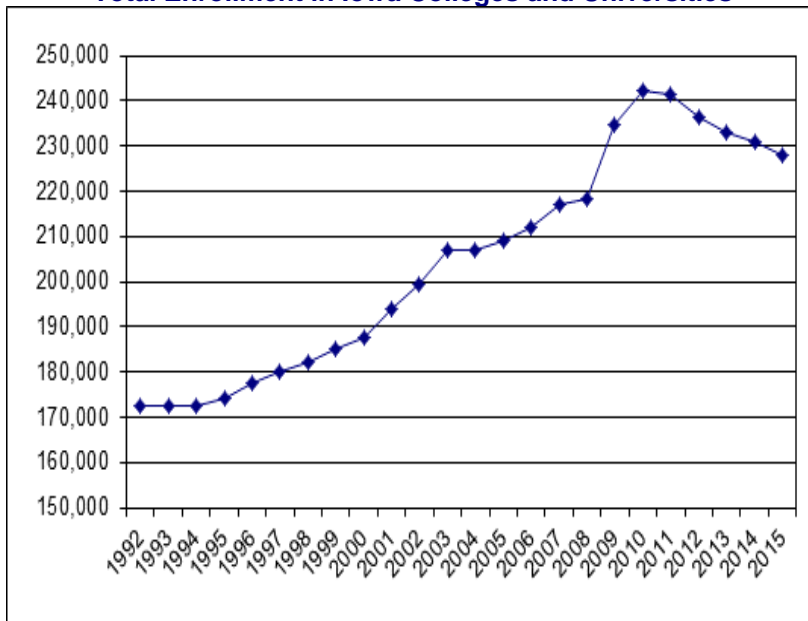
<b>Executive Summary .....</b>	<b>2</b>
<b>Postsecondary Enrollment 1992 - 2015 .....</b>	<b>3-4</b>
<b>Minority Participation in State-Appropriated Student Financial Aid Programs .....</b>	<b>5</b>
<b>Faculty Ethnic Diversity .....</b>	<b>6</b>
<b>Report Background.....</b>	<b>7</b>
<b>References.....</b>	<b>8</b>
<b>Exhibits .....</b>	<b>9</b>

## Postsecondary Enrollment 1992 - 2015

In the fall of 2015, a total of 227,983 full- and part-time graduate and undergraduate students were enrolled in Iowa postsecondary institutions, including Regent universities, independent four-year colleges and universities, community colleges, proprietary colleges, and specialized graduate medical schools. Note that this figure represents enrollment at Iowa degree-granting institutions, which annually report student ethnic diversity data to the Iowa College Student Aid Commission.

Total enrollment in Iowa's colleges and universities increased steadily until 2011. In the fall of 1992, the first year of the Ethnic Diversity Report, full-time and part-time enrollment in Iowa was 172,435. Between 1992 and 2015, total enrollment expanded 32.0%.

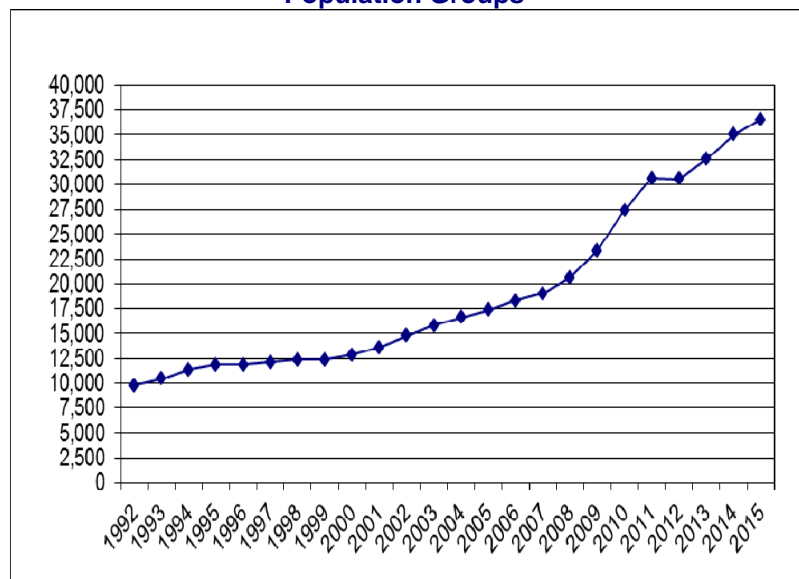
**Total Enrollment in Iowa Colleges and Universities**



Total enrollments include full- and part-time undergraduate, graduate, and professional students.

Overall enrollment of racial and ethnic minority students in Iowa's colleges and universities has also increased since 1992. In 1992, Iowa colleges and universities enrolled 9,744 students from racial or ethnic minority groups; in 2015, this figure was 36,581—an increase over 250%. In 2011 total enrollment began to decrease in Iowa colleges and universities, largely due to the economic recovery but enrollment for minority groups increased over 7.6%. In the years between 1992 and 2015, the total population of Iowa increased by 305,498—from 2.81 million to 3.12 million. In the years between 2000 and 2014 growth of minority students in Iowa college and universities has outpaced total population growth by over a 100%.

**Enrollment by Students from Racial and Ethnic Minority Population Groups**

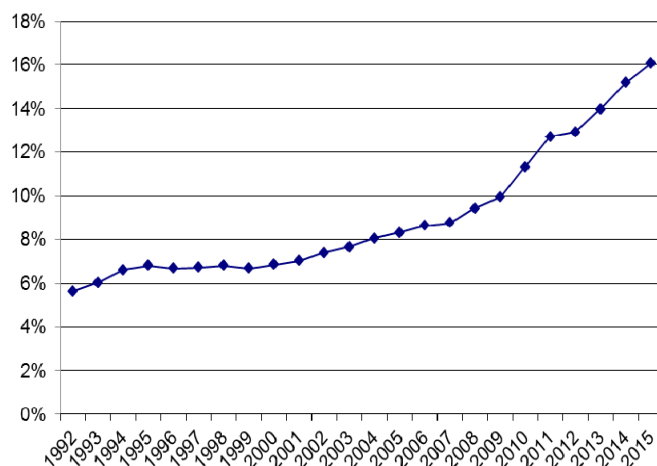


Enrollments include full- and part-time undergraduate, graduate and professional students.

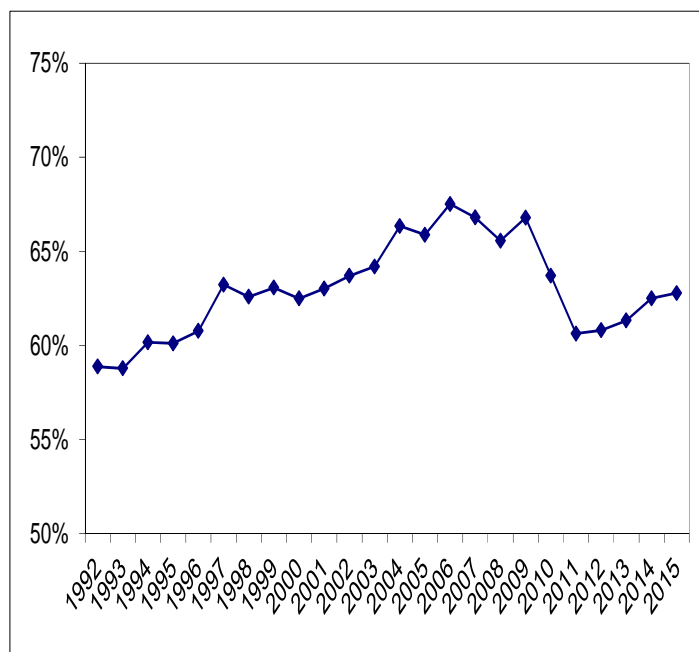
Between 1992 and 2015, total enrollment in Iowa colleges and universities increased by over 55,000 students, from 172,435 to 227,983 and the percentage of total enrollment represented by racial and ethnic minorities in Iowa's colleges and universities expanded from 5.7% to 16.1%. Growth in minority enrollment between 1992 and 2015 significantly outpaced overall enrollment growth during these two decades. Between 1992 and 2015, total enrollment grew by 32.2%, while enrollment of racial and ethnic minority students increased over 250%. As a percentage of total enrollments, minority enrollment began its steady expansion in the early 2000s. A little over half of total minority students enrolled in Iowa colleges and universities are Iowa residents.

### Minority Enrollment as a Percentage of Total Enrollment in Iowa Colleges and Universities: Percent of Total Enrollments 1992-2015

Enrollments include full- and part-time undergraduate, graduate, and professional students.

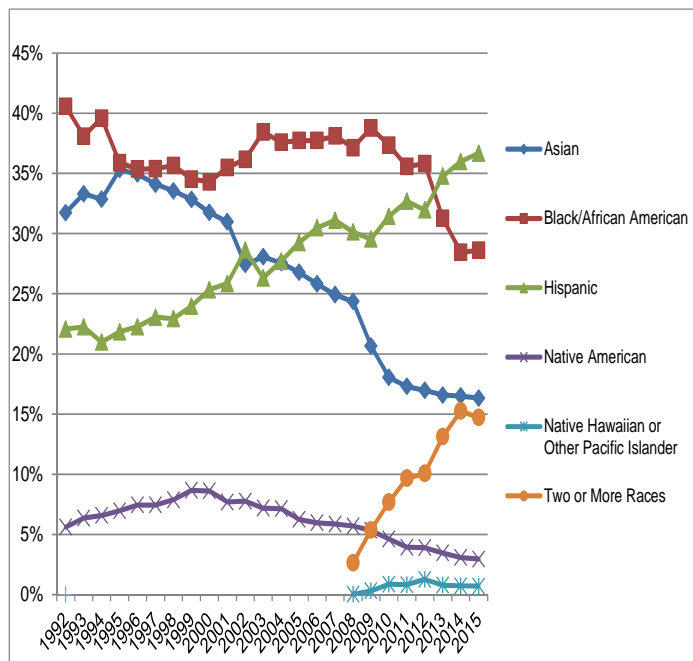


### Iowa-Resident Minority Students at Iowa Colleges and Universities: Percent of Total Minority Students 1992-2015



Enrollments include full- and part-time undergraduate, graduate, and professional students.

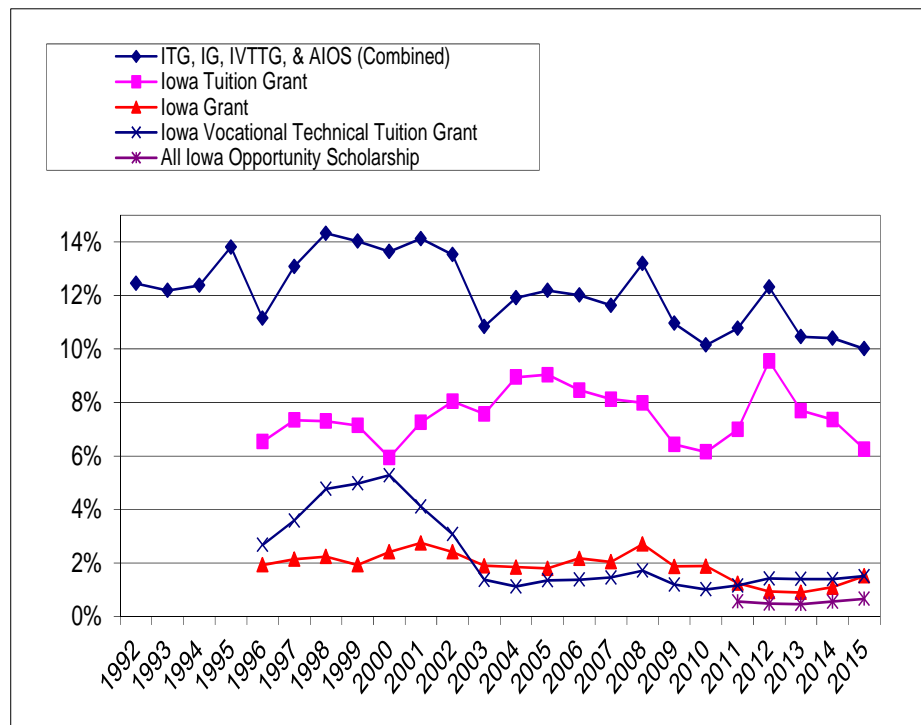
### Iowa-Resident Minority Students by Population Group: 1992-2015



Enrollments include full- and part-time undergraduate, graduate, and professional students.

## Minority Participation in State-Appropriated Student Financial Aid Programs

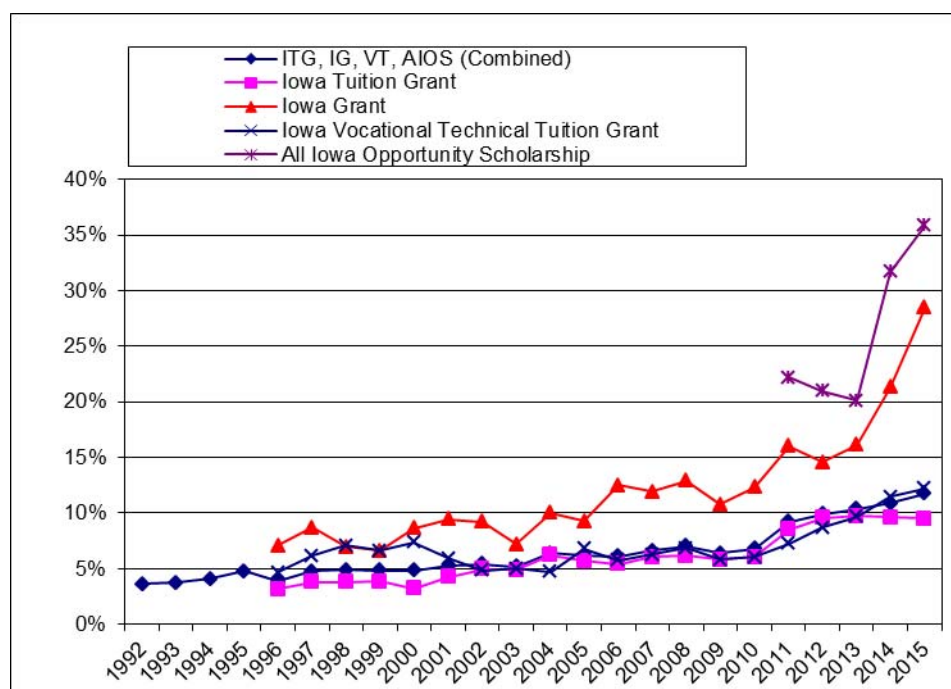
### Percent of Iowa Minority Students Receiving Grants and Scholarships



For the Student and Faculty Ethnic Diversity Report, Iowa institutions also report the race/ethnicity of recipients of state financial aid for four major state aid programs: Iowa Grants, Iowa Tuition Grants, Iowa Vocational-Technical Tuition Grants, and All Iowa Opportunity Scholarships.

In the 2014-2015 academic year, 11.8% of Iowa resident minority students attending college in Iowa were awarded one or more of these grants. The chart at left tracks the history, since 1992, of grant program participation by Iowa-resident minority students. Participation by program is reported beginning with the 1995-1996 academic year. Participation in the All Iowa Opportunity Grant program by race/ethnicity was reported for the first time in 2010-11.

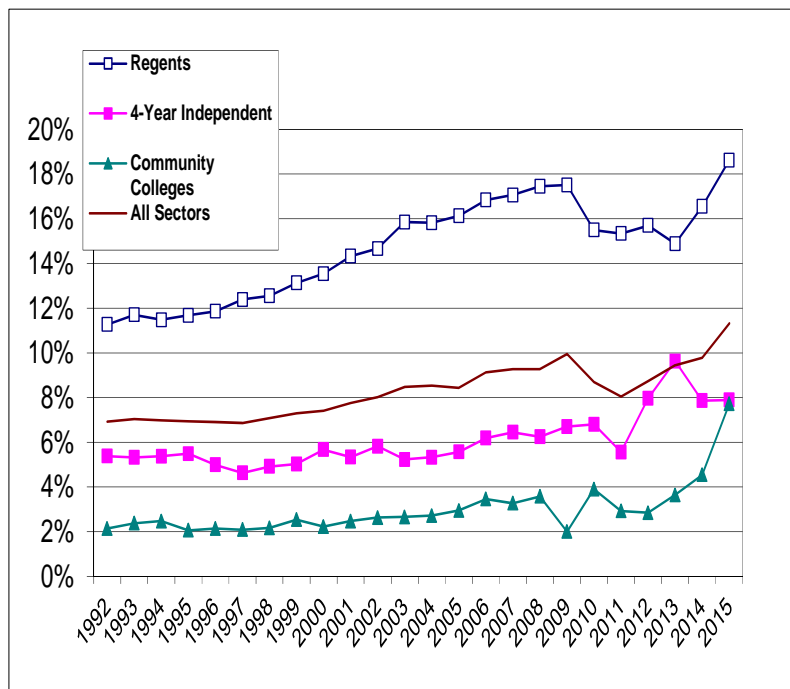
### Percent of Grants Awarded to Minority Students



The chart at left shows minority participation in these four state aid programs as a percentage of total participation. In the 2014-2015 academic year, 9.5% of Iowa Tuition Grants, 12.2% of Iowa Vocational-Technical Tuition Grants, 28.4% of Iowa Grants, and 35.8% of All Iowa Opportunity Scholarships were awarded to minority students.

### Minority Faculty as a Percentage of Total Faculty by Institutional Sector

In the fall of 2015, a total of 16,364 full and part-time faculties were part of teaching, research, or public service in Iowa colleges and universities. A total of 1,852 were faculty from minority population groups or 11.32%. Between 1992 and 2015 total faculty increased steadily with a slight peak between 2013 and 2015. The chart at the right represents minority faculty as a percentage of total faculty by sector.



## Report Background

Iowa Code §261.2 directs the Iowa College Student Aid Commission to collect data on racial and ethnic diversity at Iowa colleges and universities and to provide a report to the Governor and General Assembly of Iowa. The Commission collects this information by means of its annual Ethnic Diversity Survey, one of three principal surveys the Commission administers annually to Iowa postsecondary institutions.

Since it was first administered in 1992 until the fall of 2009, the content of the Commission's ethnic diversity survey remained essentially unchanged. During this period, the survey collected information about the representation of students and faculty from various minority population groups for both U.S. citizens and non-resident aliens. With the fall 2010 survey, the Commission's survey form implemented new race and ethnicity categories consistent with U.S. Department of Education guidelines for reporting race and ethnicity. In 2010, for the first time, the survey allowed institutions to report the (unduplicated headcount) number of students and faculty in the following race/ethnicity categories:

1. Non-Resident Alien
2. Race and Ethnicity Unknown
3. White

In previous years the ethnic diversity survey collected the race/ethnicity of non-resident aliens rather than treating "non-resident alien" as a separate and unique race/ethnicity category for reporting purposes. For this reason, apparent trends in minority representation are partly conflated with shifts attributable to this one-time change in methods of counting students and faculty by race/ethnicity.

The system used for reporting race and ethnicity data in the Commission's annual ethnic diversity survey is consistent with the U.S. Department of Education's guidance on reporting such data as it pertains to the Integrated Postsecondary Education Data System (IPEDS) (Federal Register, 2007). According to this guidance, when reporting race and ethnicity data, educational institutions report aggregated racial and ethnic data in the following seven categories:

### **Race and Ethnicity Categories Used for this Report**

1. Non-Resident Alien.
2. Race and Ethnicity Unknown.
3. Hispanic or Latino. A person of Cuban, Mexican, Puerto Rican, South or Central American, or other Spanish culture or origin, regardless of race.
4. The term "Spanish origin" can be used in addition to "Hispanic/Latino or Latino."
5. American Indian or Alaska Native. A person having origins in any of the original peoples of North and South America (including Central America), and who maintains a tribal affiliation or community attachment.
6. Asian. A person having origins in any of the original peoples of the Far East, Southeast Asia, or the Indian subcontinent including, for example, Cambodia, China, India, Japan, Korea, Malaysia, Pakistan, the Philippine Islands, Thailand, and Vietnam.
7. Black or African American. A person having origins in any of the Black racial groups of Africa.
8. Native Hawaiian or Other Pacific Islander. A person having origins in any of the original peoples of Hawaii, Guam, Samoa, or other Pacific Islands.
9. White. A person having origins in any of the original peoples of Europe, the Middle East, or North Africa.
10. Two or more races.

## References

Duties of commission, Iowa Code §261.25 (2011).

Federal Register 72:202 (Friday, October 19, 2007)  
<http://edocket.access.gpo.gov/2007/pdf/E7-20613.pdf>.

U. S. Census Bureau. (2014). American Community Survey. Washington, DC; Author.

For information about this report, contact:

Joe Dullard  
Statistical Research Analyst  
Iowa College Student Aid Commission  
430 E. Grand 3<sup>rd</sup> Floor  
Des Moines IA 50309  
[joe.dullard@iowa.gov](mailto:joe.dullard@iowa.gov)  
Phone: 515.725.3406



**Exhibits:**

- Exhibit 1 - Undergraduate Enrollment in Iowa Colleges and Universities by Race/Ethnicity
- Exhibit 2 - Graduate Enrollment in Iowa Colleges and Universities by Race/Ethnicity
- Exhibit 3 - Undergraduate Enrollment in Iowa Colleges and Universities by Race/Ethnicity - Iowa Residents
- Exhibit 4 - Graduate Enrollment in Iowa Colleges and Universities by Race/Ethnicity - Iowa Residents
- Exhibit 5 - Total Enrollment and Enrollment of Minority Population Groups
- Exhibit 6 - Total Enrollment and Enrollment of Minority Population Groups - Iowa Residents Only
- Exhibit 7 - State Financial Aid to Minority Students at Iowa Colleges and Universities - Awards in Four Major Programs\* in the 2012-2013 Academic Year
- Exhibit 8 - Faculty at Iowa Colleges and Universities



Exhibit 1  
Iowa College Student Aid Commission  
Student and Faculty Diversity Report  
Fall 2015  
Undergraduate Enrollment in Iowa Colleges and Universities by Race/Ethnicity  
Undergraduate (Full-time and Part-time)

		Non-Resident Alien	Race/Ethnicity Unknown	Hispanic or Latino	American Indian or Alaska Native	Asian	Black or African American	Native Hawaiian or Pacific Islander	White	Two or More Races/Ethnicities	Total Under-graduate
1 Regent Universities	Iowa State University	2,138	1,486	1,393	73	875	802	28	22,584	655	30,034
	University of Iowa	2,651	1,012	1,669	35	870	750	23	15,742	605	23,357
	University of Northern Iowa	481	293	350	16	115	287	7	8,407	213	10,169
2 Private Not-for-Profit,4-year	AIB College of Business	7	146	20	1	3	8	1	157	5	348
	Allen College	0	28	0	0	5	9	1	323	4	370
	Briar Cliff University	49	0	106	10	13	68	5	756	15	1,022
	Buena Vista University	81	144	81	12	26	27	3	1,579	25	1,978
	Central College	5	37	52	3	16	27	1	1,070	14	1,225
	Clarke University	8	7	61	0	6	33	0	735	18	868
	Coe College	39	50	123	1	47	83	2	1,010	43	1,398
	Cornell College	35	70	130	11	26	48	2	681	28	1,031
	Divine Word College	66	0	7	0	19	2	0	2	0	96
	Dordt College	133	92	3	1	10	23	0	1,119	2	1,383
	Drake University	251	30	128	5	112	123	1	2,621	67	3,338
	Emmaus Bible College	10	9	14	4	1	11	3	180	7	239
	Faith Baptist Bible College	0	15	2	2	2	3	1	213	4	242
	Graceland University	82	233	136	4	15	160	18	926	59	1,633
	Grand View University	39	172	77	4	48	158	0	1,361	62	1,921
	Grinnell College	259	55	125	2	125	96	0	961	82	1,705
	Iowa Wesleyan College	18	91	26	3	4	42	2	185	13	384
	Loras College	21	42	92	0	12	30	2	1,206	36	1,441
	Luther College	147	11	89	5	41	43	1	1,953	47	2,337
	Maharishi University of Management	138	1	28	2	11	25	2	137	9	353
	Mercy College of Health Sciences	0	10	25	1	24	48	0	669	12	789
	Morningside College	52	59	98	8	14	11	2	1,031	33	1,308
	Mount Mercy College	49	53	25	16	29	102	0	1,243	26	1,543
	Northwestern College	37	46	50	0	11	23	1	927	25	1,120
	Palmer College of Chiropractic	0	1	2	0	3	1	0	24	0	31
	Simpson College	6	74	48	4	24	32	1	1,409	25	1,623
	St Ambrose University	28	98	158	3	29	83	1	2,015	60	2,475
	University of Dubuque	58	107	161	7	43	253	3	1,151	59	1,842
	Upper Iowa University	481	110	206	19	63	761	8	2,812	69	4,529
	Wartburg College	125	55	40	0	18	72	1	1,190	36	1,537
	William Penn University	70	57	123	12	20	272	8	917	25	1,504
3 Private for-Profit,4-year	Ashford University	44	4	53	2	3	69	3	222	6	406
	Hamilton Technical College	0	0	16	0	1	16	0	108	6	147
	ITT Technical Institute-Clive	0	11	12	0	4	20	0	96	4	147
	Kaplan University - Cedar Falls	0	0	8	1	1	14	0	204	0	228
	Kaplan University - Cedar Rapids	0	8	18	4	4	21	2	268	0	325
	Kaplan University - Davenport	0	42	21	2	2	38	0	194	0	299
	Kaplan University - Des Moines	0	81	27	4	5	30	1	379	0	527
	Kaplan University - Mason City	0	54	10	1	0	4	0	101	0	170
4 Community Colleges	Waldorf College	36	67	156	11	29	292	6	1,226	29	1,852
	Des Moines Area Community College	213	1,198	1,503	82	750	1,272	16	16,807	457	22,298
	Eastern Iowa Community College	41	486	767	25	156	470	16	6,187	235	8,383
	Hawkeye Community College	18	0	190	11	82	482	10	4,464	114	5,371
	Indian Hills Community College	168	298	232	17	50	304	3	3,633	68	4,773
	Iowa Central Community College	70	306	444	34	77	513	12	4,106	72	5,634
	Iowa Lakes Community College	0	45	114	17	35	102	3	2,048	7	2,371
	Iowa Valley -- Ellsworth Community College	13	62	49	11	7	134	7	590	25	898
	Iowa Valley -- Marshalltown Community College	58	176	309	53	63	67	2	1,284	24	2,036
	Iowa Western Community College	107	382	340	93	114	613	15	3,292	1	4,957
	Kirkwood Community College	401	783	678	69	274	1,511	17	10,704	377	14,814
	North Iowa Area Community College	38	3	122	10	36	119	1	2,587	31	2,947
	Northeast Iowa Community College	3	98	83	13	19	114	10	4,505	20	4,865
	Northwest Iowa Community College	1	81	88	17	25	11	2	1,370	17	1,612
	Southeastern Community College	29	112	126	28	33	131	2	2,342	65	2,868
	Southwestern Community College	15	8	101	6	9	53	0	1,428	36	1,656
	Western Iowa Tech Community College	43	669	929	104	144	206	12	3,943	102	6,152
5 Private Not-for-Profit,2-year	St Lukes College	0	0	17	2	6	8	0	201	4	238
6 Private for-Profit, 2-year	Capri College-Cedar Rapids	0	0	9	0	1	10	1	129	2	152
	Capri College-Davenport	0	0	16	0	4	10	0	120	2	152
	Capri College-Dubuque	0	3	7	0	0	10	1	166	1	188
	EQ School of Hair Design	0	0	0	0	0	2	0	10	0	12
	Faust Institution of Cosmetology-Spirit lake	0	0	2	0	0	1	0	12	0	15
	Faust Institution of Cosmetology-Storm Lake	0	0	1	0	1	0	0	10	0	12
	Iowa School of Beauty-Marshalltown	0	0	5	3	1	1	0	15	0	25
	Iowa School of Beauty-Ottumwa	0	0	1	0	0	2	0	32	0	35
	Iowa School of Beauty-Sioux City	0	0	6	1	3	0	0	13	0	23
	La James International College-Cedar Falls	0	3	0	0	1	8	1	25	1	39
	La James International College-Davenport	0	4	5	0	0	20	0	48	0	77
	La James International College-Des Moines	0	0	3	0	0	7	0	18	0	28
	La James International College-Fort Dodge	0	1	1	0	0	3	0	45	1	51
	La James International College-Iowa City	0	10	0	0	1	13	0	23	4	51
	La James International College-Johnston	0	4	8	0	1	13	0	70	1	97
	Vatterott College	0	14	3	0	3	20	0	96	0	136
Totals		8,862	9,707	12,128	885	4,625	11,250	271	150,417	4,095	202,240



		Non-Resident Alien	Race/Ethnicity Unknown	Hispanic or Latino	American Indian or Alaska Native	Asian	Black or African American	Native Hawaiian or Pacific Islander	White	Two or More Races/Ethnicities	Total Graduate
1 Regent Universities	Iowa State University	1,899	236	154	16	111	139	7	2,493	41	5,096
	University of Iowa	1,469	1025	331	16	378	211	5	4,909	449	8,793
	University of Northern Iowa	135	81	29	6	18	65	0	1,461	17	1,812
2 Private Not-for-Profit,4-year	AIB College of Business	0	0	0	0	0	0	0	0	0	0
	Allen College	2	11	2	0	0	6	0	218	2	241
	Briar Cliff University	1	0	8	1	2	7	0	106	2	127
	Buena Vista University	0	44	7	3	2	8	0	280	0	344
	Central College	0	0	0	0	0	0	0	0	0	0
	Clarke University	1	6	1	0	3	0	0	195	1	207
	Coe College	0	0	0	0	0	0	0	0	0	0
	Cornell College	0	0	0	0	0	0	0	0	0	0
	Divine Word College	0	0	0	0	0	0	0	0	0	0
	Dordt College	7	1	1	0	0	0	0	64	0	73
	Drake University	24	28	42	3	56	53	0	1,421	26	1,653
	Emmaus Bible College	0	0	0	0	0	0	0	0	0	0
	Faith Baptist Bible College	0	2	0	0	1	2	0	34	1	40
	Graceland University	7	109	22	6	14	26	3	564	13	764
	Grand View University	0	2	3	0	1	5	0	56	0	67
	Grinnell College	0	0	0	0	0	0	0	0	0	0
	Iowa Wesleyan College	0	0	0	0	0	0	0	1	0	1
	Loras College	0	1	2	0	1	0	0	62	0	66
	Luther College	0	0	0	0	0	0	0	0	0	0
	Maharishi University of Management	982	15	8	0	12	69	0	85	6	1,177
	Mercy College of Health Sciences	0	0	0	0	0	0	0	0	0	0
	Morningside College	1	154	31	2	7	4	2	1,286	3	1,490
	Mount Mercy College	6	13	2	3	6	24	1	269	10	334
	Northwestern College	1	4	1	0	1	0	0	83	0	90
	Palmer College of Chiropractic	0	2	29	9	61	17	1	836	14	969
	Simpson College	0	27	1	0	0	2	0	37	0	67
	St Ambrose University	20	40	31	1	16	19	2	631	8	768
	University of Dubuque	38	46	5	2	2	12	1	228	3	337
	Upper Iowa University	17	16	29	3	10	78	4	523	6	686
	Wartburg College	0	0	0	0	0	0	0	0	0	0
	William Penn University	5	2	6	0	4	11	0	58	0	86
3 Private for-Profit,4-year	Ashford University	0	0	0	0	0	0	0	0	0	0
	Kaplan University - Cedar Falls	0	0	1	1	1	4	0	32	0	39
	Kaplan University - Cedar Rapids	0	3	1	1	1	6	0	31	0	43
	Kaplan University - Davenport	0	9	2	1	0	8	0	38	1	59
	Kaplan University - Des Moines	0	11	8	0	3	7	0	55	0	84
	Kaplan University - Mason City	0	6	1	0	0	1	0	14	0	22
	Waldorf College	0	6	5	1	6	45	0	145	0	208
Totals		4,615	1,900	763	75	717	829	26	16,215	603	25,743



Exhibit 3  
Iowa College Student Aid Commission  
Student and Faculty Diversity Report  
Fall 2015  
Undergraduate Enrollment in Iowa Colleges and Universities by Race/Ethnicity  
Undergraduate (Full-time and Part-time) Iowa Residents Only

		Non-Resident Alien	Race/Ethnicity Unknown	Hispanic or Latino	American Indian or Alaska Native	Asian	Black or African American	Native Hawaiian or Pacific Islander	White	Two or More Races/Ethnicities	Total Undergraduate
1 Regent Universities	Iowa State University	0	1,044	812	44	597	435	15	15,909	429	19,285
	University of Iowa	0	657	769	22	586	337	11	10,022	356	12,760
	University of Northern Iowa	24	273	288	15	98	208	6	8,004	194	9,110
2 Private Not-for-Profit,4-year	AIB College of Business	1	136	14	1	3	6	0	138	4	303
	Allen College	0	27	0	0	4	6	1	317	3	358
	Briar Cliff University	0	0	54	6	11	20	0	505	6	602
	Buena Vista University	0	133	66	12	23	15	3	1,412	19	1,683
	Central College	0	30	29	2	13	7	0	873	8	962
	Clarke University	0	6	10	0	5	8	0	430	7	466
	Coe College	0	32	17	0	5	11	1	584	18	668
	Cornell College	1	6	9	1	3	4	0	149	1	174
	Divine Word College	0	0	0	0	0	0	0	0	0	0
	Dordt College	5	29	1	0	4	3	0	481	0	523
	Drake University	8	23	32	0	38	28	0	796	21	946
	Emmaus Bible College	0	4	3	1	0	3	3	75	1	90
	Faith Baptist Bible College	0	3	0	0	1	2	0	84	1	91
	Graceland University	2	147	11	0	4	8	0	306	9	487
	Grand View University	0	157	56	4	44	99	0	1,201	44	1,605
	Grinnell College	1	10	8	0	8	3	0	137	6	173
	Iowa Wesleyan College	1	47	6	2	1	2	0	101	6	166
	Loras College	0	17	13	0	7	5	0	480	13	535
	Luther College	0	2	17	1	10	4	0	658	9	701
	Maharishi University of Management	0	0	2	0	2	1	0	35	2	42
	Mercy College of Health Sciences	0	9	25	1	24	47	0	655	12	773
	Morningside College	3	48	49	4	9	3	1	668	23	808
	Mount Mercy College	0	48	24	10	27	70	0	1,169	21	1,369
	Northwestern College	0	24	15	0	5	0	0	546	7	600
	Palmer College of Chiropractic	0	0	0	0	0	0	0	9	0	9
	Simpson College	0	65	29	3	21	20	1	1,210	18	1,367
	St Ambrose University	9	57	46	2	14	27	1	846	22	1,024
	University of Dubuque	0	56	36	3	12	45	0	628	23	803
	Upper Iowa University	2	43	38	2	14	69	3	1,496	22	1,689
	Wartburg College	0	38	15	0	12	20	0	917	21	1,023
	William Penn University	1	25	51	7	9	52	1	725	16	887
3 Private for-Profit,4-year	Ashford University	44	1	10	0	1	13	2	86	2	159
	Hamilton Technical College	0	0	9	0	0	10	0	67	4	90
	ITT Technical Institute–Clive	0	11	12	0	3	18	0	94	4	142
	Kaplan University - Cedar Falls	0	0	8	1	1	14	0	199	0	223
	Kaplan University - Cedar Rapids	0	8	18	4	4	19	2	261	0	316
	Kaplan University - Davenport	0	21	8	2	2	19	0	118	0	170
	Kaplan University - Des Moines	0	78	25	4	5	29	1	375	0	517
	Kaplan University - Mason City	0	30	6	1	0	3	0	65	0	105
	Waldorf College	0	6	10	2	1	9	0	288	6	322
4 Community Colleges	Des Moines Area Community College	0	1,175	1,490	82	743	1,212	16	16,634	447	21,799
	Eastern Iowa Community College	0	455	645	20	133	346	14	5,485	210	7,308
	Hawkeye Community College	0	0	182	11	72	464	9	4,415	113	5,266
	Indian Hills Community College	0	284	211	16	49	195	0	3,409	61	4,225
	Iowa Central Community College	0	264	403	32	74	252	8	3,969	69	5,071
	Iowa Lakes Community College	0	32	76	11	28	29	0	1,852	7	2,035
	Iowa Valley -- Ellsworth Community College	0	56	30	7	4	46	5	505	16	669
	Iowa Valley -- Marshalltown Community College	0	145	290	52	42	46	2	1,258	20	1,855
	Iowa Western Community College	0	162	186	47	70	124	6	2,316	1	2,912
	Kirkwood Community College	34	759	613	66	262	1,259	14	10,196	342	13,545
	North Iowa Area Community College	0	2	105	9	33	76	1	2,478	29	2,733
	Northeast Iowa Community College	0	78	76	11	16	103	9	4,178	19	4,490
	Northwest Iowa Community College	1	63	81	16	16	8	2	1,269	16	1,472
	Southeastern Community College	0	101	97	23	27	106	2	2,007	58	2,421
	Southwestern Community College	0	4	78	6	8	17	0	1,357	28	1,498
	Western Iowa Tech Community College	12	633	801	68	140	155	12	3,517	83	5,421
5 Private Not-for-Profit,2-year	St Lukes College	0	0	8	1	4	5	0	125	1	83
6 Private for-Profit, 2-year	Capri College-Cedar Rapids	0	0	9	0	1	10	1	129	2	152
	Capri College-Davenport	0	0	10	0	0	4	0	77	0	91
	Capri College-Dubuque	0	2	6	0	0	10	1	127	1	147
	EQ School of Hair Design	0	0	0	0	0	0	0	8	0	8
	Faust Institution of Cosmetology-Spirit lake	0	0	2	0	0	1	0	12	0	15
	Faust Institution of Cosmetology-Storm Lake	0	0	1	0	1	0	0	10	0	12
	Iowa School of Beauty-Marshalltown	0	0	5	3	1	1	0	15	0	25
	Iowa School of Beauty-Ottumwa	0	0	1	0	0	2	0	30	0	33
	Iowa School of Beauty-Sioux City	0	0	3	0	2	0	0	8	0	13
	La James International College-Cedar Falls	0	3	0	0	1	8	1	25	1	39
	La James International College-Davenport	0	4	3	0	0	18	0	43	0	68
	La James International College-Des Moines	0	0	3	0	0	7	0	18	0	28
	La James International College-Fort Dodge	0	1	1	0	0	3	0	44	1	50
	La James International College-Iowa City	0	9	0	0	1	13	0	23	4	50
	La James International College-Johnston	0	4	8	0	1	13	0	70	1	97
	Vatterott College	0	14	3	0	3	20	0	96	0	136
Totals		149	7,601	8,078	638	3,363	6,255	155	118,824	2,888	147,893



		Non-Resident Alien	Race/Ethnicity Unknown	Hispanic or Latino	American Indian or Alaska Native	Asian	Black or African American	Native Hawaiian or Pacific Islander	White	Two or More Races/Ethnicities	Total Graduate
1 Regent Universities	Iowa State University	0	87	55	5	53	42	2	1,277	21	1,542
	University of Iowa	0	792	121	10	216	72	1	3,170	389	4,771
	University of Northern Iowa	50	72	20	4	15	56	0	1,345	13	1,575
2 Private Not-for-Profit,4-year	AIB College of Business	0	0	0	0	0	0	0	0	0	0
	Allen College	0	11	2	0	0	2	0	209	1	222
	Briar Cliff University	0	0	4	0	1	5	0	70	0	80
	Buena Vista University	0	43	7	3	2	7	0	273	0	335
	Central College	0	0	0	0	0	0	0	0	0	0
	Clarke University	0	5	0	0	2	0	0	131	0	138
	Coe College	0	0	0	0	0	0	0	0	0	0
	Cornell College	0	0	0	0	0	0	0	0	0	0
	Des Moines University	0	10	11	0	18	6	0	445	9	499
	Divine Word College	0	0	0	0	0	0	0	0	0	0
	Dordt College	1	0	0	0	0	0	0	40	0	41
	Drake University	13	23	32	2	17	39	0	1,061	18	1,205
	Emmaus Bible College	0	0	0	0	0	0	0	0	0	0
	Faith Baptist Bible College	0	1	1	0	0	1	0	20	1	24
	Graceland University	0	7	2	1	1	0	0	118	2	131
	Grand View University	0	2	3	0	1	5	0	56	0	67
	Grinnell College	0	0	0	0	0	0	0	0	0	0
	Iowa Wesleyan College	0	0	0	0	0	0	0	0	0	0
	Loras College	0	0	1	0	1	0	0	54	0	56
	Luther College	0	0	0	0	0	0	0	0	0	0
	Maharishi University of Management	0	2	2	0	1	0	0	42	2	49
	Mercy College of Health Sciences	0	0	0	0	0	0	0	0	0	0
	Morningside College	0	147	28	2	8	4	2	1,198	3	1,392
	Mount Mercy College	0	13	2	3	6	23	1	265	10	323
	Northwestern College	0	4	1	0	0	0	0	80	0	85
	Palmer College of Chiropractic	0	0	5	2	5	2	0	178	2	194
	Simpson College	0	27	1	0	0	2	0	35	0	65
	St Ambrose University	12	24	19	1	13	13	1	421	6	510
	University of Dubuque	3	18	5	1	2	8	0	143	3	183
	Upper Iowa University	2	7	14	0	5	23	0	299	2	352
	Wartburg College	0	0	0	0	0	0	0	0	0	0
	William Penn University	0	1	3	0	3	9	0	53	0	69
3 Private for-Profit,4-year	Ashford University	0	0	0	0	0	0	0	0	0	0
	Hamilton Technical College	0	0	0	0	0	0	0	0	0	0
	ITT Technical Institute–Clive	0	0	0	0	0	0	0	0	0	0
	Kaplan University - Cedar Falls	0	0	1	1	1	3	0	30	0	36
	Kaplan University - Cedar Rapids	0	1	1	1	1	4	0	29	0	37
	Kaplan University - Davenport	0	3	0	1	0	3	0	26	1	34
	Kaplan University - Des Moines	0	11	8	0	3	7	0	52	0	81
	Kaplan University - Mason City	0	4	0	0	0	1	0	10	0	15
	Waldorf College	0	0	1	0	1	1	0	16	0	19
Totals		81	1,315	350	37	376	338	7	11,146	483	14,130



Exhibit 5  
Iowa College Student Aid Commission  
Student and Faculty Diversity Report  
Fall 2015  
Total Enrollment and Enrollment of Minority Population Groups  
Includes Full - and Part-Time Enrollments

		Total Enrollment	Enrollment Under Grad Students	Enrollment Grad Students	Total Students Racial/Ethnic Minority Groups	Undergraduate Students Racial/Ethnic Minority Groups	Graduate Students Racial/Ethnic Minority Groups
1 Regent Universities	Iowa State University	35,130	30,034	5,096	4,294	3,826	468
	University of Iowa	32,150	23,357	8,793	5,342	3,952	1,390
	University of Northern Iowa	11,981	10,169	1,812	1,123	988	135
2 Private Not-for-Profit,4-year	AIB College of Business	348	348	0	38	38	0
	Allen College	611	370	241	29	19	10
	Briar Cliff University	1,149	1,022	127	237	217	20
	Buena Vista University	2,322	1,978	344	194	174	20
	Central College	1,225	1,225	0	113	113	0
	Clarke University	1,075	868	207	123	118	5
	Coe College	1,398	1,398	0	299	299	0
	Cornell College	1,031	1,031	0	245	245	0
	Des Moines University	1,603	0	1,603	314	0	314
	Divine Word College	96	96	0	28	28	0
	Dordt College	1,456	1,383	73	40	39	1
	Drake University	4,991	3,338	1,653	616	436	180
	Emmaus Bible College	239	239	0	40	40	0
	Faith Baptist Bible College	282	242	40	18	14	4
	Graceland University	2,397	1,633	764	476	392	84
	Grand View University	1,988	1,921	67	358	349	9
	Grinnell College	1,705	1,705	0	430	430	0
	Iowa Wesleyan College	385	384	1	90	90	0
	Loras College	1,507	1,441	66	175	172	3
	Luther College	2,337	2,337	0	226	226	0
	Maharishi University of Management	1,530	353	1,177	172	77	95
	Mercy College of Health Sciences	789	789	0	110	110	0
	Morningside College	2,798	1,308	1,490	215	166	49
	Mount Mercy College	1,877	1,543	334	244	198	46
	Northwestern College	1,210	1,120	90	112	110	2
	Palmer College of Chiropractic	1,000	31	969	137	6	131
	Simpson College	1,690	1,623	67	137	134	3
	St Ambrose University	3,243	2,475	768	411	334	77
	University of Dubuque	2,179	1,842	337	551	526	25
	Upper Iowa University	5,215	4,529	686	1,256	1,126	130
	Wartburg College	1,537	1,537	0	167	167	0
	William Penn University	1,590	1,504	86	481	460	21
3 Private for-Profit,4-year	Ashford University	406	406	0	136	136	0
	Hamilton Technical College	147	147	0	39	39	0
	ITT Technical Institute–Clive	147	147	0	40	40	0
	Kaplan University - Cedar Falls	267	228	39	31	24	7
	Kaplan University - Cedar Rapids	368	325	43	58	49	9
	Kaplan University - Davenport	358	299	59	75	63	12
	Kaplan University - Des Moines	611	527	84	85	67	18
	Kaplan University - Mason City	192	170	22	17	15	2
	Waldorf College	2,060	1,852	208	580	523	57
4 Community Colleges	Des Moines Area Community College	22,298	22,298	0	4,080	4,080	0
	Eastern Iowa Community College	8,383	8,383	0	1,669	1,669	0
	Hawkeye Community College	5,371	5,371	0	889	889	0
	Indian Hills Community College	4,773	4,773	0	674	674	0
	Iowa Central Community College	5,634	5,634	0	1,152	1,152	0
	Iowa Lakes Community College	2,371	2,371	0	278	278	0
	Iowa Valley -- Ellsworth Community College	898	898	0	233	233	0
	Iowa Valley -- Marshalltown Community College	2,036	2,036	0	518	518	0
	Iowa Western Community College	4,957	4,957	0	1,176	1,176	0
	Kirkwood Community College	14,814	14,814	0	2,926	2,926	0
	North Iowa Area Community College	2,947	2,947	0	319	319	0
	Northeast Iowa Community College	4,865	4,865	0	259	259	0
	Northwest Iowa Community College	1,612	1,612	0	160	160	0
	Southeastern Community College	2,868	2,868	0	385	385	0
	Southwestern Community College	1,656	1,656	0	205	205	0
	Western Iowa Tech Community College	6,152	6,152	0	1,497	1,497	0
	St Lukes College	238	238	0	37	37	0
5 Private Not-for-Profit,2-year							
6 Private for-Profit, 2-year	Capri College-Cedar Rapids	152	152	0	23	23	0
	Capri College-Davenport	152	152	0	32	32	0
	Capri College-Dubuque	188	188	0	19	19	0
	EQ School of Hair Design	12	12	0	2	2	0
	Faust Institution of Cosmetology-Spirit lake	15	15	0	3	3	0
	Faust Institution of Cosmetology-Storm Lake	12	12	0	2	2	0
	Iowa School of Beauty-Marshalltown	25	25	0	10	10	0
	Iowa School of Beauty-Ottumwa	35	35	0	3	3	0
	Iowa School of Beauty-Sioux City	23	23	0	10	10	0
	La James International College-Cedar Falls	39	39	0	11	11	0
	La James International College-Davenport	77	77	0	25	25	0
	La James International College-Des Moines	28	28	0	10	10	0
	La James International College-Fort Dodge	51	51	0	5	5	0
	La James International College-Iowa City	51	51	0	18	18	0
	La James International College-Johnston	97	97	0	23	23	0
	Vatterott College	136	136	0	26	26	0
	Totals	229,586	202,240	27,346	36,581	33,254	3,327



Exhibit 6  
Iowa College Student Aid Commission  
Student and Faculty Diversity Report  
Fall 2015  
Total Enrollment and Enrollment of Minority Population Groups - Iowa Residents Only  
Includes Full - and Part-Time Enrollments

		Total Enrollment	Enrollment Under Grad Students	Enrollment Grad Students	Total Students Racial/Ethnic Minority Groups	Undergraduate Students Racial/Ethnic Minority Groups	Graduate Students Racial/Ethnic Minority Groups
1 Regent Universities	Iowa State University	20,827	19,285	1,542	2,510	2,332	178
	University of Iowa	17,531	12,760	4,771	2,890	2,081	809
	University of Northern Iowa	10,685	9,110	1,575	917	809	108
2 Private Not-for-Profit,4-year	AIB College of Business	303	303	0	28	28	0
	Allen College	580	358	222	19	14	5
	Briar Cliff University	682	602	80	107	97	10
	Buena Vista University	2,018	1,683	335	157	138	19
	Central College	962	962	0	59	59	0
	Clarke University	604	466	138	32	30	2
	Coe College	668	668	0	52	52	0
	Cornell College	174	174	0	18	18	0
	Des Moines University	499	0	499	44	0	44
	Divine Word College	0	0	0	0	0	0
	Dordt College	564	523	41	8	8	0
	Drake University	2,151	946	1,205	227	119	108
	Emmaus Bible College	90	90	0	11	11	0
	Faith Baptist Bible College	115	91	24	7	4	3
	Graceland University	618	487	131	38	32	6
	Grand View University	1,672	1,605	67	256	247	9
	Grinnell College	173	173	0	25	25	0
	Iowa Wesleyan College	166	166	0	17	17	0
	Loras College	591	535	56	40	38	2
	Luther College	701	701	0	41	41	0
	Maharishi University of Management	91	42	49	12	7	5
	Mercy College of Health Sciences	773	773	0	109	109	0
	Morningside College	2,200	808	1,392	136	89	47
	Mount Mercy College	1,692	1,369	323	197	152	45
	Northwestern College	685	600	85	28	27	1
	Palmer College of Chiropractic	203	9	194	16	0	16
	Simpson College	1,432	1,367	65	95	92	3
	St Ambrose University	1,534	1,024	510	165	112	53
	University of Dubuque	986	803	183	138	119	19
	Upper Iowa University	2,041	1,689	352	192	148	44
	Wartburg College	1,023	1,023	0	68	68	0
	William Penn University	956	887	69	151	136	15
3 Private for-Profit,4-year	Ashford University	159	159	0	28	28	0
	Hamilton Technical College	90	90	0	23	23	0
	ITT Technical Institute–Clive	142	142	0	37	37	0
	Kaplan University - Cedar Falls	259	223	36	30	24	6
	Kaplan University - Cedar Rapids	353	316	37	54	47	7
	Kaplan University - Davenport	204	170	34	36	31	5
	Kaplan University - Des Moines	598	517	81	82	64	18
	Kaplan University - Mason City	120	105	15	11	10	1
4 Community Colleges	Waldorf College	341	322	19	31	28	3
	Des Moines Area Community College	21,799	21,799	0	3,990	3,990	0
	Eastern Iowa Community College	7,308	7,308	0	1,368	1,368	0
	Hawkeye Community College	5,266	5,266	0	851	851	0
	Indian Hills Community College	4,225	4,225	0	532	532	0
	Iowa Central Community College	5,071	5,071	0	838	838	0
	Iowa Lakes Community College	2,035	2,035	0	151	151	0
	Iowa Valley -- Ellsworth Community College	669	669	0	108	108	0
	Iowa Valley -- Marshalltown Community College	1,855	1,855	0	452	452	0
	Iowa Western Community College	2,912	2,912	0	434	434	0
	Kirkwood Community College	13,545	13,545	0	2,556	2,556	0
	North Iowa Area Community College	2,733	2,733	0	253	253	0
	Northeast Iowa Community College	4,490	4,490	0	234	234	0
	Northwest Iowa Community College	1,472	1,472	0	139	139	0
	Southeastern Community College	2,421	2,421	0	313	313	0
	Southwestern Community College	1,498	1,498	0	137	137	0
	Western Iowa Tech Community College	5,421	5,421	0	1,259	1,259	0
5 Private Not-for-Profit,2-year	St Lukes College	83	83	0	19	19	0
6 Private for-Profit, 2-year	Capri College-Cedar Rapids	152	152	0	23	23	0
	Capri College-Davenport	91	91	0	14	14	0
	Capri College-Dubuque	147	147	0	18	18	0
	EQ School of Hair Design	8	8	0	0	0	0
	Faust Institution of Cosmetology-Spirit lake	15	15	0	3	3	0
	Faust Institution of Cosmetology-Storm Lake	12	12	0	2	2	0
	Iowa School of Beauty-Marshalltown	25	25	0	10	10	0
	Iowa School of Beauty-Ottumwa	33	33	0	3	3	0
	Iowa School of Beauty-Sioux City	13	13	0	5	5	0
	La James International College-Cedar Falls	39	39	0	11	11	0
	La James International College-Davenport	68	68	0	21	21	0
	La James International College-Des Moines	28	28	0	10	10	0
	La James International College-Fort Dodge	50	50	0	5	5	0
	La James International College-Iowa City	50	50	0	18	18	0
	La James International College-Johnston	97	97	0	23	23	0
	Vatterott College	136	136	0	26	26	0
	Totals	162,023	147,893	14,130	22,968	21,377	1,591



Exhibit 7  
Iowa College Student Aid Commission  
Student and Faculty Diversity Report  
Fall 2015  
State Financial Aid to Minority Students at Iowa Colleges and Universities  
Awards in Four Major Programs\* in the 2013-2014 Academic Year

		Iowa Tuition Grant (ITG) Awards- Total	Iowa Tuition Grant (ITG) Awards to Minority Students	Iowa Grants (IG)- Total	Iowa Grants (IG) to Minority Students	Vocational Technical Tuition Grants (IVTTG)-Total	Vocational Technical Tuition Grants (IVTTG) to Minority Students	All Iowa Opportunity Scholarships - Total	All Iowa Opportunity Scholarships to Minority Students	State Aid Awards Total for these four Programs	State Aid Awards Total for these four Programs to Minority Students
1 Regent Universities	Iowa State University	0	0	148	40	0	0	66	36	214	76
	University of Iowa	0	0	87	33	0	0	33	24	120	57
	University of Northern Iowa	0	0	111	21	0	0	51	13	162	34
2 Private Not-for-Profit,4-year	AIB College of Business	516	48	22	4	0	0	4	0	542	52
	Allen College	286	10	12	0	0	0	0	0	298	10
	Briar Cliff University	390	87	7	3	0	0	2	1	397	91
	Buena Vista University	1,511	137	35	12	0	0	5	1	1,548	150
	Central College	648	37	17	2	0	0	7	1	670	40
	Clarke University	341	16	6	1	0	0	0	0	354	17
	Coe College	383	25	7	2	0	0	2	2	390	29
	Cornell College	102	7	2	0	0	0	1	0	106	7
	Des Moines University	0	0	0	0	0	0	0	0	0	0
	Divine Word College	0	0	0	0	0	0	0	0	0	0
	Dordt College	316	8	5	1	0	0	1	0	322	9
	Drake University	403	69	6	3	0	0	5	2	414	74
	Emmaus Bible College	49	7	6	1	0	0	0	0	55	8
	Faith Baptist Bible College	68	3	4	0	0	0	0	0	72	3
	Graceland University	211	16	8	0	0	0	8	3	227	19
	Grand View University	1,094	201	28	4	0	0	4	1	1,126	206
	Grinnell College	75	15	2	1	0	0	0	0	77	16
	Iowa Wesleyan College	206	17	9	0	0	0	0	0	215	17
	Loras College	268	19	5	1	0	0	1	0	273	20
	Luther College	348	18	5	3	0	0	0	0	353	21
	Maharishi University of Management	39	9	1	0	0	0	0	0	40	9
	Mercy College of Health Sciences	433	58	12	4	0	0	0	0	445	62
	Morningside College	513	65	13	3	0	0	6	3	532	71
	Mount Mercy College	750	90	15	0	0	0	0	0	765	90
	Northwestern College	338	22	6	1	0	0	3	0	350	23
	Palmer College of Chiropractic	0	0	0	0	0	0	0	0	0	0
	Simpson College	775	60	21	2	0	0	7	1	803	63
	St Ambrose University	508	62	9	4	0	0	0	0	517	66
	University of Dubuque	445	0	10	0	0	0	3	0	458	0
	Upper Iowa University	1,077	128	31	29	0	0	2	0	1,110	157
	Wartburg College	516	51	8	4	0	0	2	0	526	55
	William Penn University	682	109	21	3	0	0	3	3	706	115
3 Private for-Profit,4-year	Ashford University	0	0	0	0	0	0	0	0	0	0
	Hamilton Technical College	0	0	0	0	0	0	0	0	0	0
	ITT Technical Institute–Clive	0	0	0	0	0	0	0	0	0	0
	Kaplan University - Cedar Falls	245	4	17	2	0	0	0	0	262	6
	Kaplan University - Cedar Rapids	347	4	16	1	0	0	0	0	363	5
	Kaplan University - Davenport	301	4	10	1	0	0	0	0	311	5
	Kaplan University - Des Moines	532	4	21	1	0	0	0	0	553	5
	Kaplan University - Mason City	164	3	1	0	0	0	0	0	165	3
	Waldorf College	112	10	5	2	0	0	0	0	117	12
4 Community Colleges	Des Moines Area Community College	0	0	89	28	607	108	34	14	730	150
	Eastern Iowa Community Colleges-Clinton, Muscatine and Scott	0	0	38	6	129	23	3	2	170	31
	Hawkeye Community College	0	0	32	15	249	22	24	6	305	43
	Indian Hills Community College	0	0	21	3	180	24	12	3	213	30
	Iowa Central Community College	0	0	17	0	221	35	22	6	260	41
	Iowa Lakes Community College	0	0	9	1	94	3	8	1	111	5
	Iowa Valley -- Ellsworth Community College	0	0	24	10	26	4	7	0	57	14
	Iowa Valley -- Marshalltown Community College	0	0	29	11	48	11	6	6	83	28
	Iowa Western Community College	0	0	14	0	137	1	9	0	160	1
	Kirkwood Community College	0	0	107	72	452	51	14	5	573	128
	North Iowa Area Community College	0	0	13	1	63	4	2	0	78	5
	Northeast Iowa Community Colleges-Calmar and Peosta	0	0	27	3	196	6	2	1	225	10
	Northwest Iowa Community College	0	0	5	3	78	8	2	0	85	11
	Southeastern Community College	0	0	19	1	86	12	2	0	107	13
	Southwestern Community College	0	0	9	1	56	5	21	3	86	9
	Western Iowa Tech Community College	0	0	19	3	214	29	42	15	275	47
5 Private Not-for-Profit,2-year	St Lukes College	87	7	2	1	0	0	1	0	89	8
6 Private for-Profit, 2-year	Capri College-Cedar Rapids	0	0	0	0	0	0	0	0	0	0
	Capri College-Davenport	0	0	0	0	0	0	0	0	0	0
	Capri College-Dubuque	0	0	0	0	0	0	0	0	0	0
	EQ School of Hair Design	0	0	0	0	0	0	0	0	0	0
	Faust Institution of Cosmetology-Spirit lake	0	0	0	0	0	0	0	0	0	0
	Faust Institution of Cosmetology-Storm Lake	0	0	0	0	0	0	0	0	0	0
	Iowa School of Beauty-Marshalltown	0	0	0	0	0	0	0	0	0	0
	Iowa School of Beauty-Ottumwa	0	0	0	0	0	0	0	0	0	0
	Iowa School of Beauty-Sioux City	0	0	0	0	0	0	0	0	0	0
	La James International College-Cedar Falls	0	0	0	0	0	0	0	0	0	0
	La James International College-Davenport	0	0	0	0	0	0	0	0	0	0
	La James International College-Des Moines	0	0	0	0	0	0	0	0	0	0
	La James International College-Fort Dodge	0	0	0	0	0	0	0	0	0	0
	La James International College-Iowa City	0	0	0	0	0	0	0	0	0	0
	La James International College-Johnston	0	0	0	0	0	0	0	0	0	0
	Vatterott College	0	0	0	0	0	0	0	0	0	0
Totals		15,079	1,430	1,223	348	2,836	346	427	153	19,565	2,277





		Total Faculty	Faculty Excluding Non- Resident Alien and Race/Ethnicity Unknown	Faculty from Minority Population Groups
1 Regent Universities	Iowa State University	1,973	1,973	446
	University of Iowa	2,836	2,561	480
	University of Northern Iowa	550	535	72
2 Private Not-for-Profit,4-year	AIB College of Business	54	54	1
	Allen College	54	54	3
	Briar Cliff University	71	71	7
	Buena Vista University	416	369	17
	Central College	105	105	12
	Clarke University	91	91	3
	Coe College	177	176	10
	Cornell College	130	127	11
	Des Moines University	95	92	16
	Divine Word College	19	19	4
	Dordt College	153	153	2
	Drake University	510	494	63
	Emmaus Bible College	33	33	5
	Faith Baptist Bible College	31	31	2
	Graceland University	88	87	9
	Grand View University	214	210	13
	Grinnell College	210	198	43
	Iowa Wesleyan College	93	78	4
	Loras College	155	154	7
	Luther College	234	230	23
	Maharishi University of Management	159	151	23
	Mercy College of Health Sciences	81	81	4
	Morningside College	247	238	1
	Mount Mercy College	81	80	8
	Northwestern College	145	132	6
	Palmer College of Chiropractic	81	81	7
	Simpson College	207	163	10
	St Ambrose University	449	418	34
	University of Dubuque	90	90	11
	Upper Iowa University	897	673	72
	Wartburg College	172	171	10
	William Penn University	98	95	4
3 Private for-Profit,4-year	Ashford University	35	17	2
	Hamilton Technical College	11	11	2
	ITT Technical Institute–Clive	38	37	7
	Kaplan University - Cedar Falls	18	14	0
	Kaplan University - Cedar Rapids	25	14	1
	Kaplan University - Davenport	20	12	1
	Kaplan University - Des Moines	46	30	1
	Kaplan University - Mason City	5	3	0
4 Community Colleges	Waldorf College	122	121	12
	Des Moines Area Community College	370	369	30
	Eastern Iowa Community College	925	909	81
	Hawkeye Community College	364	364	23
	Indian Hills Community College	291	291	5
	Iowa Central Community College	437	388	8
	Iowa Lakes Community College	161	131	131
	Iowa Valley -- Ellsworth Community College	83	74	4
	Iowa Valley -- Marshalltown Community College	92	87	5
	Iowa Western Community College	450	411	24
	Kirkwood Community College	271	271	16
	North Iowa Area Community College	138	126	1
	Northeast Iowa Community College	409	402	4
	Northwest Iowa Community College	147	146	2
	Southeastern Community College	191	186	15
	Southwestern Community College	119	119	7
	Western Iowa Tech Community College	314	287	12
5 Private Not-for-Profit,2-year	St Lukes College	35	35	1
6 Private for-Profit, 2-year	Capri College-Cedar Rapids	28	28	1
	Capri College-Davenport	23	23	1
	Capri College-Dubuque	55	55	1
	EQ School of Hair Design	9	9	1
	Faust Institution of Cosmetology-Spirit lake	4	4	0
	Faust Institution of Cosmetology-Storm Lake	3	3	1
	Iowa School of Beauty-Marshalltown	3	3	0
	Iowa School of Beauty-Ottumwa	5	5	0
	Iowa School of Beauty-Sioux City	5	5	0
	La James International College-Cedar Falls	13	13	0
	La James International College-Davenport	23	23	0
	La James International College-Des Moines	16	16	2
	La James International College-Fort Dodge	8	8	1
	La James International College-Iowa City	8	8	2
	La James International College-Johnston	14	14	2
	Vatterott College	24	24	2
Totals		16,357	15,364	1,852