

Iowa College Student Aid Commission

# Student and Faculty Ethnic Diversity Report

March, 2015



[IowaCollegeAid.gov](http://IowaCollegeAid.gov)  
Because College Changes Everything

# **Iowa College Student Aid Commission Student and Faculty Ethnic Diversity Report March 2015**

## **Executive Summary**

The Iowa College Student Aid Commission annual Student and Faculty Ethnic Diversity Report summarizes trends in representation by minority population groups among students, faculty, and state financial aid recipients at Iowa colleges and universities. The report has been published each year since 1992 and is provided to the Governor and General Assembly of Iowa as directed by Iowa Code §261.2 (Duties of commission). The report is based on an annual survey of Iowa college and university officials. The Commission and staff are grateful for the assistance of college and university staff who contributed the information compiled for this report.

Findings of the 2015 report include the following:

- In the fall of 2014, 34,992 minority students were enrolled at Iowa colleges and universities.
- Enrollment of racial and ethnic minority students in Iowa's colleges and universities has expanded steadily since 1992, when the Ethnic Diversity Survey was first conducted. Between fall 1992 and fall 2014, enrollment of racial and ethnic minority students in Iowa's colleges and universities more than tripled.
- In the fall of 2014, racial and ethnic minorities represented 15.1% of total enrollment in Iowa's colleges and universities.
- In the fall of 2014, 9.4% of students enrolled in Iowa colleges and universities were Iowa resident minority students.
- Of Iowa-resident minority students attending college in Iowa during the previous academic year (2012-13), 12.3% were awarded an Iowa Grant, Iowa Tuition Grant, Iowa Vocational-Technical Tuition Grant, or All Iowa Opportunity Scholarship.

Methods for collecting the data in this report are described under Report Background. The numbers reported only reflect self-reported race and ethnicity to the institutions; therefore data represented in this report will not match total enrollment data on various other reports.

For this report, minority students and faculty include those from the following population groups: Hispanic or Latino; American Indian or Alaska Native; Asian; Black or African American; Native Hawaiian or other Pacific Islander; two or more races/ethnicities.

Detailed data tables are provided as attached exhibits.

## **Contents**

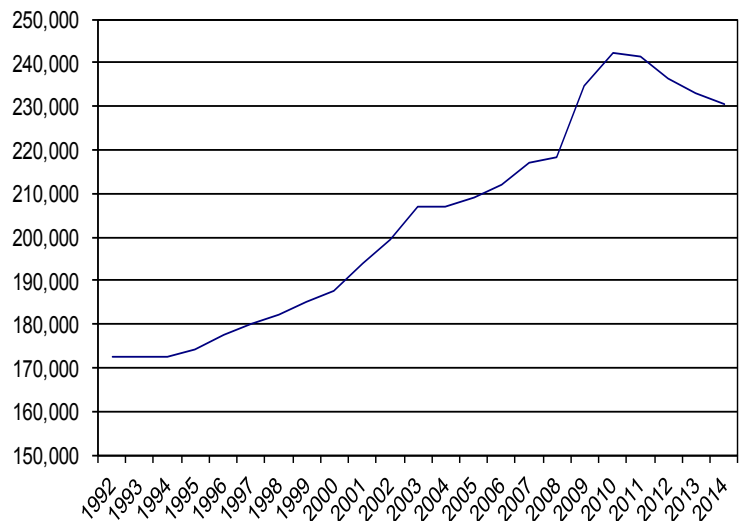
<b>Executive Summary .....</b>	<b>2</b>
<b>Postsecondary Enrollment 1992 - 2014 .....</b>	<b>3</b>
<b>Minority Participation in State-Appropriated Student Financial Aid Programs .....</b>	<b>5</b>
<b>Report Background.....</b>	<b>6</b>
<b>References.....</b>	<b>7</b>
<b>Exhibits</b>	<b>Error! Bookmark not defined.</b>

## Postsecondary Enrollment 1992 - 2014

In the fall of 2014, a total of 230,686 full- and part-time graduate and undergraduate students were enrolled in Iowa postsecondary institutions, including regent universities, independent four-year colleges and universities, community colleges, proprietary colleges, and specialized graduate medical schools. Note that this figure represents enrollment at Iowa degree-granting institutions, which annually report student ethnic diversity data to the Iowa College Student Aid Commission.

Total enrollment in Iowa's colleges and universities increased steadily until 2011. In the fall of 1992, the first year of the Ethnic Diversity Report, full-time and part-time enrollment in Iowa was 172,435. Between 1992 and 2014, total enrollment expanded 33.7%. Total enrollment started to decrease in 2011 during the economic recovery although students from racial and ethnic minority groups increased.

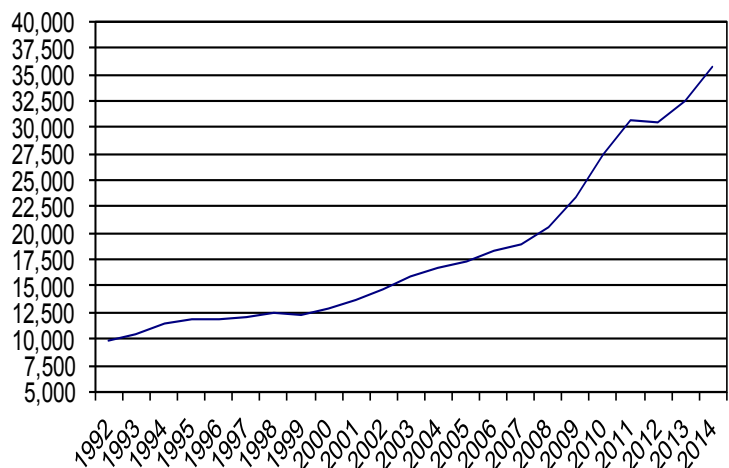
**Total Enrollment in Iowa Colleges and Universities**



Source: Iowa College Enrollment Report and Iowa College Student Aid Commission Report of Ethnic Diversity. Total enrollments include full- and part-time undergraduate, graduate, and professional students.

Mirroring overall enrollment, the enrollment of racial and ethnic minority students in Iowa's colleges and universities has increased since 1992. In 1992, Iowa colleges and universities enrolled 9,744 students from racial or ethnic minority groups; in 2014, this figure was 34,992 an increase over 250%. In 2011 total enrollment began to decrease in Iowa colleges and universities, largely due to the economic recovery but enrollment of minority groups increased over 11.0% from years 2011 to 2014. In the years between 1992 and 2014, the total population of Iowa increased by 300,203 from 2.81 million to 3.10 million.

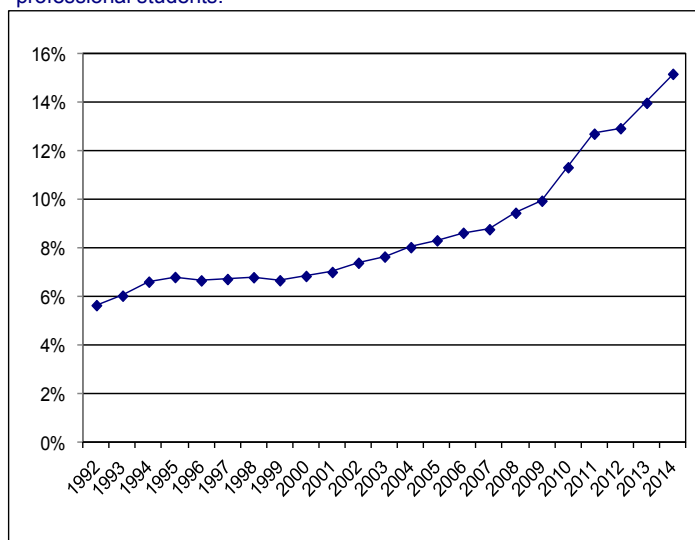
**Enrollment by Students from Racial and Ethnic Minority Population Groups**



Enrollments include full- and part-time undergraduate, graduate and professional students.

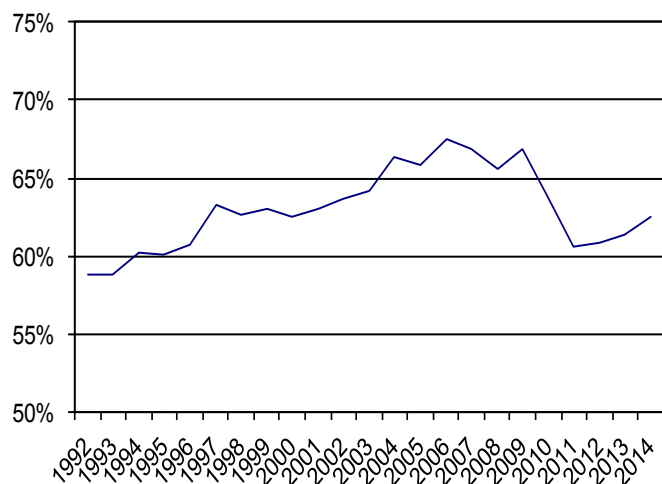
## Minority Enrollment as a Percentage of Total Enrollment : 1992-2014

Enrollments include full- and part-time undergraduate, graduate, and professional students.



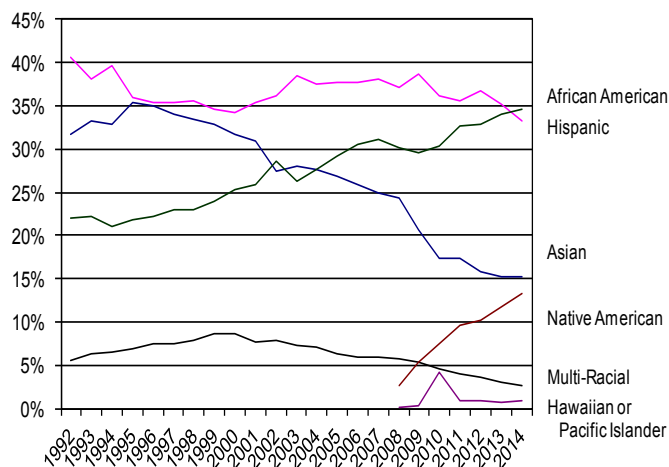
Between 1992 and 2014, total enrollment in Iowa colleges and universities increased by over 58,000 students, from 172,435 to 230,686 and the percentage of total enrollment represented by racial and ethnic minorities in Iowa's colleges and universities expanded from 5.7% to 15.2%. Growth in minority enrollments between 1992 and 2014 significantly outpaced overall enrollment growth during these two decades. Between 1992 and 2014, total enrollment grew by 33.8%, while enrollment of racial and ethnic minority students increased over 250%. As a percentage of total enrollments, minority enrollment began its steady expansion in the early 2000s. A little over half of total minority students enrolled in Iowa colleges and universities are Iowa residents.

## Iowa Resident Percent of Total Minority Students: 1992-2014



Enrollments include full- and part-time undergraduate, graduate, and professional students.

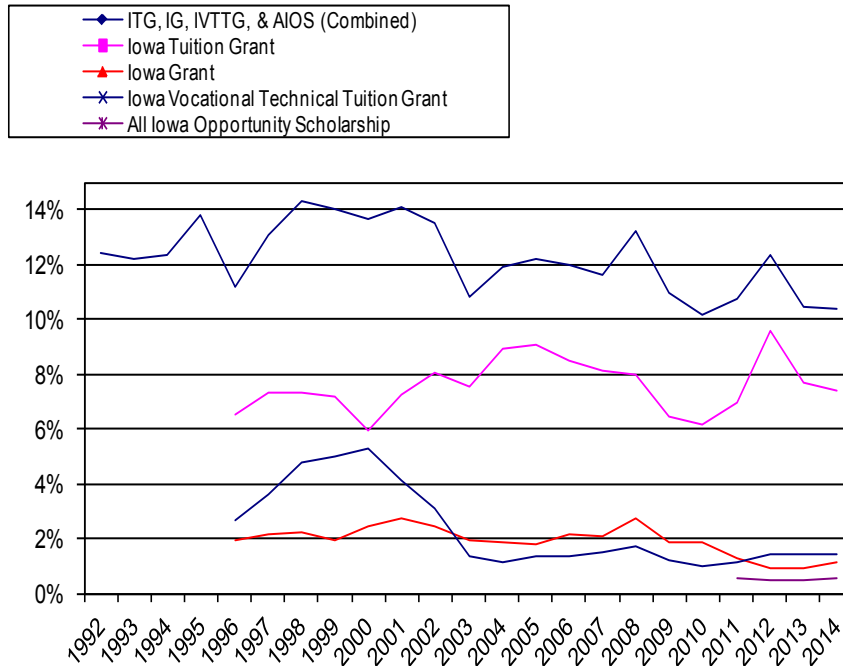
## Iowa-Resident Minority Students by Population Group: 1992-2014



Enrollments include full- and part-time undergraduate, graduate, and professional students.

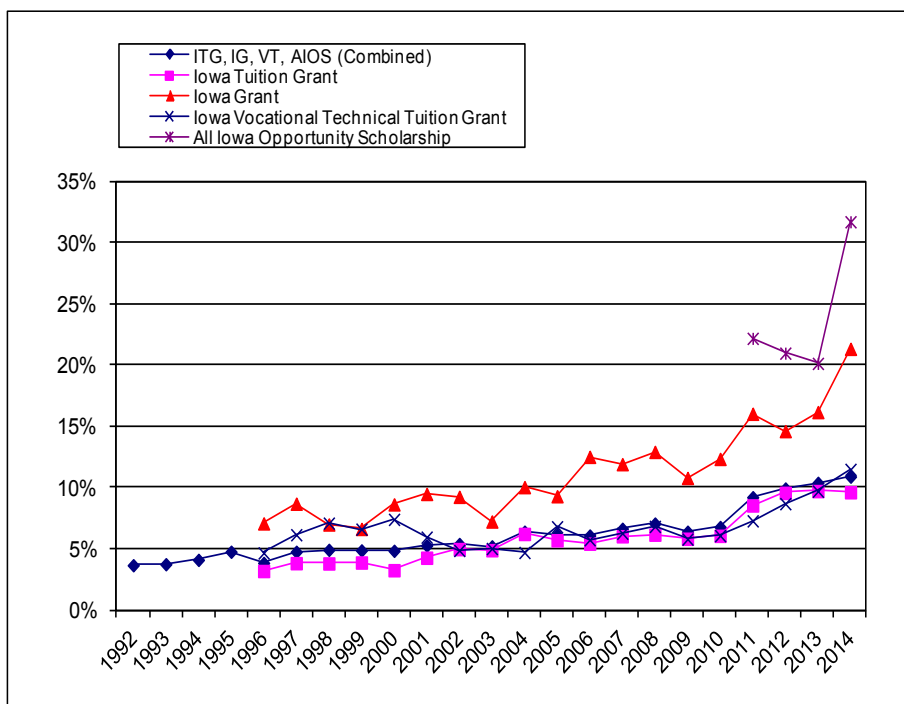
# Minority Participation in State-Appropriated Student Financial Aid Programs

## Percent of Iowa Minority Students Receiving Grants and Scholarships



For the Student and Faculty Ethnic Diversity Report, Iowa institutions also report the race/ethnicity of recipients of state financial aid for four major state aid programs: Iowa Grants, Iowa Tuition Grants, Iowa Vocational-Technical Tuition Grants, and All Iowa Opportunity Scholarships.

In the 2013-2014 academic year, some 10.4% of Iowa resident minority students attending college in Iowa were awarded one or more of these grants. The chart at left tracks the history, since 1992, of grant program participation by Iowa-resident minority students. Participation by program is reported beginning with the 1995-1996 academic year. Participation in the All Iowa Opportunity Grant program by race/ethnicity is reported for the first time in 2010-11.



The chart at left shows minority participation in these four state aid programs as a percentage of total participation. In 2013-2014 academic year, 9.6% of Iowa Tuition Grants, 11.3% of Iowa Vocational-Technical Tuition Grants, 21.3% of Iowa Grants, and 31.7% of All Iowa Opportunity Scholarships were awarded to minority students.

## **Report Background**

Iowa Code §261.2 directs the Iowa College Student Aid Commission to collect data on racial and ethnic diversity at Iowa colleges and universities and to provide a report to the Governor and General Assembly of Iowa. The Commission collects this information by means of its annual Ethnic Diversity Survey, one of three principal surveys the Commission administers to Iowa postsecondary institutions annually.

Since it was first administered in 1992 until the fall of 2009, the content of the Commission's ethnic diversity survey remained essentially unchanged. During this period, the survey collected information about the representation of students and faculty from various minority population groups for both U.S. citizens and non-resident aliens. With the fall 2010 survey, the Commission's survey form implemented new race and ethnicity categories consistent with U.S. Department of Education guidelines for reporting race and ethnicity. In 2010, for the first time, the survey allowed institutions to report the (unduplicated headcount) number of students and faculty in the following race/ethnicity categories:

1. Non-Resident Alien
2. Race and Ethnicity Unknown
3. White

In previous years the ethnic diversity survey collected the race/ethnicity of non-resident aliens rather than treating "non-resident alien" as a separate and unique race/ethnicity category for reporting purposes. For this reason, apparent trends in minority representation are partly conflated with shifts attributable to this one-time change in methods of counting students and faculty by race/ethnicity.

The system used for reporting race and ethnicity data in the Commission's annual ethnic diversity survey is consistent with the U.S. Department of Education's guidance on reporting such data as it pertains to the Integrated Postsecondary Education Data System (IPEDS) (Federal Register, 2007). According to this guidance, when reporting race and ethnicity data, educational institutions report aggregated racial and ethnic data in the following seven categories:

### **Race and Ethnicity Categories Used for this Report**

1. Non-Resident Alien.
2. Race and Ethnicity Unknown.
3. Hispanic or Latino. A person of Cuban, Mexican, Puerto Rican, South or Central American, or other Spanish culture or origin, regardless of race. The term "Spanish origin" can be used in addition to "Hispanic/Latino or Latino."
4. American Indian or Alaska Native. A person having origins in any of the original peoples of North and South America (including Central America), and who maintains a tribal affiliation or community attachment.
5. Asian. A person having origins in any of the original peoples of the Far East, Southeast Asia, or the Indian subcontinent including, for example, Cambodia, China, India, Japan, Korea, Malaysia, Pakistan, the Philippine Islands, Thailand, and Vietnam.
6. Black or African American. A person having origins in any of the Black racial groups of Africa.

7. Native Hawaiian or Other Pacific Islander. A person having origins in any of the original peoples of Hawaii, Guam, Samoa, or other Pacific Islands.
8. White. A person having origins in any of the original peoples of Europe, the Middle East, or North Africa.
9. Two or more races.

## **References**

Duties of commission, Iowa Code §261.2 (2011).

Federal Register 72:202 (Friday, October 19, 2007)  
<http://edocket.access.gpo.gov/2007/pdf/E7-20613.pdf>.

U. S. Census Bureau. (2013). American Community Survey. Washington, DC; Author.

For information about this report, contact:

Joe Dullard  
Statistical Research Analyst  
Iowa College Student Aid Commission  
430 E. Grand 3<sup>rd</sup> Floor  
Des Moines IA 50309  
[joe.dullard@iowa.gov](mailto:joe.dullard@iowa.gov)  
Phone: 515.725.3406

- Exhibit A - Summary of Student and Faculty Ethnic Diversity at Iowa Colleges and Universities 1992 -2014
- Exhibit B - Undergraduate Enrollment in Iowa Colleges and Universities by Race/Ethnicity
- Exhibit C - Graduate Enrollment in Iowa Colleges and Universities by Race/Ethnicity
- Exhibit D - Undergraduate Enrollment in Iowa Colleges and Universities by Race/Ethnicity - Iowa Residents
- Exhibit E - Graduate Enrollment in Iowa Colleges and Universities by Race/Ethnicity - Iowa Residents
- Exhibit F - Total Enrollment and Enrollment of Minority Population Groups
- Exhibit G - Total Enrollment and Enrollment of Minority Population Groups - Iowa Residents Only
- Exhibit H - State Financial Aid to Minority Students at Iowa Colleges and Universities - Awards in Four Major Programs\* in the 2013-2014 Academic Year
- Exhibit I - Faculty at Iowa Colleges and Universities



**Exhibit B**  
**Iowa College Student Aid Commission**  
**Student and Faculty Ethnic Diversity**  
**Fall 2014**  
**Undergraduate Enrollment in Iowa Colleges and Universities by Race/Ethnicity**  
**Undergraduate (Full-time and Part-time)**

		Non-Resident Alien	Race/Ethnicity Unknown	Hispanic or Latino	American Indian or Alaska Native	Asian	Black or African American	Native Hawaiian or Pacific Islander	White	Two or More Races/Ethnicities	Total Under-graduate
1 Regent Universities	Iowa State University	2,216	1,205	1,291	66	816	739	26	21,910	624	28,893
	University of Iowa	2,495	1,289	1,416	30	710	573	22	15,222	520	22,354
	University of Northern Iowa	487	200	339	20	90	285	7	8,519	195	10,142
2 Private Not-for-Profit, 4-year	Allen College	3	19	1	0	6	8	2	337	3	379
	AIB College of Business	20	421	49	3	8	38	5	457	13	1,014
	Briar Cliff University	36	0	92	7	18	55	1	814	18	1,041
	Buena Vista University	63	154	90	13	26	32	1	1,637	19	2,035
	Central College	18	43	44	5	15	26	2	1,244	14	1,411
	Clarke University	12	18	42	1	7	31	0	822	16	949
	Coe College	74	61	109	3	24	70	1	1,048	45	1,435
	Cornell College	47	44	139	4	26	55	3	708	45	1,071
	Divine Word College	56	4	12	0	35	6	0	11	0	124
	Dordt College	132	192	12	3	10	22	1	1,023	0	1,395
	Drake University	244	35	117	6	141	118	1	2,647	55	3,364
	University of Dubuque	18	106	136	9	36	211	2	1,186	60	1,764
	Emmaus Bible College	7	16	10	2	3	8	2	161	7	216
	Faith Baptist Bible College	0	0	3	3	1	5	2	233	3	250
	Graceland University	94	72	140	4	14	158	18	1,140	46	1,686
	Grand View University	42	152	73	6	59	159	1	1,450	63	2,005
	Grinnell College	228	62	134	3	228	100	0	1,005	74	1,734
	Iowa Wesleyan College	23	107	18	4	5	29	1	297	10	494
	Loras College	28	52	88	1	12	38	2	1,225	22	1,468
	Luther College	146	15	80	8	39	34	0	2,014	49	2,385
	Maharishi University of Management	38	3	35	2	13	36	0	151	13	291
	Mercy College of Health Sciences	0	8	19	2	21	36	0	685	3	774
	Morningside College	23	59	80	8	11	24	3	1,085	28	1,321
	Mount Mercy College	44	72	22	4	20	59	1	1,198	24	1,444
	Northwestern College	40	49	61	2	13	17	0	999	24	1,205
	Des Moines University	0	0	0	0	0	0	0	0	0	0
	Palmer College of Chiropractic	0	0	2	0	3	2	0	26	1	34
	St Ambrose University	70	99	165	4	31	83	2	2,200	60	2,714
	Simpson College	12	231	30	12	21	25	0	1,304	25	1,660
	Upper Iowa University	914	142	214	18	58	816	11	2,880	73	5,126
	Wartburg College	8	45	50	1	64	153	1	1,301	38	1,661
	William Penn University	60	57	130	10	22	278	5	1,108	28	1,698
3 Private for-Profit, 4-year	Kaplan University - Mason City	0	53	11	1	1	2	0	128	0	196
	Kaplan University - Cedar Rapids	0	5	14	3	5	34	1	319	0	381
	Hamilton Technical College	0	3	11	1	1	23	0	104	2	145
	Ashford University	80	11	68	3	2	120	2	402	8	696
	Waldorf College	1	13	108	7	21	250	9	997	18	1,424
	Kaplan University - Davenport	1	45	29	0	3	50	1	235	0	364
	Kaplan University - Cedar Falls	0	1	7	1	1	18	0	239	0	267
	Kaplan University - Des Moines	0	82	27	2	11	42	2	433	0	599
	ITT Technical Institute-Clive	0	11	12	0	4	20	0	96	4	147
	ITT Technical Institute - Cedar Rapids	0	0	0	0	0	0	0	1	0	1
4 Community Colleges	Des Moines Area Community College	185	1,012	1,509	88	845	1,440	14	17,859	574	23,526
	Iowa Valley -- Ellsworth Community College	12	94	59	4	1	167	3	589	20	949
	Eastern Iowa Community College	45	334	710	37	151	523	16	6,076	251	8,143
	Hawkeye Community College	20	0	156	13	79	436	4	4,491	92	5,291
	Indian Hills Community College	100	222	171	11	34	235	5	3,570	64	4,412
	Iowa Central Community College	57	300	434	23	83	529	13	4,190	57	5,686
	Iowa Lakes Community College	0	54	110	15	47	115	8	2,288	11	2,648
	Iowa Western Community College	80	94	377	92	98	652	12	3,713	0	5,118
	Kirkwood Community College	302	1,028	624	77	234	1,154	18	10,482	349	14,268
	Iowa Valley -- Marshalltown Community College	66	180	281	43	35	63	3	1,346	25	2,042
	North Iowa Area Community College	32	0	136	8	32	118	1	2,592	31	2,950
	Northeast Iowa Community College	4	118	71	8	14	96	4	4,594	25	4,934
	Northwest Iowa Community College	1	55	69	5	17	4	2	1,397	18	1,568
	Southeastern Community College	36	96	128	33	33	111	4	2,474	72	2,987
	Southwestern Community College	13	3	37	3	9	58	2	1,445	30	1,600
	Western Iowa Tech Community College	48	766	826	113	171	202	12	4,160	101	6,399
5 Private Not-for-Profit, 2-year	St Lukes College	0	22	18	1	6	8	1	188	7	251
6 Private for-Profit, 2-year	Capri College	0	0	2	0	0	8	0	127	3	140
	Capri College	0	1	3	1	2	7	0	108	2	124
	Iowa School of Beauty	0	0	3	1	0	1	0	18	0	23
	Faust Institution of Cosmetology	0	0	1	0	0	0	0	15	0	16
	Iowa School of Beauty	0	0	12	0	6	14	2	70	3	107
	La' James International College	0	4	3	0	1	6	1	27	0	42
	La' James International College	0	0	5	0	3	9	0	49	0	66
	LaJames College of Hairstyling	0	0	18	0	0	2	0	55	0	75
	La' James International College	0	1	1	0	1	5	0	24	0	32
	Iowa School of Beauty	0	0	2	0	0	3	0	40	0	45
	La' James International College	0	2	2	0	1	7	0	14	0	26
	La' James International College	0	1	1	0	0	8	0	18	5	33
	Capri College	0	0	15	1	1	5	0	86	1	109
	Iowa School of Beauty	0	0	10	2	5	0	0	24	0	41
	EQ School of Hair Design	0	0	1	0	0	0	0	16	0	17
	Vatterott College	0	9	11	0	2	17	1	84	0	124
	Faust Institution of Cosmetology	0	0	2	0	0	2	0	15	1	20
<b>Totals</b>		<b>8,781</b>	<b>9,652</b>	<b>11,338</b>	<b>861</b>	<b>4,466</b>	<b>10,893</b>	<b>264</b>	<b>153,245</b>	<b>3,992</b>	<b>203,569</b>



**Exhibit C**  
**Iowa College Student Aid Commission**  
**Student and Faculty Ethnic Diversity**  
**Fall 2014**  
**Graduate Enrollment in Iowa Colleges and Universities by Race/Ethnicity**  
**Graduate (Full-time and Part-time)**

		Non-Resident Alien	Race/Ethnicity Unknown	Hispanic or Latino	American Indian or Alaska Native	Asian	Black or African American	Native Hawaiian or Pacific Islander	White	Two or More Races/Ethnicities	Total Graduate
1 Regent Universities	Iowa State University	1,790	193	146	12	116	151	5	2,493	44	4,950
	University of Iowa	1,514	1070	336	19	364	160	4	5,031	486	9,033
	University of Northern Iowa	139	69	38	5	18	54	0	1,448	15	1,786
2 Private Not-for-Profit, 4-year	Allen College	1	5	1	0	1	2	0	179	2	194
	AIB College of Business	0	0	0	0	0	0	0	0	0	0
	Briar Cliff University	0	0	6	1	1	8	0	77	1	94
	Buena Vista University	0	36	2	1	2	2	0	217	0	260
	Central College	0	0	0	0	0	0	0	0	0	0
	Clarke University	1	27	2	0	2	2	0	217	0	251
	Coe College	0	0	0	0	0	0	0	1	0	1
	Cornell College	0	0	0	0	0	0	0	0	0	0
	Divine Word College	0	0	0	0	0	0	0	0	0	0
	Dordt College	5	31	0	0	0	0	0	23	0	59
	Drake University	37	23	46	4	59	42	0	1,463	24	1,698
	University of Dubuque	41	168	5	1	3	10	0	126	0	354
	Emmaus Bible College	0	0	0	0	0	0	0	0	0	0
	Faith Baptist Bible College	0	0	0	0	3	1	0	37	1	42
	Graceland University	10	92	29	5	17	43	3	610	15	824
	Grand View University	0	2	3	0	0	4	0	50	0	59
	Grinnell College	0	0	0	0	0	0	0	0	0	0
	Iowa Wesleyan College	0	0	0	0	0	0	0	0	0	0
	Loras College	0	3	0	0	1	1	0	74	0	79
	Luther College	0	0	0	0	0	0	0	0	0	0
	Maharishi University of Management	825	14	8	1	12	57	0	106	9	1,032
	Mercy College of Health Sciences	0	0	0	0	0	0	0	0	0	0
	Morningside College	0	222	28	2	4	6	2	1,238	1	1,503
	Mount Mercy College	6	9	2	2	5	15	1	268	10	318
	Northwestern College	0	0	0	0	0	0	0	0	0	0
	Des Moines University	2	42	38	4	183	40	1	1,318	34	1,662
	Palmer College of Chiropractic	0	9	22	7	59	15	1	839	13	965
	St Ambrose University	26	52	30	3	11	26	0	641	5	794
	Simpson College	0	29	1	0	0	1	0	34	0	65
	Upper Iowa University	26	12	22	6	9	71	1	567	9	723
	Warburg College	0	0	0	0	0	0	0	0	0	0
	William Penn University	0	1	6	0	2	12	0	74	0	95
3 Private for-Profit, 4-year	Kaplan University - Mason City	0	6	1	0	0	2	0	15	0	24
	Kaplan University - Cedar Rapids	0	4	0	2	2	4	0	34	0	46
	Hamilton Technical College	0	0	0	0	0	0	0	0	0	0
	Ashford University	0	0	0	0	0	0	0	0	0	0
	Waldorf College	0	0	0	0	0	0	0	0	0	0
	Kaplan University - Davenport	0	6	2	1	0	14	0	44	1	68
	Kaplan University - Cedar Falls	0	0	0	0	1	6	0	43	0	50
	Kaplan University - Des Moines	0	17	5	1	3	7	0	55	0	88
	ITT Technical Institute-Clive	0	0	0	0	0	0	0	0	0	0
	ITT Technical Institute - Cedar Rapids	0	0	0	0	0	0	0	0	0	0
4 Community Colleges	Des Moines Area Community College	0	0	0	0	0	0	0	0	0	0
	Iowa Valley -- Ellsworth Community College	0	0	0	0	0	0	0	0	0	0
	Eastern Iowa Community College	0	0	0	0	0	0	0	0	0	0
	Hawkeye Community College	0	0	0	0	0	0	0	0	0	0
	Indian Hills Community College	0	0	0	0	0	0	0	0	0	0
	Iowa Central Community College	0	0	0	0	0	0	0	0	0	0
	Iowa Lakes Community College	0	0	0	0	0	0	0	0	0	0
	Iowa Western Community College	0	0	0	0	0	0	0	0	0	0
	Kirkwood Community College	0	0	0	0	0	0	0	0	0	0
	Iowa Valley -- Marshalltown Community College	0	0	0	0	0	0	0	0	0	0
	North Iowa Area Community College	0	0	0	0	0	0	0	0	0	0
	Northeast Iowa Community College	0	0	0	0	0	0	0	0	0	0
	Northwest Iowa Community College	0	0	0	0	0	0	0	0	0	0
	Southeastern Community College	0	0	0	0	0	0	0	0	0	0
	Southwestern Community College	0	0	0	0	0	0	0	0	0	0
	Western Iowa Tech Community College	0	0	0	0	0	0	0	0	0	0
5 Private Not-for-Profit, 2-year	St Lukes College	0	0	0	0	0	0	0	0	0	0
6 Private for-Profit, 2-year	Capri College	0	0	0	0	0	0	0	0	0	0
	Capri College	0	0	0	0	0	0	0	0	0	0
	Iowa School of Beauty	0	0	0	0	0	0	0	0	0	0
	Faust Institution of Cosmetology	0	0	0	0	0	0	0	0	0	0
	Iowa School of Beauty	0	0	0	0	0	0	0	0	0	0
	La' James International College	0	0	0	0	0	0	0	0	0	0
	La' James International College	0	0	0	0	0	0	0	0	0	0
	LaJames College of Hairstyling	0	0	0	0	0	0	0	0	0	0
	La' James International College	0	0	0	0	0	0	0	0	0	0
	Iowa School of Beauty	0	0	0	0	0	0	0	0	0	0
	La' James International College	0	0	0	0	0	0	0	0	0	0
	La' James International College	0	0	0	0	0	0	0	0	0	0
	Capri College	0	0	0	0	0	0	0	0	0	0
	Iowa School of Beauty	0	0	0	0	0	0	0	0	0	0
	EQ School of Hair Design	0	0	0	0	0	0	0	0	0	0
	Vatterott College	0	0	0	0	0	0	0	0	0	0
	Faust Institution of Cosmetology	0	0	0	0	0	0	0	0	0	0
<b>Totals</b>		<b>4,423</b>	<b>2,142</b>	<b>779</b>	<b>77</b>	<b>878</b>	<b>756</b>	<b>18</b>	<b>17,322</b>	<b>670</b>	<b>27,117</b>



**Exhibit D**  
**Iowa College Student Aid Commission**  
**Student and Faculty Ethnic Diversity**  
**Fall 2014**  
**Undergraduate Enrollment in Iowa Colleges and Universities by Race/Ethnicity**  
**Undergraduate (Full-time and Part-time) Iowa Residents Only**

		Non-Resident Alien	Race/Ethnicity Unknown	Hispanic or Latino	American Indian or Alaska Native	Asian	Black or African American	Native Hawaiian or Pacific Islander	White	Two or More Races/Ethnicities	Total Graduate
1	Regent Universities										
	Iowa State University	11	880	735	45	570	350	15	15,483	389	18,478
	University of Iowa	0	846	667	16	488	289	12	9,529	293	12,140
	University of Northern Iowa	0	181	278	19	79	211	6	8,104	174	9,052
2	Private Not-for-Profit, 4-year										
	Allen College	0	18	0	0	5	2	2	328	1	362
	AIB College of Business	5	364	32	2	8	25	1	393	11	841
	Briar Cliff University	0	0	41	4	15	18	0	538	6	622
	Buena Vista University	4	139	78	12	22	20	1	1,476	16	1,768
	Central College	0	32	25	4	12	6	1	1,001	6	1,087
	Clarke University	0	20	4	0	5	7	0	513	8	557
	Coe College	0	45	11	2	3	4	0	622	12	699
	Cornell College	1	6	6	0	2	2	0	157	2	176
	Divine Word College	0	0	0	0	0	0	0	0	0	0
	Dordt College	0	62	4	1	3	4	0	462	0	536
	Drake University	15	21	29	1	44	31	0	855	17	1,013
	University of Dubuque	0	44	31	6	8	41	0	626	21	777
	Emmaus Bible College	2	5	3	0	1	2	1	67	1	82
	Faith Baptist Bible College	0	0	1	1	1	3	2	114	2	124
	Graceland University	4	19	20	0	3	6	3	457	4	516
	Grand View University	0	138	58	6	55	90	0	1,291	45	1,683
	Grinnell College	0	1	4	0	9	4	0	123	6	147
	Iowa Wesleyan College	0	61	7	3	2	3	0	217	4	297
	Loras College	0	22	13	1	4	6	0	484	9	539
	Luther College	0	3	18	3	11	8	0	676	14	733
	Maharishi University of Management	0	1	3	0	1	0	0	33	4	42
	Mercy College of Health Sciences	0	7	19	2	19	33	0	661	3	744
	Morningside College	1	48	42	4	8	7	2	722	20	854
	Mount Mercy College	0	70	21	4	19	45	1	1,145	22	1,327
	Northwestern College	0	26	11	2	4	3	0	590	10	649
	Des Moines University	0	0	0	0	0	0	0	0	0	0
	Palmer College of Chiropractic	0	0	0	0	1	2	0	12	1	16
	St Ambrose University	0	58	53	2	14	23	2	960	20	1,132
	Simpson College	1	186	18	10	18	12	0	1,132	17	1,394
	Upper Iowa University	3	41	38	1	12	87	1	1,627	23	1,833
	Wartburg College	0	25	18	1	14	18	0	1,001	22	1,099
	William Penn University	0	35	61	7	11	92	1	924	16	1,147
3	Private for-Profit, 4-year										
	Kaplan University - Mason City	0	35	5	0	1	2	0	103	0	146
	Kaplan University - Cedar Rapids	0	5	13	3	5	31	1	307	0	365
	Hamilton Technical College	0	1	8	1	0	20	0	64	2	96
	Ashford University	68	4	12	1	2	18	1	169	4	279
	Waldorf College	0	1	4	1	3	6	0	264	2	281
	Kaplan University - Davenport	1	30	12	0	3	32	0	148	0	226
	Kaplan University - Cedar Falls	0	1	7	1	1	16	0	233	0	259
	Kaplan University - Des Moines	0	78	24	2	11	41	2	420	0	578
	ITT Technical Institute-Clive	0	11	12	0	3	20	0	96	4	146
	ITT Technical Institute - Cedar Rapids	0	0	0	0	0	0	0	1	0	1
4	Community Colleges										
	Des Moines Area Community College	0	1,007	1,498	87	838	1,394	14	17,753	569	23,160
	Iowa Valley -- Ellsworth Community College	0	86	34	3	0	35	2	517	16	693
	Eastern Iowa Community College	0	310	610	30	134	366	16	5,456	222	7,144
	Hawkeye Community College	0	0	151	13	59	423	4	4,443	89	5,182
	Indian Hills Community College	0	219	160	9	32	163	2	3,326	53	3,964
	Iowa Central Community College	0	266	399	22	81	257	6	4,076	54	5,161
	Iowa Lakes Community College	0	38	67	8	37	28	5	2,046	11	2,240
	Iowa Western Community College	0	51	185	52	49	114	6	2,659	0	3,116
	Kirkwood Community College	27	991	562	68	222	948	15	9,996	327	13,156
	Iowa Valley -- Marshalltown Community College	40	178	269	43	35	42	3	1,328	22	1,960
	North Iowa Area Community College	0	0	113	7	29	62	1	2,469	30	2,711
	Northeast Iowa Community College	4	91	62	8	13	88	3	4,284	24	4,577
	Northwest Iowa Community College	1	49	68	4	15	3	2	1,306	17	1,465
	Southeastern Community College	0	83	107	29	30	87	3	2,126	64	2,529
	Southwestern Community College	0	1	26	3	9	20	0	1,376	28	1,463
	Western Iowa Tech Community College	21	734	720	78	153	166	12	3,674	74	5,632
5	Private Not-for-Profit, 2-year										
	St Lukes College	0	12	6	0	0	2	0	108	3	131
6	Private for-Profit, 2-year										
	Capri College	0	0	2	0	0	7	0	90	3	102
	Capri College	0	1	3	1	2	7	0	108	2	124
	Iowa School of Beauty	0	0	3	1	0	1	0	18	0	23
	Faust Institution of Cosmetology	0	0	1	0	0	0	0	14	0	15
	Iowa School of Beauty	0	0	12	0	6	14	2	70	3	107
	La' James International College	0	4	3	0	1	6	0	26	0	40
	La' James International College	0	0	5	0	3	9	0	48	0	65
	LaJames College of Hairstyling	0	0	3	0	0	1	0	42	0	46
	La' James International College	0	1	1	0	1	4	0	22	0	29
	Iowa School of Beauty	0	0	2	0	0	3	0	40	0	45
	La' James International College	0	2	1	0	1	6	0	8	0	18
	La' James International College	0	1	1	0	0	8	0	18	5	33
	Capri College	0	0	10	1	1	4	0	54	1	71
	Iowa School of Beauty	0	0	5	1	3	0	0	14	0	23
	EQ School of Hair Design	0	0	0	0	0	0	0	14	0	14
	Vatterott College	0	9	11	0	2	17	1	84	0	124
	Faust Institution of Cosmetology	0	0	2	0	0	2	0	15	1	20
	<b>Totals</b>	<b>209</b>	<b>7,704</b>	<b>7,548</b>	<b>636</b>	<b>3,256</b>	<b>5,927</b>	<b>152</b>	<b>121,756</b>	<b>2,829</b>	<b>150,026</b>



**Exhibit E**  
**Iowa College Student Aid Commission**  
**Student and Faculty Ethnic Diversity**  
**Fall 2014**  
**Graduate Enrollment in Iowa Colleges and Universities by Race/Ethnicity**  
**Graduate (Full-time and Part-time) Iowa Residents Only**

		Non-Resident Alien	Race/Ethnicity Unknown	Hispanic or Latino	American Indian or Alaska Native	Asian	Black or African American	Native Hawaiian or Pacific Islander	White	Two or More Races/Ethnicities	Total Graduate
1	Regent Universities										
	Iowa State University	4	68	56	3	45	47	1	1,243	18	1,485
	University of Iowa	0	822	126	11	207	66	1	3,246	429	4,908
	University of Northern Iowa	0	49	20	3	14	38	0	1,302	13	1,439
2	Private Not-for-Profit, 4-year										
	Allen College	0	5	1	0	1	4	0	174	1	186
	AIB College of Business	0	0	0	0	0	0	0	0	0	0
	Briar Cliff University	0	0	3	1	0	4	0	56	0	64
	Buena Vista University	0	35	2	1	2	2	0	214	0	256
	Central College	0	0	0	0	0	0	0	0	0	0
	Clarke University	0	20	1	0	2	2	0	152	0	177
	Coe College	0	0	0	0	0	0	0	1	0	1
	Cornell College	0	0	0	0	0	0	0	0	0	0
	Divine Word College	0	0	0	0	0	0	0	0	0	0
	Dordt College	0	19	0	0	0	0	0	12	0	31
	Drake University	13	21	34	3	19	27	0	1,108	15	1,240
	University of Dubuque	1	66	4	1	2	8	0	107	0	189
	Emmaus Bible College	0	0	0	0	0	0	0	0	0	0
	Faith Baptist Bible College	0	0	0	0	3	1	0	30	1	35
	Graceland University	0	13	1	1	2	0	1	138	1	157
	Grand View University	0	2	3	0	0	3	0	49	0	57
	Grinnell College	0	0	0	0	0	0	0	0	0	0
	Iowa Wesleyan College	0	0	0	0	0	0	0	0	0	0
	Loras College	0	2	0	0	1	1	0	67	0	71
	Luther College	0	0	0	0	0	0	0	0	0	0
	Maharishi University of Management	0	4	2	0	3	2	0	54	4	69
	Mercy College of Health Sciences	0	0	0	0	0	0	0	0	0	0
	Morningside College	0	217	22	1	3	5	2	1,155	0	1,405
	Mount Mercy College	0	9	2	1	5	15	1	267	10	310
	Northwestern College	0	0	0	0	0	0	0	0	0	0
	Des Moines University	0	13	6	2	23	4	0	482	7	537
	Palmer College of Chiropractic	0	1	3	3	5	3	0	192	2	209
	St Ambrose University	0	30	22	3	6	17	0	454	4	536
	Simpson College	0	29	1	0	0	1	0	33	0	64
	Upper Iowa University	2	6	4	1	3	11	0	180	2	209
	Wartburg College	0	0	0	0	0	0	0	0	0	0
	William Penn University	0	1	3	0	2	11	0	69	0	86
3	Private for-Profit, 4-year										
	Kaplan University - Mason City	0	4	1	0	0	2	0	11	0	18
	Kaplan University - Cedar Rapids	0	4	0	2	2	4	0	34	0	46
	Hamilton Technical College	0	0	0	0	0	0	0	0	0	0
	Ashford University	0	0	0	0	0	0	0	0	0	0
	Waldorf College	0	0	0	0	0	0	0	0	0	0
	Kaplan University - Davenport	0	2	0	1	0	7	0	28	1	39
	Kaplan University - Cedar Falls	0	0	0	0	1	4	0	39	0	44
	Kaplan University - Des Moines	0	16	4	1	3	7	0	53	0	84
	ITT Technical Institute-Clive	0	0	0	0	0	0	0	0	0	0
	ITT Technical Institute - Cedar Rapids	0	0	0	0	0	0	0	0	0	0
4	Community Colleges										
	Des Moines Area Community College	0	0	0	0	0	0	0	0	0	0
	Iowa Valley -- Elsworth Community College	0	0	0	0	0	0	0	0	0	0
	Eastern Iowa Community College	0	0	0	0	0	0	0	0	0	0
	Hawkeye Community College	0	0	0	0	0	0	0	0	0	0
	Indian Hills Community College	0	0	0	0	0	0	0	0	0	0
	Iowa Central Community College	0	0	0	0	0	0	0	0	0	0
	Iowa Lakes Community College	0	0	0	0	0	0	0	0	0	0
	Iowa Western Community College	0	0	0	0	0	0	0	0	0	0
	Kirkwood Community College	0	0	0	0	0	0	0	0	0	0
	Iowa Valley -- Marshalltown Community College	0	0	0	0	0	0	0	0	0	0
	North Iowa Area Community College	0	0	0	0	0	0	0	0	0	0
	Northeast Iowa Community College	0	0	0	0	0	0	0	0	0	0
	Northwest Iowa Community College	0	0	0	0	0	0	0	0	0	0
	Southeastern Community College	0	0	0	0	0	0	0	0	0	0
	Southwestern Community College	0	0	0	0	0	0	0	0	0	0
	Western Iowa Tech Community College	0	0	0	0	0	0	0	0	0	0
5	Private Not-for-Profit, 2-year										
	St Lukes College	0	0	0	0	0	0	0	0	0	0
6	Private for-Profit, 2-year										
	Capri College	0	0	0	0	0	0	0	0	0	0
	Capri College	0	0	0	0	0	0	0	0	0	0
	Iowa School of Beauty	0	0	0	0	0	0	0	0	0	0
	Faust Institution of Cosmetology	0	0	0	0	0	0	0	0	0	0
	Iowa School of Beauty	0	0	0	0	0	0	0	0	0	0
	La' James International College	0	0	0	0	0	0	0	0	0	0
	La' James International College	0	0	0	0	0	0	0	0	0	0
	LaJames College of Hairstyling	0	0	0	0	0	0	0	0	0	0
	La' James International College	0	0	0	0	0	0	0	0	0	0
	Iowa School of Beauty	0	0	0	0	0	0	0	0	0	0
	La' James International College	0	0	0	0	0	0	0	0	0	0
	La' James International College	0	0	0	0	0	0	0	0	0	0
	Capri College	0	0	0	0	0	0	0	0	0	0
	Iowa School of Beauty	0	0	0	0	0	0	0	0	0	0
	EQ School of Hair Design	0	0	0	0	0	0	0	0	0	0
	Vatterott College	0	0	0	0	0	0	0	0	0	0
	Faust Institution of Cosmetology	0	0	0	0	0	0	0	0	0	0
	<b>Totals</b>	<b>20</b>	<b>1,458</b>	<b>321</b>	<b>39</b>	<b>354</b>	<b>296</b>	<b>6</b>	<b>10,950</b>	<b>508</b>	<b>13,952</b>



**Exhibit F**  
**Iowa College Student Aid Commission**  
**Student and Faculty Ethnic Diversity**  
**Fall 2014**  
**Total Enrollment and Enrollment of Minority Population Groups**  
**Includes Full - and Part-Time Enrollments**

		Total Enrollment	Enrollment Under Grad Students	Enrollment Grad Students	Total Students Racial/Ethnic Minority Groups	Undergraduate Students Racial/Ethnic Minority Groups	Graduate Students Racial/Ethnic Minority Groups
1	Regent Universities						
	Iowa State University	33,843	28,893	4,950	4,036	3,562	474
	University of Iowa	31,387	22,354	9,033	4,640	3,271	1,369
	University of Northern Iowa	11,928	10,142	1,786	1,066	936	130
2	Private Not-for-Profit, 4-year						
	Allen College	573	379	194	26	20	6
	AIB College of Business	1,014	1,014	0	116	116	0
	Briar Cliff University	1,135	1,041	94	208	191	17
	Buena Vista University	2,295	2,035	260	188	181	7
	Central College	1,411	1,411	0	106	106	0
	Clarke University	1,200	949	251	103	97	6
	Coe College	1,436	1,435	1	252	252	0
	Cornell College	1,071	1,071	0	272	272	0
	Divine Word College	124	124	0	53	53	0
	Dordt College	1,454	1,395	59	48	48	0
	Drake University	5,062	3,364	1,698	613	438	175
	University of Dubuque	2,118	1,764	354	473	454	19
	Emmaus Bible College	216	216	0	32	32	0
	Faith Baptist Bible College	292	250	42	22	17	5
	Graceland University	2,510	1,686	824	492	380	112
	Grand View University	2,064	2,005	59	368	361	7
	Grinnell College	1,734	1,734	0	439	439	0
	Iowa Wesleyan College	494	494	0	67	67	0
	Loras College	1,547	1,468	79	165	163	2
	Luther College	2,385	2,385	0	210	210	0
	Maharishi University of Management	1,323	291	1,032	186	99	87
	Mercy College of Health Sciences	774	774	0	81	81	0
	Morningside College	2,824	1,321	1,503	197	154	43
	Mount Mercy College	1,762	1,444	318	165	130	35
	Northwestern College	1,205	1,205	0	117	117	0
	Des Moines University	1,662	0	1,662	300	0	300
	Palmer College of Chiropractic	999	34	965	125	8	117
	St Ambrose University	3,508	2,714	794	420	345	75
	Simpson College	1,725	1,660	65	115	113	2
	Upper Iowa University	5,849	5,126	723	1,308	1,190	118
	Wartburg College	1,661	1,661	0	307	307	0
	William Penn University	1,793	1,698	95	493	473	20
3	Community College						
	Kaplan University - Mason City	220	196	24	18	15	3
	Kaplan University - Cedar Rapids	427	381	46	65	57	8
	Hamilton Technical College	145	145	0	38	38	0
	Ashford University	696	696	0	203	203	0
	Waldorf College	1,424	1,424	0	413	413	0
	Kaplan University - Davenport	432	364	68	101	83	18
	Kaplan University - Cedar Falls	317	267	50	34	27	7
	Kaplan University - Des Moines	687	599	88	100	84	16
	ITT Technical Institute—Clive	147	147	0	40	40	0
	ITT Technical Institute – Cedar Rapids	1	1	0	0	0	0
4	Private for-Profit, 4-year or above						
	Des Moines Area Community College	23,526	23,526	0	4,470	4,470	0
	Iowa Valley -- Ellsworth Community College	949	949	0	254	254	0
	Eastern Iowa Community College	8,143	8,143	0	1,688	1,688	0
	Hawkeye Community College	5,291	5,291	0	780	780	0
	Indian Hills Community College	4,412	4,412	0	520	520	0
	Iowa Central Community College	5,686	5,686	0	1,139	1,139	0
	Iowa Lakes Community College	2,648	2,648	0	306	306	0
	Iowa Western Community College	5,118	5,118	0	1,231	1,231	0
	Kirkwood Community College	14,268	14,268	0	2,456	2,456	0
	Iowa Valley -- Marshalltown Community College	2,042	2,042	0	450	450	0
	North Iowa Area Community College	2,950	2,950	0	326	326	0
	Northeast Iowa Community College	4,934	4,934	0	218	218	0
	Northwest Iowa Community College	1,568	1,568	0	115	115	0
	Southeastern Community College	2,987	2,987	0	381	381	0
	Southwestern Community College	1,600	1,600	0	139	139	0
	Western Iowa Tech Community College	6,399	6,399	0	1,425	1,425	0
5	Private Not-for-Profit, 2-year						
	St Lukes College	251	251	0	41	41	0
6	Private for-Profit, 2-year						
	Capri College	140	140	0	13	13	0
	Capri College	124	124	0	15	15	0
	Iowa School of Beauty	23	23	0	5	5	0
	Faust Institution of Cosmetology	16	16	0	1	1	0
	Iowa School of Beauty	107	107	0	37	37	0
	La' James International College	42	42	0	11	11	0
	La' James International College	66	66	0	17	17	0
	LaJames College of Hairstyling	75	75	0	20	20	0
	La' James International College	32	32	0	7	7	0
	Iowa School of Beauty	45	45	0	5	5	0
	La' James International College	26	26	0	10	10	0
	La' James International College	33	33	0	14	14	0
	Capri College	109	109	0	23	23	0
	Iowa School of Beauty	41	41	0	17	17	0
	EQ School of Hair Design	17	17	0	1	1	0
	Vatterott College	124	124	0	31	31	0
	Faust Institution of Cosmetology	20	20	0	5	5	0
	<b>Totals</b>	<b>230,686</b>	<b>203,569</b>	<b>27,117</b>	<b>34,992</b>	<b>31,814</b>	<b>3,178</b>



**Exhibit G**  
**Iowa College Student Aid Commission**  
**Student and Faculty Ethnic Diversity**  
**Fall 2014**  
**Total Enrollment and Enrollment of Minority Population Groups - Iowa Residents Only**  
**Includes Full - and Part-Time Enrollments**

		Total Enrollment	Enrollment Under Grad Students	Enrollment Grad Students	Total Students Racial/Ethnic Minority Groups	Undergraduate Students Racial/Ethnic Minority Groups	Graduate Students Racial/Ethnic Minority Groups
1 Regent Universities	Iowa State University	19,963	18,478	1,485	2,274	2,104	170
	University of Iowa	17,048	12,140	4,908	2,605	1,765	840
	University of Northern Iowa	10,491	9,052	1,439	855	767	88
2 Private Not-for-Profit,4-year	Allen College	548	362	186	17	10	7
	ATB College of Business	841	841	0	79	79	0
	Briar Cliff University	686	622	64	92	84	8
	Buena Vista University	2,024	1,768	256	156	149	7
	Central College	1,087	1,087	0	54	54	0
	Clarke University	734	557	177	29	24	5
	Coe College	700	699	1	32	32	0
	Cornell College	176	176	0	12	12	0
	Divine Word College	0	0	0	0	0	0
	Dordt College	567	536	31	12	12	0
	Drake University	2,253	1,013	1,240	220	122	98
	University of Dubuque	966	777	189	122	107	15
	Emmaus Bible College	82	82	0	8	8	0
	Faith Baptist Bible College	159	124	35	15	10	5
	Graceland University	673	516	157	42	36	6
	Grand View University	1,740	1,683	57	260	254	6
	Grinnell College	147	147	0	23	23	0
	Iowa Wesleyan College	297	297	0	19	19	0
	Loras College	610	539	71	35	33	2
	Luther College	733	733	0	54	54	0
	Maharishi University of Management	111	42	69	19	8	11
	Mercy College of Health Sciences	744	744	0	76	76	0
	Morningside College	2,259	854	1,405	116	83	33
	Mount Mercy College	1,637	1,327	310	146	112	34
	Northwestern College	649	649	0	30	30	0
	Des Moines University	537	0	537	42	0	42
	Palmer College of Chiropractic	225	16	209	20	4	16
	St Ambrose University	1,668	1,132	536	166	114	52
	Simpson College	1,458	1,394	64	77	75	2
	Upper Iowa University	2,042	1,833	209	183	162	21
	Wartburg College	1,099	1,099	0	73	73	0
	William Penn University	1,233	1,147	86	204	188	16
3 Private for-Profit,4-year	Kaplan University - Mason City	164	146	18	11	8	3
	Kaplan University - Cedar Rapids	411	365	46	61	53	8
	Hamilton Technical College	96	96	0	31	31	0
	Ashford University	279	279	0	38	38	0
	Waldorf College	281	281	0	16	16	0
	Kaplan University - Davenport	265	226	39	56	47	9
	Kaplan University - Cedar Falls	303	259	44	30	25	5
	Kaplan University - Des Moines	662	578	84	95	80	15
	ITT Technical Institute-Clive	146	146	0	39	39	0
	ITT Technical Institute - Cedar Rapids	1	1	0	0	0	0
4 Community Colleges	Des Moines Area Community College	23,160	23,160	0	4,400	4,400	0
	Iowa Valley -- Ellsworth Community College	693	693	0	90	90	0
	Eastern Iowa Community College	7,144	7,144	0	1,378	1,378	0
	Hawkeye Community College	5,182	5,182	0	739	739	0
	Indian Hills Community College	3,964	3,964	0	419	419	0
	Iowa Central Community College	5,161	5,161	0	819	819	0
	Iowa Lakes Community College	2,240	2,240	0	156	156	0
	Iowa Western Community College	3,116	3,116	0	406	406	0
	Kirkwood Community College	13,156	13,156	0	2,142	2,142	0
	Iowa Valley -- Marshalltown Community College	1,960	1,960	0	414	414	0
	North Iowa Area Community College	2,711	2,711	0	242	242	0
	Northeast Iowa Community College	4,577	4,577	0	198	198	0
	Northwest Iowa Community College	1,465	1,465	0	109	109	0
	Southeastern Community College	2,529	2,529	0	320	320	0
	Southwestern Community College	1,463	1,463	0	86	86	0
	Western Iowa Tech Community College	5,632	5,632	0	1,203	1,203	0
5 Private Not-for-Profit,2-year	St Lukes College	131	131	0	11	11	0
6 Private for-Profit, 2-year	Capri College	102	102	0	12	12	0
	Capri College	124	124	0	15	15	0
	Iowa School of Beauty	23	23	0	5	5	0
	Faust Institution of Cosmetology	15	15	0	1	1	0
	Iowa School of Beauty	107	107	0	37	37	0
	La' James International College	40	40	0	10	10	0
	La' James International College	65	65	0	17	17	0
	LaJames College of Hairstyling	46	46	0	4	4	0
	La' James International College	29	29	0	6	6	0
	Iowa School of Beauty	45	45	0	5	5	0
	La' James International College	18	18	0	8	8	0
	La' James International College	33	33	0	14	14	0
	Capri College	71	71	0	17	17	0
	Iowa School of Beauty	23	23	0	9	9	0
	EQ School of Hair Design	14	14	0	0	0	0
	Vatterott College	124	124	0	31	31	0
	Faust Institution of Cosmetology	20	20	0	5	5	0
	<b>Totals</b>	<b>163,978</b>	<b>150,026</b>	<b>13,952</b>	<b>21,872</b>	<b>20,348</b>	<b>1,524</b>



**Exhibit H**  
**Iowa College Student Aid Commission**  
**Student and Faculty Ethnic Diversity**  
**Fall 2014**  
**State Financial Aid to Minority Students at Iowa Colleges and Universities**  
**Awards in Four Major Programs in the 2013-2014 Academic Year**

		Iowa Tuition Grant (ITG) Awards- Total	Iowa Tuition Grant (ITG) Awards to Minority Students	Iowa Grants (IG)- Total	Iowa Grants (IG) to Minority Students	Vocational Technical Tuition Grants (IVTTG)-Total	Vocational Technical Tuition Grants (IVTTG) to Minority	All Iowa Opportunity Scholarships - Total	All Iowa Opportunity Scholarships to Minority Students	State Aid Awards Total for these four Programs	State Aid Awards Total for these four Programs to Minority
1 Regent Universities	Iowa State University	0	0	145	34	0	0	76	34	221	68
	University of Iowa	0	0	80	33	0	0	49	31	129	64
	University of Northern Iowa	0	0	94	2	0	0	27	11	121	13
2 Private Not-for-Profit,4-year	Allen College	282	10	11	1	0	0	1	0	294	11
	AIB College of Business	573	83	22	2	0	0	1	1	596	86
	Briar Cliff University	432	66	8	3	0	0	6	2	446	71
	Buena Vista University	1,585	151	34	11	0	0	6	0	1,625	162
	Central College	602	39	11	1	0	0	6	0	619	40
	Clarke University	379	19	6	0	0	0	0	0	385	19
	Coe College	407	16	12	2	0	0	3	0	422	18
	Cornell College	120	11	2	0	0	0	1	0	123	11
	Divine Word College	0	0	0	0	0	0	0	0	0	0
	Dordt College	332	4	4	0	0	0	1	1	337	5
	Drake University	461	78	7	2	0	0	4	1	472	81
	University of Dubuque	484	53	7	1	0	0	2	1	493	55
	Emmaus Bible College	46	3	5	0	0	0	0	0	51	3
	Faith Baptist Bible College	81	5	6	1	0	0	0	0	87	6
	Graceland University	205	16	7	1	0	0	5	0	217	17
	Grand View University	1,100	192	26	3	0	0	1	1	1,127	196
	Grinnell College	85	16	1	1	0	0	0	0	86	17
	Iowa Wesleyan College	279	28	9	2	0	0	0	0	288	30
	Loras College	299	21	4	0	0	2	0	0	303	23
	Luther College	339	16	5	0	0	0	1	0	345	16
	Maharishi University of Management	31	8	1	1	0	0	0	0	32	9
	Mercy College of Health Sciences	505	64	12	4	0	0	1	0	518	68
	Morningside College	539	55	13	1	0	0	2	0	554	56
	Mount Mercy College	785	77	13	3	0	0	2	0	800	80
	Northwestern College	360	18	10	1	0	0	1	0	371	19
	Des Moines University	0	0	0	0	0	0	0	0	0	0
	Palmer College of Chiropractic	0	0	0	0	0	0	0	0	0	0
	St Ambrose University	585	56	9	0	0	0	1	0	595	56
	Simpson College	836	62	20	4	0	0	6	1	862	67
	Upper Iowa University	1,241	153	29	3	0	0	2	0	1,272	156
	Wartburg College	578	52	9	3	0	0	5	2	592	57
	William Penn University	781	113	18	0	0	0	0	0	799	113
3 Private for-Profit,4-year	Kaplan University - Mason City	116	6	5	0	0	0	0	0	121	6
	Kaplan University - Cedar Rapids	363	24	21	0	0	0	0	0	384	24
	Hamilton Technical College	0	0	0	0	0	0	0	0	0	0
	Ashford University	621	8	0	0	0	0	0	0	621	8
	Waldorf College	90	6	4	1	0	0	0	0	94	7
	Kaplan University - Davenport	379	29	10	0	0	1	0	0	389	30
	Kaplan University - Cedar Falls	253	9	11	1	0	0	0	0	264	10
	Kaplan University - Des Moines	497	35	16	2	0	0	0	0	513	37
	ITT Technical Institute-Clive	0	0	0	0	0	0	0	0	0	0
	ITT Technical Institute - Cedar Rapids	0	0	0	0	0	0	0	0	0	0
4 Community Colleges	Des Moines Area Community College	0	0	101	27	523	77	34	8	658	112
	Iowa Valley -- Ellsworth Community College	0	0	12	8	18	0	3	0	33	8
	Eastern Iowa Community College	0	0	43	8	181	35	1	0	225	43
	Hawkeye Community College	0	0	24	9	247	19	16	3	287	31
	Indian Hills Community College	0	0	16	0	189	20	12	1	217	21
	Iowa Central Community College	0	0	15	5	137	11	16	5	168	21
	Iowa Lakes Community College	0	0	12	3	85	5	8	0	105	8
	Iowa Western Community College	0	0	17	3	133	13	18	1	168	17
	Kirkwood Community College	0	0	81	35	435	51	15	2	531	88
	Iowa Valley -- Marshalltown Community College	0	0	9	2	39	6	2	1	50	9
	North Iowa Area Community College	0	0	14	3	97	5	6	0	117	8
	Northeast Iowa Community College	0	0	21	2	156	8	3	1	180	11
	Northwest Iowa Community College	0	0	3	0	78	6	0	0	81	6
	Southeastern Community College	0	0	19	4	105	15	0	0	124	19
	Southwestern Community College	0	0	10	1	51	3	11	0	72	4
	Western Iowa Tech Community College	0	0	15	4	182	28	30	14	227	46
5 Private Not-for-Profit,2-year	St Lukes College	81	7	2	1	0	0	0	0	83	8
6 Private for-Profit, 2-year	Capri College	0	0	0	0	0	0	0	0	0	0
	Capri College	0	0	0	0	0	0	0	0	0	0
	Iowa School of Beauty	0	0	0	0	0	0	0	0	0	0
	Faust Institution of Cosmetology	0	0	0	0	0	0	0	0	0	0
	Iowa School of Beauty	0	0	0	0	0	0	0	0	0	0
	La' James International College	0	0	0	0	0	0	0	0	0	0
	La' James International College	0	0	0	0	0	0	0	0	0	0
	LaJames College of Hairstyling	0	0	0	0	0	0	0	0	0	0
	La' James International College	0	0	0	0	0	0	0	0	0	0
	Iowa School of Beauty	0	0	0	0	0	0	0	0	0	0
	La' James International College	0	0	0	0	0	0	0	0	0	0
	La' James International College	0	0	0	0	0	0	0	0	0	0
	Capri College	0	0	0	0	0	0	0	0	0	0
	Iowa School of Beauty	0	0	0	0	0	0	0	0	0	0
	EQ School of Hair Design	0	0	0	0	0	0	0	0	0	0
	Vatterott College	0	0	0	0	0	0	0	0	0	0
	Faust Institution of Cosmetology	0	0	0	0	0	0	0	0	0	0
<b>Totals</b>		<b>16,732</b>	<b>1,609</b>	<b>1,121</b>	<b>239</b>	<b>2,656</b>	<b>305</b>	<b>385</b>	<b>122</b>	<b>20,894</b>	<b>2,275</b>



Exhibit I  
Iowa College Student Aid Commission  
Student and Faculty Ethnic Diversity  
Fall 2014  
Faculty at Iowa Colleges and Universities

		Total Faculty	Faculty Excluding Non-Resident Alien and Race/Ethnicity Unknown	Faculty from Minority Population
1 Regent Universities	Iowa State University	1,892	1,804	353
	University of Iowa	2,813	2,492	438
	University of Northern Iowa	552	536	79
2 Private Not-for-Profit,4-year	Allen College	53	53	4
	ATB College of Business	64	64	3
	Briar Cliff University	69	69	2
	Buena Vista University	391	374	18
	Central College	101	101	10
	Clarke University	90	90	3
	Coe College	170	169	10
	Cornell College	100	98	8
	Divine Word College	25	25	5
	Dordt College	183	142	2
	Drake University	279	275	46
	University of Dubuque	77	77	11
	Emmaus Bible College	34	34	5
	Faith Baptist Bible College	29	29	2
	Graceland University	90	89	8
	Grand View University	215	213	12
	Grinnell College	184	172	37
	Iowa Wesleyan College	96	84	3
	Loras College	153	153	7
	Luther College	246	238	18
	Maharishi University of Management	136	122	23
	Mercy College of Health Sciences	103	103	5
	Morningside College	237	226	1
	Mount Mercy College	84	82	8
	Northwestern College	138	80	2
	Des Moines University	98	94	12
	Palmer College of Chiropractic	82	82	7
	St Ambrose University	234	228	20
	Simpson College	198	155	10
	Upper Iowa University	595	419	64
	Wartburg College	168	167	11
	William Penn University	113	108	3
3 Private for-Profit,4-year	Kaplan University - Mason City	2	2	0
	Kaplan University - Cedar Rapids	26	15	1
	Hamilton Technical College	11	11	2
	Ashford University	68	30	2
	Waldorf College	46	45	1
	Kaplan University - Davenport	19	12	1
	Kaplan University - Cedar Falls	25	18	0
	Kaplan University - Des Moines	41	23	2
	ITT Technical Institute-Clive	28	27	1
	ITT Technical Institute -- Cedar Rapids	3	3	0
4 Community Colleges	Des Moines Area Community College	360	360	27
	Iowa Valley -- Ellsworth Community College	87	81	8
	Eastern Iowa Community College	644	632	59
	Hawkeye Community College	447	447	26
	Indian Hills Community College	426	426	11
	Iowa Central Community College	438	387	8
	Iowa Lakes Community College	207	162	1
	Iowa Western Community College	129	129	3
	Kirkwood Community College	268	267	14
	Iowa Valley -- Marshalltown Community College	97	91	5
	North Iowa Area Community College	155	142	1
	Northeast Iowa Community College	403	391	6
	Northwest Iowa Community College	155	155	2
	Southeastern Community College	190	184	11
	Southwestern Community College	105	105	4
	Western Iowa Tech Community College	355	342	17
5 Private Not-for-Profit,2-year	St Lukes College	40	40	1
6 Private for-Profit, 2-year	Capri College	43	43	0
	Capri College	33	33	2
	Iowa School of Beauty	5	5	0
	Faust Institution of Cosmetology	4	4	1
	Iowa School of Beauty	19	19	1
	La' James International College	6	6	0
	La' James International College	7	7	0
	LaJames College of Hairstyling	12	12	1
	La' James International College	6	6	1
	Iowa School of Beauty	5	5	0
	La' James International College	4	4	0
	La' James International College	5	5	0
	Capri College	23	23	2
	Iowa School of Beauty	5	5	0
	EQ School of Hair Design	9	9	1
	Vatterott College	22	22	1
	Faust Institution of Cosmetology	5	5	0
	<b>Totals</b>	<b>15,080</b>	<b>13,987</b>	<b>1,474</b>