

Iowa College Student Aid Commission

Student and Faculty Ethnic Diversity Report

March 2013



Iowa College Student Aid Commission Student and Faculty Ethnic Diversity Report March 2013

Executive Summary

The Iowa College Student Aid Commission annual Student and Faculty Ethnic Diversity Report summarizes trends in representation by minority population groups among students, faculty, and state financial aid recipients at Iowa colleges and universities. The report has been published each year since 1992 and is provided to the Governor and General Assembly of Iowa as directed by Iowa Code §261.2 (Duties of commission). The report is based on an annual survey of Iowa college and university officials. The Commission and staff are grateful for the assistance of college and university staff who contribute the information compiled for this report.

Findings of the 2013 report include the following:

- In the fall of 2012, some 30,565 minority students were enrolled at Iowa colleges and universities.
- Like enrollment overall, enrollment of racial and ethnic minority students in Iowa's colleges and universities has expanded steadily since 1992, when the Ethnic Diversity Survey was first conducted. Between fall 1992 and fall 2012, enrollment of racial and ethnic minority students in Iowa's colleges and universities more than doubled.
- In the fall of 2012, racial and ethnic minorities represented 12.9% of total enrollment in Iowa's colleges and universities. Iowa residents represented 61.5% of minority enrollment.
- Among Iowa-resident students enrolled at Iowa colleges and universities, 77% are white, non-Hispanic.
- Of Iowa-resident minority students attending college in Iowa during the previous academic year (2010-11), 10.8% were awarded an Iowa Grant, Iowa Tuition Grant, Iowa Vocational-Technical Tuition Grant, or All Iowa Opportunity Scholarship. Of the grants and scholarships awarded through these state programs in 2011-12, some 9.7% were awarded to students who are members of minority population groups.

Please note that some apparent trends reported in this report partly reflect changes in agency methods of counting students and faculty by race/ethnicity implemented in the fall of 2010. Methods for collecting the data in this report are described under Report Background.

For this report, minority students and faculty include those from the following population groups: Hispanic or Latino; American Indian or Alaska Native; Asian; Black or African American; Native Hawaiian or other Pacific Islander; two or more races/ethnicities.

Detailed data tables are provided as attached exhibits.

Contents

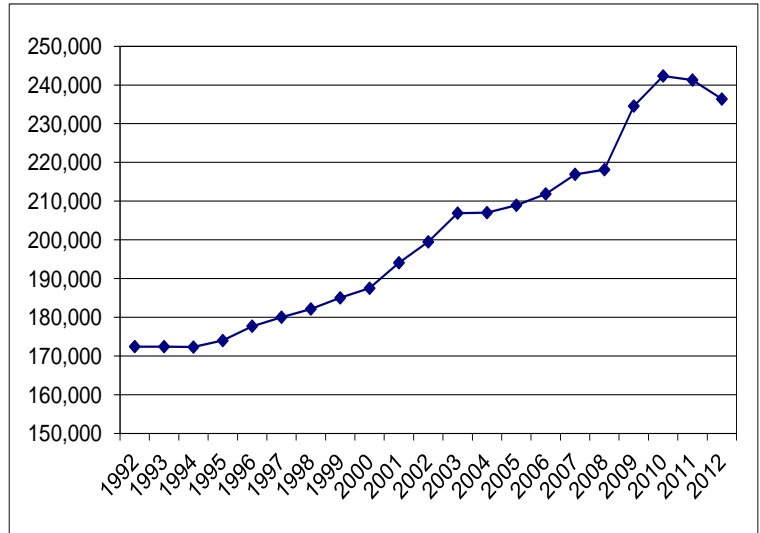
Executive Summary	2
Postsecondary Enrollment 1992 - 2012	3
Minority Participation in State-Appropriated Student Financial Aid Programs	5
Report Background.....	6
References.....	7
Exhibits	8

Postsecondary Enrollment 1992 - 2012

In the fall of 2012, a total of 236,366 full- and part-time graduate and undergraduate students were enrolled in Iowa postsecondary institutions, including Regent universities, independent four-year colleges and universities, community colleges, proprietary colleges, and specialized graduate medical schools. Note that this figure represents enrollment at Iowa degree-granting institutions, which annually report student ethnic diversity data to the Iowa College Student Aid Commission.

Total enrollment in Iowa's colleges and universities has increased steadily from 1992 until 2012. In the fall of 1992, the first year of the Ethnic Diversity Report, full-time and part-time enrollment in Iowa was 172,435. Between 1992 and 2012, total enrollment expanded 37%.

Total Enrollment in Iowa Colleges and Universities

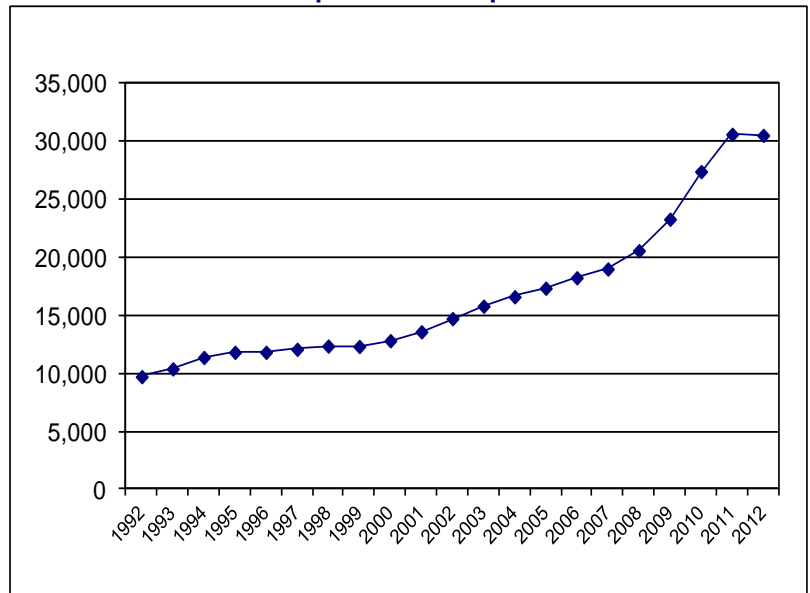


Source: Iowa College Enrollment Report and Iowa College Student Aid Commission Report of Ethnic Diversity. Total enrollments include full- and part-time undergraduate, graduate, and professional students.

Like enrollment overall, the enrollment of racial and ethnic minority students in Iowa's colleges and universities has also increased since 1992. In 1992, Iowa colleges and universities enrolled 9,744 students from racial or ethnic minority groups; in 2012, this figure was 30,565—an increase of 214%.

Trends in minority postsecondary education enrollments parallel trends in state demographics more generally. Between 1992 and 2010, the percentage of Iowans whose race and ethnicity was other than white, non-Hispanic increased from 4.0% to 11.6% (U.S. Census Bureau). In the years between 1992 and 2010, the total population of Iowa increased by 255,386—from 2.81 million to 3.06 million. Over the same period, Iowa's ethnic minority population grew by 234,089, accounting for 92% of the state's population expansion during those years.

Enrollment by Students from Racial and Ethnic Minority Population Groups

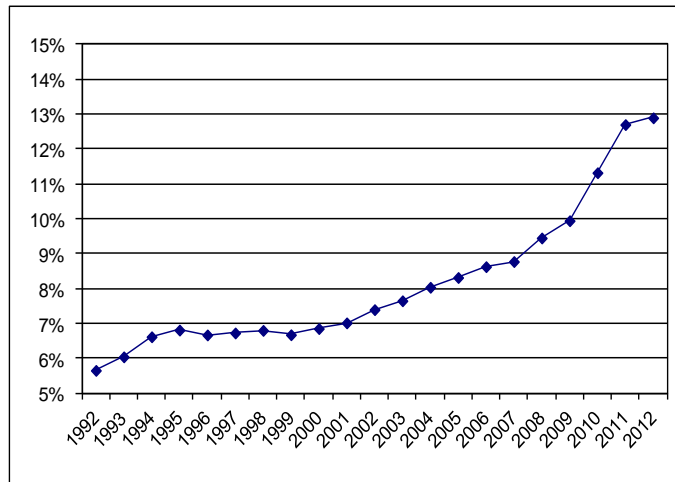


Enrollments include full- and part-time undergraduate, graduate, and professional students.

Between 1992 and 2012, total enrollment in Iowa colleges and universities increased by nearly 64,000 students, from 172,435 to 236,366 and the percentage of total enrollment represented by racial and ethnic minorities in Iowa's colleges and universities expanded from 5.7% to 12.9%. Growth in minority enrollments between 1992 and 2012, then, significantly outpaced overall enrollment growth during these two decades. Between 1992 and 2012, total enrollment grew by 37%, and enrollment of racial and ethnic minority students increased 214%. As a percentage of total enrollment, minority enrollment began its steady expansion in the early 2000s.

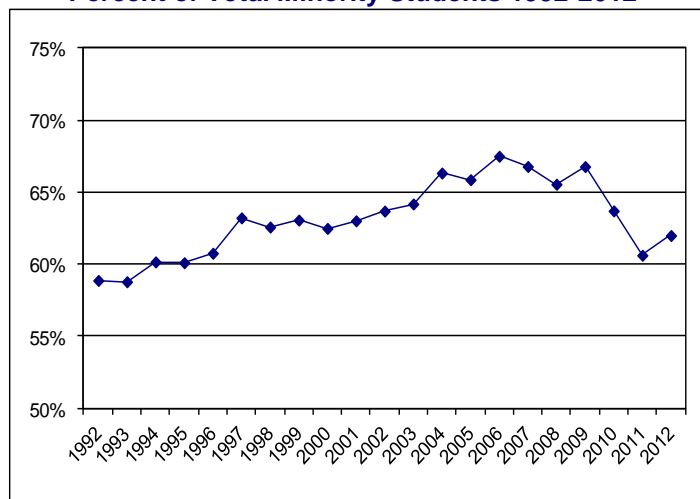
In 2012, Iowa residents represented 62.0% of minority enrollment. This percentage was only slightly lower in 1992, when 58.9% of the racial and ethnic minority students at Iowa's colleges and universities were residents of Iowa. While enrollment by racial and ethnic minority students in Iowa's colleges and universities has increased, residents of Iowa represent a fairly consistent share of these enrollments.

Minority Enrollment as a Percentage of Total Enrollment in Iowa Colleges and Universities: Percent of Total Enrollments 1992-2012



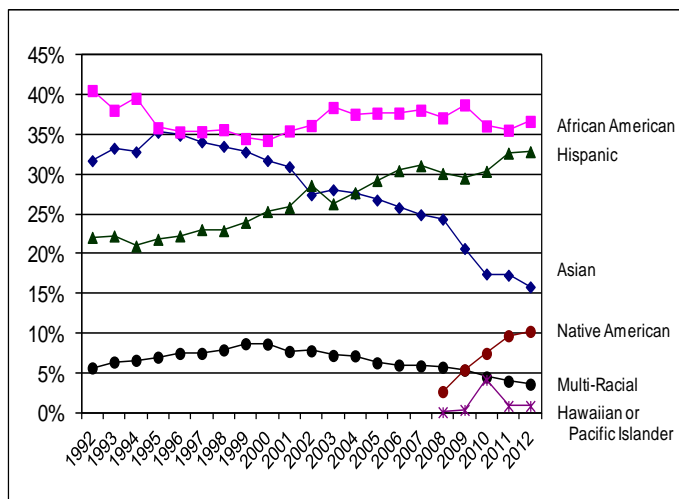
Enrollments include full- and part-time undergraduate, graduate, and professional students.

Iowa-Resident Minority Students at Iowa Colleges and Universities: Percent of Total Minority Students 1992-2012



Enrollments include full- and part-time undergraduate, graduate, and professional students.

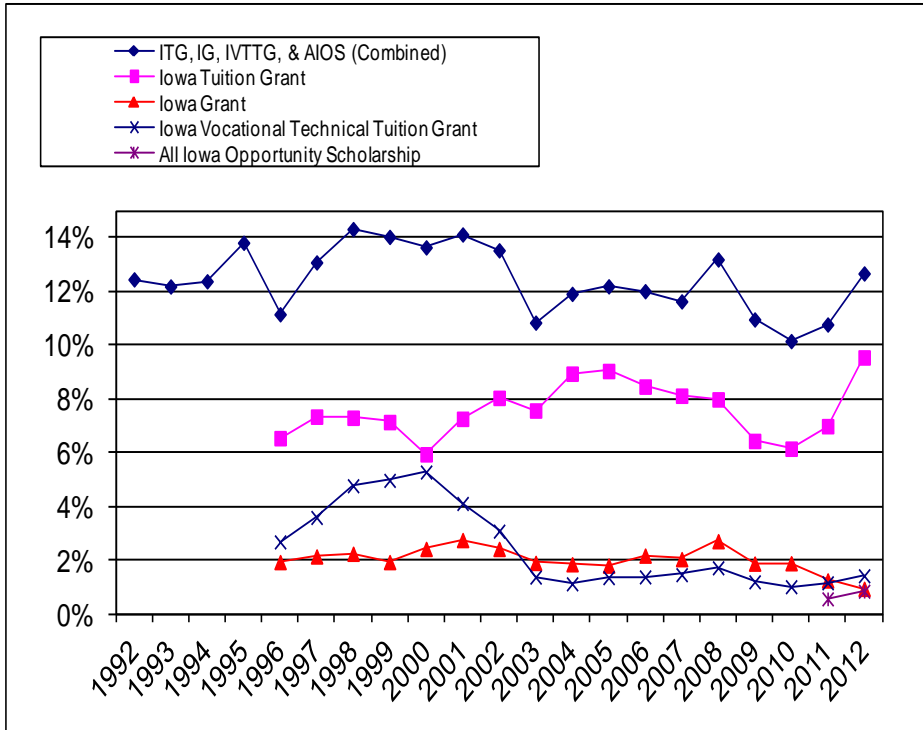
Iowa-Resident Minority Students by Population Group: 1992-2012



Enrollments include full- and part-time undergraduate, graduate, and professional students.

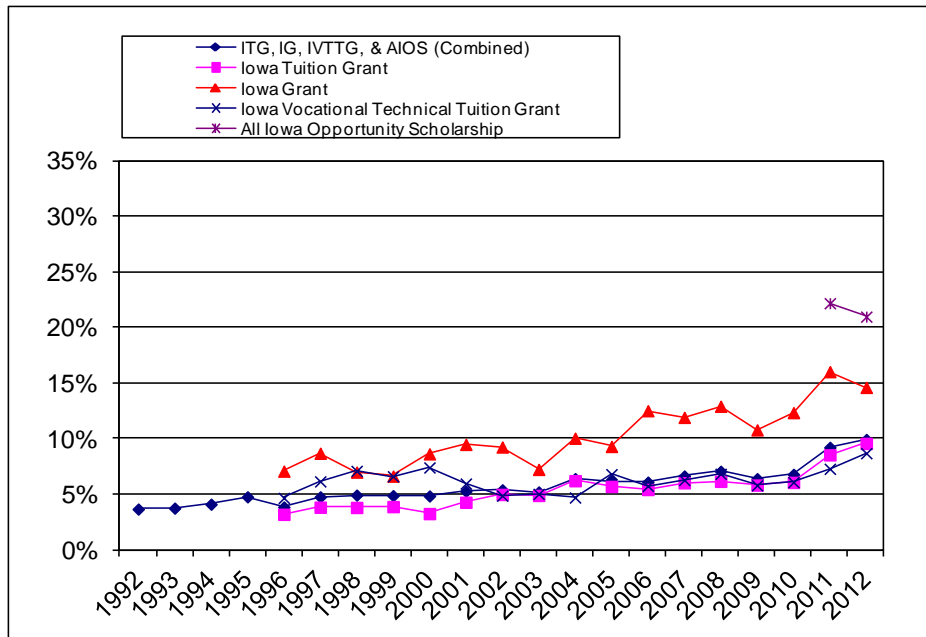
Minority Participation in State-Appropriated Student Financial Aid Programs

Percent of Minority Students Receiving Grants and Scholarships



For the Student and Faculty Ethnic Diversity Report, Iowa institutions also report the race/ethnicity of recipients of state financial aid for four major state aid programs: Iowa Grants, Iowa Tuition Grants, Iowa Vocational-Technical Tuition Grants, and All Iowa Opportunity Scholarships.

In the 2011-2012 academic year, some 11.9% of Iowa resident minority students attending college in Iowa were awarded one or more of these grants. The chart at left tracks the history, since 1992, of grant program participation by Iowa-resident minority students. Participation by program is reported beginning with the 1995-1996 academic year. Participation in the All Iowa Opportunity Grant program by race/ethnicity is reported for the first time in 2010-11.



The chart at left shows minority participation in these four state aid programs as a percentage of total participation. In 2011-2012 academic year, 9.6% of Iowa Tuition Grants, 8.7% of Iowa Vocational-Technical Tuition Grants, 14.6% of Iowa Grants, and 20.9% of All Iowa Opportunity Scholarships were awarded to minority students.

Report Background

Iowa Code §261.2 directs the Iowa College Student Aid Commission to collect data on racial and ethnic diversity at Iowa colleges and universities and to provide a report to the Governor and General Assembly of Iowa. The Commission collects this information by means of its annual Ethnic Diversity Survey, one of three principal surveys the Commission administers to Iowa postsecondary institutions annually.

Since it was first administered in 1992 until the fall of 2009, the content of the Commission's ethnic diversity survey remained essentially unchanged. During this period, the survey collected information about the representation of students and faculty from various minority population groups for both U.S. citizens and non-resident aliens. With the fall 2010 survey, the Commission's survey form implemented new race and ethnicity categories consistent with U.S. Department of Education guidelines for reporting race and ethnicity. In 2010, for the first time, the survey allowed institutions to report the (unduplicated headcount) number of students and faculty in the following race/ethnicity categories:

1. Non-Resident Alien
2. Race and Ethnicity Unknown
3. White

In previous years the ethnic diversity survey collected the race/ethnicity of non-resident aliens rather than treating "non-resident alien" as a separate and unique race/ethnicity category for reporting purposes. For this reason, apparent trends in minority representation are partly conflated with shifts attributable to this one-time change in methods of counting students and faculty by race/ethnicity.

The system used for reporting race and ethnicity data in the Commission's annual ethnic diversity survey is consistent with the U.S. Department of Education's guidance on reporting such data as it pertains to the Integrated Postsecondary Education Data System (IPEDS) (Federal Register, 2007). According to this guidance, when reporting race and ethnicity data, educational institutions report aggregated racial and ethnic data in the following seven categories:

Race and Ethnicity Categories Used for this Report

1. Non-Resident Alien.
2. Race and Ethnicity Unknown.
3. Hispanic or Latino. A person of Cuban, Mexican, Puerto Rican, South or Central American, or other Spanish culture or origin, regardless of race. The term "Spanish origin" can be used in addition to "Hispanic/Latino or Latino."
4. American Indian or Alaska Native. A person having origins in any of the original peoples of North and South America (including Central America), and who maintains a tribal affiliation or community attachment.
5. Asian. A person having origins in any of the original peoples of the Far East, Southeast Asia, or the Indian subcontinent including, for example, Cambodia, China, India, Japan, Korea, Malaysia, Pakistan, the Philippine Islands, Thailand, and Vietnam.
6. Black or African American. A person having origins in any of the Black racial groups of Africa.
7. Native Hawaiian or Other Pacific Islander. A person having origins in any of the original peoples of Hawaii, Guam, Samoa, or other Pacific Islands.
8. White. A person having origins in any of the original peoples of Europe, the Middle East, or North Africa.
9. Two or more races.

References

Duties of commission, Iowa Code §261.2 (2011).

Federal Register 72:202 (Friday, October 19, 2007)
<http://edocket.access.gpo.gov/2007/pdf/E7-20613.pdf>.

U. S. Census Bureau. (2011). American Community Survey. Washington, DC; Author.
Retrieved January, 2013 from <http://factfinder2.census.gov>.

For information about this report, contact:

Joe Dullard
Statistical Research Analyst
Iowa College Student Aid Commission
603 E 12th Street 5th Floor
Des Moines IA 50319-9017

joe.dullard@iowa.gov
Phone: 515.725.3406
www.iowacollegeaid.gov

Exhibits

- Exhibit A - Summary of Student and Faculty Ethnic Diversity at Iowa Colleges and Universities 1992 -2012
- Exhibit B - Undergraduate Enrollment in Iowa Colleges and Universities by Race/Ethnicity
- Exhibit C - Graduate Enrollment in Iowa Colleges and Universities by Race/Ethnicity
- Exhibit D - Undergraduate Enrollment in Iowa Colleges and Universities by Race/Ethnicity - Iowa Residents
- Exhibit E - Graduate Enrollment in Iowa Colleges and Universities by Race/Ethnicity - Iowa Residents
- Exhibit F - Total Enrollment and Enrollment of Minority Population Groups
- Exhibit G - Total Enrollment and Enrollment of Minority Population Groups - Iowa Residents Only
- Exhibit H - State Financial Aid to Minority Students at Iowa Colleges and Universities - Awards in Four Major Programs* in the 2011-2012 Academic Year
- Exhibit I - Faculty at Iowa Colleges and Universities



Exhibit A
IOWA COLLEGE STUDENT AID COMMISSION
Student and Faculty Ethnic Diversity at Iowa Colleges and Universities
1992-2012
Summary

	1992	1993	1994	1995	1996	1997	1998	1999	2000	2001	2002	2003	2004	2005	2006	2007	2008	2009	2010	2011	2012	
Enrollment																						
Total Full- and Part-Time, Undergraduate and Graduate	172,435	172,421	172,303	173,987	177,899	180,023	182,149	185,018	187,498	194,081	199,484	206,902	207,027	208,929	211,867	216,921	218,119	224,556	242,325	241,279	236,366	
Enrollment by Students from Minority Population Groups																						
Iowa-Resident Minority* Students	5,737	6,122	6,659	7,120	7,201	7,655	7,751	7,788	8,028	8,580	9,396	10,159	11,038	11,448	12,340	12,714	13,516	15,390	17,484	18,919	18,808	
Iowa-Resident Minority Students Percent of Total Enrollment	3.3%	3.6%	4.0%	4.1%	4.1%	4.3%	4.3%	4.2%	4.3%	4.4%	4.7%	4.9%	5.3%	5.5%	5.8%	5.9%	6.2%	6.6%	7.2%	7.8%	8.0%	
Total Students from Minority Population Groups	9,744	10,414	11,400	11,845	11,850	12,107	12,384	12,348	12,846	13,614	14,751	15,826	16,638	17,377	18,279	19,034	20,615	23,455	27,442	29,929	30,565	
Total Minority Students Percent of Total Enrollment	5.7%	6.0%	6.6%	6.8%	6.7%	6.8%	6.7%	6.7%	6.9%	7.0%	7.4%	7.6%	8.0%	8.3%	8.6%	8.8%	9.5%	10.0%	11.3%	12.4%	12.9%	
Iowa Tuition Grants, Vocational-Technical Tuition Grants, Iowa Grants and All Iowa Opportunity Scholarships**																						
Number Awarded to Students from Minority Population Groups	714	726	849	983	803	1,001	1,110	1,093	1,095	1,212	1,271	1,101	1,315	1,386	1,482	1,474	1,677	1,483	1,682	1,883	2,329	
Percent Awarded to Students from Minority Population Groups	3.7%	3.7%	4.1%	4.8%	3.8%	4.8%	4.9%	4.9%	4.8%	5.3%	5.4%	5.2%	6.4%	6.2%	6.1%	6.6%	7.1%	6.4%	6.8%	9.2%	9.8%	
Faculty																						
Full- and Part-Time Faculty	10,052	10,698	11,406	12,163	11,799	12,462	12,283	12,475	13,096	12,717	13,048	13,277	13,989	14,573	13,622	13,717	13,985	14,699	13,237	15,337	15,894	
Number of Faculty from Minority Population Groups	696	753	796	844	814	855	870	911	971	998	1,047	1,126	1,195	1,229	1,244	1,253	1,266	1,293	1,152	1,340	1,496	
Percent of Faculty from Minority Population Groups	6.9%	7.0%	7.0%	6.9%	6.9%	6.9%	7.1%	7.3%	7.4%	7.8%	8.0%	8.5%	8.5%	8.4%	9.1%	9.1%	9.3%	8.8%	8.7%	8.7%	9.4%	

* For this report, minority students and faculty include those from the following population groups: Hispanic or Latino; American Indian or Alaska Native; Asian; Black or African American; Native Hawaiian or Other Pacific Islander; two or more races/ethnicities.

** Participation by race/ethnicity in state grant and scholarship programs is reported for the prior complete academic year; e.g., 2011-12 awards are reported in 2011. The number of awards through the All Iowa Opportunity Scholarship program are reported beginning in 2013.


Source: Iowa College Student Aid Commission Annual Student and Faculty Ethnic Diversity Report



Exhibit B
IOWA COLLEGE STUDENT AID COMMISSION
Student and Faculty Ethnic Diversity
Fall 2012
Undergraduate Enrollment in Iowa Colleges and Universities by Race/Ethnicity

College Name	Undergraduate (Full-Time and Part-Time)									
	Non-Resident Alien	Race/Ethnicity Unknown	Hispanic or Latino	American Indian or Alaska Native	Asian	Black or African American	Native Hawaiian or Pacific Islander	White	Two Or More Races/Ethnicities	Total Undergraduate
Regent Universities										
Iowa State University	1,989	811	987	54	705	659	24	19,910	416	25,555
University of Iowa	2,052	869	1,166	48	688	557	25	16,261	333	21,999
University of Northern Iowa	319	165	280	21	107	300	4	9,316	143	10,655
Private Not-for-Profit, 4-year										
AIB College of Business	25	115	41	5	24	37	0	650	24	921
Allen College	2	0	1	0	4	8	0	365	5	385
Briar Cliff University	38	0	95	16	17	66	2	774	22	1,030
Buena Vista University	47	131	92	11	20	39	0	1,970	20	2,330
Central College	18	40	46	4	19	31	3	1,303	22	1,486
Clarke College	11	0	26	1	8	27	2	892	0	967
Coe College	28	79	54	2	37	52	0	1,062	50	1,364
Cornell College	73	62	129	10	46	64	3	759	28	1,174
Des Moines University	0	0	0	0	0	0	0	0	0	0
Divine Word College	101	0	8		13	2	0	0	0	131
Dordt College	137	38	18	3	7	21	7	1,152	0	1,383
Drake University	256	57	93	63	110	113	3	2,675	52	3,422
Emmaus Bible College	0	9	14	1	4	5	0	174	2	209
Faith Baptist Bible College	0	0	2	3	3	4	2	247	0	261
Graceland University	123	66	103	9	17	124	15	1,074	47	1,578
Grand View College	36	191	61	10	55	158	5	1,613	66	2,195
Grinnell College	202	107	124	4	117	92	0	959	69	1,674
Iowa Wesleyan College	48	87	41	2	2	58	3	393	11	645
Loras College	49	76	74	2	10	26	3	1,240	17	1,497
Luther College	132	14	69	1	42	34	1	2,133	47	2,473
Maharishi University of Management	47	4	50	3	9	33	1	194	15	356
Mercy College of Health Sciences	0	38	24	6	30	23	0	724	1	846
Morningside College	20	77	69	6	7	17	3	1,023	20	1,242
Mount Mercy College	38	86	40	3	26	56	2	1,255	7	1,513
Northwestern College	36	16	56	8	11	25	0	1,078	11	1,241
Palmer College of Chiropractic	0	0	1	0	2	1	0	42	2	48
Simpson College	35	144	163	2	29	96	2	2,290	33	2,794
St Ambrose University	20	68	37	5	20	40	0	1,608	46	1,844
University of Dubuque	20	176	10	20	27	211	3	1,178	31	1,676
Upper Iowa University	1,111	360	181	24	57	786	3	3,068	21	5,619
Wartburg College	143	24	30	2	16	98	1	1,395	38	1,747
William Penn University	32	75	122	11	19	226	4	1,176	22	1,687
Community Colleges										
Des Moines Area Community College	152	1,278	1,290	97	673	1,621	18	18,071	485	23,685
Eastern Iowa Community College	52	380	703	59	160	671	21	6,287	141	8,474
Hawkeye Community College	8	17	50	5	2	155	0	809	12	1,100
Indian Hills Community College	90	0	175	19	72	495	3	5,110	89	6,053
Iowa Central Community College	0	435	138	25	42	155	5	4,041	44	4,885
Iowa Lakes Community College	75	258	383	17	82	486	6	4,849	60	6,216
Iowa Valley - Ellsworth Community Co.	0	156	116	18	46	101	2	2,586	12	3,037
Iowa Valley - Marshalltown Community Co.	114	141	432	109	78	563	16	5,901	13	7,367
Iowa Western Community College	296	6,376	336	62	204	880	10	8,306	191	16,661
Kirkwood Community College	51	217	108	25	18	91	2	71	10	2,005
North Iowa Area Community College	29	15	144	7	26	109	1	2,917	31	3,279
Northeast Iowa Community College	1	159	82	10	20	127	4	4,591	24	5,018
Northwest Iowa Community College	1	45	42	11	8	4	0	1,493	17	1,621
Southeastern Community College	17	68	119	24	35	134	2	2,647	66	3,112
Southwestern Community College	9	18	36	6	9	27	1	1,530	30	1,666
Western Iowa Tech Community College	0	1,018	670	143	119	182	10	4,260	22	6,424
Private for-profit, 4-year or above										
Ashford University	76	24	85	3	3	151	1	657	12	1,012
Hamilton Technical College	0	2	19	0	3	30	1	182	5	242
ITT Technical Institute - Cedar Rapids	0	49	3	0	0	5	0	50	0	107
ITT Technical Institute - Clive	0	115	11	1	3	10	0	69	2	211
Kaplan University - Cedar Falls	0	25	5	3	3	67	0	325	1	429
Kaplan University - Cedar Rapids	0	4	0	4	2	36	0	318	0	364
Kaplan University - Council Bluffs	0	4	1	1	6	39	1	372	0	424
Kaplan University - Davenport	0	6	1	0	1	10	2	152	0	172
Kaplan University - Des Moines	0	15	1	4	7	50	0	519	0	596
Kaplan University - Mason City	0	11	0	1	0	11	0	171	1	195
University of Phoenix-Des Moines										
Waldorf College	0	12	59	4	18	136	0	639	10	878
Private Not-for-Profit, 2-year										
St Lukes College	0	0	16	1	7	1	1	165	2	193
Private For-Profit, 2-year										
Vatterott College	0	3	9	1	0	27	0	167	4	211
Total	8,159	14,836	9,341	1,020	3,955	10,463	228	157,208	2,905	209,584

Source: Iowa College Student Aid Commission Annual Student and Faculty Ethnic Diversity Report

 Exhibit C IOWA COLLEGE STUDENT AID COMMISSION Student and Faculty Ethnic Diversity Fall 2012 Graduate Enrollment in Iowa Colleges and Universities by Race/Ethnicity											
College Name	Graduate (Full-Time and Part-Time)										Total Graduate
	Non-Resident Alien	Race/Ethnicity Unknown	Hispanic or Latino	American Indian or Alaska Native	Asian	Black or African American	Native Hawaiian or Pacific Islander	White	Two Or More Races/Ethnicities		
Regent Universities											
Iowa State University	1,521	264	147	7	96	129	1	2,998	30	5,189	
University of Iowa	1,524	939	339	35	398	280	10	5,887	87	9,499	
University of Northern Iowa	135	64	33	3	21	67	0	1,285	10	1,618	
Private Not-for-Profit, 4-year											
AIB College of Business	0	0	0	0	0	0	0	0	0	0	
Allen College	0	0	1	0	3	1	0	159	0	164	
Briar Cliff University	0	0	6	0	0	3	0	110	1	120	
Buena Vista University	0	35	1	0	1	0	0	49	0	86	
Central College	0	0	0	0	0	0	0	0	0	0	
Clarke College	0	0	3	0	2	2	1	216	0	224	
Coe College	0	0	0	0	0	0	0	3	0	3	
Cornell College	0	0	0	0	0	0	0	0	0	0	
Des Moines University	4	73	24	1	157	45	1	1,458	38	1,801	
Divine Word College	0	0	0	0	0	0	0	0	0	0	
Dordt College	0	1	0	0	0	0	0	19	0	20	
Drake University	34	17	24	1	66	59	0	935	14	1,905	
Emmaus Bible College	0	0	0	0	0	0	0	0	0	0	
Faith Baptist Bible College	0	0	0	0	4	2	0	33	0	39	
Graceland University	10	72	21	7	18	29	1	585	10	753	
Grand View College	0	0	0	0	1	3	1	32	0	37	
Grinnell College	0	0	0	0	0	0	0	0	0	0	
Iowa Wesleyan College	0	0	0	0	0	0	0	0	0	0	
Loras College	0	3	1	0	0	1	0	35	0	40	
Luther College	0	0	0	0	0	0	0	0	0	0	
Maharishi University of Management	655	5	6	0	10	46	1	47	7	777	
Mercy College of Health Sciences	0	0	0	0	0	0	0	0	0	0	
Morningside College	0	258	12	1	2	1	0	708	0	982	
Mount Mercy College	0	9	3	3	10	7	0	259	6	297	
Northwestern College	0	0	0	0	0	0	0	0	0	0	
Palmer College of Chiropractic	1	9	20	3	69	12	2	919	6	1,041	
Simpson College	16	84	38	3	11	23	0	697	5	877	
St Ambrose University	0	6	0	0	0	1	0	44	2	53	
University of Dubuque	31	44	8	2	2	11	1	235	0	334	
Upper Iowa University	5	2	11	0	7	0	1	433	1	533	
Wartburg College	0	0	0	0	0	0	0	0	0	0	
William Penn University	0	4	8	3	1	0	1	137	2	167	
Community Colleges											
Des Moines Area Community College	0	0	0	0	0	0	0	0	0	0	
Eastern Iowa Community College	0	0	0	0	0	0	0	0	0	0	
Hawkeye Community College	0	0	0	0	0	0	0	0	0	0	
Indian Hills Community College	0	0	0	0	0	0	0	0	0	0	
Iowa Central Community College	0	0	0	0	0	0	0	0	0	0	
Iowa Lakes Community College	0	0	0	0	0	0	0	0	0	0	
Iowa Valley -- Ellsworth Community Co.	0	0	0	0	0	0	0	0	0	0	
Iowa Valley -- Marshalltown Community Co.	0	0	0	0	0	0	0	0	0	0	
Iowa Western Community College	0	0	0	0	0	0	0	0	0	0	
Kirkwood Community College	0	0	0	0	0	0	0	0	0	0	
North Iowa Area Community College	0	0	0	0	0	0	0	0	0	0	
Northeast Iowa Community College	0	0	0	0	0	0	0	0	0	0	
Northwest Iowa Community College	0	0	0	0	0	0	0	0	0	0	
Southeastern Community College	0	0	0	0	0	0	0	0	0	0	
Southwestern Community College	0	0	0	0	0	0	0	0	0	0	
Western Iowa Tech Community College	0	0	0	0	0	0	0	0	0	0	
Private for-profit, 4-year or above											
Ashford University	0	0	0	0	0	0	0	0	0	0	
Hamilton Technical College	0	0	0	0	0	0	0	0	0	0	
ITT Technical Institute – Cedar Rapids	0	0	0	0	0	0	0	0	0	0	
ITT Technical Institute–Clive	0	0	0	0	0	0	0	0	0	0	
Kaplan University - Cedar Falls	0	1	1	1	0	12	0	44	0	59	
Kaplan University - Cedar Rapids	0	0	0	0	0	8	1	33	0	42	
Kaplan University - Council Bluffs	0	0	0	0	0	3	0	22	0	25	
Kaplan University - Davenport	0	0	0	0	0	1	0	14	0	15	
Kaplan University - Des Moines	0	4	0	0	4	5	1	45	0	59	
Kaplan University - Mason City	0	0	0	0	0	0	0	23	0	23	
University of Phoenix-Des Moines	0	0	0	0	0	0	0	0	0	0	
Waldorf College	0	0	0	0	0	0	0	0	0	0	
Private Not-for-Profit, 2-year											
St Lukes College	0	0	0	0	0	0	0	0	0	0	
Private For-Profit, 2-year											
Vatterott College	0	0	0	0	0	0	0	0	0	0	
Total	3936	1894	707	70	883	751	23	17464	219	26782	

Source: Iowa College Student Aid Commission Annual Student and Faculty Ethnic Diversity Report



Exhibit D
IOWA COLLEGE STUDENT AID COMMISSION
Student and Faculty Ethnic Diversity
Fall 2012

Undergraduate Enrollment in Iowa Colleges and Universities by Race/Ethnicity - Iowa Residents

College Name	Undergraduate (Full-Time and Part-Time) - Iowa Residents Only									
	Non-Resident Alien	Race/Ethnicity Unknown	Hispanic or Latino	American Indian or Alaska Native	Asian	Black or African American	Native Hawaiian or Pacific Islander	White	Two Or More Races/Ethnicities	Total Under-graduate
Regent Universities										
Iowa State University	0	601	565	33	513	305	13	14,753	269	17,052
University of Iowa	0	547	575	32	489	288	9	10,072	183	12,195
University of Northern Iowa	0	155	231	19	99	216	4	8,950	132	9,806
Private Not-for-Profit, 4-year										
AIB College of Business	1	111	34	5	23	23	0	606	20	823
Allen College	0	0	1	0	4	2	0	351	1	367
Briar Cliff University	0	0	49	10	12	16	1	491	7	586
Buena Vista University	0	119	73	11	15	20	0	1,767	15	2,020
Central College	0	27	18	4	18	11	1	1,065	16	1,160
Clarke College	0	0	7	1	6	5	1	545	0	565
Coe College	3	59	8	0	11	7	0	662	8	758
Cornell College	0	12	3	0	4	1	0	168	2	190
Des Moines University	0	0	0	0	0	0	0	0	0	0
Divine Word College	0	0	0	0	0	0	0	0	0	0
Dordt College	4	9	1	0	0	1	0	483	0	498
Drake University	0	35	16	2	38	39	2	882	16	1,114
Emmaus Bible College	0	1	1	0	3	1	0	79	0	85
Faith Baptist Bible College	0	0	0	2	2	3	0	142	0	149
Graceland University	4	18	13	2	2	11	4	392	8	454
Grand View College	0	171	45	10	52	100	2	1,485	43	1,908
Ginnell College	0	3	5	0	11	3	0	136	8	166
Iowa Wesleyan College	1	51	19	0	2	10	0	306	4	393
Loras College	0	27	10	2	2	2	0	519	9	571
Luther College	0	6	19	1	8	10	1	692	10	747
Maharishi University of Management	0	1	4	0	1	2	0	43	1	52
Mercy College of Health Sciences	0	35	23	6	30	23	0	695	1	813
Morningside College	0	55	34	2	7	6	3	691	15	813
Mount Mercy College	0	80	32	3	23	44	1	1,215	7	1,405
Northwestern College	0	10	13	2	6	5	0	610	3	649
Palmer College of Chiropractic	0	0	1	0	1	0	0	16	0	18
Simpson College	0	66	62	1	16	29	2	986	17	1,179
St Ambrose University	5	67	21	4	18	15	0	1,442	32	1,604
University of Dubuque	3	75	3	7	9	38	0	623	9	767
Upper Iowa University	0	790	0	0	0	114	0	12	0	2,058
Wartburg College	0	20	14	2	14	27	0	1,090	27	1,194
William Penn University	0	32	33	3	5	0	1	496	9	754
Community Colleges										
Des Moines Area Community College	0	1,257	1,272	95	667	1,540	18	17,947	476	23,272
Eastern Iowa Community College	0	337	622	48	113	528	20	5,711	132	7,511
Hawkeye Community College	0	0	0	0	0	0	0	478	0	872
Indian Hills Community College	0	0	172	17	53	486	3	5,055	87	5,873
Iowa Central Community College	0	419	104	25	38	117	3	3,820	41	4,567
Iowa Lakes Community College	0	223	361	14	75	226	6	4,729	46	5,680
Iowa Valley -- Ellsworth Community Co.	0	134	63	7	38	25	2	2,284	12	2,565
Iowa Valley -- Marshalltown Community Co.	0	91	252	75	46	110	8	4,798	10	5,390
Iowa Western Community College	23	5,878	295	60	188	748	8	8,025	176	15,401
Kirkwood Community College	0	0	0	0	0	0	0	0	10	1,917
North Iowa Area Community College	0	15	119	4	25	51	1	2,805	28	3,048
Northeast Iowa Community College	0	127	65	9	17	112	4	4,172	19	4,525
Northwest Iowa Community College	1	35	37	8	8	2	0	1,390	17	1,498
Southeastern Community College	1	55	91	19	26	113	1	2,251	58	2,615
Southwestern Community College	0	18	32	5	7	13	0	1,459	24	1,558
Western Iowa Tech Community College	0	948	553	107	101	154	8	3,751	19	5,641
Private for-profit, 4-year or above										
Ashford University	75	0	0	0	0	0	0	0	0	433
Hamilton Technical College	0	1	12	0	2	21	0	109	2	147
ITT Technical Institute -- Cedar Rapids	0	49	3	0	0	5	0	50	0	107
ITT Technical Institute--Clive	0	113	11	1	3	10	0	68	2	208
Kaplan University - Cedar Falls	0	10	4	3	2	47	0	220	1	287
Kaplan University - Cedar Rapids	0	4	0	4	2	36	0	314	0	360
Kaplan University - Council Bluffs	0	4	1	1	5	38	0	364	0	413
Kaplan University - Davenport	0	4	1	0	1	2	1	130	0	139
Kaplan University - Des Moines	0	15	1	4	7	50	0	509	0	586
Kaplan University - Mason City	0	5	0	0	0	10	0	155	1	171
University of Phoenix-Des Moines	0	0	0	0	0	0	0	0	0	0
Waldorf College	0	1	9	0	5	4	0	240	1	260
Private Not-for-Profit, 2-year										
St Lukes College	0	0	8	0	5	1	1	127	1	143
Private For-Profit, 2-year										
Vatterott College	0	0	0	0	0	0	0	0	0	0
Total	121	12,926	6,021	670	2,878	5,826	129	123,426	2,035	158,100

Source: Iowa College Student Aid Commission Annual Student and Faculty Ethnic Diversity Report



Exhibit E
IOWA COLLEGE STUDENT AID COMMISSION
Student and Faculty Ethnic Diversity
Fall 2012

Graduate Enrollment in Iowa Colleges and Universities by Race Ethnicity - Iowa Residents

College Name	Graduate (Full-Time and Part-Time) - Iowa Residents Only									Total Graduate
	Non-Resident Alien	Race/Ethnicity Unknown	Hispanic or Latino	American Indian or Alaska Native	Asian	Black or African American	Native Hawaiian or Pacific Islander	White	Two Or More Races/Ethnicities	
Regent Universities										
Iowa State University	0	81	57	5	45	39	1	1,629	14	1,871
University of Iowa	0	687	137	19	278	112	5	3,923	33	5,194
University of Northern Iowa	0	52	15	1	12	45	0	1,156	8	1,289
Private Not-for-Profit, 4-year										
AIB College of Business	0	0	0	0	0	0	0	0	0	0
Allen College	0	0	0	0	3	0	0	151	0	156
Briar Cliff University	0	0	5	0	0	0	0	71	1	77
Buena Vista University	0	32	0	0	1	0	0	49	0	82
Central College	0	0	0	0	0	0	0	0	0	0
Clarke College	0	0	3	0	2	2	0	159	0	166
Coe College	0	0	0	0	0	0	0	3	0	3
Cornell College	0	0	0	0	0	0	0	0	0	0
Des Moines University	0	35	9	0	18	2	0	477	4	545
Divine Word College	0	0	0	0	0	0	0	0	0	0
Dordt College	0	0	0	0	0	0	0	11	0	11
Drake University	0	25	32	1	11	46	0	481	4	1,358
Emmaus Bible College	0	0	0	0	0	0	0	0	0	0
Faith Baptist Bible College	0	0	0	0	0	0	0	11	0	11
Graceland University	0	15	0	0	1	0	1	137	0	154
Grand View College	0	0	0	0	1	3	1	32	0	37
Grinnell College	0	0	0	0	0	0	0	0	0	0
Iowa Wesleyan College	0	0	0	0	0	0	0	0	0	0
Loras College	0	3	1	0	0	1	0	30	0	35
Luther College	0	0	0	0	0	0	0	0	0	0
Maharishi University of Management	0	1	0	0	2	0	0	21	4	28
Mercy College of Health Sciences	0	0	0	0	0	0	0	0	0	0
Morningside College	0	250	11	1	2	1	0	684	0	949
Mount Mercy College	0	9	3	3	10	7	0	257	6	295
Northwestern College	0	0	0	0	0	0	0	0	0	0
Palmer College of Chiropractic	1	1	4	2	6	2	0	207	1	224
Simpson College	0	47	24	1	8	18	0	491	1	590
St Ambrose University	0	6	0	0	0	1	0	44	2	53
University of Dubuque	7	22	2	1	0	9	0	118	0	159
Upper Iowa University	1	0	0	0	0	17	25	0	0	293
Wartburg College	0	0	0	0	0	0	0	0	0	0
William Penn University	0	4	8	2	1	9	0	116	2	158
Community Colleges										
Des Moines Area Community College	0	0	0	0	0	0	0	0	0	0
Eastern Iowa Community College	0	0	0	0	0	0	0	0	0	0
Hawkeye Community College	0	0	0	0	0	0	0	0	0	0
Indian Hills Community College	0	0	0	0	0	0	0	0	0	0
Iowa Central Community College	0	0	0	0	0	0	0	0	0	0
Iowa Lakes Community College	0	0	0	0	0	0	0	0	0	0
Iowa Valley -- Ellsworth Community Co.	0	0	0	0	0	0	0	0	0	0
Iowa Valley -- Marshalltown Community Co.	0	0	0	0	0	0	0	0	0	0
Iowa Western Community College	0	0	0	0	0	0	0	0	0	0
Kirkwood Community College	0	0	0	0	0	0	0	0	0	0
North Iowa Area Community College	0	0	0	0	0	0	0	0	0	0
Northeast Iowa Community College	0	0	0	0	0	0	0	0	0	0
Northwest Iowa Community College	0	0	0	0	0	0	0	0	0	0
Southeastern Community College	0	0	0	0	0	0	0	0	0	0
Southwestern Community College	0	0	0	0	0	0	0	0	0	0
Western Iowa Tech Community College	0	0	0	0	0	0	0	0	0	0
Private for-profit, 4-year or above										
Ashford University	0	0	0	0	0	0	0	0	0	0
Hamilton Technical College	0	0	0	0	0	0	0	0	0	0
ITT Technical Institute -- Cedar Rapids	0	0	0	0	0	0	0	0	0	0
ITT Technical Institute--Clive	0	0	0	0	0	0	0	0	0	0
Kaplan University - Cedar Falls	0	1	0	0	0	9	0	32	0	42
Kaplan University - Cedar Rapids	0	0	0	0	0	8	1	33	0	42
Kaplan University - Council Bluffs	0	0	0	0	0	3	0	22	0	25
Kaplan University - Davenport	0	0	0	0	0	1	0	10	0	11
Kaplan University - Des Moines	0	3	0	0	4	5	1	44	0	57
Kaplan University - Mason City	0	0	0	0	0	0	0	17	0	17
University of Phoenix-Des Moines	0	0	0	0	0	0	0	0	0	0
Waldorf College	0	0	0	0	0	0	0	0	0	0
Private Not-for-Profit, 2-year										
StLukes College	0	0	0	0	0	0	0	0	0	0
Private For-Profit, 2-year										
Vatterott College	0	0	0	0	0	0	0	0	0	0
Total	9	1,274	311	36	405	340	35	10,416	80	13,932

Source: Iowa College Student Aid Commission Annual Student and Faculty Ethnic Diversity Report



Exhibit F
IOWA COLLEGE STUDENT AID COMMISSION
Student and Faculty Ethnic Diversity
Fall 2012
Total Enrollment and Enrollment of Minority Population Groups
Includes Full- and Part-Time Enrollments

College Name	Total Enrollment			Enrollment of Students from Racial & Ethnic Minority Groups		
	Total Enrollment	Enrollment - Undergraduate Students	Enrollment - Graduate Students	Total Students from Racial/Ethnic Minority Groups	Undergraduate Students from Racial/Ethnic Minority Groups	Graduate Students from Racial/Ethnic Minority Groups
Regent Universities						
Iowa State University	30,744	25,555	5,189	3,255	2,845	410
University of Iowa	31,498	21,999	9,499	3,966	2,817	1,149
University of Northern Iowa	12,273	10,655	1,618	989	855	134
Private Not-for-Profit, 4-year						
AIB College of Business	921	921	0	131	131	0
Allen College	549	385	164	23	18	5
Briar Cliff University	1,150	1,030	120	228	218	10
Buena Vista University	2,416	2,330	86	184	182	2
Central College	1,486	1,486	0	125	125	0
Clarke College	1,191	967	224	72	64	8
Coe College	1,367	1,364	3	195	195	0
Cornell College	1,174	1,174	0	280	280	0
Des Moines University	1,801	0	1,801	266	0	266
Divine Word College	131	131	0	23	23	0
Dordt College	1,403	1,383	20	56	56	0
Drake University	5,327	3,422	1,905	598	434	164
Emmaus Bible College	209	209	0	26	26	0
Faith Baptist Bible College	300	261	39	20	14	6
Graceland University	2,331	1,578	753	401	315	86
Grand View College	2,232	2,195	37	360	355	5
Grinnell College	1,674	1,674	0	406	406	0
Iowa Wesleyan College	645	645	0	117	117	0
Loras College	1,537	1,497	40	134	132	2
Luther College	2,473	2,473	0	194	194	0
Maharishi University of Management	1,133	356	777	181	111	70
Mercy College of Health Sciences	846	846	0	84	84	0
Morningside College	2,224	1,242	982	138	122	16
Mount Mercy College	1,810	1,513	297	163	134	29
Northwestern College	1,241	1,241	0	111	111	0
Palmer College of Chiropractic	1,089	48	1,041	118	6	112
Simpson College	3,671	2,794	877	405	325	80
St Ambrose University	1,897	1,844	53	151	148	3
University of Dubuque	2,010	1,676	334	326	302	24
Upper Iowa University	6,152	5,619	533	1,092	1,072	20
Warburg College	1,747	1,747	0	185	185	0
William Penn University	1,854	1,687	167	419	404	15
Community Colleges						
Des Moines Area Community College	23,685	23,685	0	4,184	4,184	0
Eastern Iowa Community College	8,474	8,474	0	1,755	1,755	0
Hawkeye Community College	1,100	1,100	0	224	224	0
Indian Hills Community College	6,053	6,053	0	853	853	0
Iowa Central Community College	4,885	4,885	0	409	409	0
Iowa Lakes Community College	6,216	6,216	0	1,034	1,034	0
Iowa Valley - Ellsworth Community Co.	3,037	3,037	0	295	295	0
Iowa Valley - Marshalltown Community Co.	7,367	7,367	0	1,211	1,211	0
Iowa Western Community College	16,661	16,661	0	1,683	1,683	0
Kirkwood Community College	2,005	2,005	0	254	254	0
North Iowa Area Community College	3,279	3,279	0	318	318	0
Northeast Iowa Community College	5,018	5,018	0	267	267	0
Northwest Iowa Community College	1,621	1,621	0	82	82	0
Southeastern Community College	3,112	3,112	0	380	380	0
Southwestern Community College	1,666	1,666	0	109	109	0
Western Iowa Tech Community College	6,424	6,424	0	1,146	1,146	0
Private for-profit, 4-year or above						
Ashford University	1,012	1,012	0	255	255	0
Hamilton Technical College	242	242	0	58	58	0
ITT Technical Institute - Cedar Rapids	107	107	0	8	8	0
ITT Technical Institute - Clive	211	211	0	27	27	0
Kaplan University - Cedar Falls	488	429	59	93	79	14
Kaplan University - Cedar Rapids	406	364	42	51	42	9
Kaplan University - Council Bluffs	449	424	25	51	48	3
Kaplan University - Davenport	187	172	15	15	14	1
Kaplan University - Des Moines	655	596	59	72	62	10
Kaplan University - Mason City	218	195	23	13	13	0
University of Phoenix-Des Moines	0	0	0	0	0	0
Waldorf College	878	878	0	227	227	0
Private Not-for-Profit, 2-year						
St Lukes College	193	193	0	28	28	0
Private For-Profit, 2-year						
Vatterott College	211	211	0	41	41	0
Total	236,366	209,584	26,782	30,565	27,912	2,653

Source: Iowa College Student Aid Commission Annual Student and Faculty Ethnic Diversity Report



Exhibit G
IOWA COLLEGE STUDENT AID COMMISSION
Student and Faculty Ethnic Diversity
Fall 2012
Total Enrollment and Enrollment of Minority Population Groups - Iowa Residents Only
Includes Full- and Part-Time Enrollments

College Name	Iowa-Resident Enrollment			Enrollment of Students from Racial & Ethnic Minority Groups - Iowa-Residents Only		
	Iowa Resident Total Enrollment	Iowa Resident Enrollment - Undergraduate Students	Iowa Resident Enrollment - Graduate Students	Total Students from Racial/Ethnic Minority Groups - Iowa Residents	Undergraduate Students from Racial/Ethnic Minority Groups - Iowa Residents	Graduate Students from Racial/Ethnic Minority Groups - Iowa Residents
Regent Universities						
Iowa State University	18,923	17,052	1,871	1,859	1,698	161
University of Iowa	17,389	12,195	5,194	2,160	1,576	584
University of Northern Iowa	11,095	9,806	1,289	782	701	81
Private Not-for-Profit, 4-year						
AIB College of Business	823	823	0	105	105	0
Allen College	523	367	156	11	8	3
Briar Cliff University	663	586	77	101	95	6
Buena Vista University	2,102	2,020	82	135	134	1
Central College	1,160	1,160	0	68	68	0
Clarke College	731	565	166	27	20	7
Coe College	761	758	3	34	34	0
Cornell College	190	190	0	10	10	0
Des Moines University	545	0	545	33	0	33
Divine Word College	0	0	0	0	0	0
Dordt College	509	498	11	2	2	0
Drake University	2,472	1,114	1,358	207	113	94
Emmaus Bible College	85	85	0	5	5	0
Faith Baptist Bible College	160	149	11	7	7	0
Graceland University	608	454	154	42	40	2
Grand View College	1,945	1,908	37	257	252	5
Grinnell College	166	166	0	27	27	0
Iowa Wesleyan College	393	393	0	35	35	0
Loras College	606	571	35	27	25	2
Luther College	747	747	0	49	49	0
Maharishi University of Management	80	52	28	14	8	6
Mercy College of Health Sciences	813	813	0	83	83	0
Morningside College	1,762	813	949	82	67	15
Mount Mercy College	1,700	1,405	295	139	110	29
Northwestern College	649	649	0	29	29	0
Palmer College of Chiropractic	242	18	224	17	2	15
Simpson College	1,769	1,179	590	179	127	52
St Ambrose University	1,657	1,604	53	93	90	3
University of Dubuque	926	767	159	78	66	12
Upper Iowa University	2,351	2,058	293	156	114	42
Wartburg College	1,194	1,194	0	84	84	0
William Penn University	912	754	158	73	51	22
Community Colleges						
Des Moines Area Community College	23,272	23,272	0	4,068	4,068	0
Eastern Iowa Community College	7,511	7,511	0	1,463	1,463	0
Hawkeye Community College	872	872	0	0	0	0
Indian Hills Community College	5,873	5,873	0	818	818	0
Iowa Central Community College	4,567	4,567	0	328	328	0
Iowa Lakes Community College	5,680	5,680	0	728	728	0
Iowa Valley -- Ellsworth Community Co.	2,565	2,565	0	147	147	0
Iowa Valley -- Marshalltown Community Co.	5,390	5,390	0	501	501	0
Iowa Western Community College	15,401	15,401	0	1,475	1,475	0
Kirkwood Community College	1,917	1,917	0	10	10	0
North Iowa Area Community College	3,048	3,048	0	228	228	0
Northeast Iowa Community College	4,525	4,525	0	226	226	0
Northwest Iowa Community College	1,498	1,498	0	72	72	0
Southeastern Community College	2,615	2,615	0	308	308	0
Southwestern Community College	1,558	1,558	0	81	81	0
Western Iowa Tech Community College	5,641	5,641	0	942	942	0
Private for-profit, 4-year or above						
Ashford University	433	433	0	0	0	0
Hamilton Technical College	147	147	0	37	37	0
ITT Technical Institute - Cedar Rapids	107	107	0	8	8	0
ITT Technical Institute - Clive	208	208	0	27	27	0
Kaplan University - Cedar Falls	329	287	42	66	57	9
Kaplan University - Cedar Rapids	402	360	42	51	42	9
Kaplan University - Council Bluffs	438	413	25	48	45	3
Kaplan University - Davenport	150	139	11	6	5	1
Kaplan University - Des Moines	643	586	57	72	62	10
Kaplan University - Mason City	188	171	17	11	11	0
University of Phoenix-Des Moines	0	0	0	0	0	0
Waldorf College	260	260	0	19	19	0
Private Not-for-Profit, 2-year						
St Lukes College	143	143	0	16	16	0
Private For-Profit, 2-year						
Vatterott College	210	210	0	41	41	0
Total	172,242	158,310	13,932	18,807	17,600	1,207

Source: Iowa College Student Aid Commission Annual Student and Faculty Ethnic Diversity Report



Exhibit H
IOWA COLLEGE STUDENT AID COMMISSION
Student and Faculty Ethnic Diversity
State Financial Aid to Minority Students at Iowa Colleges and Universities - Awards in Four Major Programs* in the 2011-2012 Academic Year

College Name	Iowa Tuition Grant (ITG) Awards - Total	Iowa Tuition Grant (ITG) Awards to Minority Students	Iowa Grants (IG) - Total	Iowa Grants (IG) to Minority Students	Vocational - Technical Tuition Grants (IVTTG) - Total	Vocational - Technical Tuition Grants (IVTTG) to Minority Students	All Iowa Opportunity Scholarships Total	All Iowa Opportunity Scholarships to Minority Students	State Aid Awards - Total for these Four Programs	State Aid Awards in these Four Programs to Minority Students
Regent Universities										
Iowa State University	0	0	135	25	0	0	96	24	231	49
University of Iowa	0	0	77	18	0	0	68	27	145	45
University of Northern Iowa	0	0	109	4	0	0	46	9	155	13
Private Not-for-Profit, 4-year										
AB College of Business	558	73	23	7	0	0	2	1	583	81
Allen College	245	6	10	1	0	0	0	0	255	7
Briar Cliff University	414	54	7	1	5	0	8	4	434	59
Buena Vista University	1,733	130	29	5	0	0	2	0	1,764	135
Central College	722	45	9	4	0	0	5	0	736	49
Clarke College	410	16	8	0	0	0	0	0	418	16
Coe College	416	27	8	3	0	0	0	0	424	30
Cornell College	122	8	1	0	0	0	1	0	124	8
Des Moines University-Osteopathic Medical Center	0	0	0	0	0	0	0	0	0	0
Divine Word College	0	0	0	0	0	0	0	0	0	0
Dordt College	322	1	3	0	0	0	1	0	326	1
Drake University	514	83	7	2	0	0	1	0	522	85
Emmaus Bible College	61	3	3	0	0	0	0	0	64	3
Faith Baptist Bible College and Theological Seminary	133	8	4	0	0	0	0	0	137	8
Graceland University-Lamoni	187	20	5	1	0	0	7	0	199	21
Grand View University	1,256	188	19	3	0	0	5	0	1,280	191
Grinnell College	77	14	1	0	0	0	0	0	78	14
Iowa Wesleyan College	294	19	3	0	0	0	0	0	297	19
Loras College	322	14	6	1	17	2	0	0	345	17
Luther College	357	22	8	2	0	0	1	0	366	24
Maharishi University of Management	43	8	1	0	2	0	0	0	46	8
Mercy College of Health Sciences	497	58	17	0	0	0	0	0	514	58
Morningside College	564	38	11	0	0	0	3	1	578	39
Mount Mercy College	856	46	19	2	0	0	2	1	877	49
Northwestern College	405	15	8	0	0	0	1	0	414	15
Palmer College of Chiropractic	0	0	0	0	0	0	0	0	0	0
Saint Ambrose University	570	68	8	2	0	0	0	0	578	70
Simpson College	871	65	23	3	0	0	3	0	897	68
University of Dubuque	547	63	10	0	0	0	0	0	557	63
Upper Iowa University	1,410	109	24	0	0	0	0	0	1,434	109
Warburg College	631	45	12	1	1	1	7	2	651	49
William Penn University	831	120	25	9	0	0	0	0	856	129
Community Colleges										
Des Moines Area Community College	0	0	87	22	657	107	26	4	770	133
Eastern Iowa Community College District	0	0	40	7	167	19	2	0	209	26
Ellsworth Community College	0	0	9	4	27	0	10	2	46	6
Hawkeye Community College	0	0	24	1	273	25	17	0	314	26
Indian Hills Community College	0	0	15	0	229	7	15	0	259	7
Iowa Central Community College	0	0	16	2	154	9	9	2	179	13
Iowa Lakes Community College	0	0	17	2	135	2	4	0	156	4
Iowa Western Community College	0	0	23	2	78	0	7	0	108	2
Kirkwood Community College	0	0	79	11	554	38	24	0	657	49
Marshalltown Community College	0	0	7	2	41	4	6	1	54	7
North Iowa Area Community College	0	0	19	4	114	7	5	0	138	11
Northeast Iowa Community College-Calmar	0	0	25	0	164	5	3	0	192	5
Northwest Iowa Community College	0	0	2	0	95	5	3	0	100	5
Southeastern Community College	0	0	31	3	101	10	2	0	134	13
Southwestern Community College	0	0	10	0	62	3	14	2	86	5
Western Iowa Tech Community College	0	0	15	4	196	23	23	11	234	38
Private for-profit, 4-year or above										
Ashford University	208	23	2	0	0	0	0	0	210	23
Ashford University-online	664	128	0	0	0	0	0	0	664	128
Hamilton Technical College	0	0	0	0	0	0	0	0	0	0
ITT Technical Institute - Cedar Rapids	0	0	0	0	0	0	0	0	0	0
ITT Technical Institute - Clive	0	0	0	0	0	0	0	0	0	0
Kaplan University	320	53	28	6	0	0	0	0	348	59
Kaplan University-online	252	7	0	0	0	0	0	0	252	7
Kaplan University-Cedar Falls Campus	345	57	18	0	1	0	1	0	365	57
Kaplan University-Cedar Rapids Campus	438	55	41	6	0	0	0	0	479	61
Kaplan University-Council Bluffs Campus	184	5	16	0	2	0	3	0	205	5
Kaplan University-Des Moines Campus	584	75	28	4	0	0	0	0	612	79
Kaplan University-Mason City Campus	202	10	14	0	0	0	0	0	216	10
University of Phoenix-Des Moines Campus	0	0	0	0	0	0	0	0	0	0
Waldorf College	137	9	4	2	0	0	1	0	142	11
Private not-for-profit, 2-year										
St Lukes College	65	7	2	0	0	0	0	0	67	7
Total	18,767	1,795	1,205	176	3,075	267	434	91	23,481	2,329

* Based on institutional reports to the Iowa College Student Aid Commission Annual Ethnic Diversity Report

Exhibit I			
IOWA COLLEGE STUDENT AID COMMISSION			
Student and Faculty Ethnic Diversity			
Fall 2012			
Faculty at Iowa Colleges and Universities			
College Name	Total Faculty	Faculty Excluding Non-Resident Alien and Race/Ethnicity Unknown	Faculty from Minority Population Groups
Regent Universities			
Iowa State University	1,845	1,776	331
University of Iowa	2,855	2,402	405
University of Northern Iowa	731	697	72
Private Not-for-Profit, 4-year			
AIB College of Business	59	59	2
Allen College	0	0	0
Briar Cliff University	66	66	2
Buena Vista University	347	347	15
Central College	120	115	11
Clarke College	160	160	2
Coe College	168	167	9
Cornell College	0	0	0
Des Moines University	99	96	11
Divine Word College	28	21	4
Dordt College	82	81	1
Drake University	451	433	45
Emmaus Bible College	42	42	3
Faith Baptist Bible College	29	29	2
Graceland University	85	83	14
Grand View College	94	94	7
Grinnell College	211	187	35
Iowa Wesleyan College	49	49	6
Loras College	159	159	5
Luther College	261	251	14
Maharishi University of Management	134	127	21
Mercy College of Health Sciences	117	117	7
Morningside College	190	181	3
Mount Mercy College	87	87	8
Northwestern College	133	132	7
Palmer College of Chiropractic	89	89	10
Simpson College	213	209	18
St Ambrose University	220	157	9
University of Dubuque	90	90	8
Upper Iowa University	586	452	55
Wartburg College	181	176	9
William Penn University	113	106	106
Community Colleges			
Des Moines Area Community College	342	340	22
Eastern Iowa Community College	677	665	44
Hawkeye Community College	83	77	4
Indian Hills Community College	402	402	20
Iowa Central Community College	146	146	2
Iowa Lakes Community College	426	372	7
Iowa Valley -- Ellsworth Community Co.	195	154	1
Iowa Valley -- Marshalltown Community Co.	352	305	23
Iowa Western Community College	1,096	925	46
Kirkwood Community College	100	89	3
North Iowa Area Community College	222	222	2
Northeast Iowa Community College	331	255	7
Northwest Iowa Community College	141	139	1
Southeastern Community College	308	306	10
Southwestern Community College	116	116	4
Western Iowa Tech Community College	373	303	15
Private for-profit, 4-year or above			
Ashford University	76	36	3
Hamilton Technical College	13	13	2
ITT Technical Institute -- Cedar Rapids	32	31	7
ITT Technical Institute--Clive	59	59	8
Kaplan University - Cedar Falls	20	13	2
Kaplan University - Cedar Rapids	30	15	0
Kaplan University - Council Bluffs	29	19	0
Kaplan University - Davenport	13	11	1
Kaplan University - Des Moines	49	32	3
Kaplan University - Mason City	7	7	0
University of Phoenix-Des Moines		0	0
Waldorf College	41	41	1
Private not-for-profit, 2-year			
St Lukes College	35	35	0
Private for-profit, 2-year			
Vatterott College	26	25	1
Total	15,834	14,390	1,496

Source: Iowa College Student Aid Commission Annual Student and Faculty Ethnic Diversity Report