

# Early Childhood Iowa Annual Report



Early  
Childhood  
Iowa



2013



www.earlychildhoodiowa.org

Dear Iowans:

Early Childhood Iowa is pleased to share the 2013 annual report. There are many wonderful things happening to support Iowa's youngest children and their families. As this initiative grows and matures, this report shares information about the results from the cadre of services being supported with ECI funding.

Early Childhood Iowa (ECI) is founded on the premise that government and communities can work together so that 'every child, beginning at birth, will be healthy and successful.' Recognizing the importance of the first 2000 days of a young child's development (ages 0-5 years), the Early Childhood Iowa Board engages in efforts to unite agencies, organizations, and community partners to speak with a shared voice and meet a set of results on behalf of all young children and families.

In their role, the Board has updated its strategic plan. The plan focuses on building a stronger system of supports, achieving desired results for the efforts invested in, and advocating for those young voices. In that vein, the board continues to strive towards a set of results to achieve our vision.

There are currently 39 ECI Areas that cover the entire state, each area with its own leadership and locally-developed community plan. In those areas, the local board members and community partners come together to build a stronger community of services as described in their community plans. In this report, you will see a highlight of the results of their efforts through program performance measures.

Within this report, the Early Childhood Iowa State Board, ECI Stakeholders, area boards, programs, and services reflect constant change, adaptation and leadership to support partnerships that strengthen our early care, health, and education system. Their work keeps the greatest needs of our youngest Iowans at the forefront. Their voices can't be ignored if our state is to be strong in the education, economic and global sectors. Early Childhood Iowa is ready, able and positioned to help bridge those platforms and build a future generation of Iowans who will stay, work and prosper in this great state. Thanks to everyone who contributed to this worthy effort.

Respectfully Submitted,

Joanne Lane, Chairperson  
Early Childhood Iowa State Board



# Table of Contents

ECI Overview	3
Results Accountability	4
Result Pages:	
<i>Healthy Children</i>	5
<i>Children Ready to Succeed in School</i>	7
<i>Secure and Nurturing Early Learning Environments</i>	9
<i>Safe and Nurturing Families</i>	11
<i>Safe and Supportive Communities</i>	13
<i>Admin Report</i>	15
Technical Assistance	16
ECI Snapshot	17
Addendum to the Report	18





# ECI Overview

## Early Childhood Iowa Initiative

Early Childhood Iowa (ECI) is a collaborative and comprehensive partnership for the integration of an early care, health, and education system in Iowa to improve outcomes for children. ECI developed a Strategic Plan that serves as the single plan for Iowa's Early Childhood (EC) System. The Strategic Plan outlines the priorities and strategies for the EC system and predicts the work of state agencies and public/private partnerships. The current reality in Iowa is that programs, policies, and systems that serve young children are inadequate to meet the changing needs of children and families. The plan offers a framework to support the efforts of local and state level partners to coordinate, collaborate, and integrate efforts that will lead to healthy and successful children.

Early Childhood Iowa brings together system building projects to support the implementation of a comprehensive early childhood system. The plan is a living, breathing document that will be reviewed yearly to assess the emerging issues of the system. The plan belongs to all stakeholder groups and organizations who believe working together corroboratively to coordinate common goals and outcomes will lead to greater success than is possible when working in silos.

Early Childhood Iowa's vision is "Every child, beginning at birth, will be healthy and successful." This vision has been adopted by early childhood partners and serves as the vision of the early care, health, and education system.

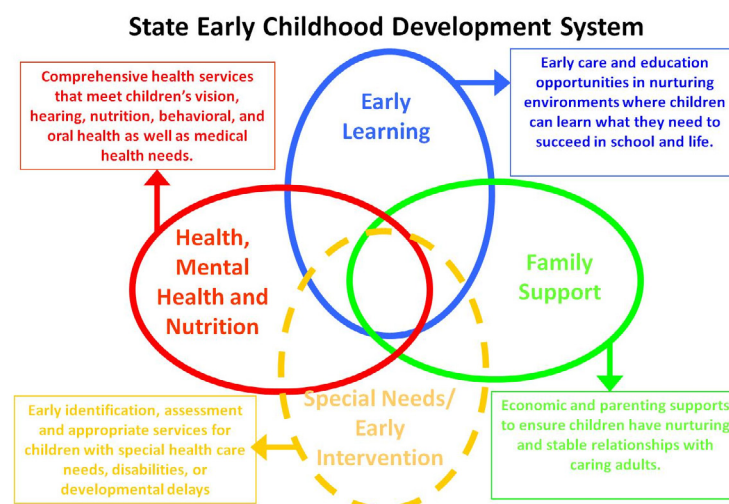
While Early Childhood Iowa is stakeholder driven, it is also grounded in national and state level evidence-based information which guides

system change. The plan embraces the four system ovals for system integration, described in the next section.

An early childhood system is made up of interrelated parts working together toward a common goal: to ensure the healthy growth and optimal development of young children in the context of their families.

## ECI System Framework

A system framework involves more than individual components successfully operating separately. These components must work together in a coordinated and effective way. Early Childhood Iowa considers programs, policies, strategies and planning efforts that integrate all systems in the lives of Iowa's young children and their families and how those systems work together. Some issues overlap all the system-building components and linkages such as the role of Early Childhood Iowa and our partners to coordinate, educate and communicate system building efforts and raise awareness of the importance of a strong early childhood system.



# Results Accountability

Accountability for results continues to be the hallmark of Early Childhood Iowa (ECI). The following pages showcase the data collected by Early Childhood Iowa.

When looking at this information, it is important to realize that the Early Childhood Iowa initiative is not a program in and of itself. Instead, ECI funds are legislated to support existing local programs and services by filling gaps – most often by allowing additional families/children to be served, or by increasing the quality of the services provided. As the coordinating body within their ECI area, it is the ECI Area Board's responsibility to pull the community together to collectively determine the strengths, gaps and needs of the families and young children served. Ultimately, the board makes funding decisions that will impact the priorities determined through the strategic planning process.

Presentation of the Report Data:

The data within this report is organized by Result area and showcases information at the state level (indicators), as well as local program data.

The presentation of the data utilizes the following sequence:

## Results

At its inception in 1998, legislation established five results to be achieved, both statewide and at the local level. ECI (then Community Empowerment) utilized the Accountable Government Act as the standard for measuring progress toward accountability. A result is defined as "the effect desired for all Iowans".

The legislated results are:

- Healthy Children
- Children Ready to Succeed in School
- Safe and Supportive Communities
- Secure and Nurturing Families
- Secure and Nurturing Early Learning Environments

## Indicators

The Early Childhood Iowa State Board collects and reports statewide indicator data to quantify and track progress toward the statewide results. An indicator is "a measure that directly or indirectly quantifies the achievement of a result. It measures the whole population, prenatal through 5 years of age. More than one resource, program or service is necessary to improve an indicator and it often requires collaboration to reach the goal."

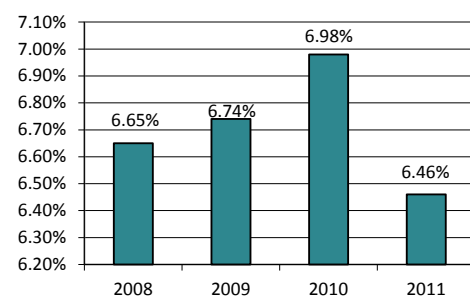
## Program Performance Measures

A performance measure "measures the success of a service, product, or activity for the population served". In FY'11, the ECI State Board adopted consistent program measures which are required to be reported by all programs funded with both Early Childhood and School Ready dollars. This information is submitted in the local annual reports submitted to the ECI Office. The data is then compiled and shared from a state perspective in the ECI state annual report.

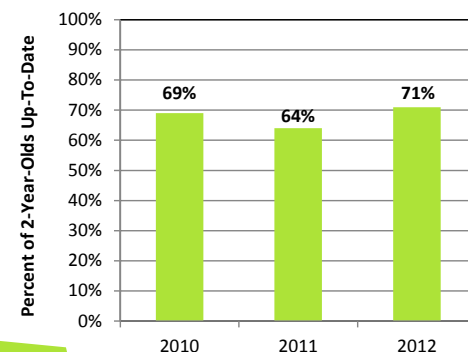
## Legislated Result

## Healthy Children

Low Birth Weight



Immunized Children



### LOW BIRTH WEIGHT

Percent of babies born weighing less than 2,500 grams

Source: Iowa Department of Public Health- Vital Statistics

### IMMUNIZED CHILDREN

Percent of 2-year-olds with up-to-date immunizations

Source: Iowa Department of Public Health- Bureau of Immunization

State Indicators

#### Other Factors Impacting this Result:

I-Smile™; Project LAUNCH; Help Me Grow; ACES; *hawk-i* Outreach; 1st Five Healthy Mental Development; EPSDT; Title V Child Health; Period of Purple Crying; Early Hearing Detection and Intervention; Newborn screening; Immunizations; Lead Screening

#### Additional Partners that Assist in Moving Indicators in a Positive Direction:

Local Public Health; WIC Clinics; IDPH; Child Health Specialty Clinics; Local Title V Child Health Agencies; DHS

## Local Strategies and Performance Measures

### hawk-i Outreach

1 out of the 45 ECI areas supported outreach for families to access health insurance

\$6,328 total funds reported.  
(ECI: \$6,328; Non-ECI: \$0)

20 applications were processed

100% of children applying for *hawk-i* and Medicaid enrolled in the programs

### Lead Screens

4 out of the 45 ECI areas supported screening young children for high levels of lead

\$72,458 total funds reported.  
(ECI: \$26,760; Non-ECI: \$45,698)

251 Children were screened

\$288 average cost per child, based on total funds reported

100% of children identified with elevated lead levels received follow up service

8 out of the 45 ECI areas supported general health services

\$495,147 total funds reported.  
(ECI: \$225,024; Non-ECI: \$270,123)

11,639 children were served

\$43 average cost per child, based on funds reported

51% of children screened that needed follow up/treatment received those services

### General Health

19 out of the 45 ECI areas supported dental screens

\$662,809 total funds reported.  
(ECI: \$315,529; Non-ECI: \$347,280)

13,090 children were served

\$51 average cost per child, based on total funds reported

54% screened that needed dental treatment went to a dentist

88% of the children screened were cavity free

### Dental Services

### Prenatal/Postnatal Services

5 out of the 45 ECI areas supported these services

\$78,255 total funds reported.  
(ECI: \$49,101; Non-ECI: \$29,154)

341 children were served (including prenatal children)

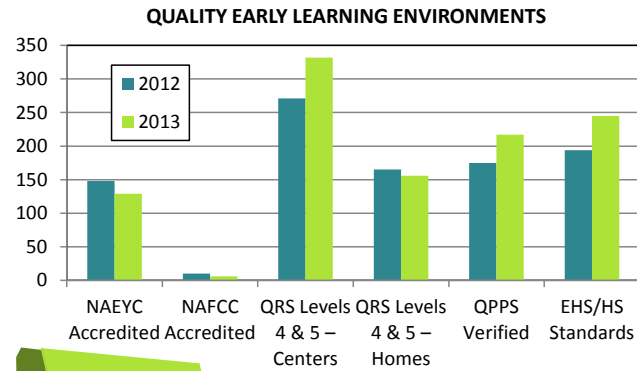
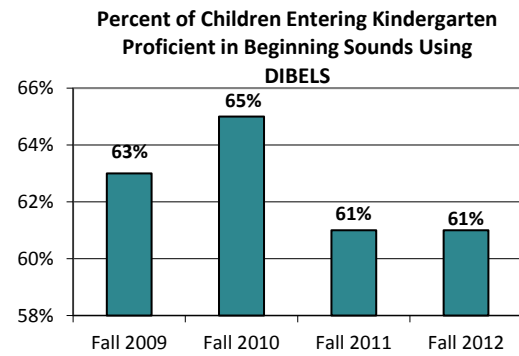
\$229 average cost per child, based on total funds reported

46% screened that needed follow up/treatment, received the services



## Legislated Result

# Children Ready to Succeed in School



### PRE-LITERACY SKILLS

Percent of children entering kindergarten who are proficient in Beginning Sounds as measured by DIBELS

Source: Project Easier, Iowa

### QUALITY EARLY LEARNING ENVIRONMENTS

Number of quality early learning environments that are NAEYC or NAFCC accredited, meet Head Start Program performance standards, verified QPPS sites, and/or have achieved a QRS level of 4-5

Source: Early Childhood Iowa

State Indicators

#### Other Factors Impacting this Result:

Every Child Reads; Statewide Voluntary Preschool Program; Shared Visions; Raising Readers Learning Centers; Reach Out and Read; Childcare Alliance Response Team (CART); childcare/preschool wraparound programs; Parents As Teachers; ECI preschool scholarships; Positive Behavior & Intervention Supports; Early Learning Standards

#### Additional Partners that Assist in Moving Indicators in a Positive Direction:

Iowa AEYC; Head Start; DE; United Way; IPTV; Academy of Pediatricians; community-based early education providers; DHS Wraparound funds; Early ACCESS; AEA; ISU

# Local Strategies and Performance Measures

## Literacy Programs

3 out of the 45 ECI areas supported stand alone literacy programs

\$56,622 total funds reported.  
(ECI: \$53,922; Non-ECI: \$2,700)

1,738 children were served

\$33 average cost per child, based on funds reported

97% of parents report an increase in reading to their child each day

97% of parents report an increase of talking with their child about new words in stories

## Tuition Assistance

44 out of the 45 ECI areas supported this service

\$4,326,724 total funds reported.  
(ECI: \$4,043,443; Non-ECI: \$283,281)

3765 Children received tuition assistance/scholarships

\$1,149 average cost per child, based on total funds reported

90% of children demonstrated age appropriate skills

## Early Care and Education Supportive Services

22 out of the 45 ECI areas supported these services

\$6,182,637 total funds reported.  
(ECI: \$1,518,289; Non-ECI: \$4,664,348)

4,179 children were served

\$1,479 average cost per child, based on total funds reported

75% of children served demonstrated age appropriate skills

## Scholarship Coordination

18 out of the 45 ECI areas supported these services

\$211,851 total funds reported.  
(ECI: \$211,604; Non-ECI: \$247)

78% of children applying for scholarships received it

Reasons a child did not receive a scholarship: over income; inadequate funding available; eligible for another program; age ineligible; no longer need; moved out of the specific ECI area

## Transportation

23 out of the 45 ECI areas supported transportation services

\$385,314 total funds reported.  
(ECI: \$288,328; Non-ECI: \$96,986)

1,064 children were provided transportation services

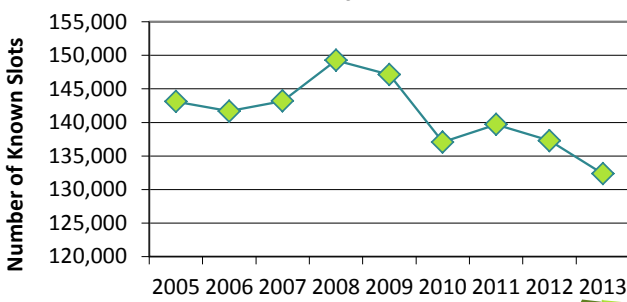
\$362 average cost per child, based on total funds reported

87% of the days preschool was offered that children were able to attend because of this service

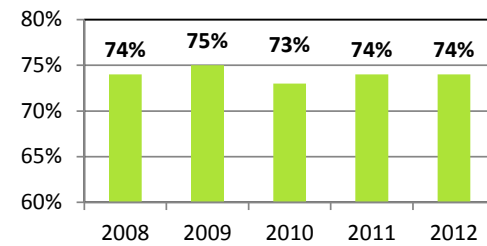
## Legislated Result

# Secure & Nurturing Early Learning Environments

Availability of Child Care



Percent of Households with Children under Age 6 and All Parents in the Workforce



### AVAILABILITY OF CHILD CARE

Number of licensed and registered child care slots

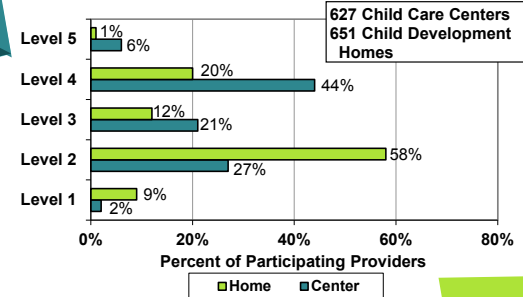
Source: Iowa Department of Human Services

### WORKING PARENTS

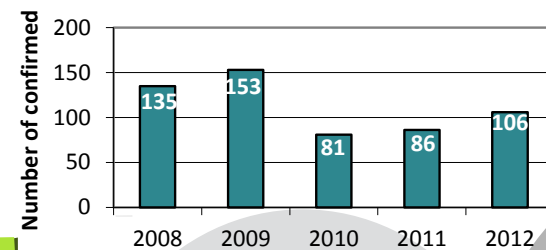
Percent of households with children under age 6 and all parents in the workforce

Source: American Community Survey

Child Care Quality Ratings



Child Abuse in Center- and Home-based Child Care



### QUALITY CHILD CARE RATINGS

Percent of participating child care providers at each level of the voluntary quality rating system

Source: Iowa Department of Human Services

### CHILD ABUSE IN CHILD CARE SETTING

Number of confirmed or founded child abuse by home or center-based child care provider

Source: Iowa Department of Human Services

# Local Strategies and Performance Measures

## Child Care Consultant

21 out of the 45 ECI areas supported a Child Care Consultant

\$1,623,079 total funds reported. (ECI: \$1,499,700; Non-ECI: \$123,379)

95% of participants were able to incorporate developmentally appropriate activities in their early learning environments

## Child Care Nurse Consultants

32 out of the 45 ECI areas supported this service to assist early learning environments (preschools, child care centers, home child care)

\$1,266,725 total funds reported. (ECI: \$1,058,745; Non-ECI: \$207,980)

75% of children with special needs had a health care plan

87% of participants improved health and safety in their early learning environments

## Quality Improvement

14 out of the 45 ECI areas supported activities to improve quality through support of the Quality Rating System (QRS)

\$427,005 total funds reported. (ECI: \$412,674; Non-ECI: \$14,331)

39% of early care and education programs that were supported rated at least a level 3 in Iowa's QRS

30 out of the 45 ECI areas supported services to improve the quality of Early Learning Programs

\$1,456,131 total funds reported. (ECI: \$1,080,079; Non-ECI: \$371,052)

71% of programs participating were able to improve at the highest level of the identified quality initiative in which they participated

## Improved Early Learning

3 out of the 45 ECI areas supported crisis care services

\$215,102 total funds reported. (ECI: \$196,800; Non-ECI: \$18,302)

343 children were served

\$627 average cost per child, based on total funds reported

85% of parents reported they were connected to new support services

## Crisis Care

Other Factors Impacting this Result:  
Healthy Child Care Iowa; I-Consult

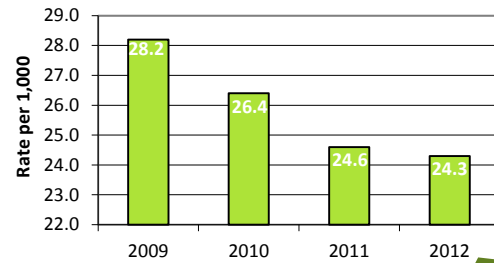
Additional Partners that Assist in Moving Indicators in a Positive Direction:  
CCR&R; T.E.A.C.H. Iowa; Head Start; IDPH; ISU Extension



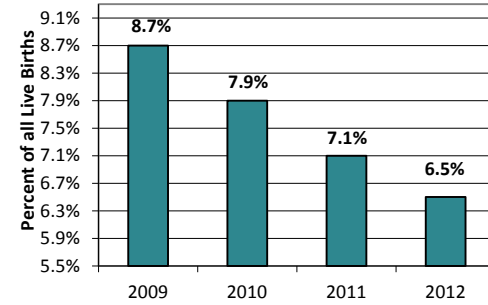
## Legislated Result

# Safe and Nurturing Families

Incidence of Child Abuse  
(Children 0 -5 years old)



Teen Births



## INCIDENCE OF CHILD ABUSE

Incidence of confirmed child abuse for children 5 years old and under

Source: Iowa Department of Human Services

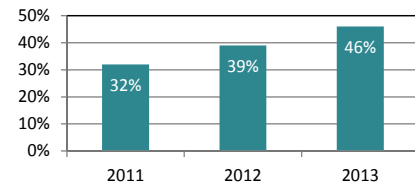
## TEEN BIRTHS

Percent of all births to mothers under age 20

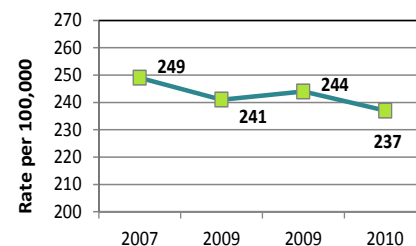
Source: Iowa Department of Public Health

State Indicators

Percent of Accredited Family Support Programs in Iowa



Domestic Violence Rate



Domestic Abuse Incident Characteristics



## ACCREDITED FAMILY SUPPORT PROGRAMS IN IOWA

Programs demonstrating adherence to quality standards as determined by an external review

Source: Iowa Department of Public Health

State Indicators

## DOMESTIC VIOLENCE RATE

Domestic abuse rate and domestic abuse rate where children were present

Source: Iowa Department of Public Safety

# Local Strategies and Performance Measures

## Emotional/Behavioral Support

7 out of the 45 ECI areas supported services

340,834 total funds reported.  
(ECI: \$321,454; Non-ECI: \$19,380)

96% of the programs participating in these supportive services reported an increase in their confidence and competence when dealing with children demonstrating emotional/behavioral challenges

## Family Support

45 out of the 45 ECI areas supported family support services

\$17,388,759 total funds reported.  
(ECI: \$13,124,304; Non-ECI: \$4,264,455)

58% of the families have a head of household with a high school diploma or less education

72% of children in the family support programs were screened for developmental delays

85% of the family support programs are participating in state or national credentialing programs

\*For the full report on Family Support funds go to:  
[http://www.earlychildhoodiowa.org/EC\\_resources/annual\\_reports/index.html](http://www.earlychildhoodiowa.org/EC_resources/annual_reports/index.html)

4 out of the 45 ECI areas supported resource libraries

\$105,869 total funds reported.  
(ECI: \$20,742; Non-ECI: \$85,127)

100% of participants increased their knowledge of early childhood growth and development

Resource Libraries

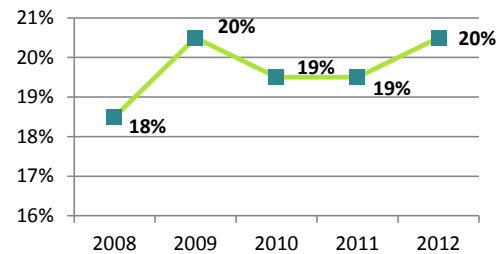
Additional Partners that Assist in Moving Indicators in a Positive Direction:  
LSI; Prevent Child Abuse Iowa; Head Start; DHR; community-based service providers (ICCSA, Neighborhood Centers of Johnson County, United Action for Youth, Children's Center for Therapy); FaDDS

Other Factors Impacting this Result:  
Help Me Grow; MIECHV; Shared Visions; FaDDS; Even Start; Parents As Teachers; Healthy Families America

## Legislated Result

# Safe and Supportive Communities

Percent of Children under age 6 in Poverty

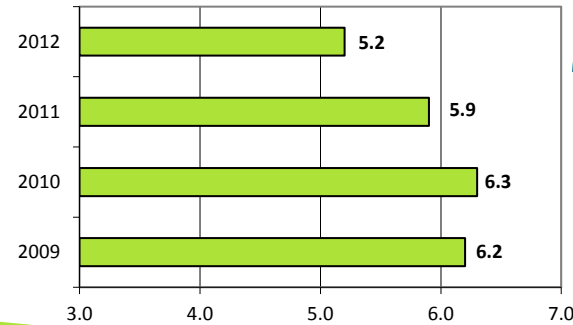


### CHILDREN IN POVERTY

Percent of children under six years of age living in poverty

Source: Kids Count Data Center

Unemployment Rate

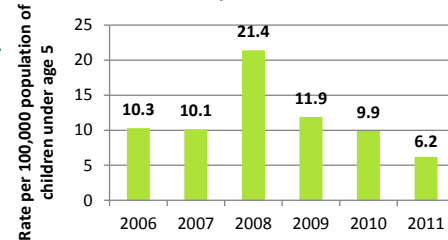


### UNEMPLOYMENT RATE

Percent of households with children under age 6 and all parents in the workforce

Source: American Community Survey

Child Deaths due to Unintentional Injuries

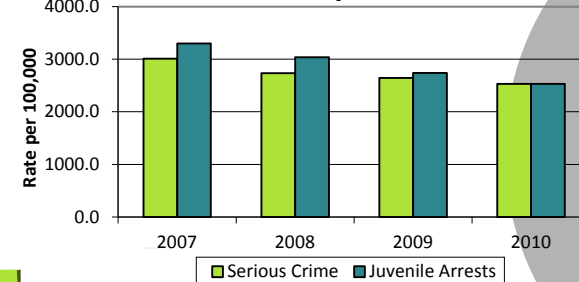


### UNINTENDED INJURIES

The number of child deaths due to unintentional injuries/estimated midyear Iowa population per 100,000 population of children under age 5 years

Source: Iowa Department of Public Health-Vital Statistics

Serious Crime/Juvenile Arrests



### JUVENILE ARRESTS

The rate of serious crime per 100,000 population

Total arrests per 100,000 estimated juvenile population (children 18 years old and under)

Source: Iowa Department of Public Safety

## Local Strategies and Performance Measures

### Coordinated Intake

4 out of the 45 ECI areas supported a Coordinated Intake project

\$41,277 total funds reported.  
(ECI: \$39,493; Non-ECI: \$1,784)

75% of families that received referrals enrolled in the program or service

6 out of the 45 ECI areas supported public awareness activities/child health fairs in their areas

\$50,622 total funds reported.  
(ECI: \$50,622; Non-ECI: \$0)

83% of parents reported greater awareness of ECI and early childhood services available to their children

### Public Awareness Activities

### Car Seat Safety Checks

2 out of the 45 ECI areas supported car seat safety checks

\$1,989 total funds reported.  
(ECI: \$1,989; Non-ECI: \$0)

92 car seats were checked for proper installation  
\$22 average cost per child, based on the total funds reported

67% of the car seats were properly installed prior to the safety checks, as reported by the car seat safety technician

35 out of the 45 ECI areas supported a professional development activities

\$1,935,017 total funds reported.  
(ECI: \$974,379; Non-ECI: \$960,638)

88% of the professional development opportunities resulted in ratings, certifications, credentials, renewals

### Professional Development

Other Factors Impacting this Result:  
Prevent Child Abuse Iowa; DHS

Additional Partners that Assist in Moving Indicators in a Positive Direction:  
Community Partnerships for Protecting Children, IDPH Community Transformation Grants



# Local Board Supports

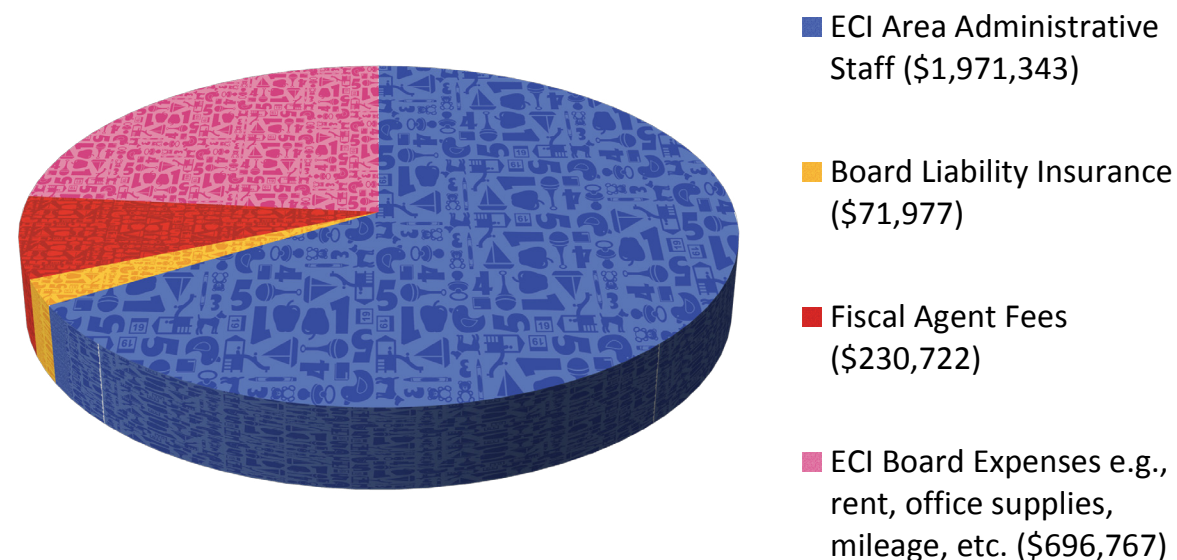
The Iowa legislature annually appropriates funds to citizen-led Early Childhood Iowa Area (ECIA) boards. The responsibility to allocate those funds based on the gaps and needs identified within their local community plans lies solely with each board.

In order to remain a designated ECI area and continue to receive funds, the ECIA board must demonstrate to the ECI State Board, its capacity to efficiently and effectively administer the responsibilities and authority of the area to be served. To that end, ECIA boards have realized the value in financially supporting staff to assist in meeting legislated responsibilities, strategically addressing local needs and implementing quality early care, health and education efforts in the community.

## ECIA Director (Area Board Administrative Support) and ECIA Board

- \$ 28,245,794 total ECI funds legislatively appropriated to the local boards to support programming in the community for young children (ages 0-5) and their families
- \$7,027,162 total Non-ECI Funds reported supporting local programs and services
- 11% of the total ECI appropriations were used for ECI Administrative Functions locally
- 395 ECIA board meetings held
- 925 community collaboration meetings convened
- 831 contracts with local program providers
- 98% compliance with required information submissions to the ECI Office
- 95% of the local contracts meet all areas of service contract compliance
- 98% of ECIA board meetings in FY13 met quorum and adhered to Chapters 21 & 22 of Iowa Code

## ECI Administrative Functions



# Technical Assistance

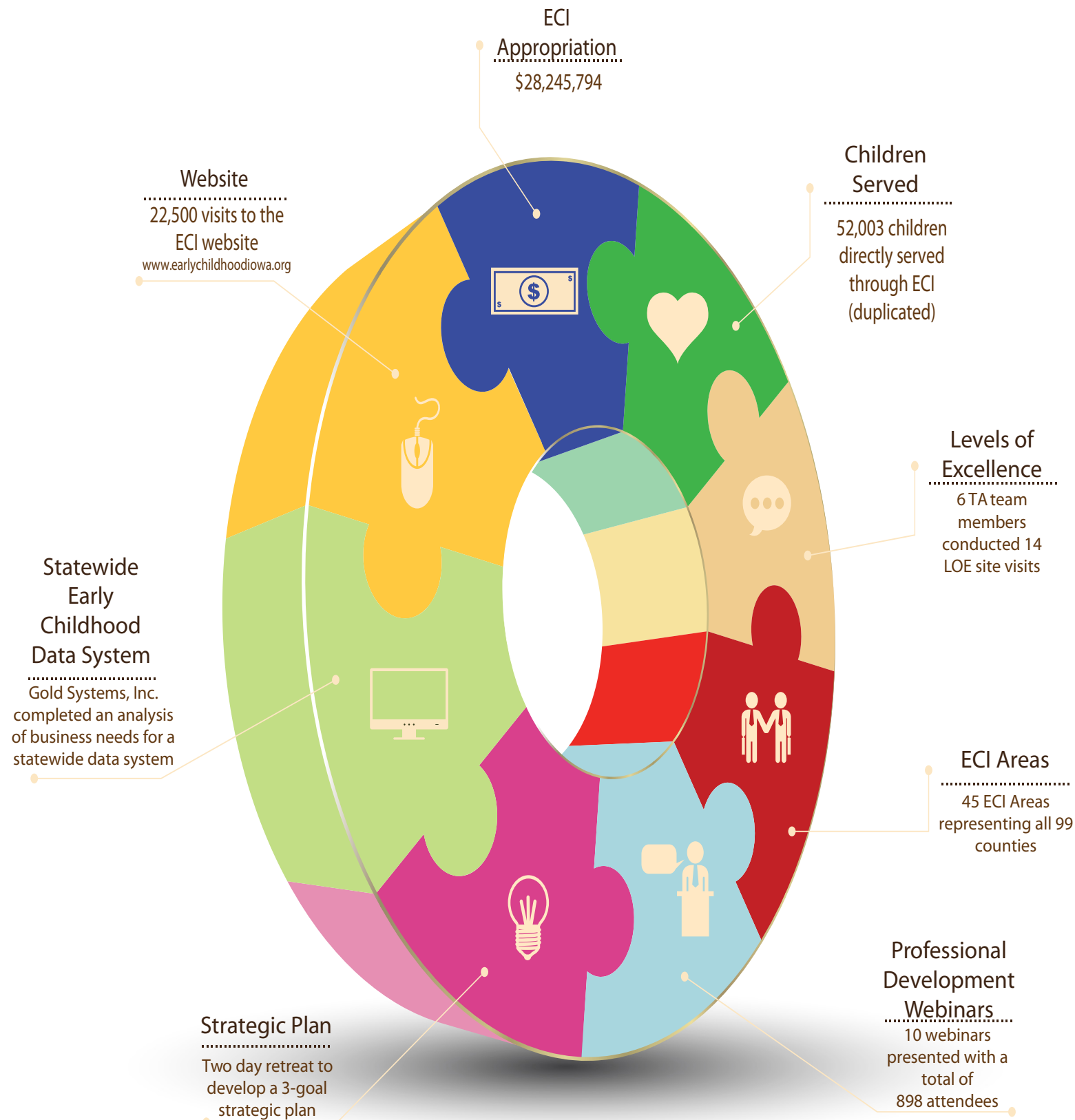
As part of the infrastructure for Early Childhood Iowa, legislation directs the six state agencies represented on the state board to designate staff as they are able, to work as a technical assistance (TA) team, along with the Early Childhood Iowa Office in the Department of Management. The role of the TA team is to provide coordination and other support to the state's comprehensive early care, education, health, and human services system.

In 2013, the team consisted of representation from the Departments of Education, Human Services, Management, and Public Health. The other departments – Human Rights and Workforce Development – were not able to target staff to this work; although each of the six departments remain dedicated to ECI at the state board level. The TA team assisted the state board in providing the following:

- The roll out of the statewide family support data system. This will provide an online method to gather and report data from family support and parent education programs and will increase accuracy and inconsistency.
- The second round of reviews for the Levels of Excellence rating system, the designation process for ECI area boards.
- Targeted technical assistance to the remaining ECI area boards that are merging in order to meet the legislated requirements for ECI area boundaries.
- Assistance in the consistent interpretation of the common program performance measures for all ECI funds.
- Leadership roles within the ECI component workgroups and the Stakeholders Alliance to move the system forward.
- Participation in the strategic plan development for the Early Childhood Iowa system
- A final report regarding the design of a unified data system that supports state early learning and development goals for children and families, in collaboration with the department of education, the objectives of the Early Childhood Advisory Council grant and other early childhood partners.
- Meetings with ECI area boards to address specific questions regarding legislation and best practice for operations.

In addition, on-going technical assistance continued by way of telephone, e-mail and on-site visits, as well as the on-line ECI “tool-kit”, quarterly ECI area director meetings, and the area annual report review process.





The following supportive documents can be accessed by visiting the FY13 Annual Report link on the official ECI website, [http://www.earlychildhoodiowa.org/EC\\_resources/annual\\_reports/index.html](http://www.earlychildhoodiowa.org/EC_resources/annual_reports/index.html):

FY13 Annual Report Executive Summary

Early Childhood Iowa Indicator Trend Data

ECI Indicator Data by ECI Area

ECI Alliance and Early Childhood Advisory Council Grant Update

2013 Early Childhood Legislative Session Update

ECI Professional Development Update

State Child Care Advisory Committee Update

ECI Family Support 2013 Data Summary

ECI Area Overview

ECI State Board Membership

ECI Timeline through 2013

ECI History of the Early Childhood Fund

ECI History of the School Ready Fund

ECI Funding Summary

ECI State System Overview





Early  
Childhood  
Iowa



2,000  
DAYS



[www.earlychildhoodiowa.org](http://www.earlychildhoodiowa.org)