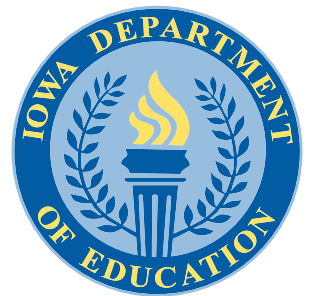


February 6, 2015



Legislative Report
IOWA EARLY INTERVENTION BLOCK GRANT
PROGRAM (CLASS SIZE) 2014-2015

STATE BOARD OF EDUCATION

State of Iowa
Department of Education
Grimes State Office Building
400 E. 14th Street
Des Moines, IA 50319-0146

State Board of Education

Charles C. Edwards, Jr., President, Des Moines
Michael L. Knedler, Vice President, Council Bluffs
Brooke Axiotis, Des Moines
Michael Bearden, Gladbrook
Diane Crookham-Johnson, Oskaloosa
Angela English, Dyersville
Rosie Hussey, Clear Lake
Mike May, Spirit Lake
Mary Ellen Miller, Wayne County
Hannah Rens, Student Member, Sioux City

Administration

Brad A. Buck, Director and Executive Officer
of the State Board of Education

Division of Learning and Results

W. David Tilly, Deputy Director

Bureau of Information and Analysis Services

Jay Pennington, Chief
Connie Brooks, Consultant

Division of School Finance & Support Services

Jeff Berger, Deputy Director

Bureau of Finance, Facilities, Operation, and Transportation Services

Denise Ragias, Consultant

It is the policy of the Iowa Department of Education not to discriminate on the basis of race, creed, color, sexual orientation, gender identity, national origin, sex, disability, religion, age, political party affiliation, or actual or potential parental, family or marital status in its programs, activities, or employment practices as required by the Iowa Code sections 216.9 and 256.10(2), Titles VI and VII of the Civil Rights Act of 1964 (42 U.S.C. § 2000d and 2000e), the Equal Pay Act of 1973 (29 U.S.C. § 206, et seq.), Title IX (Educational Amendments, 20 U.S.C. §§ 1681 – 1688), Section 504 (Rehabilitation Act of 1973, 29 U.S.C. § 794), and the Americans with Disabilities Act (42 U.S.C. § 12101, et seq.). If you have questions or complaints related to compliance with this policy by the Iowa Department of Education, please contact the legal counsel for the Iowa Department of Education, Grimes State Office Building, 400 E. 14th Street, Des Moines, IA 50319-0146, telephone number: 515-281-5295, or the Director of the Office for Civil Rights, U.S. Department of Education, Citigroup Center, 500 W. Madison Street, Suite 1475, Chicago, IL 60661-4544, telephone number: 312-730-1560, FAX number: 312-730-1576, TDD number: 877-521-2172, email: OCR.Chicago@ed.gov.

TABLE OF CONTENTS

Introduction	1
Table 1. State Class Size Reduction Allocations for Iowa Public Schools.....	1
Methodology	2
Findings	2
Table 2. Iowa Public School Districts Average Class Sizes for Grades K-3.....	3
Figure 1. Iowa Public School Districts Average Class Sizes for Grades K-3.....	3
Table 3. Average Class Size Comparison for Iowa Public School Districts by Enrollment Category - Kindergarten.....	4
Table 4. Average Class Size Comparison for Iowa Public School Districts by Enrollment Category - First Grade	4
Table 5. Average Class Size Comparison for Iowa Public School Districts by Enrollment Category - Second Grade	5
Table 6. Average Class Size Comparison for Iowa Public School Districts by Enrollment Category Third Grade	5
Table 7. Average Class Size Comparison for Iowa Public School Districts by Enrollment Category Kindergarten to Third Grade	6
Table 8. Percent of Iowa Public School Districts K-3 Classrooms with Greater Than 17, 21, 25, and 30 Students.....	6
Figure 2. Number of Iowa Public School Districts K-3 Classrooms	8
Figure 3. Number of Iowa Public School Districts K-3 Students.....	8
Figure 4. Number of Iowa Public School Districts K-3 Teachers	9
Table 9. Iowa Public School District BEDS Enrollment for Kindergarten through Third Grade	9
Table 10. Iowa Public School Districts Change in Average Class Size vs. BEDS Enrollment	10
Expenditures	10
Table 11. FY14 Iowa Early Intervention Block Grant Program FY14 Expenditures by Object as of 12/5/2014.....	10
Figure 5. FY14 Iowa Early Intervention Block Grant Program FY14 Expenditures by Object as of 12/5/2014.....	11
Table 12. Object Category Expenditures as a Percent of Total Early Intervention Expenditures by Enrollment Category FY14	11

Appendices	12
Appendix A. Iowa Public School District Class Size Frequency Distributions 2014-2015 ...	13
Appendix B. Iowa Public School District Class Size Summary Statistics for Kindergarten Through Third Grade 2014-2015	18
Appendix C. Iowa Public School District Average Class Size (AVGCS) for Kindergarten Through Third Grade	19
Appendix D. Iowa Public School Districts' FY14 Early Intervention Block Grant Program Expenditures By Object as of 12/05/14	71
Appendix E. Iowa Public School Districts' Early Intervention Block Grant Program Allocations	84
Appendix F. Iowa Public School Districts' Percent Proficient	100
DISTRICTS IMPROVING PROFICIENCY PERCENTAGES	100
Iowa Public School Districts	101
Percent Proficient in Reading	101

INTRODUCTION

Class size reduction for the early elementary grades remained a funded state program in 2014-2015, continuing efforts initiated by the Iowa Early Intervention Block Grant Program (House File 743) in 1999. Iowa's class size reduction program established in Iowa Code Chapter 256D goals are 17 students per one teacher for basic skills instruction, provide direction and resources to help districts achieve a high level of student success in basic skills, especially reading skills; and increase communication and accountability regarding student performance.

Table 1 provides a breakdown of funding from FY2000 through FY2015.

TABLE 1. STATE CLASS SIZE REDUCTION ALLOCATIONS FOR IOWA PUBLIC SCHOOLS

Fiscal Year	State Allocation
FY 2000	\$10 million
FY 2001	\$20 million
FY 2002	\$30 million
FY 2003	\$30 million
FY 2004	\$29.325 million*
FY 2005	\$29.250 million
FY 2006	\$29.250 million
FY 2007	\$29.250 million
FY 2008	\$29.250 million
FY 2009	\$29.250 million
FY 2010	\$29.250 million**
FY 2011	\$29.8 million
FY 2012	\$29.9 million
FY 2013	\$30.3 million
FY 2014	\$31.1million
FY 2015	\$32.4 Million

Source: Iowa Department of Education

Notes: *The FY 2004 appropriation was reduced as a result of an across-the-board cut after the initial appropriation and then received a partial restoration of funds.

** Beginning in FY2010, funding of the Iowa Early Intervention Block Grant Program was rolled into the State Aid formula. This allows the funding of this program to grow along with the overall funding of school districts across Iowa.

METHODOLOGY

Public school districts report the number of kindergarten, first, second, and third grade classroom sections, students, teachers, and aides by building on the Fall Basic Educational Data Survey (BEDS) collection. Special education teachers and aides are not included in the reporting. Physical education, art, music, and other “specialty” and “pull-out” program (such as Title I reading and math) teachers are also excluded from the teacher count.

Some districts utilize multi-age classrooms for their K-3 students. For example, a classroom may combine first and second grade students in one room. Districts may report these combination classrooms as grade level “Other” on the Class Size submission. These classrooms are not included in the Class Size Survey file that supports the majority of this report.

The Department of Education calculated average class size for kindergarten through third grade at the district and state level. Average class size equals the number of students divided by the number of classrooms for each grade level.

$$\text{Average Class Size} = \text{Number of Students} / \text{Number of Classrooms}$$

Since average class size uses the number of classrooms as the denominator, adding additional teachers to a classroom does not lower the average class size for that grade level (refer to Appendix B for the full-time equivalent [FTE] of classroom teachers). The use of classroom aides also does not reduce average class size at the district or state level.

FINDINGS

This report provides class size data from 1998-1999 to 2014-2015 for kindergarten through third grade. Average class size decreased slightly in 2014-2015 for all grades except second when compared to 2012-2013 (see Table 2 and Figure 1). Kindergarten through second grade average was at the lowest level since 2010-2011. This is the first. Third grade continued to show the highest average class size per classroom of the

grades examined, at 21.4 students per classroom for 2014-2015, and remained above 20 students in each year studied.

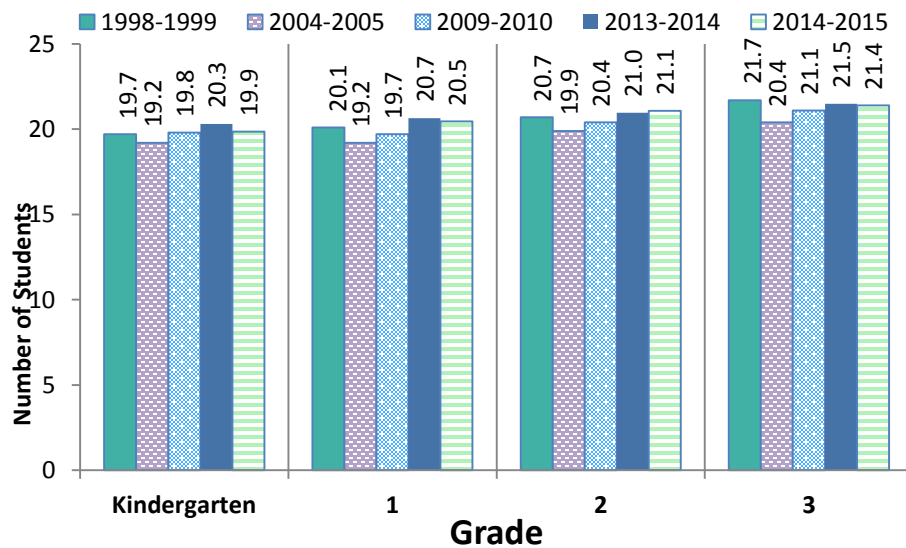
Overall, the decrease in average class size for all but second grade in 2014-2015 reversed the trend of recent years. Since the inception of the Class Size reduction funding, third grade class sizes continue to be below 1998-1999 levels.

TABLE 2. IOWA PUBLIC SCHOOL DISTRICTS AVERAGE CLASS SIZES FOR GRADES K-3

Grade	SCHOOL YEAR							
	1998-1999	2004-2005	2009-2010	2010-2011	2011-2012	2012-2013	2013-2014	2014-2015
Kindergarten	19.7	19.2	19.8	20	20.1	20.3	20.3	19.9
1	20.1	19.2	19.7	20.2	20.5	20.5	20.7	20.5
2	20.7	19.9	20.4	20.7	20.8	20.8	21.0	21.1
3	21.7	20.4	21.1	21.5	21.6	21.4	21.5	21.4

Source: Iowa Department of Education, Bureau of Information and Analysis Services, Basic Educational Data Survey, Class Size Survey File

FIGURE 1. IOWA PUBLIC SCHOOL DISTRICTS AVERAGE CLASS SIZES FOR GRADES K-3



Source: Iowa Department of Education, Bureau of Information and Analysis Services, Basic Educational Data Survey, Class Size Survey File

Tables 3 through 7 provide a breakdown of class size by enrollment size category.

TABLE 3. AVERAGE CLASS SIZE COMPARISON FOR IOWA PUBLIC SCHOOL DISTRICTS BY ENROLLMENT CATEGORY - KINDERGARTEN

Enrollment Category	School Year					
	1998-1999	2004-2005	2009-2010	2012-2013	2013-2014	2014-2015
<300	13.9	13.9	15.8	15.5	14.4	13.7
300-599	17.6	16.9	17.2	17.7	18.1	16.5
600-999	18.2	17.8	18.2	18.3	18.2	18.5
1,000-2,499	19.8	18.8	19.3	19.7	19.9	19.4
2,500-7,499	21.5	20.8	21.2	21.8	21.6	21.1
7,500+	20.7	20.8	21.6	22.4	22.3	21.9
State	19.7	19.2	19.8	20.3	20.3	19.9

Source: Iowa Department of Education, Bureau of Information and Analysis Services, Basic Educational Data Survey, Class Size Survey File

TABLE 4. AVERAGE CLASS SIZE COMPARISON FOR IOWA PUBLIC SCHOOL DISTRICTS BY ENROLLMENT CATEGORY - FIRST GRADE

Enrollment Category	School Year					
	1998-1999	2004-2005	2009-2010	2012-2013	2013-2014	2014-2015
<300	14.3	13.7	15.3	15.6	15.1	14.1
300-599	17.4	15.9	17.2	17.9	18.2	17.9
600-999	19.0	18.1	18.3	18.8	19.0	19.0
1,000-2,499	20.3	19.1	19.7	20.2	20.2	20.8
2,500-7,499	21.6	20.6	21.0	22.2	21.8	21.4
7,500+	21.1	20.9	21.2	21.8	22.5	21.7
State	20.3	19.2	19.7	20.5	20.7	20.5

Source: Iowa Department of Education, Bureau of Information and Analysis Services, Basic Educational Data Survey, Class Size Survey File

TABLE 5. AVERAGE CLASS SIZE COMPARISON FOR IOWA PUBLIC SCHOOL DISTRICTS BY ENROLLMENT CATEGORY - SECOND GRADE

Enrollment Category	School Year					
	1998-1999	2004-2005	2009-2010	2012-2013	2013-2014	2014-2015
<300	15.0	13.9	15.5	15.6	15.5	14.7
300-599	17.9	17.2	17.7	18.1	18.4	19.2
600-999	19.6	18.2	18.7	19.7	19.4	19.8
1,000-2,499	21.3	19.8	20.5	21.0	20.9	20.8
2,500-7,499	22.0	21.3	21.8	22.2	22.3	22.2
7,500+	21.7	21.8	21.9	21.8	22.4	22.3
State	20.7	19.9	20.4	20.8	21.0	21.1

Source: Iowa Department of Education, Bureau of Information and Analysis Services, Basic Educational Data Survey, Class Size Survey File

TABLE 6. AVERAGE CLASS SIZE COMPARISON FOR IOWA PUBLIC SCHOOL DISTRICTS BY ENROLLMENT CATEGORY THIRD GRADE

Enrollment Category	School Year					
	1998-1999	2004-2005	2009-2010	2012-2013	2013-2014	2014-2015
<300	16.9	14.4	16.5	15.3	15.8	14.8
300-599	19.3	17.6	18.6	18.4	18.2	18.5
600-999	20.3	19.1	20.0	20.1	20.5	20.0
1,000-2,499	21.9	20.6	21.1	21.6	21.8	21.4
2,500-7,499	23.0	21.9	22.0	22.5	22.6	22.5
7,500+	23.0	22.0	22.7	23.0	22.6	22.9
State	21.7	20.4	21.1	21.4	21.5	21.4

Source: Iowa Department of Education, Bureau of Information and Analysis Services, Basic Educational Data Survey, Class Size Survey File

TABLE 7. AVERAGE CLASS SIZE COMPARISON FOR IOWA PUBLIC SCHOOL DISTRICTS BY ENROLLMENT CATEGORY KINDERGARTEN TO THIRD GRADE

Enrollment Category	2014-2015			
	K	1st	2nd	3rd
<300	13.7	14.1	14.7	14.8
300-599	16.5	17.9	19.2	18.5
600-999	18.5	19.0	19.8	20.0
1000-2499	19.4	20.8	20.8	21.4
2500-7499	21.1	21.4	22.2	22.5
7500+	21.9	21.7	22.3	22.9
State	19.9	20.5	21.1	21.4

Source: Iowa Department of Education, Bureau of Information and Analysis Services, Basic Educational Data Survey, Class Size Survey File

The smallest districts of less than 300 student were the only size category able to meet the state goal of 17.0 students per classroom in 2014-2015. The average class size for all grades fluctuated between 14.1 to 14.8 students per classroom for the <300 enrollment category. The larger districts were more likely to show the highest average class sizes in 2014-2015. The 2,500-7,499 and 7,500+ enrollment categories experienced average class sizes of 21 or more for all grades since at least 2009-2010. Since the inception of the Class Size reduction funding, districts with 600 students or greater have been unable to reach the goal of 17 students per classroom for all grades.

TABLE 8. PERCENT OF IOWA PUBLIC SCHOOL DISTRICTS K-3 CLASSROOMS WITH GREATER THAN 17, 21, 25, AND 30 STUDENTS

Grade	1998-1999	2011-2012	2012-2013	2013-2014	2014-2015
Percent above 17					
Kindergarten	71.8	79.3	80.3	80.6	77.1
1	75.5	82.3	82.0	84.1	83.1
2	83.2	85.6	84.8	86.6	88.2
3	87.4	87.8	88.0	89.2	86.7

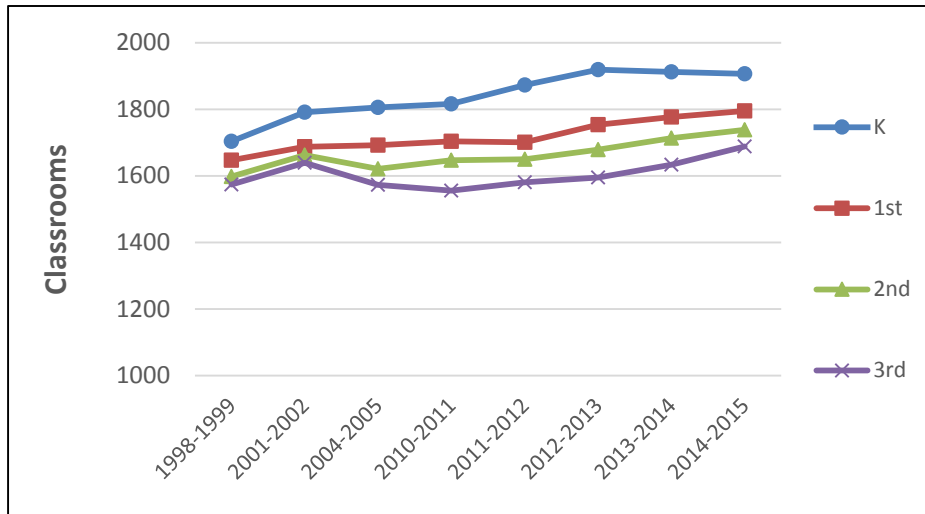
Percent above 21					
Kindergarten	34.4	38.7	40.5	39.7	35.3
1	34.8	42.1	42.3	44.2	40.4
2	41.9	43.2	44.4	47.8	47.7
3	53.2	54.1	51.8	52.7	52.1
Percent above 25					
Kindergarten	5.2	4.3	4.7	4.3	3.6
1	5.4	4.6	3.8	5.1	4.6
2	7.9	5.0	6.0	7.1	6.1
3	14.4	12.5	10.2	10.9	11.0
Percent above 30					
Kindergarten	0.2	0.1	0.0	0.0	0.2
1	0.2	0	0.0	0.0	0.0
2	0.2	0	0.1	0.0	0.1
3	0.4	0.1	0.1	0.2	0.0

Source: Iowa Department of Education, Bureau of Information and Analysis Services, Basic Educational Data Survey, Class Size Survey File

Overall, the percentage of classrooms above the targets decreased in 2014-2015 from the previous year. The most notable exception was the percentage of second grade classrooms above 17 students per classroom, which has continued to increase. The greatest decreases were in kindergarten and third grade classrooms. The percentage of third grade classes above each benchmark decreased below the percentages from the inception of the program. Similarly the percentage of classrooms above 25 students have dropped below levels at the inception of the program in all grades.

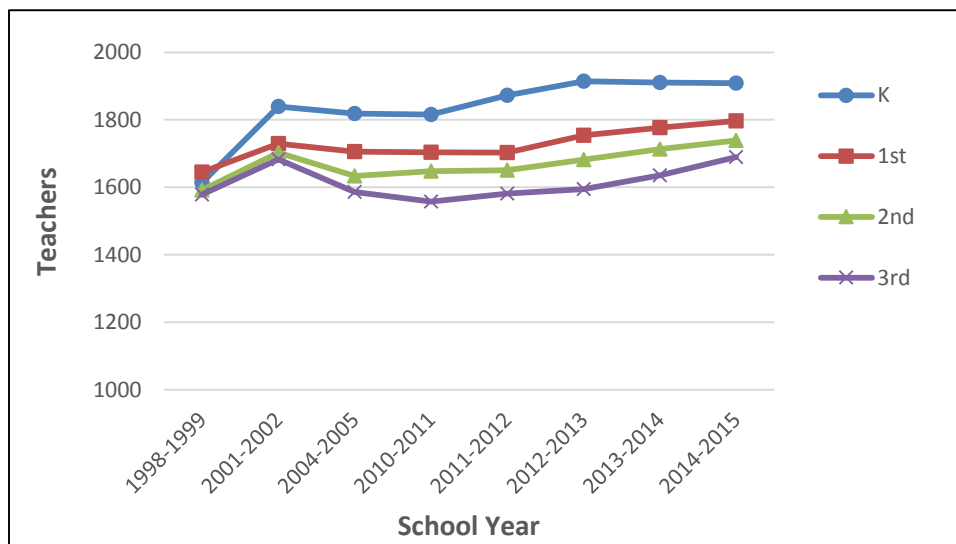
Increases in the number of teachers have outpaced increases in enrollment for kindergarten and third grade since the inception of the program. Figures 3 and 4 below suggest these achievements can be attributable to larger increases in the number of kindergarten teachers and lower enrollment increases in third grade.

FIGURE 2. NUMBER OF IOWA PUBLIC SCHOOL DISTRICTS K-3 CLASSROOMS



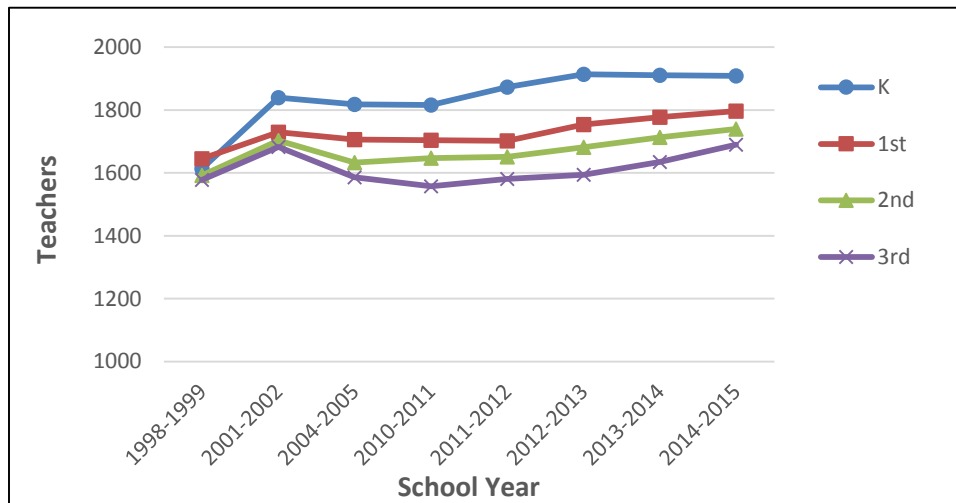
Source: Iowa Department of Education, Bureau of Information and Analysis Services, Basic Educational Data Survey, Class Size Survey File

FIGURE 3. NUMBER OF IOWA PUBLIC SCHOOL DISTRICTS K-3 STUDENTS



Source: Iowa Department of Education, Bureau of Information and Analysis Services, Basic Educational Data Survey, Class Size Survey File

FIGURE 4. NUMBER OF IOWA PUBLIC SCHOOL DISTRICTS K-3 TEACHERS



Source: Iowa Department of Education, Bureau of Information and Analysis Services, Basic Educational Data Survey, Class Size Survey File

Changes in enrollment from 1998-1999 to 2014-2015 outpaced the changes in average class size during the same period for all but third grade, which saw only a .8% increase in enrollment (see Tables 9 and 10). Kindergarten saw the largest increase in enrollment at 12.5% from 1998-1999 to 2014-2015. Note: These enrollment figures are from a different source system and include “other” classes that are not included in the Class Size Survey source file.

TABLE 9. IOWA PUBLIC SCHOOL DISTRICT BEDS ENROLLMENT FOR KINDERGARTEN THROUGH THIRD GRADE

Grade	1998-1999 Enrollment	2014-2015 Enrollment	Absolute Difference in Enrollment	Percent Change in Enrollment
Kindergarten	35,772	40,244	4,472	12.5%
1	35,699	37,446	1,747	4.9%
2	35,866	37,423	1,557	4.3%
3	36,500	36,780	280	0.8%

Source: Iowa Department of Education, Bureau of Information and Analysis Services, Basic Educational Data Survey (BEDS) Enrollment Files

TABLE 10. IOWA PUBLIC SCHOOL DISTRICTS CHANGE IN AVERAGE CLASS SIZE VS. BEDS ENROLLMENT

1998-1999 to 2014-2015		
Grade	Percent Change in Class Size	Percent Change in Enrollment
Kindergarten	3.1%	12.5%
1	2.7%	4.9%
2	1.3%	4.3%
3	-0.9%	0.8%

Source: Iowa Department of Education, Bureau of Information and Analysis Services, Student Reporting in Iowa and Class Size Survey File

EXPENDITURES

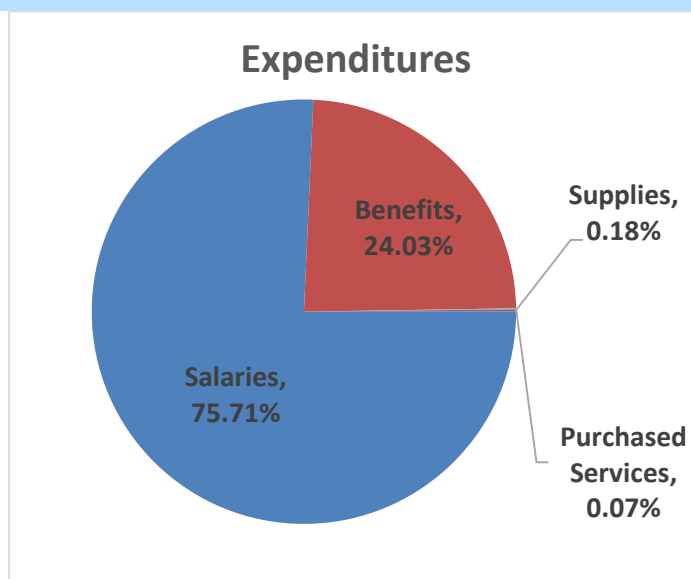
The most recent expenditure data available is from Fiscal Year 2014 (FY 2014) District expenditures decreased slightly in FY 2014 to \$30,383,745 with salaries consuming the largest percentage of the total. Purchased Services, Supplies and Other categories were below 1.0 percent each (see Table 11 and Figure 5).

TABLE 11. FY14 IOWA EARLY INTERVENTION BLOCK GRANT PROGRAM FY14 EXPENDITURES BY OBJECT AS OF 12/5/2014

Expenditures	Amount	Percent
Salaries	\$23,448,577	75.71%
Benefits	\$7,443,860	24.03%
Purchased Services	\$22,152	0.07%
Supplies	\$56,855	0.18%
Total	\$30,971,444	100%

Source: FY 2014 unedited Certified Annual Report as of 12/5/2014.
 Note: Totals may not add to 100 percent due to rounding.

**FIGURE 5. FY14 IOWA EARLY INTERVENTION BLOCK GRANT PROGRAM
FY14 EXPENDITURES BY OBJECT AS OF 12/5/2014**



Source: FY 2014 unedited Certified Annual Report as of 12/5/2015

Note: Totals may not add to 100 percent due to rounding.

In FY 2014, the largest districts (+7,500) spent the smallest percentage of early intervention funds on staff salaries at 73.3 percent. Smaller districts in the 300-599 and 600-999 enrollment categories spent the highest percentage of funds on staff salaries, above 77 percent, yet paid fewer benefits than the larger districts. The smallest districts utilized purchased services, and supplies the most in FY 2014 at just over 3 percent. Overall, the percentage difference of categorical expenditures did not vary significantly among the enrollment categories.

TABLE 12. OBJECT CATEGORY EXPENDITURES AS A PERCENT OF TOTAL EARLY INTERVENTION EXPENDITURES BY ENROLLMENT CATEGORY FY14

Enrollment Category	Salaries	Employee Benefits	Purchased Services	Supplies	Other
<300	77.41%	19.43%	3.03%	0.13%	0.00%
<600	75.80%	24.09%	0.00%	0.11%	0.00%
<1,000	76.90%	23.06%	0.01%	0.03%	0.00%
<2,500	76.60%	23.31%	0.00%	0.10%	0.00%
<7,500	75.90%	24.01%	0.02%	0.07%	0.00%
7,500+	74.43%	25.19%	0.00%	0.39%	0.00%

Source: FY 2013 unedited Certified Annual Report as of 12/5/2014

Note: Totals may not add to 100.0 percent due to rounding.

APPENDICES

Appendix A—IOWA PUBLIC SCHOOL DISTRICT CLASS SIZE
FREQUENCY DISTRIBUTIONS BY GRADE

Appendix B—IOWA PUBLIC SCHOOL DISTRICT CLASS SIZE
SUMMARY STATISTICS FOR KINDERGARTEN
THROUGH THIRD GRADE

Appendix C—IOWA PUBLIC SCHOOL DISTRICT AVERAGE CLASS
SIZE (AVGCS) FOR KINDERGARTEN THROUGH
THIRD GRADE

Appendix D—IOWA PUBLIC SCHOOL DISTRICTS' FY 13 EARLY
INTERVENTION BLOCK GRANT PROGRAM
EXPENDITURES BY OBJECT AS OF 11/13/2013

Appendix E—IOWA PUBLIC SCHOOL DISTRICTS' EARLY
INTERVENTION BLOCK GRANT PROGRAM
ALLOCATIONS

Appendix F—IOWA PUBLIC SCHOOL DISTRICTS' PERCENT NOT
PROFICIENT IN 3RD GRADE READING

APPENDIX A. IOWA PUBLIC SCHOOL DISTRICT CLASS SIZE FREQUENCY DISTRIBUTIONS 2014-2015

KINDERGARTEN				
Number of Students	Frequency	Percent	Cumulative Frequency	Cumulative Percent
3	1	0.05	1	0.05
4	1	0.05	2	0.10
5	3	0.16	5	0.26
6	2	0.10	7	0.37
7	1	0.05	8	0.42
8	6	0.31	14	0.73
9	7	0.37	21	1.10
10	14	0.73	35	1.84
11	13	0.68	48	2.52
12	24	1.26	72	3.78
13	43	2.26	115	6.03
14	60	3.15	175	9.18
15	65	3.41	240	12.59
16	89	4.67	329	17.26
17	107	5.61	436	22.88
18	160	8.39	596	31.27
19	226	11.86	822	43.13
20	227	11.91	1049	55.04
21	184	9.65	1233	64.69
22	183	9.60	1416	74.29
23	166	8.71	1582	83.00
24	151	7.92	1733	90.92
25	105	5.51	1838	96.43
26	41	2.15	1879	98.58
27	12	0.63	1891	99.21

KINDERGARTEN				
Number of Students	Frequency	Percent	Cumulative Frequency	Cumulative Percent
28	10	0.52	1901	99.74
29	2	0.10	1903	99.84
32	3	0.16	1906	100.00

Source: Iowa Department of Education, Bureau of Information and Analysis Services, Basic Educational Data Survey, Class Size Survey File

First Grade				
Number of Students	Frequency	Percent	Cumulative Frequency	Cumulative Percent
3	1	0.06	1	0.06
5	1	0.06	2	0.11
6	2	0.11	4	0.22
8	2	0.11	6	0.33
9	3	0.17	9	0.50
10	1	0.06	10	0.56
11	5	0.28	15	0.84
12	10	0.56	25	1.39
13	22	1.23	47	2.62
14	26	1.45	73	4.07
15	51	2.84	124	6.91
16	73	4.07	197	10.97
17	106	5.91	303	16.88
18	147	8.19	450	25.07
19	193	10.75	643	35.82
20	209	11.64	852	47.47
21	217	12.09	1069	59.55
22	233	12.98	1302	72.53

First Grade				
Number of Students	Frequency	Percent	Cumulative Frequency	Cumulative Percent
23	190	10.58	1492	83.12
24	132	7.35	1624	90.47
25	88	4.90	1712	95.38
26	58	3.23	1770	98.61
27	22	1.23	1792	99.83
28	2	0.11	1794	99.94
29	1	0.06	1795	100.00

Source: Iowa Department of Education, Bureau of Information and Analysis Services, Basic Educational Data Survey, Class Size Survey File

Second Grade				
Number of Students	Frequency	Percent	Cumulative Frequency	Cumulative Percent
6	1	0.06	1	0.06
8	3	0.17	4	0.23
9	2	0.12	6	0.35
10	3	0.17	9	0.52
11	4	0.23	13	0.75
12	14	0.81	27	1.55
13	14	0.81	41	2.36
14	19	1.09	60	3.45
15	32	1.84	92	5.29
16	44	2.53	136	7.83
17	69	3.97	205	11.80
18	121	6.96	326	18.76
19	163	9.38	489	28.14
20	193	11.10	682	39.24

Second Grade				
Number of Students	Frequency	Percent	Cumulative Frequency	Cumulative Percent
21	227	13.06	909	52.30
22	228	13.12	1137	65.42
23	199	11.45	1336	76.87
24	182	10.47	1518	87.34
25	114	6.56	1632	93.90
26	66	3.80	1698	97.70
27	28	1.61	1726	99.31
28	8	0.46	1734	99.77
29	2	0.12	1736	99.88
30	1	0.06	1737	99.94
32	1	0.06	1738	100.00

Source: Iowa Department of Education, Bureau of Information and Analysis Services, Basic Educational Data Survey, Class Size Survey File

Third Grade				
Number of Students	Frequency	Percent	Cumulative Frequency	Cumulative Percent
6	2	0.12	2	0.12
7	1	0.06	3	0.18
8	1	0.06	4	0.24
9	3	0.18	7	0.41
10	3	0.18	10	0.59
11	3	0.18	13	0.77
12	6	0.36	19	1.13
13	9	0.53	28	1.66
14	18	1.07	46	2.73
15	41	2.43	87	5.15

Third Grade				
Number of Students	Frequency	Percent	Cumulative Frequency	Cumulative Percent
16	44	2.61	131	7.76
17	94	5.57	225	13.33
18	103	6.10	328	19.43
19	139	8.23	467	27.67
20	154	9.12	621	36.79
21	188	11.14	809	47.93
22	203	12.03	1012	59.95
23	190	11.26	1202	71.21
24	177	10.49	1379	81.69
25	123	7.29	1502	88.98
26	96	5.69	1598	94.67
27	58	3.44	1656	98.10
28	21	1.24	1677	99.35
29	8	0.47	1685	99.82
30	3	0.18	1688	100.00

Source: Iowa Department of Education, Bureau of Information and Analysis Services, Basic Educational Data Survey, Class Size Survey File

**APPENDIX B. IOWA PUBLIC SCHOOL DISTRICT CLASS SIZE SUMMARY
STATISTICS FOR KINDERGARTEN THROUGH THIRD GRADE
2014-2015**

Grade	Number of Students	Number of Classrooms	FTE Teachers	Average Class Size	Minimum Class Size	Maximum Class Size
Kindergarten	38,819	1912	1910.5	20.3	3	30
Grade 1	36,699	1777	1777.0	20.7	4	30
Grade 2	35,904	1713	1713.6	21.0	6	30
Grade 3	35,106	1633	1635.0	21.5	3	32
	146,528	7035	7036.0	20.7	3	32

Source: Iowa Department of Education, Bureau of Information and Analysis Services, Basic Educational Data Survey, Class Size Survey File

Note: The number of students for each grade does not match the Basic Educational Data Survey enrollment figures due to the exclusion of multi-age and/or multi-level classrooms from the class size data.

**APPENDIX C. IOWA PUBLIC SCHOOL DISTRICT AVERAGE CLASS SIZE
(AVGCS) FOR KINDERGARTEN THROUGH THIRD GRADE**

District Number	District Name	Grade	AVGCS 1998-1999	AVGCS 2013-2014	AVGCS 2014-2015	Percent Change from 2013-14 to 2014-15	Percent Change from 1998-99 to 2014-15
0441	A-H-S-T	K	14.3	20.0	14.0	-0.3	0.0
0441	A-H-S-T	01	16.0	18.0	18.5	0.0	0.2
0441	A-H-S-T	02	17.7	19.0	21.5	0.1	0.2
0441	A-H-S-T	03	17.3	16.0	18.5	0.2	0.1
0009	AGWSR	K	19.7	19.5	22.0	0.1	0.1
0009	AGWSR	01	19.0	15.7	20.0	0.3	0.1
0009	AGWSR	02	17.3	21.5	15.7	-0.3	-0.1
0009	AGWSR	03	15.5	23.0	20.0	-0.1	0.3
0018	Adair-Casey	K	13.5	22.0	17.0	-0.2	0.3
0018	Adair-Casey	01	16.5	18.0	22.0	0.2	0.3
0018	Adair-Casey	02	17.0	22.0	18.0	-0.2	0.1
0018	Adair-Casey	03	13.5	28.0	19.0	-0.3	0.4
0027	Adel DeSoto Minburn	K	16.8	15.6	18.2	0.2	0.1
0027	Adel DeSoto Minburn	01	19.0	18.9	18.0	0.0	-0.1
0027	Adel DeSoto Minburn	02	22.6	19.6	20.3	0.0	-0.1
0027	Adel DeSoto Minburn	03	20.8	20.3	19.3	-0.1	-0.1
0063	Akron Westfield	K		18.5	21.5	0.2	
0063	Akron Westfield	01		17.7	19.0	0.1	
0063	Akron Westfield	02		22.5	19.0	-0.2	
0063	Akron Westfield	03		19.0	22.0	0.2	
0072	Albert City-Truesdale	K	22.0	15.0	16.0	0.1	-0.3
0072	Albert City-Truesdale	01	15.0	16.0	16.0	0.0	0.1
0072	Albert City-Truesdale	02	24.0	8.0	17.0	1.1	-0.3
0072	Albert City-Truesdale	03	15.0	18.0	10.0	-0.4	-0.3
0081	Albia	K	22.0	19.2	20.0	0.0	-0.1

District Number	District Name	Grade	AVGCS 1998-1999	AVGCS 2013-2014	AVGCS 2014-2015	Percent Change from 2013-14 to 2014-15	Percent Change from 1998-99 to 2014-15
0081	Albia	01	21.0	21.8	21.0	0.0	0.0
0081	Albia	02	20.0	22.8	22.8	0.0	0.1
0081	Albia	03	19.4	21.5	21.8	0.0	0.1
0099	Alburnett	K	22.5	20.0	23.0	0.2	0.0
0099	Alburnett	01	16.5	25.0	20.0	-0.2	0.2
0099	Alburnett	02	19.0	18.3	24.0	0.3	0.3
0099	Alburnett	03	21.5	22.0	17.3	-0.2	-0.2
0108	Alden	K	13.0	20.0	13.5	-0.3	0.0
0108	Alden	01	20.0	14.0	16.0	0.1	-0.2
0108	Alden	02	12.5	17.0	13.0	-0.2	0.0
0108	Alden	03	15.5	20.0	14.5	-0.3	-0.1
0126	Algona	K	18.0	16.8	20.2	0.2	0.1
0126	Algona	01	17.8	17.5	23.5	0.3	0.3
0126	Algona	02	17.4	18.0	22.2	0.2	0.3
0126	Algona	03	19.7	18.2	22.2	0.2	0.1
0135	Allamakee	K	18.5	17.2	13.6	-0.2	-0.3
0135	Allamakee	01	21.8	18.8	16.8	-0.1	-0.2
0135	Allamakee	02	17.3	19.8	17.5	-0.1	0.0
0135	Allamakee	03	23.3	19.5	17.8	-0.1	-0.2
0171	Alta	K	24.0	20.3	18.0	-0.1	-0.3
0171	Alta	01	21.0	16.3	15.0	-0.1	-0.3
0171	Alta	02	21.0	22.0	25.5	0.2	0.2
0171	Alta	03	22.5	22.5	20.5	-0.1	-0.1
0225	Ames	K	19.8	22.6	21.4	-0.1	0.1
0225	Ames	01	19.2	21.9	20.8	-0.1	0.1
0225	Ames	02	19.0	21.1	23.3	0.1	0.2

District Number	District Name	Grade	AVGCS 1998-1999	AVGCS 2013-2014	AVGCS 2014-2015	Percent Change from 2013-14 to 2014-15	Percent Change from 1998-99 to 2014-15
0225	Ames	03	19.3	23.3	21.3	-0.1	0.1
0234	Anamosa	K	18.8	21.0	20.4	0.0	0.1
0234	Anamosa	01	18.0	23.0	22.3	0.0	0.2
0234	Anamosa	02	21.5	21.5	22.3	0.0	0.0
0234	Anamosa	03	21.7	21.0	20.5	0.0	-0.1
0243	Andrew	K	24.0	22.0	16.0	-0.3	-0.3
0243	Andrew	01	24.0	16.0	20.0	0.3	-0.2
0243	Andrew	02	16.5	18.0	20.0	0.1	0.2
0243	Andrew	03	19.0	11.0	19.0	0.7	0.0
0261	Ankeny	K	24.4	22.9	23.4	0.0	0.0
0261	Ankeny	01	24.2	23.5	23.6	0.0	0.0
0261	Ankeny	02	23.9	23.8	23.4	0.0	0.0
0261	Ankeny	03	26.3	24.9	23.7	0.0	-0.1
0279	Aplington-Parkersburg	K	16.5	19.8	16.4	-0.2	0.0
0279	Aplington-Parkersburg	01	17.0	21.7	22.3	0.0	0.3
0279	Aplington-Parkersburg	02	19.0	18.3	21.7	0.2	0.1
0279	Aplington-Parkersburg	03	23.7	20.7	18.0	-0.1	-0.2
0355	Ar-We-Va	K	14.5	22.0	17.0	-0.2	0.2
0355	Ar-We-Va	01	13.5	19.0	24.0	0.3	0.8
0355	Ar-We-Va	02	15.0	15.0	18.0	0.2	0.2
0355	Ar-We-Va	03	16.5	15.0	13.0	-0.1	-0.2
0387	Atlantic	K	18.0	16.7	17.4	0.0	0.0
0387	Atlantic	01	19.3	17.8	20.6	0.2	0.1
0387	Atlantic	02	22.7	19.7	21.3	0.1	-0.1
0387	Atlantic	03	22.3	19.8	19.5	0.0	-0.1
0414	Audubon	K	18.7	21.0	22.5	0.1	0.2

District Number	District Name	Grade	AVGCS 1998-1999	AVGCS 2013-2014	AVGCS 2014-2015	Percent Change from 2013-14 to 2014-15	Percent Change from 1998-99 to 2014-15
0414	Audubon	01	18.7	19.0	21.5	0.1	0.1
0414	Audubon	02	21.3	19.5	20.0	0.0	-0.1
0414	Audubon	03	20.0	16.0	19.5	0.2	0.0
0423	Aurelia	K	14.0	15.5	13.0	-0.2	-0.1
0423	Aurelia	01	11.5	15.0	15.0	0.0	0.3
0423	Aurelia	02	12.5	11.0	11.0	0.0	-0.1
0423	Aurelia	03	15.5	12.0	11.0	-0.1	-0.3
0540	BCLUW	K	23.0	19.0	16.5	-0.1	-0.3
0540	BCLUW	01	19.3	25.0	21.0	-0.2	0.1
0540	BCLUW	02	20.0	23.5	23.5	0.0	0.2
0540	BCLUW	03	17.0	21.0	23.0	0.1	0.4
0472	Ballard	K	21.4	20.0	18.9	-0.1	-0.1
0472	Ballard	01	23.5	23.3	20.5	-0.1	-0.1
0472	Ballard	02	21.8	23.2	23.0	0.0	0.1
0472	Ballard	03	23.3	24.4	21.8	-0.1	-0.1
0504	Battle Creek-Ida Grove	K	12.4	19.0	14.7	-0.2	0.2
0504	Battle Creek-Ida Grove	01	12.5	19.0	17.7	-0.1	0.4
0504	Battle Creek-Ida Grove	02	14.5	20.7	18.0	-0.1	0.2
0504	Battle Creek-Ida Grove	03	21.3	20.5	20.0	0.0	-0.1
0513	Baxter	K	16.0	16.5	13.0	-0.2	-0.2
0513	Baxter	01	23.0	21.0	15.5	-0.3	-0.3
0513	Baxter	02	22.0	19.5	18.5	-0.1	-0.2
0513	Baxter	03	24.0	20.5	20.0	0.0	-0.2
0549	Bedford	K	18.0	16.5	16.0	0.0	-0.1
0549	Bedford	01	24.0	14.5	16.5	0.1	-0.3
0549	Bedford	02	24.0	22.5	15.0	-0.3	-0.4

District Number	District Name	Grade	AVGCS 1998-1999	AVGCS 2013-2014	AVGCS 2014-2015	Percent Change from 2013-14 to 2014-15	Percent Change from 1998-99 to 2014-15
0549	Bedford	03	27.0	13.0	23.0	0.8	-0.1
0576	Belle Plaine	K	15.7	16.0	15.3	0.0	0.0
0576	Belle Plaine	01	19.0	17.5	16.5	-0.1	-0.1
0576	Belle Plaine	02	21.7	13.5	17.0	0.3	-0.2
0576	Belle Plaine	03	18.3	23.5	14.0	-0.4	-0.2
0585	Bellevue	K	24.5	20.7	18.0	-0.1	-0.3
0585	Bellevue	01	25.0	16.7	19.5	0.2	-0.2
0585	Bellevue	02	19.5	14.8	18.0	0.2	-0.1
0585	Bellevue	03	17.0	16.7	16.7	0.0	0.0
0594	Belmond-Klemme	K	19.7	20.8	17.0	-0.2	-0.1
0594	Belmond-Klemme	01	25.5	24.5	22.7	-0.1	-0.1
0594	Belmond-Klemme	02	20.0	22.0	26.0	0.2	0.3
0594	Belmond-Klemme	03	19.5	29.5	21.0	-0.3	0.1
0603	Bennett	K	13.0	15.0	16.0	0.1	0.2
0603	Bennett	01	16.0	8.0	14.0	0.8	-0.1
0603	Bennett	02	16.0	8.0	8.0	0.0	-0.5
0603	Bennett	03	19.0	9.0	8.0	-0.1	-0.6
0609	Benton	K	18.8	18.4	17.5	-0.1	-0.1
0609	Benton	01	20.7	15.9	17.3	0.1	-0.2
0609	Benton	02	18.2	16.6	16.2	0.0	-0.1
0609	Benton	03	22.2	16.9	16.2	0.0	-0.3
0621	Bettendorf	K	23.6	23.3	24.1	0.0	0.0
0621	Bettendorf	01	23.4	21.5	24.9	0.2	0.1
0621	Bettendorf	02	24.2	22.7	21.2	-0.1	-0.1
0621	Bettendorf	03	24.1	22.9	24.5	0.1	0.0
0720	Bondurant-Farrar	K	22.0	21.1	20.2	0.0	-0.1

District Number	District Name	Grade	AVGCS 1998-1999	AVGCS 2013-2014	AVGCS 2014-2015	Percent Change from 2013-14 to 2014-15	Percent Change from 1998-99 to 2014-15
0720	Bondurant-Farrar	01	20.8	20.1	19.1	0.0	-0.1
0720	Bondurant-Farrar	02	21.0	22.4	20.9	-0.1	0.0
0720	Bondurant-Farrar	03	20.7	24.0	23.4	0.0	0.1
0729	Boone	K	16.8	19.4	18.6	0.0	0.1
0729	Boone	01	20.4	18.0	21.8	0.2	0.1
0729	Boone	02	22.0	20.9	21.3	0.0	0.0
0729	Boone	03	22.8	21.3	23.3	0.1	0.0
0747	Boyden-Hull	K	16.7	13.8	13.8	0.0	-0.2
0747	Boyden-Hull	01	20.5	16.0	13.3	-0.2	-0.3
0747	Boyden-Hull	02	20.0	17.8	20.5	0.2	0.0
0747	Boyden-Hull	03	22.0	23.7	16.0	-0.3	-0.3
1917	Boyer Valley	K	13.8	15.0	15.5	0.0	0.1
1917	Boyer Valley	01	16.0	14.0	19.5	0.4	0.2
1917	Boyer Valley	02	17.7	13.5	14.5	0.1	-0.2
1917	Boyer Valley	03	17.0	13.5	17.0	0.3	0.0
0846	Brooklyn-Guernsey-Malcom	K	13.7	24.0	19.5	-0.2	0.4
0846	Brooklyn-Guernsey-Malcom	01	17.3	20.0	23.0	0.2	0.3
0846	Brooklyn-Guernsey-Malcom	02	16.7	20.0	17.5	-0.1	0.0
0846	Brooklyn-Guernsey-Malcom	03	19.0	20.0	19.5	0.0	0.0
0882	Burlington	K	18.7	21.3	22.9	0.1	0.2
0882	Burlington	01	17.1	21.1	22.9	0.1	0.3
0882	Burlington	02	19.6	21.2	23.1	0.1	0.2
0882	Burlington	03	22.5	22.5	21.0	-0.1	-0.1
0916	CAL	K	24.0	10.0	12.0	0.2	-0.5
0916	CAL	01	20.0	20.0	9.0	-0.6	-0.6
0916	CAL	02	22.0	20.0	16.0	-0.2	-0.3

District Number	District Name	Grade	AVGCS 1998-1999	AVGCS 2013-2014	AVGCS 2014-2015	Percent Change from 2013-14 to 2014-15	Percent Change from 1998-99 to 2014-15
0916	CAL	03	20.0	20.0	18.0	-0.1	-0.1
0914	CAM	K	17.3	16.0	16.0	0.0	-0.1
0914	CAM	01	16.5	21.5	14.0	-0.3	-0.2
0914	CAM	02	23.0	16.0	22.0	0.4	0.0
0914	CAM	03	23.5	18.5	15.5	-0.2	-0.3
0918	Calamus-Wheatland	K	18.0	19.5	17.5	-0.1	0.0
0918	Calamus-Wheatland	01	15.0	17.0	19.5	0.1	0.3
0918	Calamus-Wheatland	02	19.5	16.0	17.5	0.1	-0.1
0918	Calamus-Wheatland	03	23.0	14.0	17.5	0.3	-0.2
0936	Camanche	K	22.7	17.0	19.6	0.2	-0.1
0936	Camanche	01	15.5	21.3	16.5	-0.2	0.1
0936	Camanche	02	20.3	17.8	23.5	0.3	0.2
0936	Camanche	03	19.8	21.8	18.0	-0.2	-0.1
0977	Cardinal	K	23.5	20.3	18.0	-0.1	-0.2
0977	Cardinal	01	23.0	21.0	19.7	-0.1	-0.1
0977	Cardinal	02	22.0	22.5	23.5	0.0	0.1
0977	Cardinal	03	24.0	20.5	27.0	0.3	0.1
0981	Carlisle	K	24.3	19.7	18.4	-0.1	-0.2
0981	Carlisle	01	16.5	22.3	22.0	0.0	0.3
0981	Carlisle	02	21.8	22.7	22.9	0.0	0.0
0981	Carlisle	03	23.5	20.4	23.5	0.2	0.0
0999	Carroll	K	20.7	24.6	25.0	0.0	0.2
0999	Carroll	01	20.7	22.2	25.2	0.1	0.2
0999	Carroll	02	22.6	24.2	23.2	0.0	0.0
0999	Carroll	03	24.3	23.7	24.8	0.0	0.0
1044	Cedar Falls	K	20.1	21.6	19.7	-0.1	0.0

District Number	District Name	Grade	AVGCS 1998-1999	AVGCS 2013-2014	AVGCS 2014-2015	Percent Change from 2013-14 to 2014-15	Percent Change from 1998-99 to 2014-15
1044	Cedar Falls	01	21.3	20.2	20.7	0.0	0.0
1044	Cedar Falls	02	19.9	21.2	21.7	0.0	0.1
1044	Cedar Falls	03	20.5	20.3	21.4	0.1	0.0
1053	Cedar Rapids	K	24.3	21.9	21.2	0.0	-0.1
1053	Cedar Rapids	01	24.4	21.3	22.3	0.0	-0.1
1053	Cedar Rapids	02	24.7	22.9	22.0	0.0	-0.1
1053	Cedar Rapids	03	24.1	22.0	22.8	0.0	-0.1
1062	Center Point-Urbana	K	21.5	18.4	18.7	0.0	-0.1
1062	Center Point-Urbana	01	17.0	19.5	17.3	-0.1	0.0
1062	Center Point-Urbana	02	21.0	17.8	19.0	0.1	-0.1
1062	Center Point-Urbana	03	24.0	18.8	22.6	0.2	-0.1
1071	Centerville	K	21.5	20.6	23.4	0.1	0.1
1071	Centerville	01	21.0	19.2	21.6	0.1	0.0
1071	Centerville	02	20.5	19.4	19.4	0.0	-0.1
1071	Centerville	03	17.5	18.8	19.8	0.1	0.1
1089	Central City	K	19.0	16.5	8.7	-0.5	-0.5
1089	Central City	01	20.0	15.5	17.0	0.1	-0.2
1089	Central City	02	22.0	12.5	15.5	0.2	-0.3
1089	Central City	03	18.0	16.5	13.5	-0.2	-0.3
1082	Central DeWitt	K	20.5	18.7	19.0	0.0	-0.1
1082	Central DeWitt	01	19.4	19.3	19.8	0.0	0.0
1082	Central DeWitt	02	20.6	19.7	18.8	0.0	-0.1
1082	Central DeWitt	03	21.3	20.2	19.4	0.0	-0.1
1093	Central Decatur	K	23.5	20.0	18.3	-0.1	-0.2
1093	Central Decatur	01	22.0	21.7	19.0	-0.1	-0.1
1093	Central Decatur	02	26.0	16.0	21.3	0.3	-0.2

District Number	District Name	Grade	AVGCS 1998-1999	AVGCS 2013-2014	AVGCS 2014-2015	Percent Change from 2013-14 to 2014-15	Percent Change from 1998-99 to 2014-15
1093	Central Decatur	03	24.5	21.0	26.0	0.2	0.1
1079	Central Lee	K	23.0	17.5	19.0	0.1	-0.2
1079	Central Lee	01	21.0	20.3	19.0	-0.1	-0.1
1079	Central Lee	02	23.0	22.7	22.3	0.0	0.0
1079	Central Lee	03	19.8	19.5	24.7	0.3	0.2
1095	Central Lyon	K	14.3	14.8	15.3	0.0	0.1
1095	Central Lyon	01	21.3	19.7	17.3	-0.1	-0.2
1095	Central Lyon	02	16.7	19.0	21.0	0.1	0.3
1095	Central Lyon	03	16.0	14.8	17.0	0.2	0.1
4772	Central Springs	K	19.3	17.5	15.3	-0.1	-0.2
4772	Central Springs	01	20.3	18.3	15.5	-0.2	-0.2
4772	Central Springs	02	22.8	18.0	19.0	0.1	-0.2
4772	Central Springs	03	18.8	23.5	15.0	-0.4	-0.2
1107	Chariton	K	18.2	20.2	19.6	0.0	0.1
1107	Chariton	01	23.0	21.0	20.0	0.0	-0.1
1107	Chariton	02	23.2	22.8	22.2	0.0	0.0
1107	Chariton	03	21.0	22.0	22.8	0.0	0.1
1116	Charles City	K	16.3	23.0	17.8	-0.2	0.1
1116	Charles City	01	19.3	21.2	23.0	0.1	0.2
1116	Charles City	02	20.0	21.0	19.7	-0.1	0.0
1116	Charles City	03	22.2	20.6	21.0	0.0	-0.1
1134	Charter Oak-Ute	K	13.0	21.0	19.0	-0.1	0.5
1134	Charter Oak-Ute	01	13.5	12.5	16.0	0.3	0.2
1134	Charter Oak-Ute	02	16.0	22.0	25.0	0.1	0.6
1134	Charter Oak-Ute	03	16.0	16.0	24.0	0.5	0.5
1152	Cherokee	K	17.8	17.5	22.0	0.3	0.2

District Number	District Name	Grade	AVGCS 1998-1999	AVGCS 2013-2014	AVGCS 2014-2015	Percent Change from 2013-14 to 2014-15	Percent Change from 1998-99 to 2014-15
1152	Cherokee	01	18.0	20.3	20.8	0.0	0.2
1152	Cherokee	02	22.0	18.5	19.5	0.1	-0.1
1152	Cherokee	03	23.8	19.8	20.3	0.0	-0.1
1197	Clarinda	K	19.5	17.0	18.0	0.1	-0.1
1197	Clarinda	01	18.8	23.3	21.3	-0.1	0.1
1197	Clarinda	02	22.0	18.3	23.0	0.3	0.0
1197	Clarinda	03	21.3	19.5	18.5	-0.1	-0.1
1206	Clarion-Goldfield-Dows	K	16.3	17.8	24.0	0.3	0.5
1206	Clarion-Goldfield-Dows	01	16.5	18.0	22.3	0.2	0.4
1206	Clarion-Goldfield-Dows	02	19.3	17.5	23.0	0.3	0.2
1206	Clarion-Goldfield-Dows	03	19.5	16.0	21.7	0.4	0.1
1211	Clarke	K	19.0	20.2	18.3	-0.1	0.0
1211	Clarke	01	21.4	17.8	19.0	0.1	-0.1
1211	Clarke	02	17.0	19.3	20.4	0.1	0.2
1211	Clarke	03	23.0	22.4	24.2	0.1	0.1
1215	Clarksville	K	27.0	14.5	10.0	-0.3	-0.6
1215	Clarksville	01	14.0	12.5	13.0	0.0	-0.1
1215	Clarksville	02	14.0	15.5	12.5	-0.2	-0.1
1215	Clarksville	03	21.0	18.0	15.0	-0.2	-0.3
1218	Clay Central-Everly	K	13.5	24.0	20.0	-0.2	0.5
1218	Clay Central-Everly	01	19.0	17.0	21.0	0.2	0.1
1218	Clay Central-Everly	02	15.0	21.0	16.0	-0.2	0.1
1218	Clay Central-Everly	03	24.5	20.0	22.0	0.1	-0.1
2763	Clayton Ridge	K	18.0	13.3	21.3	0.6	0.2
2763	Clayton Ridge	01	15.7	15.8	15.7	0.0	0.0
2763	Clayton Ridge	02	16.3	10.5	21.3	1.0	0.3

District Number	District Name	Grade	AVGCS 1998-1999	AVGCS 2013-2014	AVGCS 2014-2015	Percent Change from 2013-14 to 2014-15	Percent Change from 1998-99 to 2014-15
2763	Clayton Ridge	03	21.0	13.0	18.3	0.4	-0.1
1221	Clear Creek Amana	K	17.8	21.8	17.0	-0.2	0.0
1221	Clear Creek Amana	01	17.3	17.5	20.4	0.2	0.2
1221	Clear Creek Amana	02	20.8	24.0	18.2	-0.2	-0.1
1221	Clear Creek Amana	03	20.7	19.6	18.6	-0.1	-0.1
1233	Clear Lake	K	20.2	21.3	24.8	0.2	0.2
1233	Clear Lake	01	16.8	22.8	21.8	0.0	0.3
1233	Clear Lake	02	21.0	23.0	24.3	0.1	0.2
1233	Clear Lake	03	21.6	24.0	21.3	-0.1	0.0
1278	Clinton	K	24.8	20.2	21.5	0.1	-0.1
1278	Clinton	01	23.7	21.5	19.8	-0.1	-0.2
1278	Clinton	02	23.0	21.2	20.8	0.0	-0.1
1278	Clinton	03	24.9	20.1	22.5	0.1	-0.1
1332	Colfax-Mingo	K	24.3	18.3	17.3	-0.1	-0.3
1332	Colfax-Mingo	01	21.0	25.0	17.8	-0.3	-0.2
1332	Colfax-Mingo	02	20.3	20.0	17.7	-0.1	-0.1
1332	Colfax-Mingo	03	23.7	22.0	17.7	-0.2	-0.3
1337	College	K	24.3	20.1	19.2	0.0	-0.2
1337	College	01	23.6	20.8	18.1	-0.1	-0.2
1337	College	02	24.4	24.7	19.8	-0.2	-0.2
1337	College	03	21.8	25.8	21.4	-0.2	0.0
1350	Collins-Maxwell	K	17.0	17.5	16.5	-0.1	0.0
1350	Collins-Maxwell	01	14.5	12.5	17.5	0.4	0.2
1350	Collins-Maxwell	02	19.5	23.5	22.0	-0.1	0.1
1350	Collins-Maxwell	03	15.0	14.5	21.5	0.5	0.4
1359	Colo-NESCO School	K	16.0	7.4	10.3	0.4	-0.4

District Number	District Name	Grade	AVGCS 1998-1999	AVGCS 2013-2014	AVGCS 2014-2015	Percent Change from 2013-14 to 2014-15	Percent Change from 1998-99 to 2014-15
1359	Colo-NESCO School	01	21.5	8.0	16.5	1.1	-0.2
1359	Colo-NESCO School	02	14.0	8.0	17.0	1.1	0.2
1359	Colo-NESCO School	03	24.5	8.0	15.0	0.9	-0.4
1368	Columbus	K	22.7	19.3	21.0	0.1	-0.1
1368	Columbus	01	15.3	21.7	18.0	-0.2	0.2
1368	Columbus	02	20.0	18.3	21.0	0.1	0.1
1368	Columbus	03	17.2	23.5	26.0	0.1	0.5
1413	Coon Rapids-Bayard	K	18.0	19.5	18.5	-0.1	0.0
1413	Coon Rapids-Bayard	01	16.5	13.0	18.0	0.4	0.1
1413	Coon Rapids-Bayard	02	21.5	23.0	26.0	0.1	0.2
1413	Coon Rapids-Bayard	03	18.5	21.0	19.0	-0.1	0.0
1431	Corning	K	20.0	18.0	12.5	-0.3	-0.4
1431	Corning	01	20.5	22.5	17.0	-0.2	-0.2
1476	Council Bluffs	K	20.6	23.4	23.3	0.0	0.1
1476	Council Bluffs	01	21.5	22.4	21.0	-0.1	0.0
1476	Council Bluffs	02	23.8	22.2	23.1	0.0	0.0
1476	Council Bluffs	03	24.9	22.3	22.8	0.0	-0.1
1503	Creston	K	19.0	21.0	18.5	-0.1	0.0
1503	Creston	01	21.6	22.4	22.3	0.0	0.0
1503	Creston	02	21.2	21.4	21.2	0.0	0.0
1503	Creston	03	22.0	24.2	21.3	-0.1	0.0
1576	Dallas Center-Grimes	K	19.3	17.7	21.6	0.2	0.1
1576	Dallas Center-Grimes	01	19.7	21.0	20.1	0.0	0.0
1576	Dallas Center-Grimes	02	19.7	21.8	22.9	0.1	0.2
1576	Dallas Center-Grimes	03	24.4	24.3	23.3	0.0	0.0
1602	Danville	K	20.5	23.0	18.0	-0.2	-0.1

District Number	District Name	Grade	AVGCS 1998-1999	AVGCS 2013-2014	AVGCS 2014-2015	Percent Change from 2013-14 to 2014-15	Percent Change from 1998-99 to 2014-15
1602	Danville	01	25.0	22.5	22.5	0.0	-0.1
1602	Danville	02	22.0	18.0	23.0	0.3	0.0
1602	Danville	03	20.5	18.5	20.3	0.1	0.0
1611	Davenport	K	17.9	21.5	20.7	0.0	0.2
1611	Davenport	01	17.2	22.2	20.6	-0.1	0.2
1611	Davenport	02	18.8	20.2	20.8	0.0	0.1
1611	Davenport	03	18.9	20.7	20.5	0.0	0.1
1619	Davis County	K	18.8	22.0	18.0	-0.2	0.0
1619	Davis County	01	21.5	20.2	22.4	0.1	0.0
1619	Davis County	02	23.5	20.4	19.6	0.0	-0.2
1619	Davis County	03	21.3	26.0	19.0	-0.3	-0.1
1638	Decorah Community	K	20.8	18.3	19.7	0.1	-0.1
1638	Decorah Community	01	21.0	19.1	20.5	0.1	0.0
1638	Decorah Community	02	20.2	17.2	22.4	0.3	0.1
1638	Decorah Community	03	26.0	19.9	20.0	0.0	-0.2
1675	Delwood	K		22.0	15.0	-0.3	
1675	Delwood	01		23.0	21.0	-0.1	
1675	Delwood	02		14.5	20.0	0.4	
1675	Delwood	03		20.0	15.0	-0.3	
1701	Denison	K	19.8	21.6	22.4	0.0	0.1
1701	Denison	01	21.0	21.5	20.6	0.0	0.0
1701	Denison	02	20.8	19.4	22.7	0.2	0.1
1701	Denison	03	22.0	20.8	20.0	0.0	-0.1
1719	Denver	K	15.7	19.0	18.7	0.0	0.2
1719	Denver	01	18.3	19.7	17.3	-0.1	-0.1
1719	Denver	02	17.7	18.0	18.7	0.0	0.1

District Number	District Name	Grade	AVGCS 1998-1999	AVGCS 2013-2014	AVGCS 2014-2015	Percent Change from 2013-14 to 2014-15	Percent Change from 1998-99 to 2014-15
1719	Denver	03	19.7	22.0	19.0	-0.1	0.0
1737	Des Moines Independent	K	22.2	22.6	22.6	0.0	0.0
1737	Des Moines Independent	01	22.8	23.2	21.8	-0.1	0.0
1737	Des Moines Independent	02	22.5	22.4	22.5	0.0	0.0
1737	Des Moines Independent	03	24.8	21.8	22.4	0.0	-0.1
1791	Dike-New Hartford	K	14.3	20.0	22.7	0.1	0.6
1791	Dike-New Hartford	01	17.3	25.3	19.3	-0.2	0.1
1791	Dike-New Hartford	02	21.0	22.0	26.0	0.2	0.2
1791	Dike-New Hartford	03	19.0	21.0	20.7	0.0	0.1
1863	Dubuque	K	19.5	23.2	21.4	-0.1	0.1
1863	Dubuque	01	22.7	21.8	22.2	0.0	0.0
1863	Dubuque	02	21.7	21.9	22.3	0.0	0.0
1863	Dubuque	03	25.1	22.1	21.5	0.0	-0.1
1908	Dunkerton	K	16.0	19.0	10.0	-0.5	-0.4
1908	Dunkerton	01	17.0	16.5	18.0	0.1	0.1
1908	Dunkerton	02	17.0	14.5	19.0	0.3	0.1
1908	Dunkerton	03	20.0	13.0	16.0	0.2	-0.2
1926	Durant	K	18.5	19.0	22.0	0.2	0.2
1926	Durant	01	17.5	16.7	21.0	0.3	0.2
1926	Durant	02	19.5	22.5	17.0	-0.2	-0.1
1926	Durant	03	21.7	22.5	25.5	0.1	0.2
1944	Eagle Grove	K	20.0	21.3	18.7	-0.1	-0.1
1944	Eagle Grove	01	20.0	18.5	21.0	0.1	0.1
1944	Eagle Grove	02	19.8	18.3	24.7	0.4	0.2
1944	Eagle Grove	03	21.0	18.3	18.5	0.0	-0.1
1953	Earlham	K	22.0	19.0	23.0	0.2	0.0

District Number	District Name	Grade	AVGCS 1998-1999	AVGCS 2013-2014	AVGCS 2014-2015	Percent Change from 2013-14 to 2014-15	Percent Change from 1998-99 to 2014-15
1953	Earlham	01	19.0	17.0	18.7	0.1	0.0
1953	Earlham	02	22.0	23.0	15.5	-0.3	-0.3
1953	Earlham	03	20.0	18.5	22.0	0.2	0.1
1963	East Buchanan	K	21.0	22.0	17.0	-0.2	-0.2
1963	East Buchanan	01	17.0	23.5	21.5	-0.1	0.3
1963	East Buchanan	02	20.5	23.0	23.5	0.0	0.1
1963	East Buchanan	03	21.0	20.0	26.0	0.3	0.2
1968	East Marshall	K	21.7	20.3	18.3	-0.1	-0.2
1968	East Marshall	01	19.3	17.3	19.7	0.1	0.0
1968	East Marshall	02	24.3	20.0	24.0	0.2	0.0
1968	East Marshall	03	23.3	21.0	18.3	-0.1	-0.2
3978	East Mills	K	21.5	14.5	25.0	0.7	0.2
3978	East Mills	01	23.0	17.5	27.0	0.5	0.2
3978	East Mills	02	24.5	21.5	20.0	-0.1	-0.2
3978	East Mills	03	24.5	20.0	21.0	0.1	-0.1
6741	East Sac County	K	17.8	17.3	18.8	0.1	0.1
6741	East Sac County	01	19.5	18.3	19.7	0.1	0.0
6741	East Sac County	02	20.5	19.8	19.5	0.0	0.0
6741	East Sac County	03	20.5	20.7	20.0	0.0	0.0
1970	East Union	K	23.0	22.0	15.5	-0.3	-0.3
1970	East Union	01	21.5	18.5	21.5	0.2	0.0
1970	East Union	02	15.5	20.5	18.0	-0.1	0.2
1970	East Union	03	16.5	17.0	22.0	0.3	0.3
1972	Eastern Allamakee	K	32.0	12.5	17.0	0.4	-0.5
1972	Eastern Allamakee	01	17.0	23.0	27.0	0.2	0.6
1972	Eastern Allamakee	02	17.5	19.0	23.0	0.2	0.3

District Number	District Name	Grade	AVGCS 1998-1999	AVGCS 2013-2014	AVGCS 2014-2015	Percent Change from 2013-14 to 2014-15	Percent Change from 1998-99 to 2014-15
1972	Eastern Allamakee	03	21.5	21.0	22.0	0.0	0.0
1965	Easton Valley	K	16.0	15.0	18.5	0.2	0.2
1965	Easton Valley	01	16.0	15.0	15.0	0.0	-0.1
1965	Easton Valley	02	19.7	18.5	14.5	-0.2	-0.3
1965	Easton Valley	03	19.0	21.0	19.5	-0.1	0.0
0657	Eddyville-Blakesburg-Fremont	K	14.8	15.8	19.5	0.2	0.3
0657	Eddyville-Blakesburg-Fremont	01	17.3	14.0	16.5	0.2	0.0
0657	Eddyville-Blakesburg-Fremont	02	17.3	18.5	14.5	-0.2	-0.2
0657	Eddyville-Blakesburg-Fremont	03	21.3	14.3	19.8	0.4	-0.1
1989	Edgewood-Colesburg	K	19.3	18.0	15.7	-0.1	-0.2
1989	Edgewood-Colesburg	01	20.0	21.5	18.5	-0.1	-0.1
1989	Edgewood-Colesburg	02	21.0	18.5	20.0	0.1	0.0
1989	Edgewood-Colesburg	03	20.5	18.5	18.0	0.0	-0.1
2007	Eldora-New Providence	K	17.3	21.5	20.0	-0.1	0.2
2007	Eldora-New Providence	01	20.5	17.0	22.0	0.3	0.1
2007	Eldora-New Providence	02	20.5	15.7	18.0	0.1	-0.1
2007	Eldora-New Providence	03	22.5	20.5	24.5	0.2	0.1
2088	Emmetsburg	K	22.0	17.0	17.0	0.0	-0.2
2088	Emmetsburg	01	15.7	15.0	14.7	0.0	-0.1
2088	Emmetsburg	02	21.0	19.0	15.3	-0.2	-0.3
2088	Emmetsburg	03	22.0	21.0	21.7	0.0	0.0
2097	English Valleys	K	16.3	16.5	18.5	0.1	0.1
2097	English Valleys	01	14.3	13.5	12.5	-0.1	-0.1
2097	English Valleys	02	19.0	16.0	13.5	-0.2	-0.3

District Number	District Name	Grade	AVGCS 1998-1999	AVGCS 2013-2014	AVGCS 2014-2015	Percent Change from 2013-14 to 2014-15	Percent Change from 1998-99 to 2014-15
2097	English Valleys	03	17.7	17.0	16.5	0.0	-0.1
2113	Essex	K	19.0	19.0	16.0	-0.2	-0.2
2113	Essex	01	17.0	12.0	17.0	0.4	0.0
2113	Essex	02	25.0	18.0	12.0	-0.3	-0.5
2113	Essex	03	25.0	13.0	18.0	0.4	-0.3
2124	Estherville Lincoln	K	23.4	19.3	19.8	0.0	-0.2
2124	Estherville Lincoln	01	22.6	21.2	18.5	-0.1	-0.2
2124	Estherville Lincoln	02	21.2	21.2	21.8	0.0	0.0
2124	Estherville Lincoln	03	21.8	25.5	26.8	0.0	0.2
2151	Exira-Elk Horn-Kimballton	K	21.0	11.7	20.5	0.8	0.0
2151	Exira-Elk Horn-Kimballton	01	24.0	22.0	12.0	-0.5	-0.5
2151	Exira-Elk Horn-Kimballton	02	18.0	16.0	24.0	0.5	0.3
2151	Exira-Elk Horn-Kimballton	03	24.0	20.0	21.0	0.1	-0.1
2169	Fairfield	K	21.9	20.8	22.0	0.1	0.0
2169	Fairfield	01	22.6	20.2	21.7	0.1	0.0
2169	Fairfield	02	22.4	21.5	18.7	-0.1	-0.2
2169	Fairfield	03	21.4	21.0	20.8	0.0	0.0
2205	Farragut	K	21.0	15.0	9.0	-0.4	-0.6
2205	Farragut	01	17.0	12.0	8.0	-0.3	-0.5
2205	Farragut	02	23.0	13.0	9.0	-0.3	-0.6
2205	Farragut	03	16.5	14.0	12.0	-0.1	-0.3
2295	Forest City	K	20.7	16.3	20.0	0.2	0.0
2295	Forest City	01	20.7	19.3	23.0	0.2	0.1
2295	Forest City	02	21.0	20.3	19.7	0.0	-0.1
2295	Forest City	03	20.3	23.0	22.3	0.0	0.1
2313	Fort Dodge	K	22.0	23.4	24.5	0.0	0.1

District Number	District Name	Grade	AVGCS 1998-1999	AVGCS 2013-2014	AVGCS 2014-2015	Percent Change from 2013-14 to 2014-15	Percent Change from 1998-99 to 2014-15
2313	Fort Dodge	01	23.6	23.1	23.5	0.0	0.0
2313	Fort Dodge	02	21.1	21.8	22.7	0.0	0.1
2313	Fort Dodge	03	22.9	23.1	23.2	0.0	0.0
2322	Fort Madison	K	24.0	17.4	17.4	0.0	-0.3
2322	Fort Madison	01	22.1	19.9	20.4	0.0	-0.1
2322	Fort Madison	02	20.9	19.7	19.0	0.0	-0.1
2322	Fort Madison	03	24.3	20.4	20.3	0.0	-0.2
2369	Fremont-Mills	K	21.0	20.5	21.0	0.0	0.0
2369	Fremont-Mills	01	14.0	22.5	19.0	-0.2	0.4
2369	Fremont-Mills	02	18.5	17.0	19.5	0.1	0.1
2369	Fremont-Mills	03	20.0	26.0	19.0	-0.3	-0.1
2682	GMG	K	28.0	19.0	15.5	-0.2	-0.4
2682	GMG	01	15.5	19.0	17.5	-0.1	0.1
2682	GMG	02	12.0	18.0	20.0	0.1	0.7
2682	GMG	03	14.5	15.5	18.0	0.2	0.2
2376	Galva-Holstein	K	18.0	16.0	14.0	-0.1	-0.2
2376	Galva-Holstein	01	17.0	15.5	15.5	0.0	-0.1
2376	Galva-Holstein	02	12.3	19.0	16.5	-0.1	0.3
2376	Galva-Holstein	03	16.3	14.5	17.0	0.2	0.0
2403	Garner-Hayfield	K	15.7	22.7	18.7	-0.2	0.2
2403	Garner-Hayfield	01	18.3	22.7	23.0	0.0	0.3
2403	Garner-Hayfield	02	20.7	23.3	23.7	0.0	0.1
2403	Garner-Hayfield	03	19.7	22.3	23.0	0.0	0.2
2457	George-Little Rock	K	17.0	18.0	14.0	-0.2	-0.2
2457	George-Little Rock	01	15.0	13.0	22.0	0.7	0.5
2457	George-Little Rock	02	13.7	18.0	13.0	-0.3	-0.1

District Number	District Name	Grade	AVGCS 1998-1999	AVGCS 2013-2014	AVGCS 2014-2015	Percent Change from 2013-14 to 2014-15	Percent Change from 1998-99 to 2014-15
2457	George-Little Rock	03	14.3	18.0	19.0	0.1	0.3
2466	Gilbert	K	17.7	18.7	19.3	0.0	0.1
2466	Gilbert	01	19.5	19.2	21.4	0.1	0.1
2466	Gilbert	02	21.0	19.8	19.2	0.0	-0.1
2466	Gilbert	03	23.3	22.2	24.4	0.1	0.0
2493	Gilmore City-Bradgate	K	10.0	7.0	8.0	0.1	-0.2
2502	Gladbrook-Reinbeck	K	15.5	17.0	12.7	-0.3	-0.2
2502	Gladbrook-Reinbeck	01	18.7	13.3	15.7	0.2	-0.2
2502	Gladbrook-Reinbeck	02	18.0	17.0	21.0	0.2	0.2
2502	Gladbrook-Reinbeck	03	17.3	22.5	17.5	-0.2	0.0
2511	Glenwood	K	26.2	19.2	19.4	0.0	-0.3
2511	Glenwood	01	23.2	19.1	18.9	0.0	-0.2
2511	Glenwood	02	24.3	21.2	21.5	0.0	-0.1
2511	Glenwood	03	25.2	20.9	18.9	-0.1	-0.3
2520	Glidden-Ralston	K	17.0	15.0	12.0	-0.2	-0.3
2520	Glidden-Ralston	01	11.0	12.0	13.0	0.1	0.2
2520	Glidden-Ralston	02	18.5	22.0	11.5	-0.5	-0.4
2520	Glidden-Ralston	03	19.5	19.0	21.0	0.1	0.1
2556	Graettinger-Terril	K	12.5	17.0	15.0	-0.1	0.2
2556	Graettinger-Terril	01	17.0	12.5	15.5	0.2	-0.1
2556	Graettinger-Terril	02	15.7	13.5	12.5	-0.1	-0.2
2556	Graettinger-Terril	03	18.0	14.0	14.0	0.0	-0.2
3195	Greene County	K	24.0	16.8	15.6	-0.1	-0.4
3195	Greene County	01	18.8	18.0	22.0	0.2	0.2
3195	Greene County	02	20.2	19.4	22.8	0.2	0.1
3195	Greene County	03	19.0	17.4	24.0	0.4	0.3

District Number	District Name	Grade	AVGCS 1998-1999	AVGCS 2013-2014	AVGCS 2014-2015	Percent Change from 2013-14 to 2014-15	Percent Change from 1998-99 to 2014-15
2709	Grinnell-Newburg	K	20.7	17.8	20.0	0.1	0.0
2709	Grinnell-Newburg	01	19.0	15.0	21.5	0.4	0.1
2709	Grinnell-Newburg	02	20.0	18.0	17.3	0.0	-0.1
2709	Grinnell-Newburg	03	24.1	16.3	20.0	0.2	-0.2
2718	Griswold	K	19.7	19.0	14.5	-0.2	-0.3
2718	Griswold	01		21.5	17.5	-0.2	
2718	Griswold	02		18.0	22.0	0.2	
2718	Griswold	03	18.7	14.5	17.5	0.2	-0.1
2727	Grundy Center	K	21.5	16.7	20.7	0.2	0.0
2727	Grundy Center	01	23.0	17.7	18.3	0.0	-0.2
2727	Grundy Center	02	24.5	19.3	17.7	-0.1	-0.3
2727	Grundy Center	03	21.5	17.0	19.7	0.2	-0.1
2754	Guthrie Center	K	22.0	16.5	22.0	0.3	0.0
2754	Guthrie Center	01	24.5	19.5	15.5	-0.2	-0.4
2754	Guthrie Center	02	21.5	18.5	20.0	0.1	-0.1
2754	Guthrie Center	03	21.0	20.0	20.0	0.0	0.0
2766	H-L-V	K	18.0	28.0	27.0	0.0	0.5
2766	H-L-V	01	22.0	22.0	23.0	0.0	0.0
2766	H-L-V	02	19.0	28.0	24.0	-0.1	0.3
2766	H-L-V	03	21.0	25.0	28.0	0.1	0.3
2772	Hamburg	K	21.0	22.0	22.0	0.0	0.0
2772	Hamburg	01	15.0	19.0	22.0	0.2	0.5
2772	Hamburg	02	22.0	18.0	18.0	0.0	-0.2
2772	Hamburg	03	14.5	22.0	17.0	-0.2	0.2
2781	Hampton-Dumont	K	18.4	19.0	18.8	0.0	0.0
2781	Hampton-Dumont	01	20.5	21.2	18.2	-0.1	-0.1

District Number	District Name	Grade	AVGCS 1998-1999	AVGCS 2013-2014	AVGCS 2014-2015	Percent Change from 2013-14 to 2014-15	Percent Change from 1998-99 to 2014-15
2781	Hampton-Dumont	02	20.6	21.8	21.2	0.0	0.0
2781	Hampton-Dumont	03	21.8	25.3	21.8	-0.1	0.0
2826	Harlan	K	19.6	18.4	18.0	0.0	-0.1
2826	Harlan	01	18.8	17.3	20.6	0.2	0.1
2826	Harlan	02	24.0	19.2	19.2	0.0	-0.2
2826	Harlan	03	26.8	21.2	18.8	-0.1	-0.3
2834	Harmony	K	18.0	24.0	17.0	-0.3	-0.1
2834	Harmony	01	16.0	21.0	21.0	0.0	0.3
2834	Harmony	02	17.0	28.0	18.0	-0.4	0.1
2834	Harmony	03	22.0	26.0	30.0	0.2	0.4
2846	Harris-Lake Park	K	19.0	26.0	27.0	0.0	0.4
2846	Harris-Lake Park	01	23.0	14.0	21.0	0.5	-0.1
2846	Harris-Lake Park	02	19.0	19.0	17.0	-0.1	-0.1
2846	Harris-Lake Park	03	16.5	14.0	16.0	0.1	0.0
2862	Hartley-Melvin-Sanborn	K	15.0	16.8	18.7	0.1	0.2
2862	Hartley-Melvin-Sanborn	01	17.3	15.3	21.0	0.4	0.2
2862	Hartley-Melvin-Sanborn	02	15.5	16.0	17.7	0.1	0.1
2862	Hartley-Melvin-Sanborn	03	16.8	18.7	19.3	0.0	0.2
2977	Highland	K	20.0	23.0	14.3	-0.4	-0.3
2977	Highland	01	22.0	16.3	23.0	0.4	0.0
2977	Highland	02	18.3	18.7	16.7	-0.1	-0.1
2977	Highland	03	21.5	18.3	19.0	0.0	-0.1
2988	Hinton	K	23.0	18.8	18.5	0.0	-0.2
2988	Hinton	01	16.0	23.3	16.3	-0.3	0.0
2988	Hinton	02	23.5	16.7	21.7	0.3	-0.1
2988	Hinton	03	25.5	18.7	24.5	0.3	0.0

District Number	District Name	Grade	AVGCS 1998-1999	AVGCS 2013-2014	AVGCS 2014-2015	Percent Change from 2013-14 to 2014-15	Percent Change from 1998-99 to 2014-15
3029	Howard-Winneshiek	K	16.2	15.3	16.9	0.1	0.0
3029	Howard-Winneshiek	01	16.2	18.0	17.3	0.0	0.1
3029	Howard-Winneshiek	02	20.3	14.8	21.2	0.4	0.0
3029	Howard-Winneshiek	03	21.5	19.8	18.0	-0.1	-0.2
3033	Hubbard-Radcliffe	K	18.0	15.0	10.0	-0.3	-0.4
3033	Hubbard-Radcliffe	01	17.0	20.0	22.0	0.1	0.3
3033	Hubbard-Radcliffe	02	20.5	23.0	19.0	-0.2	-0.1
3033	Hubbard-Radcliffe	03	15.5	25.0	17.0	-0.3	0.1
3042	Hudson	K	17.8	20.3	16.7	-0.2	-0.1
3042	Hudson	01	20.5	20.7	20.0	0.0	0.0
3042	Hudson	02	24.0	20.7	21.0	0.0	-0.1
3042	Hudson	03	24.3	24.0	21.3	-0.1	-0.1
3060	Humboldt	K	25.8	21.5	21.5	0.0	-0.2
3060	Humboldt	01	20.0	21.0	22.8	0.1	0.1
3060	Humboldt	02	21.3	23.5	21.8	-0.1	0.0
3060	Humboldt	03	25.8	21.6	24.5	0.1	-0.1
3168	IKM-Manning	K	14.4	12.3	19.7	0.6	0.4
3168	IKM-Manning	01	16.5	21.0	18.0	-0.1	0.1
3168	IKM-Manning	02	19.5	23.0	20.0	-0.1	0.0
3168	IKM-Manning	03	19.8	22.5	23.5	0.0	0.2
3105	Independence	K	16.8	20.8	18.8	-0.1	0.1
3105	Independence	01	19.8	18.4	20.0	0.1	0.0
3105	Independence	02	22.4	20.0	19.0	-0.1	-0.2
3105	Independence	03	23.3	23.5	18.6	-0.2	-0.2
3114	Indianola	K	20.0	19.6	23.2	0.2	0.2
3114	Indianola	01	21.3	22.1	22.1	0.0	0.0

District Number	District Name	Grade	AVGCS 1998-1999	AVGCS 2013-2014	AVGCS 2014-2015	Percent Change from 2013-14 to 2014-15	Percent Change from 1998-99 to 2014-15
3114	Indianola	02	21.1	22.2	23.7	0.1	0.1
3114	Indianola	03	21.2	23.4	23.0	0.0	0.1
3119	Interstate 35	K	18.7	21.7	16.7	-0.2	-0.1
3119	Interstate 35	01	17.7	16.8	20.3	0.2	0.1
3119	Interstate 35	02	21.0	21.7	21.3	0.0	0.0
3119	Interstate 35	03	19.3	19.0	23.0	0.2	0.2
3141	Iowa City	K	17.5	20.4	19.4	0.0	0.1
3141	Iowa City	01	18.3	20.9	20.4	0.0	0.1
3141	Iowa City	02	21.1	20.0	20.6	0.0	0.0
3141	Iowa City	03	23.5	21.5	23.2	0.1	0.0
3150	Iowa Falls	K	16.8	16.2	18.8	0.2	0.1
3150	Iowa Falls	01	21.5	17.6	19.5	0.1	-0.1
3150	Iowa Falls	02	20.5	17.8	17.0	0.0	-0.2
3150	Iowa Falls	03	21.3	17.8	22.5	0.3	0.1
3154	Iowa Valley	K	17.0	25.5	18.5	-0.3	0.1
3154	Iowa Valley	01	18.7	20.5	21.5	0.0	0.1
3154	Iowa Valley	02	18.7	19.5	19.0	0.0	0.0
3154	Iowa Valley	03	17.3	18.0	18.5	0.0	0.1
3186	Janesville Consolidated	K	26.0	24.0	16.5	-0.3	-0.4
3186	Janesville Consolidated	01	18.0	29.0	22.0	-0.2	0.2
3186	Janesville Consolidated	02	20.0	24.0	30.0	0.3	0.5
3186	Janesville Consolidated	03	20.0	27.0	22.0	-0.2	0.1
3204	Jesup	K	20.3	16.8	22.0	0.3	0.1
3204	Jesup	01	17.3	17.2	20.3	0.2	0.2
3204	Jesup	02	25.5	15.6	18.8	0.2	-0.3
3204	Jesup	03	25.0	17.5	17.3	0.0	-0.3

District Number	District Name	Grade	AVGCS 1998-1999	AVGCS 2013-2014	AVGCS 2014-2015	Percent Change from 2013-14 to 2014-15	Percent Change from 1998-99 to 2014-15
3231	Johnston	K	23.5	21.7	22.7	0.0	0.0
3231	Johnston	01	23.4	22.5	21.7	0.0	-0.1
3231	Johnston	02	22.8	22.6	24.1	0.1	0.1
3231	Johnston	03	23.6	22.3	24.8	0.1	0.1
3312	Keokuk	K	17.1	20.9	21.3	0.0	0.2
3312	Keokuk	01	23.3	19.9	20.9	0.0	-0.1
3312	Keokuk	02	22.3	18.9	23.0	0.2	0.0
3312	Keokuk	03	21.4	19.7	23.0	0.2	0.1
3330	Keota	K	19.0	12.0	14.0	0.2	-0.3
3330	Keota	01	16.0	18.5	12.5	-0.3	-0.2
3330	Keota	02	18.0	15.0	17.5	0.2	0.0
3330	Keota	03	15.5	22.0	15.5	-0.3	0.0
3348	Kingsley-Pierson	K	13.5	15.0	14.5	0.0	0.1
3348	Kingsley-Pierson	01	19.5	14.5	16.0	0.1	-0.2
3348	Kingsley-Pierson	02	20.5	13.5	15.0	0.1	-0.3
3348	Kingsley-Pierson	03	17.5	21.0	14.5	-0.3	-0.2
3375	Knoxville	K	23.4	21.3	23.2	0.1	0.0
3375	Knoxville	01	21.9	22.2	21.5	0.0	0.0
3375	Knoxville	02	22.1	21.7	22.8	0.1	0.0
3375	Knoxville	03	21.7	24.6	26.0	0.1	0.2
3420	Lake Mills	K	26.0	16.8	17.0	0.0	-0.3
3420	Lake Mills	01	15.0	19.7	16.7	-0.2	0.1
3420	Lake Mills	02	16.7	17.3	18.3	0.1	0.1
3420	Lake Mills	03	20.3	23.5	19.3	-0.2	0.0
3465	Lamoni	K	18.0	13.5	9.5	-0.3	-0.5
3465	Lamoni	01	13.0	22.0	12.0	-0.5	-0.1

District Number	District Name	Grade	AVGCS 1998-1999	AVGCS 2013-2014	AVGCS 2014-2015	Percent Change from 2013-14 to 2014-15	Percent Change from 1998-99 to 2014-15
3465	Lamoni	02	23.0	15.0	21.0	0.4	-0.1
3465	Lamoni	03	26.0	16.5	12.5	-0.2	-0.5
3537	Laurens-Marathon	K	19.5	15.0	16.0	0.1	-0.2
3537	Laurens-Marathon	01	20.5	24.0	18.0	-0.3	-0.1
3537	Laurens-Marathon	02	15.5	20.0	25.0	0.3	0.6
3537	Laurens-Marathon	03	23.0	19.0	21.0	0.1	-0.1
3555	Lawton-Bronson	K	20.0	20.0	17.3	-0.1	-0.1
3555	Lawton-Bronson	01	25.0	19.3	18.5	0.0	-0.3
3555	Lawton-Bronson	02	16.0	21.5	19.3	-0.1	0.2
3555	Lawton-Bronson	03	27.0	19.5	22.0	0.1	-0.2
3600	Le Mars	K	21.1	22.0	23.0	0.0	0.1
3600	Le Mars	01	21.0	22.3	22.9	0.0	0.1
3600	Le Mars	02	21.6	20.1	22.6	0.1	0.0
3600	Le Mars	03	20.9	21.2	21.9	0.0	0.0
3609	Lenox	K	13.5	16.7	11.0	-0.3	-0.2
3609	Lenox	01	15.5	15.5	23.0	0.5	0.5
3609	Lenox	02	21.0	14.5	16.5	0.1	-0.2
3609	Lenox	03	19.5	18.0	15.5	-0.1	-0.2
3645	Lewis Central	01	20.1	22.3	22.4	0.0	0.1
3645	Lewis Central	02	21.5	26.7	23.9	-0.1	0.1
3645	Lewis Central	03	23.2	22.8	23.4	0.0	0.0
3715	Linn-Mar	K	23.3	20.0	20.9	0.0	-0.1
3715	Linn-Mar	01	23.2	23.2	22.8	0.0	0.0
3715	Linn-Mar	02	23.5	23.0	23.0	0.0	0.0
3715	Linn-Mar	03	25.6	22.8	23.9	0.0	-0.1
3744	Lisbon	K	22.0	16.3	15.5	0.0	-0.3

District Number	District Name	Grade	AVGCS 1998-1999	AVGCS 2013-2014	AVGCS 2014-2015	Percent Change from 2013-14 to 2014-15	Percent Change from 1998-99 to 2014-15
3744	Lisbon	01	19.0	23.5	19.0	-0.2	0.0
3744	Lisbon	02	24.5	19.3	17.3	-0.1	-0.3
3744	Lisbon	03	25.5	17.7	18.7	0.1	-0.3
3798	Logan-Magnolia	K	16.3	18.7	17.7	-0.1	0.1
3798	Logan-Magnolia	01	18.5	14.0	16.7	0.2	-0.1
3798	Logan-Magnolia	02	22.7	22.0	24.5	0.1	0.1
3798	Logan-Magnolia	03	18.0	23.0	21.5	-0.1	0.2
3816	Lone Tree	K	22.0	19.0	23.0	0.2	0.0
3816	Lone Tree	01	21.5	18.5	19.5	0.1	-0.1
3816	Lone Tree	02	20.5	16.0	21.0	0.3	0.0
3816	Lone Tree	03	16.0	18.0	15.0	-0.2	-0.1
3841	Louisa-Muscatine	K	17.0	19.7	17.7	-0.1	0.0
3841	Louisa-Muscatine	01	19.3	17.3	21.7	0.3	0.1
3841	Louisa-Muscatine	02	20.5	19.7	18.7	-0.1	-0.1
3841	Louisa-Muscatine	03	22.0	20.0	17.7	-0.1	-0.2
3897	LuVerne	K		9.0	8.0	-0.1	
3897	LuVerne	01		12.0	9.0	-0.3	
3897	LuVerne	02		7.0	10.0	0.4	
3897	LuVerne	03		23.0	6.0	-0.7	
3906	Lynnville-Sully	K	20.0	19.0	15.0	-0.2	-0.3
3906	Lynnville-Sully	01	17.5	13.0	16.5	0.3	-0.1
3906	Lynnville-Sully	02	19.5	15.0	15.5	0.0	-0.2
3906	Lynnville-Sully	03	17.0	23.5	16.5	-0.3	0.0
4419	MFL MarMac	K	16.0	21.3	19.0	-0.1	0.2
4419	MFL MarMac	01	18.0	21.0	22.3	0.1	0.2
4419	MFL MarMac	02	23.3	22.7	19.0	-0.2	-0.2

District Number	District Name	Grade	AVGCS 1998-1999	AVGCS 2013-2014	AVGCS 2014-2015	Percent Change from 2013-14 to 2014-15	Percent Change from 1998-99 to 2014-15
4419	MFL MarMac	03	17.0	18.3	21.0	0.1	0.2
4149	MOC-Floyd Valley	K	18.8	19.5	19.7	0.0	0.0
4149	MOC-Floyd Valley	01	17.0	15.0	20.0	0.3	0.2
4149	MOC-Floyd Valley	02	19.4	23.4	18.2	-0.2	-0.1
4149	MOC-Floyd Valley	03	18.6	21.4	22.8	0.1	0.2
3942	Madrid	K	26.5	14.0	14.3	0.0	-0.5
3942	Madrid	01	16.0	14.3	15.7	0.1	0.0
3942	Madrid	02	20.5	19.3	14.0	-0.3	-0.3
3942	Madrid	03	17.5	20.0	22.0	0.1	0.3
4023	Manson Northwest Webster	K	15.0	22.0	14.8	-0.3	0.0
4023	Manson Northwest Webster	01	21.3	21.0	21.0	0.0	0.0
4023	Manson Northwest Webster	02	18.0	24.0	20.7	-0.1	0.1
4023	Manson Northwest Webster	03	16.0	23.5	25.5	0.1	0.6
4033	Maple Valley-Anthon Oto	K	20.3	17.3	18.3	0.1	-0.1
4033	Maple Valley-Anthon Oto	01	23.0	13.3	17.5	0.3	-0.2
4033	Maple Valley-Anthon Oto	02	17.3	18.0	17.0	-0.1	0.0
4033	Maple Valley-Anthon Oto	03	21.0	17.7	18.0	0.0	-0.1
4041	Maquoketa	K	18.8	19.5	20.0	0.0	0.1
4041	Maquoketa	01	24.2	19.3	20.8	0.1	-0.1
4041	Maquoketa	02	18.0	21.0	23.8	0.1	0.3
4041	Maquoketa	03	19.6	20.3	18.0	-0.1	-0.1
4043	Maquoketa Valley	K	16.0	18.3	18.3	0.0	0.1
4043	Maquoketa Valley	01	22.0	15.3	18.7	0.2	-0.2
4043	Maquoketa Valley	02	20.0	16.7	24.5	0.5	0.2
4043	Maquoketa Valley	03	23.7	22.5	24.0	0.1	0.0
4068	Marcus-Meriden-Cleghorn	K	18.0	17.5	12.7	-0.3	-0.3

District Number	District Name	Grade	AVGCS 1998-1999	AVGCS 2013-2014	AVGCS 2014-2015	Percent Change from 2013-14 to 2014-15	Percent Change from 1998-99 to 2014-15
4068	Marcus-Meriden-Cleghorn	01	16.0	23.0	16.5	-0.3	0.0
4068	Marcus-Meriden-Cleghorn	02	16.0	12.5	28.0	1.2	0.8
4068	Marcus-Meriden-Cleghorn	03	21.5	15.5	28.0	0.8	0.3
4086	Marion Independent	K	20.2	22.3	22.9	0.0	0.1
4086	Marion Independent	01	23.0	21.7	21.7	0.0	-0.1
4086	Marion Independent	02	21.8	21.0	22.0	0.0	0.0
4086	Marion Independent	03	22.3	22.7	26.0	0.1	0.2
4104	Marshalltown	K	24.5	22.3	23.2	0.0	-0.1
4104	Marshalltown	01	22.5	21.9	22.8	0.0	0.0
4104	Marshalltown	02	21.8	21.7	22.0	0.0	0.0
4104	Marshalltown	03	22.5	20.6	22.1	0.1	0.0
4122	Martensdale-St Marys	K	15.0	19.0	16.5	-0.1	0.1
4122	Martensdale-St Marys	01	17.0	16.5	18.0	0.1	0.1
4122	Martensdale-St Marys	02	17.0	23.0	16.5	-0.3	0.0
4122	Martensdale-St Marys	03	19.5	17.0	24.0	0.4	0.2
4131	Mason City	K	21.7	23.8	25.5	0.1	0.2
4131	Mason City	01	20.3	23.5	23.7	0.0	0.2
4131	Mason City	02	21.7	22.2	24.2	0.1	0.1
4131	Mason City	03	23.9	22.7	23.4	0.0	0.0
4203	Mediapolis	K	22.0	20.3	21.0	0.0	0.0
4203	Mediapolis	01	18.0	17.3	22.0	0.3	0.2
4203	Mediapolis	02	18.7	19.7	19.0	0.0	0.0
4203	Mediapolis	03	20.0	19.0	21.3	0.1	0.1
4212	Melcher-Dallas	K	14.0	16.0	15.0	-0.1	0.1
4212	Melcher-Dallas	01	18.0	18.5	19.0	0.0	0.1
4212	Melcher-Dallas	02	23.0	18.0	17.0	-0.1	-0.3

District Number	District Name	Grade	AVGCS 1998-1999	AVGCS 2013-2014	AVGCS 2014-2015	Percent Change from 2013-14 to 2014-15	Percent Change from 1998-99 to 2014-15
4212	Melcher-Dallas	03	17.5	15.5	19.0	0.2	0.1
4271	Mid-Prairie	K	17.6	22.6	22.2	0.0	0.3
4271	Mid-Prairie	01	17.8	19.0	22.0	0.2	0.2
4271	Mid-Prairie	02	18.6	19.4	20.4	0.1	0.1
4271	Mid-Prairie	03	19.6	21.2	20.4	0.0	0.0
4269	Midland	K	15.0	15.5	16.5	0.1	0.1
4269	Midland	01	16.0	24.5	15.0	-0.4	-0.1
4269	Midland	02	15.7	18.5	21.5	0.2	0.4
4269	Midland	03	17.3	20.0	16.0	-0.2	-0.1
4356	Missouri Valley	K	21.3	17.3	19.3	0.1	-0.1
4356	Missouri Valley	01	23.3	23.0	17.7	-0.2	-0.2
4356	Missouri Valley	02	20.0	19.7	22.0	0.1	0.1
4356	Missouri Valley	03	23.0	19.7	18.0	-0.1	-0.2
4437	Montezuma	K	15.5	22.0	17.5	-0.2	0.1
4437	Montezuma	01	23.0	23.0	19.0	-0.2	-0.2
4437	Montezuma	02	22.0	19.5	21.5	0.1	0.0
4437	Montezuma	03	21.5	18.0	17.0	-0.1	-0.2
4446	Monticello	K	18.0	18.3	22.0	0.2	0.2
4446	Monticello	01	17.3	17.3	21.5	0.2	0.2
4446	Monticello	02	25.3	23.3	21.7	-0.1	-0.1
4446	Monticello	03	25.0	21.0	25.3	0.2	0.0
4491	Moravia	K	22.0	17.0	15.5	-0.1	-0.3
4491	Moravia	01	16.0	25.0	13.5	-0.5	-0.2
4491	Moravia	02	16.0	14.0	13.0	-0.1	-0.2
4491	Moravia	03	16.0	15.5	16.5	0.1	0.0
4505	Mormon Trail	K	17.0	13.0	16.0	0.2	-0.1

District Number	District Name	Grade	AVGCS 1998-1999	AVGCS 2013-2014	AVGCS 2014-2015	Percent Change from 2013-14 to 2014-15	Percent Change from 1998-99 to 2014-15
4505	Mormon Trail	01	13.5	18.0	15.0	-0.2	0.1
4505	Mormon Trail	02	20.0	19.0	16.0	-0.2	-0.2
4505	Mormon Trail	03	20.0	20.0	18.0	-0.1	-0.1
4509	Morning Sun	K	17.0	19.0	17.0	-0.1	0.0
4509	Morning Sun	01	19.0	19.0	20.0	0.1	0.1
4509	Morning Sun	02	18.0	13.0	18.0	0.4	0.0
4509	Morning Sun	03	23.0	20.0	12.0	-0.4	-0.5
4518	Moulton-Udell	K	22.0	17.0	13.0	-0.2	-0.4
4518	Moulton-Udell	01	23.0	21.0	19.0	-0.1	-0.2
4518	Moulton-Udell	02	24.0	26.0	17.0	-0.3	-0.3
4518	Moulton-Udell	03	23.0	13.0	21.0	0.6	-0.1
4527	Mount Ayr	K	18.7	14.3	15.0	0.0	-0.2
4527	Mount Ayr	01	18.5	17.3	16.7	0.0	-0.1
4527	Mount Ayr	02	20.5	22.0	18.7	-0.2	-0.1
4527	Mount Ayr	03	15.0	18.3	21.0	0.1	0.4
4536	Mount Pleasant	K	22.3	21.1	17.1	-0.2	-0.2
4536	Mount Pleasant	01	20.9	20.9	21.7	0.0	0.0
4536	Mount Pleasant	02	22.5	18.1	20.7	0.1	-0.1
4536	Mount Pleasant	03	18.6	21.3	17.9	-0.2	0.0
4554	Mount Vernon	K	16.3	21.6	18.6	-0.1	0.1
4554	Mount Vernon	01	21.8	18.6	20.6	0.1	-0.1
4554	Mount Vernon	02	21.5	19.8	18.2	-0.1	-0.2
4554	Mount Vernon	03	18.5	19.6	18.0	-0.1	0.0
4572	Murray	K	23.0	12.5	11.5	-0.1	-0.5
4572	Murray	01	23.0	25.0	18.0	-0.3	-0.2
4572	Murray	02	22.0	22.0	25.0	0.1	0.1

District Number	District Name	Grade	AVGCS 1998-1999	AVGCS 2013-2014	AVGCS 2014-2015	Percent Change from 2013-14 to 2014-15	Percent Change from 1998-99 to 2014-15
4572	Murray	03	30.0	25.0	22.0	-0.1	-0.3
4581	Muscatine	K	19.9	23.0	20.7	-0.1	0.0
4581	Muscatine	01	19.7	22.1	22.1	0.0	0.1
4581	Muscatine	02	23.2	22.2	21.9	0.0	-0.1
4581	Muscatine	03	20.7	22.8	21.9	0.0	0.1
4599	Nashua-Plainfield	K	19.0	17.3	17.5	0.0	-0.1
4599	Nashua-Plainfield	01	17.7	18.3	17.7	0.0	0.0
4599	Nashua-Plainfield	02	20.3	15.0	17.7	0.2	-0.1
4599	Nashua-Plainfield	03	22.3	20.0	22.5	0.1	0.0
4617	Nevada	K	17.3	21.0	19.4	-0.1	0.1
4617	Nevada	01	19.0	22.3	18.8	-0.2	0.0
4617	Nevada	02	18.4	24.0	23.5	0.0	0.3
4617	Nevada	03	25.0	22.3	24.0	0.1	0.0
4662	New Hampton	K	17.5	17.2	23.3	0.4	0.3
4662	New Hampton	01	20.8	21.0	19.7	-0.1	-0.1
4662	New Hampton	02	22.8	18.2	22.0	0.2	0.0
4662	New Hampton	03	22.8	19.2	18.0	-0.1	-0.2
4689	New London	K	16.7	17.5	22.0	0.3	0.3
4689	New London	01	19.0	20.0	16.0	-0.2	-0.2
4689	New London	02	17.5	16.5	18.0	0.1	0.0
4689	New London	03	24.5	16.3	15.5	-0.1	-0.4
4644	Newell-Fonda	K	19.0	14.7	11.0	-0.3	-0.4
4644	Newell-Fonda	01	14.5	22.0	16.0	-0.3	0.1
4644	Newell-Fonda	02	18.0	16.0	20.5	0.3	0.1
4644	Newell-Fonda	03	19.5	23.0	15.5	-0.3	-0.2
4725	Newton	K	21.4	20.0	15.8	-0.2	-0.3

District Number	District Name	Grade	AVGCS 1998-1999	AVGCS 2013-2014	AVGCS 2014-2015	Percent Change from 2013-14 to 2014-15	Percent Change from 1998-99 to 2014-15
4725	Newton	01	22.5	18.8	17.2	-0.1	-0.2
4725	Newton	02	24.0	21.8	20.2	-0.1	-0.2
4725	Newton	03	22.7	21.0	20.3	0.0	-0.1
2673	Nodaway Valley	K	18.7	25.0	23.0	-0.1	0.2
2673	Nodaway Valley	01	23.3	24.5	16.7	-0.3	-0.3
2673	Nodaway Valley	02	23.3	21.0	20.0	0.0	-0.1
2673	Nodaway Valley	03	21.3	19.5	24.5	0.3	0.2
0153	North Butler	K	22.5	16.5	25.0	0.5	0.1
0153	North Butler	01	15.5	18.7	17.3	-0.1	0.1
0153	North Butler	02	15.0	27.5	26.0	-0.1	0.7
0153	North Butler	03	15.0	20.0	27.0	0.4	0.8
3691	North Cedar	K	14.5	15.7	17.0	0.1	0.2
3691	North Cedar	01	20.5	18.0	16.0	-0.1	-0.2
3691	North Cedar	02	25.0	14.0	21.5	0.5	-0.1
3691	North Cedar	03	23.7	17.7	14.3	-0.2	-0.4
4774	North Fayette	K	22.8	17.3	21.0	0.2	-0.1
4774	North Fayette	01	21.0	13.2	20.0	0.5	0.0
4774	North Fayette	02	20.3	10.4	20.0	0.9	0.0
4774	North Fayette	03	20.4	20.7	24.0	0.2	0.2
0873	North Iowa	K		13.3	18.0	0.4	
0873	North Iowa	01		13.0	15.5	0.2	
0873	North Iowa	02		16.0	15.5	0.0	
0873	North Iowa	03		26.0	16.5	-0.4	
4778	North Kossuth	K	13.0	13.0	18.0	0.4	0.4
4778	North Kossuth	01	13.0	18.0	14.0	-0.2	0.1
4778	North Kossuth	02	24.0	23.0	19.0	-0.2	-0.2

District Number	District Name	Grade	AVGCS 1998-1999	AVGCS 2013-2014	AVGCS 2014-2015	Percent Change from 2013-14 to 2014-15	Percent Change from 1998-99 to 2014-15
4778	North Kossuth	03	18.0	20.0	23.0	0.2	0.3
4777	North Linn	K	16.7	18.7	15.0	-0.2	-0.1
4777	North Linn	01	17.3	18.0	23.0	0.3	0.3
4777	North Linn	02	17.8	22.0	20.0	-0.1	0.1
4777	North Linn	03	20.0	23.0	21.0	-0.1	0.1
4776	North Mahaska	K	18.0	21.0	17.0	-0.2	-0.1
4776	North Mahaska	01	20.5	23.0	19.5	-0.2	0.0
4776	North Mahaska	02	19.5	26.0	23.0	-0.1	0.2
4776	North Mahaska	03	21.0	24.0	28.0	0.2	0.3
4779	North Polk	K	14.6	20.8	19.5	-0.1	0.3
4779	North Polk	01	19.3	24.4	21.8	-0.1	0.1
4779	North Polk	02	15.3	23.6	22.0	-0.1	0.4
4779	North Polk	03	18.3	23.0	24.0	0.0	0.3
4784	North Scott	K	21.8	17.8	19.0	0.1	-0.1
4784	North Scott	01	21.6	18.6	18.2	0.0	-0.2
4784	North Scott	02	21.9	20.0	20.8	0.0	0.0
4784	North Scott	03	23.9	21.5	20.8	0.0	-0.1
4785	North Tama County	K	35.0	23.0	16.0	-0.3	-0.5
4785	North Tama County	01	21.5	18.0	25.0	0.4	0.2
4785	North Tama County	02	13.5	19.5	18.0	-0.1	0.3
4785	North Tama County	03	15.5	18.0	20.0	0.1	0.3
0333	North Union	K	24.0	15.5	19.0	0.2	-0.2
0333	North Union	01	18.5	18.0	13.5	-0.3	-0.3
0333	North Union	02	22.0	17.5	17.5	0.0	-0.2
0333	North Union	03	15.0	22.0	18.0	-0.2	0.2
4787	North Winneshiek	K		16.0	12.0	-0.3	

District Number	District Name	Grade	AVGCS 1998-1999	AVGCS 2013-2014	AVGCS 2014-2015	Percent Change from 2013-14 to 2014-15	Percent Change from 1998-99 to 2014-15
4787	North Winneshiek	01		11.0	18.0	0.6	
4787	North Winneshiek	02		21.0	10.0	-0.5	
4787	North Winneshiek	03		13.0	19.0	0.5	
4773	Northeast	K	13.5	15.5	15.8	0.0	0.2
4773	Northeast	01	18.8	16.0	19.0	0.2	0.0
4773	Northeast	02	17.7	18.7	21.5	0.2	0.2
4773	Northeast	03	20.0	24.0	20.7	-0.1	0.0
4775	Northeast Hamilton	K	22.0	16.0	14.0	-0.1	-0.4
4775	Northeast Hamilton	01	23.0	15.0	16.0	0.1	-0.3
4775	Northeast Hamilton	02	18.0	20.0	16.0	-0.2	-0.1
4775	Northeast Hamilton	03	26.0	11.0	18.0	0.6	-0.3
4788	Northwood-Kensett	K	17.0	22.0	19.0	-0.1	0.1
4788	Northwood-Kensett	01	21.0	22.5	22.0	0.0	0.0
4788	Northwood-Kensett	02	24.0	20.5	23.5	0.1	0.0
4788	Northwood-Kensett	03	20.5	18.0	21.5	0.2	0.0
4797	Norwalk	K	21.6	19.7	20.2	0.0	-0.1
4797	Norwalk	01	20.8	19.2	20.0	0.0	0.0
4797	Norwalk	02	23.3	22.6	22.8	0.0	0.0
4797	Norwalk	03	24.0	22.6	24.2	0.1	0.0
4860	Odebolt-Arthur	K	13.0	15.0	13.5	-0.1	0.0
4860	Odebolt-Arthur	01	13.0	13.5	15.0	0.1	0.2
4860	Odebolt-Arthur	02	19.0	12.5	12.5	0.0	-0.3
4860	Odebolt-Arthur	03	19.0	14.0	15.0	0.1	-0.2
4869	Oelwein	K	23.3	19.6	19.0	0.0	-0.2
4869	Oelwein	01	19.3	18.8	22.0	0.2	0.1
4869	Oelwein	02	21.3	20.0	19.8	0.0	-0.1

District Number	District Name	Grade	AVGCS 1998-1999	AVGCS 2013-2014	AVGCS 2014-2015	Percent Change from 2013-14 to 2014-15	Percent Change from 1998-99 to 2014-15
4869	Oelwein	03	24.0	22.0	20.8	-0.1	-0.1
4878	Ogden	K	17.7	17.3	21.5	0.2	0.2
4878	Ogden	01	16.7	20.0	24.5	0.2	0.5
4878	Ogden	02	18.0	18.3	22.5	0.2	0.3
4878	Ogden	03	19.3	18.5	19.7	0.1	0.0
4890	Okoboji	K	23.7	20.3	20.6	0.0	-0.1
4890	Okoboji	01	22.3	21.7	18.5	-0.1	-0.2
4890	Okoboji	02	23.3	22.0	23.3	0.1	0.0
4890	Okoboji	03	22.7	19.8	25.0	0.3	0.1
4905	Olin Consolidated	K	21.0	16.0	7.0	-0.6	-0.7
4905	Olin Consolidated	01	22.0	15.0	14.0	-0.1	-0.4
4905	Olin Consolidated	02	17.0	16.0	15.0	-0.1	-0.1
4905	Olin Consolidated	03	18.0	10.0	11.0	0.1	-0.4
4978	Orient-Macksburg	K	19.0	14.0	17.0	0.2	-0.1
4978	Orient-Macksburg	01	22.0	11.0	13.0	0.2	-0.4
4978	Orient-Macksburg	02	15.5	6.0	9.0	0.5	-0.4
4978	Orient-Macksburg	03	28.0	14.0	14.0	0.0	-0.5
4995	Osage	K	18.5	19.5	20.3	0.0	0.1
4995	Osage	01	20.7	18.0	18.8	0.0	-0.1
4995	Osage	02	20.8	22.0	21.3	0.0	0.0
4995	Osage	03	20.0	25.0	22.0	-0.1	0.1
5013	Oskaloosa	K	23.6	20.5	18.2	-0.1	-0.2
5013	Oskaloosa	01	21.4	21.5	20.1	-0.1	-0.1
5013	Oskaloosa	02	22.0	22.3	23.7	0.1	0.1
5013	Oskaloosa	03	24.0	23.9	21.9	-0.1	-0.1
5049	Ottumwa	K	19.8	14.4	19.6	0.4	0.0

District Number	District Name	Grade	AVGCS 1998-1999	AVGCS 2013-2014	AVGCS 2014-2015	Percent Change from 2013-14 to 2014-15	Percent Change from 1998-99 to 2014-15
5049	Ottumwa	01	20.3	15.4	18.5	0.2	-0.1
5049	Ottumwa	02	21.1	13.7	21.9	0.6	0.0
5049	Ottumwa	03	24.1	15.6	21.5	0.4	-0.1
5160	PCM	K	23.0	22.3	18.4	-0.2	-0.2
5160	PCM	01	20.5	20.8	22.3	0.1	0.1
5160	PCM	02	20.5	19.0	20.5	0.1	0.0
5160	PCM	03	17.0	21.0	19.0	-0.1	0.1
5121	Panorama	K	24.0	22.5	17.3	-0.2	-0.3
5121	Panorama	01	16.0	17.5	20.5	0.2	0.3
5121	Panorama	02	20.7	18.3	18.5	0.0	-0.1
5121	Panorama	03	25.5	18.7	17.3	-0.1	-0.3
5139	Paton-Churdan	K	14.0	18.0	20.0	0.1	0.4
5139	Paton-Churdan	01	14.0	12.0	19.0	0.6	0.4
5139	Paton-Churdan	02	15.0	12.0	14.0	0.2	-0.1
5139	Paton-Churdan	03	9.0	13.0	14.0	0.1	0.6
5163	Pekin	K	20.3	20.3	22.7	0.1	0.1
5163	Pekin	01	23.3	20.5	18.3	-0.1	-0.2
5163	Pekin	02	22.0	18.5	21.0	0.1	0.0
5163	Pekin	03	21.0	19.7	18.5	-0.1	-0.1
5166	Pella	K	22.1	21.6	18.5	-0.1	-0.2
5166	Pella	01	21.9	18.9	22.8	0.2	0.0
5166	Pella	02	22.2	19.5	18.8	0.0	-0.2
5166	Pella	03	20.1	22.6	20.5	-0.1	0.0
5184	Perry	K	21.2	19.5	19.0	0.0	-0.1
5184	Perry	01	17.2	24.0	20.0	-0.2	0.2
5184	Perry	02	21.7	21.5	22.7	0.1	0.0

District Number	District Name	Grade	AVGCS 1998-1999	AVGCS 2013-2014	AVGCS 2014-2015	Percent Change from 2013-14 to 2014-15	Percent Change from 1998-99 to 2014-15
5184	Perry	03	19.2	20.0	22.0	0.1	0.1
5250	Pleasant Valley	K	19.0	18.9	21.1	0.1	0.1
5250	Pleasant Valley	01	19.0	22.2	20.5	-0.1	0.1
5250	Pleasant Valley	02	21.4	22.6	22.9	0.0	0.1
5250	Pleasant Valley	03	22.5	21.1	22.1	0.0	0.0
5256	Pleasantville	K		20.5	18.7	-0.1	
5256	Pleasantville	01		16.3	23.0	0.4	
5256	Pleasantville	02		17.0	24.5	0.4	
5256	Pleasantville	03		27.0	26.0	0.0	
5283	Pocahontas Area	K	12.4	19.3	15.7	-0.2	0.3
5283	Pocahontas Area	01	18.0	20.0	19.5	0.0	0.1
5283	Pocahontas Area	02	19.0	19.0	20.0	0.1	0.1
5283	Pocahontas Area	03	18.8	23.0	19.0	-0.2	0.0
5310	Postville	K	20.3	18.3	20.7	0.1	0.0
5310	Postville	01	19.7	16.8	17.3	0.0	-0.1
5310	Postville	02	16.5	19.7	22.0	0.1	0.3
5310	Postville	03	18.5	27.0	18.0	-0.3	0.0
5325	Prairie Valley	K	20.0	25.5	23.0	-0.1	0.2
5325	Prairie Valley	01	19.0	23.0	18.0	-0.2	-0.1
5325	Prairie Valley	02	22.3	24.0	18.5	-0.2	-0.2
5325	Prairie Valley	03	20.3	17.5	18.5	0.1	-0.1
5328	Prescott	K	10.0	8.0	5.0	-0.4	-0.5
5328	Prescott	03	10.0	6.0	9.0	0.5	-0.1
5463	Red Oak	K	20.6	18.0	18.4	0.0	-0.1
5463	Red Oak	01	21.6	19.2	17.5	-0.1	-0.2
5463	Red Oak	02	20.8	21.8	19.8	-0.1	0.0

District Number	District Name	Grade	AVGCS 1998-1999	AVGCS 2013-2014	AVGCS 2014-2015	Percent Change from 2013-14 to 2014-15	Percent Change from 1998-99 to 2014-15
5463	Red Oak	03	20.2	20.3	20.5	0.0	0.0
5486	Remsen-Union	K	17.0	14.5	14.0	0.0	-0.2
5486	Remsen-Union	01	13.0	17.7	22.0	0.2	0.7
5486	Remsen-Union	02	13.5	22.0	17.5	-0.2	0.3
5486	Remsen-Union	03	25.0	14.3	22.0	0.5	-0.1
5508	Riceville	K	16.0	21.0	13.5	-0.4	-0.2
5508	Riceville	01	14.5	28.0	26.0	-0.1	0.8
5508	Riceville	02	18.5	25.0	17.0	-0.3	-0.1
5508	Riceville	03	21.5	17.0	27.0	0.6	0.3
1975	River Valley	K	18.5	17.5	9.7	-0.4	-0.5
1975	River Valley	01	19.5	16.5	18.0	0.1	-0.1
1975	River Valley	02	19.0	16.0	17.0	0.1	-0.1
1975	River Valley	03	20.0	16.5	14.5	-0.1	-0.3
5510	Riverside	K	19.0	20.3	18.0	-0.1	-0.1
5510	Riverside	01	21.0	15.3	15.0	0.0	-0.3
5510	Riverside	02	21.0	14.7	15.3	0.0	-0.3
5510	Riverside	03	23.0	19.0	14.7	-0.2	-0.4
5607	Rock Valley	K	23.0	17.4	16.4	-0.1	-0.3
5607	Rock Valley	01	22.0	18.2	17.8	0.0	-0.2
5607	Rock Valley	02	18.0	20.0	17.8	-0.1	0.0
5607	Rock Valley	03	25.0	17.0	21.0	0.2	-0.2
5643	Roland-Story	K	18.0	18.8	19.0	0.0	0.1
5643	Roland-Story	01	19.4	20.5	19.5	0.0	0.0
5643	Roland-Story	02	21.3	21.5	21.0	0.0	0.0
5643	Roland-Story	03	23.5	26.0	21.5	-0.2	-0.1
5697	Rudd-Rockford-Marble Rk	K	15.0	15.0	23.0	0.5	0.5

District Number	District Name	Grade	AVGCS 1998-1999	AVGCS 2013-2014	AVGCS 2014-2015	Percent Change from 2013-14 to 2014-15	Percent Change from 1998-99 to 2014-15
5697	Rudd-Rockford-Marble Rk	01	16.3	16.5	14.5	-0.1	-0.1
5697	Rudd-Rockford-Marble Rk	02	16.7	13.5	17.5	0.3	0.0
5697	Rudd-Rockford-Marble Rk	03	19.0	24.0	14.0	-0.4	-0.3
5724	Ruthven-Ayrshire	K	25.0	17.0	13.0	-0.2	-0.5
5724	Ruthven-Ayrshire	01	16.0	19.0	12.0	-0.4	-0.3
5724	Ruthven-Ayrshire	02	11.0	17.0	14.0	-0.2	0.3
5724	Ruthven-Ayrshire	03	26.0	17.0	14.0	-0.2	-0.5
5805	Saydel	K	19.7	23.5	20.2	-0.1	0.0
5805	Saydel	01	17.1	23.8	22.0	-0.1	0.3
5805	Saydel	02	23.8	19.8	22.6	0.1	-0.1
5805	Saydel	03	23.0	25.5	20.2	-0.2	-0.1
5823	Schaller-Crestland	K	14.5	17.5	19.0	0.1	0.3
5823	Schaller-Crestland	01	16.0	13.5	17.5	0.3	0.1
5823	Schaller-Crestland	02	18.5	17.5	28.0	0.6	0.5
5823	Schaller-Crestland	03	23.0	25.0	17.5	-0.3	-0.2
5832	Schleswig	K	14.0	14.7	16.0	0.1	0.1
5832	Schleswig	01	22.0	10.0	15.5	0.6	-0.3
5832	Schleswig	02	14.0	21.0	21.0	0.0	0.5
5832	Schleswig	03	25.0	20.0	20.0	0.0	-0.2
5877	Sergeant Bluff-Luton	K	18.0	20.5	18.2	-0.1	0.0
5877	Sergeant Bluff-Luton	01	19.2	22.0	21.2	0.0	0.1
5877	Sergeant Bluff-Luton	02	22.8	19.6	22.5	0.1	0.0
5877	Sergeant Bluff-Luton	03	22.0	23.6	22.2	-0.1	0.0
5895	Seymour	K	20.0	26.0	13.0	-0.5	-0.4
5895	Seymour	01	13.0	21.0	13.0	-0.4	0.0
5895	Seymour	02	14.5	20.0	19.0	-0.1	0.3

District Number	District Name	Grade	AVGCS 1998-1999	AVGCS 2013-2014	AVGCS 2014-2015	Percent Change from 2013-14 to 2014-15	Percent Change from 1998-99 to 2014-15
5895	Seymour	03	28.0	19.0	21.0	0.1	-0.3
5949	Sheldon	K	19.8	19.8	17.3	-0.1	-0.1
5949	Sheldon	01	20.0	21.0	18.3	-0.1	-0.1
5949	Sheldon	02	17.5	24.7	18.5	-0.3	0.1
5949	Sheldon	03	21.0	24.7	24.7	0.0	0.2
5976	Shenandoah	K	19.3	17.4	22.3	0.3	0.2
5976	Shenandoah	01	21.3	16.0	20.5	0.3	0.0
5976	Shenandoah	02	20.3	18.3	18.3	0.0	-0.1
5976	Shenandoah	03	20.0	16.8	19.3	0.1	0.0
5994	Sibley-Ocheyedan	K	21.3	17.3	17.3	0.0	-0.2
5994	Sibley-Ocheyedan	01	21.3	17.7	22.3	0.3	0.0
5994	Sibley-Ocheyedan	02	21.8	16.5	18.0	0.1	-0.2
5994	Sibley-Ocheyedan	03	19.3	21.0	23.0	0.1	0.2
6003	Sidney	K	12.0	21.0	15.5	-0.3	0.3
6003	Sidney	01	17.0	24.0	18.0	-0.3	0.1
6003	Sidney	02	22.0	23.0	19.0	-0.2	-0.1
6003	Sidney	03	23.0	22.0	22.0	0.0	0.0
6012	Sigourney	K	16.3	17.0	20.0	0.2	0.2
6012	Sigourney	01	18.0	20.0	16.5	-0.2	-0.1
6012	Sigourney	02	20.0	14.5	21.0	0.4	0.1
6012	Sigourney	03	17.0	22.5	16.5	-0.3	0.0
6030	Sioux Center	K	16.3	13.2	14.6	0.1	-0.1
6030	Sioux Center	01	20.3	17.0	17.8	0.0	-0.1
6030	Sioux Center	02	26.3	16.7	17.8	0.1	-0.3
6030	Sioux Center	03	26.3	18.6	17.8	0.0	-0.3
6035	Sioux Central	K	14.0	15.3	14.0	-0.1	0.0

District Number	District Name	Grade	AVGCS 1998-1999	AVGCS 2013-2014	AVGCS 2014-2015	Percent Change from 2013-14 to 2014-15	Percent Change from 1998-99 to 2014-15
6035	Sioux Central	01	18.0	14.5	23.0	0.6	0.3
6035	Sioux Central	02	16.5	20.0	16.5	-0.2	0.0
6035	Sioux Central	03	21.5	20.5	19.0	-0.1	-0.1
6039	Sioux City	K	19.7	21.3	21.1	0.0	0.1
6039	Sioux City	01	19.6	21.4	20.5	0.0	0.0
6039	Sioux City	02	19.6	23.0	22.7	0.0	0.2
6039	Sioux City	03	21.4	24.4	23.9	0.0	0.1
6093	Solon	K	21.0	19.2	18.7	0.0	-0.1
6093	Solon	01	18.0	18.2	22.6	0.2	0.3
6093	Solon	02	20.0	23.8	18.4	-0.2	-0.1
6093	Solon	03	23.7	22.0	21.7	0.0	-0.1
6091	South Central Calhoun	K	14.3	15.2	17.6	0.2	0.2
6091	South Central Calhoun	01	14.7	18.7	17.0	-0.1	0.2
6091	South Central Calhoun	02	18.0	17.5	18.7	0.1	0.0
6091	South Central Calhoun	03	16.0	17.0	18.3	0.1	0.1
6095	South Hamilton	K	21.0	17.0	16.7	0.0	-0.2
6095	South Hamilton	01	17.3	16.3	15.7	0.0	-0.1
6095	South Hamilton	02	19.7	24.0	15.7	-0.3	-0.2
6095	South Hamilton	03	21.7	20.0	25.0	0.3	0.2
6099	South O'Brien	K	17.7	18.0	17.3	0.0	0.0
6099	South O'Brien	01	18.7	19.5	20.5	0.1	0.1
6099	South O'Brien	02	16.3	23.0	21.0	-0.1	0.3
6099	South O'Brien	03	19.3	22.5	22.0	0.0	0.1
6097	South Page	K	12.0	6.0	11.0	0.8	-0.1
6097	South Page	01	16.5	15.0	6.0	-0.6	-0.6
6097	South Page	02	17.0	13.0	14.0	0.1	-0.2

District Number	District Name	Grade	AVGCS 1998-1999	AVGCS 2013-2014	AVGCS 2014-2015	Percent Change from 2013-14 to 2014-15	Percent Change from 1998-99 to 2014-15
6097	South Page	03	28.0	6.0	13.0	1.2	-0.5
6098	South Tama County	K	19.2	20.6	20.2	0.0	0.1
6098	South Tama County	01	18.8	20.0	23.0	0.2	0.2
6098	South Tama County	02	19.8	22.8	22.0	0.0	0.1
6098	South Tama County	03	23.8	19.6	23.2	0.2	0.0
6100	South Winneshiek	K	15.0	17.5	12.5	-0.3	-0.2
6100	South Winneshiek	01	22.5	17.5	16.0	-0.1	-0.3
6100	South Winneshiek	02	15.5	14.0	14.0	0.0	-0.1
6100	South Winneshiek	03	24.0	17.5	15.5	-0.1	-0.4
6101	Southeast Polk	K	21.1	23.6	20.0	-0.2	-0.1
6101	Southeast Polk	01	20.9	24.1	23.8	0.0	0.1
6101	Southeast Polk	02	22.7	23.0	22.3	0.0	0.0
6101	Southeast Polk	03	23.1	23.4	24.5	0.0	0.1
6094	Southeast Warren	K		20.0	15.0	-0.3	
6094	Southeast Warren	01		21.0	20.0	0.0	
6094	Southeast Warren	02		14.5	21.5	0.5	
6094	Southeast Warren	03		19.0	15.0	-0.2	
6096	Southeast Webster Grand	K	13.3	16.3	17.0	0.0	0.3
6096	Southeast Webster Grand	01	15.3	18.5	17.0	-0.1	0.1
6096	Southeast Webster Grand	02	15.3	20.0	19.0	-0.1	0.2
6096	Southeast Webster Grand	03	20.3	19.5	19.5	0.0	0.0
6102	Spencer	K	17.1	19.8	18.8	-0.1	0.1
6102	Spencer	01	20.1	21.8	21.9	0.0	0.1
6102	Spencer	02	19.7	22.0	21.9	0.0	0.1
6102	Spencer	03	21.5	24.7	22.7	-0.1	0.1
6120	Spirit Lake	K	20.3	20.3	21.2	0.0	0.0

District Number	District Name	Grade	AVGCS 1998-1999	AVGCS 2013-2014	AVGCS 2014-2015	Percent Change from 2013-14 to 2014-15	Percent Change from 1998-99 to 2014-15
6120	Spirit Lake	01	24.5	22.5	19.5	-0.1	-0.2
6120	Spirit Lake	02	25.8	25.3	22.8	-0.1	-0.1
6120	Spirit Lake	03	25.0	21.8	23.3	0.1	-0.1
6138	Springville	K	17.5	12.5	22.0	0.8	0.3
6138	Springville	01	16.5	14.0	12.0	-0.1	-0.3
6138	Springville	02	25.0	23.0	12.0	-0.5	-0.5
6138	Springville	03	17.5	26.0	24.0	-0.1	0.4
5751	St Ansgar	K	18.0	18.3	15.3	-0.2	-0.1
5751	St Ansgar	01	18.3	16.0	25.0	0.6	0.4
5751	St Ansgar	02	16.7	20.0	17.0	-0.2	0.0
5751	St Ansgar	03	21.0	19.5	22.0	0.1	0.0
6165	Stanton	K	21.0	15.0	15.0	0.0	-0.3
6165	Stanton	01	21.0	20.0	14.0	-0.3	-0.3
6165	Stanton	02	26.0	11.0	20.0	0.8	-0.2
6165	Stanton	03	26.0	19.0	15.0	-0.2	-0.4
6175	Starmont	K	23.7	16.0	19.3	0.2	-0.2
6175	Starmont	01	24.5	14.0	15.0	0.1	-0.4
6175	Starmont	02	23.5	23.5	19.5	-0.2	-0.2
6175	Starmont	03	19.5	22.0	23.5	0.1	0.2
6219	Storm Lake	K	22.4	23.4	21.1	-0.1	-0.1
6219	Storm Lake	01	24.8	21.0	24.3	0.2	0.0
6219	Storm Lake	02	23.2	21.0	20.4	0.0	-0.1
6219	Storm Lake	03	23.2	25.1	20.9	-0.2	-0.1
6246	Stratford	K	17.0	12.0	12.0	0.0	-0.3
6273	Sumner-Fredericksburg	K	28.5	17.0	20.3	0.2	-0.3
6273	Sumner-Fredericksburg	01	26.0	18.8	19.5	0.0	-0.3

District Number	District Name	Grade	AVGCS 1998-1999	AVGCS 2013-2014	AVGCS 2014-2015	Percent Change from 2013-14 to 2014-15	Percent Change from 1998-99 to 2014-15
6273	Sumner-Fredericksburg	02	22.0	17.5	18.8	0.1	-0.1
6273	Sumner-Fredericksburg	03	18.5	22.0	16.8	-0.2	-0.1
6408	Tipton	K	21.0	24.0	24.7	0.0	0.2
6408	Tipton	01	22.0	20.3	23.3	0.2	0.1
6408	Tipton	02	23.3	21.7	20.3	-0.1	-0.1
6408	Tipton	03	25.3	24.3	23.0	-0.1	-0.1
6453	Treynor	K	17.5	17.3	19.0	0.1	0.1
6453	Treynor	01	19.5	18.3	17.7	0.0	-0.1
6453	Treynor	02	23.5	21.0	18.0	-0.1	-0.2
6453	Treynor	03	23.0	21.7	21.3	0.0	-0.1
6460	Tri-Center	K	14.3	18.0	18.0	0.0	0.3
6460	Tri-Center	01	17.3	16.3	17.0	0.0	0.0
6460	Tri-Center	02	17.3	22.5	16.3	-0.3	-0.1
6460	Tri-Center	03	19.7	15.7	14.3	-0.1	-0.3
6462	Tri-County	K	12.5	18.0	19.0	0.1	0.5
6462	Tri-County	01	13.5	15.0	18.0	0.2	0.3
6462	Tri-County	02	16.0	16.0	12.0	-0.3	-0.3
6462	Tri-County	03	11.5	24.0	16.0	-0.3	0.4
6471	Tripoli	K	21.0	13.5	13.0	0.0	-0.4
6471	Tripoli	01	23.5	11.0	16.0	0.5	-0.3
6471	Tripoli	02	17.5	13.5	22.0	0.6	0.3
6471	Tripoli	03	18.5	16.0	12.0	-0.3	-0.4
6509	Turkey Valley	K	18.0	21.0	12.0	-0.4	-0.3
6509	Turkey Valley	01	16.5	14.0	22.0	0.6	0.3
6509	Turkey Valley	02	21.5	21.0	25.0	0.2	0.2
6509	Turkey Valley	03	19.0	12.5	20.0	0.6	0.1

District Number	District Name	Grade	AVGCS 1998-1999	AVGCS 2013-2014	AVGCS 2014-2015	Percent Change from 2013-14 to 2014-15	Percent Change from 1998-99 to 2014-15
6512	Twin Cedars	K	18.0	11.0	18.0	0.6	0.0
6512	Twin Cedars	01	14.0	15.0	11.5	-0.2	-0.2
6512	Twin Cedars	02	17.0	17.0	15.0	-0.1	-0.1
6512	Twin Cedars	03	18.5	12.0	17.0	0.4	-0.1
6534	Underwood	K	19.5	14.0	18.0	0.3	-0.1
6534	Underwood	01	25.0	15.0	19.0	0.3	-0.2
6534	Underwood	02	17.3	17.7	21.0	0.2	0.2
6534	Underwood	03	19.5	24.0	18.3	-0.2	-0.1
6536	Union	K	15.4	15.2	18.8	0.2	0.2
6536	Union	01	20.4	14.4	15.6	0.1	-0.2
6536	Union	02	19.0	21.5	14.8	-0.3	-0.2
6536	Union	03	19.2	19.7	21.8	0.1	0.1
6561	United	K	16.0	17.5	25.0	0.4	0.6
6561	United	01	14.0	20.0	15.5	-0.2	0.1
6561	United	02	14.0	15.0	19.0	0.3	0.4
6561	United	03	16.0	21.0	27.0	0.3	0.7
6579	Urbandale	K	15.7	23.1	21.7	-0.1	0.4
6579	Urbandale	01	22.8	21.1	23.3	0.1	0.0
6579	Urbandale	02	23.4	21.6	21.0	0.0	-0.1
6579	Urbandale	03	22.1	22.2	21.5	0.0	0.0
6591	Valley	K		29.0	23.0	-0.2	
6591	Valley	01		24.0	13.0	-0.5	
6591	Valley	02		28.0	27.0	0.0	
6591	Valley	03		30.0	26.0	-0.1	
6592	Van Buren	K	19.3	24.0	20.0	-0.2	0.0
6592	Van Buren	01	21.0	21.5	23.0	0.1	0.1

District Number	District Name	Grade	AVGCS 1998-1999	AVGCS 2013-2014	AVGCS 2014-2015	Percent Change from 2013-14 to 2014-15	Percent Change from 1998-99 to 2014-15
6592	Van Buren	02	18.0	18.5	22.5	0.2	0.3
6592	Van Buren	03	19.0	20.5	16.0	-0.2	-0.2
6615	Van Meter	K	15.7	20.5	13.7	-0.3	-0.1
6615	Van Meter	01	22.5	17.3	15.3	-0.1	-0.3
6615	Van Meter	02	16.0	20.0	17.7	-0.1	0.1
6615	Van Meter	03	22.0	25.5	24.5	0.0	0.1
6633	Ventura	K	15.5	9.0	11.0	0.2	-0.3
6633	Ventura	01	17.0	13.0	9.0	-0.3	-0.5
6633	Ventura	02	13.5	6.0	11.0	0.8	-0.2
6633	Ventura	03	16.5	15.0	6.0	-0.6	-0.6
6651	Villisca	K	16.0	18.0	20.0	0.1	0.3
6651	Villisca	01	16.5	12.5	20.0	0.6	0.2
6651	Villisca	02	16.5	18.0	29.0	0.6	0.8
6651	Villisca	03	20.0	14.0	18.0	0.3	-0.1
6660	Vinton-Shellsburg	K	18.6	19.8	20.0	0.0	0.1
6660	Vinton-Shellsburg	01	20.4	20.6	20.0	0.0	0.0
6660	Vinton-Shellsburg	02	21.4	19.9	18.8	-0.1	-0.1
6660	Vinton-Shellsburg	03	20.4	20.2	20.5	0.0	0.0
6700	Waco	K	17.0	20.0	21.0	0.1	0.2
6700	Waco	01	20.0	16.0	18.5	0.2	-0.1
6700	Waco	02	16.0	16.0	16.0	0.0	0.0
6700	Waco	03	26.0	18.5	15.5	-0.2	-0.4
6750	Walnut	K	14.0	6.0	16.0	1.7	0.1
6750	Walnut	01	17.0	8.0	6.0	-0.3	-0.6
6750	Walnut	02	17.0	9.0	10.0	0.1	-0.4
6750	Walnut	03	20.0	9.0	10.0	0.1	-0.5

District Number	District Name	Grade	AVGCS 1998-1999	AVGCS 2013-2014	AVGCS 2014-2015	Percent Change from 2013-14 to 2014-15	Percent Change from 1998-99 to 2014-15
6759	Wapello	K	18.7	19.0	18.0	-0.1	0.0
6759	Wapello	01	18.7	21.0	21.0	0.0	0.1
6759	Wapello	02	18.7	17.5	22.0	0.3	0.2
6759	Wapello	03	20.0	18.5	18.0	0.0	-0.1
6762	Wapsie Valley	K	12.3	15.5	18.5	0.2	0.5
6762	Wapsie Valley	01	16.7	11.3	17.0	0.5	0.0
6762	Wapsie Valley	02	18.0	15.0	13.0	-0.1	-0.3
6762	Wapsie Valley	03	15.7	16.3	17.0	0.0	0.1
6768	Washington	K	21.5	19.3	19.2	0.0	-0.1
6768	Washington	01	18.7	20.4	23.6	0.2	0.3
6768	Washington	02	22.7	20.6	21.4	0.0	-0.1
6768	Washington	03	21.2	21.6	21.0	0.0	0.0
6795	Waterloo	K	23.7	22.2	22.5	0.0	-0.1
6795	Waterloo	01	23.1	22.2	21.4	0.0	-0.1
6795	Waterloo	02	25.1	21.7	22.6	0.0	-0.1
6795	Waterloo	03	24.0	22.0	23.5	0.1	0.0
6822	Waukee	K		22.3	22.6	0.0	
6822	Waukee	01		21.5	22.2	0.0	
6822	Waukee	02		24.7	22.2	-0.1	
6822	Waukee	03		23.4	24.1	0.0	
6840	Waverly-Shell Rock	K	19.0	20.9	20.4	0.0	0.1
6840	Waverly-Shell Rock	01	19.5	20.4	20.6	0.0	0.1
6840	Waverly-Shell Rock	02	19.5	20.6	21.4	0.0	0.1
6840	Waverly-Shell Rock	03	19.7	20.5	20.4	0.0	0.0
6854	Wayne	K	16.0	13.5	13.3	0.0	-0.2
6854	Wayne	01	15.7	22.5	12.7	-0.4	-0.2

District Number	District Name	Grade	AVGCS 1998-1999	AVGCS 2013-2014	AVGCS 2014-2015	Percent Change from 2013-14 to 2014-15	Percent Change from 1998-99 to 2014-15
6854	Wayne	02	14.7	18.5	22.0	0.2	0.5
6854	Wayne	03	23.0	18.0	18.5	0.0	-0.2
6867	Webster City	K	18.3	23.4	21.2	-0.1	0.2
6867	Webster City	01	19.5	22.8	22.8	0.0	0.2
6867	Webster City	02	20.0	20.7	23.6	0.1	0.2
6867	Webster City	03	24.8	21.8	23.4	0.1	-0.1
6921	West Bend-Mallard	K	17.5	25.0	21.0	-0.2	0.2
6921	West Bend-Mallard	01	12.0	24.0	26.0	0.1	1.2
6921	West Bend-Mallard	02	12.0	22.0	23.0	0.0	0.9
6921	West Bend-Mallard	03	12.0	18.0	24.0	0.3	1.0
6930	West Branch	K		19.7	22.7	0.2	
6930	West Branch	01		21.0	20.0	0.0	
6930	West Branch	02		16.0	20.0	0.3	
6930	West Branch	03		19.0	17.0	-0.1	
6937	West Burlington Ind	K	21.0	19.0	19.0	0.0	-0.1
6937	West Burlington Ind	01	18.3	19.3	19.0	0.0	0.0
6937	West Burlington Ind	02	17.0	17.8	19.0	0.1	0.1
6937	West Burlington Ind	03	26.5	23.7	19.0	-0.2	-0.3
6943	West Central	K	9.5	12.0	23.0	0.9	1.4
6943	West Central	01	20.0	17.0	12.0	-0.3	-0.4
6943	West Central	02	12.0	15.0	18.0	0.2	0.5
6943	West Central	03	14.0	18.0	19.0	0.1	0.4
6264	West Central Valley	K	17.5	14.3	15.5	0.1	-0.1
6264	West Central Valley	01	18.0	19.7	13.8	-0.3	-0.2
6264	West Central Valley	02	14.5	18.0	16.3	-0.1	0.1
6264	West Central Valley	03	22.3	17.0	17.5	0.0	-0.2

District Number	District Name	Grade	AVGCS 1998-1999	AVGCS 2013-2014	AVGCS 2014-2015	Percent Change from 2013-14 to 2014-15	Percent Change from 1998-99 to 2014-15
6950	West Delaware County	K	21.7	16.9	19.7	0.2	-0.1
6950	West Delaware County	01	17.7	19.6	19.8	0.0	0.1
6950	West Delaware County	02	26.2	22.4	26.3	0.2	0.0
6950	West Delaware County	03	24.6	21.0	21.8	0.0	-0.1
6957	West Des Moines	K	22.0	24.6	25.8	0.1	0.2
6957	West Des Moines	01	22.5	25.2	25.4	0.0	0.1
6957	West Des Moines	02	21.7	25.1	24.8	0.0	0.1
6957	West Des Moines	03	23.8	25.2	25.5	0.0	0.1
5922	West Fork CSD	K	17.3	15.0	14.7	0.0	-0.2
5922	West Fork CSD	01	15.3	18.0	23.5	0.3	0.5
5922	West Fork CSD	02	14.0	20.0	19.7	0.0	0.4
5922	West Fork CSD	03	16.8	23.5	20.5	-0.1	0.2
0819	West Hancock	K	15.0	22.5	23.7	0.1	0.6
0819	West Hancock	01	18.0	14.0	21.0	0.5	0.2
0819	West Hancock	02	19.0	25.5	21.5	-0.2	0.1
0819	West Hancock	03	17.7	24.0	25.0	0.0	0.4
6969	West Harrison	K	16.0	24.0	20.0	-0.2	0.3
6969	West Harrison	01	17.5	18.0	25.0	0.4	0.4
6969	West Harrison	02	19.0	21.0	23.0	0.1	0.2
6969	West Harrison	03	22.0	15.0	20.0	0.3	-0.1
6975	West Liberty	K	18.5	17.4	18.5	0.1	0.0
6975	West Liberty	01	20.8	15.6	17.0	0.1	-0.2
6975	West Liberty	02	20.8	18.8	16.6	-0.1	-0.2
6975	West Liberty	03	22.3	19.0	18.8	0.0	-0.2
6983	West Lyon	K	20.3	15.5	15.4	0.0	-0.2
6983	West Lyon	01	15.7	21.0	18.0	-0.1	0.1

District Number	District Name	Grade	AVGCS 1998-1999	AVGCS 2013-2014	AVGCS 2014-2015	Percent Change from 2013-14 to 2014-15	Percent Change from 1998-99 to 2014-15
6983	West Lyon	02	19.0	16.8	21.5	0.3	0.1
6983	West Lyon	03	18.3	19.0	16.8	-0.1	-0.1
6985	West Marshall	K	21.3	17.0	19.0	0.1	-0.1
6985	West Marshall	01	22.3	18.8	17.5	-0.1	-0.2
6985	West Marshall	02	20.0	17.0	18.5	0.1	-0.1
6985	West Marshall	03	18.3	23.7	18.5	-0.2	0.0
6987	West Monona	K	16.7	9.0	17.5	0.9	0.0
6987	West Monona	01	20.7	6.3	17.7	1.8	-0.1
6987	West Monona	02	23.5	10.0	19.5	1.0	-0.2
6987	West Monona	03	18.0	9.7	21.0	1.2	0.2
6990	West Sioux	K	20.7	17.7	19.0	0.1	-0.1
6990	West Sioux	01	17.3	16.0	22.0	0.4	0.3
6990	West Sioux	02	15.3	13.7	20.0	0.5	0.3
6990	West Sioux	03	19.3	14.7	20.0	0.4	0.0
6961	Western Dubuque	K	20.0	18.5	16.9	-0.1	-0.2
6961	Western Dubuque	01	22.7	20.2	17.4	-0.1	-0.2
6961	Western Dubuque	02	20.4	20.1	20.6	0.0	0.0
6961	Western Dubuque	03	24.0	21.4	19.7	-0.1	-0.2
6992	Westwood	K	22.5	18.5	13.5	-0.3	-0.4
6992	Westwood	01	20.7	18.3	22.0	0.2	0.1
6992	Westwood	02	21.0	20.0	17.7	-0.1	-0.2
6992	Westwood	03	24.5	20.0	23.0	0.2	-0.1
7002	Whiting	K	19.0	13.0	16.0	0.2	-0.2
7002	Whiting	01	9.0	16.0	10.0	-0.4	0.1
7002	Whiting	02	15.0	21.0	14.0	-0.3	-0.1
7002	Whiting	03	26.0	21.0	16.0	-0.2	-0.4

District Number	District Name	Grade	AVGCS 1998-1999	AVGCS 2013-2014	AVGCS 2014-2015	Percent Change from 2013-14 to 2014-15	Percent Change from 1998-99 to 2014-15
7029	Williamsburg	K	15.8	18.0	18.8	0.0	0.2
7029	Williamsburg	01	18.3	19.6	20.8	0.1	0.1
7029	Williamsburg	02	17.5	19.6	21.0	0.1	0.2
7029	Williamsburg	03	19.8	19.6	23.5	0.2	0.2
7038	Wilton	K	22.7	20.3	24.0	0.2	0.1
7038	Wilton	01	20.8	25.7	21.7	-0.2	0.0
7038	Wilton	02	25.0	29.5	26.7	-0.1	0.1
7038	Wilton	03	24.0	31.5	29.0	-0.1	0.2
7047	Winfield-Mt Union	K	16.0	15.0	14.5	0.0	-0.1
7047	Winfield-Mt Union	01	16.5	21.0	14.5	-0.3	-0.1
7047	Winfield-Mt Union	02	16.5	16.0	23.0	0.4	0.4
7047	Winfield-Mt Union	03	15.0	15.5	16.0	0.0	0.1
7056	Winterset	K	24.2	20.8	20.2	0.0	-0.2
7056	Winterset	01	22.8	24.0	22.0	-0.1	0.0
7056	Winterset	02	21.2	25.6	25.6	0.0	0.2
7056	Winterset	03	21.8	25.0	25.8	0.0	0.2
7092	Woodbine	K	17.0	23.0	18.0	-0.2	0.1
7092	Woodbine	01	18.0	20.5	23.0	0.1	0.3
7092	Woodbine	02	18.0	17.0	21.0	0.2	0.2
7092	Woodbine	03	16.0	15.0	17.0	0.1	0.1
7098	Woodbury Central	K	24.5	22.0	14.5	-0.3	-0.4
7098	Woodbury Central	01	25.0	21.5	22.0	0.0	-0.1
7098	Woodbury Central	02	20.0	23.5	23.0	0.0	0.2
7098	Woodbury Central	03	25.5	19.0	25.5	0.3	0.0
7110	Woodward-Granger	K	18.5	18.3	19.8	0.1	0.1
7110	Woodward-Granger	01	17.5	23.0	19.0	-0.2	0.1

District Number	District Name	Grade	AVGCS 1998-1999	AVGCS 2013-2014	AVGCS 2014-2015	Percent Change from 2013-14 to 2014-15	Percent Change from 1998-99 to 2014-15
7110	Woodward-Granger	02	19.5	19.3	22.0	0.1	0.1
7110	Woodward-Granger	03	19.0	19.0	19.3	0.0	0.0

**APPENDIX D. IOWA PUBLIC SCHOOL DISTRICTS' FY14 EARLY
INTERVENTION BLOCK GRANT PROGRAM EXPENDITURES
BY OBJECT AS OF 12/05/14**

District	District Name	Salaries	Benefits	Purchased Services	Supplies	Total
0009	AGWSR	23,263	8,441	0	0	31,704
0018	Adair-Casey	16,771	5,803	0	0	22,574
0027	Adel DeSoto Minburn	72,782	14,888	0	0	87,670
0063	Akron Westfield	33,579	8,455	0	0	42,034
0072	Albert City-Truesdale	6,354	1,629	0	0	7,983
0081	Albia	43,666	23,777	0	0	67,443
0099	Alburnett	20,720	7,245	0	0	27,965
0108	Alden	16,213	2,537	0	0	18,750
0126	Algona	69,440	22,675	0	0	92,114
0135	Allamakee	52,294	20,095	0	0	72,389
0153	North Butler	29,180	4,834	0	0	34,014
0171	Alta	27,993	10,250	0	0	38,243
0225	Ames	165,702	79,563	0	0	245,265
0234	Anamosa	60,941	9,903	0	0	70,844
0243	Andrew	16,959	2,812	0	0	19,771
0261	Ankeny	423,440	88,864	0	0	512,304
0279	Aplington-Parkersburg	48,604	16,366	0	0	64,969
0333	North Union	0	0	20,698	0	20,698
0355	Ar-We-Va	16,361	0	0	0	16,361
0387	Atlantic	73,519	28,392	0	0	101,911
0414	Audubon	24,527	4,067	0	210	28,803
0423	Aurelia	11,154	4,403	0	0	15,557
0441	A-H-S-T	26,355	4,168	0	0	30,523
0472	Ballard	78,206	15,682	0	0	93,887
0504	Battle Creek-Ida Grove	41,777	0	0	0	41,777

District	District Name	Salaries	Benefits	Purchased Services	Supplies	Total
0513	Baxter	19,347	3,254	0	0	22,601
0540	BCLUW	23,912	8,632	0	0	32,544
0549	Bedford	28,659	4,752	0	0	33,411
0576	Belle Plaine	25,763	9,502	0	0	35,265
0585	Bellevue	18,473	15,367	0	0	33,840
0594	Belmond-Klemme	50,744	13,883	0	0	64,627
0603	Bennett	16,936	2,808	0	0	19,744
0609	Benton	67,572	10,729	0	0	78,301
0621	Bettendorf	170,105	66,089	0	0	236,194
0657	Eddyville-Blakesburg-	51,461	10,701	0	0	62,162
0720	Bondurant-Farrar	70,381	18,237	0	0	88,618
0729	Boone	114,119	18,921	0	0	133,040
0747	Boyden-Hull	32,211	11,994	0	0	44,205
0819	West Hancock	28,221	9,946	0	0	38,167
0846	Brooklyn-Guernsey-Malcom	18,918	11,915	0	0	30,833
0873	North Iowa	19,146	7,524	0	0	26,670
0882	Burlington	225,691	107,951	0	0	333,642
0914	CAM	18,555	7,201	0	0	25,756
0916	CAL	15,519	3,084	0	0	18,603
0918	Calamus-Wheatland	25,969	5,436	0	0	31,405
0936	Camanche	48,596	11,937	0	0	60,533
0977	Cardinal	27,475	14,225	0	0	41,700
0981	Carlisle	95,824	15,185	0	0	111,009
0999	Carroll	69,624	29,541	0	0	99,165
1044	Cedar Falls	230,518	65,699	0	0	296,217
1053	Cedar Rapids	872,844	177,689	0	0	1,050,534
1062	Center Point-Urbana	59,799	18,282	0	0	78,081

District	District Name	Salaries	Benefits	Purchased Services	Supplies	Total
1071	Centerville	67,019	21,307	0	0	88,326
1079	Central Lee	42,652	7,196	0	0	49,848
1080	Central	20,229	5,453	0	0	25,682
1082	Central DeWitt	54,025	26,961	0	0	80,986
1089	Central City	22,976	8,053	0	0	31,029
1093	Central Decatur	42,730	7,527	0	0	50,257
1095	Central Lyon	22,366	15,000	0	0	37,366
1107	Chariton	84,330	13,982	0	0	98,312
1116	Charles City	72,757	23,526	0	0	96,283
1134	Charter Oak-Ute	15,946	5,147	0	0	21,093
1152	Cherokee	46,059	16,126	0	0	62,185
1197	Clarinda	37,200	15,190	0	0	52,390
1206	Clarion-Goldfield-Dows	37,894	15,668	0	0	53,562
1211	Clarke	73,356	26,562	0	0	99,918
1215	Clarksville	8,721	14,630	0	0	23,351
1218	Clay Central-Everyly	16,930	4,837	0	27	21,794
1221	Clear Creek Amana	66,349	21,941	0	0	88,290
1224	Clearfield	4,853	805	0	0	5,658
1233	Clear Lake	35,462	37,247	0	0	72,709
1278	Clinton	195,169	90,028	0	0	285,197
1332	Colfax-Mingo	39,214	6,186	0	0	45,400
1337	College	249,119	46,796	0	0	295,915
1350	Collins-Maxwell	27,282	2,273	0	0	29,555
1359	Colo-NESCO School	25,900	4,269	0	0	30,169
1368	Columbus	46,624	14,667	0	0	61,291
1413	Coon Rapids-Bayard	26,089	5,511	0	120	31,720
1431	Corning	20,916	9,880	0	0	30,796

District	District Name	Salaries	Benefits	Purchased Services	Supplies	Total
1449	Corwith-Wesley	0	0	0	0	0
1476	Council Bluffs	523,005	159,468	0	0	682,473
1503	Creston	76,868	19,535	0	243	96,646
1576	Dallas Center-Grimes	93,403	33,359	0	0	126,762
1602	Danville	26,346	5,300	0	0	31,646
1611	Davenport	894,493	315,528	0	0	1,210,021
1619	Davis County	47,148	16,926	0	0	64,074
1638	Decorah Community	61,954	20,467	0	0	82,421
1675	Delwood	9,665	3,490	0	0	13,155
1701	Denison	108,044	46,770	0	0	154,814
1719	Denver	29,685	4,922	0	0	34,607
1737	Des Moines	1,925,000	794,187	0	0	2,719,187
1782	Diagonal	9,369	1,553	0	0	10,922
1791	Dike-New Hartford	33,640	11,904	0	0	45,544
1854	Dows	6,475	1,038	0	0	7,513
1863	Dubuque	459,908	227,241	0	0	687,149
1908	Dunkerton	20,841	8,646	0	0	29,487
1917	Boyer Valley	25,730	4,266	0	0	29,996
1926	Durant	23,900	8,010	0	0	31,910
1944	Eagle Grove	46,028	8,921	0	851	55,800
1953	Earlham	24,911	14,683	0	0	39,594
1963	East Buchanan	29,757	4,205	0	0	33,962
1965	Easton Valley	30,980	5,136	0	0	36,116
1967	Greene County	7,583	5,141	0	0	12,724
1968	East Marshall	30,681	12,058	0	0	42,739
1970	East Union	27,855	4,618	0	0	32,473
1972	Eastern Allamakee	18,326	7,725	0	0	26,051
1975	River Valley	25,328	4,492	0	0	29,820

District	District Name	Salaries	Benefits	Purchased Services	Supplies	Total
1989	Edgewood-Colesburg	27,093	4,479	0	0	31,572
2007	Eldora-New Providence	31,547	9,752	0	0	41,299
2016	ExiraElk Horn-Kimballton	13,185	2,183	0	0	15,368
2088	Emmetsburg	36,071	6,055	0	0	42,126
2097	English Valleys	24,037	8,710	0	0	32,747
2113	Essex	17,248	2,859	0	0	20,107
2124	Estherville Lincoln	66,875	25,250	0	0	92,125
2151	Exira-Elk Horn-	9,500	3,186	0	0	12,686
2169	Fairfield	105,201	0	0	0	105,201
2205	Farragut	10,878	1,807	0	0	12,685
2295	Forest City	53,437	18,300	0	0	71,737
2313	Fort Dodge	188,168	77,782	0	0	265,950
2322	Fort Madison	123,148	19,159	0	0	142,307
2349	Fredericksburg	13,448	2,252	0	0	15,700
2369	Fremont-Mills	21,551	7,199	0	0	28,750
2376	Galva-Holstein	18,338	9,035	0	0	27,373
2403	Garner-Hayfield	39,592	14,865	0	0	54,457
2457	George-Little Rock	24,315	4,209	0	0	28,524
2466	Gilbert	48,137	11,804	0	363	60,304
2493	Gilmore City-Bradgate	5,140	853	0	0	5,993
2502	Gladbrook-Reinbeck	25,800	4,097	0	0	29,897
2511	Glenwood	88,548	37,536	0	0	126,084
2520	Glidden-Ralston	16,122	3,599	0	0	19,721
2556	Graettinger-Terril	17,837	5,081	0	187	23,105
2673	Nodaway Valley	27,858	14,755	0	0	42,613
2682	GMG	20,176	3,391	0	0	23,567
2709	Grinnell-Newburg	92,283	15,301	0	0	107,584

District	District Name	Salaries	Benefits	Purchased Services	Supplies	Total
2718	Griswold	0	0	0	0	0
2727	Grundy Center	22,989	11,834	0	0	34,823
2754	Guthrie Center	23,425	13,357	4	21	36,807
2763	Clayton Ridge	28,565	4,736	0	0	33,301
2766	H-L-V	15,388	3,059	0	0	18,447
2772	Hamburg	13,952	2,313	0	0	16,265
2781	Hampton-Dumont	59,624	26,105	0	0	85,729
2826	Harlan	74,095	14,309	0	0	88,403
2834	Harmony	19,510	3,236	0	0	22,745
2846	Harris-Lake Park	19,345	5,209	0	0	24,554
2862	Hartley-Melvin-Sanborn	26,000	8,966	0	0	34,966
2977	Highland	35,615	7,082	450	235	43,382
2988	Hinton	26,635	8,576	0	0	35,211
3029	Howard-Winneshiek	50,043	23,944	0	0	73,987
3033	Hubbard-Radcliffe	18,565	3,026	0	0	21,591
3042	Hudson	29,785	3,964	0	0	33,749
3060	Humboldt	53,428	23,278	0	0	76,706
3105	Independence	65,173	19,226	0	0	84,399
3114	Indianola	111,944	33,900	0	0	145,844
3119	Interstate 35	20,923	6,679	0	0	27,602
3141	Iowa City	613,303	161,236	0	40,623	815,162
3150	Iowa Falls	59,067	14,295	0	0	73,362
3154	Iowa Valley	38,125	11,437	0	0	49,562
3168	IKM-Manning	32,453	10,464	0	0	42,917
3186	Janesville Consolidated	12,882	2,136	0	0	15,018
3195	Greene County	52,827	22,108	0	0	74,935
3204	Jesup	43,666	13,411	0	0	57,077

District	District Name	Salaries	Benefits	Purchased Services	Supplies	Total
3231	Johnston	255,359	72,635	0	0	327,994
3312	Keokuk	96,867	36,147	0	0	133,014
3330	Keota	9,547	8,739	0	0	18,286
3348	Kingsley-Pierson	25,529	4,462	0	84	30,075
3375	Knoxville	87,065	27,374	0	0	114,439
3420	Lake Mills	33,544	5,562	0	0	39,106
3465	Lamoni	16,047	5,915	0	0	21,962
3537	Laurens-Marathon	4,570	14,876	0	0	19,446
3555	Lawton-Bronson	22,335	10,071	0	0	32,406
3600	Le Mars	83,883	30,604	0	0	114,487
3609	Lenox	23,200	8,422	0	0	31,622
3645	Lewis Central	164,104	29,895	0	0	193,998
3691	North Cedar	35,739	11,506	0	0	47,245
3715	Linn-Mar	314,159	52,677	0	0	366,836
3744	Lisbon	28,363	3,506	0	0	31,869
3798	Logan-Magnolia	28,361	5,637	0	0	33,998
3816	Lone Tree	19,199	6,955	0	0	26,154
3841	Louisa-Muscatine	33,297	5,659	0	0	38,955
3897	LuVerne	0	0	0	426	426
3906	Lynnvile-Sully	17,415	5,857	0	0	23,272
3942	Madrid	30,647	11,454	0	0	42,101
3978	East Mills	24,929	6,913	0	0	31,842
4023	Manson Northwest Webster	25,489	4,226	0	0	29,715
4033	Maple Valley-Anthon Oto	31,277	5,186	0	0	36,463
4041	Maquoketa	62,635	29,513	0	0	92,148
4043	Maquoketa Valley	27,071	14,092	0	0	41,163

District	District Name	Salaries	Benefits	Purchased Services	Supplies	Total
4068	Marcus-Meriden-Cleghorn	14,126	5,745	0	0	19,871
4086	Marion Independent	107,445	17,441	0	0	124,886
4104	Marshalltown	342,436	85,883	0	0	428,319
4122	Martensdale-St Marys	18,321	7,059	0	0	25,380
4131	Mason City	186,886	74,716	0	0	261,602
4149	MOC-Floyd Valley	60,879	18,819	0	0	79,698
4203	Mediapolis	31,659	12,139	0	0	43,798
4212	Melcher-Dallas	6,220	1,066	0	0	7,287
4269	Midland	28,364	4,703	0	0	33,067
4271	Mid-Prairie	52,432	8,808	0	0	61,240
4356	Missouri Valley	36,181	15,501	0	0	51,682
4419	MFL MarMac	24,999	28,489	0	0	53,488
4437	Montezuma	25,210	8,699	0	0	33,909
4446	Monticello	91,458	35,467	0	5,547	132,473
4491	Moravia	19,433	7,168	0	0	26,601
4505	Mormon Trail	13,193	2,187	0	0	15,380
4509	Morning Sun	15,211	2,522	0	0	17,733
4518	Moulton-Udell	10,545	4,783	0	0	15,328
4527	Mount Ayr	36,937	6,123	0	0	43,060
4536	Mount Pleasant	114,089	26,967	0	0	141,056
4554	Mount Vernon	54,515	15,109	0	0	69,624
4572	Murray	29,917	8,304	0	0	38,221
4581	Muscatine	257,788	105,573	0	0	363,361
4599	Nashua-Plainfield	24,213	8,479	0	0	32,692
4617	Nevada	83,388	23,259	0	0	106,647
4644	Newell-Fonda	23,060	8,873	0	0	31,933
4662	New Hampton	40,105	6,649	0	0	46,754

District	District Name	Salaries	Benefits	Purchased Services	Supplies	Total
4689	New London	27,437	6,557	0	0	33,994
4725	Newton	144,492	58,887	0	0	203,379
4772	Central Springs	36,952	11,681	0	0	48,633
4773	Northeast	32,741	5,428	0	0	38,169
4774	North Fayette	39,938	6,622	0	0	46,560
4775	Northeast Hamilton	9,939	3,969	0	0	13,908
4776	North Mahaska	24,458	13,100	0	0	37,558
4777	North Linn	31,936	4,612	0	0	36,548
4778	North Kossuth	7,408	8,620	0	0	16,028
4779	North Polk	43,823	15,246	0	916	59,985
4784	North Scott	112,303	52,140	0	0	164,443
4785	North Tama County	22,986	7,531	0	96	30,613
4787	North Winneshiek	13,440	5,331	0	0	18,771
4788	Northwood-Kensett	21,538	3,577	0	0	25,115
4797	Norwalk	114,205	18,935	0	0	133,140
4860	Odebolt-Arthur	19,386	6,070	0	0	25,456
4869	Oelwein	61,644	18,861	0	0	80,505
4878	Ogden	33,119	3,845	0	0	36,964
4890	Okoboji	47,048	8,429	0	0	55,477
4905	Olin Consolidated	12,900	2,105	0	0	15,005
4978	Orient-Macksburg	7,930	1,315	0	469	9,714
4995	Osage	30,292	21,563	0	0	51,855
5013	Oskaloosa	132,626	28,874	0	0	161,500
5049	Ottumwa	302,953	47,801	0	0	350,754
5121	Panorama	27,678	11,865	0	0	39,543
5139	Paton-Churdan	11,813	0	0	0	11,813
5160	PCM	46,915	15,895	0	0	62,810
5163	Pekin	26,339	11,824	0	0	38,163

District	District Name	Salaries	Benefits	Purchased Services	Supplies	Total
5166	Pella	92,473	33,075	0	0	125,548
5184	Perry	113,449	36,725	0	0	150,174
5250	Pleasant Valley	156,189	56,538	0	0	212,727
5256	Pleasantville	34,942	9,617	0	0	44,559
5283	Pocahontas Area	33,932	5,626	0	0	39,558
5310	Postville	34,433	12,289	0	0	46,722
5325	Prairie Valley	20,935	16,607	0	162	37,704
5328	Prescott	4,110	681	0	0	4,791
5463	Red Oak	75,671	12,546	0	0	88,217
5486	Remsen-Union	17,408	2,887	0	0	20,295
5508	Riceville	6,314	3,444	0	0	9,758
5510	Riverside	30,679	5,136	0	0	35,815
5607	Rock Valley	38,296	14,194	0	0	52,490
5625	Rockwell City-Lytton	20,295	11,654	0	26	31,975
5643	Roland-Story	48,689	7,623	0	0	56,312
5697	Rudd-Rockford-Marble	19,884	7,295	0	0	27,179
5724	Ruthven-Ayrshire	12,412	4,913	0	0	17,325
5751	St Ansgar	26,745	9,805	0	0	36,550
5805	Saydel	63,176	25,172	0	0	88,348
5823	Schaller-Crestland	8,523	12,015	0	0	20,538
5832	Schleswig	14,201	2,355	0	0	16,556
5868	Sentral	13,490	0	0	0	13,490
5877	Sergeant Bluff-Luton	61,115	23,206	0	0	84,321
5895	Seymour	12,231	5,372	0	0	17,603
5922	West Fork CSD	31,429	6,113	0	0	37,542
5949	Sheldon	45,903	15,884	0	0	61,787
5976	Shenandoah	48,206	22,009	0	0	70,215
5994	Sibley-Ocheyedan	40,400	8,304	0	0	48,704

District	District Name	Salaries	Benefits	Purchased Services	Supplies	Total
6003	Sidney	19,291	3,199	0	0	22,490
6012	Sigourney	24,680	8,658	0	0	33,338
6030	Sioux Center	63,414	13,775	0	0	77,189
6035	Sioux Central	37,874	14,126	0	0	52,000
6039	Sioux City	734,289	331,052	0	0	1,065,341
6091	South Central Calhoun	20,977	7,434	0	0	28,411
6093	Solon	45,155	12,641	0	0	57,796
6094	Southeast Warren	17,442	6,954	0	2,137	26,533
6095	South Hamilton	31,848	12,011	0	0	43,859
6096	Southeast Webster Grand	27,829	10,222	0	0	38,051
6097	South Page	9,162	1,519	0	0	10,681
6098	South Tama County	76,213	29,542	0	0	105,755
6099	South O'Brien	27,327	7,813	0	0	35,140
6100	South Winneshiek	18,300	8,488	0	35	26,823
6101	Southeast Polk	266,046	70,982	0	0	337,028
6102	Spencer	53,641	19,191	0	0	72,832
6120	Spirit Lake	52,989	16,842	0	0	69,831
6138	Springville	15,366	3,054	0	0	18,420
6165	Stanton	6,562	4,465	0	0	11,027
6175	Starmont	31,896	13,576	0	0	45,472
6219	Storm Lake	117,896	49,579	0	0	167,475
6246	Stratford	3,209	5,735	0	0	8,944
6264	West Central Valley	43,186	10,680	0	0	53,866
6273	Sumner-Fredericksburg	21,842	7,361	0	0	29,203
6408	Tipton	38,129	12,880	0	0	51,009
6417	Titonka Consolidated	6,042	1,201	0	0	7,242
6453	Treynor	24,894	9,686	0	0	34,580

District	District Name	Salaries	Benefits	Purchased Services	Supplies	Total
6460	Tri-Center	30,930	7,992	0	0	38,922
6462	Tri-County	17,091	2,486	0	0	19,577
6471	Tripoli	20,457	6,913	0	0	27,370
6509	Turkey Valley	14,757	2,447	0	0	17,204
6512	Twin Cedars	19,854	7,485	0	0	27,339
6516	Twin Rivers	8,286	1,374	0	0	9,660
6534	Underwood	19,834	20,846	0	0	40,680
6536	Union	51,078	17,851	0	0	68,929
6561	United	0	0	0	0	0
6579	Urbandale	150,237	48,615	1,000	3,999	203,851
6591	Valley	13,388	4,744	0	0	18,132
6592	Van Buren	29,063	11,982	0	0	41,045
6615	Van Meter	20,551	13,917	0	0	34,468
6633	Ventura	14,695	304	0	0	14,999
6651	Villisca	23,522	0	0	0	23,522
6660	Vinton-Shellsburg	69,144	28,100	0	0	97,244
6700	Waco	20,112	3,363	0	0	23,474
6741	East Sac County	59,126	0	0	0	59,126
6750	Walnut	7,431	5,413	0	0	12,844
6759	Wapello	25,946	24,941	0	77	50,964
6762	Wapsie Valley	31,813	3,414	0	0	35,227
6768	Washington	141,053	37,395	0	0	178,449
6795	Waterloo	578,911	208,031	0	0	786,942
6822	Waukee	405,736	67,271	0	0	473,007
6840	Waverly-Shell Rock	82,568	19,992	0	0	102,560
6854	Wayne	33,248	5,802	0	0	39,050
6867	Webster City	77,556	28,060	0	0	105,616
6921	West Bend-Mallard	15,040	2,494	0	0	17,534

District	District Name	Salaries	Benefits	Purchased Services	Supplies	Total
6930	West Branch	36,717	5,603	0	0	42,320
6937	West Burlington Ind	45,532	7,261	0	0	52,793
6943	West Central	13,894	1,879	0	0	15,773
6950	West Delaware County	78,490	10,896	0	0	89,386
6957	West Des Moines	387,294	115,277	0	0	502,571
6961	Western Dubuque	120,251	56,595	0	0	176,846
6969	West Harrison	14,168	6,315	0	0	20,483
6975	West Liberty	63,251	27,197	0	0	90,448
6983	West Lyon	27,008	21,225	0	0	48,233
6985	West Marshall	46,944	7,558	0	0	54,502
6987	West Monona	33,506	9,713	0	0	43,219
6990	West Sioux	37,856	10,903	0	0	48,759
6992	Westwood	22,677	11,809	0	0	34,486
7002	Whiting	8,581	7,576	0	0	16,157
7029	Williamsburg	42,155	13,423	0	0	55,578
7038	Wilton	35,542	11,633	0	0	47,175
7047	Winfield-Mt Union	21,996	3,647	0	0	25,643
7056	Winterset	82,256	31,180	0	0	113,436
7092	Woodbine	24,003	5,085	0	0	29,088
7098	Woodbury Central	30,244	5,014	0	0	35,258
7110	Woodward-Granger	41,744	6,921	0	0	48,665
	State Totals	23,448,577	7,443,860	22,152	56,855	30,971,444

**APPENDIX E. IOWA PUBLIC SCHOOL DISTRICTS' EARLY INTERVENTION
BLOCK GRANT PROGRAM ALLOCATIONS**

District Number	District Name	10-11	11-12	12-13	13-14	14-15
9	AGWSR	31,641	31,641	31,704	31,704	31,903
18	Adair-Casey	21,707	21,707	21,913	22,574	22,574
27	Adel DeSoto Minburn	81,054	81,054	84,361	87,670	92,799
63	Akron Westfield	31,750	31,994	31,994	31,839	33,701
72	Albert City- Truesdale	8,093	7,965	7,464	7,983	8,096
81	Albia	64,320	65,252	66,598	67,443	70,507
99	Alburnett	26,537	26,172	26,757	27,965	28,684
108	Alden	18,109	18,245	18,474	18,750	19,159
126	Algona	67,275	67,275	67,456	67,917	77,214
135	Allamakee	73,306	73,306	71,629	72,389	73,592
153	North Butler	30,829	31,193	32,634	34,014	37,006
171	Alta	37,075	36,302	37,794	38,243	40,117
225	Ames	241,749	241,749	239,602	245,265	257,344
234	Anamosa	72,043	72,043	71,513	70,844	74,596
243	Andrew	20,409	20,175	19,712	19,771	20,406
261	Ankeny	434,238	450,326	477,771	512,304	566,191
279	Aplington- Parkersburg	54,622	56,180	59,895	61,474	61,474
333	North Union	22,190	20,867	20,371	20,698	34,047
355	Ar-We-Va	17,523	17,238	15,936	16,361	16,361
387	Atlantic	97,240	97,559	100,497	102,531	106,625

District Number	District Name	10-11	11-12	12-13	13-14	14-15
414	Audubon	32,477	32,211	30,728	29,723	30,520
423	Aurelia	16,379	16,379	15,299	15,557	15,557
441	A-H-S-T	31,683	31,653	30,360	30,523	32,270
472	Ballard	87,349	89,177	90,680	93,887	101,667
504	Battle Creek-Ida Grove	39,798	39,829	40,891	41,777	43,561
513	Baxter	21,562	23,229	23,229	22,601	22,498
540	BCLUW	32,369	31,757	32,404	32,544	33,813
549	Bedford	33,665	34,027	34,027	33,411	32,721
576	Belle Plaine	29,224	29,224	29,326	29,407	29,893
585	Bellevue	31,544	31,329	30,699	31,034	33,147
594	Belmond-Klemme	45,204	45,600	47,258	49,735	53,813
603	Bennett	11,580	11,580	11,081	11,682	12,085
609	Benton	80,286	80,286	79,333	78,301	82,280
621	Bettendorf	228,616	228,616	234,236	236,194	244,585
657	Eddyville Blakesburg	62,561	60,143	59,857	62,162	62,363
720	Bondurant-Farrar	73,022	77,538	82,252	88,618	100,574
729	Boone	125,530	127,537	130,852	133,040	136,089
747	Boyden-Hull	41,461	41,476	43,276	44,205	44,354
819	West Hancock	35,815	36,708	38,167	38,167	37,581
846	Brooklyn-Guernsey-Malcom	30,725	31,307	31,307	30,833	32,856
873	North Iowa	28,879	28,006	27,190	26,670	27,687
882	Burlington	314,991	314,991	320,419	333,642	344,306

District Number	District Name	10-11	11-12	12-13	13-14	14-15
914	CAM	26,789	26,789	26,528	25,756	27,134
916	CAL	18,008	17,783	18,363	18,603	18,603
918	Calamus-Wheatland	31,614	31,334	31,205	31,405	31,406
936	Camanche	60,665	60,159	60,533	60,533	62,325
977	Cardinal	41,338	41,273	41,700	41,700	43,176
981	Carlisle	104,491	106,589	108,417	111,009	119,390
999	Carroll	95,921	96,274	98,648	99,165	102,635
1044	Cedar Falls	259,964	277,627	285,163	296,217	308,650
1053	Cedar Rapids	1,102,801	1,087,558	1,098,765	1,111,794	1,169,904
1062	Center Point-Urbana	74,237	75,145	76,000	78,081	81,556
1071	Centerville	91,487	90,464	87,213	88,326	91,064
1079	Central Lee	50,299	50,299	48,567	49,848	50,151
1080	Central	26,849	26,806	25,429	25,682	26,625
1082	Central Clinton	79,734	80,575	80,986	80,986	84,238
1089	Central City	29,225	29,237	29,838	31,029	31,629
1093	Central Decatur	47,899	48,599	48,599	50,257	52,756
1095	Central Lyon	36,050	36,713	37,366	37,366	38,690
1107	Chariton	103,903	102,710	99,225	98,312	100,542
1116	Charles City	91,144	90,773	92,459	96,283	101,000
1134	Charter Oak-Ute	21,363	21,363	21,093	21,093	20,669
1152	Cherokee	61,155	60,587	59,241	62,185	65,751
1197	Clarinda	51,210	50,426	51,312	52,390	54,360

District Number	District Name	10-11	11-12	12-13	13-14	14-15
1206	Clarion-Goldfield-Dows	56,004	52,439	51,053	53,562	64,867
1211	Clarke	90,115	91,987	94,719	99,918	104,553
1215	Clarksville	24,436	24,436	23,351	23,351	23,733
1218	Clay Central-Everly	21,303	21,303	21,794	21,794	22,279
1221	Clear Creek Amana	71,504	75,630	78,147	84,986	96,082
1233	Clear Lake	74,591	71,691	72,538	72,709	74,388
1278	Clinton	289,286	289,286	285,197	285,197	286,375
1332	Colfax-Mingo	48,796	47,149	45,629	45,401	46,576
1337	College	263,703	272,798	286,252	295,915	315,696
1350	Collins-Maxwell	30,125	30,125	29,555	29,555	30,697
1359	Colo-NESCO School	28,372	28,372	28,360	30,169	33,206
1368	Columbus	66,468	66,468	63,040	61,291	58,788
1413	Coon Rapids-Bayard	31,072	31,072	28,962	28,844	28,683
1431	Corning	32,840	32,840	31,577	30,796	31,468
1449	Corwith-Wesley	10,050	9,834	9,453	9,057	9,057
1476	Council Bluffs	679,186	679,186	677,648	682,473	709,777
1503	Creston	87,850	87,331	94,272	96,646	101,610
1576	Dallas Center-Grimes	107,290	110,426	114,894	126,762	138,961
1602	Danville	30,601	30,601	30,758	31,646	33,052
1611	Davenport	1,179,598	1,187,523	1,203,871	1,210,021	1,254,676
1619	Davis County	65,696	66,076	68,239	69,913	72,185

District Number	District Name	10-11	11-12	12-13	13-14	14-15
1638	Decorah Community	78,759	79,770	79,770	82,421	84,564
1675	Delwood	14,363	14,363	13,484	13,155	13,598
1701	Denison	137,215	142,892	149,459	154,814	158,520
1719	Denver	33,112	32,857	34,502	34,607	35,556
1737	Des Moines Independent	2,546,887	2,548,623	2,635,062	2,719,187	2,833,238
1782	Diagonal	8,454	8,454	9,624	10,922	10,922
1791	Dike-New Hartford	40,162	40,864	43,284	45,544	49,651
1863	Dubuque	672,099	672,099	670,905	687,149	718,922
1908	Dunkerton	28,750	28,750	28,489	29,487	29,914
1917	Boyer Valley	29,180	29,180	29,488	29,996	30,397
1926	Durant	31,562	31,562	31,910	31,910	33,025
1944	Eagle Grove	53,673	52,151	54,653	55,800	57,906
1953	Earlham	39,098	39,449	39,449	39,594	43,027
1963	East Buchanan	31,891	31,593	33,164	33,962	35,534
1965	Easton Valley	36,814	36,661	36,906	36,116	36,883
1968	East Marshall	43,927	43,814	43,524	42,739	42,739
1970	East Union	32,618	32,618	31,002	32,473	35,461
1972	Eastern Allamakee	28,692	28,692	26,561	26,051	26,099
1975	River Valley	31,317	30,868	30,258	29,820	31,080
1989	Edgewood-Colesburg	32,137	31,795	31,795	31,572	29,999
2007	Eldora-New Providence	38,757	39,352	39,702	41,299	41,999
2088	Emmetsburg	41,290	42,176	42,176	42,126	43,947

District Number	District Name	10-11	11-12	12-13	13-14	14-15
2097	English Valleys	34,781	34,781	34,503	32,747	31,992
2113	Essex	21,028	20,949	20,358	20,107	21,504
2124	Estherville Lincoln	89,580	89,580	90,964	92,125	97,464
2151	Exira-Elk Horn-Kimballton	14,335	14,095	13,080	12,686	27,696
2169	Fairfield	104,988	104,385	104,071	105,201	107,382
2205	Farragut	14,303	13,771	12,685	12,685	12,262
2295	Forest City	81,212	75,533	73,991	71,737	72,116
2313	Fort Dodge	268,607	263,817	258,336	265,950	276,945
2322	Fort Madison	144,076	139,663	138,174	142,307	145,466
2369	Fremont-Mills	30,288	29,088	28,386	30,521	31,852
2376	Galva-Holstein	26,236	26,308	26,308	27,373	29,838
2403	Garner-Hayfield	47,744	49,141	49,919	51,614	54,728
2457	George-Little Rock	28,710	28,710	28,524	28,524	28,546
2466	Gilbert	50,918	52,722	57,211	60,304	64,897
2493	Gilmore City-Bradgate	6,277	5,711	5,919	5,993	5,993
2502	Gladbrook-Reinbeck	31,375	31,014	30,040	29,897	30,983
2511	Glenwood	124,723	125,903	125,903	126,084	127,256
2520	Glidden-Ralston	20,817	20,770	20,045	19,721	18,930
2556	Graettinger-Terril	24,044	22,901	23,105	23,105	23,906
2673	Nodaway Valley	42,255	42,165	42,613	42,613	44,560
2682	GMG	25,479	25,479	23,555	23,567	24,218
2709	Grinnell-Newburg	104,510	104,510	107,584	107,584	106,652

District Number	District Name	10-11	11-12	12-13	13-14	14-15
2718	Griswold	31,907	31,907	30,472	31,616	32,064
2727	Grundy Center	32,705	32,705	34,823	34,823	35,702
2754	Guthrie Center	34,848	33,396	32,064	31,511	32,648
2763	Clayton Ridge	32,891	32,797	33,301	33,301	34,477
2766	H-L-V	20,096	20,096	19,121	18,447	19,351
2772	Hamburg	17,429	15,489	15,489	16,265	16,265
2781	Hampton-Dumont	82,329	82,329	81,568	85,729	90,202
2826	Harlan	89,751	86,866	86,147	88,403	90,632
2834	Harmony	25,378	24,521	22,346	22,745	22,924
2846	Harris-Lake Park	20,997	21,802	23,097	24,554	25,679
2862	Hartley-Melvin-Sanborn	35,308	35,308	33,892	34,966	35,869
2977	Highland	42,358	42,358	41,693	43,382	44,406
2988	Hinton	35,615	35,615	35,225	35,211	37,748
3029	Howard-Winnesiek	75,390	75,719	75,719	75,603	77,618
3033	Hubbard-Radcliffe	19,656	19,656	19,763	21,591	23,238
3042	Hudson	31,351	31,351	31,581	33,749	34,418
3060	Humboldt	73,867	73,867	75,157	76,706	81,445
3105	Independence	82,352	82,352	82,661	84,399	88,633
3114	Indianola	172,061	172,182	178,846	186,392	194,878
3119	Interstate 35	46,654	46,750	48,681	50,805	51,863
3141	Iowa City	734,321	740,946	783,817	820,372	879,345
3150	Iowa Falls	68,741	68,741	71,672	73,362	76,223
3154	Iowa Valley	29,249	28,901	27,488	27,309	28,287

District Number	District Name	10-11	11-12	12-13	13-14	14-15
3168	IKM-Manning	46,213	45,144	43,087	42,917	43,306
3186	Janesville Consolidated	13,882	14,729	14,754	15,018	16,675
3195	Greene County	75,565	74,094	74,935	74,935	89,655
3204	Jesup	54,383	54,383	55,470	57,077	58,115
3231	Johnston	297,351	303,435	313,779	327,994	351,982
3312	Keokuk	138,880	134,164	128,883	133,014	136,302
3330	Keota	17,140	17,111	17,008	18,286	19,399
3348	Kingsley-Pierson	32,155	32,640	33,017	33,135	33,940
3375	Knoxville	116,957	116,957	114,629	114,439	117,034
3420	Lake Mills	39,509	39,509	38,504	39,106	41,881
3465	Lamoni	21,244	21,932	21,962	21,962	21,824
3537	Laurens-Marathon	20,309	20,309	19,516	19,446	19,609
3555	Lawton-Bronson	30,036	31,160	31,449	32,406	33,051
3600	Le Mars	111,859	111,691	110,371	114,487	119,619
3609	Lenox	28,804	29,198	31,591	31,622	36,631
3645	Lewis Central	193,913	195,953	196,696	201,185	204,256
3691	North Cedar	48,196	48,196	47,245	47,245	48,622
3715	Linn-Mar	335,244	337,454	350,214	366,836	388,253
3744	Lisbon	29,175	29,908	30,114	31,869	34,674
3798	Logan-Magnolia	36,007	35,894	34,944	33,998	34,536
3816	Lone Tree	26,959	26,959	27,459	28,664	28,664
3841	Louisa-Muscatine	46,383	46,383	45,185	45,697	48,351
3897	LuVerne	216	216	294	426	624

District Number	District Name	10-11	11-12	12-13	13-14	14-15
3906	Lynnvile-Sully	23,316	23,166	23,246	23,272	24,237
3942	Madrid	37,726	39,022	40,241	42,101	42,204
3978	East Mills	30,931	30,931	31,450	31,842	32,630
4023	Manson Northwest Webster	28,497	27,809	27,923	29,715	33,288
4033	Maple Valley Anthon Oto	38,560	37,481	36,454	36,463	37,054
4041	Maquoketa	94,405	94,307	92,103	92,148	93,992
4043	Maquoketa Valley	42,423	41,349	40,452	41,163	41,335
4068	Marcus-Meriden-Cleghorn	19,546	19,546	19,177	19,871	20,196
4086	Marion Independent	117,113	119,175	122,479	124,886	129,678
4104	Marshalltown	407,003	407,003	422,406	428,319	448,808
4122	Martensdale-St Marys	28,281	28,281	29,246	29,992	31,321
4131	Mason City	262,710	262,710	259,895	261,602	269,445
4149	MOC-Floyd Valley	76,691	78,952	78,952	79,698	85,296
4203	Mediapolis	44,583	43,101	43,798	43,798	42,201
4212	Melcher-Dallas	25,140	23,379	22,141	24,006	24,746
4269	Midland	32,722	32,439	31,623	33,067	34,448
4271	Mid-Prairie	70,266	70,266	69,496	73,839	78,498
4356	Missouri Valley	51,275	50,501	48,876	51,682	52,867
4419	MFL MarMac	54,877	53,120	53,488	53,488	55,205
4437	Montezuma	32,583	32,456	33,208	33,909	36,806
4446	Monticello	51,717	53,398	54,233	56,269	59,205

District Number	District Name	10-11	11-12	12-13	13-14	14-15
4491	Moravia	24,671	25,775	26,601	26,601	28,130
4505	Mormon Trail	16,672	15,250	15,380	15,380	16,358
4509	Morning Sun	17,403	17,403	16,968	17,733	18,381
4518	Moulton-Udell	14,648	14,248	13,833	15,328	16,472
4527	Mount Ayr	41,434	41,298	41,654	43,060	45,562
4536	Mount Pleasant	140,281	139,822	139,762	141,056	141,728
4554	Mount Vernon	67,347	68,077	68,384	69,624	74,500
4572	Murray	21,986	21,986	20,865	21,749	21,749
4581	Muscatine	361,863	361,863	362,463	368,898	385,919
4599	Nashua-Plainfield	32,959	32,692	32,378	32,692	34,072
4617	Nevada	102,239	103,060	107,157	108,531	115,605
4644	Newell-Fonda	28,498	30,919	31,933	31,933	34,615
4662	New Hampton	46,874	46,302	46,302	46,754	48,329
4689	New London	33,924	33,858	33,858	33,994	35,621
4725	Newton	208,774	208,559	202,033	203,379	210,970
4772	Central Springs	49,176	49,115	47,531	48,633	49,612
4773	Northeast	36,633	36,633	36,633	38,169	39,230
4774	North Fayette	47,566	47,177	47,177	46,560	49,022
4775	Northeast Hamilton	14,607	15,128	15,128	13,908	13,908
4776	North Mahaska	35,751	36,325	36,325	37,558	37,558
4777	North Linn	38,729	38,729	37,747	36,548	38,736
4778	North Kossuth	17,001	17,001	15,513	16,028	16,074
4779	North Polk	57,500	58,583	61,696	66,448	72,804

District Number	District Name	10-11	11-12	12-13	13-14	14-15
4784	North Scott	156,855	156,855	161,067	164,443	170,476
4785	North Tama County	30,252	30,252	29,840	30,613	30,613
4787	North Winneshiek	18,730	18,730	18,126	18,771	19,487
4788	Northwood-Kensett	25,599	25,599	24,692	25,115	27,466
4797	Norwalk	121,546	124,733	127,449	133,140	144,201
4860	Odebolt-Arthur	16,633	16,284	16,648	17,044	17,764
4869	Oelwein	81,364	77,856	80,505	80,505	82,465
4878	Ogden	39,010	39,010	37,000	36,964	37,494
4890	Okoboji	49,982	49,982	51,043	55,477	56,583
4905	Olin Consolidated	14,285	14,480	14,480	15,005	15,970
4978	Orient-Macksburg	9,830	9,830	9,714	9,714	10,254
4995	Osage	50,709	49,964	50,284	51,855	54,438
5013	Oskaloosa	158,069	158,069	158,968	161,500	170,174
5049	Ottumwa	327,969	327,969	326,888	335,988	351,315
5121	Panorama	40,221	39,612	38,733	39,543	40,267
5139	Paton-Churdan	12,639	12,639	11,800	11,813	13,058
5160	PCM	54,881	55,271	55,512	57,305	62,527
5163	Pekin	41,284	40,156	38,067	38,163	39,374
5166	Pella	121,930	122,017	123,854	125,548	127,743
5184	Perry	145,789	145,789	144,810	150,174	153,974
5250	Pleasant Valley	172,366	180,733	194,075	212,727	226,824
5256	Pleasantville	45,170	43,645	42,916	44,559	46,584
5283	Pocahontas Area	40,645	39,086	39,031	39,558	41,428

District Number	District Name	10-11	11-12	12-13	13-14	14-15
5310	Postville	49,305	48,085	47,696	51,910	57,985
5325	Prairie Valley	38,890	38,494	37,704	37,704	37,146
5328	Prescott	4,872	4,788	4,788	4,791	4,791
5463	Red Oak	89,358	88,622	87,103	88,217	88,304
5486	Remsen-Union	20,090	19,524	19,520	20,295	21,114
5508	Riceville	16,047	15,861	15,794	17,024	18,398
5510	Riverside	33,967	33,967	35,049	35,815	39,479
5607	Rock Valley	43,656	44,983	49,712	52,490	53,246
5643	Roland-Story	55,322	55,322	53,884	56,312	59,482
5697	Rudd-Rockford-Marble Rk	28,842	28,296	26,920	27,179	27,281
5724	Ruthven-Ayrshire	16,808	17,761	17,761	17,325	17,783
5751	St Ansgar	36,178	35,981	35,166	36,550	37,540
5805	Saydel	87,642	86,985	86,789	88,348	88,509
5823	Schaller-Crestland	19,813	19,813	19,640	20,538	21,368
5832	Schleswig	16,086	16,086	16,556	16,556	16,528
5877	Sergeant Bluff-Luton	82,990	83,177	83,177	84,321	88,675
5895	Seymour	17,253	16,809	17,336	17,603	20,247
5922	West Fork CSD	38,896	38,788	38,788	37,542	37,780
5949	Sheldon	61,988	61,988	60,768	61,787	66,148
5976	Shenandoah	69,573	71,866	71,866	70,215	71,990
5994	Sibley-Ocheyedan	49,108	47,779	46,911	48,704	51,748
6003	Sidney	23,808	23,808	22,585	22,490	22,324
6012	Sigourney	34,199	34,199	33,764	33,338	34,015

District Number	District Name	10-11	11-12	12-13	13-14	14-15
6030	Sioux Center	69,780	71,029	73,437	77,189	83,948
6035	Sioux Central	31,645	32,943	32,943	32,466	34,199
6039	Sioux City	1,042,263	1,042,263	1,051,447	1,081,796	1,134,250
6091	South Central Calhoun	28,588	28,588	28,411	28,411	59,751
6093	Solon	53,691	54,251	55,895	57,796	61,060
6094	Southeast Warren	29,295	29,295	28,406	29,567	31,635
6095	South Hamilton	43,961	43,961	43,859	43,859	44,956
6096	Southeast Webster Grand	38,072	38,024	38,051	38,051	40,117
6097	South Page	10,699	10,699	10,530	10,681	10,681
6098	South Tama County	108,262	104,989	104,989	104,782	108,917
6099	South O'Brien	32,229	33,170	34,704	35,140	37,589
6100	South Winneshiek	26,945	26,945	26,823	26,823	27,396
6101	Southeast Polk	317,522	322,661	337,296	355,567	384,839
6102	Spencer	113,642	115,917	118,243	121,787	127,230
6120	Spirit Lake	68,511	67,187	69,831	69,831	71,987
6138	Springville	19,988	19,876	18,713	18,420	19,200
6165	Stanton	11,826	11,612	11,496	11,027	11,374
6175	Starmont	47,154	47,154	44,785	45,472	45,780
6219	Storm Lake	156,035	156,035	165,671	167,475	180,138
6246	Stratford	11,042	10,507	9,450	8,944	9,448
6264	West Central Valley	53,457	53,457	53,839	53,866	56,324

District Number	District Name	10-11	11-12	12-13	13-14	14-15
6273	Sumner-Fredericksburg	27,362	27,776	28,111	29,203	48,751
6408	Tipton	47,684	48,787	49,359	51,009	55,768
6453	Treynor	33,177	33,194	33,942	34,580	35,172
6460	Tri-Center	38,914	37,947	37,998	38,922	41,033
6462	Tri-County	21,749	20,495	19,979	19,577	19,577
6471	Tripoli	28,225	27,902	27,436	27,370	27,570
6509	Turkey Valley	19,237	18,663	17,509	17,204	17,204
6512	Twin Cedars	28,468	27,984	27,936	27,339	27,559
6516	Twin Rivers	9,560	10,107	10,107	9,660	10,458
6534	Underwood	41,230	41,230	40,506	40,680	40,933
6536	Union	69,091	69,091	68,704	68,929	72,172
6561	United	20,437	20,659	20,659	20,146	21,799
6579	Urbandale	190,393	193,726	195,104	203,851	211,954
6591	Valley	27,608	27,608	26,709	26,709	25,223
6592	Van Buren	44,657	44,657	43,533	41,045	41,838
6615	Van Meter	32,869	32,869	33,438	34,468	35,264
6633	Ventura	15,705	15,246	15,246	14,999	13,457
6651	Villisca	23,980	23,636	23,522	23,522	22,648
6660	Vinton-Shellsburg	101,389	101,389	97,634	97,244	97,472
6700	Waco	31,556	31,905	32,169	32,169	31,962
6741	East Sac County	58,998	58,998	57,890	59,126	62,099
6750	Walnut	13,549	13,438	13,244	12,844	12,397
6759	Wapello	51,307	51,723	51,723	50,964	50,964

District Number	District Name	10-11	11-12	12-13	13-14	14-15
6762	Wapsie Valley	41,736	42,880	42,880	44,303	46,423
6768	Washington	108,694	109,041	111,178	115,223	120,978
6795	Waterloo	758,336	758,336	767,002	786,942	829,259
6822	Waukee	367,016	392,328	426,524	473,007	529,310
6840	Waverly-Shell Rock	93,901	93,901	95,716	102,560	108,521
6854	Wayne	42,017	41,358	39,838	39,050	39,050
6867	Webster City	98,099	102,355	102,845	105,616	108,086
6921	West Bend-Mallard	17,865	17,502	17,534	17,534	18,795
6930	West Branch	42,645	43,311	43,311	45,463	47,505
6937	West Burlington Ind	47,645	47,083	49,425	52,793	53,739
6943	West Central	15,419	15,419	14,896	15,773	15,773
6950	West Delaware County	86,569	87,614	87,906	89,386	91,658
6957	West Des Moines	466,629	473,767	488,088	502,571	523,435
6961	Western Dubuque	159,202	163,751	169,652	176,846	182,875
6969	West Harrison	22,609	22,609	21,187	20,483	20,086
6975	West Liberty	85,751	86,833	90,448	90,448	92,472
6983	West Lyon	40,644	41,984	44,746	48,233	52,170
6985	West Marshall	54,141	54,141	54,502	54,502	56,982
6987	West Monona	39,504	40,964	43,219	43,219	43,838
6990	West Sioux	44,687	44,687	43,403	48,759	51,845
6992	Westwood	35,152	34,484	34,442	34,486	34,486
7002	Whiting	15,333	15,173	14,862	16,157	16,157

District Number	District Name	10-11	11-12	12-13	13-14	14-15
7029	Williamsburg	52,103	52,103	52,524	55,578	58,644
7038	Wilton	48,154	46,771	47,175	47,175	48,425
7047	Winfield-Mt Union	25,105	25,207	25,207	25,643	26,809
7056	Winterset	109,593	110,367	111,461	113,436	118,500
7092	Woodbine	27,812	28,277	29,088	29,088	30,902
7098	Woodbury Central	33,710	33,716	35,042	35,258	35,315
7110	Woodward-Granger	42,827	45,037	47,387	48,665	54,592
Total		29,808,051	29,909,791	30,304,167	31,058,141	32,436,162

Source: Certified Annual Report prior 2009-2010; Department of Management 2009-2010 thru 2014-2015

APPENDIX F. IOWA PUBLIC SCHOOL DISTRICTS' PERCENT PROFICIENT

GRADE 3 READING ASSESSMENT SUMMARY TABLE

Item	2012	2013	2014
Number of Students Enrolled	35,226	35,682	35,656
Number of Students Proficient	26,648	26,831	27,061
Number of Students Not Proficient	8,462	8,622	8,294
Number of Students Not Tested	116	229	289

Item	2012	2013	2014
Percent of Students Proficient	75.9%	75.2%	75.9%
Percent of Students Not Proficient	24.1%	24.2%	23.3%
Percent of Students Not Tested	0.3%	0.6%	0.8%

Districts Improving Proficiency Percentages

Item	2011-2012	2012-2013	2013-2014
Districts Increasing Proficiency %	39.7%	45.6%	54.5%
Districts staying the same	1.1%	0.3%	0.9%

Source: Iowa Department of Education, Adequate Yearly Progress (AYP files)

Note: Percent of Students Proficient uses Full Academic Year Students.

**Iowa Public School Districts
Percent Proficient in Reading**

District	District Name	2013		2014	
		Enrolled	% Proficient	Enrolled	% Proficient
0009	AGWSR	39	75.7	45	71.1
0018	Adair-Casey	34	79.4	28	67.9
0027	Adel DeSoto Minburn	103	83.3	120	85.8
0063	Akron Westfield	38	84.2	39	89.7
0072	Albert City-Truesdale	10	90.0	16	87.5
0081	Albia	83	73.5	86	84.9
0099	Alburnett	41	82.5	42	88.1
0108	Alden	23	69.6	21	
0126	Algona	83	74.7	90	80.0
0135	Allamakee	76	75.0	76	92.1
0153	North Butler	46	84.8	59	78.0
0171	Alta	36	69.4	43	72.1
0225	Ames	376	84.9	311	90.0
0234	Anamosa	79	79.7	84	79.5
0243	Andrew	24	95.8	11	90.9
0261	Ankeny	802	84.3	827	86.8
0279	Aplington-Parkersburg	59	83.1	60	88.3
0333	Armstrong-Ringsted	n/a	n/a	n/a	n/a
0355	Ar-We-Va	14	64.3	15	86.7
0387	Atlantic	109	62.0	3	100.0
0414	Audubon	38	89.5	30	73.3
0423	Aurelia	14	57.1	13	76.9
0441	A-H-S-T	38	63.2	33	75.8
0472	Ballard	108	77.6	118	70.3
0504	Battle Creek-Ida Grove	51	90.2	44	88.6
0513	Baxter	27	74.1	41	75.6
0540	BCLUW	44	88.6	40	75.0
0549	Bedford	33	75.8	28	85.7
0576	Belle Plaine	54	64.8	47	78.7
0585	Bellevue	38	81.6	38	76.3
0594	Belmond-Klemme	69	75.4	58	67.2
0603	Bennett	13	92.3	9	100.0
0609	Benton	117	76.1	100	81.0
0621	Bettendorf	331	84.2	269	85.9
0657	Eddyville-Blakesburg-	74	59.5	62	85.5
0720	Bondurant-Farrar	119	85.7	146	82.9
0729	Boone	125	72.0	127	84.3
0747	Boyden-Hull	53	90.6	46	91.3
0819	West Hancock	51	62.7	46	87.0
0846	Brooklyn-Guernsey- Malcom	32	78.1	42	90.2
0873	North Iowa	35	85.7	28	92.9
0882	Burlington	316	72.3	298	75.5
0914	CAM	40	77.5	49	87.5

District	District Name	2013		2014	
		Enrolled	% Proficient	Enrolled	% Proficient
0916	CAL	20	55.0	20	50.0
0918	Calamus-Wheatland	26	80.8	30	86.7
0936	Camanche	74	75.7	87	81.6
0977	Cardinal	41	51.2	40	47.5
0981	Carlisle	128	81.3	144	77.8
0999	Carroll	128	75.8	138	86.9
1044	Cedar Falls	443	81.4	396	87.9
1053	Cedar Rapids	1197	72.0	1153	72.4
1062	Center Point-Urbana	116	82.8	111	76.6
1071	Centerville	102	84.0	95	76.8
1079	Central Lee	83	71.1	77	77.9
1080	Central	32	93.8	35	80.0
1082	Central Clinton	105	71.4	102	82.4
1089	Central City	33	72.7	34	70.6
1093	Central Decatur	58	81.0	62	75.8
1095	Central Lyon	47	89.4	59	89.8
1107	Chariton	87	73.6	85	78.8
1116	Charles City	103	71.6	107	72.0
1134	Charter Oak-Ute	25	76.0	15	86.7
1152	Cherokee	71	76.1	87	72.4
1197	Clarinda	66	76.9	76	76.3
1206	Clarion-Goldfield	56	91.1	53	69.8
1211	Clarke	90	68.9	111	67.6
1215	Clarksville	22	90.9	19	88.9
1218	Clay Central-Everly	29	93.1	20	80.0
1221	Clear Creek Amana	156	76.9	155	82.6
1224	Clearfield	4	50.0	3	100.0
1233	Clear Lake	93	80.6	97	82.5
1278	Clinton	248	85.1	262	85.9
1332	Colfax-Mingo	52	80.8	44	79.5
1337	College	384	76.9	413	73.3
1350	Collins-Maxwell	34	75.8	27	88.9
1359	Colo-NESCO School	42	59.5	31	80.6
1368	Columbus	58	53.4	50	55.1
1413	Coon Rapids-Bayard	36	69.4	21	85.7
1431	Corning	34	50.0	23	78.3
1449	Corwith-Wesley	n/a	n/a	n/a	n/a
1476	Council Bluffs	646	68.5	678	65.3
1503	Creston	94	59.6	118	79.7
1576	Dallas Center-Grimes	186	84.9	196	91.8
1602	Danville	46	82.6	39	74.4
1611	Davenport	1271	68.7	1204	63.2
1619	Davis County	87	82.8	4	75.0
1638	Decorah Community	127	81.9	127	82.5
1675	Delwood	20	85.0	20	90.0
1701	Denison	150	71.4	145	67.6
1719	Denver	56	75.0	66	86.4

District	District Name	2013		2014	
		Enrolled	% Proficient	Enrolled	% Proficient
1737	Des Moines Independent	2542	61.2	2499	61.4
1782	Diagonal	5	80.0	14	71.4
1791	Dike-New Hartford	54	87.0	63	87.3
1854	Dows	6	66.7	7	57.1
1863	Dubuque	748	73.2	776	72.5
1908	Dunkerton	39	79.5	26	84.6
1917	Boyer Valley	33	63.6	26	65.4
1926	Durant	53	77.4	46	80.4
1944	Eagle Grove	58	63.8	58	70.2
1953	Earlham	49	69.4	34	79.4
1963	East Buchanan	37	94.6	40	72.5
1965	Easton Valley	14	64.3	41	65.9
1967	East Greene	6	83.3	8	62.5
1968	East Marshall	75	81.3	61	80.3
1970	East Union	40	62.5	34	61.8
1972	Eastern Allamakee	32	84.4	20	70.0
1975	River Valley	30	66.7	33	69.7
1989	Edgewood-Colesburg	43	90.7	36	66.7
2007	Eldora-New Providence	41	70.7	42	81.0
2016	Elk Horn-Kimballton	30	83.3	32	90.6
2088	Emmetsburg	58	70.7	55	78.2
2097	English Valleys	38	78.9	34	61.8
2113	Essex	15	80.0	13	76.9
2124	Estherville Lincoln	112	66.1	103	62.1
2151	Exira	n/a	n/a	n/a	n/a
2169	Fairfield	107	83.8	142	78.0
2205	Farragut	4	100.0	14	71.4
2295	Forest City	80	82.1	66	89.4
2313	Fort Dodge	273	71.4	284	63.7
2322	Fort Madison	148	77.7	147	71.2
2349	Fredericksburg	18	77.8	15	86.7
2369	Fremont-Mills	28	75.0	25	68.0
2376	Galva-Holstein	32	90.6	28	96.4
2403	Garner-Hayfield	63	85.7	66	69.7
2457	George-Little Rock	25	84.0	36	86.1
2466	Gilbert	100	88.0	109	93.6
2493	Gilmore City-Bradgate	4	100.0	6	50.0
2502	Gladbrook-Reinbeck	35	91.4	45	82.2
2511	Glenwood	136	82.2	153	83.7
2520	Glidden-Ralston	22	77.3	18	94.4
2556	Graettinger-Terril	20	75.0	28	85.2
2673	Nodaway Valley	52	59.6	41	70.7
2682	GMG	40	82.5	31	87.1
2709	Grinnell-Newburg	120	84.0	110	93.6
2718	Griswold	41	75.6	31	90.3
2727	Grundy Center	60	83.3	51	84.3
2754	Guthrie Center	42	78.6	40	92.5

District	District Name	2013		2014	
		Enrolled	% Proficient	Enrolled	% Proficient
2763	Clayton Ridge	48	91.5	52	88.5
2766	H-L-V	19	73.7	27	84.6
2772	Hamburg	25	66.7	22	59.1
2781	Hampton-Dumont	113	73.9	78	68.8
2826	Harlan	113	74.3	109	67.0
2834	Harmony	25	72.0	27	63.0
2846	Harris-Lake Park	28	89.3	27	92.6
2862	Hartley-Melvin-Sanborn	43	86.0	49	79.6
2977	Highland	52	73.1	55	61.8
2988	Hinton	60	75.0	53	77.4
3029	Howard-Winneshiek	82	64.6	99	68.7
3033	Hubbard-Radcliffe	21	71.4	23	65.2
3042	Hudson	57	77.2	48	70.8
3060	Humboldt	86	81.4	107	87.4
3105	Independence	99	83.8	93	78.5
3114	Indianola	246	74.3	253	83.0
3119	Interstate 35	60	83.3	58	86.2
3141	Iowa City	1031	76.6	992	74.5
3150	Iowa Falls	75	82.4	72	83.3
3154	Iowa Valley	42	78.6	36	91.7
3168	IKM-Manning	53	75.5	42	97.6
3186	Janesville Consolidated	28	89.3	28	60.7
3195	Jefferson-Scranton	72	68.1	80	76.3
3204	Jesup	82	78.0	82	74.4
3231	Johnston	496	91.7	496	90.3
3312	Keokuk	120	75.8	118	75.4
3330	Keota	13	76.9	21	90.5
3348	Kingsley-Pierson	27	88.9	44	90.9
3375	Knoxville	121	78.5	126	74.6
3420	Lake Mills	40	82.1	47	85.1
3465	Lamoni	31	61.3	32	65.6
3537	Laurens-Marathon	14	64.3	22	77.3
3555	Lawton-Bronson	48	85.4	40	92.5
3600	Le Mars	137	85.4	131	87.0
3609	Lenox	34	79.4	36	77.8
3645	Lewis Central	248	65.2	226	63.4
3691	North Cedar	56	69.6	56	75.0
3715	Linn-Mar	531	85.8	532	86.5
3744	Lisbon	32	81.3	52	78.8
3798	Logan-Magnolia	41	92.7	44	81.8
3816	Lone Tree	41	62.5	37	75.7
3841	Louisa-Muscatine	61	85.2	58	84.5
3897	LuVerne	12	83.3	24	79.2
3906	Lynnville-Sully	30	86.7	46	78.3
3942	Madrid	45	91.1	42	81.0
3978	East Mills	29	82.1	38	76.3

District	District Name	2013		2014	
		Enrolled	% Proficient	Enrolled	% Proficient
4023	Manson Northwest Webster	51	68.6	48	87.5
4033	Maple Valley-Anthon Oto	37	83.8	53	81.1
4041	Maquoketa	87	80.5	91	70.3
4043	Maquoketa Valley	51	90.2	44	93.2
4068	Marcus-Meriden-Cleghorn	30	71.4	32	93.8
4086	Marion Independent	160	76.9	180	79.9
4104	Marshalltown	366	69.1	371	67.7
4122	Martensdale-St Marys	37	78.4	32	75.0
4131	Mason City	301	72.9	276	73.8
4149	MOC-Floyd Valley	108	90.7	107	92.5
4203	Mediapolis	54	79.6	54	85.2
4212	Melcher-Dallas	27	85.2	29	89.7
4269	Midland	31	67.7	37	69.4
4271	Mid-Prairie	109	80.7	111	79.3
4356	Missouri Valley	58	70.7	54	63.0
4419	MFL MarMac	60	73.3	54	77.8
4437	Montezuma	36	72.2	36	83.3
4446	Monticello	81	77.8	98	66.3
4491	Moravia	23	73.9	33	81.8
4505	Mormon Trail	17	76.5	20	75.0
4509	Morning Sun	17	82.4	20	95.0
4518	Moulton-Udell	14	78.6	14	78.6
4527	Mount Ayr	40	67.5	54	75.9
4536	Mount Pleasant	139	74.1	157	80.9
4554	Mount Vernon	90	88.9	97	86.6
4572	Murray	23	87.0	26	57.7
4581	Muscatine	360	78.3	393	68.5
4599	Nashua-Plainfield	44	75.0	39	82.1
4617	Nevada	102	88.2	119	89.8
4644	Newell-Fonda	42	76.2	46	76.1
4662	New Hampton	55	80.0	80	82.5
4689	New London	40	77.5	48	87.5
4725	Newton	211	75.2	229	80.7
4772	Central Springs	70	80.0	48	75.0
4773	Northeast	42	81.0	48	87.5
4774	North Fayette	52	88.2	63	88.5
4775	Northeast Hamilton	14	78.6	11	63.6
4776	North Mahaska	41	95.1	46	84.8
4777	North Linn	52	80.8	44	86.4
4778	North Kossuth	23	82.6	20	70.0
4779	North Polk	105	85.7	118	88.1
4784	North Scott	206	85.9	237	79.6
4785	North Tama County	33	81.8	35	82.9
4787	North Winneshiek	13	61.5	14	100.0
4788	Northwood-Kensett	32	83.9	37	77.8
4797	Norwalk	185	85.9	230	87.8

District	District Name	2013		2014	
		Enrolled	% Proficient	Enrolled	% Proficient
4860	Odebolt-Arthur	16	100.0	28	85.7
4869	Oelwein	77	64.0	83	74.7
4878	Ogden	45	95.6	37	89.2
4890	Okoboji	83	95.2	79	91.1
4905	Olin Consolidated	14	35.7	9	66.7
4978	Orient-Macksburg	10	60.0	14	85.7
4995	Osage	64	88.9	73	83.6
5013	Oskaloosa	184	72.3	164	73.2
5049	Ottumwa	344	58.7	354	56.2
5121	Panorama	60	55.0	56	80.4
5139	Paton-Churdan	14	78.6	12	83.3
5160	PCM	67	85.1	83	85.5
5163	Pekin	43	95.3	60	85.0
5166	Pella	160	97.5	190	91.1
5184	Perry	144	42.4	96	61.5
5250	Pleasant Valley	323	90.1	320	86.6
5256	Pleasantville	49	83.7	52	86.3
5283	Pocahontas Area	42	88.1	46	71.7
5310	Postville	47	48.9	52	42.3
5325	Prairie Valley	45	82.2	35	91.4
5328	Prescott	8	62.5	6	66.7
5463	Red Oak	85	69.5	83	77.1
5486	Remsen-Union	23	91.3	28	71.4
5508	Riceville	27	81.5	17	70.6
5510	Riverside	37	56.8	53	71.7
5607	Rock Valley	57	76.4	56	85.7
5625	Rockwell City-Lytton	62	87.1	68	92.6
5643	Roland-Story	72	87.5	80	85.0
5697	Rudd-Rockford-Marble Rk	32	71.0	23	65.2
5724	Ruthven-Ayrshire	19	78.9	18	50.0
5751	St Ansgar	35	97.1	41	90.2
5805	Saydel	84	58.3	103	74.8
5823	Schaller-Crestland	30	83.3	25	64.0
5832	Schleswig	17	76.5	22	63.6
5868	Sentral	34	73.5	22	90.9
5877	Sergeant Bluff-Luton	119	90.8	120	92.4
5895	Seymour	20	90.0	20	60.0
5922	West Fork CSD	43	86.0	48	75.0
5949	Sheldon	71	78.9	77	77.6
5976	Shenandoah	78	68.8	64	81.3
5994	Sibley-Ocheyedan	56	81.8	62	82.3
6003	Sidney	19	89.5	26	92.3
6012	Sigourney	43	79.1	50	66.0
6030	Sioux Center	72	77.5	92	76.9
6035	Sioux Central	32	65.6	43	88.4
6039	Sioux City	1101	66.9	866	67.6

District	District Name	2013		2014	
		Enrolled	% Proficient	Enrolled	% Proficient
6091	Southern Cal	n/a	n/a	n/a	n/a
6093	Solon	103	82.4	90	89.9
6094	Southeast Warren	30	80.0	39	92.3
6095	South Hamilton	52	71.2	42	81.0
6096	Southeast Webster Grand	40	72.5	39	76.9
6097	South Page	11	63.6	6	33.3
6098	South Tama County	111	71.2	100	61.0
6099	South O'Brien	42	76.2	44	93.2
6100	South Winneshiek	36	66.7	35	82.9
6101	Southeast Polk	457	78.5	531	83.6
6102	Spencer	142	81.6	151	86.6
6120	Spirit Lake	70	82.9	109	87.2
6138	Springville	30	80.0	26	69.2
6165	Stanton	16	93.8	18	100.0
6175	Starmont	55	70.4	3	33.3
6219	Storm Lake	173	59.8	199	58.3
6246	Stratford	7	71.4	11	63.6
6264	West Central Valley	59	93.2	54	86.5
6273	Sumner	40	82.5	53	77.4
6408	Tipton	71	80.3	76	77.6
6417	Titonka Consolidated	5	80.0	n/a	n/a
6453	Treynor	64	89.1	66	90.9
6460	Tri-Center	54	84.9	46	91.3
6462	Tri-County	12	50.0	26	69.2
6471	Tripoli	26	69.2	32	53.1
6509	Turkey Valley	22	95.5	25	84.0
6512	Twin Cedars	21	71.4	29	71.4
6516	Twin Rivers	10	100.0	7	100.0
6534	Underwood	60	85.0	48	89.6
6536	Union	95	82.1	58	81.0
6561	United	18	94.4	42	88.1
6579	Urbandale	285	81.4	292	89.4
6591	Valley	33	72.7	31	67.7
6592	Van Buren	39	64.1	42	85.7
6615	Van Meter	41	87.8	51	84.3
6633	Ventura	15	93.3	13	84.6
6651	Villisca	20	50.0	27	70.4
6660	Vinton-Shellsburg	115	78.6	125	88.0
6700	Waco	33	66.7	35	85.7
6741	East Sac County	63	82.5	64	92.2
6750	Walnut	10	70.0	9	88.9
6759	Wapello	34	67.6	37	75.0
6762	Wapsie Valley	63	71.4	60	78.3
6768	Washington	109	63.9	114	64.9
6795	Waterloo	828	56.7	824	54.9
6822	Waukee	635	87.2	681	88.8

District	District Name	2013		2014	
		Enrolled	% Proficient	Enrolled	% Proficient
6840	Waverly-Shell Rock	137	89.0	164	86.5
6854	Wayne	42	69.0	35	85.7
6867	Webster City	112	84.8	106	84.0
6921	West Bend-Mallard	18	88.9	19	57.9
6930	West Branch	57	71.4	57	73.7
6937	West Burlington Ind	56	89.3	74	85.1
6943	West Central	20	75.0	18	100.0
6950	West Delaware County	101	82.2	103	73.8
6957	West Des Moines	661	82.7	666	78.2
6961	Western Dubuque	184	78.8	223	87.4
6969	West Harrison	21	66.7	15	86.7
6975	West Liberty	97	64.9	78	70.5
6983	West Lyon	76	86.8	74	93.1
6985	West Marshall	73	84.9	71	77.5
6987	West Monona	52	82.7	58	77.6
6990	West Sioux	52	75.0	60	66.7
6992	Westwood	38	84.2	41	82.9
7002	Whiting	21	76.2	22	100.0
7029	Williamsburg	78	75.6	85	80.0
7038	Wilton	58	82.8	71	78.9
7047	Winfield-Mt Union	22	95.5	31	67.7
7056	Winterset	140	72.9	129	82.2
7092	Woodbine	35	85.7	29	86.2
7098	Woodbury Central	37	89.2	38	84.2
7110	Woodward-Granger	55	85.2	56	94.6

Source: Iowa Department of Education, Adequate Yearly Progress (AYP files)

Note: Percent of Students Proficient uses Full Academic Year Students.