

**THE IOWA
CONSORTIUM**
FOR SUBSTANCE ABUSE RESEARCH AND EVALUATION

**———— OUTCOMES MONITORING SYSTEM ————
IOWA PROJECT
YEAR SIX REPORT**

PREPARED BY:

**IOWA CONSORTIUM FOR SUBSTANCE ABUSE RESEARCH AND EVALUATION
UNIVERSITY OF IOWA, IOWA CITY, IOWA 52242-5000**

WITH FUNDS PROVIDED BY:

IOWA DEPARTMENT OF PUBLIC HEALTH, DIVISION OF HEALTH PROMOTION, PREVENTION, AND ADDICTIVE BEHAVIORS



**THE IOWA
CONSORTIUM**
FOR SUBSTANCE ABUSE RESEARCH AND EVALUATION

— **OUTCOMES MONITORING SYSTEM** —
IOWA PROJECT

YEAR SIX REPORT

SEPTEMBER 2004

AMANDA D. JOHNSON, M.A.
EVALUATION COORDINATOR

STEPHAN ARNDT, PHD
DIRECTOR

KRISTINA BARBER, MSM
ASSOCIATE DIRECTOR

© 2004 IOWA CONSORTIUM FOR SUBSTANCE ABUSE RESEARCH AND EVALUATION
UNIVERSITY OF IOWA
100 OAKDALE CAMPUS
IOWA CITY, IOWA 52242-5000

Executive Summary

OMS Background

The Outcomes Monitoring System (OMS) was established to systematically gather data on substance abuse treatment outcomes in Iowa. Randomly selected clients are tracked for follow-up interviews that occur approximately six months after discharge from treatment. In calendar year 2003, 362 follow-up interviews were completed.

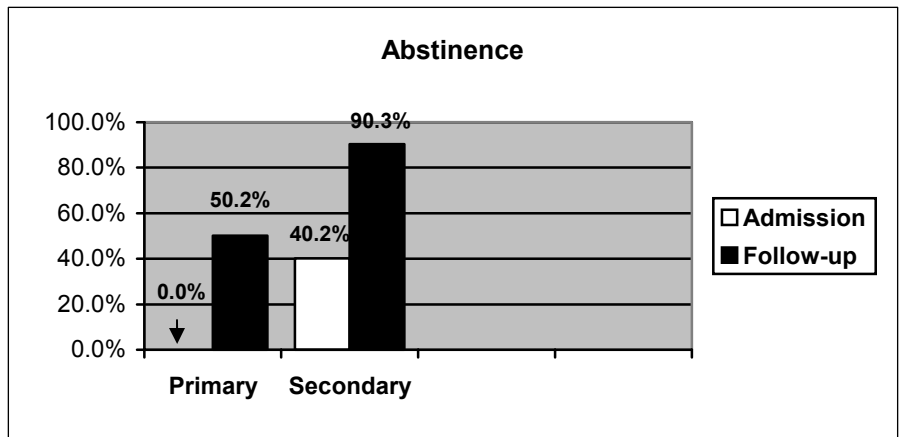
Overview of Findings

Changes between the admission and follow-up data include the following highlights:

Outcomes at Admission and Follow-Up				
	N	% Abstained	% No Arrest	% Employed Full-Time
Admission	832	0.0 (0)	30.9 (257)	36.1 (300)
Follow-Up	362	50.2 (181)	88.7 (319)	52.7 (191)

Primary and Secondary Substance

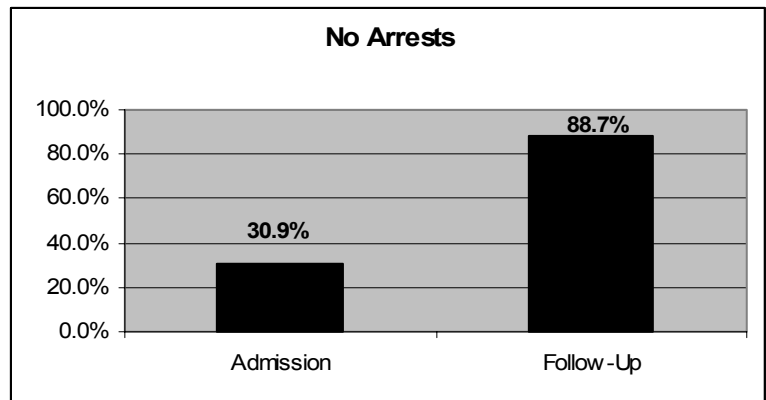
- Clients responding to “no primary substance” increased from 0.0% at admission to 50.2% at follow-up. For secondary substance use, 40.2% of clients reported no use at admission. This number increased at follow-up to 90.3% of clients reporting no use of a secondary substance.



- Of those clients reporting use of a primary substance, alcohol was the most common at both admission (51%) and follow-up (77.3%).

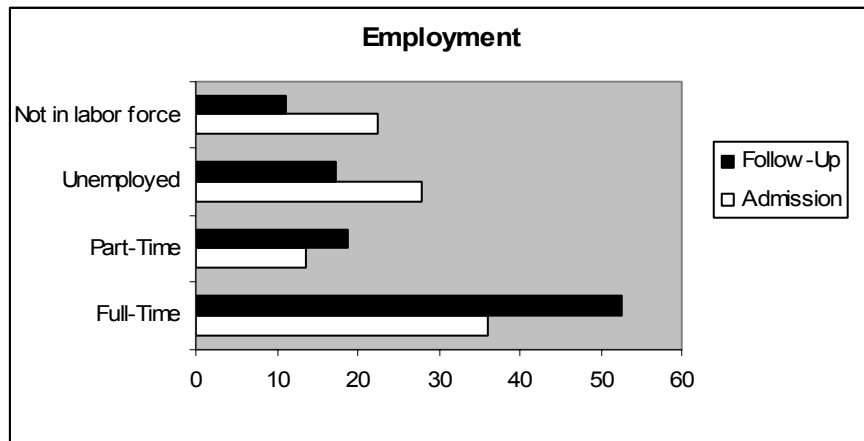
Arrests

- At admission, 30.9% of clients reported no arrests in the twelve months prior to their admission to treatment.
- At follow-up, 88.7% of clients reported no arrests in the six months since their discharge from treatment.



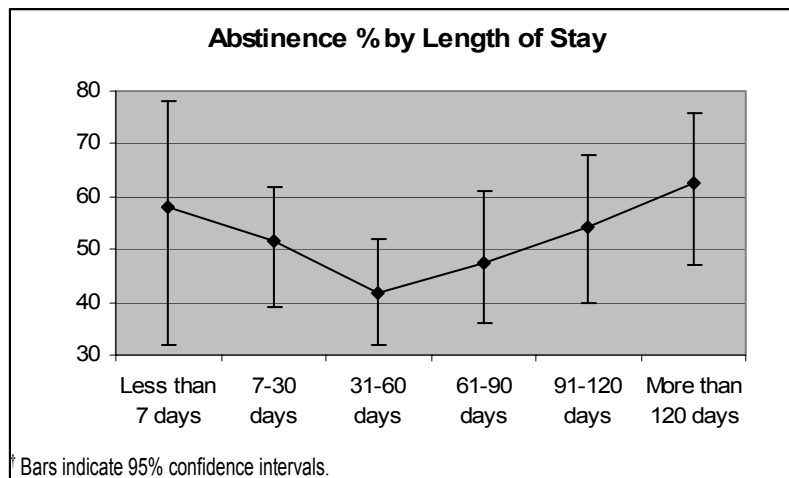
Employment Status

- The percent of clients employed full-time increased from 36.1% at admission to 52.7% at follow-up. Likewise, part-time employment among clients increased from 13.7% at admission to 18.7% at follow-up. Conversely, unemployment dropped from 27.8% at admission to 17.8% at follow-up and clients not in the labor force decreased from 22.4% at admission to 11.2% at follow-up.



Length of Stay

- The abstinence percentage for clients who were in treatment longer than 30 days increased in essentially a straight line as length of stay increased.
- Data on no arrest rate and full-time employment by length of stay also was examined, but are not statistically significant. Clients in all length of stay categories had an arrest-free rate of approximately 90% and approximately 55% of clients in each length of stay category reported full-time employment.



Primary substance use was examined in relation to the key outcome variables of abstinence, number of arrests, employment, and length of stay.

Abstinence

- Clients whose primary substance at admission was methamphetamine had the highest abstinence rate of 65.5%, with the exception of four substance groups with only 1 or 2 clients. The lowest abstinence rate of 43.9% belonged to those clients whose primary substance at admission was alcohol. Clients reporting marijuana as their primary substance at admission had an abstinence rate of 53.3%.

Arrests

- Over 90% of clients whose primary substance was alcohol at admission reported no arrests at follow-up. Marijuana and methamphetamine as primary substances at admission were similar with 86.8% and 86.0% of clients respectively, reporting no arrests at follow-up.

Employment

- Although not statistically significant, full-time employment at follow-up was reported by 58.7% of clients whose primary substance was alcohol at admission. Slightly over half of the clients whose primary substance at admission was methamphetamine were employed full-time at follow-up.

Length of stay

- For clients who reported alcohol as their primary substance at admission, 28.2% had a length of stay of 31-60 days. Almost 25% of clients who reported marijuana as their primary substance also had a length of stay of 31-60 days. While only 18.1% of clients who reported methamphetamine as their primary substance at admission had a length of stay of 31-60 days (the lowest percent for this length of stay), clients who reported methamphetamine were the highest percent (17.1%) of clients who had a length of stay of 120 days or more.

ACKNOWLEDGEMENTS

Several staff members at the Iowa Consortium for Substance Abuse Research and Evaluation made significant contributions to this report. We would like to especially thank Vishal Gupta for delivering numbers for analysis and for presenting those numbers in a desirable format. There would be no data to report if it were not for the dedication and impressive work of research assistants Juanita Richman, Angela Trujillo, and Bethany Moore who tracked the clients and conducted the follow-up interviews. Also, special thanks to Dr. Stephen Arndt and Kristina Barber for their guidance through the process and contributions to the report.

Table of Contents

Section A. Background	3
Section B. OMS Overview	3
B.1. Sampling Procedures	3
B.2. Recruitment	4
B.3. Tracking	4
B.4. Follow-up Interview	5
Section C. Recruitment, Tracking, Follow-up Efforts	5
Section D. Changes from Admission to Follow-up	6
Section E. Comparison of Admission and Follow-up Responses	7
Table 1: Primary Substance Used	8
Table 2: Secondary Substance Used	9
Table 3: Frequency of Primary Substance	10
Table 4: Frequency of Secondary Substance Abuse	10
Table 5: Change in Substance Use at Follow-up	10
Table 6: Days per Month Attended AA, NA or similar Meetings	11
Table 7: Arrests	11
Table 8: Hospitalizations	11
Table 9: Employment Status	12
Table 10: Months Employed	12
Table 11: Income	12
Table 12: Income Source	13
Table 13: Days Missed Work or School	13
Table 14: Education	14
Table 15: Relationship Status	14
Table 16: Living Arrangements	15
Section F. Outcome: Abstinence	15
Table 17: Abstinence by Primary Substance Used	16
Table 18: Abstinence by Employment	17
Table 19: Abstinence by Living Arrangements	17
Table 20: Abstinence by Relationship	18
Table 21: Abstinence by Income Source	18
Table 22: Abstinence by Income	19
Table 23: Abstinence by Arrests	19
Table 24: Behavioral Change and Abstinence at Follow-up	20
Table 25: AA/NA Meetings Attended	20
Section G. Outcome: Arrests	20
Table 26: No Arrests by Primary Substance Used	21
Table 27: No Arrests by Employment	22
Table 28: No Arrests by Living Arrangements	22
Table 29: No Arrests by Relationship	23
Table 30: No Arrests by Income Source	23
Table 31: No Arrests by Income	24

Section H. Outcome: Employment	24
Table 32: Full Time Employment by Primary Substance Used	25
Table 33: Full Time Employment by Living Arrangement	26
Table 34: Full Time Employment by Relationship	26
Table 35: Full Time Employment by Income Source	27
Table 36: Full Time Employment by Income	27
Section I. Length of Stay	28
Table 37: Length of Stay by Outcomes	28
Table 38: Length of Stay by Primary Substance at Admission	29
Section J. Recommendations	30

APPENDIX: Presentation of Tracking Data

Table A1: Client Classification Codes	31
Diagram A1: All Clients--January 1 – December 31, 2003	32
Diagram A2: Adults--January 1 – December 31, 2003	33
Diagram A3: Adolescents--January 1 – December 31, 2003	34
Tracking Report for Clients Admitted in 2003	
Table A2. Case Status – All Clients	35
Table A3. Closed by Category- All Clients	35
Table A4. Rates for all Clients	35
Tracking Report for Clients Admitted in 2003—Adults	
Table A5. Case Status – Adults	36
Table A6. Closed by Category – Adults	36
Table A7. Rates for Adults only	36
Tracking Report for Clients Admitted in 2003--Adolescents	
Table A8. Case Status – Adolescents	37
Table A9. Closed by Category – Adolescents	37
Table A10. Rates for Adolescents only	37
Table A11. Client Contacts Closed Cases--Number and Type of Contact	38
OMS Client Contact Data--All Clients with Closed Cases	
Table A12. Clients - interview obtained	39
Table A13. Clients with no interview	39
Table A14. Average number of contacts and minutes per client	39

Section A. Background

In July 1998, at the request of the Iowa Department of Public Health (IDPH), the Iowa Consortium for Substance Abuse Research and Evaluation (Consortium) designed and tested an Outcomes Monitoring System (OMS) to reflect substance abuse treatment related outcomes in Iowa. Before then, treatment agency staff conducted their own interviews. Implementation of the OMS project relieved the treatment agencies from the responsibility of tracking and interviewing clients, and provided an independent evaluation regarding treatment related client outcomes. OMS client sampling was initiated in January 1999.

In addition to providing treatment related outcomes, OMS was created to examine:

- the costs associated with the tracking, recruiting and interviewing substance users by an independent organization;
- the effects of different levels of care on treatment outcomes for various client groups; and
- the process involved in obtaining and utilizing meaningful client outcomes at the individual agency level.

Section B. OMS Overview

B.1. Sampling Procedures

Since 1982, IDPH has collected client data using the Substance Abuse Reporting System (SARS). Data are collected that relate to various aspects of the treatment provision process including: crisis, screening, admission, discharge, services, and follow-up. OMS follow-up data collection is designed to integrate with SARS data. While the primary focus of OMS is the acquisition of follow-up data, the success of its design is dependent upon complete and accurate SARS admission and discharge data.

OMS data are obtained through random sampling procedures from the population of publicly funded substance abuse treatment clients. This population includes drug clients who receive IDPH-funded treatment in one of the following environments: medically managed inpatient, primary residential treatment, extended residential treatment, halfway house, continuing care, extended outpatient, intensive outpatient, or medically monitored residential. The data set from which the sample is drawn is comprised of the previous month's SARS admission data. Given that the number of admissions varies from month to month, the sample size also varies. The average monthly sample size during calendar year 2003 was 64 with a range of 51 to 93 clients.

In August 2003, the monthly random sample size was increased from approximately 5% to 8% of the adult and adolescent (age 18 and younger) client population. The sampling also was weighted to increase the number of clients from medium and small agencies. Due to the change in the sampling proportions, data have been weighted resulting in minor variations in the N values. The percentages, however, are accurate.

B.2. Recruitment

Immediately after the monthly OMS sample is selected, Consortium staff members contact clients in an effort to secure a verbal agreement to participate in a 15 minute follow-up telephone interview that takes place approximately six months after discharge from treatment. When OMS staff locate a potential participant via the telephone, they explain that they are calling on behalf of the Health Research Network (HRN is a pseudonym for the Consortium.) and that they would like to talk about participation in a public health study. Staff members confirm the identity of the client before describing the project in detail and attempting to recruit the client. The confirmation process involves matching social security number and date of birth records during the phone call. If the information matches, the staff member will read the remaining recruitment script that describes OMS and the risks and benefits associated with participation in the OMS project.

After the script has been read, clients are asked if they would like to participate in OMS. If they agree to participate, client contact information is recorded and participants are told that they will receive periodic update calls or letters from OMS staff until it is time for the follow-up interview. OMS staff explain that the update calls take only a few minutes and are used to keep contact information current. OMS staff also collect collateral contact information for a client, such as a relative's phone number, during the update call. Participants are informed that when an update call is made, OMS staff members identify themselves as a staff member with the Health Research Network, calling to inquire about a public health study.

Clients without phone contact information or those that do not have current telephone service are sent letters asking them to call the Health Research Network's toll-free number in regard to a public health study. Clients frequently call the toll-free number from a pay phone or from a neighbor's phone to contact OMS staff members. It is at this point that recruitment occurs and information is recorded about contacting them in the future.

Clients may refuse participation in OMS at any time. They may refuse during the reading of the recruitment script or they may withdraw their participation after previously indicating that they would like to take part in the follow-up interview. There are no penalties for withdrawing participation in the study. Clients do, however, receive a twenty-five dollar gift certificate upon completion of the follow-up interview.

B.3. Tracking

Client tracking information is recorded on each client until the case is closed. This tracking information consists of the successful contacts and attempted contacts that are made in an effort to communicate with the client. There are two groups of tracking information: 1) the contacts that take place prior to a client's recruitment; and 2) the contacts that take place after a client has been successfully recruited into OMS. Once a client refuses participation, the case is officially closed and tracking of that individual ceases unless the client later contacts the HRN and indicates a desire to participate.

An on-line system for recording tracking information in real time was developed and implemented in 2002. OMS staff members enter tracking events for each client as they occur. This provides a database that contains updated tracking and case status information for each client. This system reduces data entry time and provides more detailed information while reducing the chance for error.

B.4. Follow-up Interview

Four important elements of OMS must be present before a client's follow-up interview can occur. OMS staff must: 1) be able to contact the client via the telephone; 2) have the client's documented agreement to participate in the follow-up interview; 3) have a discharge date from IDPH; and 4) have documented that six months have passed since the discharge date.

The discharge date is critical as it sets the time frame for when the follow-up interview should take place. Since its inception, the OMS design has follow-up interviews occurring six months after the client has been discharged from primary treatment. Without an official SARS discharge date, it is impossible for OMS staff to determine when an interview should take place.

Once OMS staff receives a SARS discharge date, a plan to obtain the client follow-up interview is implemented. Due to the normal complexities of every day living, it is not always possible to obtain the follow-up interview on the exact post discharge date. Given this, the project design allows OMS staff to interview recruited participants anywhere from two weeks prior to eight weeks after the date that indicates six months post discharge.

Section C. Recruitment, Tracking and Follow-Up Efforts

This report describes the group of randomly selected clients who had treatment admission dates from January 1, 2003 through December 31, 2003. During this twelve month period, 832 individuals were selected to take part in the OMS project. Of that number, 582 individuals have consented to participate in the follow-up interview process. To date, 362 of these follow-up interviews have been completed. An additional 142 individuals, who have been recruited, are receiving regular update calls from staff as their interview date nears. Of the OMS clients admitted during the 2003 calendar year, 83 declined to participate in the project.

The total number of clients currently classified as "not able to recruit" is 119. Of this number, 41 individuals are incarcerated. OMS staff is not allowed to recruit or interview individuals that are incarcerated; however, several clients (24) became incarcerated after being successfully recruited into the follow-up study. Seventy-three unrecruited individuals could not be located, even after numerous phone calls, letters, and internet searches. Likewise, 39 clients who were successfully recruited, could not be located when their interview date arrived. Interview due dates already had passed for 4 unrecruited and 4 recruited clients when the Consortium received notification of their discharge dates. Two clients died.

In this report, the recruitment rate was calculated two ways. The first recruitment rate is based on only those individuals OMS staff was able to contact and who then directly told the staff that they either did or did not want to participate in OMS. This calculation results in a recruitment rate of 87.5%. The second recruitment rate is based on all individuals who had a potential opportunity to state whether or not they wanted to participate in the OMS. Therefore, the denominator of the second recruitment rate includes a larger set of individuals consisting of those who were successfully recruited, those who refused, and unrecruited clients whom staff has been unable to locate. This calculation results in a recruitment rate of 78.9%.

Of the clients eligible for a follow-up interview (successfully recruited who are not in prison, and with an interview due date that has arrived), 87.0% received an interview. This includes recruited clients who could not be located when their interview was due and those who decided not to take part in the interview after initially agreeing to do so.

Detailed tracking information regarding the status of the entire OMS sample is displayed in the Appendix, pages 31 through 39.

Section D. Changes from Admission to Follow-Up

Clients undergo many changes after admission to substance abuse treatment. When considering the observed changes, it is important to use caution when ascribing reasons for the changes to particular causes, i.e. good treatment/poor treatment, number of previous treatments/no previous treatment, etc. It is also important to realize that a combination of many factors affect client outcomes. These include such things as readiness to change, mental illness, transportation, child care needs, age, gender, culture, ethnicity, etc.

The tables in Section E reflect the changes in a client's life situation based on a comparison of the SARS admission data and the OMS SARS follow-up interview data collected approximately six months after discharge and, on average, 8 months following admission. Comparisons on individual variables are made between status at admission and status at follow-up on those clients who had a response at *both* admission and follow-up for that variable. Fifteen categories were identified for comparison from the SARS admission and follow-up forms. Some of the more interesting findings between the admission and follow-up data are reported below. For a complete overview of comparisons refer to the tables in Section E on pages 7 through 15.

- **Primary Substance Used:** Clients responding “no primary substance” increased from 0% at admission to 50.2% at follow-up. Thus, at follow-up, half of the clients remained abstinent after treatment. For those clients who were not abstinent at follow-up, alcohol was the most common primary substance with 77.3% of clients reporting use.
- **Frequency of Primary Substance Use:** Nearly twice as many clients reduced the frequency of their primary substance (51.7%) compared to those who increased their use (27.4%). Of the people who used at least daily at admission, 46.6% were abstinent and an additional 13.5% had reduced the frequency of their use.
- **Secondary Substance Use:** Clients responding “no secondary substance” increased from 42.8% to 90.3%. Therefore, only 9.7% of clients reported using more than one substance at follow-up. For those who did indicate use of a secondary substance, marijuana was most common followed by alcohol. Both showed a large decrease between admission and follow-up in the percentage of clients using them (decreases of 22.2 and 17.8 percentage points).
- **Frequency of Secondary Substance Use:** Clients were 10 times more likely to reduce the frequency of their secondary substance use – over 40% reduced their use while only 3.9% increased their use.
- **Arrests:** For the question regarding arrests, the admission response refers to the 12 months prior to admission and the follow-up response refers to the 6 months since discharge. Only 11.3% of the clients had been arrested during the 6 months following treatment. Of those who were arrested, nearly all were arrested 1-3 times.

- **Months Employed:** Clients responding “no months employed” went down 19.6 percentage points while clients responding “4 or more months” for employment went up 16.2 percentage points.
- **Income:** Clients responding “no income” dropped 25.1 percentage points. Clients responding to “\$1001 to \$2000 for taxable monthly income” increased by 8.1 percentage points. This increase in monthly income corresponds with the previous finding that more clients are employed.

Section E. Comparison of Admission and Follow-up Responses

Tables 1 through 16 show the admission responses from all clients admitted in 2003. The tables also describe the admission and follow-up responses from the clients who completed follow-up interviews (a subset of the first group). The first column describes the responses, or categories of responses, for the SARS question. The second column describes the responses for all clients in the OMS that answered the item at admission. The third and fourth columns describe the responses for clients that answered the particular item both at admission and at follow-up—a group of 368 clients. The number of clients in this group is smaller because it represents only those clients who completed the follow-up interview.

Table 1. Primary Substance Used

At follow-up, 50% indicated no primary substance was used. The success rates for primary substance used are included in the Outcomes section on pages 16, 21 and 25.

	Complete OMS Sample at Admission % N=832 (weighted)	OMS Sample with Follow-Up Interviews Completed N=362 (weighted %)	
		Admission	Follow-Up
None	0.0	0.0	50.2
Alcohol	46.3	51.0	38.5
Marijuana and/or hashish	27.1	26.7	8.3
Methamphetamine	20.9	17.8	2.1
Cocaine	3.7	2.7	0.7
Other Opiates and Synthetics	0.7	0.5	0.0
Heroin	0.6	0.4	0.0
Other Amphetamine	0.3	0.4	0.0
Benzodiazepines	0.2	0.4	0.0
Other Stimulants	0.2	0.4	0.0
PCP	0.1	0.0	0.0
Other	0.0	0.0	0.1
Barbiturates	0.0	0.0	0.0
Inhalants	0.0	0.0	0.0
Other Hallucinogens	0.0	0.0	0.0
Other Sedatives and Hypnotics	0.0	0.0	0.0
Over the Counter	0.0	0.0	0.0
Non-Prescription Methadone	0.0	0.0	0.0
Other Tranquilizers	0.0	0.0	0.0
Steroids	0.0	0.0	0.0
Ecstasy	0.0	0.0	0.0

† Due to rounding, percentages may not add up to exactly 100%.

Table 2. Secondary Substance Used

Clients responding “no secondary substance” increased by 50 percentage points from 40.2% to 90.3% at follow-up. Therefore, only 9.7% of clients reported using more than one substance at follow-up.

	Complete OMS Sample at Admission % N=832 (weighted)	OMS Sample with Follow-Up Interviews Completed N=362 (weighted %) [†]	
		Admission	Follow-Up
None	38.8	40.2	90.3
Alcohol	21.7	20.4	2.6
Marijuana and/or hashish	25.9	26.9	4.7
Methamphetamine	8.2	9.0	1.8
Cocaine	3.9	2.4	0.5
Other Opiates and Synthetics	0.3	0.4	0.0
Heroin	0.2	0.0	0.0
Other Amphetamine	0.0	0.0	0.0
Benzodiazepines	0.0	0.0	0.0
Other Stimulants	0.0	0.0	0.0
PCP	0.0	0.0	0.0
Other	0.4	0.1	0.0
Barbiturates	0.0	0.0	0.0
Inhalants	0.0	0.0	0.0
Other Hallucinogens	0.1	0.1	0.0
Other Sedatives and Hypnotics	0.2	0.0	0.0
Over the Counter	0.0	0.0	0.0
Non-Prescription Methadone	0.0	0.0	0.0
Other Tranquilizers	0.4	0.6	0.0
Steroids	0.0	0.0	0.0
Ecstasy	0.0	0.0	0.1

[†] Due to rounding, percentages may not add up to exactly 100%.

Tables 3 and 4 reflect changes in the frequency of substance use. These tables describe frequency change for the primary and secondary substances that are reported at the time of the interview. At follow-up, the primary substance listed at admission may no longer be their drug of choice. For example, a participant who reports alcohol as their primary substance at admission, and they use it 1-2 times per week, may report at follow-up that they have used their primary substance 1-3 times in the past month. Although this looks like a promising finding, caution

must be used when interpreting it because the participant may have made a change in the type of primary drug. Table 5 shows the percentage of clients who changed primary drugs.

Table 3. Frequency of Primary Substance

At admission, 14.9% of clients reported “no use in the past six months.” At follow-up, the percentage increased to 50.5% for this category (an increase of 35.6 percentage points).

	Complete OMS Sample at Admission % N=832 (weighted)	OMS Sample with Follow-Up Interviews Completed N=362 (weighted %)		
		Admission	Follow-Up	Change
No use in past six months	15.8	14.9	50.5	+35.6
No past month use	32.8	34.3	8.4	-25.9
1-3 times in past month	24.4	26.4	13.3	-13.1
1-2 times per week	10.9	11.1	16.2	+5.1
3-6 times per week	5.2	4.7	7.2	+2.5
Once daily	4.6	3.8	3.5	-0.3
2-3 times daily	3.0	2.6	0.3	-2.3
4 + times daily	3.3	2.2	0.6	-1.6

Table 4. Frequency of Secondary Substance

Clients responding “no use in the past six months” increased by 30.0 percentage points from 60.3% to 90.3%. At follow-up, no clients reported using more than 2-3 times daily and less than 1% of clients reported using 3-6 times per week or once daily.

	Complete OMS Sample at Admission % N=832 (weighted)	OMS Sample with Follow-Up Interviews Completed N=362 (weighted %)		
		Admission	Follow-Up	Change
No use in past six months	57.9	60.3	90.3	+30.0
No past month use	17.6	16.1	4.8	-11.3
1-3 times in past month	13.8	15.0	2.1	-12.9
1-2 times per week	4.7	4.0	1.8	-2.2
3-6 times per week	2.4	1.9	0.7	-1.2
Once daily	1.9	2.0	0.4	-1.6
2-3 times daily	0.6	0.1	0.0	-0.1
4 + times daily	1.1	0.6	0.0	-0.6

Table 5. Change in substance use at follow-up

	% of Non-abstinent Clients N=180 [†]
Changed primary substance	29.0
Changed secondary substance	55.1
Changed frequency of primary drug	78.7
Changed frequency of secondary drug	47.1

[†] The number of clients is rounded to the nearest integer but could contain a decimal point due to weighting of the data. Therefore, the number of clients is approximate.

Table 6. Days per month attended AA, NA or similar meetings

Clients indicating “no meetings” decreased by 28.2 percentage points. Clients indicating “1-10 meetings” increased by 24.3 percentage points. Compared to clients’ attendance at AA or NA meetings at the time of admission, attendance increased substantially during the 6 months following discharge from treatment.

	Complete OMS Sample at Admission % N=832 (weighted)	OMS Sample with Follow-Up Interviews Completed N=361 (weighted %)		
		Admission	Follow-Up	Change
None	76.5	81.7	53.5	-28.2
1- 10 meetings	17.4	14.3	38.6	+24.3
11 + meetings	6.1	4.0	7.9	+3.9

Table 7. Arrests

Clients responding “no arrests” increased by 58.1 percentage points from 30.6% at admission to 88.7% at follow-up. This shows that only 11.4% of the clients had been arrested during the 6 months following treatment.

	Complete OMS Sample at Admission % N=832 (weighted)	OMS Sample with Follow-Up Interviews Completed N=359 (weighted %)		
		Admission	Follow-Up	Change
None	30.9	30.6	88.7	+58.1
1-3 times	65.1	66.2	11.0	-55.2
4 times or more	4.0	3.2	0.4	-2.8

Table 8. Hospitalizations

The percent of clients reporting hospitalization at follow-up (1.1%) was six times less than the percent reported at admission (9.0%). Clients indicating “no hospitalizations” increased from 91.0% at admission to 98.6% at follow-up.

	Complete OMS Sample at Admission % N=832 (weighted)	OMS Sample with Follow-Up Interviews Completed N=362 (weighted %)		
		Admission	Follow-Up	Change
None	89.5	91.0	98.6	+7.6
1-3 times	10.5	9.0	1.1	-7.9
4 times or more	0.0	0.0	0.4	+0.4

Table 9. Employment Status

Clients responding “employed full time” increased by 16.7 percentage points. Clients responding “unemployed” decreased by nine percentage points. At follow-up, 71.4% of clients reported being employed full or part-time, an improvement over the 50.8% of clients reporting full or part-time employment at admission. The percentage of those “not in labor force” was reduced by more than one-half (22.9% to 11.2%) between admission and follow-up.

	Complete OMS Sample at Admission % N=832 (weighted)	OMS Sample with Follow-Up Interviews Completed N=362 (weighted %)		
		Admission	Follow-Up	Change
Employed Full Time (>35 hrs/ wk)	36.1	36.0	52.7	+16.7
Employed Part Time (<35 hrs/ wk)	13.7	14.8	18.7	+3.9
Unemployed (looking for work in the past 30 days)	27.8	26.4	17.4	-9.0
Not in labor force	22.4	22.9	11.2	-11.7

Table 10. Months Employed

The percent of clients responding “none” to months employed was five times less at follow-up (4.9%) than at admission (24.5%). Over 70% of clients were employed 4 months or more at follow-up.

	Complete OMS Sample at Admission % N=832 (weighted)	OMS Sample with Follow-Up Interviews Completed N=328 (weighted %)		
		Admission	Follow-Up	Change
None	29.0	24.5	4.9	-19.6
1-3 months	22.0	21.2	24.6	+3.4
4 + months	49.0	54.3	70.5	+16.2

Table 11. Income

Clients responding “none” decreased by 25.1 percentage points. There was an increase in all taxable monthly income categories, supporting the previous finding that more clients are employed.

	Complete OMS Sample at Admission % N = 826 (weighted)	OMS Sample with Follow-Up Interviews Completed N=313 (weighted %)		
		Admission	Follow-Up	Change
None	48.0	43.5	18.4	-25.1
\$500 or less	8.5	10.4	15.1	+4.7
\$501 to \$1000	18.9	16.1	20.3	+4.2
\$1001 to \$2000	18.3	22.8	30.9	+8.1
Over \$2001	6.3	7.1	15.3	+8.2

Table 12. Income Source

Clients responding “none” at follow-up decreased dramatically by 96% for clients completing follow-up interviews (from 17% to 0.7%). Over 45% of clients who responded “none” to income source at admission responded “wages/salary” at follow-up, which corresponds to a 13.3 percentage point increase in clients earning income.

	Complete OMS Sample at Admission % N=832 (weighted)	OMS Sample with Follow-Up Interviews Completed N=362 (weighted %)		
		Admission	Follow-Up	Change
None	20.6	17.7	0.7	-17.0
Wages/ Salary	47.7	46.7	60.0	+13.3
Family/ Friends	24.5	28.1	32.1	+4.0
Public Assistance	1.5	1.9	2.4	+0.5
Retirement/ Pension	0.4	0.4	0.0	-0.4
Disability	2.0	1.7	1.5	-0.2
Other	3.4	3.5	3.4	-0.1

Table 13. Days Missed Work or School

The percent of clients who reported missing work or school “six or more days” due to substance abuse decreased by approximately 83% between admission (6.5%) and follow-up (1.1%).

	Complete OMS Sample at Admission % N=832 (weighted)	OMS Sample with Follow-Up Interviews Completed N=362 (weighted %)		
		Admission	Follow-Up	Change
Five or fewer days	85.4	87.5	89.4	+1.9
Six or more days	7.2	6.5	1.1	-5.4
N/A	7.4	6.0	9.6	+3.6

Table 14. Education

At follow-up, 48.9% of clients had completed high school, a five percentage point increase from admission. The number of clients responding “did not graduate high school” decreased by seven percentage points, indicating that a number of clients completed high school or earned their GED between admission and follow-up.

	Complete OMS Sample at Admission % N=832 (weighted)	OMS Sample with Follow-Up Interviews Completed N=362 (weighted %)		
		Admission	Follow-Up	Change
Did Not Graduate High School	33.5	32.2	25.2	-7.0
High School Only	47.2	43.5	48.9	+5.4
Some College	16.3	20.2	19.4	-0.8
College Grad	3.2	4.2	6.5	+2.3

Table 15. Relationship Status

Clients responding “married” at follow-up decreased slightly, however, the number of clients “cohabiting” increased by over 40% between admission and follow-up. Although the percentage of clients responding “single” decreased by over three percentage points, it is the largest category with 53.5% of clients responding “single” to relationship status at follow-up.

	Complete OMS Sample at Admission % N = 832 (weighted)	OMS Sample with Follow-Up Interviews Completed N=362 (weighted %)		
		Admission	Follow-Up	Change
Single	55.2	57.0	53.5	-3.5
Married	14.3	13.6	12.3	-1.3
Cohabiting	10.4	8.8	15.8	+7.0
Separated	5.6	4.3	4.7	+0.4
Divorced	14.0	15.9	13.7	-2.2
Widowed	0.6	0.4	0.1	-0.3

Table 16. Living Arrangements

The majority of clients lived with parents, although the number decreased more than nine percentage points at follow-up.

	Complete OMS Sample at Admission % N = 832 (weighted)	OMS Sample with Follow-Up Interviews Completed N=362 (weighted %)		
		Admission	Follow-Up	Change
Alone	14.5	11.7	13.0	+1.3
Parents	27.3	35.8	26.3	-9.5
Significant Other Only	10.5	10.6	12.7	+2.1
Significant Other and Child(ren)	14.4	12.1	16.3	+4.2
Child(ren) Only	2.7	3.5	5.0	+1.5
Other Adults	18.2	17.8	16.3	-1.5
Other Adults and Child(ren)	4.8	5.0	6.7	+1.7
Prison or Jail	2.0	0.2	0.0	-0.2
Homeless	1.5	0.6	0.1	-0.5
Half-way House	4.1	2.9	3.8	+0.9
Hospital	0.0	0.0	0.0	0.0

Section F Outcome: Abstinence

Tables 17 through 25 examine abstinence in relation to other variables. Abstinence is defined as responding “none” when asked at follow-up to name a primary substance. The follow-up interview occurred approximately 6 months after the client was discharged from treatment. Mention of the “follow-up period” in this report refers to the 6 months between the client’s discharge from treatment and the follow-up interview.

Although 362 follow-up interviews were completed, individual tables contain data from fewer clients due primarily to missing data. The N for each question response represents the number of abstinent clients and the number of total clients (out of clients who answered the question at follow-up) who indicated that response.

Table 17. Abstinence by Primary Substance

Table 17 shows that clients whose primary substance at admission was alcohol (43.9%) or marijuana (53.3%) abstained at a lower rate during the follow-up period than clients whose primary substance was methamphetamine. Those whose primary substance at admission was methamphetamine had the highest abstinence percentage during the follow-up period (65.5%) with the exception of four substance groups made up of only 1 or 2 clients.

OMS Sample with Follow-Up Interviews Completed (N=362)	
Primary Substance at Admission	Abstinence at follow-up %* (N)†
Alcohol	43.9 (81/185)
Marijuana	53.3 (51/96)
Methamphetamine	65.5 (42/64)
Cocaine	19.7 (2/10)
Other Opiates and Synthetics	71.2 (1/2)
Heroin	0.0 (0/1)
Other Amphetamine	100.0 (1/1)
Benzodiazepines	100.0 (1/1)
Other Stimulants	100.0 (1/1)
PCP	0.0 (0/0)
Other	0.0 (0/0)
Barbiturates	0.0 (0/0)
Inhalants	0.0 (0/0)
Other Hallucinogens	0.0 (0/0)
Other Sedatives and Hypnotics	0.0 (0/0)
Over the Counter	0.0 (0/0)
Non-Prescription Methadone	0.0 (0/0)
Other tranquilizers	0.0 (0/0)
Steroids	0.0 (0/0)
Ecstasy	0.0 (0/0)

* Statistically significant ($p < .05$)

† The number of clients is rounded to the nearest integer but could contain a decimal point due to weighting of the data. Therefore, the numbers of clients are approximate but the percentages are accurate.

Tables 18 through 25 present one question each and show admission and follow-up responses from clients who completed the follow-up interview. The second column lists the abstinence percentage of clients at follow-up who were asked the question at admission and the third column lists the abstinence percentage of clients when asked the question at follow-up.

Table 18. Abstinence by Employment

Clients who were not in the labor force when they completed their follow-up interview had the highest abstinence rate of 63.0% at follow-up. Clients who reported they were not in the labor force at admission also had a relatively high abstinence rate of 54.7% at follow-up. For clients employed full or part-time at follow-up, an abstinence rate of 48.6% was reported. The number of clients employed full-time had a large increase from 130 at admission to 191 at follow-up. Clients employed part-time also increased from 53 at admission to 68 at follow-up.

	OMS Sample with Follow-Up Interviews Completed N=362	
	<i>Employment asked at Admission</i> Abstinence % (N) [†]	<i>Employment asked at Follow-Up</i> Abstinence % (N) [†]
Employed Full Time (>35 hrs/ wk)	46.1 (60/130)	46.9 (89/191)
Employed Part Time (<35 hrs/ wk)	47.1 (25/53)	55.3 (37/68)
Unemployed (looking for work in the past 30 days)	53.4 (51/96)	46.1 (29/63)
Not in labor force	54.7 (45/83)	63.0 (26/41)

[†] The number of clients is rounded to the nearest integer but could contain a decimal point due to weighting of the data. Therefore, the numbers of clients are approximate but the percentages are accurate.

Table 19. Abstinence by Living Arrangements

The abstinence rate at follow-up for clients living alone at admission was 52.2% whereas clients who lived alone at follow-up had an abstinence rate of 42.5%. The number of clients living with parents decreased from 129 at admission to 95 at follow-up. The abstinence rate for clients living with parents at follow-up was 52.8%, however, the abstinence rate at follow-up for clients living with parents at admission was 44.1%. Clients living with other adults and children had high abstinence rates at admission and follow-up (76.4% and 66.8% respectively).

	OMS Sample with Follow-Up Interviews Completed N=362	
	<i>Living Arrangements asked at Admission</i> Abstinence % (N) [†]	<i>Living Arrangements asked at Follow-Up</i> Abstinence % (N) [†]
Alone	52.2 (22/42)	42.5 (20/47)
Parents	44.1 (57/129)	52.8 (50/95)
Significant Other Only	60.3 (23/38)	51.0 (23/46)
Significant Other and Children	55.1 (24/44)	48.7 (29/59)
Children Only	44.4 (6/13)	57.9 (10/18)
Other Adults	41.5 (27/64)	40.5 (24/59)
Other Adults and Children	76.4 (14/18)	66.8 (16/24)
Prison or Jail	100.0 (1/1)	0.0 (0)
Homeless	38.8 (1/2)	0.0 (1)
Half-way House	73.3 (8/10)	0.0 (0)
Hospital	0.0 (0)	0.0 (0)

[†] The number of clients is rounded to the nearest integer but could contain a decimal point due to weighting of the data. Therefore, the numbers of clients are approximate but the percentages are accurate.

Table 20. Abstinence by Relationship

Divorced clients had the highest abstinence rate of 68.7% at follow-up, followed closely by those clients who were cohabiting at admission with an abstinence rate of 67.7%. People who are in a stable relationship (married, 58.6%) or who have been divorced, 68.7%; separated, 57.4% tend to have higher abstinence rates.

	OMS Sample with Follow-Up Interviews Completed N=362	
	<i>Relationship asked at Admission</i> Abstinence %** (N) [†]	<i>Relationship asked at Follow-Up</i> Abstinence %* (N) [†]
Single	41.6 (86/206)	44.4 (86/194)
Married	61.5 (30/49)	58.6 (26/44)
Cohabiting	67.7 (22/32)	45.1 (26/57)
Separated	49.0 (8/16)	57.4 (10/17)
Divorced	62.6 (36/57)	68.7 (34/50)
Widowed	12.7 (0/1)	0.0 (0/0)

* Statistically significant (p<.01) * Statistically significant (p<.05)

[†] The number of clients is rounded to the nearest integer but could contain a decimal point due to weighting of the data. Therefore, the numbers of clients are approximate but the percentages are accurate.

Table 21. Abstinence by Income Source

The number of clients with no income decreased substantially at admission (N=64) and follow-up (N=2). Additionally, the number of clients reporting income through salary and wages increased from 169 at admission to 217 at follow-up. This supports the finding in Table 18 that more clients were successful in finding employment after treatment. Six clients reported disability income at admission and follow-up, and had one of the highest abstinence rates (73.9% and 68.3% respectively).

	OMS Sample with Follow-Up Interviews Completed N=362	
	<i>Income Source asked at Admission</i> Abstinence % (N) [†]	<i>Income Source asked at Follow-Up</i> Abstinence % (N) [†]
None	54.0 (35/64)	56.1 (1/2)
Wages/ Salary	45.1 (76/169)	48.8 (106/217)
Family/ Friends	57.2 (58/102)	51.2 (59/116)
Public Assistance	60.3 (4/7)	71.1 (6/9)
Retirement/ Pension	0.0 (0/1)	0.0 (0)
Disability	73.9 (4/6)	68.3 (4/6)
Other	30.0 (4/13)	40.6 (5/12)

[†] The number of clients is rounded to the nearest integer but could contain a decimal point due to weighting of the data. Therefore, the numbers of clients are approximate but the percentages are accurate.

Table 22. Abstinence by Income

Abstinence rates increased from 45.0% at admission to 56.2% at follow-up for clients earning \$500 or less. The number of clients reporting no income decreased substantially from 136 at admission to 58 at follow-up.

	OMS Sample with Follow-Up Interviews Completed N=313	
	<i>Income asked at Admission</i> Abstinence % (N) [†]	<i>Income asked at Follow-Up</i> Abstinence % (N) [†]
None	49.7 (68/136)	45.5 (26/58)
\$500 or less	45.0 (15/33)	56.2 (27/47)
\$501 to \$1000	54.2 (27/50)	53.6 (34/63)
\$1001 to \$2000	44.3 (32/71)	45.2 (44/97)
Over \$2000	43.9 (10/22)	43.1 (21/48)

[†] The number of clients is rounded to the nearest integer but could contain a decimal point due to weighting of the data. Therefore, the numbers of clients are approximate but the percentages are accurate.

Table 23. Abstinence by Arrests

At follow-up, 319 clients had not been arrested and slightly over 50% of the clients in this group were abstinent during the follow-up period. The number of clients indicating no arrests increased from 110 at admission to 319 at follow-up. Clients arrested 4 times or more decreased at follow-up.

	OMS Sample with Follow-Up Interviews Completed N=360	
	<i>Arrests asked at Admission</i> Abstinence % (N) [†]	<i>Arrests asked at Follow-Up</i> Abstinence % (N) [†]
None	55.9 (62/110)	50.6 (161/319)
1-3 times	46.6 (111/238)	47.6 (19/39)
4 times or more	65.5 (8/12)	0.0 (0/1)

[†] The number of clients is rounded to the nearest integer but could contain a decimal point due to weighting of the data. Therefore, the numbers of clients are approximate but the percentages are accurate.

Table 24. Behavioral change and abstinence at follow-up

A comparison of clients who were abstinent at follow-up versus clients who were not abstinent on the three variables in Table 24 reveals slight differences. The percentage of abstinent clients whose employment status changed between admission to treatment and follow-up was approximately nine percentage points higher than for clients who were not abstinent. Overall, clients who were abstinent at follow-up experience a higher percentage of behavioral changes than those clients who were not abstinent at follow-up.

	Abstinent N=182 [†]	Not Abstinent N=180 [†]
Percent that changed employment status	57.1	47.7
Percent the changed relationship status	30.3	27.8
Percent that changed income status	57.1	49.6

[†] The number of clients is rounded to the nearest integer but could contain a decimal point due to weighting of the data. Therefore, the number of clients is approximate.

Table 25. AA/NA meetings attended

Table 25 presents numbers showing that clients who were abstinent at follow-up attended an average of 3.4 AA, NA, or similar type meetings per month. This compares to an average of only 2.4 meetings per month for clients who were not abstinent during the follow-up period.

	Abstinent N=179 [†]	Not Abstinent N=181 [†]
Average number of NA/AA meetings attended per month since treatment ended	3.4	2.4

[†] The number of clients is rounded to the nearest integer but could contain a decimal point due to weighting of the data. Therefore, the number of clients is approximate.

Section G. Outcome: Arrests

Tables 26 through 31 examine arrest status in relation to other variables. For purposes of this report, clients were categorized as having at least one arrest since discharge from treatment or having no arrests since discharge.

Table 26. No Arrests by Primary Substance

Clients whose primary substance at admission was alcohol were arrest-free during the follow-up period at a rate of 90.7%. Clients reporting marijuana as their primary substance at admission were arrest-free at a rate of 86.8%, followed by methamphetamine (86.0%) and cocaine (79.2%).

OMS Sample with Follow-Up Interviews Completed (N=360)	
Primary Substance at Admission	No Arrest at follow-up % (N) [†]
Alcohol	90.7 (166/183)
Marijuana	86.8 (84/96)
Methamphetamine	86.0 (55/64)
Cocaine	79.2 (8/10)
Other Opiates and Synthetics	100.0 (2/2)
Heroin	100.0 (1/1)
Other Amphetamine	100.0 (1/1)
Benzodiazepines	100.0 (1/1)
Other Stimulants	100.0 (1/1)
PCP	0.0 (0/0)
Other	0.0 (0/0)
Barbiturates	0.0 (0/0)
Inhalants	0.0 (0/0)
Other Hallucinogens	0.0 (0/0)
Other Sedatives and Hypnotics	0.0 (0/0)
Over the Counter	0.0 (0/0)
Non-Prescription Methadone	0.0 (0/0)
Other Tranquilizers	0.0 (0/0)
Steroids	0.0 (0/0)
Ecstasy	0.0 (0/0)

[†] The number of clients is rounded to the nearest integer but could contain a decimal point due to weighting of the data. Therefore, the numbers of clients are approximate but the percentages are accurate.

Table 27. No Arrests by Employment

At follow-up, clients who were employed full-time were the most successful – 91.1% were arrest-free. Clients not in the labor force had the second highest arrest-free rate (88.8%).

	OMS Sample with Follow-Up Interviews Completed N=360	
	<i>Employment asked at Admission</i> No arrests % (N) [†]	<i>Employment asked at Follow-Up</i> No arrests % (N) [†]
Employed Full Time (>35 hrs/ wk)	89.7 (116/129)	91.1 (172/189)
Employed Part Time (<35 hrs/ wk)	87.5 (46/53)	85.7 (58/68)
Unemployed (looking for work in the past 30 days)	87.7 (83/96)	84.6 (53/63)
Not in labor force	89.9 (74/83)	88.8 (36/41)

[†] The number of clients is rounded to the nearest integer but could contain a decimal point due to weighting of the data. Therefore, the numbers of clients are approximate but the percentages are accurate.

Table 28. No Arrests by Living Arrangements

The largest number of clients reported living with “parents” at both admission and follow-up, although there was a slight decrease from 129 clients at admission to 95 at follow-up. All the clients who indicated “other adults and children,” “prison or jail,” or “homeless” at admission remained arrest-free at follow-up. Clients who are living with “significant other and children” at admission and follow-up remained arrest-free at high rates, 99.6% and 95.7% respectively. Somewhat surprisingly, high no-arrest rates also were found among clients living alone at admission (89.8%) and follow-up (94.5%).

	OMS Sample with Follow-Up Interviews Completed N=360	
	<i>Living Arrangements asked at Admission</i> No arrests %** (N) [†]	<i>Living Arrangements asked at Follow-Up</i> No arrests % (N) [†]
Alone	89.8 (38/42)	94.5 (44/46)
Parents	87.1 (113/129)	84.3 (80/95)
Significant Other Only	74.3 (28/38)	91.1 (42/46)
Significant Other and Children	99.6 (42/43)	95.7 (55/58)
Children Only	90.0 (11/13)	86.0 (15/18)
Other Adults	92.9 (59/64)	86.0 (51/59)
Other Adults and Children	100.0 (18/18)	94.8 (23/24)
Prison or Jail	100.0 (1/1)	0.0 (0/0)
Homeless	100.0 (2/2)	0.0 (0/0)
Half-way House	62.7 (7/10)	66.7 (9/14)
Hospital	0.0 (0/0)	0.0 (0/0)

** Statistically significant (p<.01)

[†] The number of clients is rounded to the nearest integer but could contain a decimal point due to weighting of the data. Therefore, the numbers of clients are approximate but the percentages are accurate.

Table 29. No Arrests by Relationship

Clients who were married at follow-up had the highest no-arrest rate (94.3%), with the exception of one client who was a widow at admission and was arrest-free at follow-up.

	OMS Sample with Follow-Up Interviews Completed N=360	
	<i>Relationship asked at Admission</i> No arrests % (N) [†]	<i>Relationship asked at Follow-Up</i> No arrests % (N) [†]
Single	88.9 (182/205)	87.7 (169/193)
Married	90.9 (45/49)	94.3 (42/44)
Cohabiting	86.1 (26/31)	88.6 (49/56)
Separated	77.3 (12/16)	88.4 (15/17)
Divorced	91.4 (53/57)	87.4 (43/50)
Widowed	100.0 (1/1)	0.0 (0/0)

[†] The number of clients is rounded to the nearest integer but could contain a decimal point due to weighting of the data. Therefore, the numbers of clients are approximate but the percentages are accurate.

Table 30. No Arrests by Income Source

All clients indicating “public assistance,” “retirement/pension,” or “other” as source of income at admission were arrest-free at follow-up. The number of clients reporting no income decreased substantially from admission (64) to follow-up (2, arrest-free at follow-up).

	OMS Sample with Follow-Up Interviews Completed N=360	
	<i>Income Source asked at Admission</i> No arrests % (N) [†]	<i>Income Source asked at Follow-Up</i> No arrests % (N) [†]
None	83.1 (53/64)	100.0 (2/2)
Wages/ Salary	88.5 (148/167)	88.6 (191/215)
Family/ Friends	90.7 (92/102)	89.1 (103/116)
Public Assistance	100.0 (7/7)	73.4 (6/9)
Retirement/ Pension	100.0 (1/1)	0.0 (0/0)
Disability	79.1 (5/6)	77.2 (4/6)
Other	100.0 (13/13)	100.0 (12/12)

[†] The number of clients is rounded to the nearest integer but could contain a decimal point due to weighting of the data. Therefore, the numbers of clients are approximate but the percentages are accurate.

Table 31. No Arrests by Income

Clients earning over \$2000 a month admission (100%) and follow-up (95.9%) had the highest arrest-free rates. The lowest arrest-free rate of 79.8% was found in those clients who reported earning “500 or less” at admission. Clients responding “none” to monthly income at admission had a no-arrest rate of 88.2%. Similarly, clients with no income at follow-up had a no-arrest rate of 88.6% at follow-up. The number of clients with no income decreased from 136 at admission to 58 at follow-up.

	OMS Sample with Follow-Up Interviews Completed N=313	
	<i>Income asked at Admission</i> No arrests % (N) [†]	<i>Income asked at Follow-Up</i> No arrests % (N) [†]
None	88.2 (120/136)	88.6 (51/58)
\$500 or less	79.8 (26/33)	84.3 (40/47)
\$501 to \$1000	89.2 (45/50)	84.2 (53/63)
\$1001 to \$2000	88.9 (63/71)	89.7 (87/97)
Over \$2000	100.0 (22/22)	95.9 (46/48)

[†] The number of clients is rounded to the nearest integer but could contain a decimal point due to weighting of the data. Therefore, the numbers of clients are approximate but the percentages are accurate.

Section H. Outcome: Employment

Tables 32 through 36 examine employment status in relation to other variables. For purposes of this report, clients were categorized as being employed full-time at follow-up or not being employed full-time at follow-up.

Table 32. Full Time Employment by Primary Substance

Table 32 shows that approximately 59% of the clients who reported alcohol as their primary substance at admission were employed full-time at follow-up. Clients whose primary substance was marijuana were working full-time at a rate of 45.7%, however, marijuana tends to be a drug of choice for adolescents, which would help explain the lower full-time employment rate.

OMS Sample with Follow-Up Interviews Completed (N=362)	
Primary Substance at Admission	Employed Full Time at follow-up % (N) [†]
Alcohol	58.7 (108/185)
Marijuana	45.7 (44/96)
Methamphetamine	50.7 (33/64)
Cocaine	55.5 (5/10)
Other Opiates and Synthetics	0.0 (0/2)
Heroin	0.0 (0/1)
Other Amphetamine	0.0 (0/1)
Benzodiazepines	0.0 (0/1)
Other Stimulants	0.0 (0/1)
PCP	0.0 (0/0)
Other	0.0 (0/0)
Barbiturates	0.0 (0/0)
Inhalants	0.0 (0/0)
Other Hallucinogens	0.0 (0/0)
Other Sedatives and Hypnotics	0.0 (0/0)
Over the Counter	0.0 (0/0)
Non-Prescription Methadone	0.0 (0/0)
Other Tranquilizers	0.0 (0/0)
Steroids	0.0 (0/0)
Ecstasy	0.0 (0/0)

[†] The number of clients is rounded to the nearest integer but could contain a decimal point due to weighting of the data. Therefore, the numbers of clients are approximate but the percentages are accurate.

Table 33. Full Time Employment by Living Arrangements

All clients living in halfway houses at admission were employed full-time at follow-up. Clients living alone at admission and follow-up had high full-time employment rates of 75.2% for the admission group and 75.8% for the follow-up group. Full-time employment rates are rather low among those clients who lived with parents at admission and follow-up. This is understandable, however, as many of these clients are adolescents and not in the work force.

	OMS Sample with Follow-Up Interviews Completed N=362	
	<i>Living Arrangements asked at Admission</i> Working full time %*** (N) [†]	<i>Living Arrangements asked at Follow-Up</i> Working full time %*** (N) [†]
Alone	75.2 (32/42)	75.8 (36/47)
Parents	37.1 (48/129)	32.6 (31/95)
Significant Other Only	42.0 (16/38)	57.7 (26/46)
Significant Other and Children	71.2 (31/44)	64.5 (38/59)
Children Only	56.0 (7/13)	52.0 (9/18)
Other Adults	55.9 (36/64)	53.1 (31/59)
Other Adults and Children	53.6 (10/18)	50.9 (12/24)
Prison or Jail	0.0 (0/1)	0.0 (0/0)
Homeless	27.4 (1/2)	0.0 (0/0)
Half-way House	100.0 (10/10)	49.2 (7/14)
Hospital	0.0 (0/0)	0.0 (0/0)

*** Statistically Significant (p>.001)

[†] The number of clients is rounded to the nearest integer but could contain a decimal point due to weighting of the data. Therefore, the numbers of clients are approximate but the percentages are accurate.

Table 34. Full Time Employment by Relationship

At follow-up, clients who reported being single at admission and follow-up were working full-time at rates of 47.0% and 48.3% respectively, the lowest employment rates among the relationship statuses. Of clients who were married at follow-up, 67.4% were working full-time. Similarly, 67.6% of clients who were married at admission were employed full-time at follow-up.

	OMS Sample with Follow-Up Interviews Completed N=362	
	<i>Relationship asked at Admission</i> Working full time % (N) [†]	<i>Relationship asked at Follow-Up</i> Working full time % (N) [†]
Single	47.0 (97/206)	48.3 (93/194)
Married	67.6 (33/49)	67.4 (30/44)
Cohabiting	48.5 (15/32)	53.8 (31/57)
Separated	62.1 (10/16)	64.1 (11/17)
Divorced	59.3 (34/57)	51.9 (26/50)
Widowed	87.3 (1/1)	0.0 (0/0)

[†] The number of clients is rounded to the nearest integer but could contain a decimal point due to weighting of the data. Therefore, the numbers of clients are approximate but the percentages are accurate.

Table 35. Full Time Employment by Income Source

Clients with income from wages at admission had a full-time employment rate at follow-up of 68.3% compared to an 81.4% rate for clients at follow-up. None of the clients who indicated “public assistance,” “disability,” or “other” at follow-up were employed full-time. Low employment rates were found among those clients whose income source was family and/or friends at admission (31.6%) and follow-up (12.2%). Presumably, these clients are adolescents and are not in the work force.

	OMS Sample with Follow-Up Interviews Completed N=362	
	<i>Income Source asked at Admission</i> Working full time %*** (N) [†]	<i>Income Source asked at Follow-Up</i> Working full time %*** (N) [†]
None	50.9 (33/64)	0.0 (0/2)
Wages/ Salary	68.3 (115/169)	81.4 (177/217)
Family/ Friends	31.6 (32/102)	12.2 (14/116)
Public Assistance	41.8 (3/7)	0.0 (0/9)
Retirement/ Pension	100.0 (1/1)	0.0 (0/0)
Disability	11.1 (1/6)	0.0 (0/6)
Other	45.2 (6/13)	0.0 (0/12)

*** Statistically significant (p<.001)

[†] The number of clients is rounded to the nearest integer but could contain a decimal point due to weighting of the data. Therefore, the numbers of clients are approximate but the percentages are accurate.

Table 36. Full Time Employment by Income

Most clients earned \$1001-\$2000. Clients in this category at admission had a full-time employment rate of 78.7% while clients in this category at follow-up had a full-time employment rate of 94.5% at follow-up. None of the clients reporting “none” for monthly income at follow-up were employed full-time at follow-up. Conversely, 44.6% of the clients who reported “none” at admission were employed full-time at follow-up.

	OMS Sample with Follow-Up Interviews Completed N=313	
	<i>Income asked at Admission</i> Working full time %*** (N) [†]	<i>Income asked at Follow-Up</i> Working full time %*** (N) [†]
None	44.6 (61/136)	0.0 (0/58)
\$500 or less	21.9 (7/33)	8.1 (4/47)
\$501 to \$1000	66.8 (34/50)	58.8 (37/63)
\$1001 to \$2000	78.7 (56/71)	94.5 (91/97)
Over \$2000	82.9 (18/22)	91.2 (44/48)

*** Statistically significant (p<.001)

[†] The number of clients is rounded to the nearest integer but could contain a decimal point due to weighting of the data. Therefore, the numbers of clients are approximate but the percentages are accurate.

Section I. Length of Stay

Length of stay is defined as the number of days from client admission through discharge and represents the number of days that the client had an active, open case with the treatment agency. The length of stay for clients in residential treatment is defined as the time they spend physically living at the treatment facility along with the number of days they participate in aftercare as an outpatient.

Percentages in the column titled “abstinence” refer to the percentage of clients that were abstinent during the follow-up period for each length of stay range. Number in parentheses represent the approximate number of clients who were abstinent and the approximate total number of clients who were in that length of stay range. For example, of the 18 clients who were in treatment less than seven days, 10 of them were abstinent at follow-up, equaling a success rate of 58.2%. Numbers in the “no arrests” and “employed full-time” columns are presented the same way as abstinence.

The follow-up interview took place approximately 6 months after the client was discharged from treatment. The follow-up period refers to the period of time between the client’s discharge and completion of the follow-up interview.

Table 37. Length of Stay by Outcomes

Clients who were in treatment at least four months (more than 120 days) had the most success and remained abstinent at a rate of 62.4%. The most common length of stay was 31-60 days while the least common was less than 7 days.

This table shows that the longer clients are in treatment, the less they are arrested. Clients who were in treatment 91-120 days had the highest no arrest rate (91.2%). Similarly, clients who remained in treatment 7-30 days had a no arrest rate of 90.8%. Clients who remained in treatment less than 7 days, however, had a no arrest rate of 84.4%, the lowest rate among length of stay categories.

Clients who remained in treatment the longest, more than 120 days, had a full-time employment rate of 58.5%. At follow-up, clients who had the shortest length of stay, less than 7 days, had the highest full-time employment rate of 62.9%.

Days of Treatment	OMS Sample with Follow-Up Interviews Completed		
	Abstinence % (N) [†] Total N=362	No arrest % (N) [†] Total N=362	Employed Full Time % (N) [†] Total N=362
Less than 7 days	58.2 (10/18)	84.4 (15/18)	62.9 (11/18)
7 - 30 days	51.7 (36/71)	90.8 (64/71)	44.8 (32/71)
31 - 60 days	41.8 (43/102)	87.7 (90/102)	51.7 (53/102)
61 - 90 days	47.6 (35/73)	89.4 (65/73)	56.7 (42/73)
91 - 120 days	54.4 (27/50)	91.2 (45/49)	51.1 (26/50)
More than 120 days	62.4 (29/47)	85.6 (40/47)	58.5 (28/47)

[†] The number of clients is rounded to the nearest integer but could contain a decimal point due to weighting of the data. Therefore, the numbers of clients are approximate but the percentages are accurate.

Admission data revealed four substances that clients repeatedly mentioned as their primary substance: alcohol, marijuana, methamphetamine, and cocaine (see Table 1). Table 38 presents the percent of clients in each length of stay category for these substances. The table also presents the average number of days in treatment when the client listed that substance as their primary substance at admission.

Table 38. Length of Stay by Primary Substance at Admission

Unlike previous tables in this section that include data only from clients who completed follow-up interviews, data in Table 38 are drawn from the entire 832 clients who were admitted during 2003.

The table shows that for clients whose primary substance at admission was marijuana, 4.9% were in treatment less than 7 days. This number was 6.3% for clients whose primary substance at admission was methamphetamine. Clients whose primary substance at admission was marijuana were in treatment an average of 73.4 days. This was the longest average length of stay of the four groups. Clients who listed cocaine as their primary substance had the shortest average length of stay in treatment at 51.3 days.

Primary Substance at Admission	Length of Treatment						Average # of days treated
	Less than 7 days %	7-30 days %	31-60 days %	61-90 days %	91-120 days %	More than 120 days %	
Alcohol N=385 [†]	14.8	16.0	28.2	17.9	9.4	13.7	64.4
Marijuana N=226 [†]	15.1	19.1	20.3	18.1	11.5	15.8	68.3
Methamphetamine N=174 [†]	14.6	24.6	18.1	15.7	10.0	17.1	65.9
Cocaine N=31 [†]	19.2	18.9	30.1	5.1	12.2	14.6	62.0

[†] The number of clients is rounded to the nearest integer but could contain a decimal point due to weighting of the data. Therefore, the number of clients is approximate.

Section J. Recommendations

- Consortium staff should consider providing a biannual newsletter to participating treatment centers to keep them informed about the OMS project.
- Clients that were not able to be located made up 17.5% of the closed cases. Perhaps Consortium staff could work with the treatment agencies to gather additional contact information at the time of admission to treatment.

APPENDIX: Presentation of Tracking Data

Table A1: Client Classification Codes	31
Diagram A1: All Clients--January 1 – December 31, 2003	32
Diagram A2: Adults--January 1 – December 31, 2003	33
Diagram A3: Adolescents--January 1 – December 31, 2003	34
Tracking Report for Clients Admitted in 2003	
Table A2. Case Status – All Clients	35
Table A3. Closed by Category- All Clients	35
Table A4. Rates for all Clients	35
Tracking Report for Clients Admitted in 2003—Adults	
Table A5. Case Status – Adults	36
Table A6. Closed by Category – Adults	36
Table A7. Rates for Adults only	36
Tracking Report for Clients Admitted in 2003--Adolescents	
Table A8. Case Status – Adolescents	37
Table A9. Closed by Category – Adolescents	37
Table A10. Rates for Adolescents only	37
Table A11. Client Contacts Closed Cases--Number and Type of Contact	38
OMS Client Contact Data--All Clients with Closed Cases	
Table A12. Clients - interview obtained	39
Table A13. Clients with no interview	39
Table A14. Average number of contacts and minutes per client	39

Several tracking categories are used in the OMS tracking database. These categories increase the understanding of what happens to individuals after they are discharged from treatment.

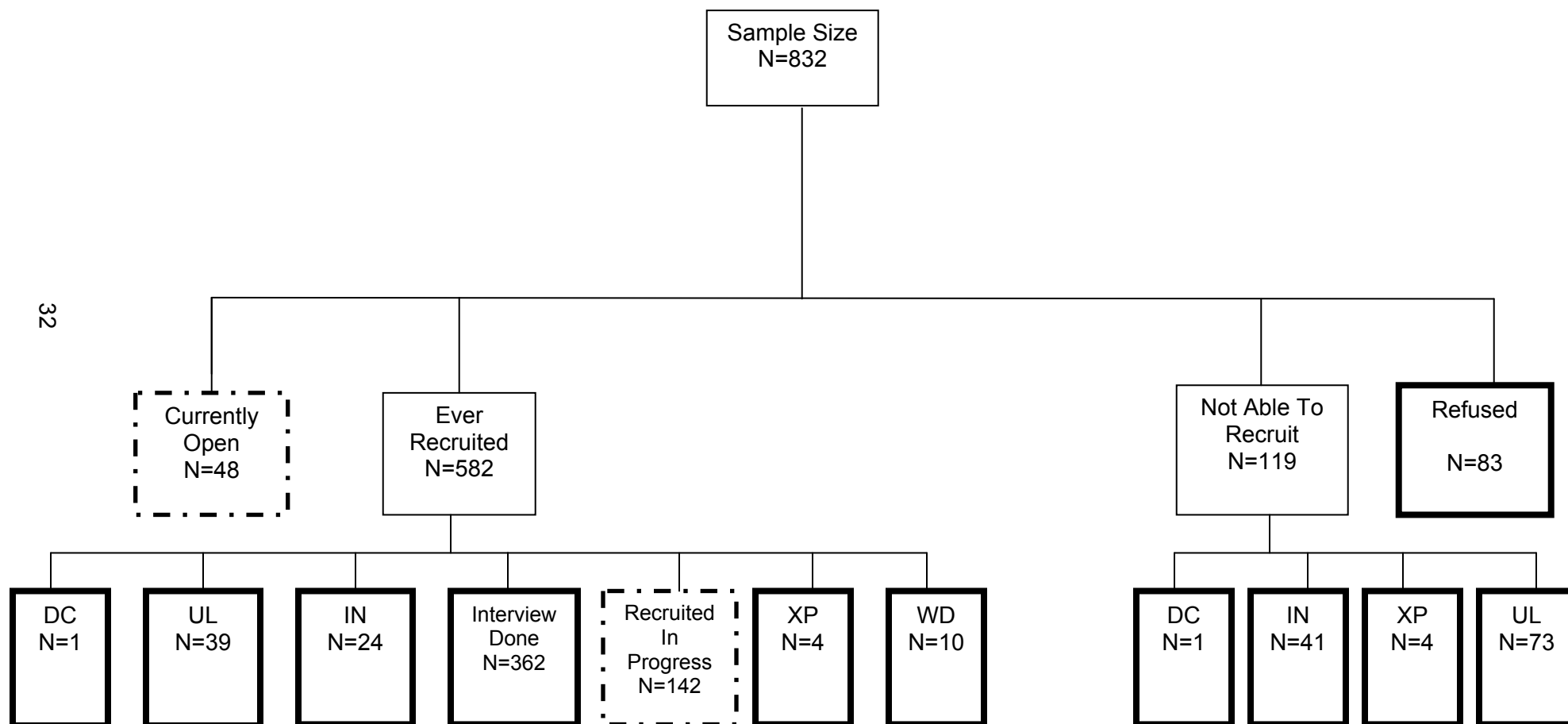
Table A1. Client Classification Codes

Sample Size	The total number of clients who have been randomly selected for inclusion in the OMS.
Currently Open	This includes clients that staff is actively trying to locate and recruit. Included are clients who are new to the sample, have been sent a letter, or have no working phone and have not yet responded to multiple letters.
Ever Recruited	This includes clients, who at some point, agreed to participate in the follow-up interview aspect of the OMS. Included are clients who were recruited but died before their interview date, were recruited but incarcerated at the time of their interview, were recruited but could not be located at the time of their interview, were recruited and interviewed, were recruited but waiting for their interview date, were recruited but their interview date had expired at the time the Consortium received notice of their discharge date, or were recruited but withdrew from the project.
Not Able to Recruit	This includes clients that staff has never been able to successfully contact. Included are clients who died before staff could contact them, clients who had not been successfully contacted and were incarcerated at the time of their interview date, clients who staff were unable to locate despite months of effort, and clients who had not been contacted but had a potential interview date that had already passed when the Consortium received notice of the client's discharge date.
Refused (RF)	Client refused participation in the follow-up interview aspect of the OMS. Case is immediately closed.
Deceased (DC)	Client died before recruitment or, if the client is recruited, before the interview could take place. Case is closed.
Withdrew (WD)	Client initially agreed to participate in the study but then decided not to participate in the project. Case is closed.
Expired (XP)	When OMS staff received SARS discharge date for a client from the treatment agency via the IDPH, the subsequent interview date had already expired. Client may or may not have been successfully recruited. Case is closed.
Recruited In Progress or Interview Done	Client agrees to take part in the follow-up interview aspect of the OMS. Client will receive update calls and/or letters until the interview date nears. Case will close when interview takes place.
Unable to Locate (UL)	OMS staff was not able to make contact with the client either via the telephone or mail system at time interview was due to take place. Client may have initially been contacted and successfully recruited. Case is closed.
Incarcerated (IN)	Client is incarcerated at the time their interview was due to take place. The client may or may not have been successfully recruited. Case is closed.

Diagram A1: Outcome Monitoring System

January 1 – December 31, 2003

All Clients*

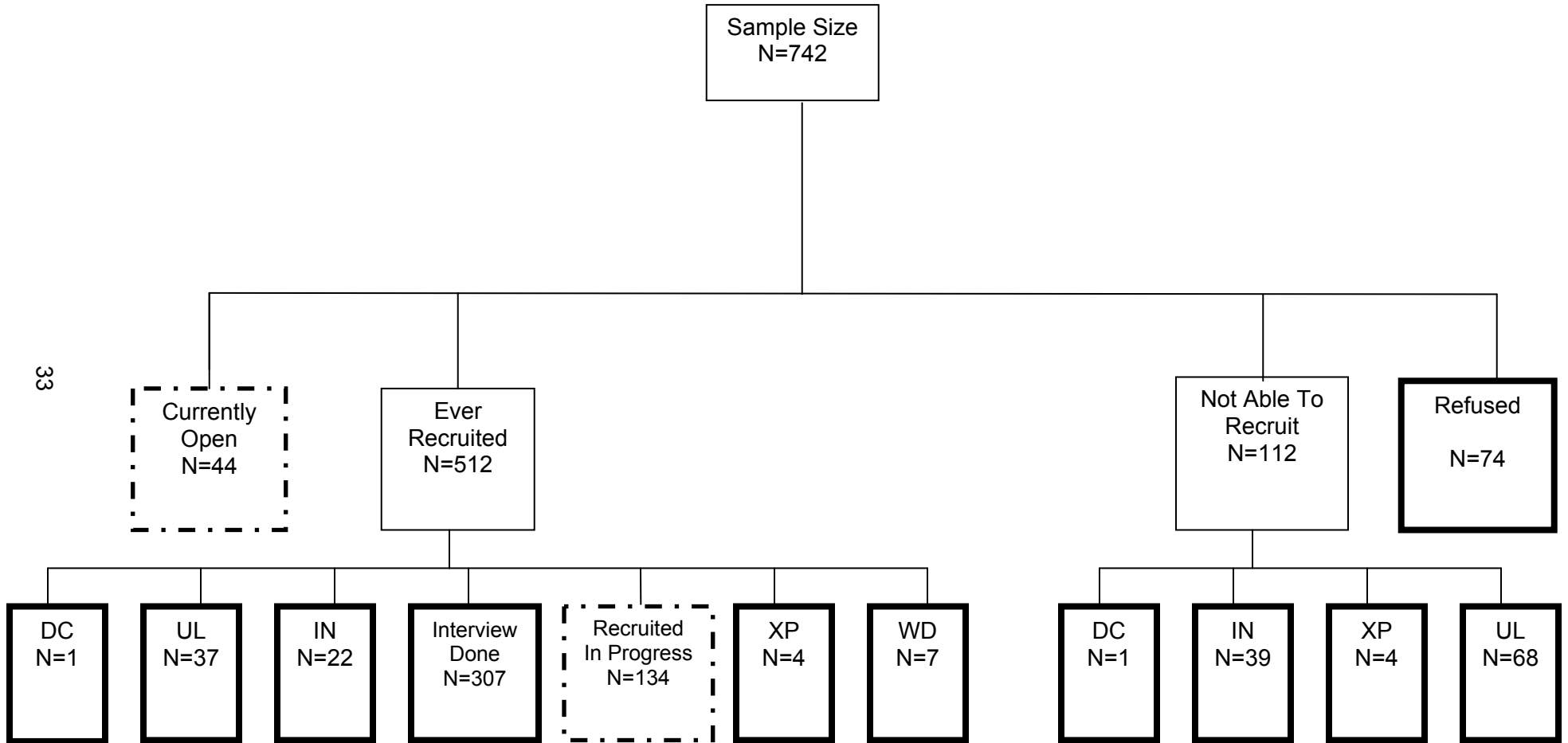


32

Key: DC= Deceased, UL=Unable to Locate, IN=Incarcerated, XP=Expired, WD= Withdrew

* Bolded boxes represent clients with a closed status. Dashed boxes represent clients with an open status (staff are attempting to locate, recruit, and/or interview the client.)

Diagram A2: Outcome Monitoring System January 1 – December 31, 2003 Adults*

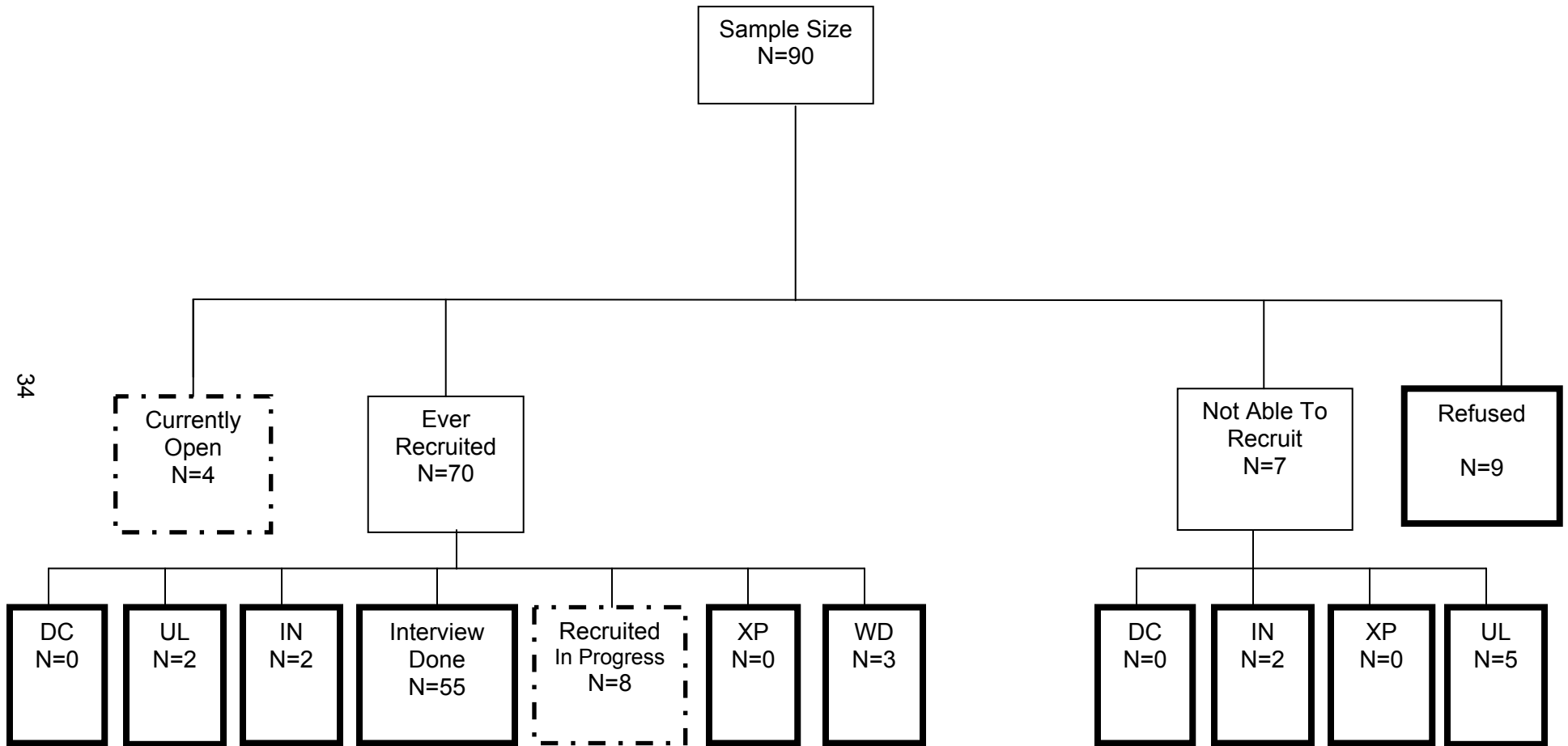


33

Key: DC= Deceased, UL=Unable to Locate, IN=Incarcerated, XP=Expired, WD= Withdrew

* Bolded boxes represent clients with a closed status. Dashed boxes represent clients with an open status (staff are attempting to locate, recruit, and/or interview the client.)

Diagram A3: Outcome Monitoring System January 1 – December 31, 2003 Adolescents*



34

Key: DC=Deceased, UL=Unable to locate, IN=Incarcerated, XP= Expired, WD=Withdraw

* Bolded boxes represent clients with a closed status. Dashed boxes represent clients with an open status (staff are attempting to locate, recruit, and/or interview the client.)

**Tracking Report for Clients Admitted in 2003
ALL CLIENTS - 832**

Table A2. Case Status – All Clients

Status	Number of clients
Open cases	190
Closed cases	642
Total	832

Table A3. Closed by Category- All Clients

Category name	Number of clients	Percentage of clients
Follow-up interview complete	362	56.4
Unable to locate	112	17.5
Refused participation	83	12.9
Incarcerated	65	10.1
Expired	8	1.3
Withdrew	10	1.6
Deceased	2	0.3
Total	642	100.0

[†] Due to rounding, percentages may not add up to exactly 100%.

Table A4. Rates for all Clients

Category	Percentage
Recruitment rate	87.5
Recruitment rate *	78.9
Refusal rate	12.5
Follow-up rate	62.2
Not able to recruit rate	18.5

* For information regarding this recruitment rate, refer to page 5 of the report.

**Tracking Report for Clients Admitted in 2003
ADULTS - 742**

Table A5. Case Status – Adults

Status	Number of clients
Open cases	178
Closed cases	564
Total	742

Table A6. Closed by Category - Adults

Category name	Number of clients	Percentage of clients
Follow-up interview complete	307	54.4
Unable to locate	105	18.6
Refused participation	74	13.1
Incarcerated	61	10.8
Expired	8	1.4
Withdrew	7	1.2
Deceased	2	0.4
Total	564	100.0

Table A7. Rates for Adults only

Category	Percentage
Recruitment rate	87.4
Recruitment rate *	78.3
Refusal rate	12.6
Follow-up rate	60.0
Not able to recruit rate	19.9

* For information regarding how this recruitment rate is calculated, refer to page 5

**Tracking Report for Clients Admitted in 2003
ADOLESCENTS - 90**

Table A8. Case Status – Adolescents

Status	Number of clients
Open cases	12
Closed cases	78
Total	90

Table A9. Closed by Category - Adolescents

Category name	Number of clients	Percentage of clients
Follow-up interview complete	55	70.5
Unable to locate	7	9.0
Refused participation	9	11.5
Incarcerated	4	5.1
Expired	0	0.0
Withdrew	3	3.9
Deceased	0	0.0
Total	78	100.0

Table A10. Rates for Adolescents only

Category	Percentage
Recruitment rate	88.6
Recruitment rate *	83.3
Refusal rate	11.4
Follow-up rate	78.6
Not able to recruit rate	9.0

* For information regarding how this recruitment rate is calculated, refer to page 5

**Table A11. Client Contacts Closed Cases
Number and Type of Contact**

Type of contact	Adolescent	Adult	Total
An outgoing phone call attempting to recruit client.	317	3425	3742
An outgoing phone call in which recruitment has actually taken place and the client has either agreed to participate or refused.	53	374	427
An incoming phone call in which recruitment has actually taken place and the client has either agreed to participate or refused.	22	189	211
An outgoing phone call attempting to update/check-in with client.	237	1585	1822
An incoming phone call from client or collateral contact (not from treatment agency).	39	321	360
An outgoing phone call attempting to reach client for the 6-month follow-up interview.	191	1131	1322
An outgoing phone call completing the 6-month follow-up interview.	46	228	274
An incoming phone call in with the 6-month follow-up interview is completed.	9	79	88
An outgoing phone call attempting to track client through collateral contacts.	37	883	920
Any incoming and outgoing attempts (phone call/letter/fax) to track client through original treatment agency.	19	537	556
(Other) Usually directory assistance or an Internet search, but also any call/contact that doesn't fall under any other category.	125	1283	1408
A letter sent to contact client; includes letters that have been returned and notification of address changes from post office; outgoing or incoming.	225	2721	2946
Sum of all types of client contacts	1320	12756	14076
Sum of minutes for all types of client contacts	9984	93696	103680
Average of # client contacts per closed client	16.9	22.6	21.9
Average of # minutes per closed client	127.5	165.6	160.9

OMS CLIENT CONTACT DATA

All Clients with Closed Cases *

Table A12. Clients - interview obtained

Status	Clients	Contacts	Minutes	Letters
Total Interviews Completed	362	6458	51765	1195

Table A13. Clients with no interview

Status	Clients	Contacts	Minutes	Letters
Unable to Locate	112	2732	18595	748
Refused	83	700	4770	129
Incarcerated	65	1063	6860	211
Expired	8	91	605	9
Withdrew	10	163	1040	23
Deceased	2	36	220	4
Grand Total	280	4785	32090	1124

Table A14. Average number of contacts and minutes per client

Status	Clients	Contacts	Contacts (Mean)	Minutes	Minutes (Mean)
Interviews Completed	362	6458	17.8	51765	143.0
Unable to Locate	112	2732	24.4	18595	166.0
Refused	83	700	8.4	4770	57.5
Incarcerated	65	1063	16.4	6860	105.5
Expired	8	91	11.4	605	75.6
Withdrew	10	163	16.3	1040	104.0
Deceased	2	36	18.0	220	110.0

* Information in Tables A12 through A14 represents only closed cases. Cases are closed for 76.9% of the 832 clients in this report.