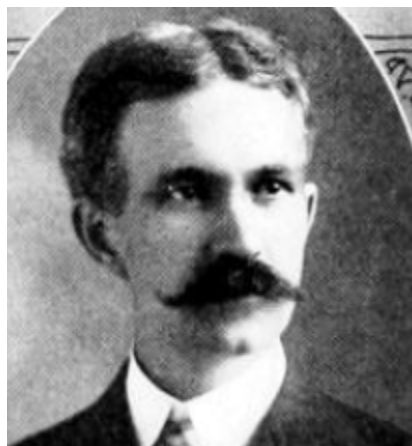


HERMANN KULL,

Representative from Howard county, was born on a farm in the town of Bloomfield, Walworth county, Wisconsin, March 14, 1876, of German-American parentage. His grandparents were pioneers in southeastern Wisconsin at the opening of settlement there in 1837. He was educated in the district school, in the Lake Geneva High School and in the University of Wisconsin. Was married in the year 1900 and in the spring of that year removed to his farm in New Oregon township, Howard county, where he has since been engaged in general farming. Elected Representative in 1906, re-elected in 1908 and 1910. A Democrat in politics.



HERMANN KULL,

Representative from Howard county, was born on a farm in the town of Bloomfield, Walworth county, Wisconsin, March 14, 1876, of German-American parentage. His grandparents were pioneers in southeastern Wisconsin at the opening of settlement there in 1837. He was educated in the district school, in the Lake Geneva High School and in the University of Wisconsin. Was married in the year 1900 and in the spring of that year removed to his farm in New Oregon township, Howard county, where he has since been engaged in general farming. Elected Representative in 1906 and re-elected in 1908. A Democrat in politics.

HERMANN KULL,

Representative from Howard county, was born on a farm in the town of Bloomfield, Walworth county, Wisconsin, March 14, 1876, of German-American parentage. His grandparents were pioneers in southeastern Wisconsin at the opening of settlement there in 1837. He was educated in the district school, in the Lake Geneva High School and in the University of Wisconsin. Was married in the year 1900 and in the spring of that year removed to his farm near the town of Oregon, Howard county, where he has since been engaged in general farming. Elected Representative in 1906. A Democrat in politics.