

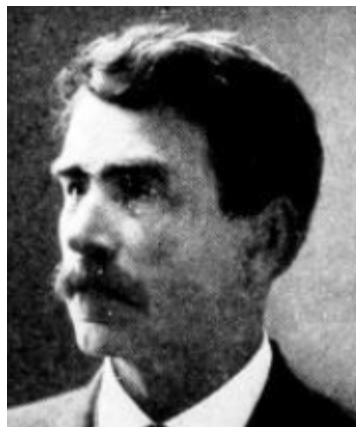
ELI C. PERKINS,

Senator from Thirty-third district, composed of Buchanan and Delaware counties, was born of New England parentage at Bethel, Maine, August 30, 1850, Graduated at Lenox College in 1875 and from the law department of the State University of Iowa with the class of 1879. Commenced the practice of law in the fall of 1879 at Delhi, Delaware county, Iowa, and has practiced continuously from that time. Was county attorney of Delaware county from 1887 to 1893. Elected representative in 1908 and re-elected in 1910. Elected senator in 1912. A republican in politics.



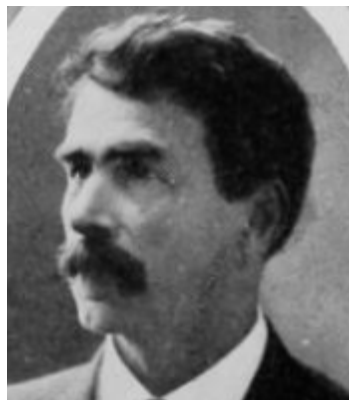
**ELI C. PERKINS,**

Senator from the Thirty-third district, composed of Buchanan and Delaware counties, was born of New England parentage at Bethel, Maine, August 30, 1850. Graduated at Lenox College in 1875 and from the law department of the State University of Iowa with the class of 1879. Commenced the practice of law in the fall of 1879 at Delhi, Delaware county, Iowa, and has practiced continuously from that time. Was county attorney of Delaware county from 1887 to 1893. Elected representative in 1908 and re-elected in 1910. Elected senator in 1912. A republican in politics.



ELI C. PERKINS,

Representative from Delaware county, was born of New England parentage at Bethel, Maine, August 30, 1850. Graduated at Lenox College in 1875 and from the law department of the State University of Iowa with the class of 1879. Commenced the practice of law in the fall of 1879 at Delhi, Delaware county, Iowa, and has practiced continuously from that time. Was county attorney of Delaware county from 1887 to 1893. Elected Representative in 1908 and re-elected in 1910. A Republican in politics.



ELI C. PERKINS,

Representative from Delaware county, was born of New England parentage at Bethel, Maine, August 30, 1850. Graduated at Lennox College in 1875 and from the law department of the State University of Iowa with the class of 1879. Commenced the practice of law in the fall of 1879 at Delhi, Delaware county, Iowa, and has practiced continuously from that time. Was county attorney of Delaware county from 1887 to 1893. Elected Representative in 1908. A Republican in politics.