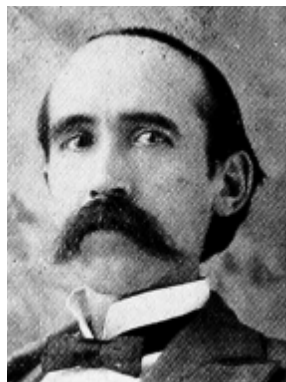


JOHN M. LINDLY.

Senator from the tenth district, composed of the counties of Henry and Washington, was born in Washington county, Pennsylvania, in 1866. When but a few months old, was brought by his parents to Winfield, Henry county, Iowa, which has since been his home. His father, B. B. Lindly, and mother, Clarrist Hanna Lindly, are descendants from some of the earliest settlers in the American colonies. After completing the course of study in the Winfield school, he graduated from the State University of Iowa. He has been cashier of the bank of Winfield for the last twenty years; secretary of the board of education of Winfield for the last sixteen years; secretary of the Iowa Pharmaceutical association six years and its treasurer for the last four years; has been clerk of the town of Winfield, and was at one time elected mayor without opposition; was nominated for treasurer of Henry county in 1891. He has at times taken an active part in the affairs of the Iowa Bankers association of which he is a member. Elected senator in 1914. A democrat in politics.



JOHN M. LINDLY,

Senator from the Tenth district, composed of the counties of Henry and Washington, was born in Washington county, Pennsylvania, in 1866. When but a few months old, was brought by his parents to Winfield, Henry county, Iowa, which has since been his home. His father, B. B. Lindly, and mother, Clarriet Hanna Lindly, are descendants from some of the earliest settlers in the American colonies. After completing the course of study in the Winfield school, he graduated from the State University of Iowa. He has been cashier of the bank of Winfield for the last twenty years; secretary of the board of education of Winfield for the last sixteen years; secretary of the Iowa Pharmaceutical association six years and its treasurer for the last four years; has been clerk of the town of Winfield, and was at one time elected mayor without opposition; was nominated for treasurer of Henry county in 1891. He has at times taken an active part in the affairs of the Iowa Bankers association of which he is a member. Elected senator in 1914. A democrat in politics.