



THOMAS F. GRIFFIN.

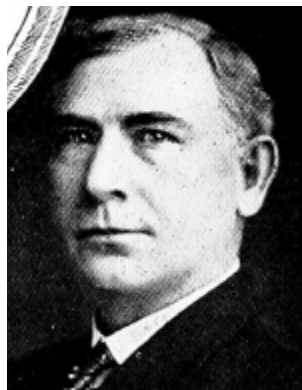
One of the representatives from Woodbury county, was born on a farm in Howard county, Iowa, April 19, 1865. His parents were among the early settlers in that part of the state, having come to Howard county in the fifties. He was educated in the common schools and taught several terms of

school. He studied law at the University of Notre Dame and graduated from that institution in June, 1888. He was admitted to the bar in October of the same year and has been engaged in the practice of law at Sioux City since that time. In 1891 he was married to Miss Rose Hartnett. Elected representative in 1912. Re-elected in 1914, 1916 and 1918. A republican in politics.



THOMAS F. GRIFFIN.

One of the representatives from Woodbury county, was born on a farm in Howard county, Iowa, April 19, 1865. His parents were among the early settlers in that part of the state, having come to Howard county in the early fifties. He was educated in the common schools and taught several terms of school. He studied law at the University of Notre Dame and graduated from that institution in June, 1888. He was admitted to the bar in October of the same year and has been engaged in the practice of law at Sioux City since that time. In 1891 he was married to Miss Rose Hartnett. Elected representative in 1912. Re-elected in 1914 and 1916. A republican in politics.



THOMAS F. GRIFFIN,

Representative from Woodbury county, was born on a farm in Howard county, Iowa, April 19, 1865. His parents were among the early settlers in that part of the state, having come to Howard county in the early fifties. He was educated in the common schools and taught several terms of school. He studied law at the University of Notre Dame and graduated from that institution in June, 1888. He was admitted to the bar in October of the same year and has been engaged in the practice of law at Sioux City since that time. In 1891 he was married to Miss Rose Hartnett. They have two sons. Elected representative in 1912. Re-elected in 1914. A republican in politics.



THOMAS F. GRIFFIN,

Representative from Woodbury county, was born on a farm in Howard county, Iowa, April 19, 1865. His parents were among the early settlers in that part of the state, having come to Howard county in the early fifties. He was educated in the common schools and taught several terms of school. He studied law at the University of Notre Dame and graduated from that institution in June, 1888. He was admitted to the bar in October of the same year and has been engaged in the practice of law at Sioux City since that time. In 1891 he was married to Miss Rose Hartnett. They have two sons. Elected representative in 1912. A republican in politics.