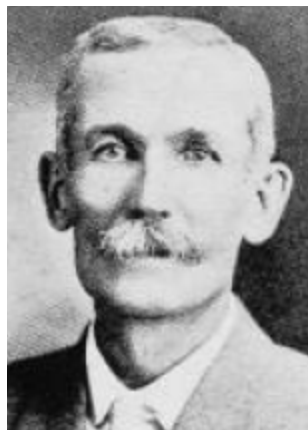




G. A. JUSTICE

Representative from Shelby county, was born in 1857, on a farm in Linn county near Marion Iowa. His father and mother, John and Margaret Justice, natives of Pennsylvania, immigrated to Iowa in the early fifties, moved to Jones county in 1865, where the subject of this sketch received his education in the common schools with one year in the high school of Mechanicsville; went to Shelby county in the spring of 1881 where he has since been engaged in farming and stock raising; was married to Clara E. Miller of Morley, Iowa, in 1881; served two terms as member of board of supervisors; elected representative in 1918 and 1920. Republican in politics.



G. A. JUSTICE.

Representative from Shelby county, was born in 1857, on a farm in Linn county near Marion, Iowa. His father and mother, John and Margaret Justice, natives of Pennsylvania, immigrated to Iowa in the early fifties, moved to Jones county in 1865, where the subject of this sketch received his education in the common schools with one year in the high school of Mechanicsville; went to Shelby county in the spring of 1881 where he has since been engaged in farming and stock raising; was married to Clara E. Miller of Morley, Iowa, in 1881; served two terms as member of board of supervisors; elected representative in 1918. Republican in politics.