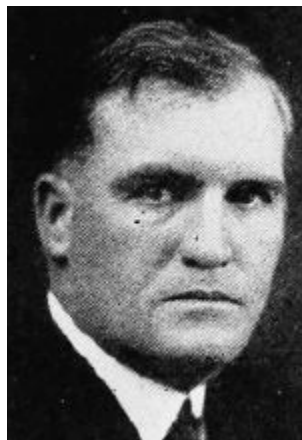


**C. F. Latta.**—Representative from Washington county, was born December 14, 1877, in Washington county. He was married August 9, 1898, to Zelma M. Sawyers. The family consists of three children, one girl and twin boys. Educated in the rural and public schools of Washington county, and Parsons college at Fairfield. In church affiliations, a Presbyterian. Member of the Washington county farm bureau, Knights Templar and Shrine. Elected representative in 1920 and re-elected in 1922. In politics a republican.



C. F. LETTS

Representative from Washington county, was born on a farm in Washington county. His father, David G. Letts, was born in Louisa county. His mother, Hannah Gale Dickenson Letts, was born in Muscatine county. He was married August 9, 1898, to Zelma M. Sawyers. Family consists of three children, one girl and twin boys. Educated in the rural and public schools of Washington county, and Parsons college at Fairfield, Iowa. In church affiliations, a Presbyterian. President of the Washington County Farm Bureau, Knight Templar and Shriner. Politics, republican.