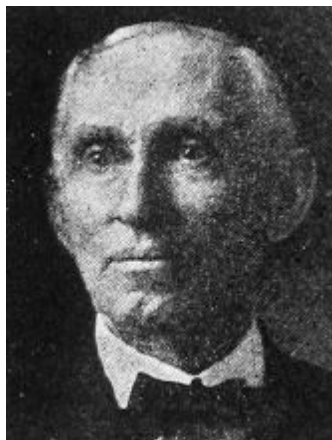


JOHN BRADLEY.—Representative from Poweshiek county; born in Bureau county, Ill., April 2, 1864. Came to Iowa with his parents in 1868 and settled on a farm near Montezuma. Attended the rural schools and remained on the farm with his father until twenty-one years of age. Took a business course at Elliott's Business college, Burlington, Iowa. Taught school for a number of years. Was engaged in the clothing business in Montezuma from 1894 to 1906. Since that time has been engaged in farming. Was married in 1896 to Miss Lillian Aiken, of Mahaska county, Iowa. Have three children, Grace, Harry and Helen. Was elected representative in 1918 and re-elected in 1920. A republican in politics.



JOHN BRADLEY

Representative from Poweshiek county. Born in Bureau county, Ill., April 2, 1864. Came to Iowa with his parents in 1868 and settled on a farm near Montezuma. Attended the rural schools and remained on the farm with his father until twenty-one years of age. Took a business course at Elliott's Business college, Burlington, Iowa. Taught school for a number of years. Was engaged in the clothing business in Montezuma from 1894 to 1906. Since that time has been engaged in farming. Was married in 1896 to Miss Lillian Aiken of Mahaska county, Iowa. Have three children, Grace, Harry and Helen. Was elected representative in 1918 and re-elected in 1920. A republican in politics.



JOHN BRADLEY,

Representative from Poweshiek county, was born in Bureau county, Illinois, April 2, 1864. In 1868, his parents settled on a farm near Montezuma. Attended rural schools and aided his father on the farm until twenty years of age. Took a business course at Elliott's Business College, Burlington, Iowa. Taught school for a number of years. In 1894 embarked in the clothing business with J. E. Anderson, and in 1906 sold his interest and purchased a farm near Montezuma, which he now operates. Was married in 1906 to Miss Lillian Alkin of Mahaska county. Have three children, Grace, Harry and Helen. The entire family are members of the M. E. church. Served as township trustee for two terms and the county board of supervisors for four years. Elected in 1918. Republican in politics.