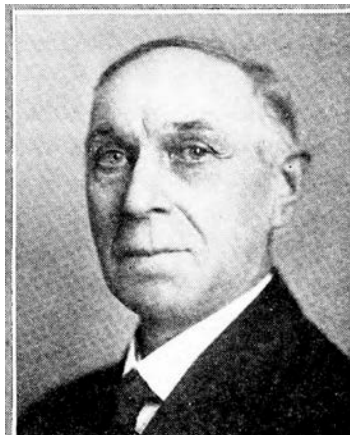


H. H. SCHULTE.—Representative from Worth county, was born on a farm in Clayton county, November 19, 1863. Received a common school and high school education. Was married to Margaret Bierbaum February 28, 1889. In the spring of 1889 moved from Clayton county to a farm in Worth county, where they now reside. Has served as township trustee for ten terms and four years as county assessor, and has been president of the Farmers' Savings bank of Manly, Iowa, since 1911. He and his family are members of the Evangelical church. Elected representative in 1920, re-elected in 1922 and 1924. A republican in politics.



H. H. SCHULTE.—Representative from Worth county, was born on a farm in Clayton county, November 19, 1863. Received a common school and high school education. Was married to Margaret Bierbaum February 28, 1889. In the spring of 1889 moved from Clayton county to a farm in Worth county, where they now reside. Has served as township trustee for ten terms and four years as county assessor, is president of the Farmers' Savings bank of Manly, Iowa, since 1911. He and his family are members of the Evangelical church. Elected representative in 1920 and re-elected in 1922. A republican in politics.



H. H. SCHULTE

Representative of Worth county, born on a farm in Clayton county, November 19, 1863. Received a common school and high school education in the schools of this county. Was married to Margaret Bierbaum February 28, 1889. In the spring of 1899 moved from Clayton county on to a farm four and one-half miles west of Manly in Worth county, where they now reside. Has served as township trustee for ten terms and four years as county assessor, is president of the Farmers Savings Bank of Manly, Iowa, since 1911. He and his family are members of the Evangelical church. Elected representative in 1920. A republican in politics.