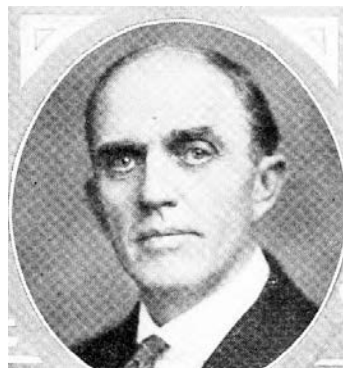


WILLIAM SCHMEDIKA.—Senator from the thirty-seventh district, composed of the counties of Hamilton, Hardin and Wright, was born in Shellsburg, Wis., August 19, 1869. In 1875 his parents moved to Hardin county, Iowa, settling in the western part of the county. His early boyhood days were spent on the farm and attending the rural school. Later he attended the Dexter Normal school at Dexter, Iowa. He has lived on the farm all his life, for years farming in the summer and teaching school in the winter. Later he quit teaching and farmed extensively, together with buying, feeding and shipping live stock. Also a heavy writer of fire insurance, being with the Farmers of Cedar Rapids thirty years. In 1889 he was united in marriage with Clara Awe. To them were born two boys and two girls. His wife died in 1907. He is a member of the K. of P. lodge. Was elected representative in 1914; and in 1923 was elected senator to fill vacancy caused by the death of D. C. Chase. Elected senator as an independent.



**WILLIAM SCHMEDIKA.**—Senator from the thirty-seventh district, composed of the counties of Hamilton, Hardin and Wright, was born in Shellsburg, Wis., August 19, 1869. In 1875 his parents moved to Hardin county, Iowa, settling in the western part of the county. His early boyhood days were spent on the farm and attending the rural school. Later he attended the Dexter Normal school at Dexter, Iowa. He has lived on the farm all his life, for years farming in the summer and teaching school in the winter. Later he quit teaching and farmed extensively, together with buying, feeding and shipping live stock. Also a heavy writer of fire insurance, being with the Farmers of Cedar Rapids thirty years. In 1889 he was united in marriage with Clara Awe. To them were born two boys and two girls. His wife died in 1907. He is a member of the K. of P. lodge. Was elected representative in 1914; and in 1923 was elected senator to fill vacancy caused by the death of D. C. Chase. Elected senator as an independent.



WILLIAM SCHMEDIKA,

Representative from Hardin county, was born in Shellsburg, Wisconsin, August 19, 1869. In 1875 his parents moved to Hardin county, Iowa, settling in the western part of the county. His early boyhood days were spent on the farm helping his parents and attending the rural school. Later he attended the Dexter Normal School at Dexter, Iowa. He has lived on the farm all his life, farming in the summer and teaching school in the winter. Later he quit teaching and farmed extensively, together with buying, feeding and shipping live stock. Also a heavy writer of fire insurance, being with the Farmers of Cedar Rapids twenty-three years. In 1889 he was united in marriage with Clara Awe. To them were born two boys and two girls. His wife died in 1907. Is a member of K. of P. lodge. Never held any political office, always a worker in the ranks. In politics a democrat. \*