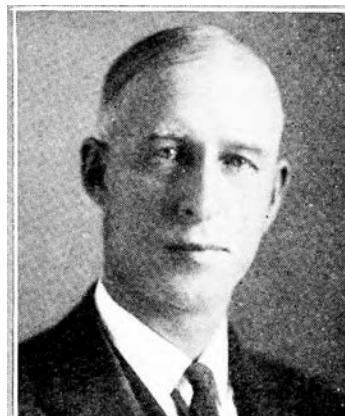


CHARLES RHINEHART.—Representative from Dallas county, was born in Dallas county, March 4, 1876; was reared on a farm; graduated from Iowa State college, 1899; married to Frances B. Schamel, 1906; has two children, Helen Louise and John Schamel. A member of the Sons of the American Revolution, Sons of Veterans, Odd Fellows and Masonic lodges. A farmer by occupation and republican in politics.



CHARLES RHINEHART.—Representative from Dallas County, was born in Dallas county March 4, 1876; was reared on a farm; graduated from Iowa state college in 1899; married to Frances B. Schamel, 1906; has two children. A member of the Sons of the American Revolution, Sons of Veterans, Odd Fellows and Masonic lodges. A farmer by occupation and republican in politics.