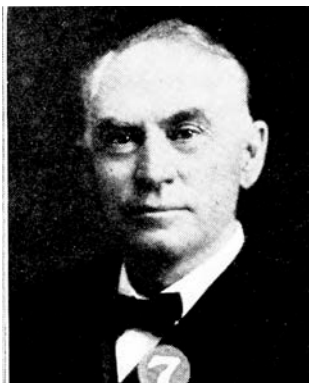


T. E. POWERS.—Representative from Page county, was born on a farm in that county that is now part of the city of Clarinda, his home. He attended Clarinda high school and after graduation attended the state university of Iowa and later graduated in medicine from the Washington university at St. Louis in 1881. He then practiced medicine in St. Louis as assistant to one of his university teachers. After practicing there a few months he was obliged to return to Clarinda on account of the illness of his father, and has continued to practice in Clarinda up to the present time. He was married to Miss Anna Peterson, one of his class mates, in 1882. Elected representative in 1922. Re-elected in 1924. A republican.



T. E. POWERS.—Representative from Page county, was born on a farm in that county that is now part of the city of Clarinda, his home. He attended Clarinda high school and after graduation attended the state university of Iowa and later graduated in medicine from the Washington university at St. Louis in 1881. He then practiced medicine in St. Louis as assistant to one of his university teachers. After practicing there a few months he was obliged to return to Clarinda on account of the illness of his father, and has continued to practice in Clarinda up to the present time. He was married to Miss Anna Peterson, one of his class mates, in 1882.