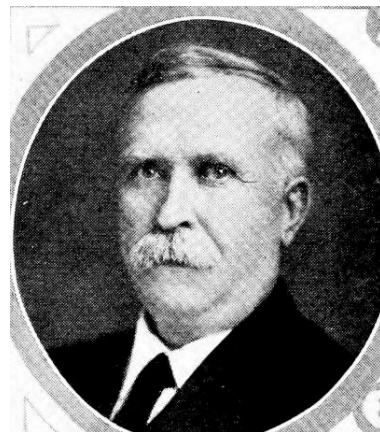


OLE NATVIG.—Representative from Howard county, was born in Norway in 1863 and came to the United States in 1867 with his parents who settled in Chickasaw county, Iowa. Attended public school in the winter and worked on a farm in the summer until he was sixteen years of age. Attended normal school at Decorah in the winter for three successive winters and worked on the farm in the summer. Moved to Howard county in 1881 and has resided there ever since. Has been a farmer all the time and on the board of directors of the First National bank, Cresco, Iowa. Is married and has four children. Has been a member of the Lutheran faith since childhood. Was elected representative in 1922 and re-elected in 1924. Republican in politics.



OLE NATVIG.—Representative from Howard county, was born in Norway in 1863 and arrived in the United States in 1867 and lived in Chickasaw county, Iowa. Attended public schools in the winter and worked on a farm in the summer until he was sixteen years of age. Attended normal school at Decorah in the winter for three successive winters and worked on the farm in the summer. Moved to Howard county in 1881 and has resided there ever since. Has been a farmer all the time and on the board of directors of the First National bank, Cresco, Iowa. Is married and has four children. Has been a member of the Lutheran faith since childhood. Was elected representative in 1922. Republican in politics.