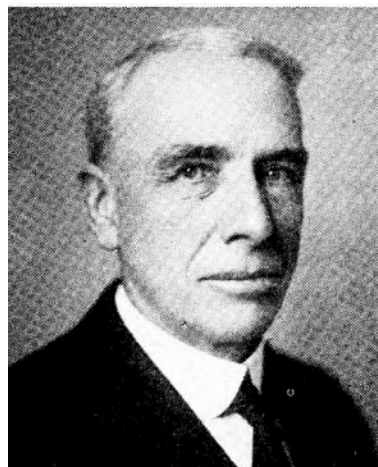




WM. L. LONG.—Representative from Jefferson county, was born in Fairfield Iowa, December 27, 1860. Worked on a farm in Jefferson county, when a boy. Has been clerk of the district court of Jefferson county, city clerk of the city of Fairfield, superintendent of the Fairfield waterworks, superintendent of the Fairfield light plant, clothing merchant, and is now a real estate broker. Elected representative in 1918, 1920, 1922 and 1924. Is a Royal Arch Mason and Son of the American Revolution. A republican in politics.



WM. L. LONG.—Representative from Jefferson county, was born in Fairfield, Iowa, December 27, 1860. Worked on a farm in Jefferson county, when a boy. Has been clerk of the district court of Jefferson county, city clerk of the city of Fairfield, superintendent of the Fairfield waterworks, superintendent of the Fairfield light plant, clothing merchant, and is now a real estate broker. Elected representative in 1918, 1920 and 1922. Is a Royal Arch Mason and Son of the American Revolution. A republican in politics.



WM. L. LONG

Representative from Jefferson county, was born in Fairfield, Iowa, December 27, 1860. Worked on a farm in Jefferson county, when a boy. Has been clerk of the district court of Jefferson county, city clerk of the city of Fairfield, superintendent of the Fairfield water works, superintendent of the Fairfield light plant, clothing merchant, and is now a real estate broker. Elected representative in 1918 and 1920. Is a Royal Arch Mason and Son of the American Revolution. A republican in politics.



WM. L. LONG,

Representative from Jefferson county, was born in Fairfield, Iowa, December 27, 1860. Worked on a farm in Jefferson county, when a boy. Has been clerk of the district court of Jefferson county, city clerk of the city of Fairfield, superintendent of the Fairfield water works, superintendent of the Fairfield light plant, clothing merchant, and is now a real estate broker. Elected representative in 1918. Is a Royal Arch Mason and Son of the American Revolution. A republican in politics.