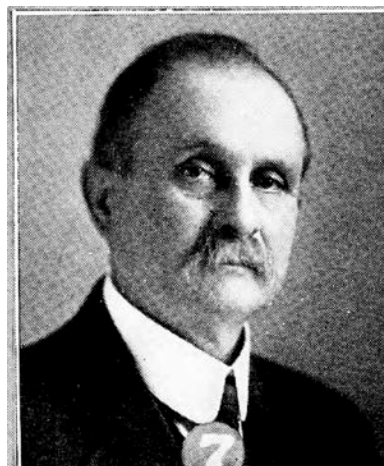




S. L. GRAHAM.—Representative from Wapello county, was born in Washington county, Pennsylvania. Attended the graded and high school, student at Washington and Jefferson college. Graduated at Waynesburg college, Pennsylvania. Took course in Yale law school in constitutional and commercial law. Was principal of a graded school, city superintendent and county superintendent, DeKalb county, Illinois. Engaged in business about fifteen years. Present business, city and farm investments. Masonic degrees including Shrine, Elks, I. O. O. F., M. W. of A., Yeomen, Commercial club. Married Lulu Stoner, 1913. Residence, Ottumwa. Elected representative 1920, 1922, and 1924.



S. L. GRAHAM.—Representative from Wapello county, was born in Washington county, Penn. Attended the graded and high school, student at Washington and Jefferson college. Graduated at Waynesburg college, Pa. Took course in Yale law school in constitutional and commercial law. Was principal of a graded school, city superintendent and county superintendent, DeKalb county, Ill. Engaged in business about fifteen years. Present business, city and farm investments. Masonic degrees including Shrine, Elks, I. O. O. F., M. W. of A., Yeomen, Commercial club. Married Lulu Stoner, 1913. Residence, Ottumwa. Elected representative 1920 and 1922.



S. L. GRAHAM

Born in Washington county, Pennsylvania. Attended the graded and high school, student at Washington and Jefferson college. Graduated at Waynesburg college, Pa. Took course in Yale law school in constitutional and commercial law. Was principal of a graded school, city superintendent and county superintendent, DeKalb county, Illinois. Engaged in business about fifteen years. Present business, city and farm investments. Masonic degrees including Shrine. Elks, I. O. O. F., M. W. A., Yeomen, Commercial Club. Married Lulu Stoner, 1913. Residence, Ottumwa. Representative in State Legislature 1921-22.