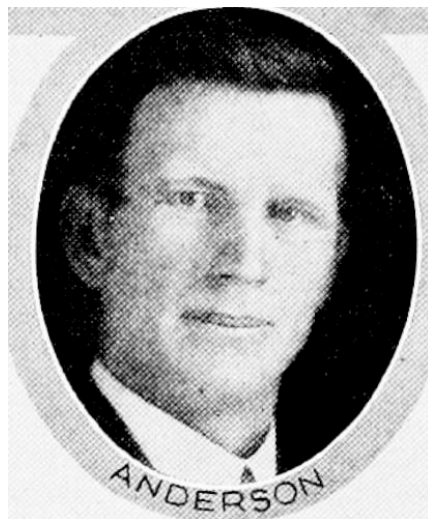


C. E. ANDERSON.—Senator from the twenty-seventh district consisting of Webster and Calhoun counties, was born on a farm near Stratford, Iowa, June 24, 1886. His parents, C. G. and Clara Anderson, were among the early settlers of the Stratford community. Received his early education in the rural schools and the Stratford high school. At the age of twenty-seven he was appointed city marshal and street commissioner of Stratford. Has served as constable, president of the school board, republican township committeeman and township trustee. Was married to Anna Ahlstrom, August 26, 1913. They have one child, Frank G. Is a member of the Methodist church and the Modern Woodmen of America. Was elected state representative from Webster county in 1922, re-elected in 1924. Elected state senator in 1928. A republican in politics.



C. E. ANDERSON.—Senator from the twenty-seventh district consisting of Webster and Calhoun counties, was born on a farm near Stratford, Iowa, June 24, 1886. His parents, C. G. and Clara Anderson, were among the early settlers of the Stratford community. Received his early education in the rural schools and the Stratford high school. At the age of twenty-seven he was appointed city marshal and street commissioner of Stratford. Has served as constable, president of the school board, republican township committeeman and township trustee. Was married to Anna Ahlstrom, August 26, 1913. They have one child, Frank G. Is a member of the Methodist church and the Modern Woodmen of America. Was elected state representative from Webster county in 1922, re-elected in 1924. Elected state senator in 1928. A republican in politics.



C. E. ANDERSON.—Representative from Webster county, was born on a farm near Stratford, Iowa, June 24, 1886. Received his early education in the rural schools and in the Stratford high school. Attended the Moody Bible Institute in Chicago for five terms. Was appointed street commissioner in Stratford in 1914. Has served on the Stratford police force and fire department. In 1913 was married to Anna Ahlstrom. They have one child, Frank G. Is a member of the Methodist church and the Modern Woodmen of America. Elected representative in 1922. Re-elected in 1924. A republican in politics.



C. E. ANDERSON.—Representative from Webster county, was born on a farm near Stratford, Iowa, June 24, 1886. Received his early education in the rural schools and in the Stratford high school. Attended the Moody Bible institute in Chicago for five terms. Was appointed street commissioner in Stratford in 1914. Has served on the Stratford police force and fire department. In 1913 was married to Anna Ahlstrom. They have one child, Frank G. Is a member of the Methodist church, the Modern Woodman of America and the farm bureau federation. Elected representative in 1922. A republican in politics.