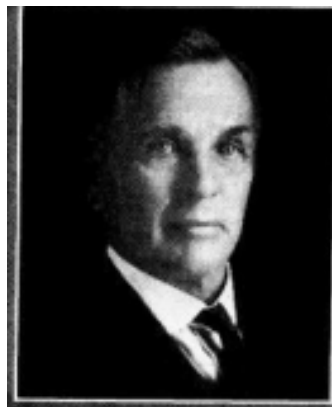


**CHARLES B. KERN.**—Senator from the eleventh district, which includes Clark and Warren counties, was born at Norwalk in Warren county, February 1, 1867. His parents, John and Miriam Black Kern, came from Ohio to Iowa in the year 1857 and settled in Linn township, Warren county, on the farm now owned and occupied by Senator Kern and family. He lived on the farm, spent his school days in the country district school, Indianola public schools and Simpson college. Married August 25, 1893, to Mary Frances Spring. They have four children, all of whom are living. He is actively engaged in farming and feeding. Represented his county in the thirty-seventh and thirty-eighth general assemblies. Was elected to the state senate from the Clark-Warren district in 1924. A republican in politics.



CHARLES B. KERN.—Senator from the eleventh district, which includes Clark and Warren counties, was born at Norwalk in Warren county, February 1, 1867. His parents, John and Miriam Black Kern, came from Ohio to Iowa in the year 1857 and settled in Linn township, Warren county, on the farm now owned and occupied by Senator Kern and family. He lived on the farm, spent his school days in the country district school, Indianola public schools and Simpson college. Married August 25, 1893 to Mary Frances Spring. They have four children, all of whom are living. He is actively engaged in farming and feeding. Represented his county in the 37th and 38th general assemblies. Was elected to the state senate from the Clark-Warren district in 1924. A republican in politics.



CHARLES B. KERN.

Representative from Warren county, was born in Warren county, February 1, 1867. His parents were John and Miriam Black Kern, who came from Fairfield county, Ohio to Warren county, Iowa in the year 1857. He was reared on a farm, attended the Indianola public schools and Simpson College. He was married August 25, 1892 to Mary Frances Spring, and to this union was born four children, all of whom are now living. He took up farming in early years and has been actively engaged in the same ever since. Elected representative in 1916. Re-elected in 1918. A republican in politics.



CHARLES B. KERN,

Representative from Warren county, was born in Warren county, February 1, 1867. His parents were John and Miriam Black Kern who came from Fairfield county, Ohio to Warren county, Iowa in the year 1857. He was reared on a farm, attended the Indianola public schools and Simpson College. He was married August 25, 1893 to Mary Frances Spring, and to this union was born four children, all of whom are now living. He took up farming in early years and has been actively engaged in the same ever since. Elected representative in 1916. A republican in politics.