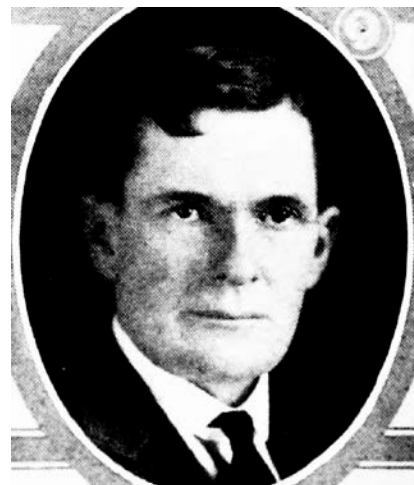


WM. S. KENNEDY.—Representative from Lee county, was born on a farm in that county May 16, 1879. Educated in the rural schools. Served in the Spanish-American war with the Fourteenth U. S. Infantry, being among the first troops sent to the Philippines. Took part in numerous battles and skirmishes, being wounded in a battle near Malate February 5, 1899. After being discharged worked in the mines through the western states until 1908, returning to Iowa at that time and engaging in farming in Lee county. Married Julia T. Sullivan at Butte, Montana, February 28, 1905, who died on October 19, 1915. Married October 3, 1917, at Altoona, Iowa, to Emily Kennedy. Has four children, two boys and two girls. A member of the Belmont lodge, No. 541, A. F. & A. M. of Hillsboro, Iowa. Elected to the house of representatives in 1924. Re-elected in 1926. Republican in politics.



KENNEDY, WM. S.—Representative from Lee county, was born on a farm in that county on May 16, 1879. Educated in the rural schools. Served in the Spanish-American war with the Fourteenth U. S. Infantry, being among the first troops sent to the Philippines. Took part in numerous battles and skirmishes, being wounded in a battle near Malate on February 5, 1899. After being discharged worked in the mines through the western states until 1908, returning to Iowa at that time and engaging in farming in Lee county. Married to Julia T. Sullivan at Butte, Montana, February 28, 1905, who died on October 19, 1915. Married October 3, 1917, at Altoona, Iowa, to Emily Kennedy. Has four children, two boys and two girls. A member of the Belmont lodge, No. 541, A. F. & A. M. of Hillsboro, Iowa. Elected to the house of representatives in 1924. Republican in politics.