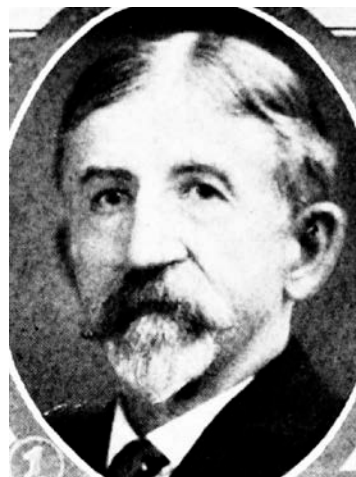
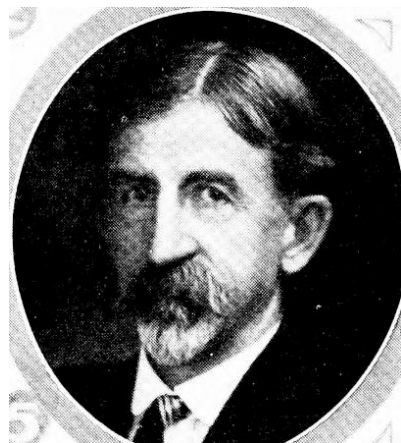


J. G. HEMPEL.—Representative from Clayton county, born at Giard, Clayton county, Iowa, December 9, 1860. Attended public schools and entered mercantile business in 1881. In 1887 was married to Emma J. Bickel, having three daughters, Mrs. Iowa H. Graf and Kathleen, M., living; Johneyette G., deceased when five years old. In 1892 opened general merchandise establishment at Giard, disposing of it at the end of three years. In April, 1896, opened up a clothing business at Elkader, which he has conducted successfully ever since. Served as secretary of school board, secretary of county fair, member of state board voting machine commissioners, member of state central committee, fourth district, member town council Elkader and served as county auditor eight years. Member Odd Fellows lodge, thirty-second degree Mason and Shriner. Elected representative in 1922, 1924 and 1926. Has always been a republican in politics.



J. G. HEMPEL.—Representative from Clayton county, born at Giard, Clayton county, Iowa, December 9, 1860. Attended public schools and entered mercantile business in 1881. In 1887 was married to Emma J. Bickel, having three daughters, Mrs. Iowa H. Graf and Kathleen M., living; Johneyette G., deceased when five years old. In 1892 opened general merchandise establishment at Giard, disposing of it at the end of three years. In April, 1895, opened up clothing business at Elkader, which he has successfully conducted ever since. Served as secretary of school board, secretary of county fair, member of state board voting machine commissioners, member of state central committee, fourth district, member town council Elkader and served as county auditor for eight years. A member of Masonic and I. O. O. F. lodges. Elected representative in 1922, re-elected in 1924. A republican in politics.



J. C. HEMPEL.—Representative from Clayton county, born at Giard, Clayton, county, Iowa, December 9, 1860. Attended public schools and entered mercantile business in 1881. In 1887 was married to Emma J. Bickel, having three daughters, Mrs. Iowa H. Graf and Kathleen M., living; Johneyette G., deceased when five years old. In 1892 opened general merchandise establishment at Giard, disposing of it at the end of three years. In April, 1895, opened up clothing business at Elkader, which he has successfully conducted ever since. Served as secretary of school board, secretary of county fair, member of state board voting machine commissioners, member of state central committee, fourth district, member town council Elkader and served as county auditor for eight years. A member of Masonic and I. O. O. F. lodges. Elected representative in 1922. A republican in politics.