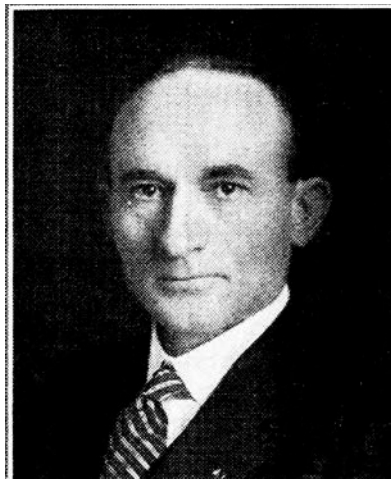




ROY HANEY.—Representative from Mills county, was born July 28, 1878, in the same county he represents. Was educated in the rural schools in his county, later attended business college, was vice president of the Glenwood Granite Works, director of the Mills County Building and Loan Association and for the past sixteen years has been engaged in the real estate and exchange business. Treasurer of the board of education and mayor of the city of Glenwood. This position he resigned after being elected as a member of the forty-first general assembly. He was reelected to the forty-second general assembly. Was married January 16, 1907, to Pearl Mintle, Glenwood. Member of the M. E. church, is a Mason, O. E. S. and Odd Fellow; also a member of the chamber of commerce of Glenwood. A republican in politics.



ROY HANEY.—Representative from Mills county, was born July 28, 1878, in the same county he represents in the legislature. He was educated in the rural schools in his county, later attended business college, was vice president of the Glenwood Granite Works and for the past fourteen years has been engaged in the real estate and exchange business. Treasurer of the board of education and mayor of the city of Glenwood. This position he resigned after being elected as a legislator. Was married January 16, 1907, to Pearl Mintle, Glenwood. He is an active member of the M. E. church, is a Mason, O. E. S. and Odd Fellow, also a member of the Glenwood Rotary club and of the Chamber of Commerce of Glenwood. A republican in politics.