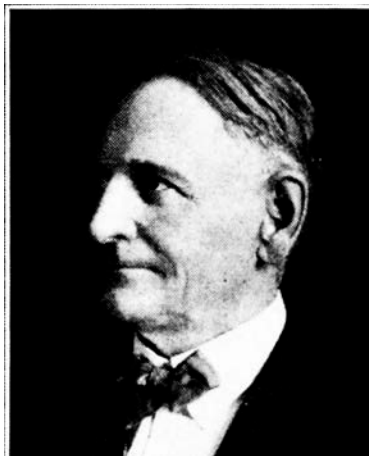




EDMUND A. GRIMWOOD.—Representative from Jones county, was born on a farm in Allamakee county, on December 8, 1863, of English parents. Secured only those advantages which come through the common schools. Engaged in the drug business at Oxford Junction, Iowa, in 1887, after three years of apprenticeship at Independence, Iowa. After thirty-three years in this business, disposed of same on July 1, 1920, and was elected to the house in November of that year. Was reelected in 1922, 1924 and 1926.



EDMUND A. GRIMWOOD.—Representative from Jones county, was born on a farm in Allamakee county, on December 8, 1863, of English parents. Secured only those advantages which come through the common schools. Engaged in the drug business at Oxford Junction, Iowa, in 1887, after three years of apprenticeship at Independence, Iowa. After thirty-three years in this business, disposed of same on July 1, 1920, and was elected to the house in November of that year, was re-elected in 1922 and 1924.



EDMUND A. GRIMWOOD.—Representative from Iowa county, was born on a farm in Allamakee county, on December 8, 1863, of English parents. Secured only those advantages which come through the common schools. Engaged in the drug business at Oxford Junction, Iowa, in 1887, after three years of apprenticeship at Independence, Iowa. After thirty-three years in this business, disposed of same on July 1, 1920, and was elected to the house in November of that year, and re-elected in 1922.



EDMUND A. GRIMWOOD

Born on a farm in Allamakee county on December 8, 1863, of English parents. Secured only those advantages which come through the common schools. Engaged in the drug business at Oxford Junction, Iowa, in 1887 after three years of apprenticeship in Independence, Iowa. After thirty-three years in this business, disposed of same on July 1, 1920, and was elected to the House in November of that year.