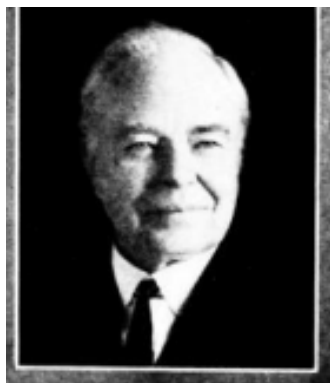
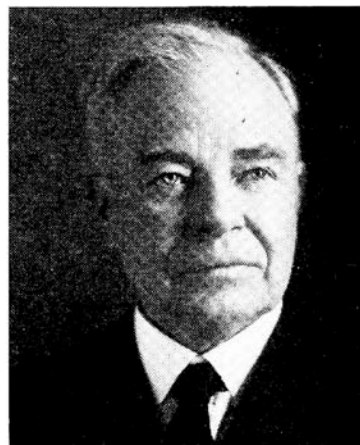




CHARLES J. FULTON.—Senator from the second district, composed of the counties of Jefferson and Van Buren, was born in Jefferson county, Iowa, January 27, 1860. His parents were American-born. He attended both common and private schools and was graduated in 1883 from Parsons college. Remained on the farm until the winter of 1891-92, when he became a member of the Loudon Machinery company. Was mayor of Fairfield from 1903 to 1907 and again in 1920. Served as chairman of the local exemption board for Jefferson county during the World War. Was president of the Fairfield Chautauqua association for thirteen years. Is a trustee of Parsons college and a trustee of the Fairfield free public library. Was a member of the house of representatives in the thirty-third and thirty-fourth general assemblies. Elected senator in 1920 and re-elected in 1924. A republican in politics.



CHARLES J. FULTON.—Senator from the second district, composed of the counties of Jefferson and Van Buren, was born in Jefferson county, Iowa, January 27, 1860. His parents were American-born. He attended both common and private schools and was graduated in 1883 from Parsons college. Remained on the farm until the winter of 1891-2, when he became a member of the Loudon Machinery company. Was mayor of Fairfield from 1903 to 1907 and again in 1920. Served as chairman of the local exemption board for Jefferson county during the World War. Was president of the Fairfield Chautauqua association for thirteen years. Is a trustee of Parsons college and a trustee of the Fairfield free public library. Was a member of the house of representatives in the thirty-third and thirty-fourth general assemblies. Elected senator in 1920 and re-elected in 1924. A republican in politics.



CHARLES J. FULTON.—Senator from the second district, composed of the counties of Jefferson and Van Buren, was born in Jefferson county, Iowa, January 27, 1860. His parents were American-born. He attended both common and private schools and was graduated in 1888 from Parsons college. Remained on the farm until the winter of 1891-2, when he became a member of the Loudon Machinery company. Was mayor of Fairfield from 1903 to 1907 and again in 1920. Served as chairman of the local exemption board for Jefferson county during the World war. Was president of the Fairfield Chautauqua association for thirteen years. Is a trustee of Parsons college, a trustee of the Fairfield free public library, and a member of the school board of Fairfield. Was a member of the house of representatives in the thirty-third and thirty-fourth general assemblies. Elected senator in 1920. A republican in politics.



CHARLES J. FULTON

Senator from the Second district, composed of the counties of Jefferson and Van Buren, was born in Jefferson county, Iowa, January 27, 1860. His parents were American-born. He attended both common and private schools and was graduated in 1883 from Parsons college. Remained on the farm until the winter of 1891-2, when he became a member of the Loudon Machinery company. Was mayor of Fairfield from 1903 to 1907 and again in 1920. Served as chairman of the local exemption board for Jefferson county during the World war. Was president of the Fairfield Chautauqua association for thirteen years. Is a trustee of Parsons college, a trustee of the Fairfield free public library, a member of the county board of education and a member of the school board of Fairfield. Was a member of the house of representatives in the Thirty-third and Thirty-fourth general assemblies. Elected senator in 1920. A republican in politics.



CHARLES J. FULTON,

Representative from Jefferson county, was born in that county January 27, 1860. His parents were American-born. He attended both common and private schools and was graduated in 1883 from Parsons College. Remained on the farm until the winter of 1891-2, when he became a member of the Loudon Machinery Company with which firm he is still actively connected. Was elected mayor of Fairfield in 1903, holding the office four years. Elected Representative in 1908 and re-elected in 1910. A Republican in politics.



CHARLES J. FULTON,

Representative from Jefferson county. Was born in that county January 27, 1860. His parents were American-born. He attended both common and private schools and was graduated in 1883 from Parsons College. Remained on the farm until the winter of 1891-2, when he became a member of the Loudon Machinery Company with which firm he is still actively connected. Was elected mayor of Fairfield in 1903, holding the office four years. Elected Representative in 1908. A Republican in politics.