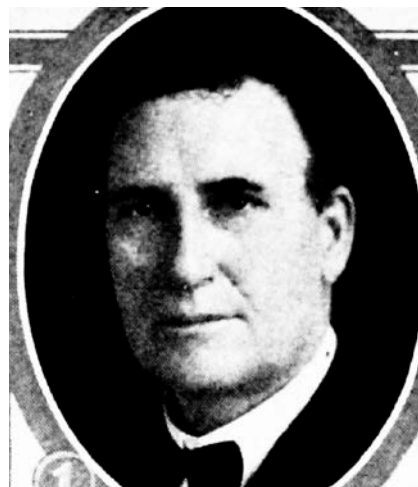


JOHN EDEN.—Representative from Clinton county, was born December 25, 1870, on a farm in Clinton county. He lived on a farm continuously until 1921, when he moved to Calamus, his present home. Served as road boss for two years, president of school board two years, director of a rural school, three years, president of Red Cross five years, president of Farmers Elevator company four years, county supervisor six years, and town councilman. Elected to the legislature in 1924 and reelected in 1926. Received his education in the rural schools. On October 3, 1895, married Agnes E. Kuebler, to which union were born three sons, Lester J., Richard J., and Bernard William. Mr. Eden is a Thirty-second degree Mason, a member of the Modern Brotherhood of America, the Modern Woodmen of America and the M. E. Church. He is a republican in politics.



JOHN EDEN.—Representative from Clinton county, was born December 25, 1870, on a farm in Clinton county. He lived on a farm continuously until 1921, when he moved to Calamus, his present home. Served as road boss for two years, president of school board two years, director of a rural school, three years, president of Red Cross five years, president of Farmers Elevator Company four years, county supervisor six years, and town councilman. Elected to the legislature in 1924. Received his education in the rural schools. On October 3, 1895, married Agnes B. Kuebler, to which union were born three sons, Lester J., Richard J., and Bernard William. Mr. Eden is a Thirty-second degree Mason, a member of the Modern Brotherhood of America, the Modern Woodmen of America, and is a republican.