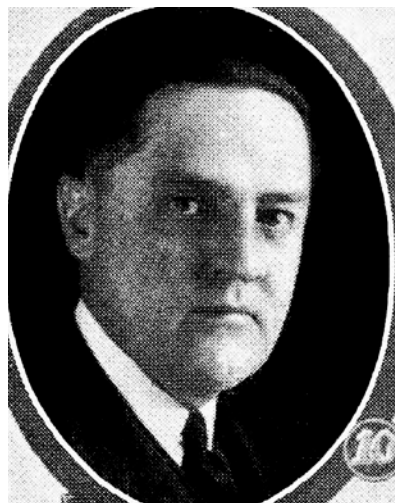




**ED H. CAMPBELL.**—Senator from the Cherokee, Ida and Plymouth county district, was born on a farm near Battle Creek, Iowa, on March 6, 1882, son of Romeo and Hattie Campbell, pioneers of Ida county, Iowa. Attended the rural schools until fourteen years of age. Graduated from the Battle Creek, Iowa, high school in 1900. Graduated from the University of Iowa in 1906, law department. Served as mayor of Battle Creek three terms. Member of the house of representatives of the thirty-fourth general assembly. Senator for the forty-sixth senatorial district in the thirty-eighth, thirty-ninth, fortieth, fortieth extra and forty-first general assemblies. Served in the infantry in the World War. Member of the American Legion. Married Esta Fein in Los Angeles, Calif., on October 25, 1913. Son Romeo Ed Campbell, born August 31, 1915. Republican in politics. Member of the law firm of Campbell & Campbell, being associated with his twin brother, Jed H. Campbell.



**ED. H. CAMPBELL**—Was born on the farm near Battle Creek, Iowa, on March 6, 1882. Attended the rural school until 14 years of age. Graduated from the Battle Creek high school in 1900. Graduated from the university of Iowa in 1916, law department. Served as mayor of Battle Creek for three terms. Member of the house of representatives of the thirty-fourth general assembly. Senator for the forty-sixth senatorial district. Married Esta Fein in Los Angeles, Cal., October 25, 1913. Son, Romeo Campbell, born August 31, 1915. Republican in politics. Member of law firm of Campbell & Campbell, Battle Creek, being associated with his twin brother, Jed H. Campbell.



ED. H. CAMPBELL.—Was born on the farm near Battle Creek, Iowa, on March 6, 1882. Attended the rural school until 14 years of age. Graduated from the Battle Creek high school in 1900. Graduated from the university of Iowa in 1916, law department. Served as mayor of Battle Creek for three terms. Member of the house of representatives of the thirty-fourth general assembly. Senator for the forty-sixth senatorial district. Married Esta Fein in Los Angeles, Cal., October 25, 1913. Son, Romeo Campbell, born August 31, 1915. Republican in politics. Member of law firm of Campbell & Campbell, Battle Creek, being associated with his twin brother, Jed H. Campbell.



ED. H. CAMPBELL

Was born on the farm near Battle Creek, Iowa, on the 6th day of March in the year 1882. The son of Romeo Campbell and Hattie Campbell, pioneer residents of Ida county. Attended the rural school until 14 years of age. Graduated from the Battle Creek high school in 1900. Graduated from the University of Iowa in 1916, law department. Served as mayor of Battle Creek, Iowa, for three terms. Member of the house of representatives of the thirty-fourth general assembly. Senator for the Forty-sixth senatorial district. Married Esta Fein in Los Angeles, California, October 25, 1913. Son, Romeo Campbell, born August 31, 1915. Republican in politics. Member of law firm of Campbell & Campbell, Battle Creek, Iowa, being associated with his twin brother, Jed H. Campbell.



ED HOYT CAMPBELL.

Representative from Ida county, was born on a farm near Battle Creek, Iowa, March 6, 1882. He is the son of Romeo and Hattle Campbell, pioneer settlers of Ida county. Attended the rural schools and graduated from the Battle Creek high school in 1900. Graduated from the College of Law of the University of Iowa in 1906 and has since practiced his profession at Battle Creek. Was mayor of Battle Creek from 1906 to 1910. Elected Representative in 1910. A Republican in politics.