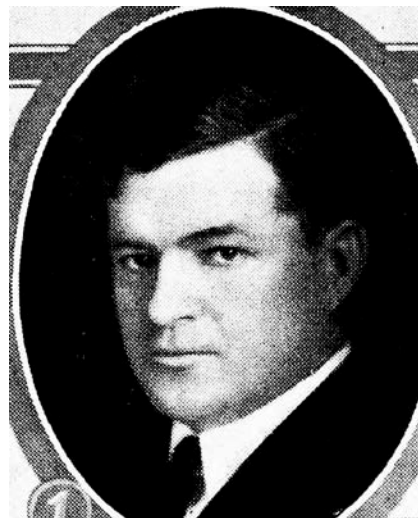




FRED R. BLYTHE.—Representative from Iowa county, was born in 1890 of Scotch-Irish parentage, on the farm he now operates. Graduated from the University of Iowa 1913, and Columbia Law school, 1916. Admitted to Illinois bar 1916, and practiced law a short time in Chicago. Married Bertha von Schrader of Jackson county, Iowa, 1916, and has three children. Member of Presbyterian church and Masonic Order. Elected to the legislature in 1924, reelected in 1926. A republican in politics.



FRED R. BLYTHE.—Representative from Iowa county, was born in 1890 of Scotch-Irish parentage, on the farm he now operates. Graduated from the University of Iowa 1913, and Columbia Law school, 1916. Admitted to Illinois bar 1916, and practiced law a short time in Chicago. Married Bertha von Schrader of Jackson county, Iowa, 1916, and has two children. Member of Presbyterian church and Masonic Order and is president of the board of education. Elected to the legislature in 1924. A republican in politics.