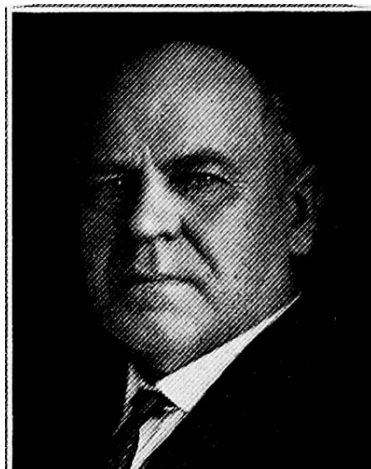


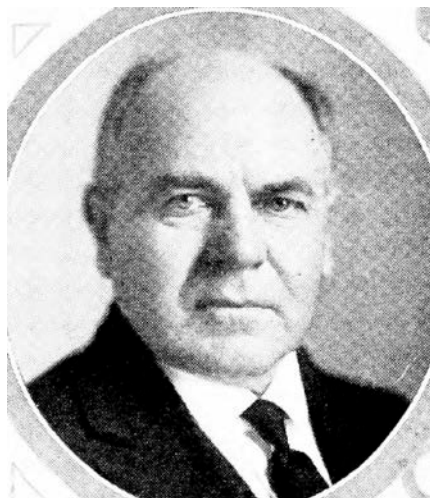
W. WALTER WILSON.—Representative from Tama county, was born at Franklin, Indiana, in 1869. At the age of six months he moved with his parents to Illinois. When four years of age he moved to Iowa in one of those historic prairie schooners, crossing the Mississippi on a ferry at Burlington, and settling in 1873 on a farm in Black Hawk county. At the age of nineteen he entered the State Teachers' college, from which he was graduated in 1892. In 1894 he was graduated from the state university. After teaching school five terms he was married to S: Sophie Keeler and took up the business of farming for himself, first in Hamilton county, and later in Tama county. He has three children, Carl, Iris, and Dorothy. He has held the office of secretary of the Buckingham Grain Company since its organization and also the presidency of the Farmers' Lumber Company at Traer since its origin. He was president of the Tama county farm bureau when elected to the office of representative without opposition in November, 1922. He was re-elected in November, 1924, in 1926, and again in 1928. He is a member of the Methodist church, a thirty-second degree Mason and a republican in politics.



W. WALTER WILSON.—Representative from Tama county, was born at Franklin, Indiana, in 1869. At the age of six months he moved with his parents to Illinois. When four years of age he moved to Iowa in one of those historic prairie schooners, crossing the Mississippi on a ferry at Burlington, and settling in 1873 on a farm in Black Hawk county. At the age of nineteen he entered the State Teachers' college, from which he was graduated in 1892. In 1894 he was graduated from the state university. After teaching school five terms he was married to S. Sophie Keeler and took up the business of farming for himself, first in Hamilton county, and later in Tama county, and is still following farming. He has three children, Carl, Iris and Dorothy. He has held the office of secretary of the Buckingham Grain company since its organization and also the presidency of the Farmers' Lumber company at Traer since its origin. He was the president of the Tama County Farm Bureau when elected to the office of representative without opposition. He was reelected in November, 1924, and again in 1926. He is a member of the Methodist church. He is a thirty-second degree Mason. A republican in politics.



W. WALTER WILSON.—Representative from Tama county, was born at Franklin, Indiana, in 1869. At the age of six months he moved with his parents to Illinois. When four years of age he moved to Iowa in one of those historic prairie schooners, crossing the Mississippi on a ferry at Burlington, and settling in 1873 on a farm in Black Hawk county. At the age of nineteen he entered the State Teachers' college, from which he was graduated in 1892. In 1894 he was graduated from the State university. After teaching school five terms he was married to S. Sophie Keeler and took up the business of farming for himself, first in Hamilton county, and later in Tama county, and is still following farming. He has three children, Carl, Iris and Dorothy. He has held the office of secretary of the Buckingham Grain company since its organization and also the presidency of the Farmer's Lumber company, at Traer since its origin. He was the president of the Tama County Farm Bureau when elected to the office of representative without opposition. He was re-elected in November, 1924. He is a member of the Methodist church. He is a 32nd degree Mason. A republican in politics.



W. WALTER WILSON.—Representative from Tama county, was born at Franklin, Ind., in 1869. At the age of six months he moved with his parents to Illinois. When four years of age he moved to Iowa in one of those historic prairie schooners, crossing the Mississippi on a ferry at Burlington, and settled in 1873 on a farm in Black Hawk county, the deed to which bears the signature of Franklin Pierce. At the age of nineteen, he entered the state teachers' college, from which he was graduated in 1892. In 1894 he was graduated from the state university. After teaching school five terms he was married to S. Sophie Keeler and took up the business of farming for himself, first in Hamilton county, and later in Tama county, and is still following farming. He has three children, Carl, Iris, and Dorothy. He has held the office of secretary of the Buckingham Grain company since its organization and also the presidency of the Farmers' Lumber company, at Traer since its origin. He was president of the Tama county farm bureau when elected to the office of representative without opposition either in the primary or general election November 7, 1922. He is a member of the Methodist church. He is a 32nd degree Mason. A republican in politics.