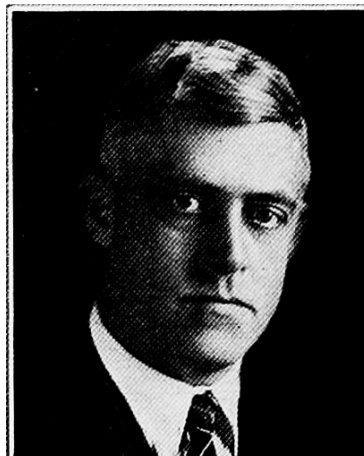


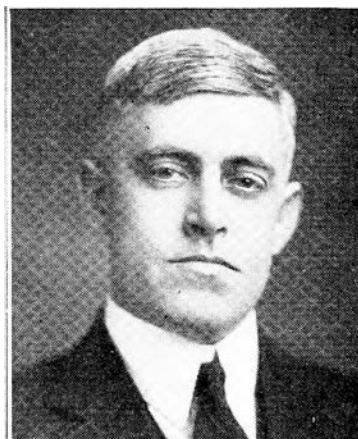
J. O. SHAFF.—Senator from the twenty-second district, Clinton county. Born January 6, 1885, at Shaffton, Iowa; graduate of Iowa State college and University of Wisconsin; married Gladys Melick, 1908, since deceased; married Evelyn Lillie Purcell July, 1921; member of the house in thirty-seventh general assembly; member of the senate in fortieth, fortieth extra, forty-first, forty-second and forty-third sessions. Is engaged in farming and the dairy business, specializing in Holstein cattle; operates grain elevators at Shaffton, Princeton and McCausland. President Citizens Savings bank, Low Moor, Iowa, and director City National bank, Clinton, Iowa. Actively interested in republican politics for the past fourteen years.



J. O. SHAFF.—Senator from the twenty-second district, Clinton county. Born January 6, 1885, at Shaffton, Iowa; graduate of Iowa State college and University of Wisconsin; married Gladys Melick, 1908, since deceased; married Evelyn Lillie Purcell July, 1921; member of the house in thirty-seventh general assembly; member of the senate in fortieth, fortieth extra and forty-first sessions. Is engaged in farming and the dairy business, specializing in Holstein cattle; operates grain elevators at Shaffton, Princeton and McCausland. President Citizens Savings bank, Low Moor, Iowa, and director City National bank, Clinton, Iowa. Actively interested in republican politics for the past twelve years.



J. O. SHAFF.—Senator from the twenty-second district, Clinton county. Born January 6, 1885, at Shaffton, Iowa; graduate of Iowa State College and University of Wisconsin; married Gladys Melick, 1908, since deceased; married Evelyn Lillie Purcell July, 1921; member of the house in 37th general assembly; member of the senate in 40th, 40th extra and 41st sessions. Is engaged in farming and the dairy business, specializing in Holstein cattle; operates grain elevators at Shaffton, Princeton and McCausland. President Citizens Savings bank, Low Moor, Iowa, and director City National bank, Clinton, Iowa. Actively interested in republican politics for the past twelve years.



J. O. SHAFF.—Senator from the twenty-second district, was born January 6, 1885, on a farm near Shaffton, Iowa; married Evelyn Lily Purcell, July, 1921; graduated from Iowa state college and Wisconsin university. Was a member of the thirty-seventh general assembly; principal occupation, farming, specializing in Holstein cattle; operates grain elevators at Shaffton, Princeton and McCausland; is president of the Citizens Savings bank, Low Moor, and director in City National bank, Clinton. Actively interested in republican politics for the past ten years.



J. O. SHAFF,

One of the representatives of the 45th district, was born in Clinton county, January 6, 1885, of American parents whose family settled in Clinton county in 1837, taking up land from the government which is still in the family. He received his education in the rural school, Clinton high school, graduating in 1904 from the Iowa State College, and later taking further work in the University of Wisconsin. Since that time he has been actively engaged in farming, Holstein cattle being his specialty. Also handles live stock and grain business at Shaffton, Iowa, and is interested as a director and officer in banks in Clinton and Low Moor. He served on the board of trustees of Camanche township for two terms, and was elected in 1916 as representative from Clinton county. A republican in politics.