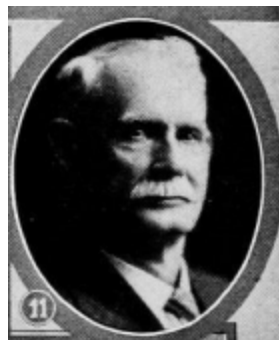


J. E. McMILLAN.—Representative from Benton county, was born in Benton county, Iowa, November 16, 1860. Educated in common schools. He married Nora I. Pitts, November 2, 1882, and has five children, Leslie, Lawrence, Nancy, Glen and Wilhelmina. Has taken an active part in county and community affairs for many years. . Was member of board of directors of Benton county, chairman of the township farm bureau most of the time since organized and served two years as vice-president. Was county chairman of the campaign for the eradication of bovine tuberculosis in Benton county. Has always been a booster for good roads. Made a King road drag when first invented by Mr. King of Missouri and dragged roads near his place for a number of years gratis before road officials thought of paying for road dragging. Served as a member of the legislature in forty-second, forty-second extra and forty-third general assemblies. Has been a member of the Prairie Creek Church of Christ for many years and is at present chairman of the board. A republican in politics.



J. E. McMILLAN.—Representative from Benton county, was born in Benton county, Iowa, November 16, 1860. Educated in common schools. He married Nora I. Pitts, November 2, 1882, and has five children, Leslie, Lawrence, Nancy, Glen and Wilhelmina. Has taken an active part in county and community affairs for many years. Was member of board of directors of Benton county, chairman of the farm bureau most of the time since organized and for two years has served as vice president. Has been one of the leading members of the Prairie Creek Church of Christ for a good many years and is at present chairman of the board. A republican.