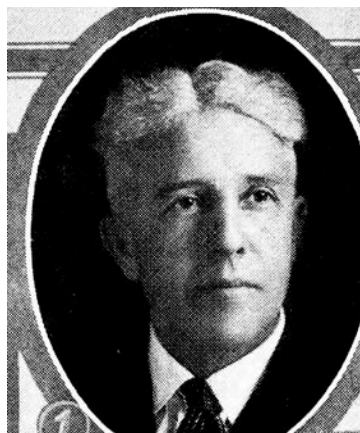


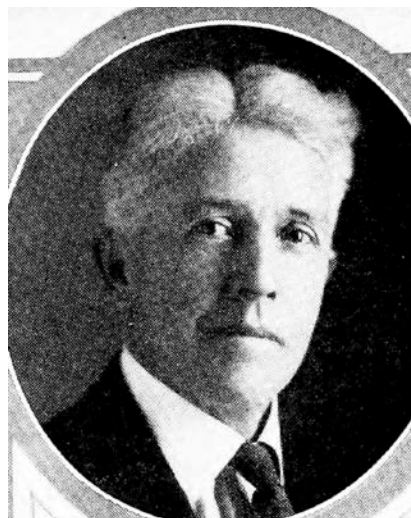
J. A. KING.—Representative from Clay county, was born in Clay county, Iowa, April 13, 1876. Moved with his parents to the farm on which he now lives, when about three years old. Received his early education in the common schools and afterward attended Nora Springs seminary where he graduated in 1898. Taught in the country schools of Clay county three years. Was married to Effie A. Anderson, August 28, 1902. Has two children, James Russel, born August 23, 1903, and Julia Leone, born October 21, 1909. Has been actively engaged in farming since 1901 and was president of the Clay county farm bureau three years. Member of the Odd Fellows and Masonic lodges. Elected to the legislature in November, 1922, re-elected in 1924, 1926 and 1928. A republican in politics.



J. A. KING.—Representative from Clay county, was born in Clay county, Iowa, April 13, 1876. Moved with his parents to the farm on which he now lives, when about three years old. Received his early education in the common schools and afterward attended Nora Springs seminary where he graduated in 1898. Taught in the country schools of Clay county three years. Was married to Effie A. Anderson, August 28, 1902. Has two children, James Russel, born August 23, 1903, and Julia Leone, born October 21, 1909. Has been actively engaged in farming since 1901 and was president of the Clay county farm bureau three years. Member of the Odd Fellows and Masonic lodges. Elected to the legislature in November, 1922, reelected in 1924 and 1926. A republican in politics.



J. A. KING.—Representative from Clay county, was born in Clay county, Iowa, April 13, 1876. Moved with his parents to the farm on which he now lives, when about three years old. Received his early education in the common schools and afterward attended Nora Springs seminary where he graduated in 1898. Taught in the country schools of Clay county three years. Was married to Effie A. Anderson, August 28, 1902. Has two children, James Russel, born August 23, 1903, and Julia Leone, born October 21, 1909. Has been actively engaged in farming since 1901 and was president of the Clay county farm bureau three years. Member of the Odd Fellows and Masonic lodges. Elected to the legislature in November, 1922 and re-elected in 1924. A republican in politics.



J. A. KING.—Representative from Clay county, was born in Clay county, Iowa, April 13, 1876. Moved with his parents to the farm on which he now lives, when about three years old. Received his early education in the common schools and afterward attended Nora Springs seminary where he graduated in 1898. Taught in the country schools of Clay county three years. Was married to Effie A. Anderson August 28, 1902. Has two children, James Russel, born August 23, 1903, and Julia Leone, born October 21, 1909. Has been actively engaged in farming since 1901 and was president of Clay county farm bureau three years. Elected to the legislature in November, 1922. A republican in politics.