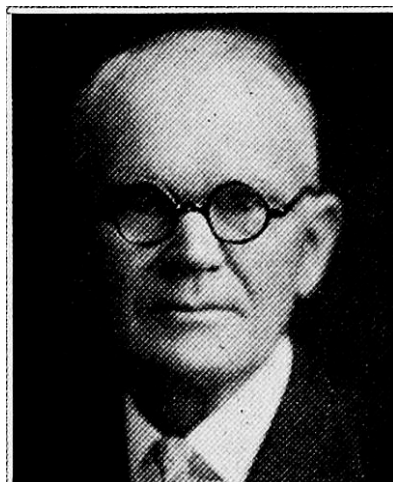


HAGGLUND

LENUS HAGGLUND.—Representative from Page county, Iowa, was born in Sweden, May 11, 1864. He came to Illinois, Henry county, with his parents, August, 1867. Then moved with his parents in the spring of 1876 to a farm near Essex, Page county, Iowa. Farming has been his life work. Awarded gold medal in 1926 in master farmer contest. Attended rural schools and Western Normal College at Shenandoah, Iowa. Has always taken an active part in church, school, and public affairs. Has served as township trustee, school director, president of the school board, school secretary and treasurer, member of the county board of education, president of the Page county farm bureau and also treasurer of same. Was married to Alice Seabloom, March 19, 1891. To this union five children were born, four sons and one daughter. One son met his death in an accident on the harvest field August 16, 1919, and another son, the youngest, died suddenly June 6, 1927. He is a member of the Presbyterian church. Elected representative in 1926 and 1928. Republican in politics.



LENUS HAGGLUND.—Representative from Page county, Iowa, was born in Sweden, May 11, 1864. He came to Illinois, Henry county, with his parents, August, 1867. Then moved with his parents in the spring of 1876 to a farm near Essex, Page county, Iowa. He has always lived on a farm since coming to the United States and the farm on which he is now living has been owned and occupied by him for thirty-three years. Attended the rural schools and one winter attended the Western Normal college at Shenandoah. Has always taken an active part in church, schools and public affairs. Has served as township trustee, school director, president of the school board, school secretary and treasurer, member of the county board of education, president of the Page county farm bureau and also treasurer of same. Was married to Alice Seablom, March 19, 1891. To this union five children were born, four sons and one daughter. All living except one, who was killed in an accident on the harvest field August, 1919. He is a member of the Presbyterian church. Elected representative in 1926. Republican in politics.