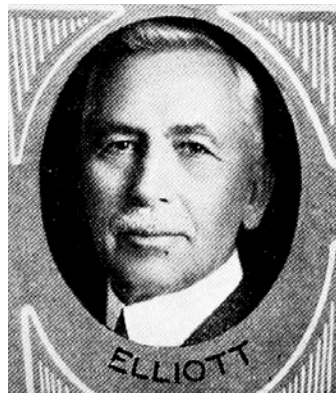
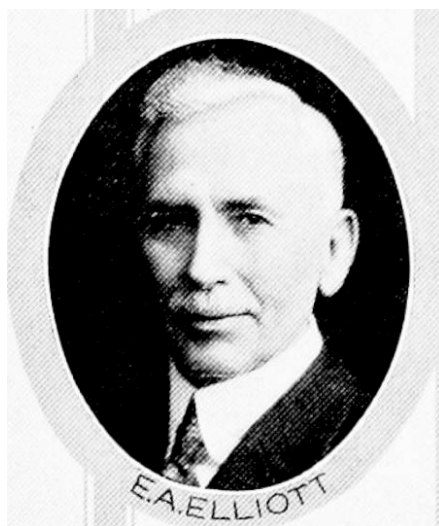


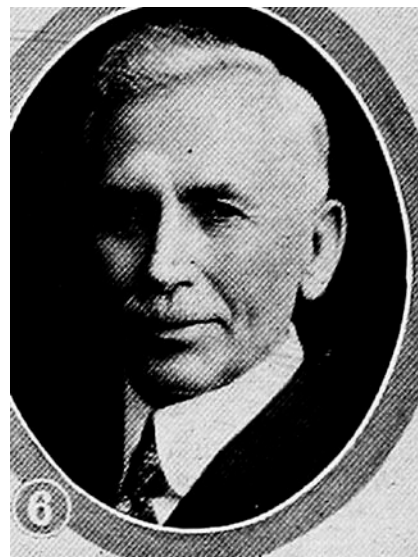
**ELMORE A. ELLIOTT, Des Moines.**—Representative from Polk county, was born on a farm near Louisville, Kentucky, and spent the early years of his life farming. Worked his way through school, entering Westfield college, Westfield, Illinois, at the age of 23, where he spent two years, later entering Old Western college at Toledo, Iowa, where he finished his education. Married Lola Shepherd of Des Moines. Elected a member of the city council of Des Moines in 1918, re-elected in 1920, serving both terms as finance commissioner. With state board of health one year. Is a minister in the United Brethren church. A member of the Masonic order, the I. O. O. F., K. P., L. O. O. M. and Hapac Grotto. Elected representative in 1924, 1926, 1928, 1932 and again in 1934. A republican.



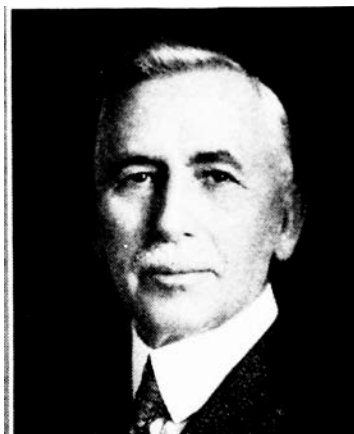
ELMORE A. ELLIOTT, Des Moines.—Representative from Polk county, was born on a farm near Louisville, Kentucky, and spent the early years of his life farming. Worked his way through school, entering Westfield College, Westfield, Illinois, at the age of 23, where he spent two years, later entering Old Western College at Toledo, Iowa, where he finished his education. Married Lola Shepherd of Des Moines. Elected a member of the city council of Des Moines in 1918, re-elected in 1920, serving both terms as finance commissioner. With state board of health one year. Is a minister in the United Brethren church. A member of the Masonic order, the I. O. O. F., K. P., L. O. O. M. and Hapac Grotto. Elected representative in 1924, re-elected in 1926 and 1928 and again in 1932. A republican.



ELMORE A. ELLIOTT.—One of the representatives from Polk county, was born on a farm near Louisville, Kentucky, and spent the early years of his life farming. Worked his way through school, entering Westfield college, Westfield, Ill., at the age of 23 where he spent two years, later entering old Western college at Toledo, Iowa, where he finished his education. Married Lola Shepherd of Des Moines. Elected a member of the city council of Des Moines in 1918, re-elected in 1920, serving both terms as finance commissioner. With state board of health one year. Is a minister in the Congregational church. A member of the Masonic order, the I. O. O. F., K. P., L. O. O. M. and Hapac Grotto. Elected in 1924, re-elected in 1926 and 1928. A republican in politics.



**ELMORE A. ELLIOTT.**—One of the representatives from Polk county, was born on a farm near Louisville, Kentucky, and spent the early years of his life farming. Worked his way through school, entering Westfield college, Westfield, Ill., at the age of 23 where he spent two years, later entering old Western college at Toledo, Iowa, where he finished his education. Married Lola Shepherd of Des Moines. Elected a member of the city council of Des Moines in 1918, reelected in 1920, serving both terms as finance commissioner. With state board of health one year. Is a minister in the Congregational church. A member of the Masonic order, the I. O. O. F., K. P., L. O. O. M. and Hapac Grotto. Elected in 1924 and reelected in 1926. A republican in politics.



**ELMORE A. ELLIOTT.**—One of the representatives from Polk county, was born on a farm near Louisville, Kentucky, and spent the early years of his life farming. Worked his way through school, entering Westfield college, Westfield, Ill., at the age of 23 where he spent two years, later entering old Western college at Toledo, Iowa, where he finished his education. Married Lola Shepherd of Des Moines. Elected a member of the city council of Des Moines in 1918, re-elected in 1920, serving both terms as finance commissioner. With state board of health one year. Is a minister in the Congregational church. A member of the Masonic order, the I. O. O. F., K. P., L. O. O. M. and Hapac Grotto. Elected representative in 1924. A republican in politics.