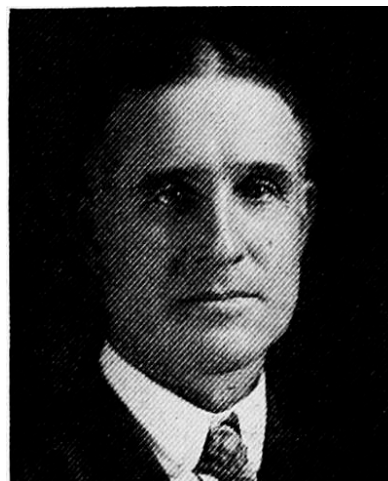
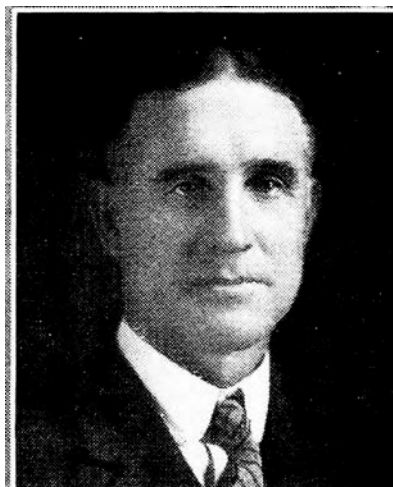




R. B. ECKLES.—Representative from Butler county, was born on a farm in Marshall county, Iowa, August 6, 1876. He was educated in the rural schools, and graduated from the Iowa State college in 1896. He was married to Ena M. Burnham in 1899. They have three children, Lester, Gordon and Dotha. He taught dairying and animal husbandry for two years at Doyleston, Pennsylvania. Engaged in farming and live stock feeding since 1900 near Aplington, Iowa. Justice of the peace for many years, a member of the Aplington consolidated school board for twelve years, now serving as president of the board. A member of the Presbyterian church. Elected representative in 1924 and re-elected in 1926 and 1928. A republican in politics.



R. B. ECKLES.—Representative from Butler county, was born on a farm in Marshall county, Iowa, August 6, 1876. He was educated in the rural schools, and graduated from the Iowa State college in 1896. He was married to Ena M. Burnham in 1899. They have three children, Lester, Gordon and Dortha. He taught dairying and animal husbandry for two years at Doyleston, Pennsylvania., Engaged in farming and livestock feeding since 1900 near Aplington, Iowa. Justice of the peace for many years, a member of the Aplington consolidated school board for twelve years, being president of the board at this time. A member of the Presbyterian church. Elected representative in 1924 and re-elected in 1926. A republican in politics.



R. B. ECKLES.—Representative from Butler county, was born on a farm in Marshall county, Iowa, August 6, 1876. He was educated in the rural schools, and graduated from the Iowa State college in 1896. He was married to Ena M. Burnham in 1899. They have three children, Lester, Gordon and Dortha. He taught dairying and animal husbandry for two years at Doyleston, Pennsylvania. Engaged in farming and livestock feeding since 1900 near Aplington, Iowa. Justice of the peace for many years, a member of the Aplington consolidated school board for twelve years, being president of the board at this time. A member of the Presbyterian church. Elected representative in 1924. A republican in politics.