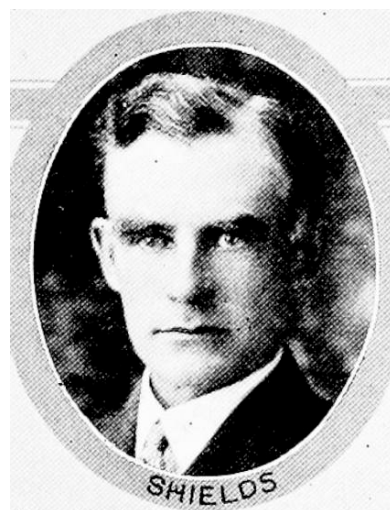




LEROY SHIELDS.—Representative from Clarke county, was born January 29, 1880, near Hopeville in Clarke county, Iowa, on a farm which he now owns and where he has continuously made his home. His parents came to Iowa in early childhood and knew the hardships of pioneer life. His father, J. H. C. Shields, was a veteran of the Civil war and a leader in all community interests. His mother, Frances Lawrence Shields, to whose pure life and gracious spirit he gladly pays tribute, is still living. The subject of this sketch received his education in the local schools, was a teacher for four years, minister of the Christian church for three years, and held evangelistic meetings in several churches in the state. Recent years have been devoted exclusively to his live stock and farming interests. He is a charter member of the Clarke county farm bureau, member of the Masonic order, and the republican party. Elected in 1928 and again in 1930.



LEROY SHIELDS.—Representative from Clarke county, was born January 29, 1880, near Hopeville in Clarke county, Iowa, on a farm which he now owns and where he has continuously made his home. His parents came to Iowa in early childhood and knew the hardships of pioneer life. His father, J. H. C. Shields, was a veteran of the Civil War and a leader in all community interests. His mother, Frances Lawrence Shields, to whose pure life and gracious spirit he gladly pays tribute, is still living at the age of eighty-one. The subject of this sketch received his education in the local schools, was a teacher for four years, minister of the Christian church for three years, and held evangelistic meetings in several churches in the state. Recent years have been devoted exclusively to his live stock and farming interests. He is a charter member of the Clarke County Farm Bureau, member of the Masonic order, and the republican party.