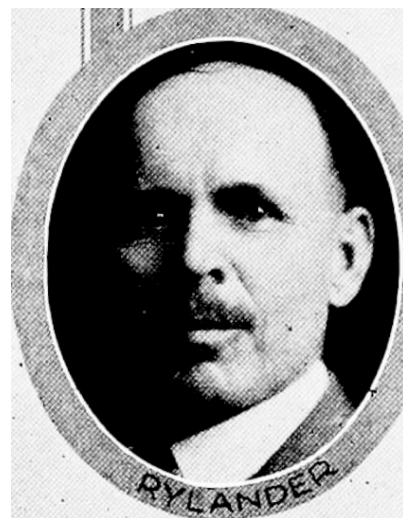




J. F. RYLANDER.—Representative from Marshall county, was born in Sweden, March 29, 1876. Came to Marshall county, Iowa, in 1893. Was educated in the common and extension schools of the old country and the Friends Academy of Le Grand, Iowa. Married Gertie H. Johnson, of Le Grand, July 24, 1901, and in the spring of 1902 began operations on a rented farm in the Le Grand community. There are three children in the family, Lois H., Carl E., and Hilda Jeannette. Has always been interested in the farmer's problems and has given considerable assistance to the organization of the farm bureau in Iowa and Minnesota. Was a member of the board of directors of Marshall county farm bureau for a number of years. Was elected president for three terms, but declined the honor for the third term because of lack of time. Is a stockholder in the Central Iowa fair association and served as its president for a number of years. Is an active member of the Friends church. Is a republican in politics and a Mason.



J. F. RYLANDER.—Representative from Marshall county, was born in Sweden March 29, 1876. Came to Marshall county, Iowa, in 1893. Was educated in the common and extension schools of the old country and the Friends Academy of Le Grand, Iowa. Married Gertie H. Johnson of Le Grand July 24, 1901, and in the spring of 1902 began operations on a rented farm in the Le Grand community. There are three children in the family, Lois H., Carl E., and Hilda Jeannette. Has always been interested in the farmer's problems and has given considerable assistance to the organization of the farm bureau in Iowa and Minnesota. Was a member of the board of directors of Marshall county farm bureau for a number of years. Was elected president for three terms, but declined the honor for the third term because of lack of time. Is a stockholder in the Central Iowa Fair Association and is now serving the second term as its president. Is an active member of the Friends Church and a republican in politics.