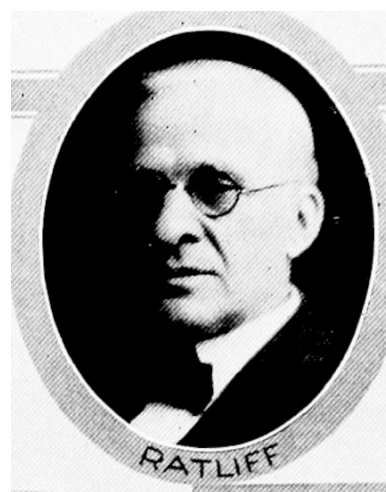


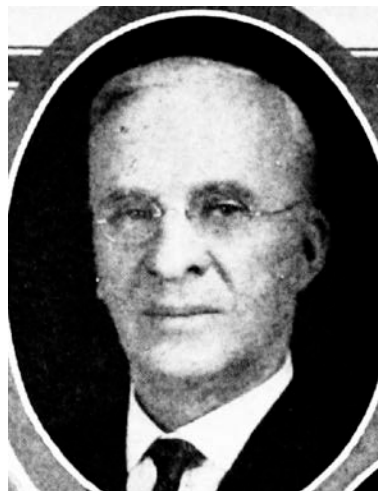
Z. S. RATLIFF.—Representative from Henry county, was born November 25, 1862, in the county he now represents in the legislature. He received his education in the rural schools and Whittier college. He was married to Amelia Dorcis Kramling of Kahoka, Missouri, October 7, 1891. Has one son, Paul, who is operating the home farm. He has engaged in farming and banking. Resigned as member of the executive committee of Iowa farm bureau federation when becoming a candidate for the legislature. Is an active member of the Presbyterian church. Elected to the general assembly in 1924, re-elected in 1926, 1928, and 1930. A republican in politics.



Z. S. RATLIFF.—Representative from Henry county, was born November 25, 1862, in the county he now represents in the legislature. He received his education in the rural schools and Whittier college. He was married to Amelia Dorcis Kramling of Kahoka, Missouri, October 7, 1891. Has one son, Paul, who is operating the home farm. He has engaged in farming and banking. Resigned as member of the executive committee of Iowa farm bureau federation when becoming a candidate for the legislature. Is an active member of the Presbyterian church. Elected to the general assembly in 1924, re-elected in 1926 and 1928. A republican in politics.



Z. S. RATLIFF.—Representative from Henry county, was born November 25, 1862, in the county he now represents in the legislature. He received his education in the rural schools and Whittier college. He was married to Amelia Dorcis Kramling of Kahoka, Missouri, October 7, 1891. Has one son, Paul, who is operating the home farm. He has engaged in farming and banking. Resigned as member of the executive committee of Iowa farm bureau federation when becoming a candidate for the legislature. Is an active member of the Presbyterian church. Elected to the general assembly in 1924, reelected in 1926. A republican in politics.



Z. S. RATLIFF.—Representative from Henry county, was born November 25, 1862, in the county he now represents in the legislature. He received his education in the rural schools and Whittier college. He was married to Amelia Dorcis Kramling of Kahoka, Missouri, October 7, 1891. Has one son, Paul, who is operating the home farm. He has engaged in farming and banking. Resigned as member of the executive committee of the Iowa Farm Bureau Federation when becoming a candidate for the legislature. Is an active member of the Presbyterian church. A republican in politics.