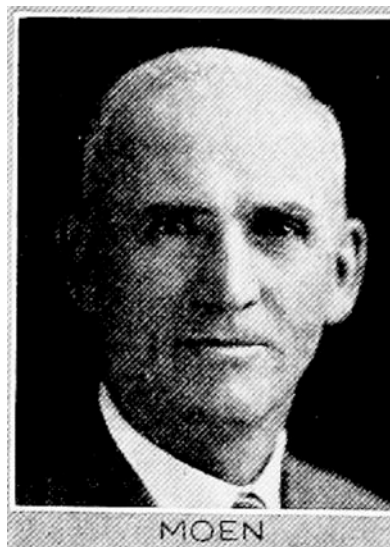
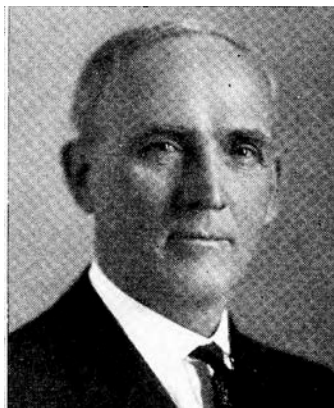




T. E. MOEN.—Senator from the forty-ninth district, Lyon, Osceola, O'Brien and Sioux counties, was born in Lyon county, October 10, 1870, the first child born in Logan township. He attended the rural school, Augustana College at Canton, South Dakota, and St. Olaf College at Northfield, Minnesota. Married Rachel Davidson in 1892 and has five children, two sons and three daughters. A member of the Lutheran church. Was engaged in the grain business fifteen years; spent four years in the chamber of commerce at Minneapolis, a member of Skewis-Moen company. Was county supervisor from 1911 to 1919, being chairman of the board four years. Elected representative in 1918, re-elected in 1920 and 1922. Elected senator to fill vacancy for the special session of the forty-second general assembly and re-elected in 1928. Republican in politics.



T. E. MOEN.—Senator from the forty-ninth district, Lyon, Osceola, O'Brien and Sioux counties, was born in Lyon county October 10, 1870, the first child born in Logan township. He attended the rural schools, Augustana College at Canton, South Dakota, and St. Olaf College at Northfield, Minnesota. Married Rachel Davidson in 1892 and has five children, two sons and three daughters. A member of the Lutheran church. Was engaged in the grain business fifteen years; spent four years in the chamber of commerce at Minneapolis, a member of Skewis-Moen company. Was county supervisor from 1911 to 1919, being chairman of the board four years. Elected representative in 1918, re-elected in 1920 and 1922. Elected senator to fill vacancy for the special session of the forty-second general assembly and re-elected in 1928.



T. E. MOEN.—Representative from Lyon county, was born in that county October 10, 1870, the first child born in Logan township. He attended the rural schools, Augustana college at Canton, and St. Olaf college at Northfield, Minn. Was engaged in the grain business for fifteen years; spent four years in the chamber of commerce at Minneapolis, a member of Skewis-Moen company. Was county supervisor from 1911 to 1919, being chairman of the board four years. Was married in 1892 to Rachel Davidson of Inwood. Member of the Lutheran church. Elected representative in 1918, re-elected in 1920 and 1922. A republican in politics.



T. E. MOEN

Representative from Lyon county, was born in Lyon county, October 10, 1870, the first child born in Logan township. His parents were pioneers in Lyon county, having settled on a homestead in 1870. He attended the rural schools, Augustana college at Canton, South Dakota, and St. Olaf college at Northfield, Minnesota. Was engaged in the grain business for fifteen years; spent four years in the Chamber of Commerce at Minneapolis, a member of Skewis-Moen company. Since that time has been engaged in farming, raising and feeding of stock. Was county supervisor from 1911 to 1919, being chairman of the board four years. Was married in 1892 to Rachel Davidson of Inwood. Member of the Lutheran church. Elected in 1918, re-elected in 1920. A republican in politics.



T. E. MOEN,

Representative from Lyon county, was born in Lyon county, October 10th, 1870, the first child born in Logan township. His parents were pioneers in Lyon county, having settled on a homestead in 1870. He attended the rural schools, Augustana College at Canton, South Dakota, and St. Olaf College at Northfield, Minnesota. Was engaged in the grain business for fifteen years; spent four years in the Chamber of Commerce at Minneapolis, a member of Skewis-Moen Co. Since that time has been engaged in farming, raising and feeding of stock. Is vice president of the Farmers National Bank of Inwood. Was county supervisor from 1911 to 1919, being chairman of the board four years. Was married in 1892 to Rachel Davidson of Inwood. From Norwegian descent, member of the Lutheran church. Elected in 1918. A republican in politics.