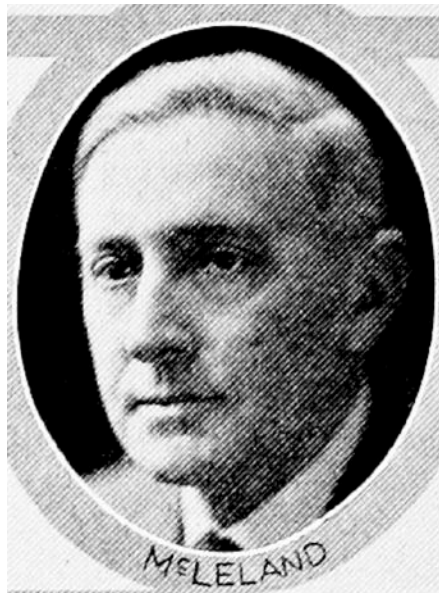




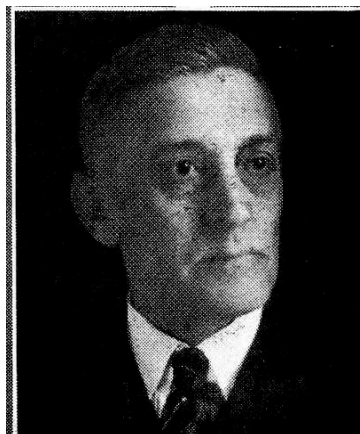
WM. E. MCLELAND.—Senator from the twenty-eighth district, was born in Van Buren county, Iowa, April 16, 1867. In 1869 he moved with his parents to Marshall county, Iowa, and has been a resident of that county ever since. He was educated in the public schools and in the Marshalltown high school. Was married to Minnie M. Robinson, January 25, 1889. They have four children, two sons, Robert McLeland, of Armstrong, Iowa, and John W. McLeland, of Marshalltown, and two daughters, Mrs. Arthur Harris, of Mason City, and Mrs. Leslie Boomhower, of Mason City. He was elected and served as county auditor from 1903 to 1907 and again in 1916 to 1919. Served as secretary of the local exemption board during the World War. Has served as president of the consolidated school board in his district and the various township offices in his township. Is secretary of the Iowa Valley Mutual Insurance Association, Albion, Iowa. Member of the Marshall county farm bureau. Member of the Christian church. He is a farm owner and is engaged in general farming and breeding of registered Shorthorn cattle. Elected to the state senate in 1924 and again in 1928. Served as president pro tempore of the senate during the forty-fourth general assembly. A republican in politics.



WM. E. MCLELLAND.—Senator from the twenty-eighth district, was born in Van Buren county, Iowa, April 16, 1867. In 1869 he moved with his parents to Marshall county, Iowa, and has been a resident of that county ever since. He was educated in the public schools and in the Marshalltown high school. Was married to Minnie M. Robinson January 25, 1889. They have four children, two boys and two girls. He was elected and served as county auditor from 1903 to 1907, and again in 1916 to 1919. Served as secretary of the local exemption board during the world war. Has served as president of the consolidated school board in his district and the various township offices in his township. Is secretary of the Iowa Valley Mutual Insurance association, Albion, Iowa. Member of the Marshall county farm bureau. Member of the Christian church. He is a farm owner and is engaged in general farming and breeding of registered Shorthorn cattle. Elected to the state senate in 1924 and again in 1928. A republican in politics.



WM. E. MCLEELAND.—Senator from the twenty-eighth district, was born in Van Buren county, Iowa, April 16, 1867. In 1869 he moved with his parents to Marshall county, Iowa, and has been a resident of that county ever since. He was educated in the public schools and in the Marshalltown high school. He was elected and served as county auditor from 1903 to 1907, and again in 1916 to 1919. Was married to Minnie M. Robinson January 25, 1889. They have four children, two boys and two girls. He is a farm owner and is engaged in general farming and breeding of registered Shorthorn cattle. Elected to the state senate in 1924. A republican in politics.



WM. E. MCLELAND.—Senator from the 28th district, was born in Van Buren county, Iowa, April 16, 1867. In 1869 he moved with his parents to Marshall county, and has been a resident of that county ever since. He was educated in the public schools and in the Marshalltown high school. He was elected and served as county auditor from 1903 to 1907, and again in 1916 to 1919. Was married to Minnie M. Robinson January 25, 1889. They have four children, two boys and two girls. He is a farm owner and is engaged in general farming and breeding of registered Short Horn cattle. Elected to the state senate in 1924. A republican in politics.