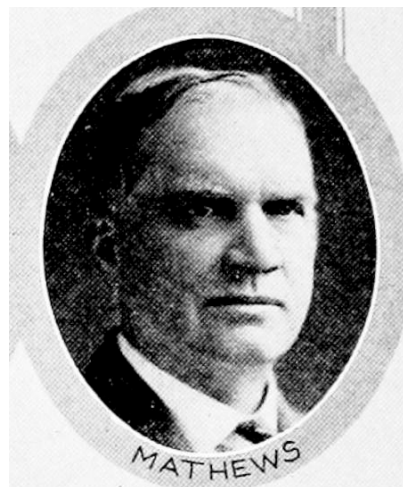
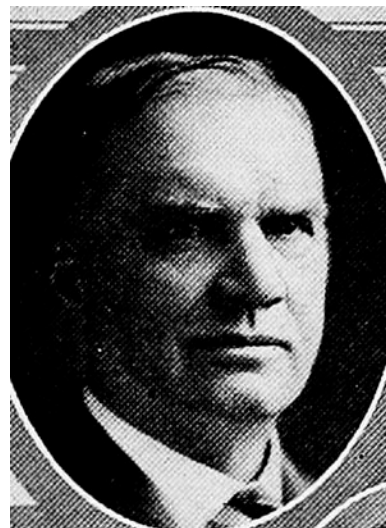




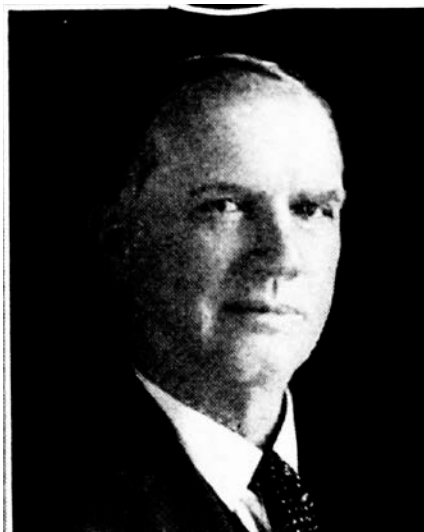
HOWARD A. MATHEWS.—Representative from Des Moines county, was born on a farm September 27, 1866, attended district school and was graduated from the Danville, Iowa, high school in 1887. He was married to Miss Emma A. Gugeler, October 29, 1896. Four children were born to them. Alvin, George, and Grace, are married; Alvin living in Buffalo, New York, and the latter two at Danville, Iowa. Lorin lives at home. Mr. Mathews taught school twelve years in the fall and winter, working on a farm during the spring and summer. In 1899 he was elected county superintendent of schools and moved to Burlington. This office he held nine years. He was then elected principal of the Washington school, Burlington. The following year he was unanimously re-elected, but gave up school work and moved to the farm, his present home, in the spring of 1910. A few years ago he was chosen a director of the Danville State Savings Bank; and of the Burlington Joint Stock Land Bank. He was elected state representative in 1922, 1924, 1926, 1928, and 1930. Selected as speaker pro tempore of the forty-second and forty-third general assemblies. He is a member of the First Congregational church at Danville. A republican in politics.



HOWARD A. MATHEWS.—Representative from Des Moines county, was born on a farm September 27, 1866, attended district school and was graduated from the Danville, Iowa, high school in 1887. He was married to Miss Emma A. Gugeler, October 29, 1896. Four children were born to them, Alvin and Grace being married, the former living in Buffalo, New York, the latter at Danville, Iowa; George and Lorin live at home. Taught school twelve years in the fall and winter, working on a farm during the spring and summer. In 1899 he was elected county superintendent of schools and moved to Burlington. This office he held nine years. He was then elected principal of the Washington school, Burlington. Was unanimously re-elected the following year, but gave up school work and moved to the farm in the spring of 1910, which is now his home. He was elected state representative in 1922, 1924, 1926 and 1928. Elected speaker pro tempore of the forty-second and forty-third general assemblies. He is a member of the First Congregational church at Danville. A republican in politics.



HOWARD A. MATHEWS.—Representative from Des Moines county, was born on a farm September 27, 1866. He attended district school and was graduated from the Danville, Iowa, high school in 1887. He was married to Miss Emma A. Gugeler October 29, 1896. Four children were born to them, Alvin, who is now married and resides in Mountain Lakes, New Jersey, and George, Grace and Lorin at home. Taught school for twelve years in the fall and winter, working on a farm during the spring and summer. In 1899 he was elected county superintendent of schools and moved to Burlington. This office he held for nine years. He was then elected principal of the Washington school, Burlington. Was unanimously reelected the following year but gave up school work and moved to the farm in the spring of 1910, which is now his home. He was elected state representative in 1922, 1924 and 1926. Elected speaker pro tempore of the forty-second general assembly. He is a member of the First Congregational church at Danville. A republican in politics.



HOWARD A. MATHESW.—Representative from Des Moines county, was born on a farm September 27, 1866. He attended district school and was graduated from the Danville, Iowa, high school in 1887. He was married to Miss Emma A. Gugeler October 29, 1896. Four children were born to them—Alvin, who now resides in New Jersey, and George, Grace and Lorin at home. Taught school for twelve years in the fall and winter, working on a farm during the spring and summer. In 1899 he was elected county superintendent of schools and moved to Burlington. This office he held for nine years. He was then elected principal of the Washington school, Burlington. Was unanimously re-elected the following year but gave up school work and moved to the farm in the spring of 1910 which is now his home. He was elected state representative in the fall of 1922 and again in 1924. He is a member of the First Congregational church at Danville. A republican in politics.



HOWARD A. MATHEWS.—Representative from Des Moines county, was born on a farm September 27, 1866. He attended district school, and graduated from the Danville, Iowa, high school 1887. He was married to Miss Emma A. Guegler October 29, 1896. Four children were born to them; Alvin, who now resides in Detroit, Mich., and George, Grace and Lorin at home. Taught school for twelve years during fall and winter, working on the farm during the spring and summer. In 1899, he was elected county superintendent of schools and moved to Burlington. This office he held for nine years, then he was elected principal of the Washington school, Burlington, which position he held for one year. He was unanimously re-elected, but decided to move to the farm. This move he made in the spring of 1910 and has remained there up to the present time. He was elected state representative in the fall of 1922. He is a republican in politics.