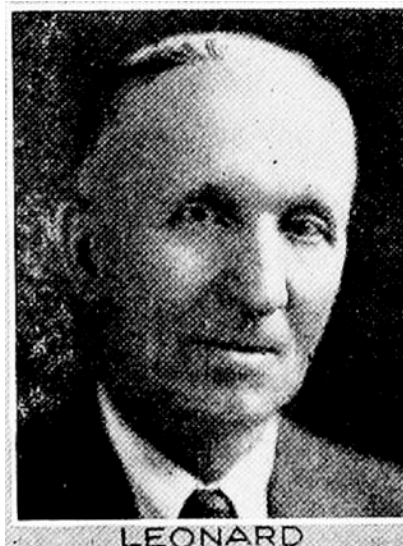
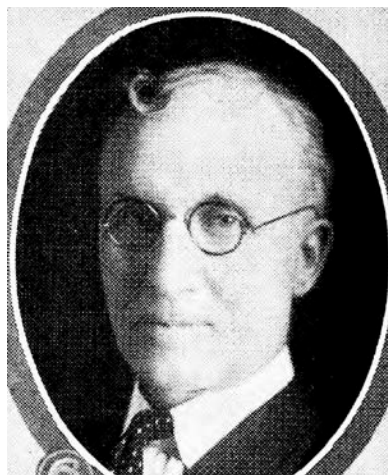


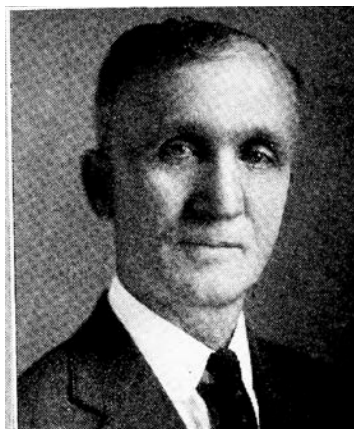
ARTHUR LEONARD.—Senator from Taylor and Adams counties, was born on a farm in Taylor county, Iowa, September 14, 1870. Received his education in the rural schools, and then engaged in farming. His farm adjoins the farm on which he was born. Is a member of the firm of Daniel Leonard and Sons, Iowa pioneers, breeders of Shropshire sheep. Was married to Esther Coulter, February 25, 1893. Two sons and one daughter have been born to them. Was elected representative in 1922 and re-elected in 1924. Elected state senator in 1928. Is a Royal Arch Mason, a member of the Fairview Christian church. Republican in politics.



ARTHUR LEONARD.—Senator from Taylor and Adams counties, was born on a farm in Taylor county, Iowa, September 14, 1870. Received his education in the rural schools, and then engaged in farming. His farm adjoins the farm on which he was born. Is a member of the firm of Daniel Leonard & Sons, Iowa pioneers, breeders of Shropshire sheep. Was married to Esther Cowlter February 25, 1893. Two sons and one daughter have been born to them. Was elected representative in 1922 and re-elected in 1924. Elected state senator in 1928. Is a Royal Arch Mason, a member of the Fairview Christian church. Republican in politics.



ARTHUR LEONARD.—Representative from Taylor county, was born on a farm in Taylor county, Iowa, September 14, 1870. Received his education in the rural schools, and then engaged in farming. His farm adjoins the farm on which he was born. Is a member of the firm of Daniel Leonard and Sons, Iowa pioneers, breeders of Shropshire sheep. Was married to Esther Cowiter February 25, 1893. Two sons and one daughter have been born to them. Was elected representative in 1922 and re-elected in 1924. Is a Royal Arch Mason, a member of the Fairview Christian church. Republican in politics.



ARTHUR LEONARD.—Representative from Taylor county, was born on a farm in Taylor county, Iowa, September 14, 1870. Received his education in the rural schools, and then engaged in farming. His farm adjoins the farm on which he was born. Is a member of the firm of Daniel Leonard & Sons, Iowa pioneers, breeders of Shropshire sheep. Was married to Esther Cowliter February 25, 1893. Two sons and one daughter have been born to them. Was elected representative in 1922. Is a Royal Arch Mason, a member of the Fairview Christian church. Republican in politics.