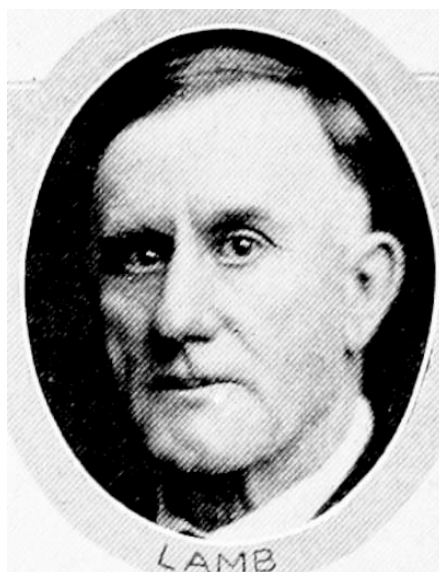


C. W. LAMB.—Representative from Dallas county, was born in Dallas county, June 7, 1868. He received his education in the Panora and Redfield, Iowa, schools. Employed in the harness making trade two years. For many years has been engaged in extensive farming. He has held every township and school office in his community and has given much of his time to the duties of those positions. Was instrumental in placing a consolidated school at Redfield, Iowa. Appointed on important committees during the World war. Had two sons overseas. His father was a veteran of the Civil war, being with Sherman on that memorable march from Atlanta to the sea. He was married to Carrie M. Mohr, of Redfield, Iowa, in 1892. To them were born six children: Virgil H., Charles H., Roy M., Willard D., Colwell, and one daughter, Lorena. Has always been affiliated with the republican party. Served on the state staff of Sons of Veterans organization of Iowa. A member of the Christian church. Elected representative in 1928 and again in 1930.



C. W. LAMB.—Representative from Dallas county, was born in Dallas county June 7, 1868. He received his education in the Panora and Redfield, Iowa, schools. Employed in the harness making trade two years. For many years has been engaged in extensive farming. He has held every township and school office in his community and has given much of his time to the duties of those positions. Was highly instrumental in placing a consolidated school at Redfield, Iowa. Appointed on important committees during the World War. Has always been affiliated with the republican party. A member of the Christian church. Elected representative in 1928.