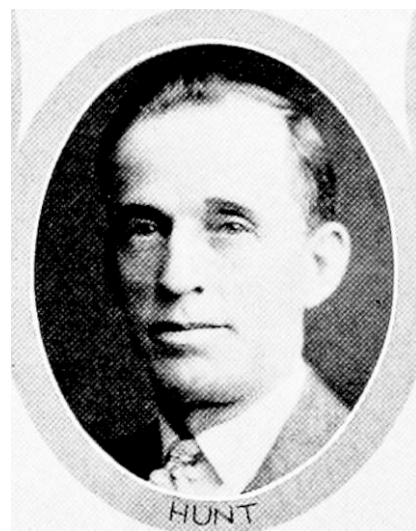




RALPH R. HUNT.—Representative from Louisa county, was born in Marshall township, Louisa county, 1879. Educated in the public schools of Wapello, Iowa. Worked at printer's trade four years, taught school nine years and was elected county superintendent of schools, 1906, serving in that capacity six years. He superintended the schools at Oakville, Iowa, one year after returning to his farm, in 1912. There are two children, Reed L., and Helen D., by his first wife, Mary Pearl Parsons, who died in December, 1913. November 22, 1924, he was united in marriage to Sofie Kramer. The past eighteen years he has devoted his entire time to farming. Elected to the legislature in 1926, re-elected in 1928 and 1930. A republican.



RALPH R. HUNT.—Representative from Louisa county, was born in Marshall township, Louisa county, 1879. Educated in the public schools of Wapello, Iowa. Worked at printer's trade four years, taught school nine years and was elected county superintendent of schools, 1906, serving in that capacity six years. He superintended the schools at Oakville, Iowa, one year after returning to his farm, in 1912. There are two children, Reed L. and Helen D. by his first wife, Mary Pearl Parsons, who died in December, 1913. November 22, 1924, he was united in marriage to Sofie Kramer. The past sixteen years he has devoted his entire time to farming. Elected to the legislature in 1926, re-elected in 1928. A republican.



RALPH R. HUNT.—Representative from Louisa county, was born in Marshall township, Louisa county, 1879. Educated in the public schools of Wapello, Iowa. Worked at printer's trade four years, taught school nine years and was elected county superintendent of schools, 1906, serving in that capacity six years. He superintended the schools at Oakville, Iowa, one year after returning to his farm, in 1912. There are two children, Reed L. and Helen D. by his first wife, Mary Pearl Parsons, who died in December, 1913. November 22, 1924, he was united in marriage to Sofie Kramer. The past fourteen years he has devoted his entire time to farming. A republican in politics.