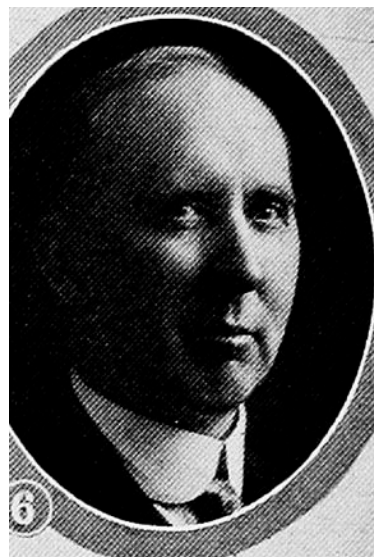




FRANK HOLLINGSWORTH.—Representative from Boone county, was born in Wisconsin. When two years old he moved with his parents to a farm in Dallas county, Iowa, which was his home until 1894. Entered the State University of Iowa in the fall of 1894, and graduated from the liberal arts and law school of the university in 1899. Began the practice of law at Boone, Iowa, in 1899. Married in 1901. He served as republican county chairman for many years. Was assistant county attorney of Boone county four years and elected county attorney in 1910 and 1912. City solicitor of Boone from 1917 to 1919. Served as county chairman for Boone county in liberty loan campaigns during 1918 and 1919. Aside from the law business, interested in farming and banking. A farm land owner and a director in the Boone State bank. A member of the various Masonic bodies, including the Shrine and the Consistory. Also a member of the Elks. Elected representative in 1926. Re-elected in 1928 and 1930. A republican.



FRANK HOLLINGSWORTH.—Representative from Boone county, was born in Wisconsin. When two years old he moved with his parents to a farm in Dallas county, Iowa, which was his home until 1894. Entered the State University of Iowa in the fall of 1894, and graduated from the liberal arts and law school of the university in 1899. Began the practice of law at Boone, Iowa, in 1899. Married in 1901. He served as republican county chairman for many years. Was assistant county attorney of Boone county four years and elected county attorney in 1910 and 1912. City solicitor of Boone from 1917 to 1919. Served as county chairman for Boone county in liberty loan campaigns during 1918 and 1919. Aside from the law business, interested in farming and banking. A farm land owner and a director in the Boone State bank. A member of the various Masonic bodies, including the Shrine and the Consistory. Also a member of the Elks. Elected representative in 1926. Re-elected in 1928. A republican.



FRANK HOLLINGSWORTH.—Representative from Boone county, was born in Wisconsin. When two years old he moved with his parents to a farm in Dallas county, Iowa, which was his home until 1894. Entered the State University of Iowa in the fall of 1894, and graduated from the liberal arts and law school of the university in 1899. Began the practice of law at Boone, Iowa, in 1899. Married in 1901. He served as republican county chairman for many years. Was assistant county attorney of Boone county four years and elected county attorney in 1910 and 1912. City solicitor of Boone from 1917 to 1919. Served as county chairman for Boone county in liberty loan campaigns during 1918 and 1919. Aside from the law business, interested in farming and banking. A farm land owner and a director in the Boone State bank. A member of the various Masonic bodies, including the Shrine and the Consistory. Also a member of the Elks. Elected representative in 1920. A republican.