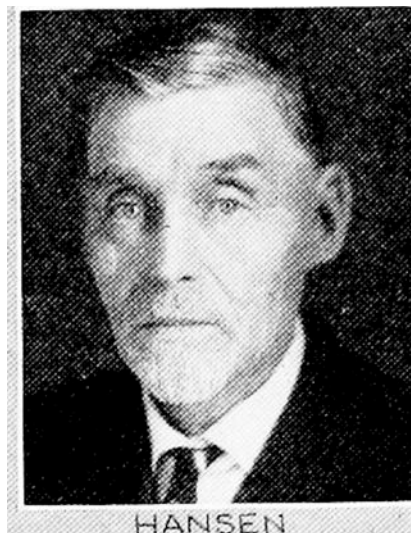
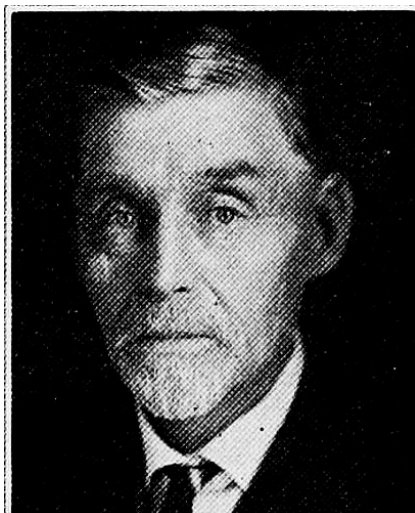


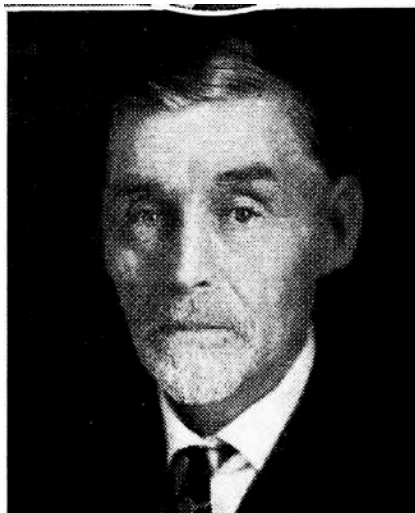
**JOHN T. HANSEN.**—Representative from Scott county, was born in the city of Davenport, Iowa, November 28, 1858. He attended the rural schools and afterwards received some private instruction. Learned the blacksmith trade, but went to farming when he became of age. Was married March 12, 1887, to Emma Horst of Scott county, who died October 6, 1897. There were born to them four children, two boys and two girls. Both boys are World war veterans. One served with the 88th division in France. Has served on the board of education of Sheridan township, one term as justice of the peace and as vice-president of the Scott county farm bureau. A member of the Iowa farm bureau federation. Served in the house since 1917 with the exception of 1921. A member of the Woodmen of the World. A republican in politics.



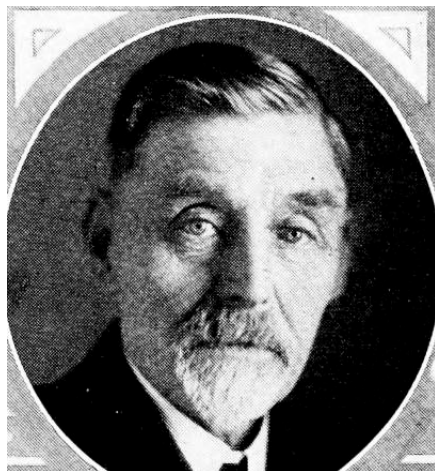
**JOHN T. HANSEN.**—Representative from Scott county, was born in the city of Davenport, Iowa, November 28, 1858. He attended the rural schools and afterwards received some private instruction. Learned the blacksmith trade, but went to farming when he became of age. Was married March 12, 1887, to Emma Harst of Scott county, who died October 6, 1897. There were born to them four children, two boys and two girls. Both boys are World War veterans. One served with the 88th division in France. Has served on the board of education of Sheridan township, one term as justice of the peace and as vice-president of the Scott county farm bureau. A member of the Iowa farm bureau federation. Served in the thirty-seventh, thirty-eighth, fortieth, forty-first and forty-second general assemblies. A member of the Woodmen of the World. A republican in politics.



**JOHN T. HANSEN.**—Representative from Scott county, was born in the city of Davenport, Iowa, November 28, 1858. He attended the rural schools and afterwards received some private instruction. Learned the blacksmith trade, but went to farming when he became of age. Was married March 12, 1887, to Emma Harst of Scott county, who died October 6, 1897. There were born to them four children, two boys and two girls. Both boys are World War veterans. One served with the 88th division in France. Has served on the board of education of Sheridan township, one term as justice of the peace and as vice president of the Scott county farm bureau. A member of the Iowa farm bureau federation. Served in the thirty-seventh, thirty-eighth, fortieth, forty-first and forty-second general assemblies. A member of the Woodmen of the World. A republican in politics.



**JOHN T. HANSEN.**—Representative from Scott county, was born in the city of Davenport, Iowa, November 28, 1858. He attended the rural schools and afterwards received some private instruction. Learned the blacksmith trade, but went to farming when he became of age. Was married March 12, 1887, to Emma Harst of Scott county, who died October 6, 1897. There were born to them four children, two boys and two girls. Both boys are world war veterans. One served with the 88th division in France. Has served eleven years on the board of education of Sheridan township, one term as justice of the peace and twelve consecutive years as vice president of the Scott county farm bureau, and also as a member of the Iowa farm bureau federation. Served in the thirty-seventh, thirty-eighth, fortieth and forty-first general assemblies. A member of the Woodmen of the World. A republican in politics.



**JOHN T. HANSEN.**—Representative from Scott county, was born in the city of Davenport, Iowa, November 28, 1858. He attended the rural schools and afterwards received some private instruction. Learned the blacksmith trade, but went to farming when he became of age. Was married March 12, 1887, to Emma Harst of Scott county, who died October 6, 1897. There were born to them four children, two boys and two girls. Both boys are world war veterans. One served with the 88th division in France. Has served eleven years on the board of education of Sheridan township, one term as justice of the peace and ten consecutive years as vice president of the Scott county farm bureau, and also as a member of the Iowa farm bureau federation. Served in the 37th and 38th general assemblies, and elected to the fourtieth general assembly. A member of the Woodmen of the World. A republican in politics.



**JOHN T. HANSEN.**

One of the representatives from Scott county, was born at Davenport, Iowa, November 28, 1858. Moved to Sherman township, Scott county, May 1, 1861, where he attended the country schools and learned the blacksmith trade under his father. He took up farming in 1880, retiring two years ago. Was married to Emma E. Horst in March, 1887 who died in October, 1897, and has two boys and two girls, both boys being now in the army. Always interested in public affairs, member of the school board for eleven years, president of Eldridge Mutual Telephone company for six years, and now vice president of Scott County Farm League. A Modern Woodman. Elected representative in 1916. Re-elected in 1918. A republican in politics.



JOHN T. HANSEN.

One of the representatives from Scott county, was born at Davenport, Iowa, November 28, 1858. Moved to Sheridan township, Scott county, May 1, 1861, where he attended the country schools afterward receiving private instruction in German. Is a farmer by occupation. Was elected justice of the peace in 1886. Has been closely connected with the patrons of husbandry and is a member of the Woodmen of the World. A republican in politics.